

CHARLES B. READ  
PRESIDENT

NORMAN L. STEVENS, JR.  
VICE-PRESIDENT

*Read & Stevens, Inc.*

*Oil Producers*

*P. O. Box 1518*

*Roswell, New Mexico 88201*

April 10, 1984

#2 Getty Mesa  
PHONE 505-622-3770  
Well Comp. Forms

Certified Mail Number: P 732 282 402

Getty Oil Company  
Post Office Box 1231  
Midland, Texas 79702

NSP-1425

6-26-84\*

RULE 104 D II

RELEASE IMMEDIATELY

FEE LEASE

Re: Non-Standard Proration Unit  
#2 Getty Mesa  
1980' FSL & 1980' FEL  
Sec. 14-16S-31E  
Eddy Co., NM

*1/2 SE/4 Dedicated Acreage  
PREMIER FORMATION*

Dear Sirs:

Read & Stevens, Inc. has made application for a Non-Standard Proration Unit, for the #2 Getty Mesa, located 1980' FSL & 1980' FEL of Sec. 14-16S-31E. The #2 Getty Mesa is completed in the Premier Formation as a gas well. The standard unit would be 160 acres. Since we believe there is oil production in the ~~SE/4~~ of the SE/4, 80 acres will be prorated to this well.

As per Oil Conservation Division Rule 104, all offsetting operators must be notified of the Non-Standard Unit. If no objections are entered within twenty days the application will be approved.

If I can answer any questions, concerning this location, please call.

Sincerely,

READ & STEVENS, INC.

*Bruce Stubbs*

Bruce Stubbs  
Drilling & Production Manager

BS/tb

*This is a copy of the  
original received earlier  
Note by book for dates  
SPQ*

## WELL LOCATION AND ACREAGE DEDICATION AT

Supersedes C-128  
Effective 1-1-65

All distances must be from the outer boundaries of the Section.

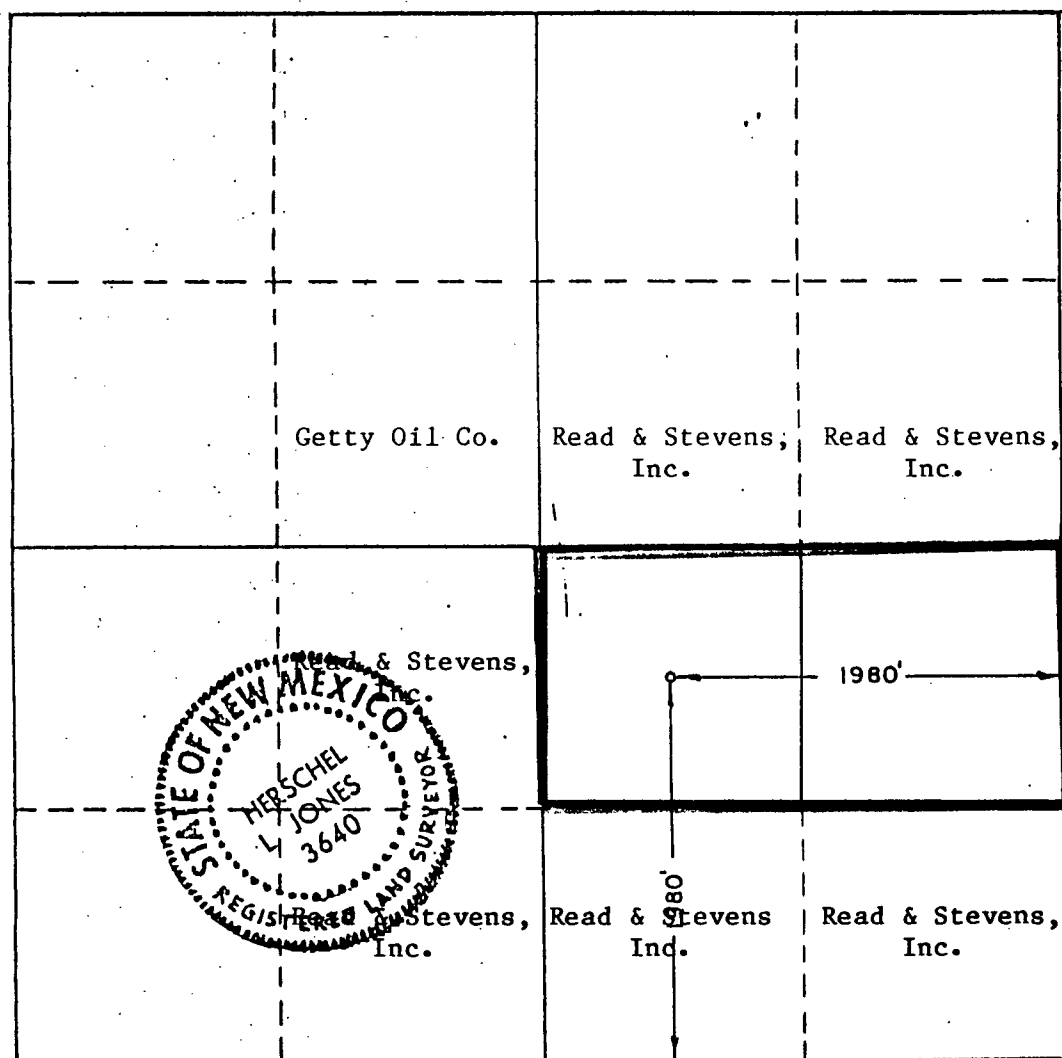
Operator <b>READ &amp; STEVENS INC.</b>		Lease <b>GETTY MESA</b>		Well No. <b>2</b>
Unit Letter <b>J</b>	Section <b>14</b>	Township <b>16 South</b>	Range <b>31 East</b>	County <b>Eddy</b>
Actual Footage Location of Well: <b>1980</b> feet from the <b>South</b> line and <b>1980</b> feet from the <b>East</b> line				
Ground Level Elev. <b>4392.1</b>	Producing Formation <b>Premier</b>	Pool <b>Wildcat</b>	Dedicated Acreage: <b>80</b> Acres	

1. Outline the acreage dedicated to the subject well by colored pencil or hachure marks on the plat below.
2. If more than one lease is dedicated to the well, outline each and identify the ownership thereof (both as to working interest and royalty).
3. If more than one lease of different ownership is dedicated to the well, have the interests of all owners been consolidated by communitization, unitization, force-pooling, etc?

☐ Yes ☐ No If answer is "yes," type of consolidation \_\_\_\_\_

If answer is "no," list the owners and tract descriptions which have actually been consolidated. (Use reverse side of this form if necessary.) \_\_\_\_\_

No allowable will be assigned to the well until all interests have been consolidated (by communitization, unitization, forced-pooling, or otherwise) or until a non-standard unit, eliminating such interests, has been approved by the Commission.



## CERTIFICATION

I hereby certify that the information contained herein is true and complete to the best of my knowledge and belief.

*Tricia Boardman*  
Name

Tricia Boardman  
Position  
Authorized Agent

Company  
Read & Stevens, Inc.

Date  
March 15, 1984

I hereby certify that the well location shown on this plat was plotted from field notes of actual surveys made by me or under my supervision, and that the same is true and correct to the best of my knowledge and belief.

Date Surveyed  
6/22/83

Registered Professional Engineer  
and/or Land Surveyor

*Herschel Jones*  
Certificate No.

3640

OIL CONSERVATION DIVISION  
P.O. BOX 2088  
SANTA FE, NEW MEXICO 87501

Revised 10-1-78

NO. OF COPIES RECEIVED	
SANTA FE	
FILE	
U.S.G.S.	
LAND OFFICE	
OPERATOR	

## WELL COMPLETION OR RECOMPLETION REPORT AND LOG

5a. Indicate Type of Lease  
State ☒ Fee ☐

5. State Oil & Gas Lease No.  
E-5668

XXXXXXXXXXXXXXXXXXXXXXXXXXXX  
XXXXXXXXXXXXXXXXXXXXXXXXXXXX

## 1a. TYPE OF WELL

OIL ☐GAS ☐

## b. TYPE OF COMPLETION

WELL ☐WELL ☒DRY ☐OTHER ☐

NEW WORK

PLUG

DIFF.

WELL ☒OVER ☐DEEPEN ☐BACK ☐RESVR. ☐OTHER ☐

## 7. Unit Agreement Name

## 8. Farm or Lease Name

Getty Mesa

## 2. Name of Operator

Read &amp; Stevens, Inc.

## 9. Well No.

2

## 3. Address of Operator

P.O. Box 1518, Roswell, NM 88201

10. Field and Pool, or Wildcat  
Wildcat Premier

## 4. Location of Well

UNIT LETTER J LOCATED 1980 FEET FROM THE SOUTH LINE AND 1980 FEET FROMTHE East LINE OF SEC. 14 TWP. 16S RGE. 51E NMPMXXXXXXXXXXXXXXXXXXXXXXXXXXXX  
XXXXXXXXXXXXXXXXXXXXXXXXXXXX12. County  
EddyXXXXXXXXXXXXXXXXXXXX  
XXXXXXXXXXXXXXXXXXXX

15. Date Spudded 1-3-84

16. Date T.D. Reached 1-10-83

17. Date Comp. (Ready to Prod.) 1-19-84

18. Elevations (DF, RKB, RT, GR, etc.) 4392.1' GR

19. Elev. Casinghead -

20. Total Depth 4,253'

21. Plug Back T.D. 4,193'

22. If Multiple Compl., How Many -

23. Intervals

Rotary Tools

Cable Tools

Drilled By

01-4,253'

-

24. Producing Interval(s), of this completion-Top, Bottom, Name

4030'-4048'

## 25. Was Directional Survey

Made

No

## 26. Type Electric and Other Logs Run

CNL, FDC, MLL, DLL, Caliper, GR

## 27. Was Well Cored

No

## 28. CASING RECORD (Report all strings set in well)

CASING SIZE	WEIGHT LB./FT.	DEPTH SET	HOLE SIZE	CEMENTING RECORD	AMOUNT PULLED
8 5/8"	24#	1229'	12 1/4"	550 sx	90sx circ
4 1/2"	10.5#	4253'	7 7/8"	600 sx	Nona
				TOC 2090'	

## 29. LINER RECORD

SIZE	TOP	BOTTOM	SACKS CEMENT	SCREEN	SIZE	DEPTH SET	PACKER SET
					2 3/8"	3939	3939

## 31. Perforation Record (Interval, size and number)

4030'-4048', 18', 2 shots/ft, 36 holes

## 32. ACID, SHOT, FRACTURE, CEMENT SQUEEZE, ETC.

DEPTH INTERVAL	AMOUNT AND KIND MATERIAL USED
4030'-4048'	1000 gals 15% MCA acid

## 33. PRODUCTION

Date First Production 3-7-84	Production Method (Flowing, gas lift, pumping-size and type pump) Flowing				Well Status (Prod. or Shut-In) Shut-In	
Date of Test 3-8-84	Hours Tested 24	Choke Size 16/64"	Prod'n For Test Period	Oil-Bbl. 1	Gas-MCF CAOF 1,900	Water-Bbl. -0-
Flow Tubing Press. 600psi	Casing Pressure Opsl	Calculated 24-Hour Rate	Oil-Bbl. 1	Gas-MCF CAOF 1,900	Water Bbl. -0-	Oil Gravity-API (Corr.) -

## 34. Disposition of Gas (Sold, used for fuel, vented, etc.)

WOPLC

## Test Witnessed By

Daryl Lowder

## 35. List of Attachments

Logs Deviation survey

## 36. I hereby certify that the information shown on both sides of this form is true and complete to the best of my

knowledge and belief

SIGNED

TITLE Drilling &amp; Production Manager

DATE 3-13-84

[illegible]

INDICATE FORMATION TOPS IN CONFORMANCE WITH GEOGRAPHICAL SECTION OF STATE

Northwestern New Mexico

OIL OR GAS SAND OR ZONES

## IMPORTANT WATER SANDS

No. 1, from	None	to	feet
No. 2, from		to	feet
No. 3, from		to	feet
No. 4, from		to	feet

FORMATION RECORD (Attach additional sheets if necessary)

From	To	Thickness In Feet	Formation	From	To	Thickness In Feet	Formation
3580'	4022'		Anhy, SdSt, Sh, Dolo,				
4022'	4245'		SdSt, Dolo, Sh, frc. Anhy.				

STATE OF NEW MEXICO  
ENERGY AND MINERALS DEPARTMENT

OIL CONSERVATION DIVISION  
P.O. Box 2088  
SANTA FE, NEW MEXICO 87501

"A Kelly Mesa  
Well Comp. Form  
Form C-103  
Revised 10-1-78

NO. OF COPIES RECEIVED	
DISTRIBUTION	
SANTA FE	
FILE	
U.S.G.S	
LAND OFFICE	
OPERATOR	

5a. Indicate Type of Lease	
State <input checked="" type="checkbox"/>	Fee <input type="checkbox"/>
5. State Oil & Gas Lease No.	
E-5668	

SUNDRY NOTICES AND REPORTS ON WELLS (DO NOT USE THIS FORM FOR PROPOSALS TO DRILL OR TO DEEPEN OR PLUG BACK TO A DIFFERENT RESERVOIR, USE "APPLICATION FOR PERMIT-" (FORM C-101) FOR SUCH PROPOSALS.)		XXXXXXXXXXXXXXXXXXXXXXXXXXXXXXXXXXXX XXXXXXXXXXXXXXXXXXXXXXXXXXXXXXXXXXXX XXXXXXXXXXXXXXXXXXXXXXXXXXXXXXXXXXXX	
1. OIL WELL <input type="checkbox"/> GAS WELL <input checked="" type="checkbox"/> OTHER		7. Unit Agreement Name	
2. Name of Operator Read & Stevens, Inc.		8. Farm or Lease Name Getty Mesa	
3. Address of Operator P.O. Box 1518, Roswell, NM 88201		9. Well No. 2	
4. Location of Well UNIT LETTER <u>J</u> 1980 FEET FROM THE <u>South</u> LINE AND 1980 FEET FROM THE <u>East</u> LINE. SECTION <u>14</u> TOWNSHIP <u>16S</u> RANGE <u>31E</u> NMPM		10. Field and Pool, or Wildcat <u>Wildcat Premier</u> <u>Und. Bunker Hill Penrose Assoc.</u>	
XXXXXXXXXXXXXXXXXXXXXXXXXXXXXXXXXXXX 5. Elevation(Show whether DF,RT,GR,etc.) XXXXXXXXXXXXXXXXXXXXXXXXXXXXXXXXXXXX 4392.1' GR		12. County Eddy	

Check Appropriate Box To Indicate Nature of Notice, Report or Other Data			
NOTICE OF INTENTION TO:		SUBSEQUENT REPORT OF:	
PERFORM REMEDIAL WORK <input type="checkbox"/>	PLUG AND ABANDON <input type="checkbox"/>	REMEDIAL WORK <input type="checkbox"/>	ALTERING CASING <input type="checkbox"/>
TEMPORARILY ABANDON <input type="checkbox"/>	CHANGE PLANS <input type="checkbox"/>	COMMENCE DRILLING OPNS. <input type="checkbox"/>	PLUG AND ABANDONMENT <input type="checkbox"/>
PULL OR ALTER CASING <input type="checkbox"/>		CASING TEST AND CEMENT JOB <input type="checkbox"/>	
OTHER Request for Non-Standard Proration Unit <input checked="" type="checkbox"/>		OTHER <input type="checkbox"/>	

Describe Proposed or Completed Operations(Clearly state all pertinent details, and give pertinent dates, including estimated date of starting any proposed work) SEE RULE 1103.

We respectfully request administrative approval of a Non-Standard Proration Unit, consisting of the N/2 of the SE/4, Sec.14-16S-31E, +80 acres. Getty Oil Company and Read & Stevens, Inc. are the offset operators. A certified letter has been sent to Getty notifying them of our proposed Non-Standard Unit. Enclosed is a C-102 with the proposed Proration Unit outlined in red, with the owners of the offset acreage indicated.

I hereby certify that the information above is true and complete to the best of my knowledge and belief.

SIGNED Bruce Stobbs TITLE Drilling & Production Manager DATE 4-10-84

APPROVED BY \_\_\_\_\_ TITLE \_\_\_\_\_ DATE \_\_\_\_\_

CONDITIONS OF APPROVAL, IF ANY:

STATE OF NEW MEXICO  
ENERGY AND MINERALS DEPARTMENT

OIL CONSERVATION DIVISION  
P.O. BOX 2088  
SANTA FE, NEW MEXICO 87501

7025W  
Well Completion Form  
Form C-101  
Revised 1-1-65

NO. OF COPIES RECEIVED	
DISTRIBUTION	
SANTA FE	
FILE	
U.S.G.S.	
AND OFFICE	
OPERATOR	<input checked="" type="checkbox"/>

AUG 09 1983

O. C. D.  
ARTESIA, OFFICE

5A. Indicate Type of Lease  
STATE ☒ FEE ☐

5. State Oil & Gas Lease No.  
E-5668

XXXXXXXXXXXXXXXXXXXXXXXXXXXX  
XXXXXXXXXXXXXXXXXXXXXXXXXXXX

7. Unit Agreement Name

8. Farm or Lease Name  
Getty Mesa

9. Well No.  
2

10. Field and Pool, or Wildcat  
Und. Bunker Hill Penrose

XXXXXXXXXXXXXXXXXXXXXXXXXXXX  
XXXXXXXXXXXXXXXXXXXXXXXXXXXX  
XXXXXXXXXXXXXXXXXXXXXXXXXXXX

12. County  
Eddy

XXXXXXXXXXXXXXXXXXXX  
XXXXXXXXXXXXXXXXXXXX

19. Proposed Depth  
4250'

19A. Formation  
Penrose

20. Rotary or C.T.  
Rotary

22. Approx. Date Work will start  
September 15, 1983

APPLICATION FOR PERMIT TO DRILL, DEEPEN, OR PLUG BACK

1. TYPE OF WORK  
DRILL ☒ DEEPEN ☐ PLUG BACK ☐

2. TYPE OF WELL  
OIL WELL ☒ GAS WELL ☐ OTHER ☐  
SINGLE ZONE ☐ MULTIPLE ZONE ☐

Name of Operator  
Read & Stevens, Inc.

Address of Operator  
P.O. Box 1518, Roswell, NM 88201

Location of Well  
UNIT LETTER J LOCATED 1980 FEET FROM THE South LINE

1980 FEET FROM THE East LINE OF SEC. 14 TWP. 16S RGE. 31E NMPM

XX  
XX  
XX

XX  
XX

Elevations (Show whether DF, RT, etc.)  
4392.1' GR

21A. Kind & Status Plug Bond  
Statewide

21B. Drilling Contractor  
Sierra Drilg. Co. Rlg #5

PROPOSED CASING AND CEMENT PROGRAM

SIZE OF HOLE	SIZE OF CASING	WEIGHT PER FOOT	SETTING DEPTH	SACKS OF CEMENT	EST. TOP
11"	8 5/8"	24#	1300'	500sx	Circ.
7 7/8"	4 1/2"	10.5#	4250'	600sx	3000'

We propose to drill and test the Penrose Sand formation. Approximately 1300' of 8 5/8" surface casing will be set to protect fresh water sands. Cement will be circulated. If the well is commercial, 4 1/2" production casing will be run and cemented to cover the pay zone with at least 600' of cement.

Mud Program: Native mud to 1300', brine 1300' to 3500', brine and starch 3500' to TD.

BOP Program: One 11" 5000psi WP Shaffer Type "LWS" Hydraulic operated, double BOP w/NL-Shaffer D05040-3S BOP control unit with 40 gal capacity.

APPROVAL VALID FOR 180 DAYS  
PERMIT EXPIRES 2/16/84  
UNLESS DRILLING UNDERWAY

Notify N.M.O.C.C. in sufficient  
time to witness cementing  
the 8 5/8" casing

BOVE SPACE DESCRIBE PROPOSED PROGRAM: IF PROPOSAL IS TO DEEPEN OR PLUG BACK, GIVE DATA ON PRESENT PRODUCTIVE ZONE AND  
USED NEW PRODUCTIVE ZONE. GIVE BLOWOUT PREVENTER PROGRAM, IF ANY.

I hereby certify that the information above is true and complete to the best of my knowledge and belief.

By Bruce Stubbins TITLE Drilling & Production Manager DATE August 4, 1983

(This space for State Use)

Original Signed By  
Leslie A. Clements  
Supervisor District II

APPROVED BY \_\_\_\_\_ TITLE \_\_\_\_\_ DATE AUG 10 1983  
REASONS OF APPROVAL, IF ANY:

**NEW MEXICO OIL CONSERVATION COMMISSION  
WELL LOCATION AND ACREAGE DEDICATION PLAT**

Form C-102  
Supersedes C-128  
Effective 1-1-65

All distances must be from the outer boundaries of the Section.

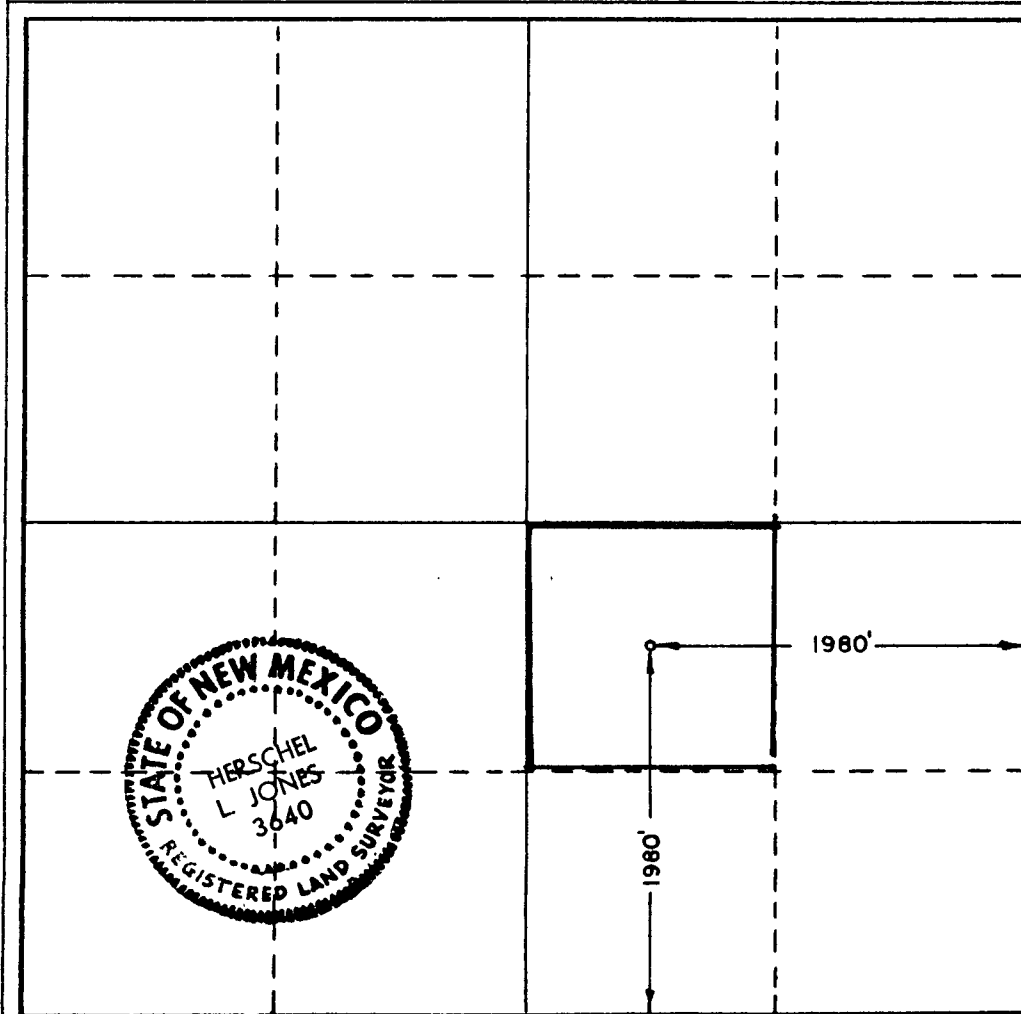
Operator <b>READ &amp; STEVENS INC.</b>			Lease <b>GETTY MESA</b>		Well No. <b>2</b>
Unit Letter <b>J</b>	Section <b>14</b>	Township <b>16 South</b>	Range <b>31 East</b>	County <b>Eddy</b>	
Actual Footage Location of Well:					
<b>1980</b> feet from the <b>South</b> line and		<b>1980</b> feet from the <b>East</b> line			
Ground Level Elev. <b>4392.1</b>	Producing Formation <b>Penrose</b>	Pool <b>Und. Bunker Hill Penrose</b>	Dedicated Acreage <b>40</b> Acres		

1. Outline the acreage dedicated to the subject well by colored pencil or hachure marks on the plat below.
2. If more than one lease is dedicated to the well, outline each and identify the ownership thereof (both as to working interest and royalty).
3. If more than one lease of different ownership is dedicated to the well, have the interests of all owners been consolidated by communitization, unitization, force-pooling, etc?

☐ Yes    ☐ No    If answer is "yes," type of consolidation \_\_\_\_\_

If answer is "no," list the owners and tract descriptions which have actually been consolidated. (Use reverse side of this form if necessary.) \_\_\_\_\_

No allowable will be assigned to the well until all interests have been consolidated (by communitization, unitization, forced-pooling, or otherwise) or until a non-standard unit, eliminating such interests, has been approved by the Commission.



**CERTIFICATION**

I hereby certify that the information contained herein is true and complete to the best of my knowledge and belief.

*Karla LeJeune*  
Name

Karla LeJeune

Position  
Authorized Agent

Company  
Read & Stevens, Inc.

Date  
August '4, 1983

I hereby certify that the well location shown on this plat was plotted from field notes of actual surveys made by me or under my supervision, and that the same is true and correct to the best of my knowledge and belief.

Date Surveyed  
**6/22/83**

Registered Professional Engineer  
and/or Land Surveyor

*Herschel L. Jones*  
Certificate No.  
**3640**

0 330 660 990 1320 1650 1980 2310 2640 2000 1800 1000 500 0