



**Chevron U.S.A. Inc.**  
P.O. Box 1150, Midland, TX 79702

OIL CONSERVATION DIVISION  
P.O. Box 2088

November 9, 1990

'90 NOV 15 PM 9 33

ADMINISTRATIVE APPLICATION FOR  
NON-STANDARD GAS PRORATION UNIT,  
AND SIMULTANEOUS DEDICATION  
BLINEBRY OIL AND GAS POOL  
660' FNL AND 1980' FWL  
SECTION 28, T-21-S, R-37-E, NMPM  
LEA COUNTY, NEW MEXICO

State Of New Mexico  
Energy, Minerals & Natural Resources Dept.  
Oil Conservation Division  
P. O. Box 2088  
Santa Fe, New Mexico 87504

Attention: Mr. William J. LeMay - Director

Gentlemen:

Chevron U.S.A. Inc. respectfully requests administrative approval for a 120-acre Non-Standard Gas Proration Unit and Simultaneous Dedication in the Blinebry Oil and Gas Pool, comprising the W/2 NW/4 and NE/4 NW/4, of Section 28, T-21-S, R-37-E, Lea County, New Mexico, to be assigned to Chevron's Eunice King Well Nos. 19 & 24. In support thereof, ~~Chevron U.S.A. Inc.~~ states the following facts:

- 1) That NMOCD Order No. R-5264 effective September 1, 1976, authorized the simultaneous dedication of a 160-acre non-standard gas proration unit comprising the S/2 NW/4 and W/2 NE/4 of Section 28, T-21-S, R-37-E, Blinebry Oil and Gas Pool, Lea County, New Mexico, to Chevron's Eunice King Well No.s 15 and 24, located in Units F and E of Section 28, respectively.
- 2) That Chevron's Eunice King Well No. 10, located in Unit B of Section 28, T-21-S, R-37-E, has been recompleted as a Blinebry oil well and has been assigned an allowable dedicated to 40-acres com-

prising the NW/4 NE/4 of Section 28. This reduces the NSP unit for Well No.s 15 and 24 to 120 acres.

- 3) That Chevron's Eunice King Well No. 15, located in Unit F of Section 28, T-21-S, R-37-E, was reclassified to an oil well effective June 1, 1987, with an allowable dedicated to 40-acres comprising the SE/4 NW/4 of Section 28. This further reduces the NSP unit acreage to where there is only 40-acres of contiguous acreage remaining for Well No. 24.
- 4) As a result of adding perforations in the Blinebry pay it is necessary to reclassify Chevron's Eunice King Well No. 19 from a Blinebry Oil and Gas well to a Blinebry Gas well. This well is be located 660 feet FNL, and 1980 feet FWL of Section 28, T-21-S, R-37-E, Lea County, New Mexico.

It is now proposed to combine the 40-acres already dedicated to our Eunice King Well No. 24 (NSP-Order No. R-8170) occupying the SW/4 NW/4 of Section 28 with an additional currently undedicated 80-acres comprising N/2 NW/4 of Section 28 incorporating Eunice King Well No. 19. This 120-acre gas proration unit will comprise the W/2 NW/4 and NE/4 NW/4 of Section 28 and be simultaneously dedicated to both Eunice King Well Nos. 19 & 24.

- 5) The proposed Non-Standard Gas Proration Unit will meet the requirements for a Non-Standard Gas Proration Unit as follows:
  - a. The proposed unit consists of 120-acres that are contiguous.
  - b. The proposed unit lies wholly within a single government section in the Blinebry Oil and Gas pool.
  - c. The entire proposed unit may reasonably be presumed to be productive of gas from the Blinebry Oil and Gas Pool.
  - d. A copy of this application will be sent by certified mail to all offset operators and operators owning interests in the proposed unit's boundary and shall serve as notification.

In support of this application, attached is a plat outlining the proposed Non-Standard Unit, the acreage to be simultaneously dedicated to the proposed unit, and showing all offset properties and wells.

In view of the facts submitted, Chevron U.S.A. Inc. requests

that administrative approval of the subject 120-acre Non-Standard Gas Proration Unit be granted.

Sincerely,

*Alan W. Bohling*

A. W. BOHLING

dmb  
Attachments

**CHEVRON U.S.A. INC.**  
**Eunice King Lease**

Application For Non-Standard  
Gas Proration Unit  
and  
Simultaneous Dedication of Acreage  
Blinebry Oil & Gas  
660' FNL and 1980' FWL  
Section 28, T21S, R37E  
Lea County, New Mexico

**OFFSET OPERATORS**

American Exploration Co.  
2100 Republic Bank Center  
Houston, Texas 77002

ARCO Oil and Gas Co.  
P.O. Box 1610  
Midland, Texas 79702

Conoco  
P. O. Box 1959  
Midland, Texas 79702

Marathon Oil Company  
P. O. Box 552  
Midland, Texas 79702

Mobil  
P. O. Box 1800  
Hobbs, New Mexico 88240

J. H. Hendrix  
223 W. Wall  
Midland, Texas 79701

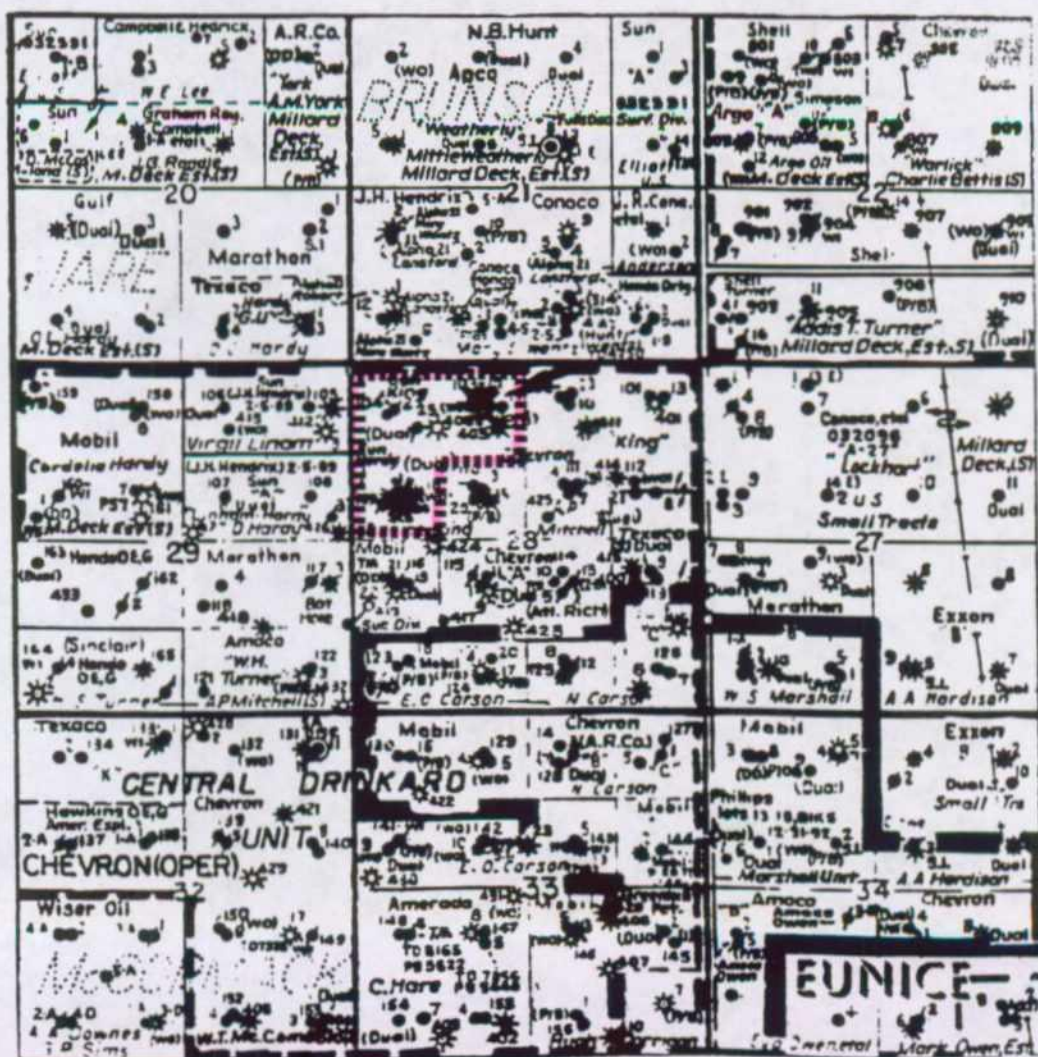
Hondo Drilling Inc.  
Drawer 2516  
Midland, Texas 79702

Texaco Producing Co.  
P. O. Box 3109  
Midland, Texas 79702

Oryx Energy Co.  
P. O. Box 1861  
Midland, Texas 79702

CHEVRON U.S.A. INC.  
Eunice King Lease

Application For Non-Standard  
Gas Proration Unit  
and  
Simultaneous Dedication of Acreage  
Blinbry Oil & Gas  
660' FNL and 1980' FWL  
Section 28, T21S, R37E  
Lea County, New Mexico





Submit to Appropriate  
District Office  
State Lease - 4 copies  
Fee Lease - 3 copies

State of New Mexico  
Energy, Minerals and Natural Resources Department

Form C-102  
Revised 1-1-89

OIL CONSERVATION DIVISION

P.O. Box 2088  
Santa Fe, New Mexico 87504-2088

DISTRICT I  
P.O. Box 1980, Hobbs, NM 88240

DISTRICT II  
P.O. Drawer DD, Artesia, NM 88210

DISTRICT III  
1000 Rio Brazos Rd., Aztec, NM 87410

WELL LOCATION AND ACREAGE DEDICATION PLAT

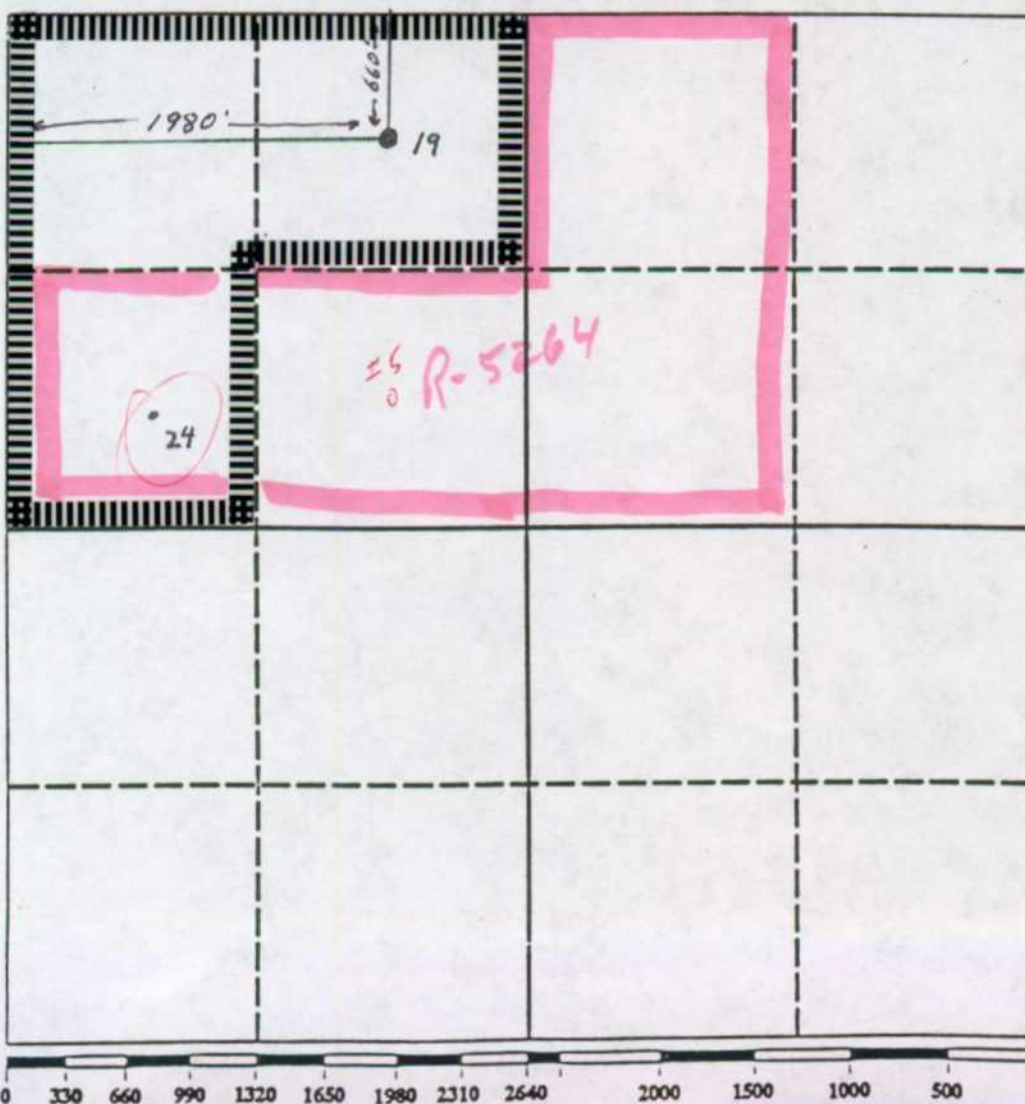
All Distances must be from the outer boundaries of the section

Operator Chevron U.S.A. Inc.			Lease Eunice King		Well No. 19
Unit Letter C	Section 28	Township 21S	Range 37E	County Lea	NMPM
Actual Footage Location of Well: 660 feet from the North line and 1980 feet from the West line					
Ground level Elev. 3466'	Producing Formation Blinebry		Pool Blinebry Oil and Gas		Dedicated Acreage: 120 Acres

1. Outline the acreage dedicated to the subject well by colored pencil or hatchure marks on the plat below.
2. If more than one lease is dedicated to the well, outline each and identify the ownership thereof (both as to working interest and royalty).
3. If more than one lease of different ownership is dedicated to the well, have the interest of all owners been consolidated by communitization, unitization, force-pooling, etc.?  
☐ Yes ☐ No If answer is "yes" type of consolidation \_\_\_\_\_

If answer is "no" list the owners and tract descriptions which have actually been consolidated. (Use reverse side of this form if necessary.)

No allowable will be assigned to the well until all interests have been consolidated (by communitization, unitization, forced-pooling, or otherwise) or until a non-standard unit, eliminating such interest, has been approved by the Division.



OPERATOR CERTIFICATION

I hereby certify that the information contained herein is true and complete to the best of my knowledge and belief.

Signature <i>David Bohon</i>
Printed Name D.M. Bohon
Position Technical Assistant
Company Chevron U.S.A. Inc.
Date 11/12/90

SURVEYOR CERTIFICATION

I hereby certify that the well location shown on this plat was plotted from field notes of actual surveys made by me or under my supervision, and that the same is true and correct to the best of my knowledge and belief.

Date Surveyed
Signature & Seal of Professional Surveyor
Certificate No.



Submit to Appropriate  
District Office  
State Lease - 4 copies  
Fee Lease - 3 copies

State of New Mexico  
Energy, Minerals and Natural Resources Department

Form C-102  
Revised 1-1-89

OIL CONSERVATION DIVISION

P.O. Box 2088  
Santa Fe, New Mexico 87504-2088

DISTRICT I  
P.O. Box 1980, Hobbs, NM 88240

DISTRICT II  
P.O. Drawer DD, Artesia, NM 88210

DISTRICT III  
1000 Rio Brazos Rd., Aztec, NM 87410

WELL LOCATION AND ACREAGE DEDICATION PLAT

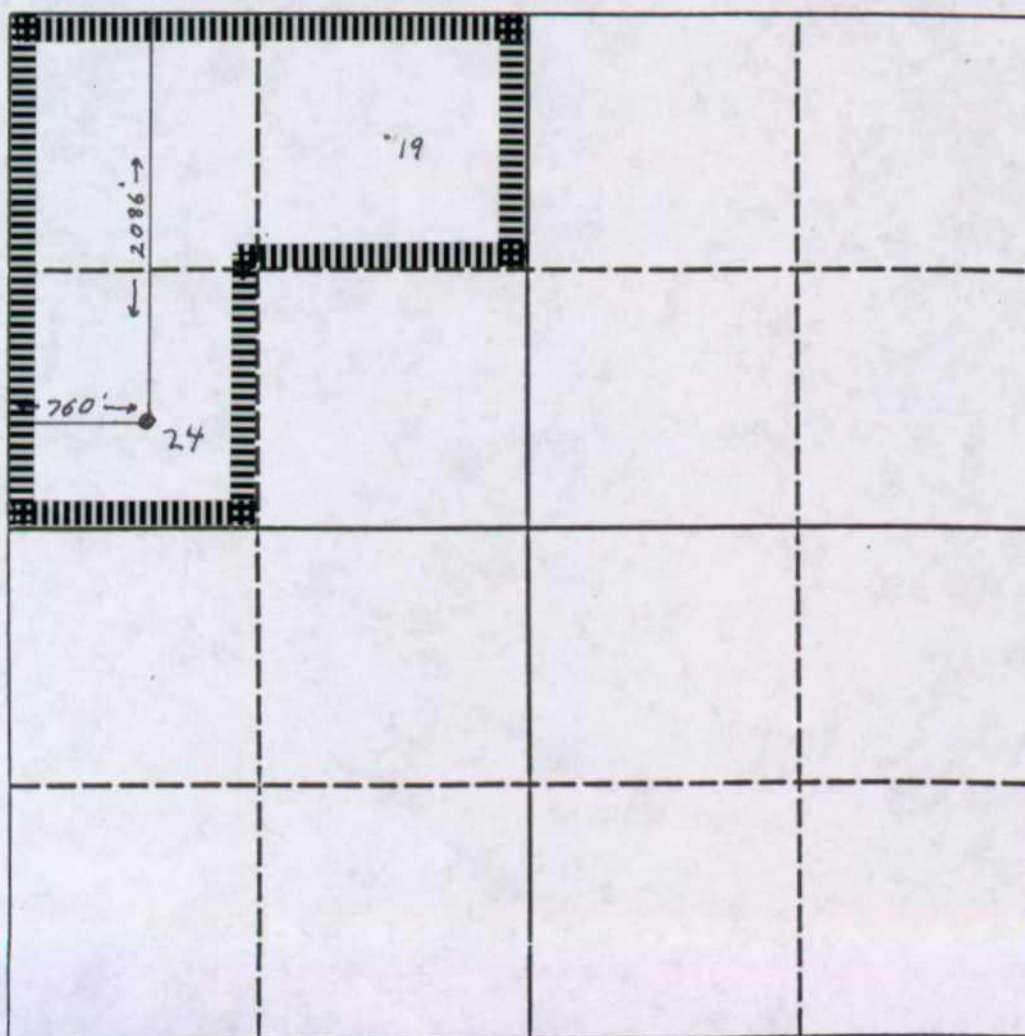
All Distances must be from the outer boundaries of the section

Operator Chevron U.S.A Inc.			Lease Eunice King		Well No. 24
Unit Letter E	Section 28	Township 21S	Range 37E	County Lea	
Actual Footage Location of Well: 2086 feet from the North line and 760 feet from the West line					
Ground level Elev. 3470'	Producing Formation Blinebry		Pool Blinebry Oil and Gas		Dedicated Acreage: 120 Acres

1. Outline the acreage dedicated to the subject well by colored pencil or hatchure marks on the plat below.
2. If more than one lease is dedicated to the well, outline each and identify the ownership thereof (both as to working interest and royalty).
3. If more than one lease of different ownership is dedicated to the well, have the interest of all owners been consolidated by communitization, unitization, force-pooling, etc.?  
☐ Yes ☐ No If answer is "yes" type of consolidation \_\_\_\_\_

If answer is "no" list the owners and tract descriptions which have actually been consolidated. (Use reverse side of this form if necessary.) \_\_\_\_\_

No allowable will be assigned to the well until all interests have been consolidated (by communitization, unitization, forced-pooling, or otherwise) or until a non-standard unit, eliminating such interest, has been approved by the Division.



OPERATOR CERTIFICATION

I hereby certify that the information contained herein is true and complete to the best of my knowledge and belief.

Signature  
*David Bohon*  
Printed Name  
D. M. Bohon  
Position  
Technical Assistant  
Company  
Chevron U.S.A. Inc.  
Date  
11/12/90

SURVEYOR CERTIFICATION

I hereby certify that the well location shown on this plat was plotted from field notes of actual surveys made by me or under my supervision, and that the same is true and correct to the best of my knowledge and belief.

Date Surveyed  
Signature & Seal of Professional Surveyor  
Certificate No.

0 330 660 990 1320 1650 1980 2310 2640 2000 1500 1000 500 0

BEFORE THE OIL CONSERVATION COMMISSION  
OF THE STATE OF NEW MEXICO

IN THE MATTER OF THE HEARING  
CALLED BY THE OIL CONSERVATION  
COMMISSION OF NEW MEXICO FOR  
THE PURPOSE OF CONSIDERING:

CASE NO. 5742  
Order No. R-5264

APPLICATION OF GULF OIL CORPORATION FOR  
A NON-STANDARD GAS PRORATION UNIT AND  
SIMULTANEOUS DEDICATION, LEA COUNTY,  
NEW MEXICO.

ORDER OF THE COMMISSION

BY THE COMMISSION:

This cause came on for hearing at 9 a.m. on August 18, 1976, at Santa Fe, New Mexico, before Examiner, Richard L. Stamets.

NOW, on this 31st day of August, 1976, the Commission, a quorum being present, having considered the testimony, the record, and the recommendations of the Examiner, and being fully advised in the premises,

FINDS:

- (1) That due public notice having been given as required by law, the Commission has jurisdiction of this cause and the subject matter thereof.
- (2) That the applicant, Gulf Oil Corporation, seeks approval for a 160-acre non-standard gas proration unit comprising the S/2 NW/4 and W/2 NE/4 of Section 28, Township 21 South, Range 37 East, NMPM, Blinebry Oil and Gas Pool, Lea County, New Mexico.
- (3) That the applicant seeks to simultaneously dedicate to said non-standard unit its Eunice King Wells Nos. 5 and 24, located in Units F and E, respectively, of said Section 28, with unit production to be taken from said wells in any proportion.
- (4) That the proposed non-standard gas proration unit can be efficiently and economically drained and developed by the subject wells.
- (5) That the applicant further seeks authority to later substitute its Eunice King Well No. 15, located 2086 feet from the North and West lines of said Section 28 for the aforesaid Well No. 5 in the above-described simultaneous dedication.
- (6) That approval of the subject application will afford the applicant the opportunity to produce its just and equitable share of the gas in the Blinebry Oil and Gas Pool and will otherwise prevent waste and protect correlative rights.



(7) That Commission Order No. R-4368 and Administrative Order NSP-1027, which approved the non-standard gas proration units to be consolidated by this order should be superseded.

IT IS THEREFORE ORDERED:

(1) That effective at 7:00 a.m. on September 1, 1976, the applicant, Gulf Oil Corporation, is hereby authorized to simultaneously dedicate 160-acre non-standard gas proration unit comprising the S/2 NW/4 and W/2 NE/4 of Section 28, Township 21 South, Range 37 East, NMPM, Blinbry Oil and Gas Pool, Lea County, New Mexico, to its Eunice King Wells Nos. 5 and 24, located in Units F and E, respectively, of said Section 28, with unit production to be taken from said wells in any proportion.

PROVIDED HOWEVER, that upon a proper showing by the applicant, the Secretary-Director of the Commission may substitute applicant's Eunice King Well No. 15 in Unit F of said Section 28 for the aforesaid Well No. 5 in the above-described simultaneous dedication.

(2) That the allowable assigned to the above-described gas proration unit shall be based upon the unit size of 160-acres and that the operator may produce the allowable assigned to the unit from the subject wells in any proportion.

(3) That Commission Order No. R-4368 and Administrative Order NSP-1027 are hereby superseded.

(4) That jurisdiction of this cause is retained for the entry of such further orders as the Commission may deem necessary.

DONE at Santa Fe, New Mexico, on the day and year hereinabove designated.

STATE OF NEW MEXICO  
OIL CONSERVATION COMMISSION



PHIL R. LUCERO, Chairman

EMERY C. ARNOLD, Member



JOE D. RAMEY, Member & Secretary

S E A L

jr/



STATE OF NEW MEXICO  
ENERGY AND MINERALS DEPARTMENT  
OIL CONSERVATION DIVISION  
HOBBS DISTRICT OFFICE

GARREY CARRUTHERS  
GOVERNOR

POST OFFICE BOX 1980  
HOBBS, NEW MEXICO 88241-1980  
(505) 393-6161

OIL CONSERVATION DIVISION  
P. O. BOX 2088  
SANTA FE, NEW MEXICO 87501

RE: Proposed:

MC \_\_\_\_\_  
DHC \_\_\_\_\_  
NSL \_\_\_\_\_  
NSP ☒ \_\_\_\_\_  
SWD \_\_\_\_\_  
WFX \_\_\_\_\_  
PMX \_\_\_\_\_

Gentlemen:

I have examined the application for the:

*Champion Oil & Gas Co. Eunice, La. 19-C 424-E 28-2137*  
Operator Lease & Well No. Unit *1* S-T-R

and my recommendations are as follows:

*OK*

Yours very truly,

*Jerry Sexton*  
Jerry Sexton  
Supervisor, District 1

/ed



**Chevron U.S.A. Inc.**  
P.O. Box 1150, Midland, TX 79702

November 7, 1990

Waiver Request  
Non-Standard Gas Proration Unit,  
and Simultaneous Dedication  
Blinebry Oil and Gas Pool  
660' FSL AND 1980' FWL  
SECTION 28, T-21-S, R-37-E, NMPM  
LEA COUNTY, NEW MEXICO

Conoco  
P.O. Box 1959  
Midland, Texas 79702

Gentlemen:

Attached is a copy of Chevron's administrative application for NMOCD approval of a Non-Standard Gas Proration Unit, and Simultaneous Dedication in the Blinebry Oil and Gas Pool.

As a result of adding perforations in the Blinebry pay it is necessary to reclassify Chevron's Eunice King Well No. 19 from a Blinebry Oil well to a Blinebry Gas well. This well will be located 660 feet FNL, and 1980 feet FWL of section 28, T-21-S, R-37-E, Lea County, New Mexico.

To prevent waste, Chevron is requesting the NMOCD to grant approval to form a 120-acre gas proration unit comprising the W/2 NW/4 and NE/4 NW/4, Section 28, T-21-S, R-37-E, Lea County, New Mexico. This 120-acre gas proration unit will be formed by combining the 40-acres already dedicated to our Eunice King Well No. 24 (NSP Order No. R-8170) occupying the SW/4 NW/4 of Section 28 with an additional currently undedicated 80-acres comprising N/2 NW/4 of Section 28 and incorporating Eunice King Well No. 19. Chevron then plans to simultaneously dedicate the 120-acres to both Eunice King Well Nos. 19 & 24.

As an offset operator, if you do not have any objections to the attached application, please sign the enclosed waivers and mail the original and two copies to the NMOCD in Santa Fe and one copy to the NMOCD in Hobbs. We would also request that you send a copy to Chevron U.S.A. Inc. in Midland. We have enclosed self



addressed, stamped envelopes for your convenience.

If you have any questions, please contact Mr. A. W. Bohling at (915) 687-7246. Your prompt consideration in the above matter is appreciated.

Yours very truly,

*Alan W. Bohling*

A. W. Bohling  
Proration Engineer

AWB  
Attachments



**Chevron U.S.A. Inc.**  
P.O. Box 1150, Midland, TX 79702

November 7, 1990

Waiver Request  
Non-Standard Gas Proration Unit,  
and Simultaneous Dedication  
Blinebry Oil and Gas Pool  
660' FSL AND 1980' FWL  
SECTION 28, T-21-S, R-37-E, NMPM  
LEA COUNTY, NEW MEXICO

Oryx Energy Co.  
P.O. Box 1861  
Midland, Texas 79702

Gentlemen:

Attached is a copy of Chevron's administrative application for NMOCD approval of a Non-Standard Gas Proration Unit, and Simultaneous Dedication in the Blinebry Oil and Gas Pool.

As a result of adding perforations in the Blinebry pay it is necessary to reclassify Chevron's Eunice King Well No. 19 from a Blinebry Oil well to a Blinebry Gas well. This well will be located 660 feet FNL, and 1980 feet FWL of section 28, T-21-S, R-37-E, Lea County, New Mexico.

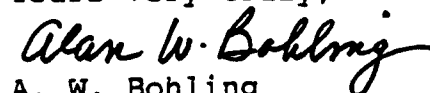
To prevent waste, Chevron is requesting the NMOCD to grant approval to form a 120-acre gas proration unit comprising the W/2 NW/4 and NE/4 NW/4, Section 28, T-21-S, R-37-E, Lea County, New Mexico. This 120-acre gas proration unit will be formed by combining the 40-acres already dedicated to our Eunice King Well No. 24 (NSP Order No. R-8170) occupying the SW/4 NW/4 of Section 28 with an additional currently undedicated 80-acres comprising N/2 NW/4 of Section 28 and incorporating Eunice King Well No. 19. Chevron then plans to simultaneously dedicate the 120-acres to both Eunice King Well Nos. 19 & 24.

As an offset operator, if you do not have any objections to the attached application, please sign the enclosed waivers and mail the original and two copies to the NMOCD in Santa Fe and one copy to the NMOCD in Hobbs. We would also request that you send a copy to Chevron U.S.A. Inc. in Midland. We have enclosed self

addressed, stamped envelopes for your convenience.

If you have any questions, please contact Mr. A. W. Bohling at (915) 687-7246. Your prompt consideration in the above matter is appreciated.

Yours very truly,

A handwritten signature in cursive script that reads "Alan W. Bohling".

A. W. Bohling  
Proration Engineer

AWB  
Attachments



**CHEVRON U.S.A. INC.**  
Eunice King Lease

Application For Non-Standard  
Gas Proration Unit,  
and  
Simultaneous Dedication of Acreage  
Blinebry Oil & Gas  
660' FNL and 1980' FWL  
Section 28, T21S, R37E  
Lea County, New Mexico

**WAIVER TO OBJECTION**

We, the undersigned, as an offset operator, waive any objection to Chevron U.S.A. Inc.'s application for NMOCDD approval of a Non-Standard Gas Proration Unit in the Blinebry Oil and Gas Pool. We further understand that the Eunice King Well No. 19 along with the Eunice King Well No. 24 will be Simultaneously Dedicated to a 120-acre proration unit. This unit will be formed by combining the existing 40 acres already dedicated to the Eunice King Well No. 24 with an additional 80-acres incorporating the Eunice King Well No. 19. This 120-acre gas proration unit will comprise the W/2 NW/4 and NE/4 NW/4 of Section 28, T-21-S, R-37-E, NMPM, Lea County, New Mexico. By so forming this 120-acre proration unit, we also hereby waive any objection to the unorthodox location of Eunice King Well No. 24. That location being 2086 feet FNL, and 760 feet FWL of Section 28, T-21-S, R-37-E, NMPM, Lea County, New Mexico.

Company: \_\_\_\_\_

Representative: \_\_\_\_\_

Signature: \_\_\_\_\_

Title: \_\_\_\_\_

Date: \_\_\_\_\_



**Chevron U.S.A. Inc.**  
P.O. Box 1150, Midland, TX 79702

November 7, 1990

Waiver Request  
Non-Standard Gas Proration Unit,  
and Simultaneous Dedication  
Blinebry Oil and Gas Pool  
660' FSL AND 1980' FWL  
SECTION 28, T-21-S, R-37-E, NMPM  
LEA COUNTY, NEW MEXICO

Texaco Producing Co.  
P.O. Box 3109  
Midland, Texas 79702

Gentlemen:

Attached is a copy of Chevron's administrative application for NMOCD approval of a Non-Standard Gas Proration Unit, and Simultaneous Dedication in the Blinebry Oil and Gas Pool.

As a result of adding perforations in the Blinebry pay it is necessary to reclassify Chevron's Eunice King Well No. 19 from a Blinebry Oil well to a Blinebry Gas well. This well will be located 660 feet FNL, and 1980 feet FWL of section 28, T-21-S, R-37-E, Lea County, New Mexico.

To prevent waste, Chevron is requesting the NMOCD to grant approval to form a 120-acre gas proration unit comprising the W/2 NW/4 and NE/4 NW/4, Section 28, T-21-S, R-37-E, Lea County, New Mexico. This 120-acre gas proration unit will be formed by combining the 40-acres already dedicated to our Eunice King Well No. 24 (NSP Order No. R-8170) occupying the SW/4 NW/4 of Section 28 with an additional currently undedicated 80-acres comprising N/2 NW/4 of Section 28 and incorporating Eunice King Well No. 19. Chevron then plans to simultaneously dedicate the 120-acres to both Eunice King Well Nos. 19 & 24.

As an offset operator, if you do not have any objections to the attached application, please sign the enclosed waivers and mail the original and two copies to the NMOCD in Santa Fe and one copy to the NMOCD in Hobbs. We would also request that you send a copy to Chevron U.S.A. Inc. in Midland. We have enclosed self

addressed, stamped envelopes for your convenience.

If you have any questions, please contact Mr. A. W. Bohling at (915) 687-7246. Your prompt consideration in the above matter is appreciated.

Yours very truly,

*Alan W. Bohling*  
A. W. Bohling  
Proration Engineer

AWB  
Attachments





**Chevron U.S.A. Inc.**  
P.O. Box 1150, Midland, TX 79702

November 7, 1990

Waiver Request  
Non-Standard Gas Proration Unit,  
and Simultaneous Dedication  
Blinebry Oil and Gas Pool  
660' FSL AND 1980' FWL  
SECTION 28, T-21-S, R-37-E, NMPM  
LEA COUNTY, NEW MEXICO

American Exploration Co.  
2100 Republic Bank Center  
Houston, Texas 77002

Gentlemen:

Attached is a copy of Chevron's administrative application for NMOCD approval of a Non-Standard Gas Proration Unit, and Simultaneous Dedication in the Blinebry Oil and Gas Pool.

As a result of adding perforations in the Blinebry pay it is necessary to reclassify Chevron's Eunice King Well No. 19 from a Blinebry Oil well to a Blinebry Gas well. This well will be located 660 feet FNL, and 1980 feet FWL of section 28, T-21-S, R-37-E, Lea County, New Mexico.

To prevent waste, Chevron is requesting the NMOCD to grant approval to form a 120-acre gas proration unit comprising the W/2 NW/4 and NE/4 NW/4, Section 28, T-21-S, R-37-E, Lea County, New Mexico. This 120-acre gas proration unit will be formed by combining the 40-acres already dedicated to our Eunice King Well No. 24 (NSP Order No. R-8170) occupying the SW/4 NW/4 of Section 28 with an additional currently undedicated 80-acres comprising N/2 NW/4 of Section 28 and incorporating Eunice King Well No. 19. Chevron then plans to simultaneously dedicate the 120-acres to both Eunice King Well Nos. 19 & 24.

As an offset operator, if you do not have any objections to the attached application, please sign the enclosed waivers and mail the original and two copies to the NMOCD in Santa Fe and one copy to the NMOCD in Hobbs. We would also request that you send a copy to Chevron U.S.A. Inc. in Midland. We have enclosed self

addressed, stamped envelopes for your convenience.

If you have any questions, please contact Mr. A. W. Bohling at (915) 687-7246. Your prompt consideration in the above matter is appreciated.

Yours very truly,

*Alan W. Bohling*  
A. W. Bohling  
Proration Engineer

AWB  
Attachments

DIVISION  
'90 DEC 7 AM 8 42

CHEVRON U.S.A. INC.  
Eunice King Lease

Application For Non-Standard  
Gas Proration Unit,  
and  
Simultaneous Dedication of Acreage  
Blinebry Oil & Gas  
660' FNL and 1980' FWL  
Section 28, T21S, R37E  
Lea County, New Mexico

WAIVER TO OBJECTION

We, the undersigned, as an offset operator, waive any objection to Chevron U.S.A. Inc.'s application for NMOCD approval of a Non-Standard Gas Proration Unit in the Blinebry Oil and Gas Pool. We further understand that the Eunice King Well No. 19 along with the Eunice King Well No. 24 will be Simultaneously Dedicated to a 120-acre proration unit. This unit will be formed by combining the existing 40 acres already dedicated to the Eunice King Well No. 24 with an additional 80-acres incorporating the Eunice King Well No. 19. This 120-acre gas proration unit will comprise the W/2 NW/4 and NE/4 NW/4 of Section 28, T-21-S, R-37-E, NMPM, Lea County, New Mexico. By so forming this 120-acre proration unit, we also hereby waive any objection to the unorthodox location of Eunice King Well No. 24. That location being 2086 feet FNL, and 760 feet FWL of Section 28, T-21-S, R-37-E, NMPM, Lea County, New Mexico.

Company: AMERICAN EXPLORATION COMPANY

Representative: \_\_\_\_\_

Signature: \_\_\_\_\_

Title: \_\_\_\_\_

Date: \_\_\_\_\_

G. R. Diamond  
Land Manager-Operations

12/3/90

review  
CEL





**Chevron U.S.A. Inc.**  
P.O. Box 1150, Midland, TX 79702

November 7, 1990

Waiver Request  
Non-Standard Gas Proration Unit,  
and Simultaneous Dedication  
Blinebry Oil and Gas Pool  
660' FSL AND 1980' FWL  
SECTION 28, T-21-S, R-37-E, NMPM  
LEA COUNTY, NEW MEXICO

Hondo Drilling Inc.  
Drawer 2516  
Midland, Texas 79702

Gentlemen:

Attached is a copy of Chevron's administrative application for NMOCD approval of a Non-Standard Gas Proration Unit, and Simultaneous Dedication in the Blinebry Oil and Gas Pool.

As a result of adding perforations in the Blinebry pay it is necessary to reclassify Chevron's Eunice King Well No. 19 from a Blinebry Oil well to a Blinebry Gas well. This well will be located 660 feet FNL, and 1980 feet FWL of section 28, T-21-S, R-37-E, Lea County, New Mexico.

To prevent waste, Chevron is requesting the NMOCD to grant approval to form a 120-acre gas proration unit comprising the W/2 NW/4 and NE/4 NW/4, Section 28, T-21-S, R-37-E, Lea County, New Mexico. This 120-acre gas proration unit will be formed by combining the 40-acres already dedicated to our Eunice King Well No. 24 (NSP Order No. R-8170) occupying the SW/4 NW/4 of Section 28 with an additional currently undedicated 80-acres comprising N/2 NW/4 of Section 28 and incorporating Eunice King Well No. 19. Chevron then plans to simultaneously dedicate the 120-acres to both Eunice King Well Nos. 19 & 24.

As an offset operator, if you do not have any objections to the attached application, please sign the enclosed waivers and mail the original and two copies to the NMOCD in Santa Fe and one copy to the NMOCD in Hobbs. We would also request that you send a copy to Chevron U.S.A. Inc. in Midland. We have enclosed self

addressed, stamped envelopes for your convenience.

If you have any questions, please contact Mr. A. W. Bohling at (915) 687-7246. Your prompt consideration in the above matter is appreciated.

Yours very truly,

*Alan W. Bohling*

A. W. Bohling  
Proration Engineer

AWB  
Attachments

RECEIVED  
OIL DIVISION  
NOV 16 AM 9 03

**CHEVRON U.S.A. INC.**  
Eunice King Lease

Application For Non-Standard  
Gas Proration Unit,  
and  
Simultaneous Dedication of Acreage  
Blinebry Oil & Gas  
660' FNL and 1980' FWL  
Section 28, T21S, R37E  
Lea County, New Mexico

**WAIVER TO OBJECTION**

We, the undersigned, as an offset operator, waive any objection to Chevron U.S.A. Inc.'s application for NMOC approval of a Non-Standard Gas Proration Unit in the Blinebry Oil and Gas Pool. We further understand that the Eunice King Well No. 19 along with the Eunice King Well No. 24 will be Simultaneously Dedicated to a 120-acre proration unit. This unit will be formed by combining the existing 40 acres already dedicated to the Eunice King Well No. 24 with an additional 80-acres incorporating the Eunice King Well No. 19. This 120-acre gas proration unit will comprise the W/2 NW/4 and NE/4 NW/4 of Section 28, T-21-S, R-37-E, NMPM, Lea County, New Mexico. By so forming this 120-acre proration unit, we also hereby waive any objection to the unorthodox location of Eunice King Well No. 24. That location being 2086 feet FNL, and 760 feet FWL of Section 28, T-21-S, R-37-E, NMPM, Lea County, New Mexico.

Company: HONDO DRILLING COMPANY

Representative: Nathan W. Outlaw

Signature: 

Title: President

Date: November 14, 1990



**Chevron U.S.A. Inc.**  
P.O. Box 1150, Midland, TX 79702

November 7, 1990

Waiver Request  
Non-Standard Gas Proration Unit,  
and Simultaneous Dedication  
Blinebry Oil and Gas Pool  
660' FSL AND 1980' FWL  
SECTION 28, T-21-S, R-37-E, NMPM  
LEA COUNTY, NEW MEXICO

J.H. Hendrix  
223 W. Wall  
Midland, Texas 79701

Gentlemen:

Attached is a copy of Chevron's administrative application for NMOCD approval of a Non-Standard Gas Proration Unit, and Simultaneous Dedication in the Blinebry Oil and Gas Pool.

As a result of adding perforations in the Blinebry pay it is necessary to reclassify Chevron's Eunice King Well No. 19 from a Blinebry Oil well to a Blinebry Gas well. This well will be located 660 feet FNL, and 1980 feet FWL of section 28, T-21-S, R-37-E, Lea County, New Mexico.

To prevent waste, Chevron is requesting the NMOCD to grant approval to form a 120-acre gas proration unit comprising the W/2 NW/4 and NE/4 NW/4, Section 28, T-21-S, R-37-E, Lea County, New Mexico. This 120-acre gas proration unit will be formed by combining the 40-acres already dedicated to our Eunice King Well No. 24 (NSP Order No. R-8170) occupying the SW/4 NW/4 of Section 28 with an additional currently undedicated 80-acres comprising N/2 NW/4 of Section 28 and incorporating Eunice King Well No. 19. Chevron then plans to simultaneously dedicate the 120-acres to both Eunice King Well Nos. 19 & 24.

As an offset operator, if you do not have any objections to the attached application, please sign the enclosed waivers and mail the original and two copies to the NMOCD in Santa Fe and one copy to the NMOCD in Hobbs. We would also request that you send a copy to Chevron U.S.A. Inc. in Midland. We have enclosed self

addressed, stamped envelopes for your convenience.

If you have any questions, please contact Mr. A. W. Bohling at (915) 687-7246. Your prompt consideration in the above matter is appreciated.

Yours very truly,

*Alan W. Bohling*

A. W. Bohling  
Proration Engineer

AWB  
Attachments

DIVISION  
90 DEC 18 AM 8 57

**CHEVRON U.S.A. INC.**  
Eunice King Lease

Application For Non-Standard  
Gas Proration Unit,  
and  
Simultaneous Dedication of Acreage  
Blinebry Oil & Gas  
660' FNL and 1980' FWL  
Section 28, T21S, R37E  
Lea County, New Mexico

**WAIVER TO OBJECTION**

We, the undersigned, as an offset operator, waive any objection to Chevron U.S.A. Inc.'s application for NMOCD approval of a Non-Standard Gas Proration Unit in the Blinebry Oil and Gas Pool. We further understand that the Eunice King Well No. 19 along with the Eunice King Well No. 24 will be Simultaneously Dedicated to a 120-acre proration unit. This unit will be formed by combining the existing 40 acres already dedicated to the Eunice King Well No. 24 with an additional 80-acres incorporating the Eunice King Well No. 19. This 120-acre gas proration unit will comprise the W/2 NW/4 and NE/4 NW/4 of Section 28, T-21-S, R-37-E, NMPM, Lea County, New Mexico. By so forming this 120-acre proration unit, we also hereby waive any objection to the unorthodox location of Eunice King Well No. 24. That location being 2086 feet FNL, and 760 feet FWL of Section 28, T-21-S, R-37-E, NMPM, Lea County, New Mexico.

Company: John H. Hendrix Corporation  
Representative: Rennie H. Westbrook  
Signature: Rennie H. Westbrook  
Title: Vice President  
Date: 12/12/90



**Chevron U.S.A. Inc.**  
P.O. Box 1150, Midland, TX 79702

November 7, 1990

Waiver Request  
Non-Standard Gas Proration Unit,  
and Simultaneous Dedication  
Blinebry Oil and Gas Pool  
660' FSL AND 1980' FWL  
SECTION 28, T-21-S, R-37-E, NMPM  
LEA COUNTY, NEW MEXICO

Mobil  
P.O. Box 1800  
Hobbs, New Mexico 88240

Gentlemen:

Attached is a copy of Chevron's administrative application for NMOCD approval of a Non-Standard Gas Proration Unit, and Simultaneous Dedication in the Blinebry Oil and Gas Pool.

As a result of adding perforations in the Blinebry pay it is necessary to reclassify Chevron's Eunice King Well No. 19 from a Blinebry Oil well to a Blinebry Gas well. This well will be located 660 feet FNL, and 1980 feet FWL of section 28, T-21-S, R-37-E, Lea County, New Mexico.

To prevent waste, Chevron is requesting the NMOCD to grant approval to form a 120-acre gas proration unit comprising the W/2 NW/4 and NE/4 NW/4, Section 28, T-21-S, R-37-E, Lea County, New Mexico. This 120-acre gas proration unit will be formed by combining the 40-acres already dedicated to our Eunice King Well No. 24 (NSP Order No. R-8170) occupying the SW/4 NW/4 of Section 28 with an additional currently undedicated 80-acres comprising N/2 NW/4 of Section 28 and incorporating Eunice King Well No. 19. Chevron then plans to simultaneously dedicate the 120-acres to both Eunice King Well Nos. 19 & 24.

As an offset operator, if you do not have any objections to the attached application, please sign the enclosed waivers and mail the original and two copies to the NMOCD in Santa Fe and one copy to the NMOCD in Hobbs. We would also request that you send a copy to Chevron U.S.A. Inc. in Midland. We have enclosed self



addressed, stamped envelopes for your convenience.

If you have any questions, please contact Mr. A. W. Bohling at (915) 687-7246. Your prompt consideration in the above matter is appreciated.

Yours very truly,

A handwritten signature in cursive script that reads "Alan W. Bohling".

A. W. Bohling  
Proration Engineer

AWB  
Attachments

CHEVRON U.S.A. INC.  
Eunice King Lease

DEC 20 1990

Application For Non-Standard  
Gas Proration Unit,  
and  
Simultaneous Dedication of Acreage  
Blinebry Oil & Gas  
660' FNL and 1980' FWL  
Section 28, T21S, R37E  
Lea County, New Mexico

WAIVER TO OBJECTION

We, the undersigned, as an offset operator, waive any objection to Chevron U.S.A. Inc.'s application for NMOC approval of a Non-Standard Gas Proration Unit in the Blinebry Oil and Gas Pool. We further understand that the Eunice King Well No. 19 along with the Eunice King Well No. 24 will be Simultaneously Dedicated to a 120-acre proration unit. This unit will be formed by combining the existing 40 acres already dedicated to the Eunice King Well No. 24 with an additional 80-acres incorporating the Eunice King Well No. 19. This 120-acre gas proration unit will comprise the W/2 NW/4 and NE/4 NW/4 of Section 28, T-21-S, R-37-E, NMPM, Lea County, New Mexico. By so forming this 120-acre proration unit, we also hereby waive any objection to the unorthodox location of Eunice King Well No. 24. That location being 2086 feet FNL, and 760 feet FWL of Section 28, T-21-S, R-37-E, NMPM, Lea County, New Mexico.

Company: MOBIL EXPLORATION & PRODUCING U.S. INC.

Representative: RODNEY C. BOWNS

Signature: 

Title: E&R ENGINEER

Date: 12/18/1990



**Chevron U.S.A. Inc.**  
P.O. Box 1150, Midland, TX 79702

November 7, 1990

Waiver Request  
Non-Standard Gas Proration Unit,  
and Simultaneous Dedication  
Blinebry Oil and Gas Pool  
660' FSL AND 1980' FWL  
SECTION 28, T-21-S, R-37-E, NMPM  
LEA COUNTY, NEW MEXICO

ARCO Oil and Gas  
P.O. Box 1610  
Midland, Texas 79702

Gentlemen:

Attached is a copy of Chevron's administrative application for NMOCD approval of a Non-Standard Gas Proration Unit, and Simultaneous Dedication in the Blinebry Oil and Gas Pool.

As a result of adding perforations in the Blinebry pay it is necessary to reclassify Chevron's Eunice King Well No. 19 from a Blinebry Oil well to a Blinebry Gas well. This well will be located 660 feet FNL, and 1980 feet FWL of section 28, T-21-S, R-37-E, Lea County, New Mexico.

To prevent waste, Chevron is requesting the NMOCD to grant approval to form a 120-acre gas proration unit comprising the W/2 NW/4 and NE/4 NW/4, Section 28, T-21-S, R-37-E, Lea County, New Mexico. This 120-acre gas proration unit will be formed by combining the 40-acres already dedicated to our Eunice King Well No. 24 (NSP Order No. R-8170) occupying the SW/4 NW/4 of Section 28 with an additional currently undedicated 80-acres comprising N/2 NW/4 of Section 28 and incorporating Eunice King Well No. 19. Chevron then plans to simultaneously dedicate the 120-acres to both Eunice King Well Nos. 19 & 24.

As an offset operator, if you do not have any objections to the attached application, please sign the enclosed waivers and mail the original and two copies to the NMOCD in Santa Fe and one copy to the NMOCD in Hobbs. We would also request that you send a copy to Chevron U.S.A. Inc. in Midland. We have enclosed self

addressed, stamped envelopes for your convenience.

If you have any questions, please contact Mr. A. W. Bohling at (915) 687-7246. Your prompt consideration in the above matter is appreciated.

Yours very truly,

*Alan W. Bohling*

A. W. Bohling  
Proration Engineer

AWB  
Attachments

'90 DEC 7 AM 8 42

CHEVRON U.S.A. INC.  
Eunice King Lease

Application For Non-Standard  
Gas Proration Unit,  
and  
Simultaneous Dedication of Acreage  
Blinebry Oil & Gas  
660' FNL and 1980' FWL  
Section 28, T21S, R37E  
Lea County, New Mexico

WAIVER TO OBJECTION

We, the undersigned, as an offset operator, waive any objection to Chevron U.S.A. Inc.'s application for NMOCD approval of a Non-Standard Gas Proration Unit in the Blinebry Oil and Gas Pool. We further understand that the Eunice King Well No. 19 along with the Eunice King Well No. 24 will be Simultaneously Dedicated to a 120-acre proration unit. This unit will be formed by combining the existing 40 acres already dedicated to the Eunice King Well No. 24 with an additional 80-acres incorporating the Eunice King Well No. 19. This 120-acre gas proration unit will comprise the W/2 NW/4 and NE/4 NW/4 of Section 28, T-21-S, R-37-E, NMPM, Lea County, New Mexico. By so forming this 120-acre proration unit, we also hereby waive any objection to the unorthodox location of Eunice King Well No. 24. That location being 2086 feet FNL, and 760 feet FWL of Section 28, T-21-S, R-37-E, NMPM, Lea County, New Mexico.

Company: ARCO Oil & Gas

Representative: J.A. Nicholson

Signature: J.A. Nicholson

Title: District Engineer

Date: 11/29/90



**Chevron U.S.A. Inc.**  
P.O. Box 1150, Midland, TX 79702

November 7, 1990

Waiver Request  
Non-Standard Gas Proration Unit,  
and Simultaneous Dedication  
Blinebry Oil and Gas Pool  
660' FSL AND 1980' FWL  
SECTION 28, T-21-S, R-37-E, NMPM  
LEA COUNTY, NEW MEXICO

Marathon Oil Company  
P.O. Box 552  
Midland, Texas 79702

Gentlemen:

Attached is a copy of Chevron's administrative application for NMOCD approval of a Non-Standard Gas Proration Unit, and Simultaneous Dedication in the Blinebry Oil and Gas Pool.

As a result of adding perforations in the Blinebry pay it is necessary to reclassify Chevron's Eunice King Well No. 19 from a Blinebry Oil well to a Blinebry Gas well. This well will be located 660 feet FNL, and 1980 feet FWL of section 28, T-21-S, R-37-E, Lea County, New Mexico.

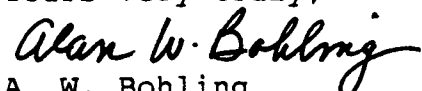
To prevent waste, Chevron is requesting the NMOCD to grant approval to form a 120-acre gas proration unit comprising the W/2 NW/4 and NE/4 NW/4, Section 28, T-21-S, R-37-E, Lea County, New Mexico. This 120-acre gas proration unit will be formed by combining the 40-acres already dedicated to our Eunice King Well No. 24 (NSP Order No. R-8170) occupying the SW/4 NW/4 of Section 28 with an additional currently undedicated 80-acres comprising N/2 NW/4 of Section 28 and incorporating Eunice King Well No. 19. Chevron then plans to simultaneously dedicate the 120-acres to both Eunice King Well Nos. 19 & 24.

As an offset operator, if you do not have any objections to the attached application, please sign the enclosed waivers and mail the original and two copies to the NMOCD in Santa Fe and one copy to the NMOCD in Hobbs. We would also request that you send a copy to Chevron U.S.A. Inc. in Midland. We have enclosed self

addressed, stamped envelopes for your convenience.

If you have any questions, please contact Mr. A. W. Bohling at (915) 687-7246. Your prompt consideration in the above matter is appreciated.

Yours very truly,

A handwritten signature in cursive script that reads "Alan W. Bohling". The signature is written in dark ink and is positioned above the printed name and title.

A. W. Bohling  
Proration Engineer

AWB  
Attachments



DIVISION  
'90 DEC 10 AM 9 18

CHEVRON U.S.A. INC.  
Eunice King Lease

Application For Non-Standard  
Gas Proration Unit,  
and  
Simultaneous Dedication of Acreage  
Blinebry Oil & Gas  
660' FNL and 1980' FWL  
Section 28, T21S, R37E  
Lea County, New Mexico

WAIVER TO OBJECTION

We, the undersigned, as an offset operator, waive any objection to Chevron U.S.A. Inc.'s application for NMOCD approval of a Non-Standard Gas Proration Unit in the Blinebry Oil and Gas Pool. We further understand that the Eunice King Well No. 19 along with the Eunice King Well No. 24 will be Simultaneously Dedicated to a 120-acre proration unit. This unit will be formed by combining the existing 40 acres already dedicated to the Eunice King Well No. 24 with an additional 80-acres incorporating the Eunice King Well No. 19. This 120-acre gas proration unit will comprise the W/2 NW/4 and NE/4 NW/4 of Section 28, T-21-S, R-37-E, NMPM, Lea County, New Mexico. By so forming this 120-acre proration unit, we also hereby waive any objection to the unorthodox location of Eunice King Well No. 24. That location being 2086 feet FNL, and 760 feet FWL of Section 28, T-21-S, R-37-E, NMPM, Lea County, New Mexico.

Company: MARATHON OIL Co.

Representative: DAVID J. LORAN

Signature: David J Loran

Title: ENGINEERING MGR.

Date: 12/6/90

CHEVRON U.S.A. INC.  
Eunice King Lease

'91 FEB 1 AM 8 49

Application for Non-Standard  
Gas Proration Unit and  
Unorthodox Gas Well Location  
Blinebry Oil and Gas Pool  
554' FNL and 554' FEL  
Section 28, T-21-S, R-37-E  
Lea County, New Mexico

WAIVER TO OBJECTION

We the undersigned, as an offset operator, waive any objection to Chevron U.S.A. Inc.'s application for NMOC approval of a Non-Standard Gas Proration Unit and Unorthodox Gas Well Location in the Blinebry Oil and Gas Pool. We further understand that the Eunice King Well No. 13 which currently has 40-acres dedicated to it, will be increased to an 80-acre Non-Standard Gas Proration Unit. This 80-acre gas proration unit will comprise the E/2 of the NE/4 of Section 28, T-21-S, R-37-E, Lea County, New Mexico. We also waive any objection to the unorthodox location of the Eunice King Well No. 13 of 554 feet FNL and 554 feet FEL of Section 28, T-21-S, R-37-E, NMPM, Lea County, New Mexico.

Company: MARATHON OIL COMPANY

Representative: \_\_\_\_\_

Signature: David J. [Signature]

Title: ENGINEERING MANAGER

Date: 1/20/91