



RECEIVED
N DIVISION
FEB 19 1992

February 18, 1992

New Mexico Oil Conservation Division
P.O. Box 2088
Santa Fe, NM 87501

RE: Non-Standard Gas Proration Unit
State N Lease, Well #1
Eumont Field
Lea Co., New Mexico

Dear Sirs:

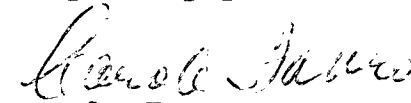
Citation Oil & Gas Corp. herewith respectfully submits its application for a Non-Standard Gas Proration Unit on the above well. The following documents are enclosed:

1. Well Schematic
2. Well History
3. Form C-116, Gas-Oil Ratio Test
4. List of Offset Operators
5. Mailing Affidavit
6. Location Plat showing 40-acre Proration Unit.
7. Map with Offset Operators identified.

The #1 well is 330' from its nearest boundary with the legal spacing being 660'. Since the #1 was drilled in 1938 and prior to the 8-12-54 effective spacing rules date, I understand it is grandfathered in under these rules and no unorthodox location exception will be necessary.

Along with our Non-Standard Gas Proration Unit request, we would respectfully request that this well be re-classified from oil to gas. Please advise if additional data is needed for either of these requests. Thank you for your assistance.

Very truly yours,


Carole Favro
Production Administrative Manager

CF02182/ci

cc: M. Bing
K. Kane

General Purpose Worksheet

Subject	STATE "N" # 1	Page No.	1	Of	1
File	EUMONT Field	By	T. Day	Date	

PRESENT STATUS

DF to GL = 10'

No RECORD of SURFACE CASING.

11" hole

8 5/8" 28# csg @ 1629' w/ 600 sx cmt Circ'd.

Completion Assembly

12 jts 2 3/8" EUE BRD 4.7# J-55 +bg
118 jts 2 3/8" 4.7# J-55 EUE 10V +bg
2 3/8" SN @ 3819'
2 3/8" PERF'd sub
2 3/8" MA btmd @ 3849'

7 7/8" hole

TDC behind 5 1/2" csg @ 3160' by CBL.

Zone Depth 22
YATES 3325-3327
7 RV 3680-34
QU E4000-354
PEN E4160-514

Yates perfs 3328-3711' (18 shots) 1977

5 1/2" 14# csg @ 3806' w/ 100 sx cmt.

4 3/4" hole

QUEEN OH 3806-3946'

Rod Detail

152 - 3/4" rods
2" x 1 1/4" RHBC x 12' pump

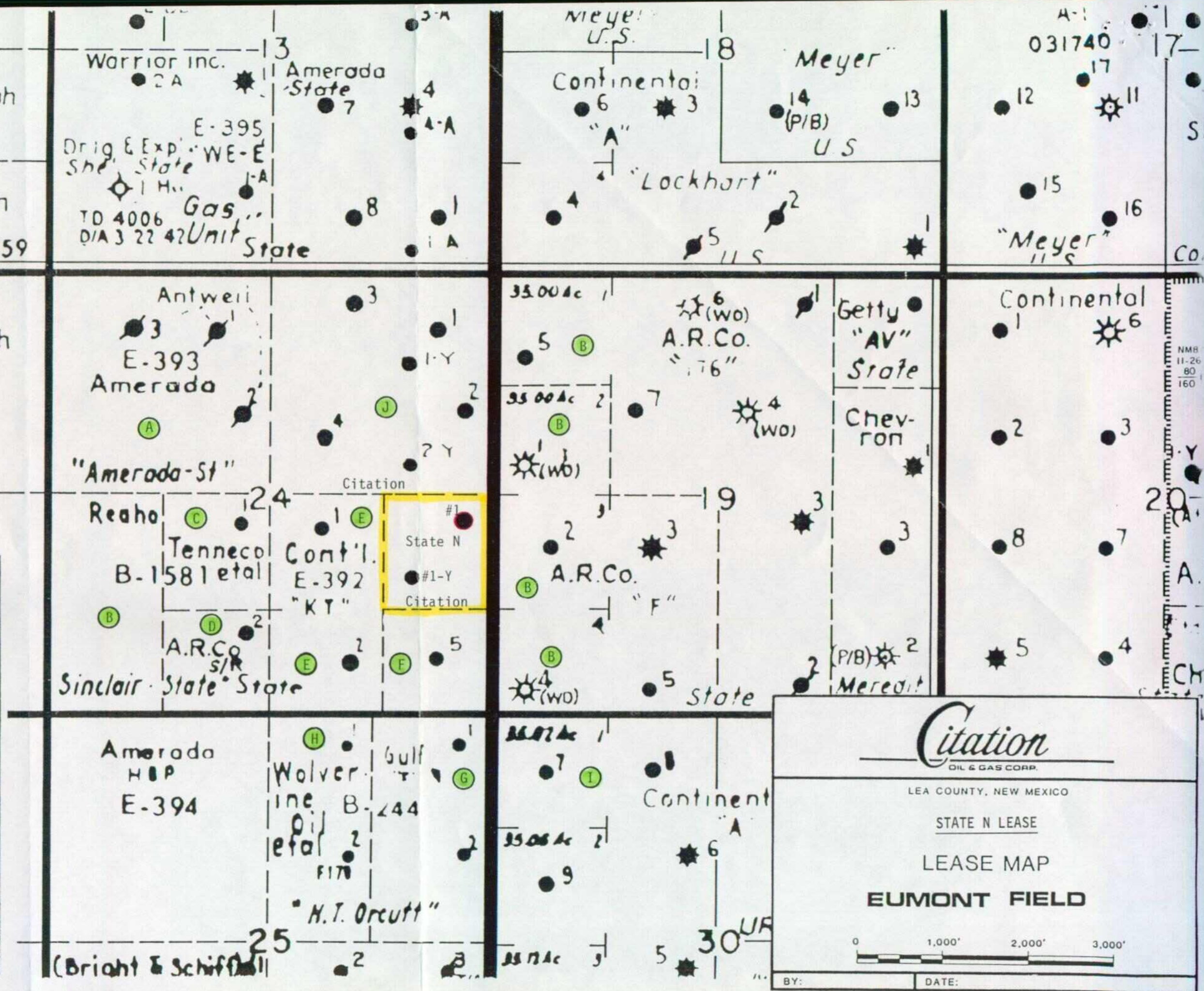
(-300'ss)

TD 3946'

LEGEND FOR OFFSET OPERATORS:

- A - AMERADA HESS CORPORATION
- B - ARCO OIL & GAS CO.
- C - FINA OIL & CHEMICAL CO.
- D - BEC CORPORATION
- E - LEWIS B. BURLESON, INC.
- F - WARRIOR, INC.
- G - CHEVRON U.S.A., INC.
- H - WOLVERINE OIL & GAS CO., INC.
- I - CONOCO INC.
- J - CITATION OIL & GAS CORP.

CITATION'S STATE N LEASE
and 40-acre Proration Unit



STATE N LEASE #1
Eumont (Yates-7R-Queens) Field
2310' FSL & 330' FEL of Sec. 24, T215, R35E
Lea County, New Mexico

WELL HISTORY

09-25-38 Well spud on 9-25-38 and drilled to a depth of 3946'.
Ran 5 1/2" production casing to 3806'. Began producing.

10-24-38 Acidized with 5000 gals. acid. Flowed 38 BOPD and 1,200
MDFD gas.

12-18-38 Acidized w/5000 gals. acid below packer set @ 3855'.
Flowing 106 BO with GOR of 4770:1.

01-39 Acidized OH 3806-3946' w/18,000 gal. acid in 4 stages.

03-27-55 Well T.A'd due to low production and excessive GOR. To
drill replacement well #1-Y.

07-01-60 Well placed back on production.

11-29-60 Well frac'd with 10,000 gal. frac material. Well flowing
87 BOPD.

07-26-62 Acidized w/1000 gals. 15% NEA.

08-13-63 Treated w/1000 gals. 15% NEA.

12-72 SI due to low production.

06-77 Acidized Yates perf's w/5000 gals. 30 qual foamed acid in
25 stages. Frac'd w/20,000 gals in 4 stages. Ran rods
& pump. Set pumping unit. Pumping 42 BOPD & 220 MCFD
from Yates-7R-Queen.

01-10-90 Shut well in.

Submit 2 copies to Appropriate
District Office.
DISTRICT I
P.O. Box 1980, Hobbs, NM 88240
DISTRICT II
P.O. Drawer DD, Artesia, NM 88210
DISTRICT III
1000 Rio Brazos Rd., Aztec, NM 87410

State of New Mexico
Energy, Minerals and Natural Resources Department
OIL CONSERVATION DIVISION
P.O. Box 2088
Santa Fe, New Mexico 87504-2088

Form C-116
Revised 1/1/89

GAS - OIL RATIO TEST

Operator		Pool		County										
Citation Oil & Gas Corp		Eumont Yates 7 Rivers Queen		Lea Co.										
Address 16800 Greenspoint PK Dr Suite 300 South Atrium Houston, Texas 77060		TYPE OF TEST - (X)		Completion <input type="checkbox"/> Special <input type="checkbox"/>										
LEASE NAME	WELL NO.	LOCATION				DATE OF TEST	CHOKE SIZE	TBG. PRESS.	DAILY ALLOW-ABLE	LENGTH OF TEST HOURS	PROD. DURING TEST		GAS - OIL RATIO CU FT/BBL.	
		U	S	T	R						WATER BBL.S.	OIL BBL.S.		GAS MCF.
State M	1	H	01	21S	35E	Temporarily Abandoned				24	218	9	20	2222
	2	I	01	21S	35E	6-18-89	P	22		24	6	1	50	50000
	3	A	01	21S	35E	6-19-89	P	22		24	8	2	54	27000
	5	0	01	21S	35E	6-20-89	P	22		24	20	2	52	26000
	6	J	01	21S	35E	6-21-89	P	24		24	22	3	131	43666
State N	7	G	01	21S	35E	6-22-89	P	22		24	6	3	100	33333
	8	B	01	21S	35E	6-24-89	P	24		24	2	1	213	213000
	1	I	24	21S	35E	6-14-89	P	20						
	1Y	I	24	21S	35E	TEMPORARILY ABANDONED								

Instructions:

During gas-oil ratio test, each well shall be produced at a rate not exceeding the top unit allowable for the pool in which well is located by more than 25 percent. Operator is encouraged to take advantage of this 25 percent tolerance in order that well can be assigned increased allowables when authorized by the Division.

Gas volumes must be reported in MCF measured at a pressure base of 15.025 psia and a temperature of 60° F. Specific gravity base will be 0.60.

Report casing pressure in lieu of tubing pressure for any well producing through casing.

(See Rule 301, Rule 1116 & appropriate pool rules.)

I hereby certify that the above information is true and complete to the best of my knowledge and belief.

Signature

Lee Ann Elsom/Production Analyst

Printed name and title

7/12/89

713/874-9877

Date

Telephone No.

STATE N LEASE
Eumont Field
Lea County, New Mexico

OFFSET OPEATORS

- A. Amerada Hess Corporation
P.O. Box 840
Seminole, Texas 79360
- B. Arco Oil and Gas Company
Division of Atlantic Richfield
P.O. Box 1710
Hobbs, New Mexico 88240
- C. Fina Oil and Chemical Co.
6 Desta Drive, Suite 4400
P.O. Box 2990
Midland, Texas 79702
- D. BEC Corporation
P.O. Box 1392
Midland, Texas 79702
- E. Lewis B. Burleson, Inc.
P.O. Box 2479
Midland, Texas 79702
- F. Warrior, Inc.
21515 Hawthorne Blvd., Suite #625
Torrance, California 90503-6595
- G. Chevron U.S.A. Inc.
P.O. Box 670
Hobbs, New Mexico 88240
or
1301 McKinney Avenue
Houston, Texas 77010
- H. Wolverine Oil & Gas Co., Inc.
One Riverfront Plaza
Grand Rapids, Michigan 49503
- I. Conoco Inc.
10 Desta Drive
P.O. Box 1959
Midland, Texas 79705

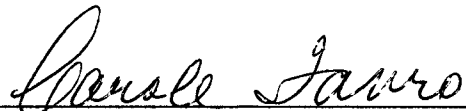
AFFIDAVIT OF MAILING

CITATION OIL & GAS CORP.

Non-Standard Gas Proration Unit Application
State N Lease, Well #
Eumont Field
Lea County, New Mexico

The undersigned hereby certifies that he/she is duly authorized agent for the applicant and that on the 19th day of February, 1992, a true and correct copy of the application referenced above was mailed to the parties on the attached Mailing List.

Signed this 19th day of February, 1992.


Carole Favro
Production Admin. Manager

Subscribed and sworn to before me this 19th day of February, 1992.


Notary Public
My Commission Expires: 2-27-93



OIL CONSERVATION DIVISION

P.O. Box 2088
Santa Fe, New Mexico 87504-2088

DISTRICT I

P.O. Box 1980, Hobbs, NM 88240

DISTRICT II

P.O. Drawer DD, Artesia, NM 88210

DISTRICT III

1000 Rio Brazos Rd., Aztec, NM 87410

WELL LOCATION AND ACREAGE DEDICATION PLAT

All Distances must be from the outer boundaries of the section

Operator Citation Oil & Gas Corp.			Lease State N		Well No. 1
Unit Letter I	Section 24	Township 21S	Range 35E	County NMPM	Lea
Actual Footage Location of Well: 2310 feet from the South line and 330 feet from the East line					
Ground level Elev. 3636	Producing Formation Seven Rivers Yates		Pool Eumont	Dedicated Acreage: 40 Acres	

1. Outline the acreage dedicated to the subject well by colored pencil or hatchure marks on the plat below.

2. If more than one lease is dedicated to the well, outline each and identify the ownership thereof (both as to working interest and royalty).

3. If more than one lease of different ownership is dedicated to the well, have the interest of all owners been consolidated by communitization, unitization, force-pooling, etc.?

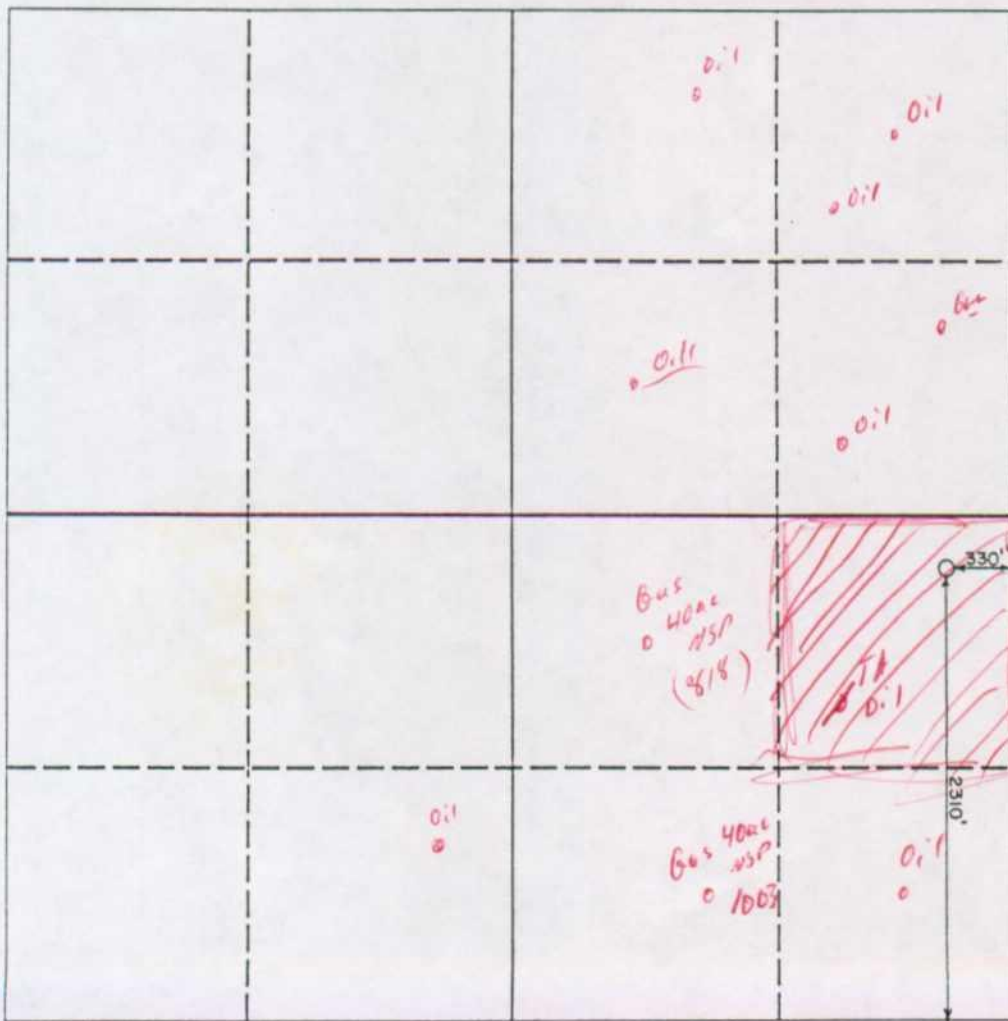
☐ Yes

☐ No

If answer is "yes" type of consolidation

If answer is "no" list the owners and tract descriptions which have actually been consolidated. (Use reverse side of this form if necessary.)

No allowable will be assigned to the well until all interests have been consolidated (by communitization, unitization, forced-pooling, or otherwise) or until a non-standard unit, eliminating such interest, has been approved by the Division.



OPERATOR CERTIFICATION

I hereby certify that the information contained herein is true and complete to the best of my knowledge and belief.

Signature

Carole Favro

Printed Name

Carole Favro

Position

Production Admin. Manager

Company

Citation Oil & Gas Corp.

Date

2-18-92

SURVEYOR CERTIFICATION

I hereby certify that the well location shown on this plat was plotted from field notes of actual surveys made by me or under my supervision, and that the same is true and correct to the best of my knowledge and belief.

Date Surveyed

Signature & Seal of
Professional Surveyor

Certificate No.

0 330 660 990 1320 1650 1980 2310 2640 2000 1500 1000 500 0



STATE OF NEW MEXICO
ENERGY, MINERALS AND NATURAL RESOURCES DEPARTMENT

OIL CONSERVATION DIVISION
HOBBS DISTRICT OFFICE

RECEIVED
FEB 28 AM 9 31

2-24-92

BRUCE KING
GOVERNOR

POST OFFICE BOX 1980
HOBBS, NEW MEXICO 88241-1980
(505) 393-6161

OIL CONSERVATION DIVISION
P. O. BOX 2088
SANTA FE, NEW MEXICO 87501

RE: Proposed:

MC _____
DHC _____
NSL _____
NSP X _____
SWD _____
WFX _____
PMX _____

Gentlemen:

I have examined the application for the:

Citation oil & Gas Corp State 77 #1-I 24-21-35
Operator Lease & Well No. Unit S-T-R

and my recommendations are as follows:

OK

Yours very truly,

Jerry Sexton

Jerry Sexton
Supervisor, District 1

/ed