

NSP(L)(SD) 10/12/99

# RAPTOR RESOURCES, INC.

901 Rio Grande

Austin, Texas 78701

(512) 478-4427

September 14, 1999

Mr. Michael Stogner  
New Mexico Oil Conservation Division  
2040 Pacheco  
Santa Fe, New Mexico 87504

RE: Application for reduction of an existing non-standard Jalmat Gas proration unit, S/2 Sec.3, T 23S, R 36E, Lea County, New Mexico, State 'A' A/C Well No. 48.

Dear Mr. Stogner,

Raptor Resources, Inc. respectfully requests your approval of this administrative application for the reduction of the existing 320-acre non-standard gas spacing and proration unit comprising the N/2 of Section 3, Township 23 South, Range 36E, Jalmat Gas Pool, Lea County, New Mexico, to a 280-acre unit by deleting the SE/4 SW/4 of said Section 23 because the No. 48 is being reclassified as an oil well effective January 1, 2000.

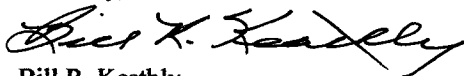
Enclosed is the 40-acre plat for No. 48 and revised plats for all wells in this proration unit.

The offset operator plat shows that Arco Permian, Arch Petroleum Inc, Gruy Petroleum Management Co. and Texaco, as the offset operators that could be affected by this unorthodox location. Please find enclosed evidence that they have been notified of this application.

Raptor Resources, Inc. respectfully requests your approval of this application for an unorthodox location and simultaneous dedication. A copy of this letter and attachments has been furnished by Certified Mail to the offset operators as their notice of this application.

If you have any questions or require any further information concerning this application, please contact me at (915) 697-1609 or e-mail me at [BRKeathly@juno.com](mailto:BRKeathly@juno.com).

Sincerely,



Bill R. Keathly  
Regulatory Agent for Raptor Resources

Cc: Oil Conservation Division - Hobbs

State "A" A/C 1 # 48  
Section 3, T-23S, R-36E, (N)  
API # 30-025-09233  
Lea County, New Mexico

**RE: Application for Unorthodox Location**

**Notification of Offset Operators:**

Arco Permian  
P.O. Box 1610  
Midland, TX 79702-1610

Arch Petroleum Inc  
P.O. Box 10340  
Midland, TX 79702-7340

Texaco  
P.O. Box 3109  
Midland, TX 79702

Gruy Petroleum Management Co.  
P.O. Box 140907  
Irving, TX 75014-0907

Please find attached evidence that the above listed companies have been sent copies of the Non-standard location request.

Z 444 966 562

US Postal Service  
**Receipt for Certified Mail**  
 No Insurance Coverage Provided.  
 Do not use for International Mail (See reverse)

PS Form 3800, April 1995 *State A A/C1 #48*

Sent to <i>Arco Permian</i>	
Street & Number <i>Box 1410</i>	
Post Office, State, & ZIP Code <i>Irving, TX 75014</i>	
Postage	\$ 77
Certified Fee	140
Special Delivery Fee	
Restricted Delivery Fee	
Return Receipt Showing to Whom & Date Delivered	125
Return Receipt Showing to Whom, Date, & Addressee's Address	
TOTAL Postage & Fees	\$ 342
Postmark or Date	SEP 16 1999 TX VILLAGE STA

Z 444 966 559

US Postal Service  
**Receipt for Certified Mail**  
 No Insurance Coverage Provided.  
 Do not use for International Mail (See reverse)

PS Form 3800, April 1995 *State A A/C1 #48*

Sent to <i>Arco Permian</i>	
Street & Number <i>Box 1410</i>	
Post Office, State, & ZIP Code <i>Midland, TX 79702</i>	
Postage	\$ 77
Certified Fee	140
Special Delivery Fee	
Restricted Delivery Fee	
Return Receipt Showing to Whom & Date Delivered	125
Return Receipt Showing to Whom, Date, & Addressee's Address	
TOTAL Postage & Fees	\$ 342
Postmark or Date	SEP 16 1999 TX VILLAGE STA

Z 444 966 561

US Postal Service  
**Receipt for Certified Mail**  
 No Insurance Coverage Provided.  
 Do not use for International Mail (See reverse)

PS Form 3800, April 1995 *State A A/C1 #48*

Sent to <i>Arco Permian</i>	
Street & Number <i>Box 1410</i>	
Post Office, State, & ZIP Code <i>Midland, TX 79702</i>	
Postage	\$ 77
Certified Fee	140
Special Delivery Fee	
Restricted Delivery Fee	
Return Receipt Showing to Whom & Date Delivered	125
Return Receipt Showing to Whom, Date, & Addressee's Address	
TOTAL Postage & Fees	\$ 342
Postmark or Date	SEP 16 1999 TX VILLAGE STA

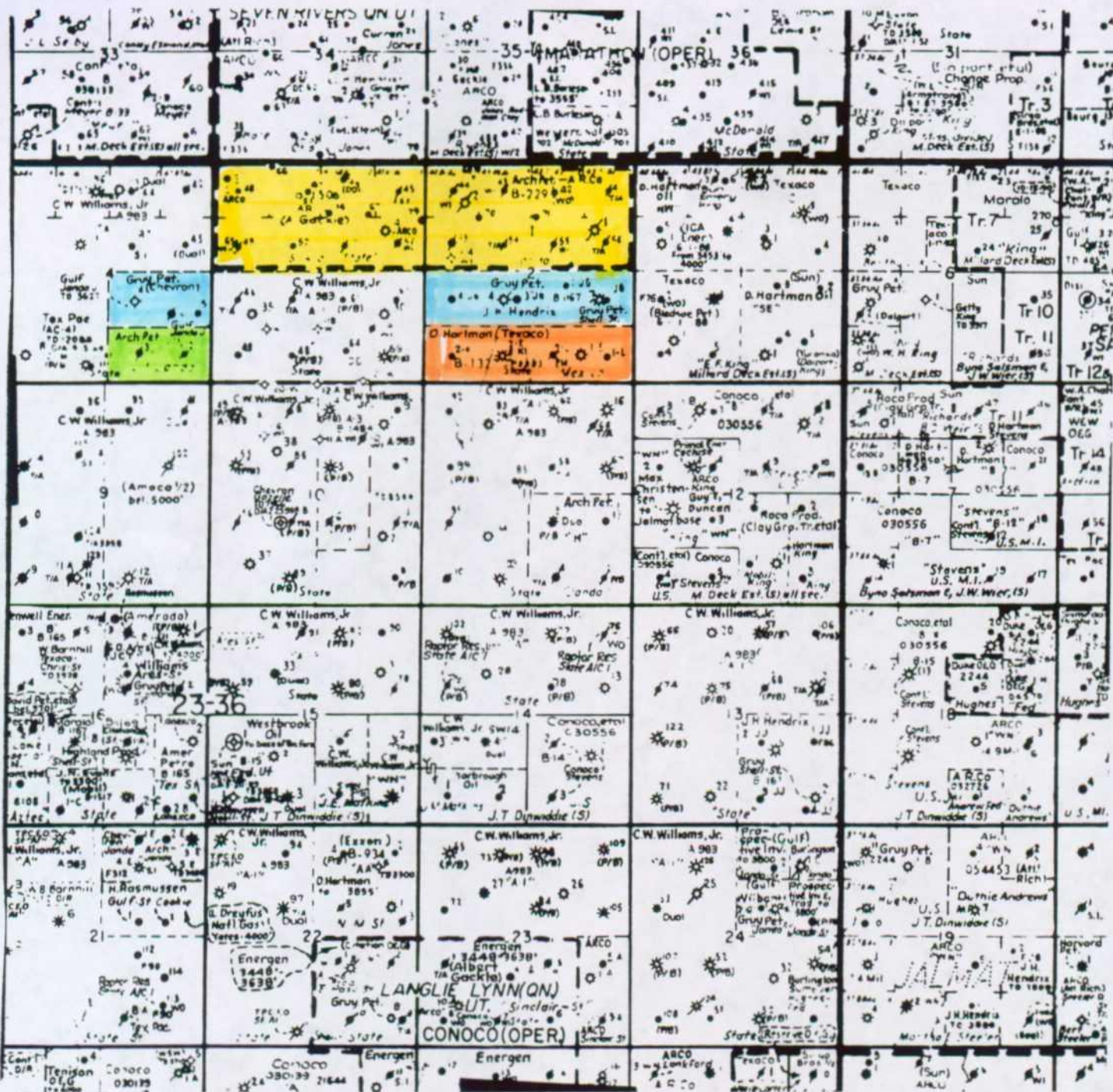
Z 444 966 560

US Postal Service  
**Receipt for Certified Mail**  
 No Insurance Coverage Provided.  
 Do not use for International Mail (See reverse)

PS Form 3800, April 1995 *State A A/C1 #48*

Sent to <i>Arco Permian</i>	
Street & Number <i>Box 1410</i>	
Post Office, State, & ZIP Code <i>Midland, TX 79702</i>	
Postage	\$ 77
Certified Fee	140
Special Delivery Fee	
Restricted Delivery Fee	
Return Receipt Showing to Whom & Date Delivered	125
Return Receipt Showing to Whom, Date, & Addressee's Address	
TOTAL Postage & Fees	\$ 342
Postmark or Date	SEP 16 1999 TX VILLAGE STA

Arco Permian  
Arch Petroleum  
Texaco  
Gruy Prod. Mgmt



District I  
PO Box 1980, Hobbs, NM 88241-1980  
District II  
PO Drawer DD, Artesia, NM 88211-0719  
District III  
1000 Rio Brazos Rd. Aztec, NM 87410  
District IV  
PO Box 2088, Santa Fe, NM 87504-2088

State of New Mexico  
Energy, Minerals & Natural Resources Department

**OIL CONSERVATION DIVISION**  
PO Box 2088  
Santa Fe, NM 87504-2088

Form C-102

Revised February 21, 1994  
instructions on back

Submit to Appropriate District Office  
State Lease - 4 Copies  
Fee Lease - 3 Copies

☐ AMENDED REPORT

**WELL LOCATION AND ACREAGE DEDICATION PLAT**

API Number 30-025-09233		2 Pool Code 33820		3 Pool Name Jalmat, Tnsl, Yts, 7-Rivers - Oil	
4 Property Code 24669		5 Property Name State 'A' A/C 1			6 Well Number 48
7 OGRID No. 162791		8 Operator Name Raptor Resources, Inc,			9 Elevation

**10 Surface Location**

UL or lot no.	Section	Township	Range	Lot Idn	Feet from the	North/South line	Feet from the	East/West line	County
N	3	23S	36E		660	South	1980	West	Lea

**11 Bottom Hole Location If Different From Surface**

UL or lot no.	Section	Township	Range	Lot Idn	Feet from the	North/South line	Feet from the	East/West line	County

12 Dedicated Acres 40	13 Joint or Infill	14 Consolidation Code	15 Order No.
--------------------------	--------------------	-----------------------	--------------

NO ALLOWABLE WILL BE ASSIGNED TO THIS COMPLETION UNTIL ALL INTERESTS HAVE BEEN CONSOLIDATED  
OR A NON-STANDARD UNIT HAS BEEN APPROVED BY THE DIVISION

16			
	<p>A diagram showing a well location. A horizontal line with arrows at both ends is labeled '1980''. A vertical line with arrows at both ends is labeled '660''. The lines intersect at a point, which is marked with a dot. The lines are drawn with a dashed pattern.</p>		

**17 OPERATOR CERTIFICATION**

I hereby certify that the information contained herein is true and complete to the best of my knowledge and belief

Signature

Bill R. Keathly

Printed Name

Regulatory Agent - Raptor

Title

9-10-99

Date

**18 SURVEYOR CERTIFICATION**

I hereby certify that the well location shown on this plat was plotted from field notes of actual surveys made by me or under my supervision, and that the same is true and correct to the best of my belief.

Date of Survey

Signature and Seal of Professional Surveyor:

Certificate Number

District I  
PO Box 1980, Hobbs, NM 88241-1980

District II  
PO Drawer DD, Artesia, NM 88211-0719

District III  
1000 Rio Brazos Rd. Aztec, NM 87410

District IV  
PO Box 2088, Santa Fe, NM 87504-2088

State of New Mexico  
Energy, Minerals & Natural Resources Department

OIL CONSERVATION DIVISION  
PO Box 2088  
Santa Fe, NM 87504-2088

Form C-1

Revised February 21, 19  
instructions on ba

Submit to Appropriate District Offi

State Lease - 4 Copi

Fee Lease - 3 Copi

☐ AMENDED REPORT

WELL LOCATION AND ACREAGE DEDICATION PLAT

API Number <b>30-025-09238</b>	2 Pool Code <b>79240</b>	3 Pool Name <b>Jalmat, Tnsi, Yts, 7-Rivers (Pro Gas)</b>
4 Property Code <b>24669</b>	5 Property Name <b>State 'A' A/C 1</b>	6 Well Number <b>30</b>
7 OGRID No. <b>162791</b>	8 Operator Name <b>Raptor Resources, Inc,</b>	9 Elevation

10 Surface Location

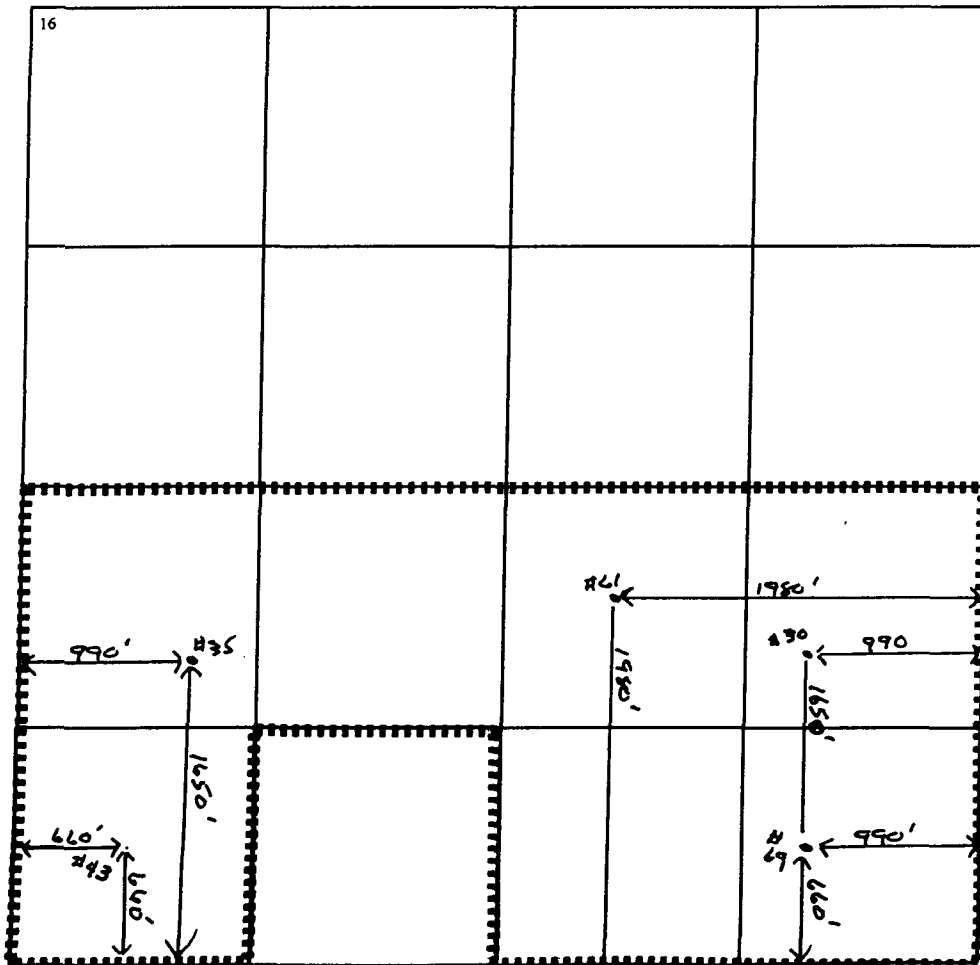
UL or lot no. <b>I</b>	Section <b>3</b>	Township <b>23S</b>	Range <b>36E</b>	Lot Idn	Feet from the <b>1650</b>	North/South line <b>South</b>	Feet from the <b>990</b>	East/West line <b>East</b>	County <b>Lea</b>
---------------------------	---------------------	------------------------	---------------------	---------	------------------------------	----------------------------------	-----------------------------	-------------------------------	----------------------

11 Bottom Hole Location If Different From Surface

UL or lot no.	Section	Township	Range	Lot Idn	Feet from the	North/South line	Feet from the	East/West line	County
---------------	---------	----------	-------	---------	---------------	------------------	---------------	----------------	--------

12 Dedicated Acres <b>280</b>	13 Joint or Infill	14 Consolidation Code	15 Order No.
----------------------------------	--------------------	-----------------------	--------------

NO ALLOWABLE WILL BE ASSIGNED TO THIS COMPLETION UNTIL ALL INTERESTS HAVE BEEN CONSOLIDATED  
OR A NON-STANDARD UNIT HAS BEEN APPROVED BY THE DIVISION



17 OPERATOR CERTIFICATION

I hereby certify that the information contained herein is true and complete to the best of my knowledge and belief

*Bill R. Keathly*  
Signature

Bill R. Keathly

Printed Name

Regulatory Agent - Raptor

Title

Date

18 SURVEYOR CERTIFICATION

I hereby certify that the well location shown on this plat was plotted from field notes of actual surveys made by me or under my supervision, and that the same is true and correct to the best of my belief.

Date of Survey

Signature and Seal of Professional Surveyor:

Certificate Number



**District I**  
PO Box 1980, Hobbs, NM 88241-1980

**District II**  
PO Drawer DD, Artesia, NM 88211-0719  
**District III**  
1000 Rio Brazos Rd. Aztec, NM 87410  
**District IV**  
PO Box 2088, Santa Fe, NM 87504-2088

**State of New Mexico**  
**Energy, Minerals & Natural Resources Department**

## OIL CONSERVATION DIVISION

PO Box 2088  
Santa Fe, NM 87504-2088

Revised February 21, 19  
instructions on ba  
o Appropriate District Offi  
State Lease - 4 Copi  
Fee Lease - 3 Copi

☐ AMENDED REPORT

# WELL LOCATION AND ACREAGE DEDICATION PLAT

API Number 30-025-- 09252		2 Pool Code 79240	3 Pool Name Jalmat, Tnsl, Yts, 7-Rivers (Pro Gas)	
4 Property Code 24669	5 Property Name State 'A' A/C 1			6 Well Number 61
7 OGRID No. 162791	8 Operator Name Raptor Resources, Inc,			9 Elevation

## 10 Surface Location

UL or lot no.	Section	Township	Range	Lot Idn	Feet from the	North/South line	Feet from the	East/West line	County
J	3	23S	36E		1980	South	1980	East	Lea

## 11 Bottom Hole Location If Different From Surface

UL or lot no.	Section	Township	Range	Lot Idn	Feet from the	North/South line	Feet from the	East/West line	County
12 Dedicated Acres 280	13 Joint or Infill	14 Consolidation Code		15 Order No.					

NO ALLOWABLE WILL BE ASSIGNED TO THIS COMPLETION UNTIL ALL INTERESTS HAVE BEEN CONSOLIDATED  
OR A NON-STANDARD UNIT HAS BEEN APPROVED BY THE DIVISION

17 OPERATOR CERTIFICATION

I hereby certify that the information contained herein is true and complete to the best of my knowledge and belief

*Bill R. Keathly*  
Signature

Bill R. Keathly

Printed Name

Regulatory Agent - Raptor

Title

Date

18 SURVEYOR CERTIFICATION

I hereby certify that the well location shown on this plat was plotted from field notes of actual surveys made by me or under my supervision, and that the same is true and correct to the best of my belief.

Date of Survey

Signature and Seal of Professional Surveyor:

Certificate Number

**District II**  
PO Drawer DD, Artesia, NM 88211-0719  
**District III**  
1000 Rio Brazos Rd. Aztec, NM 87410  
**District IV**  
PO Box 2088, Santa Fe. NM 87504-2088

**State of New Mexico**  
**Energy, Minerals & Natural Resources Department**

## OIL CONSERVATION DIVISION

PO Box 2088  
Santa Fe, NM 87504-2088

Form C-1

Revised February 21, 19

instructions on ba

**Submit to Appropriate District Office**

**State Lease - 4 Cops**

**Free Lease - 3 Copi**

☐ AMENDED REPORT

# WELL LOCATION AND ACREAGE DEDICATION PLAT

API Number 30-025-07229		2 Pool Code 79240	3 Pool Name Jalmat, Tnsl, Yts, 7-Rivers (Pro Gas)
4 Property Code 24669	5 Property Name State 'A' A/C 1		6 Well Number 69
7 OGRID No. 162791	8 Operator Name Raptor Resources, Inc,		9 Elevation

## 10 Surface Location

UL or lot no.	Section	Township	Range	Lot Idn	Feet from the	North/South line	Feet from the	East/West line	County
P	3	23S	36E		660	South	990	East	Lea

## 11 Bottom Hole Location If Different From Surface

UL or lot no.	Section	Township	Range	Lot Idn	Feet from the	North/South line	Feet from the	East/West line	County
12 Dedicated Acres 230	13 Joint or Infill	14 Consolidation Code		15 Order No.					

NO ALLOWABLE WILL BE ASSIGNED TO THIS COMPLETION UNTIL ALL INTERESTS HAVE BEEN CONSOLIDATED  
OR A NON-STANDARD UNIT HAS BEEN APPROVED BY THE DIVISION

16

The figure shows a survey plat with a grid background. A dashed rectangular boundary encloses two points labeled H35 and H34. Point H35 is located at the intersection of a horizontal line segment measuring 990' from the left edge and a vertical line segment measuring 1650' from the bottom edge. Point H34 is located below H35, connected by a vertical line segment measuring 640'. From H34, a horizontal line segment measuring 660' extends to the left edge, and another vertical line segment measuring 107' extends down to the bottom edge.



District I  
PO Box 1980, Hobbs, NM 88241-1980  
District II  
PO Drawer DD, Artesia, NM 88211-0719  
District III  
1000 Rio Brazos Rd. Aztec, NM 87410  
District IV  
PO Box 2088, Santa Fe, NM 87504-2088

State of New Mexico  
Energy, Minerals & Natural Resources Department

OIL CONSERVATION DIVISION  
PO Box 2088  
Santa Fe, NM 87504-2088

Form C-1

Revised February 21, 19

Instructions on back

Submit to Appropriate District Office

State Lease - 4 Copies

Fee Lease - 3 Copies

☐ AMENDED REPORT

WELL LOCATION AND ACREAGE DEDICATION PLAT

API Number <b>30-025-09237</b>	2 Pool Code <b>79240</b>	3 Pool Name <b>Jalmat, Tnsi, Yts, 7-Rivers (Pro Gas)</b>
4 Property Code <b>24669</b>	5 Property Name <b>State 'A' A/C 1</b>	6 Well Number <b>35</b>
7 OGRID No. <b>162791</b>	8 Operator Name <b>Raptor Resources, Inc.</b>	9 Elevation

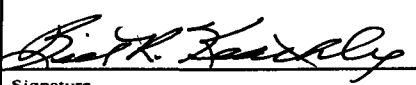
10 Surface Location

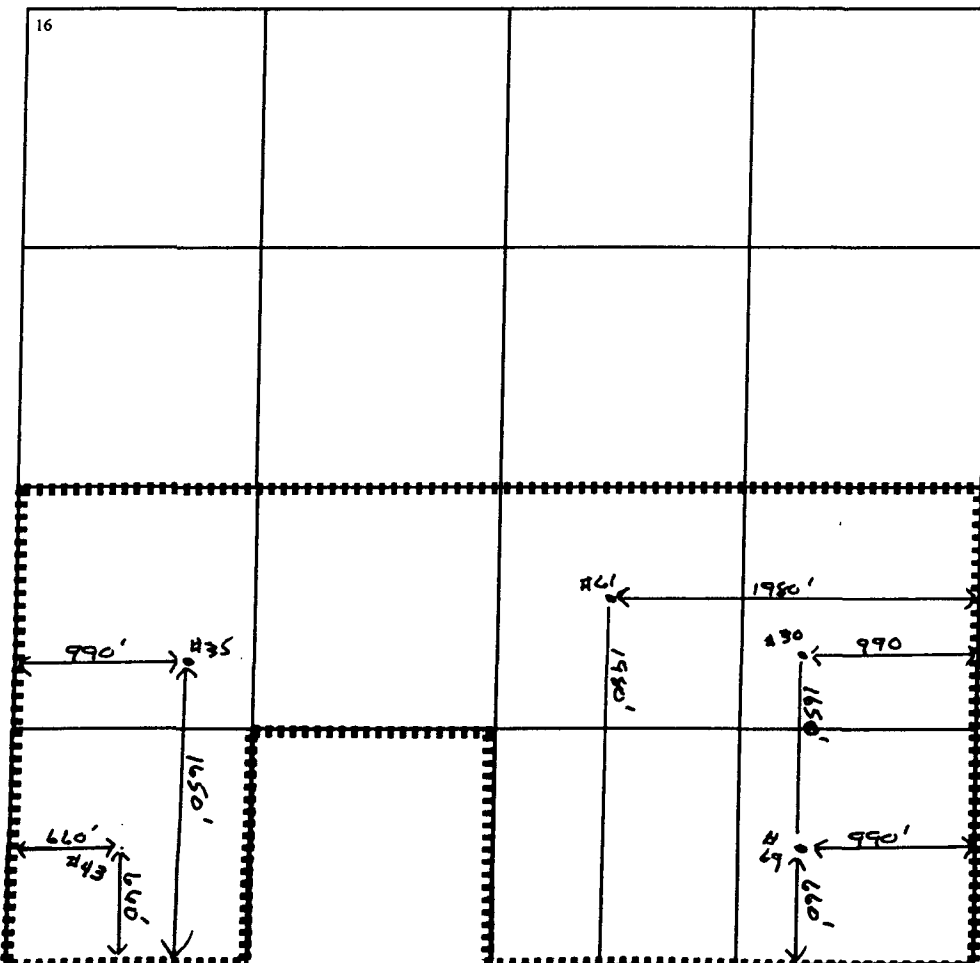
UL or lot no. <b>L</b>	Section <b>3</b>	Township <b>23S</b>	Range <b>36E</b>	Lot Idn	Feet from the <b>1650</b>	North/South line <b>South</b>	Feet from the <b>990</b>	East/West line <b>West</b>	County <b>Lea</b>
---------------------------	---------------------	------------------------	---------------------	---------	------------------------------	----------------------------------	-----------------------------	-------------------------------	----------------------

11 Bottom Hole Location If Different From Surface

UL or lot no.	Section	Township	Range	Lot Idn	Feet from the	North/South line	Feet from the	East/West line	County
12 Dedicated Acres <b>280</b>	13 Joint or Infill	14 Consolidation Code	15 Order No.						

NO ALLOWABLE WILL BE ASSIGNED TO THIS COMPLETION UNTIL ALL INTERESTS HAVE BEEN CONSOLIDATED  
OR A NON-STANDARD UNIT HAS BEEN APPROVED BY THE DIVISION

16	17 OPERATOR CERTIFICATION I hereby certify that the information contained herein is true and complete to the best of my knowledge and belief   Signature <b>Bill R. Keathly</b> Printed Name <b>Regulatory Agent - Raptor</b> Title  Date			
18 SURVEYOR CERTIFICATION I hereby certify that the well location shown on this plat was plotted from field notes of actual surveys made by me or under my supervision, and that the same is true and correct to the best of my belief.  Date of Survey Signature and Seal of Professional Surveyor:  Certificate Number				



District I  
PO Box 1980, Hobbs. NM 88241-1980

District II  
PO Drawer DD, Artesia, NM 88211-0719

District III  
1000 Rio Brazos Rd. Aztec, NM 87410

District IV  
PO Box 2088, Santa Fe. NM 87504-2088

State of New Mexico  
Energy, Minerals & Natural Resources Department

OIL CONSERVATION DIVISION  
PO Box 2088  
Santa Fe, NM 87504-2088

Form C-1

Revised February 21, 19

Instructions on ba

Submit to Appropriate District Offi

State Lease - 4 Copi

Fee Lease - 3 Copi

☐ AMENDED REPORT

### WELL LOCATION AND ACREAGE DEDICATION PLAT

API Number <b>30-025-09236</b>	2 Pool Code <b>79240</b>	3 Pool Name <b>Jalmat, TnsI, Yts, 7-Rivers (Pro Gas)</b>
4 Property Code <b>24669</b>	5 Property Name <b>State 'A' A/C 1</b>	6 Well Number <b>43</b>
7 OGRID No. <b>162791</b>	8 Operator Name <b>Raptor Resources, Inc,</b>	9 Elevation

#### 10 Surface Location

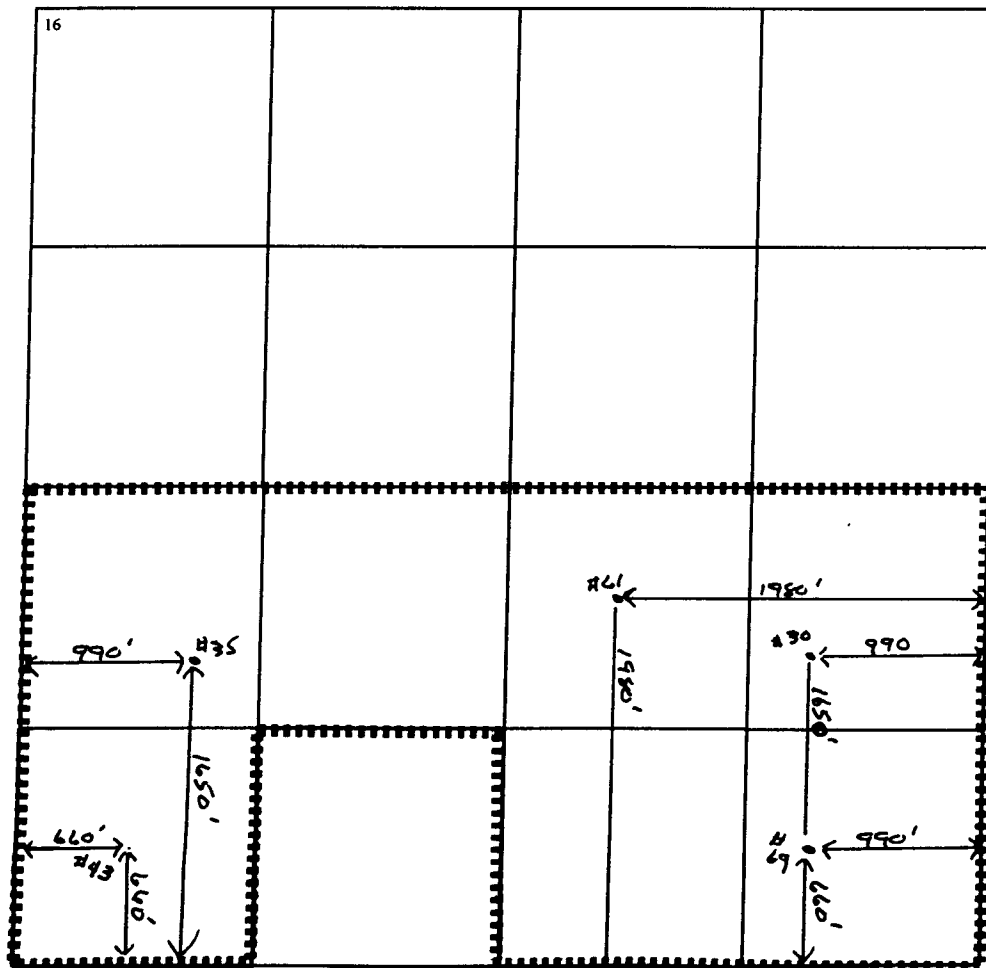
UL or lot no. <b>M</b>	Section <b>3</b>	Township <b>23S</b>	Range <b>36E</b>	Lot Idn	Feet from the <b>660</b>	North/South line <b>South</b>	Feet from the <b>660</b>	East/West line <b>West</b>	County <b>Lea</b>
---------------------------	---------------------	------------------------	---------------------	---------	-----------------------------	----------------------------------	-----------------------------	-------------------------------	----------------------

#### 11 Bottom Hole Location If Different From Surface

UL or lot no.	Section	Township	Range	Lot Idn	Feet from the	North/South line	Feet from the	East/West line	County
---------------	---------	----------	-------	---------	---------------	------------------	---------------	----------------	--------

12 Dedicated Acres <b>280</b>	13 Joint or Infill	14 Consolidation Code	15 Order No.
----------------------------------	--------------------	-----------------------	--------------

NO ALLOWABLE WILL BE ASSIGNED TO THIS COMPLETION UNTIL ALL INTERESTS HAVE BEEN CONSOLIDATED  
OR A NON-STANDARD UNIT HAS BEEN APPROVED BY THE DIVISION



#### 17 OPERATOR CERTIFICATION

I hereby certify that the information contained herein is true and complete to the best of my knowledge and belief

Signature

**Bill R. Keathly**

Printed Name

**Regulatory Agent - Raptor**

Title

Date

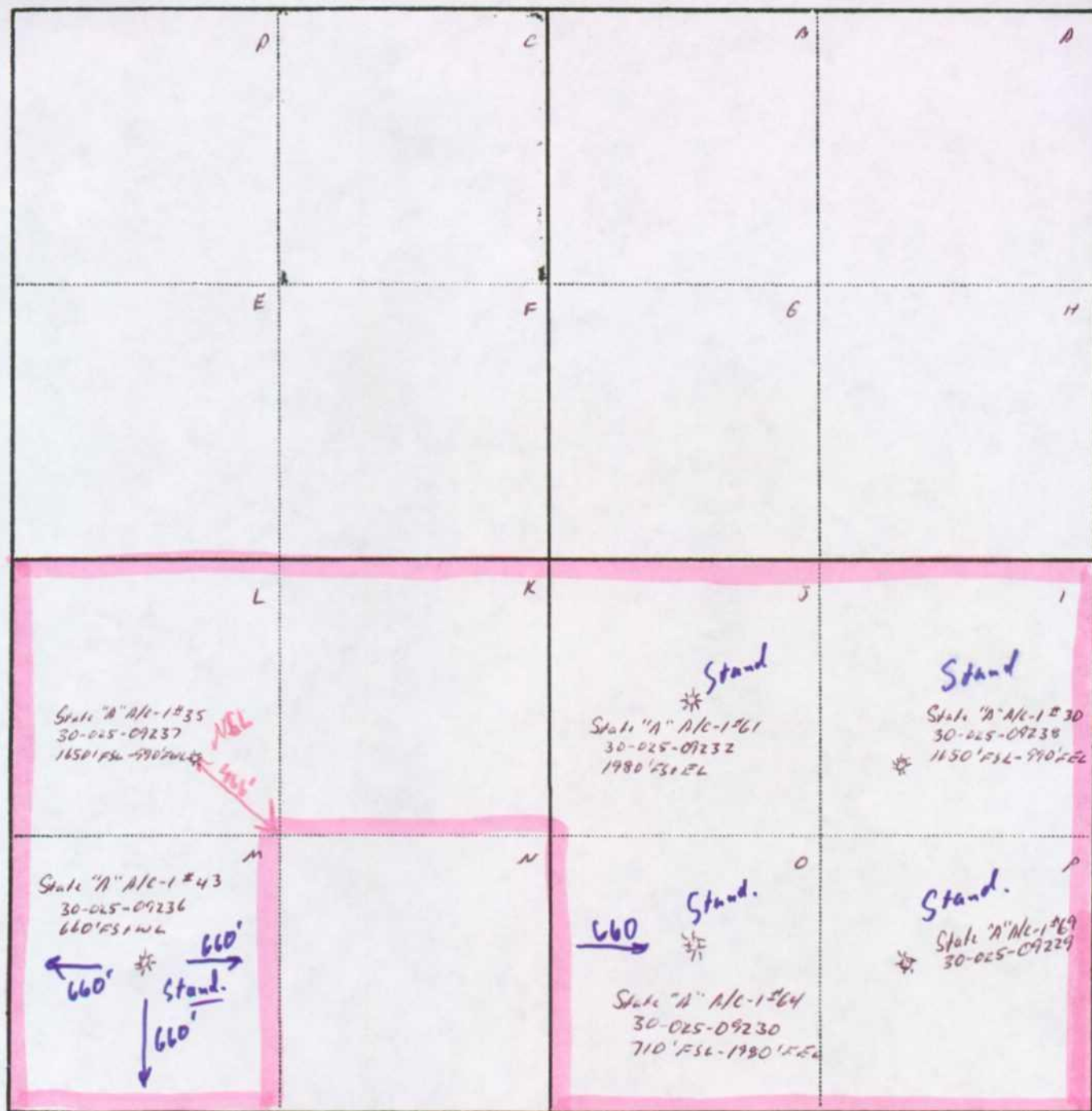
#### 18 SURVEYOR CERTIFICATION

I hereby certify that the well location shown on this plat was plotted from field notes of actual surveys made by me or under my supervision, and that the same is true and correct to the best of my belief.

Date of Survey

Signature and Seal of Professional Surveyor:

Certificate Number




---

---

---

---

---

---

---

---

---

---