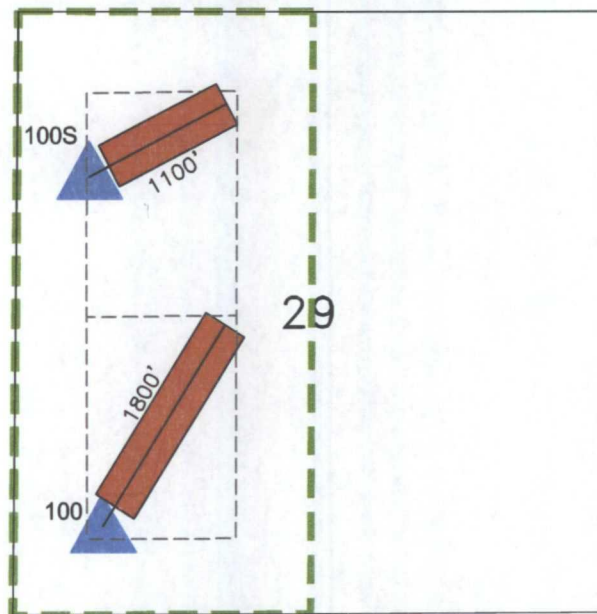
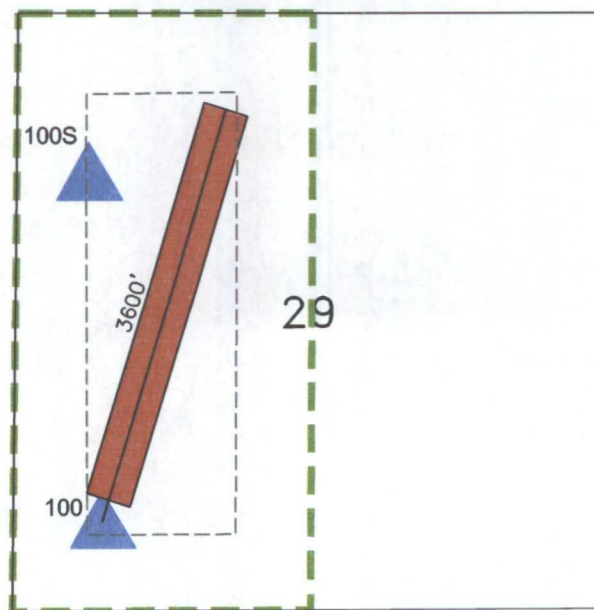


**Elkhorn #100 & #100S**  
**Section 29 - T 32 N - R 5 W**




CURRENTLY ALLOWED DEVELOPMENT SCENARIO



PROPOSED DEVELOPMENT SCENARIO



Legend

-  Existing Vertical Well
-  Proposed Horizontal Sidetrack
-  Application Area

**ENERGEN**  
RESOURCES

FILE: CONY\SJUAN\ANDREW 0511-1