

June 10, 2013

VIA CERTIFIED MAIL
RETURN RECEIPT REQUESTED

TO: AFFECTED PARTIES LISTED ON EXHIBIT "A"

Re: DESIGNATION OF A NON-STANDARD PROJECT AREA BY COG OPERATING LLC
LEA COUNTY, NEW MEXICO

Ladies and Gentlemen:

This letter is to advise you that COG Operating LLC has filed the enclosed Well Dedication and Acreage Plat (C-102) with the New Mexico Oil Conservation Division seeking to designate a non-standard project area in Sections 5 and 8, Township 26 South, Range 34 East, NMPM, Lea County, New Mexico.

As an owner of an interest that may be affected by this application, you are advised that if you have an objection to this application, it must be mailed to COG Operating LLC within twenty (20) days from the date COG Operating LLC mailed this notice. If no interest owner has filed an objection within the 20-day period, then the Division may approve the application.

If you have any questions or concerns, please feel free to contact me at (432) 221-0465. Thank you for your time and attention to this matter.

Sincerely,

Mike Wallace

Mike Wallace
Senior Landman
NM Delaware Basin Team

by SH

Enclosures

BEFORE THE OIL CONSERVATION DIVISION
Santa Fe, New Mexico

Exhibit No. 5

Submitted by: COG OPERATING LLC

Hearing Date: September 18, 2013

EXHIBIT "A"

Chesapeake Exploration, LLC

P.O. Box 18496
Oklahoma City, OK 73154
9171999991703005135387

Devon Energy Production Company LP

20 N. Broadway
Oklahoma City, OK 73102
9171999991703005135394

Chevron U.S.A. Inc.

1400 Smith Street, Room #43028
Houston, TX 77002
9171999991703005135509

EOG Resources, Inc.

4000 N. Big Spring, Suite 500
Midland, TX 79705
9171999991703005135493

Southwest Petroleum Land Services, LLC

100 N. Pennsylvania Ave.
Roswell, NM 88203
9171999991703005135486

Yates Brothers

105 S. 4th St.
Artesia, NM 88210
9171999991703005135479

Warren J. Bates

P.O. Box 1387
Ada, OK 74820
9171999991703005135462

Peder Monsen
515 Houston Ave.
Houston, TX 77007-7706
9171999991703005135455

Peder Monsen
5623 Indian Circle
Houston, TX 77056-1006
9171999991703005135448

Fay Bel Monsen
515 Houston Ave.
Houston, TX 77007-7706
9171999991703005135431

Sugarberry Oil & Gas Corp.
5950 Cedar Springs Rd., Suite 230
Dallas, TX 75235-6803
9171999991703005135424

Marc T. Wray
4 Serpentine Court
Savenoaka, Kent TN 113XR
United Kingdom
9171999991703005135417

Andrew Wray
3406 Shadow Springs Ct.
Houston, TX 77082-8302
9171999991703005135400

DISTRICT I

1625 N. FREMONT DR., ROSA, NM 88240

State of New Mexico
Energy, Minerals and Natural Resources Department

Form C-102

Revised October 12, 2010

DISTRICT II

1301 W. GRAND AVENUE, ARTESIA, NM 88210

OIL CONSERVATION DIVISION

Submit to Appropriate District Office

11885 SOUTH ST. FRANCIS DR.

State Lease - 4 Copies

Fee Lease - 3 Copies

Santa Fe, New Mexico 87505

DISTRICT III

1000 RIO BRAZOS RD., AZTEC, NM 87410

DISTRICT IV

11885 S. ST. FRANCIS DR., SANTA FE, NM 87505

WELL LOCATION AND ACREAGE DEDICATION PLAT

☐ AMENDED REPORT

API Number	Pool Code	Pool Name
	97892	Wildcat G-06 S263407P; Bone Spring
Property Code	Property Name	Well Number
38865	GUNNER 8 FEDERAL	5H
OGRID No.	Operator Name	Elevation
229137	COG OPERATING, LLC	3342.4'

Surface Location

UL or lot No.	Section	Township	Range	Lot Idn	Feet from the	North/South line	Feet from the	East/West line	County
0	8	26-S	34-E		190	SOUTH	1520	EAST	LEA

Bottom Hole Location If Different From Surface

UL or lot No.	Section	Township	Range	Lot Idn	Feet from the	North/South line	Feet from the	East/West line	County
G	5	26-S	34-E		1650	NORTH	1520	EAST	LEA

Dedicated Acres	Joint or Infill	Consolidation Code	Order No.
280			

NO ALLOWABLE WILL BE ASSIGNED TO THIS COMPLETION UNTIL ALL INTERESTS HAVE BEEN CONSOLIDATED
OR A NON-STANDARD UNIT HAS BEEN APPROVED BY THE DIVISION

NAD 27 PROPOSED BOTTOM HOLE LOCATION
Y=392062.4 N
X=761889.7 E
LAT.=32.075074° N
LONG.=103.487837° W

NAD 27 SURFACE LOCATION
Y=383339.1 N
X=761964.6 E
LAT.=32.051094° N
LONG.=103.487816° W

1/16 CORNER
Y=392393.7 N
X=762085.1 E

1/16 CORNER
Y=391075.2 N
X=762097.5 E

1/16 CORNER
Y=384472.3 N
X=762154.1 E

1/16 CORNER
Y=383150.3 N
X=762164.8 E

GRID AZ - 359°30'20"
HORIZ DIST - 8721.60

Estimate completed interval 342' S.L. 1521' FEE

OPERATOR CERTIFICATION

I hereby certify that the information herein is true and complete to the best of my knowledge and belief, and that this organization either owns a working interest or unleased mineral interest in the land including the proposed bottom hole location or has a right to drill this well at this location pursuant to a contract with an owner of such mineral or working interest, or to a voluntary pooling agreement or a compulsory pooling order heretofore entered by the Division.

B. Maiorino 6/10/13
Signature Date

Brian Maiorino
Printed Name

SURVEYOR CERTIFICATION

I hereby certify that the well location shown on this plat was plotted from field notes of actual surveys made by me or under my supervision, and that the same is true and correct to the best of my belief.

NOVEMBER 19, 2012
Date Surveyed

Signature & Seal of Professional Surveyor

Chad Hargrow 11/2/13
Professional Surveyor

Certificate No. CHAD HARGROW 17777
W.O. # 12-217 2012-037

DISTRICT I
1625 N. FRENCH DR., MOORE, NM 88440

State of New Mexico
Energy, Minerals and Natural Resources Department

Form C-102

DISTRICT II
1301 W. GRAND AVENUE, ARTESIA, NM 88210

OIL CONSERVATION DIVISION

Revised October 12, 2010

Submit to Appropriate District Office

State Lease - 4 Copies

Fee Lease - 3 Copies

DISTRICT III
1000 RIO BRAZOS RD., AZTEC, NM 87410

11885 SOUTH ST. FRANCIS DR.
Santa Fe, New Mexico 87505

DISTRICT IV
11885 S. ST. FRANCIS DR., SANTA FE, NM 87505

WELL LOCATION AND ACREAGE DEDICATION PLAT

☐ AMENDED REPORT

API Number	Pool Code	Pool Name
	97892	Wildcat G-06 S263407P; Bone Spring
Property Code	Property Name	Well Number
38865	GUNNER 8 FEDERAL	6H
OGRD No.	Operator Name	Elevation
229137	COG OPERATING, LLC	3351.3'

Surface Location

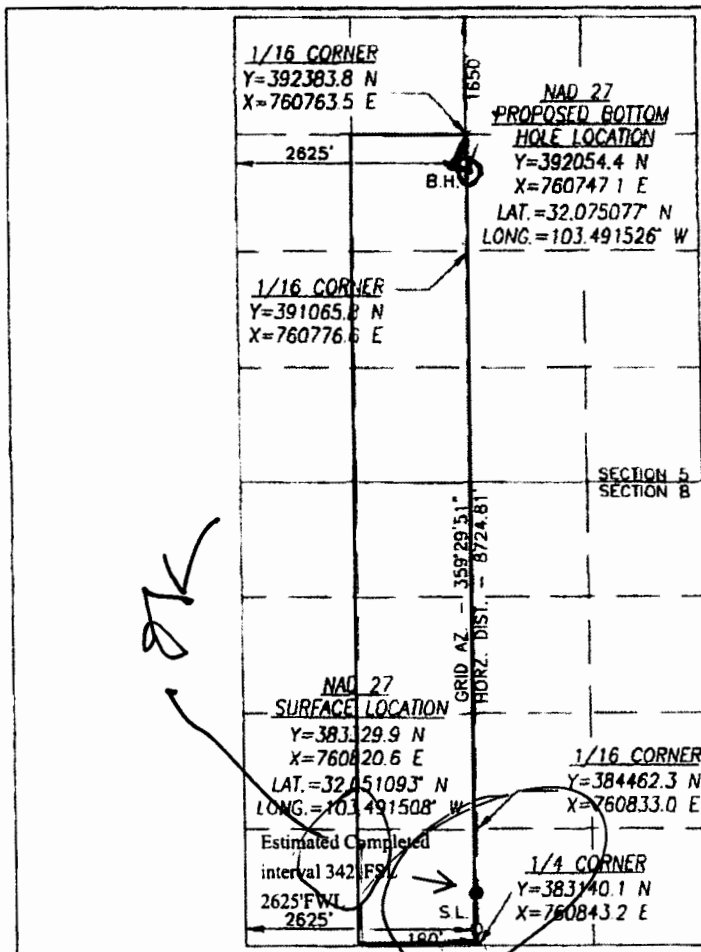
UL or lot No.	Section	Township	Range	Lot Idn	Feet from the	North/South line	Feet from the	East/West line	County
N	8	26-S	34-E		190	SOUTH	2625	WEST	LEA

Bottom Hole Location If Different From Surface

UL or lot No.	Section	Township	Range	Lot Idn	Feet from the	North/South line	Feet from the	East/West line	County
F	5	26-S	34-E		1650	NORTH	2625	WEST	LEA

Dedicated Acres	Joint or Infill	Consolidation Code	Order No
280			

NO ALLOWABLE WILL BE ASSIGNED TO THIS COMPLETION UNTIL ALL INTERESTS HAVE BEEN CONSOLIDATED
OR A NON-STANDARD UNIT HAS BEEN APPROVED BY THE DIVISION



OPERATOR CERTIFICATION

I hereby certify that the information herein is true and complete to the best of my knowledge and belief, and that this organization either owns a working interest or unleased mineral interest in the land including the proposed bottom hole location or has a right to drill this well at this location pursuant to a contract with an owner of such mineral or working interest, or to a voluntary pooling agreement or a compulsory pooling order heretofore entered by the division.

Signature: Brian Maionino Date: 6/10/13

Printed Name: Brian Maionino

SURVEYOR CERTIFICATION

I hereby certify that the well location shown on this plat was plotted from field notes of actual surveys made by me or under my supervision, and that the same is true and correct to the best of my belief.

NOVEMBER 19, 2012

Date Surveyed
Signature & Seal of Professional Surveyor



Certificate No. CHAD HARGROW 17777
W.O. # 12-218 2012-037