

District I  
1625 N. French Dr., Hobbs, NM 88240  
Phone: (575) 393-6161 Fax: (575) 393-0720  
District II  
811 S. First St., Artesia, NM 88210  
Phone: (575) 748-1283 Fax: (575) 748-9720  
District III  
1000 Rio Brazos Road, Aztec, NM 87410  
Phone: (505) 334-6178 Fax: (505) 334-6170  
District IV  
1220 S. St. Francis Dr., Santa Fe, NM 87505  
Phone: (505) 476-3460 Fax: (505) 476-3462

State of New Mexico  
Energy, Minerals & Natural Resources Department  
OIL CONSERVATION DIVISION  
1220 South St. Francis Dr.  
Santa Fe, NM 87505

Form C-102  
Revised August 1, 2011  
Submit one copy to appropriate  
District Office

☐ AMENDED REPORT

WELL LOCATION AND ACREAGE DEDICATION PLAT

<sup>1</sup> API Number	<sup>2</sup> Pool Code	<sup>3</sup> Pool Name
<sup>4</sup> Property Code	<sup>5</sup> Property Name <b>SIDEWINDER FEDERAL COM</b>	
<sup>7</sup> OGRID No. <b>229137</b>	<sup>8</sup> Operator Name <b>COG OPERATING, LLC.</b>	<sup>6</sup> Well Number <b>4H</b>
		<sup>9</sup> Elevation <b>2885.5</b>

<sup>10</sup> Surface Location

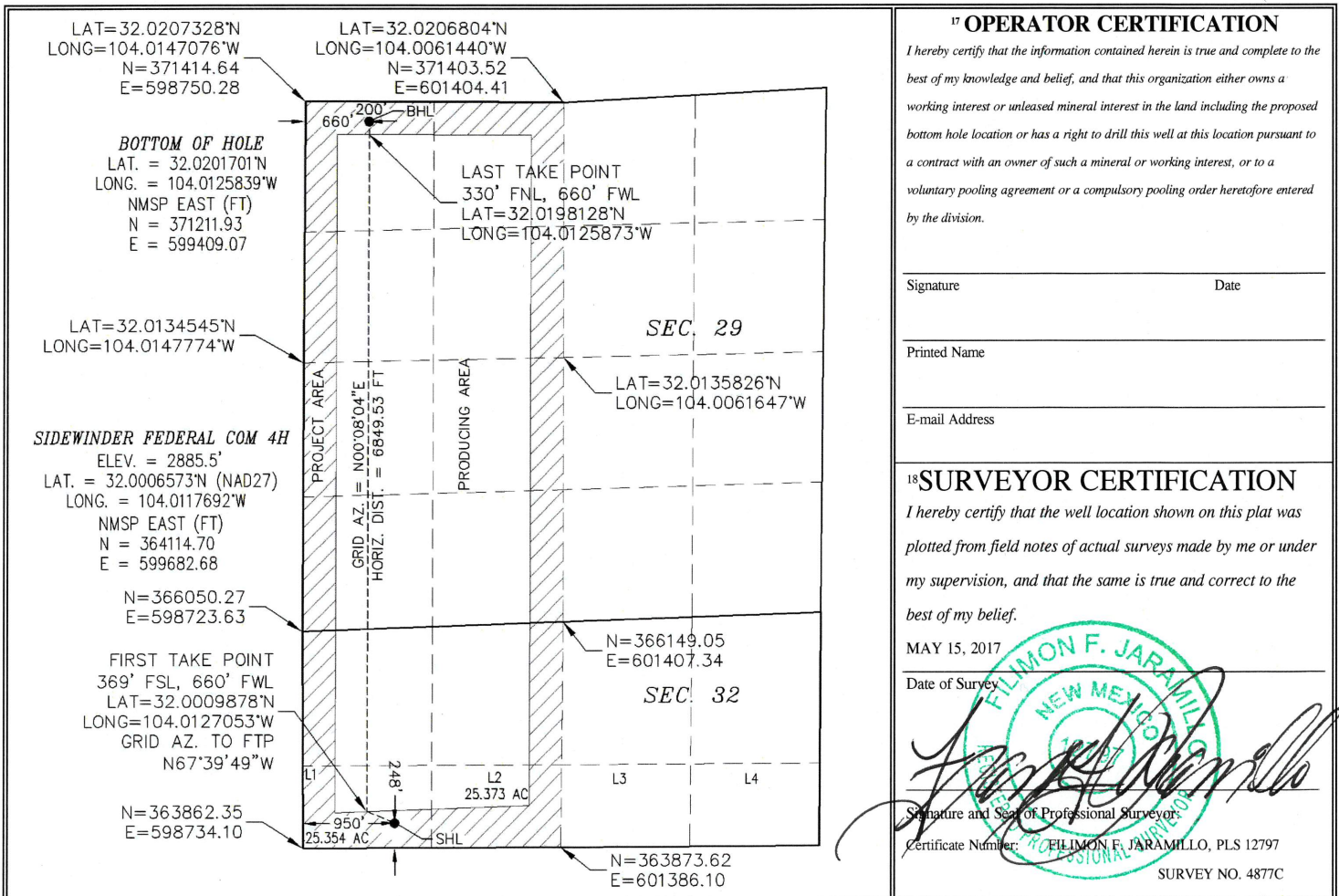
UL or lot no.	Section	Township	Range	Lot Idn	Feet from the	North/South line	Feet from the	East/West line	County
<b>1</b>	<b>32</b>	<b>26 S</b>	<b>29 E</b>		<b>248</b>	<b>SOUTH</b>	<b>950</b>	<b>WEST</b>	<b>EDDY</b>

<sup>11</sup> Bottom Hole Location If Different From Surface

UL or lot no.	Section	Township	Range	Lot Idn	Feet from the	North/South line	Feet from the	East/West line	County
<b>D</b>	<b>29</b>	<b>26 S</b>	<b>29 E</b>		<b>200</b>	<b>NORTH</b>	<b>660</b>	<b>WEST</b>	<b>EDDY</b>

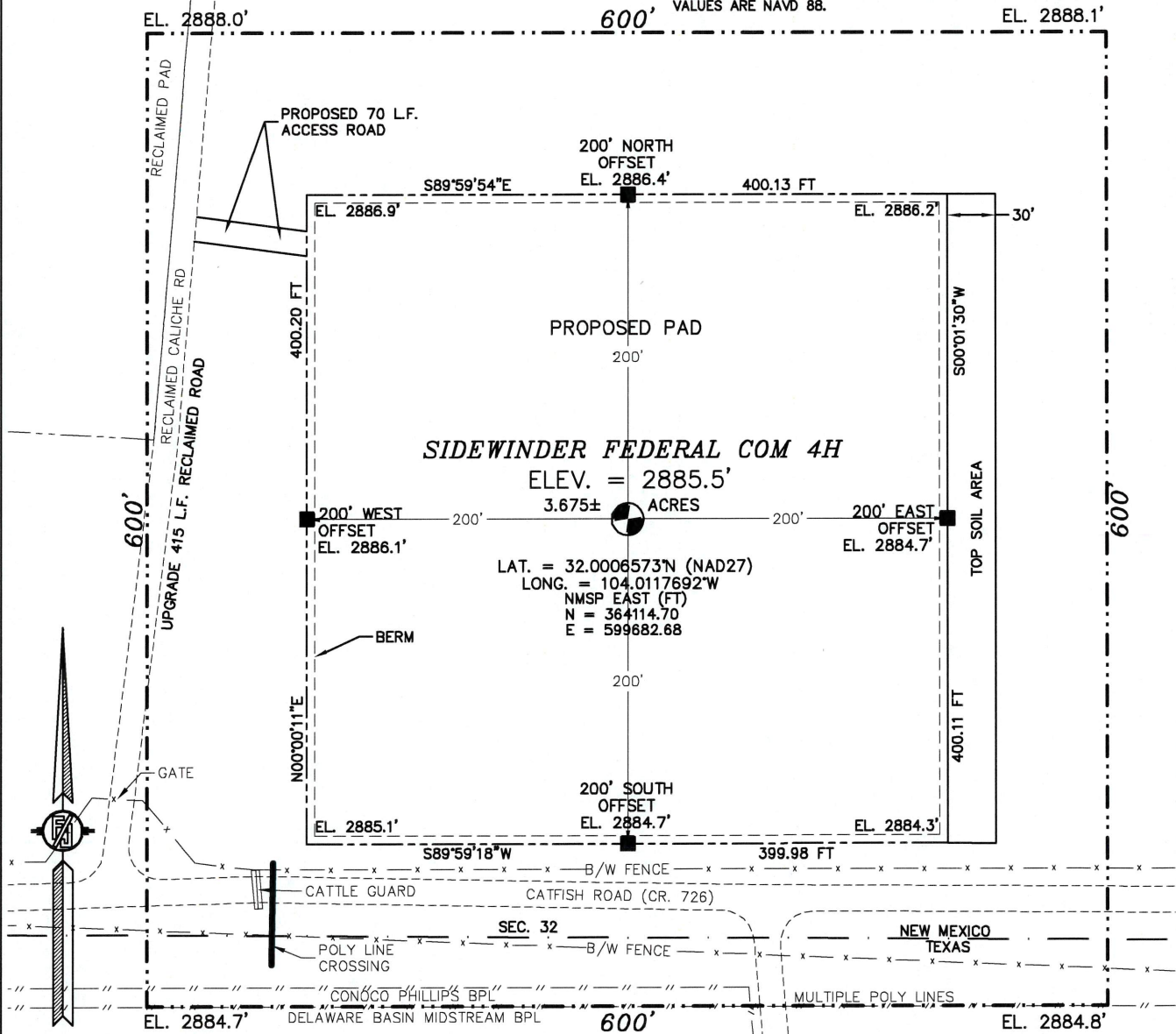
<sup>12</sup> Dedicated Acres	<sup>13</sup> Joint or Infill	<sup>14</sup> Consolidation Code	<sup>15</sup> Order No.

No allowable will be assigned to this completion until all interests have been consolidated or a non-standard unit has been approved by the division.



# SITE MAP

NOTE: LATITUDE AND LONGITUDE COORDINATES ARE SHOWN USING THE NORTH AMERICAN DATUM OF 1927 (NAD27). LISTED NEW MEXICO STATE PLANE EAST COORDINATES ARE GRID (NAD27). BASIS OF BEARING AND DISTANCES USED ARE NEW MEXICO STATE PLANE EAST (NAD83) COORDINATES MODIFIED TO THE SURFACE. ELEVATION VALUES ARE NAVD 88.



0 10 50 100 200

SCALE 1" = 100'

## DIRECTIONS TO LOCATION

FROM THE INTERSECTION OF HWY 285 (PECOS HWY) AND CR. 726 (CATFISH ROAD), JUST ON THE NORTH SIDE OF THE NEW MEXICO/TEXAS BORDER, GO EAST ON CR. 726 APPROX. 1.1 MILE TO A RECLAIMED ROAD ON LEFT (NORTH), TURN LEFT GO NORTH 475' TO A ROAD SURVEY ON RIGHT (EAST), GO EAST 70' TO THE NORTHWEST PAD CORNER.

I, FILMON F. JARAMILLO, A NEW MEXICO REGISTERED PROFESSIONAL SURVEYOR CERTIFY THAT I DIRECTED AND AM RESPONSIBLE FOR THIS SURVEY, THAT THIS SURVEY IS TRUE AND CORRECT TO THE BEST OF MY KNOWLEDGE AND BELIEF, AND THIS SURVEY AND PLAT MEET THE MINIMUM STANDARDS FOR SURVEYING IN NEW MEXICO.

COG OPERATING, LLC  
**SIDEWINDER FEDERAL COM 4H**  
 LOCATED 248 FT. FROM THE SOUTH LINE  
 AND 950 FT. FROM THE WEST LINE OF  
 SECTION 32, TOWNSHIP 26 SOUTH,  
 RANGE 29 EAST, N.M.P.M.  
 EDDY COUNTY, STATE OF NEW MEXICO

MAY 15, 2017

SURVEY NO. 4877C

FILMON F. JARAMILLO, P.E.S. 12797

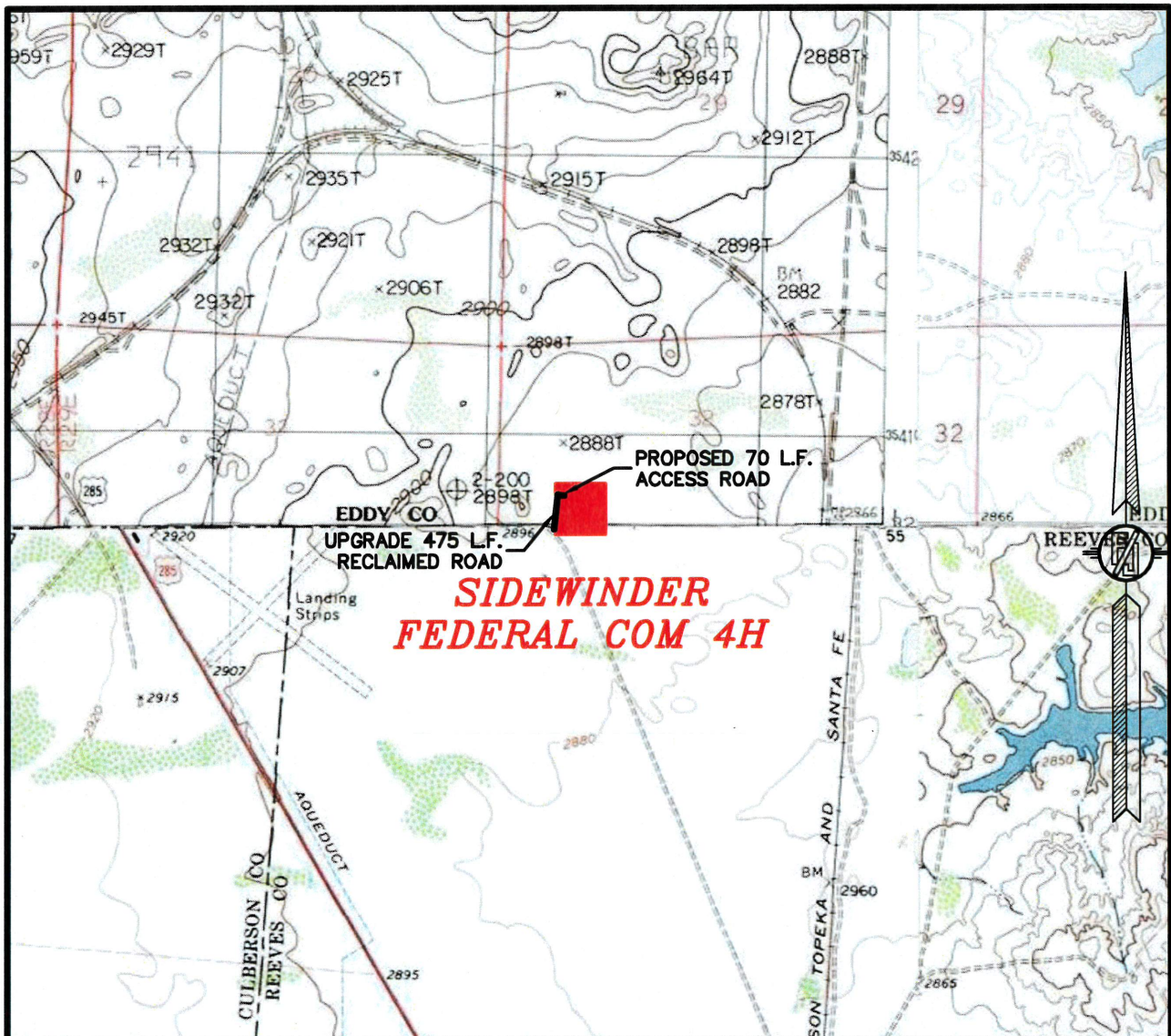
WADRON SURVEYING, INC.

301 SOUTH CANAL  
 (575) 234-3341

CARLSBAD, NEW MEXICO



SECTION 32, TOWNSHIP 26 SOUTH, RANGE 29 EAST, N.M.P.M.  
EDDY COUNTY, STATE OF NEW MEXICO  
LOCATION VERIFICATION MAP



USGS QUAD MAP:  
RED BLUFF

NOT TO SCALE

COG OPERATING, LLC  
**SIDEWINDER FEDERAL COM 4H**  
LOCATED 248 FT. FROM THE SOUTH LINE  
AND 950 FT. FROM THE WEST LINE OF  
SECTION 32, TOWNSHIP 26 SOUTH,  
RANGE 29 EAST, N.M.P.M.  
EDDY COUNTY, STATE OF NEW MEXICO

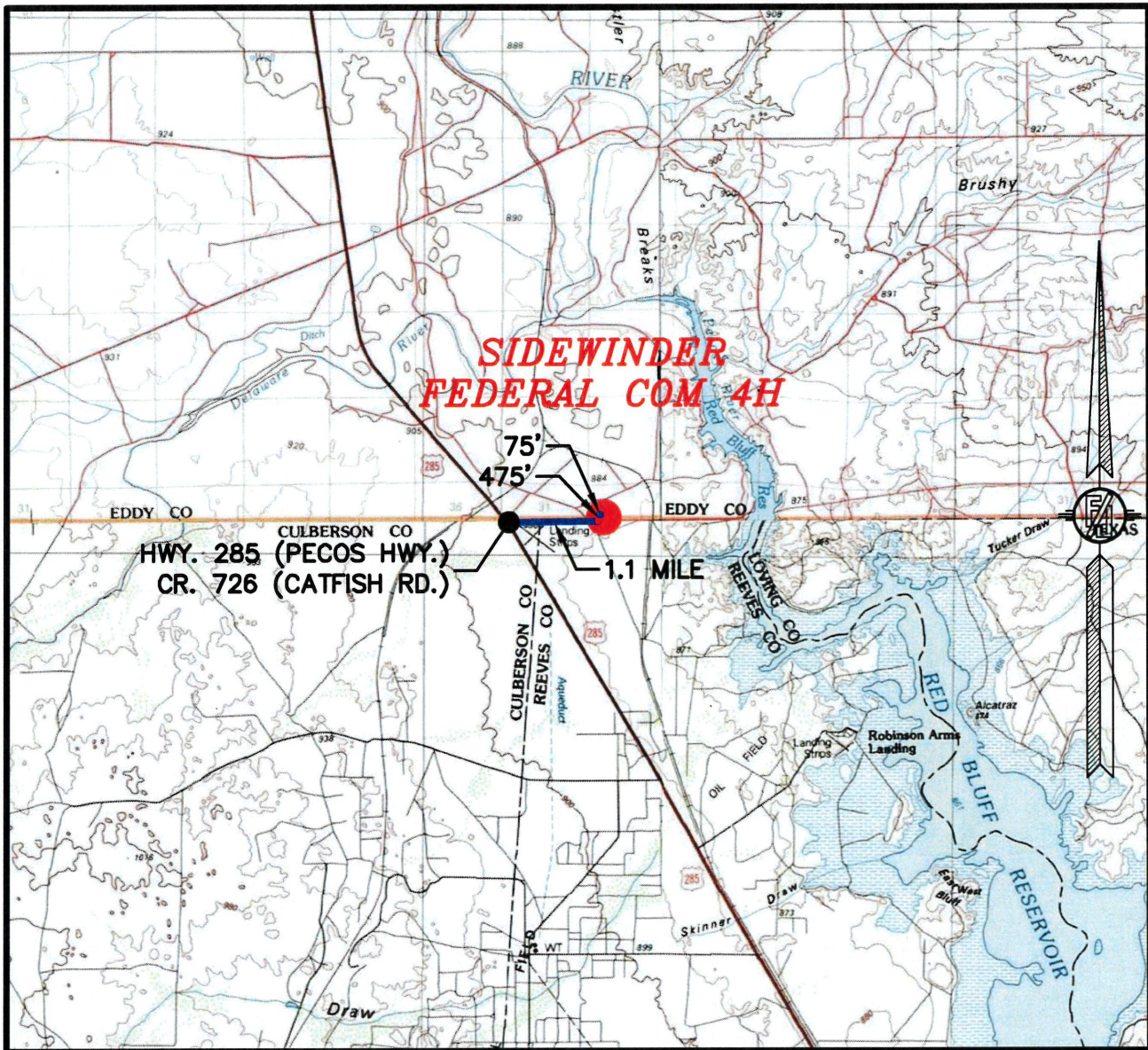
MAY 15, 2017

SURVEY NO. 4877C

MADRON SURVEYING, INC. 301 SOUTH CANAL (575) 234-3341 CARLSBAD, NEW MEXICO



SECTION 32, TOWNSHIP 26 SOUTH, RANGE 29 EAST, N.M.P.M.  
EDDY COUNTY, STATE OF NEW MEXICO  
VICINITY MAP



DISTANCES IN MILES

NOT TO SCALE

DIRECTIONS TO LOCATION

FROM THE INTERSECTION OF HWY 285 (PECOS HWY) AND CR. 726 (CATFISH ROAD), JUST ON THE NORTH SIDE OF THE NEW MEXICO/TEXAS BORDER, GO EAST ON CR. 726 APPROX. 1.1 MILE TO A RECLAIMED ROAD ON LEFT (NORTH), TURN LEFT GO NORTH 475' TO A ROAD SURVEY ON RIGHT (EAST), GO EAST 70' TO THE NORTHWEST PAD CORNER.

COG OPERATING, LLC  
**SIDEWINDER FEDERAL COM 4H**  
LOCATED 248 FT. FROM THE SOUTH LINE  
AND 950 FT. FROM THE WEST LINE OF  
SECTION 32, TOWNSHIP 26 SOUTH,  
RANGE 29 EAST, N.M.P.M.  
EDDY COUNTY, STATE OF NEW MEXICO

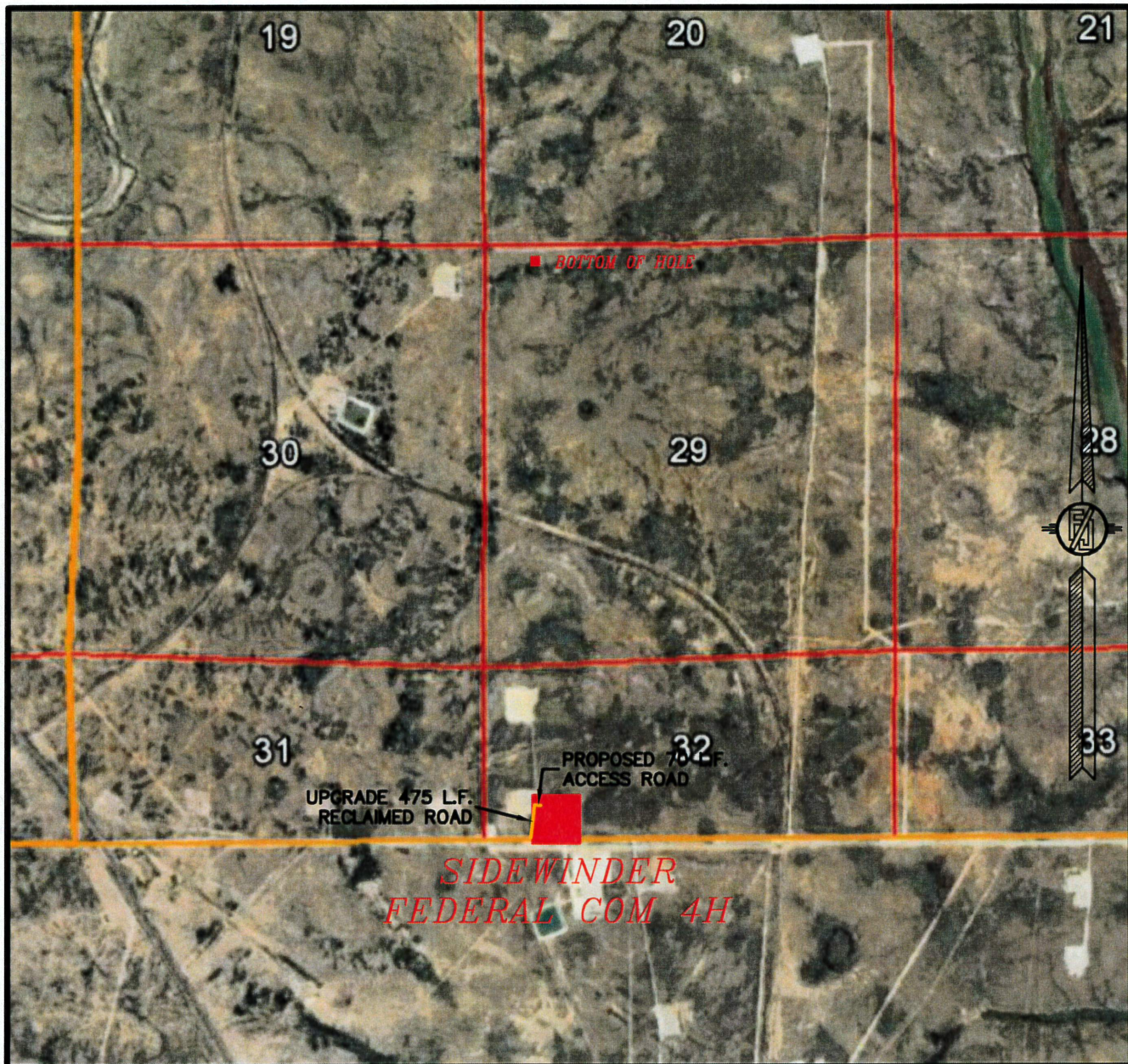
MAY 15, 2017

MADRON SURVEYING, INC. 301 SOUTH CANAL  
(575) 234-3341

SURVEY NO. 4877C  
CARLSBAD, NEW MEXICO



SECTION 32, TOWNSHIP 26 SOUTH, RANGE 29 EAST, N.M.P.M.  
EDDY COUNTY, STATE OF NEW MEXICO  
AERIAL PHOTO



NOT TO SCALE  
AERIAL PHOTO:  
GOOGLE EARTH  
NOV. 2015

COG OPERATING, LLC  
**SIDEWINDER FEDERAL COM 4H**  
LOCATED 248 FT. FROM THE SOUTH LINE  
AND 950 FT. FROM THE WEST LINE OF  
SECTION 32, TOWNSHIP 26 SOUTH,  
RANGE 29 EAST, N.M.P.M.  
EDDY COUNTY, STATE OF NEW MEXICO

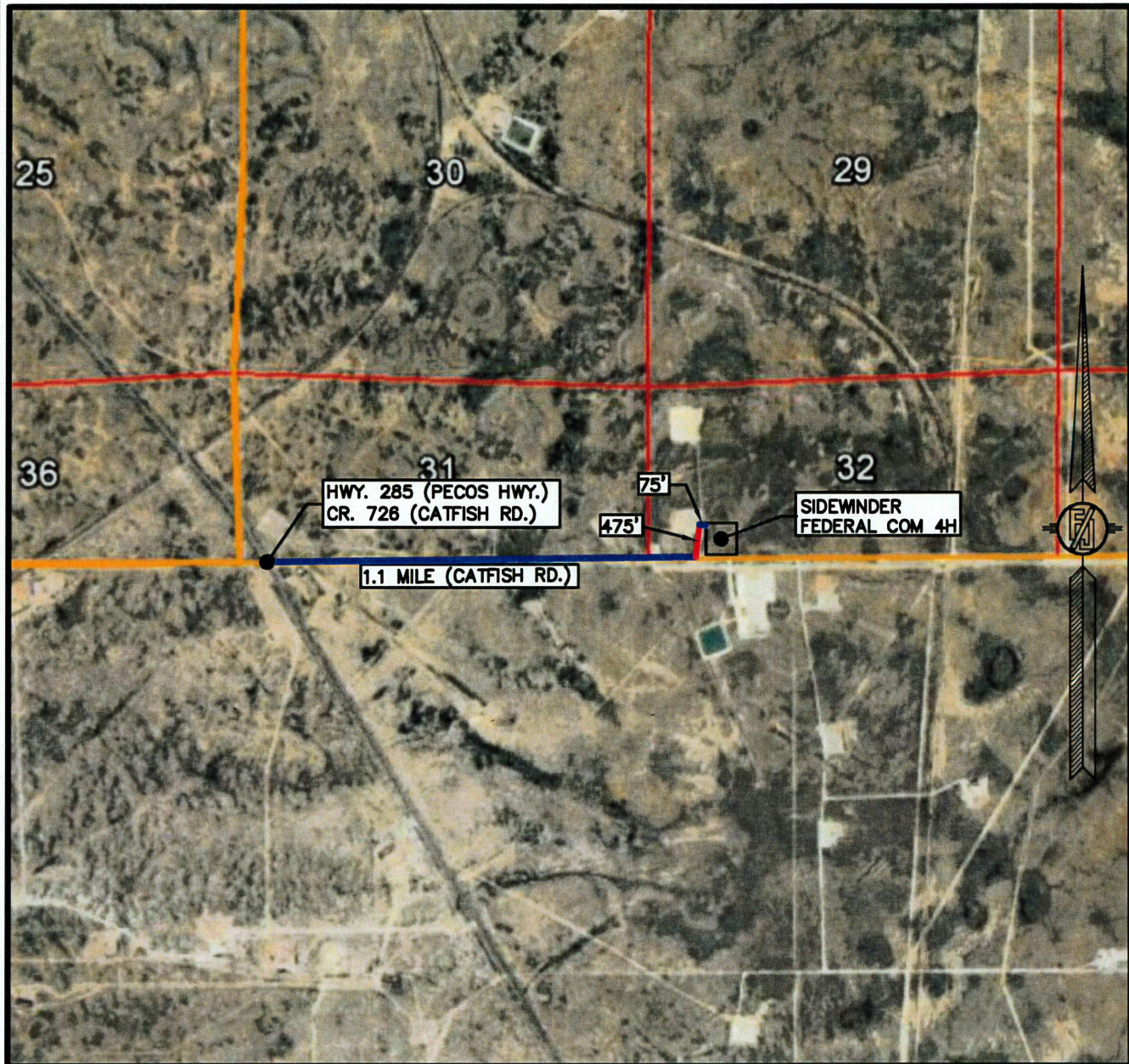
MAY 15, 2017

SURVEY NO. 4877C

MADRON SURVEYING, INC. 301 SOUTH CANAL (575) 234-3341 CARLSBAD, NEW MEXICO



SECTION 32, TOWNSHIP 26 SOUTH, RANGE 29 EAST, N.M.P.M.  
EDDY COUNTY, STATE OF NEW MEXICO  
AERIAL ACCESS ROUTE MAP



NOT TO SCALE  
AERIAL PHOTO:  
GOOGLE EARTH  
NOV. 2015

COG OPERATING, LLC  
**SIDEWINDER FEDERAL COM 4H**  
LOCATED 248 FT. FROM THE SOUTH LINE  
AND 950 FT. FROM THE WEST LINE OF  
SECTION 32, TOWNSHIP 26 SOUTH,  
RANGE 29 EAST, N.M.P.M.  
EDDY COUNTY, STATE OF NEW MEXICO

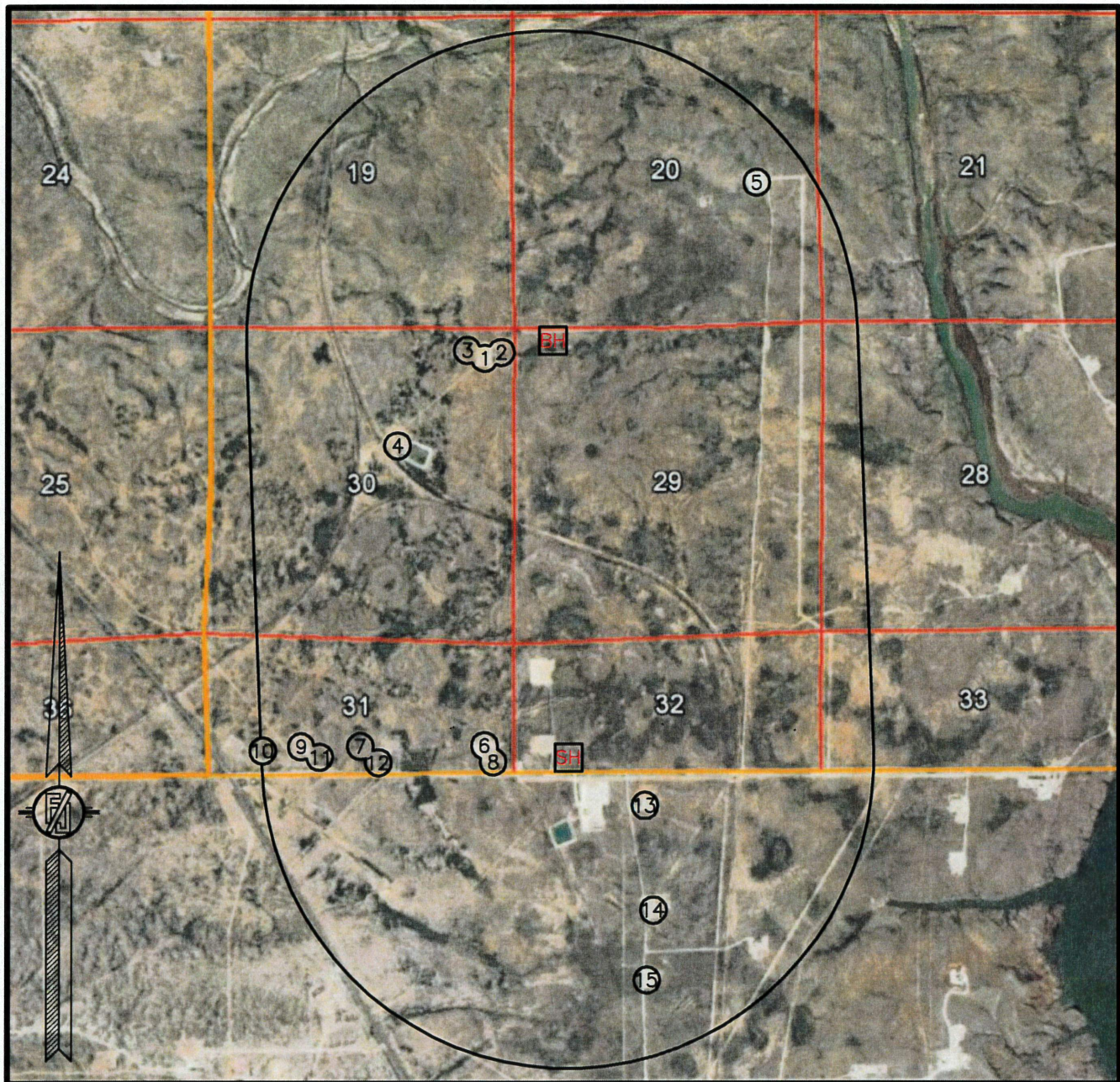
MAY 15, 2017

SURVEY NO. 4877C

MADRON SURVEYING, INC. 301 SOUTH CANAL (575) 234-3341 CARLSBAD, NEW MEXICO



# 1-MILE MAP



NOT TO SCALE  
AERIAL PHOTO:  
GOOGLE EARTH  
NOV. 2015

- SH SURFACE LOCATION
- BH BOTTOM OF HOLE
- ⊗ WELLS WITHIN 1 MILE

COG OPERATING, LLC  
**SIDEWINDER FEDERAL COM 4H**  
LOCATED 248 FT. FROM THE SOUTH LINE  
AND 950 FT. FROM THE WEST LINE OF  
SECTION 32, TOWNSHIP 26 SOUTH,  
RANGE 29 EAST, N.M.P.M.  
EDDY COUNTY, STATE OF NEW MEXICO

MAY 15, 2017

MADRON SURVEYING, INC. 301 SOUTH CANAL CARLSBAD, NEW MEXICO  
(575) 234-3341 SURVEY NO. 4877C