

**BEFORE THE OIL CONSERVATION DIVISION  
EXAMINER HEARING APRIL 5, 2018**

**CASE NO. 16058 & 16059**

*CORRAL FLY "35-26" FED COM 21H WELL  
CORRAL FLY "35-26" FED COM 22H WELL  
CORRAL FLY "35-26" FED COM 23H WELL*

**EDDY COUNTY, NEW MEXICO**



District I  
1603 N. Plumb Dr., Hobbs, NM 88240  
Phone: (505) 343-4141 Fax: (505) 343-4730  
District II  
411 S. First St., Arroyo, NM 88214  
Phone: (505) 346-1281 Fax: (505) 346-9730  
District III  
1000 Elm Street Road, Aztec, NM 87410  
Phone: (505) 334-4178 Fax: (505) 334-4170  
District IV  
1250 E. St. Plumb Dr., Santa Fe, NM 87501  
Phone: (505) 476-3480 Fax: (505) 476-3482

State of New Mexico  
Energy, Minerals & Natural Resources Department  
**OIL CONSERVATION DIVISION**  
1220 South St. Francis Dr.  
Santa Fe, NM 87505

Form C-102  
Revised August 1, 2011  
Submit one copy to appropriate  
District Office

AMENDED REPORT

**WELL LOCATION AND ACREAGE DEDICATION PLAT**

API Number	Pool Code	Pool Name
Property Code	Property Name <b>CORRAL FLY "35-28" FEDERAL COM</b>	Well Number <b>21H</b>
OGRID No.	Operator Name <b>OXY USA INC.</b>	Elevation <b>3016.0'</b>

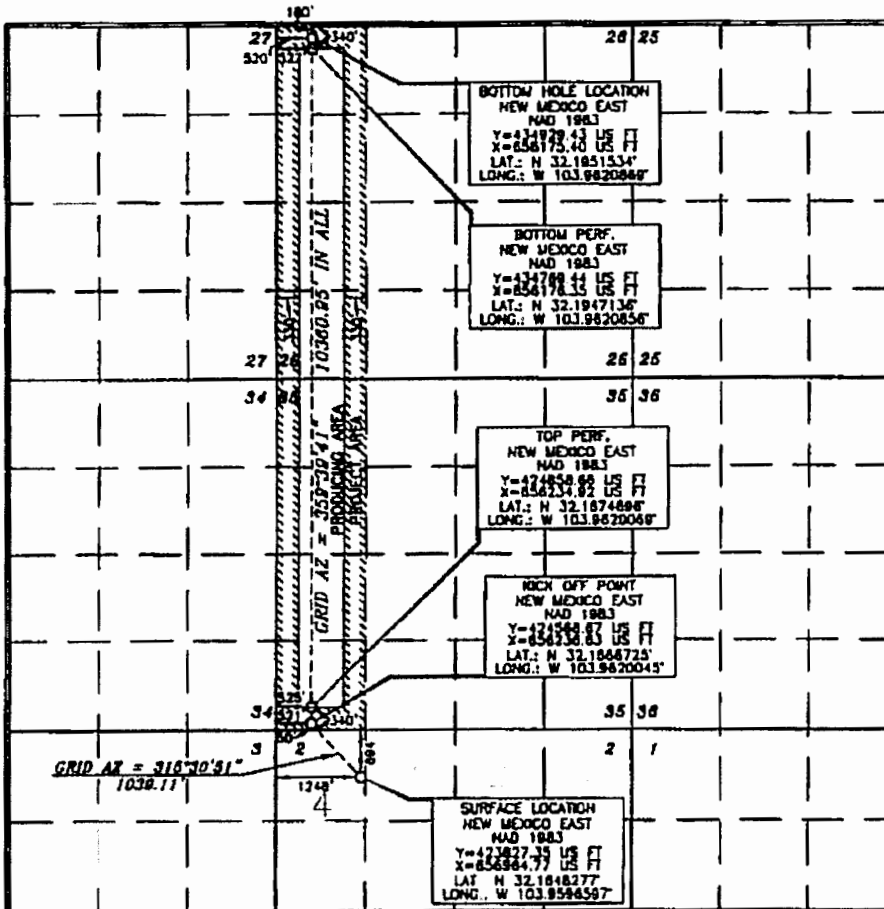
**Surface Location**

UL or lot no.	Section	Township	Range	Lot Idn	Feet from the	North/South line	Feet from the	East/West line	County
4	2	25 SOUTH	29 EAST, N.M.P.M.		694'	NORTH	1248'	WEST	EDDY

**Bottom Hole Location If Different From Surface**

UL or lot no.	Section	Township	Range	Lot Idn	Feet from the	North/South line	Feet from the	East/West line	County
D	26	24 SOUTH	29 EAST, N.M.P.M.		180'	NORTH	520'	WEST	EDDY
Dedicated Acres	Joint or Infill	Consolidation Code	Order No.						

No allowable will be assigned to this completion until all interests have been consolidated or a non-standard unit has been approved by the division.



**OPERATOR CERTIFICATION**

I hereby certify that the information contained herein is true and complete to the best of my knowledge and belief, and that this organization either owns a working interest or retained mineral interest in the land including the proposed bottom hole location or has a right to drill this well at this location pursuant to a contract with an owner of such a mineral or working interest, or to a voluntary pooling agreement or a compulsory pooling order heretofore entered by the division.

Signature \_\_\_\_\_ Date \_\_\_\_\_  
Printed Name \_\_\_\_\_  
E-mail Address \_\_\_\_\_

**SURVEYOR CERTIFICATION**

I hereby certify that the information on this plat was prepared by me or under my direct supervision and that the same is a true and correct copy of the original survey.

Date of Survey: **MAY 16, 2017**

Signature and Seal of Professional Surveyor: *Terry J. As...*  
Certificate Number: **15079**

WD# 160524WL-a (Rev. E) (NM)

BEFORE THE OIL CONSERVATION DIVISION  
Santa Fe, New Mexico  
Exhibit No. 1  
Submitted by: OXY USA INC  
Hearing Date: April 5, 2018  
Case Nos. 16058 & 16059

District I  
1423 N. French Dr., Hobbs, NM 88240  
Phone: (575) 393-4141 Fax: (575) 393-0720  
District II  
411 S. First St., Aramis, NM 88218  
Phone: (575) 748-1283 Fax: (575) 748-9720  
District III  
1000 Rio Blanco Road, Aramis, NM 87410  
Phone: (505) 334-6178 Fax: (505) 334-6170  
District IV  
1226 S. St. Francis Dr., Santa Fe, NM 87505  
Phone: (505) 476-3400 Fax: (505) 476-3402

State of New Mexico  
Energy, Minerals & Natural Resources Department  
**OIL CONSERVATION DIVISION**  
1220 South St. Francis Dr.  
Santa Fe, NM 87505

Form C-102  
Revised August 1, 2011  
Submit one copy to appropriate  
District Office

AMENDED REPORT

**WELL LOCATION AND ACREAGE DEDICATION PLAT**

API Number	Pool Code	Pool Name
Property Code	Property Name <b>CORRAL FLY "35-26" FEDERAL COM</b>	
OGRID No.	Operator Name <b>OXY USA INC.</b>	Well Number <b>22H</b>
		Elevation <b>3018.2'</b>

**Surface Location**

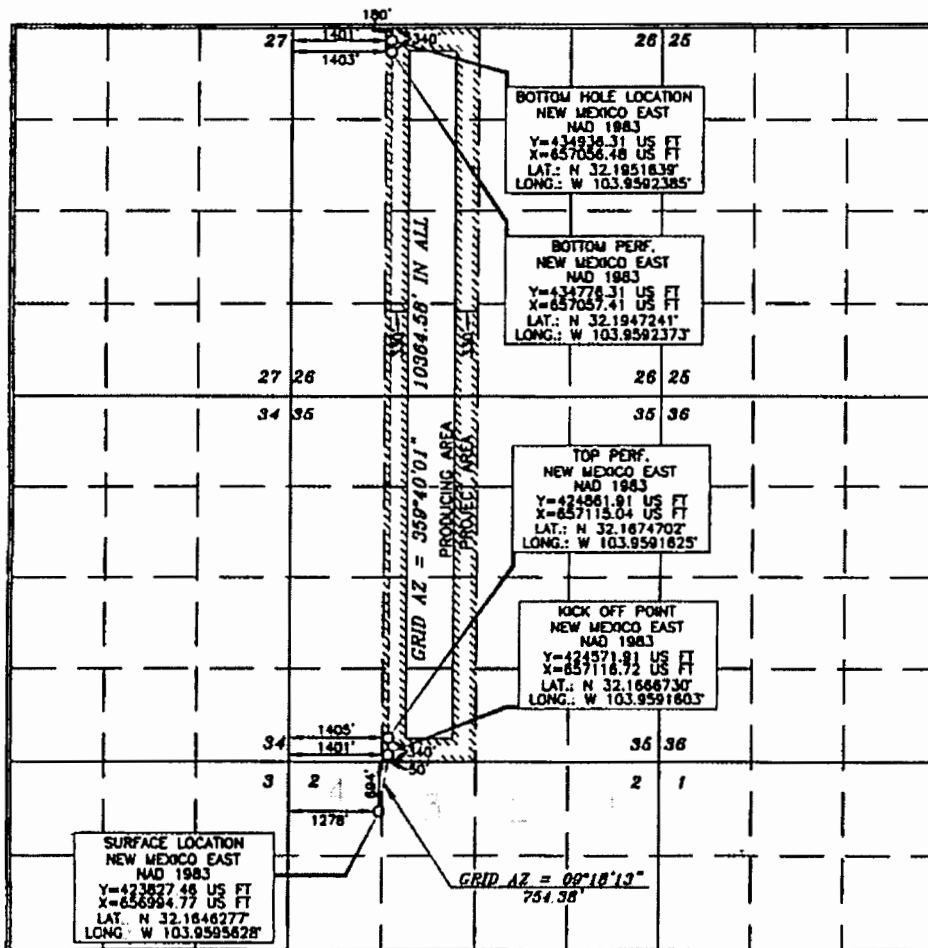
UL or lot no.	Section	Township	Range	Lot Idn	Feet from the	North/South line	Feet from the	East/West line	County
4	2	25 SOUTH	29 EAST, N.M.P.M.		694'	NORTH	1278'	WEST	EDDY

**Bottom Hole Location If Different From Surface**

UL or lot no.	Section	Township	Range	Lot Idn	Feet from the	North/South line	Feet from the	East/West line	County
C	26	24 SOUTH	29 EAST, N.M.P.M.		180'	NORTH	1401'	WEST	EDDY

Dedicated Acres	Joint or Infill	Consolidation Code	Order No.
-----------------	-----------------	--------------------	-----------

No allowable will be assigned to this completion until all interests have been consolidated or a non-standard unit has been approved by the division.



**OPERATOR CERTIFICATION**

I hereby certify that the information contained herein is true and complete to the best of my knowledge and belief, and that this organization either owns a working interest or unleased mineral interest in the land including the proposed bottom hole location or has a right to drill this well at this location pursuant to a contract with an owner of such a mineral or working interest, or to a voluntary pooling agreement or a compulsory pooling order heretofore entered by the division.

Signature \_\_\_\_\_ Date \_\_\_\_\_

Printed Name \_\_\_\_\_

E-mail Address \_\_\_\_\_

**SURVEYOR CERTIFICATION**

I hereby certify that the plat and data shown on this plat were obtained by actual survey or actual surveyor made by me or under my supervision, and that the same is true and correct to the best of my belief.

Date of Survey \_\_\_\_\_

Signature and Seal of Professional Surveyor \_\_\_\_\_

*Tommy J. Ass...*  
Certificate Number 15079

District I  
1425 N. French Dr., Hobbs, NM 88240  
Phone: (575) 793-6161 Fax: (575) 793-0720  
District II  
611 S. First St., Aramis, NM 88210  
Phone: (575) 746-1283 Fax: (575) 746-9720  
District III  
1020 Elm Branch Road, Aztec, NM 87410  
Phone: (505) 334-6178 Fax: (505) 334-6170  
District IV  
1220 S. St. Francis Dr., Santa Fe, NM 87505  
Phone: (505) 476-3460 Fax: (505) 476-3462

State of New Mexico  
Energy, Minerals & Natural Resources Department  
**OIL CONSERVATION DIVISION**  
1220 South St. Francis Dr.  
Santa Fe, NM 87505

Form C-102  
Revised August 1, 2011  
Submit one copy to appropriate  
District Office

AMENDED REPORT

**WELL LOCATION AND ACREAGE DEDICATION PLAT**

API Number	Pool Code	Pool Name
Property Code	Property Name <b>CORRAL FLY "35-26" FEDERAL COM</b>	Well Number <b>23H</b>
OGRID No.	Operator Name <b>OXY USA INC.</b>	Elevation <b>3018.5'</b>

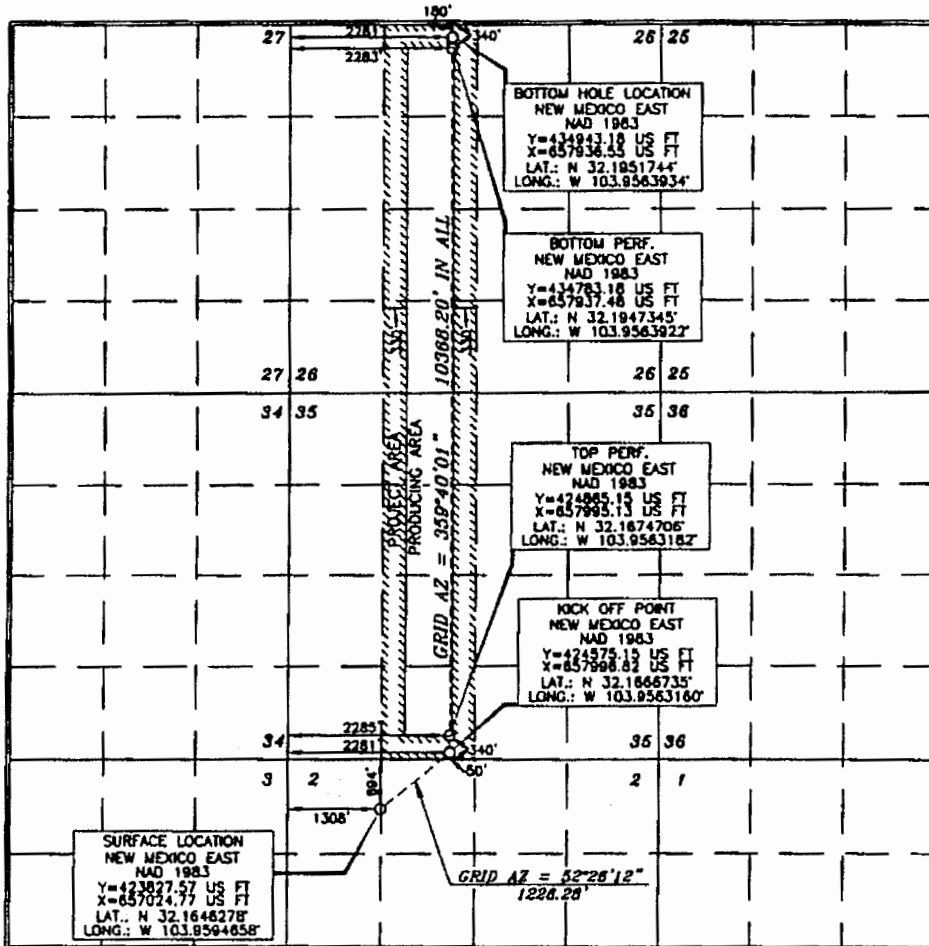
**Surface Location**

UL or lot no.	Section	Township	Range	Lot lds	Feet from the	North/South line	Feet from the	East/West line	County
4	2	25 SOUTH	29 EAST, N.M.P.M.		694'	NORTH	1308'	WEST	EDDY

**Bottom Hole Location If Different From Surface**

UL or lot no.	Section	Township	Range	Lot lds	Feet from the	North/South line	Feet from the	East/West line	County
C	26	24 SOUTH	29 EAST, N.M.P.M.		180'	NORTH	2281'	WEST	EDDY
Dedicated Acres	Joint or Infill	Consolidation Code	Order No.						

No allowable will be assigned to this completion until all interests have been consolidated or a non-standard unit has been approved by the division.



**OPERATOR CERTIFICATION**

I hereby certify that the information contained herein is true and complete to the best of my knowledge and belief, and that this organization either owns a working interest or undivided mineral interest in the land including the proposed bottom hole location or has a right to drill this well at this location pursuant to a contract with an owner of such a mineral or working interest, or to a voluntary pooling agreement or a compulsory pooling order heretofore entered by the division.

Signature \_\_\_\_\_ Date \_\_\_\_\_  
Printed Name \_\_\_\_\_  
E-mail Address \_\_\_\_\_

**SURVEYOR CERTIFICATION**

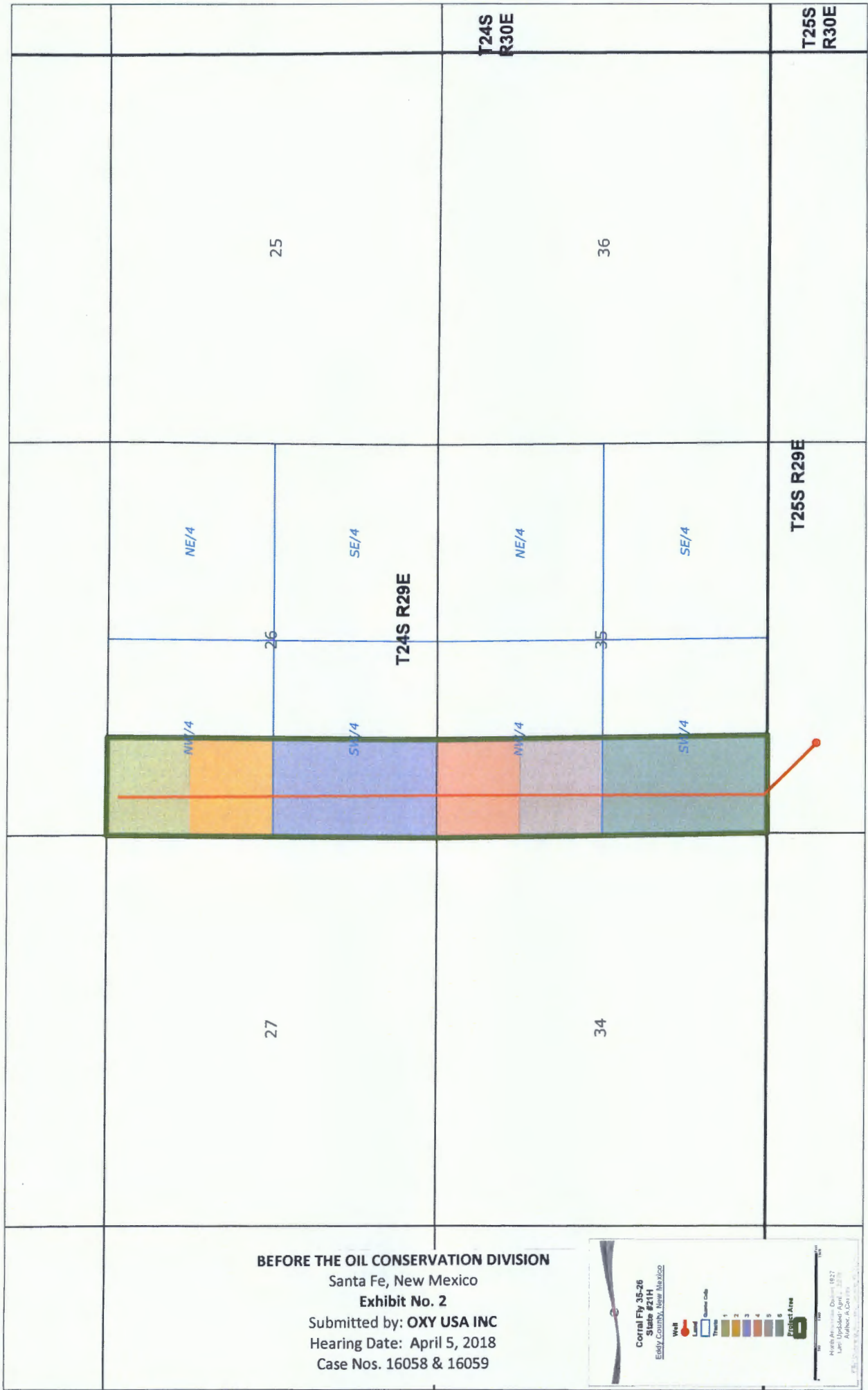
I hereby certify that the information shown on this plat was obtained from reliable sources of accurate surveys made by myself or under my supervision, and that the same is true and correct to the best of my belief.

DATE OF SURVEY: MAY 15, 2017

Signature and Title: *ERRY J. ASS...*  
Professional Surveyor

Certificate Number: 15079

WO# 160524WL-c (Rev. C) (M)

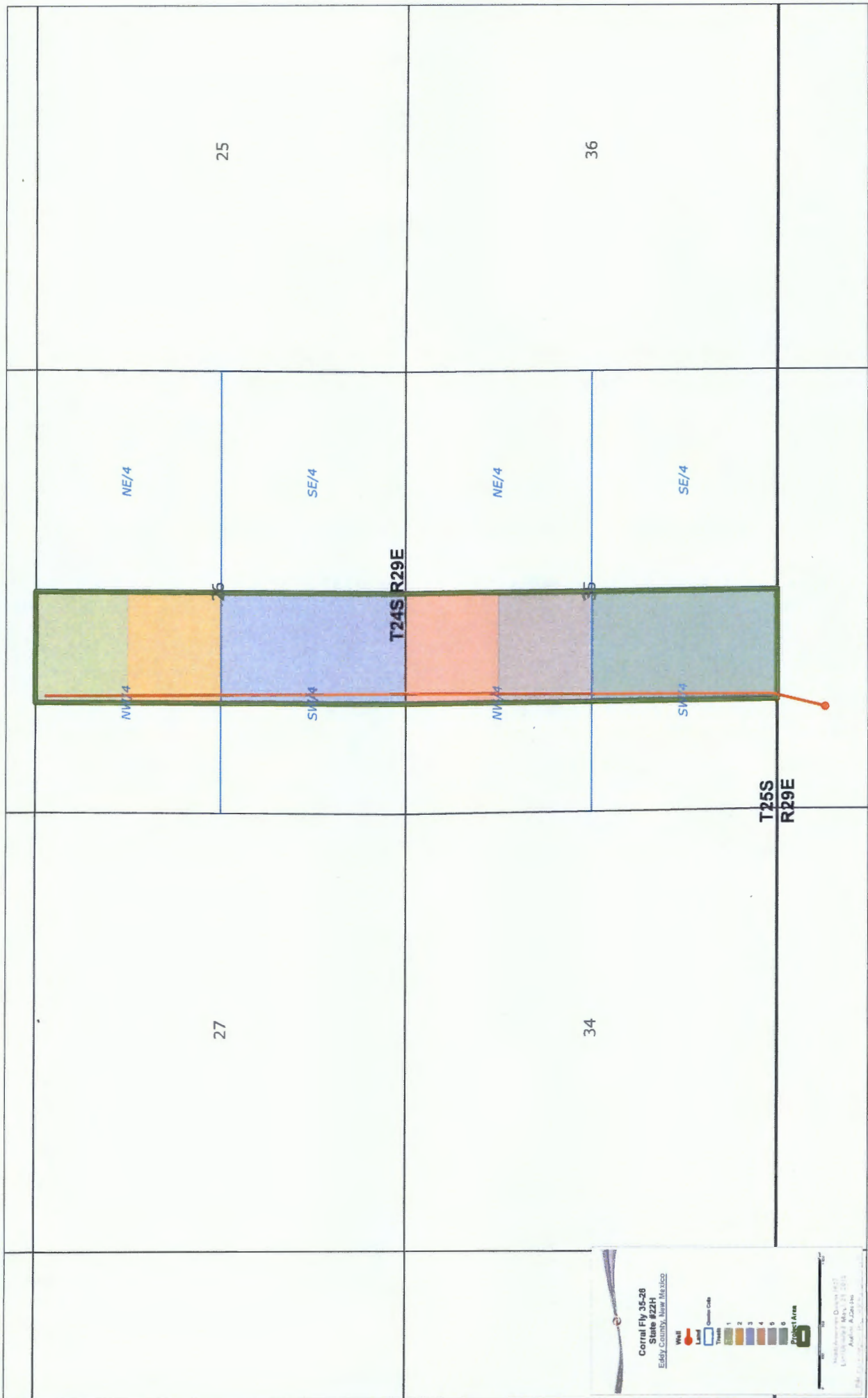


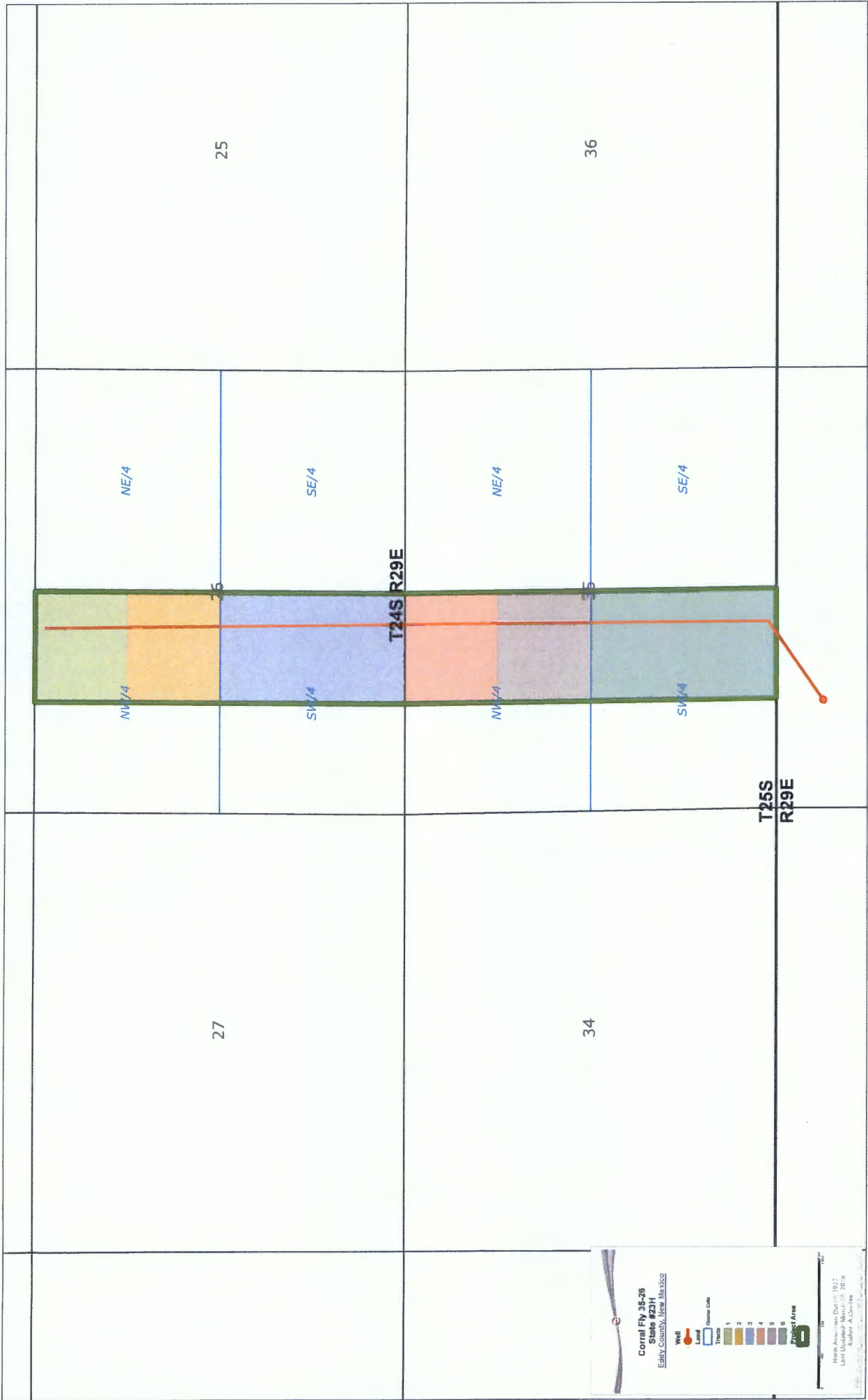
BEFORE THE OIL CONSERVATION DIVISION  
 Santa Fe, New Mexico  
 Exhibit No. 2  
 Submitted by: OXY USA INC  
 Hearing Date: April 5, 2018  
 Case Nos. 16058 & 16059

Corral Fly 35-28  
 State #21H  
 Eddy County, New Mexico

Well  
 Land  
 Quarter Coby  
 Tract  
 1  
 2  
 3  
 4  
 5  
 6  
 7  
 8  
 Project Area

North Arrow  
 Scale: 1" = 1000'  
 Date: 10/10/17  
 Author: A. Davis





**Corral Fly 35-26**  
**State #23H**  
 Eddy County, New Mexico

**Well** (Red dot and line)  
**Land** (Blue)  
**Owner** (Green)  
**Project Area** (Green outline)

**Color Key:**  
 1 (Light Green)  
 2 (Orange)  
 3 (Light Blue)  
 4 (Medium Blue)  
 5 (Dark Blue)  
 6 (Purple)  
 7 (Grey)  
 8 (Dark Grey)

North Arrow  
 Scale: 0 to 100 feet  
 North Arrow Date: 1927  
 Last Update: March 2009

WI of the Parties within the 320 acre JOA contract area of the W/2 W/2 Secs. 35 & 26, T24S-R29E

OXY USA INC.	0.242188
OXY USA WTP LP	0.376302
OCCIDENTAL PERMIAN LP	0.15625
MRC PERMIAN COMPANY	0.125
KONA, LTD.	0.033854
EDWARD K. GAYLORD, II	0.002604
ELEVEN SANDS EXPLORATION, LLC	0.001302
COG OIL & GAS LP	0.0625 * Legacy Reserves Operating and COG Oil & Gas LP make claim to this interest
LEGACY RESERVES OPERATING LLC	0.0625 * Legacy Reserves Operating and COG Oil & Gas LP make claim to this interest

1





**OXY USA Inc.**  
A subsidiary of Occidental Petroleum

5 Greenway Plaza, Suite 110, Houston, Texas 77046-0521  
P.O. Box 27570, Houston, Texas 77227-7570  
Direct: 713.350.4816 Fax: 713.985.4942  
Jeremy\_Murphrey@oxy.com

February 6, 2018

CERTIFIED MAIL – RETURN RECEIPT REQUESTED

Federal Abstract Company  
P. O. Box 2288  
Santa Fe, NM 87504

RE: **Well Proposal – Corral Fly 35-26 Fed Com #21H**  
SHL – 694' FNL and 1248' FWL  
Section 2, Township 25 South, Range 29 East, Eddy County, NM  
BHL – 180' FNL and 520' FWL  
Section 26, Township 24 South, Range 29 East, Eddy County, NM

Dear Sir/Madam:

OXY USA Inc. ("OXY") proposes the drilling of the Corral Fly 35-26 Fed Com #21H well at the referenced surface location in Section 2-25S-29E to its terminus at the referenced bottom hole location in Section 26-24S-29E, Eddy County, New Mexico. The proposed horizontal well will be drilled to an approximate vertical depth of 10,231', and to an approximate measured depth of 19,070' to evaluate the Second Bone Spring formation. A detailed description of the total estimated cost to drill and complete the well is set out in the enclosed AFE.

OXY proposes to drill this well under the terms of a modified 1989 AAPL form of Joint Operating Agreement, dated January 22, 2018, by and between OXY USA Inc., as Operator, and KONA, LTD, et al as Non-Operators, covering Section 26, Township 24 South, Range 29 East and Section 35, Township 24 South, Range 29 East N.M.P.M., Eddy Co., New Mexico ("JOA"). A copy of the JOA will be provided to you in a separate mailing.

Please indicate your election to participate in the drilling, completing, and equipping of the Corral Fly 35-26 Fed Com #21H well by executing and returning one copy of this letter within thirty (30) days.

If you have any questions, or would like to discuss this proposal in greater detail, please don't hesitate to call or e-mail me.

Sincerely,

OXY USA Inc.

Jeremy Murphrey, CPL  
Land Negotiator, Advisor

Federal Abstract Company elects to:

Enclosures

\_\_\_\_\_ participate in the drilling of the Corral Fly 35-26 Fed Com #21H

\_\_\_\_\_ non-consent the drilling of the Corral Fly 35-26 Fed Com #21H

By: \_\_\_\_\_

Name: \_\_\_\_\_

Title: \_\_\_\_\_

Date: \_\_\_\_\_

**BEFORE THE OIL CONSERVATION DIVISION**

Santa Fe, New Mexico

**Exhibit No. 4**

Submitted by: **OXY USA INC**

Hearing Date: April 5, 2018

Case Nos. 16058 & 16059



**Occidental Oil and Gas Corporation  
10k 2BS**

RMT	PRN
State & County	NM, Eddy
Field	Cerral
Well Type	10k 2BS
Date	7/19/2017

Code	Element Name	1 Prep Phase	2 Location/Rig Move	3 Drilling	4 P&A	5 Completion	6 Artificial Lift	7 Hookup	8 Facilities
<b>Location, Mobilization, Rig Move</b>									
3010	Major Mob / Demob	\$ -	\$ -	\$ -	\$ -	\$ 8,483	\$ -	\$ -	\$ -
3011	Location & Roads + Maintenance	\$ -	\$ 183,000	\$ -	\$ -	\$ 3,500	\$ -	\$ -	\$ -
3021	Rig Move	\$ -	\$ 75,000	\$ -	\$ -	\$ -	\$ -	\$ -	\$ -
<b>Labor, Services &amp; Equipment Rentals</b>									
1000	Employee Wages	\$ -	\$ 4,000	\$ 134,000	\$ -	\$ 100,000	\$ -	\$ -	\$ -
1050	Location Services	\$ -	\$ -	\$ -	\$ -	\$ -	\$ -	\$ -	\$ -
2004	Contractor Maintenance/Roustabouts	\$ -	\$ -	\$ -	\$ -	\$ 1,500	\$ -	\$ -	\$ -
2017	Contract Supervision	\$ -	\$ -	\$ -	\$ -	\$ 83,160	\$ 8,678	\$ -	\$ -
2019	Contractor HES	\$ -	\$ -	\$ -	\$ -	\$ 11,931	\$ -	\$ -	\$ -
2034	Labor services	\$ -	\$ 1,000	\$ 47,000	\$ -	\$ -	\$ -	\$ -	\$ -
3001	Services Hot Offing	\$ -	\$ -	\$ -	\$ -	\$ 12,500	\$ 5,710	\$ -	\$ -
3002	Services Mec Heavy Equipment	\$ -	\$ -	\$ -	\$ -	\$ 45,000	\$ 1,713	\$ -	\$ -
3003	Fluid Haul	\$ -	\$ 7,000	\$ 48,000	\$ -	\$ -	\$ -	\$ -	\$ -
3005	Services Inspection	\$ -	\$ -	\$ 37,000	\$ -	\$ 4,500	\$ -	\$ -	\$ -
3009	Services Wellhead	\$ -	\$ -	\$ 16,000	\$ -	\$ 45,100	\$ 5,710	\$ -	\$ -
3012	Cased/Open Hole Logging	\$ -	\$ -	\$ -	\$ -	\$ 9,500	\$ -	\$ -	\$ -
3013	Services Cased Tubing	\$ -	\$ -	\$ -	\$ -	\$ 178,535	\$ -	\$ -	\$ -
3014	Directional Drilling & LWD	\$ -	\$ -	\$ 485,000	\$ -	\$ -	\$ -	\$ -	\$ -
3015	Fishing	\$ -	\$ -	\$ -	\$ -	\$ -	\$ -	\$ -	\$ -
3016	Mud Logging	\$ -	\$ -	\$ 29,900	\$ -	\$ -	\$ -	\$ -	\$ -
3018	Services Perforating	\$ -	\$ -	\$ -	\$ -	\$ 209,800	\$ -	\$ -	\$ -
3019	Wire line & Stick line	\$ -	\$ -	\$ -	\$ -	\$ 47,250	\$ 7,422	\$ -	\$ -
3020	Rig Work	\$ -	\$ -	\$ 692,000	\$ -	\$ -	\$ 24,938	\$ -	\$ -
3022	Drilling & Completion Fluids	\$ -	\$ 6,000	\$ 68,000	\$ -	\$ -	\$ -	\$ -	\$ -
3023	Cementing	\$ -	\$ -	\$ 249,000	\$ -	\$ -	\$ -	\$ -	\$ -
3024	Services Stimulation	\$ -	\$ -	\$ -	\$ -	\$ 2,748,512	\$ -	\$ -	\$ -
3025	Services Downhole Other	\$ -	\$ -	\$ 13,000	\$ -	\$ -	\$ 13,728	\$ -	\$ -
3026	Formation Testing and Coring	\$ -	\$ -	\$ -	\$ -	\$ 228,318	\$ -	\$ -	\$ -
3029	Camp & Catering	\$ -	\$ 8,800	\$ 36,000	\$ -	\$ -	\$ -	\$ -	\$ -
3032	Communications & IT	\$ -	\$ 1,000	\$ 19,000	\$ -	\$ -	\$ -	\$ -	\$ -
3035	Services Disposal	\$ -	\$ -	\$ 124,000	\$ -	\$ 179,000	\$ 4,111	\$ -	\$ -
3039	Services Fluid Hauling from Site	\$ -	\$ -	\$ -	\$ -	\$ -	\$ -	\$ -	\$ -
4005	Rental Downhole Equipment & Tools	\$ -	\$ -	\$ 4,600	\$ -	\$ -	\$ -	\$ -	\$ -
4007	HES & Industrial waste handling	\$ -	\$ -	\$ 8,000	\$ -	\$ -	\$ -	\$ -	\$ -
4013	Rental Surface Equipment & Tools	\$ -	\$ 18,000	\$ 101,800	\$ -	\$ 131,743	\$ 7,177	\$ -	\$ -
<b>General Consumables</b>									
5021	Material Surface Other	\$ -	\$ -	\$ -	\$ -	\$ -	\$ -	\$ -	\$ -
5023	Wellhead & X-mas tree	\$ -	\$ -	\$ 69,000	\$ -	\$ 22,500	\$ -	\$ -	\$ -
5027	Material Subsurface LRI Equipment Other	\$ -	\$ -	\$ -	\$ -	\$ -	\$ 68,231	\$ -	\$ -
5078	Casing and Casing Accessories	\$ -	\$ -	\$ 722,080	\$ -	\$ -	\$ -	\$ -	\$ -
5029	Metelal Tubing and Accs	\$ -	\$ -	\$ -	\$ -	\$ -	\$ 39,967	\$ -	\$ -
5500	Material Consumables	\$ -	\$ 10,000	\$ -	\$ -	\$ 238,225	\$ -	\$ -	\$ -
5502	Drilling Fluids Products	\$ -	\$ -	\$ 195,000	\$ -	\$ -	\$ -	\$ -	\$ -
5503	Bit, Reamers, Scrapers, HOs	\$ -	\$ -	\$ 78,000	\$ -	\$ -	\$ -	\$ -	\$ -
5505	Fuel & Lubricants	\$ -	\$ 2,000	\$ 74,000	\$ -	\$ -	\$ -	\$ -	\$ -
7004	Utilities: Electricity, Water & Sewers & Trash	\$ -	\$ -	\$ 11,000	\$ -	\$ 3,276	\$ 1,440	\$ -	\$ -
<b>Logistics, Insurance &amp; Tax</b>									
8000	Land Transportation	\$ -	\$ 1,000	\$ 44,000	\$ -	\$ 10,000	\$ -	\$ -	\$ -
8102	Tax & contingency	\$ -	\$ 12,000	\$ 287,000	\$ -	\$ 201,143	\$ 8,180	\$ -	\$ -
8918	Permits/Persements/Other	\$ -	\$ -	\$ -	\$ -	\$ -	\$ -	\$ -	\$ -
8921	Waste Handling and Disp	\$ -	\$ -	\$ 38,000	\$ -	\$ -	\$ -	\$ -	\$ -
8945	Loss & Loss Expenses Paid	\$ -	\$ -	\$ -	\$ -	\$ -	\$ -	\$ -	\$ -
9999	Other Costs	\$ -	\$ -	\$ -	\$ -	\$ -	\$ -	\$ -	\$ -
<b>Subtotal</b>		\$ -	\$ 248,000	\$ 3,624,900	\$ -	\$ 4,584,008	\$ 198,000	\$ -	\$ -

Drilling / Comp Engr
Drilling Engr Supervisor - Diego Tallex
Completions Engr Supervisor - Robert Rodriguez
Drilling & Completions Manager - John Willis

Total Drilling (1+2+3+4):	\$ 3,673,000
Total Completion (5+6+7):	\$ 4,790,008
Total Facilities (8):	\$ -
<b>Total Well Cost (1+2+3+4+5+6+7+8):</b>	<b>\$ 8,632,808</b>
Assumptions:	

WI of the Parties within the 320 acre JOA contract area of the E/2 W/2 Secs. 35 & 26, T24S-R29E

OXY USA INC.	0.242188
OXY USA WTP LP	0.501302
OCCIDENTAL PERMIAN LP	0.15625
KONA, LTD.	0.033854
EDWARD K. GAYLORD, II	0.002604
ELEVEN SANDS EXPLORATION, LLC	0.001302
COG OIL & GAS LP	0.0625 * Legacy Reserves Operating and COG Oil & Gas LP make claim to this interest
LEGACY RESERVES OPERATING LLC	0.0625 * Legacy Reserves Operating and COG Oil & Gas LP make claim to this interest



**OXY USA Inc.**  
A subsidiary of Occidental Petroleum

5 Greenway Plaza, Suite 110, Houston, Texas 77046-0521  
P.O. Box 27570, Houston, Texas 77227-7570  
Direct: 713.350.4816 Fax: 713.985.4942  
Jeremy\_Murphrey@oxy.com

January 29, 2018

CERTIFIED MAIL – RETURN RECEIPT REQUESTED

Legacy Reserves Operating LP  
303 W. Wall Street, Suite 1800  
Midland, TX 79701

**RE: Well Proposal – Corral Fly 35-26 Fed Com #22H**  
SHL – 694' FNL and 1278' FWL  
Section 2, Township 2s South, Range 29 East, Eddy County, NM  
BHL – 180' FSL and 140a' FWL  
Section 26, Township 24 South, Range 29 East, Eddy County, NM

Dear Sir/Madam:

OXY USA Inc. ("OXY") proposes the drilling of the Corral Fly 35-26 Fed Com #22H well at the referenced surface location in Section 2-25S-29E to its terminus at the referenced bottom hole location in Section 26-24S-29E, Eddy County, New Mexico. The proposed horizontal well will be drilled to an approximate vertical depth of 8,933', and to an approximate measured depth of 19,087' to evaluate the Second Bone Spring formation. A detailed description of the total estimated cost to drill and complete the well is set out in the enclosed AFE.

OXY proposes to drill this well under the terms of a modified 1989 AAPL form of Joint Operating Agreement, dated January 29, 2018, by and between OXY USA Inc., as Operator, and KONA, LTD, et al as Non-Operators, covering Section 26, Township 24 South, Range 29 East and Section 35, Township 24 South, Range 29 East N.M.P.M., Eddy Co., New Mexico ("JOA"). A copy of the JOA was emailed to you.

Please indicate your election to participate in the drilling, completing, and equipping of the Corral Fly 35-26 Fed Com #22H well by executing and returning one copy of this letter within thirty (30) days.

if you have any questions, or would like to discuss this proposal in greater detail, please don't hesitate to call or e-mail me.

Sincerely,

OXY USA Inc.

Jeremy Murphrey, CPL  
Land Negotiator Advisor

Legacy Reserves Operating LP  
effects to:

Enclosures

\_\_\_ participate in the drilling of the Corral Fly 35-26 Fed Com #22H

\_\_\_ non-consent the drilling of the Corral Fly 35-26 Fed Com #22H

By: \_\_\_\_\_

Name: \_\_\_\_\_

Title: \_\_\_\_\_

Date: \_\_\_\_\_



**Occidental Oil and Gas Corporation**  
**10k 2BS**

RMT:	PRN
State & County:	NM, Eddy
Field:	Cornal
Well Type:	10k 2BS
Date:	7/10/2017

Code	Element Name	1 Prep Phase	2 Location/Rig Move	3 Drilling	4 P&A	5 Completion	6 Artificial LIFT	7 Hookup	8 Facilities
<b>Location, Mobilization, Rig Move</b>									
3010	Major Mob / Demob	\$ -	\$ -	\$ -	\$ -	\$ 8,463	\$ -	\$ -	\$ -
3011	Location & Roads + Maintenance	\$ -	\$ 103,000	\$ -	\$ -	\$ 3,500	\$ -	\$ -	\$ -
3021	Rig Move	\$ -	\$ 75,000	\$ -	\$ -	\$ -	\$ -	\$ -	\$ -
<b>Labor, Services &amp; Equipment Rentals</b>									
1000	Employee Wages	\$ -	\$ 4,000	\$ 134,000	\$ -	\$ 100,000	\$ -	\$ -	\$ -
1050	Location Services	\$ -	\$ -	\$ -	\$ -	\$ -	\$ -	\$ -	\$ -
2004	Contractor Maintenance/Roustabouts	\$ -	\$ -	\$ -	\$ -	\$ 1,500	\$ -	\$ -	\$ -
2017	Contract Supervision	\$ -	\$ -	\$ -	\$ -	\$ 63,160	\$ 8,678	\$ -	\$ -
2019	Contractor HES	\$ -	\$ -	\$ -	\$ -	\$ 11,931	\$ -	\$ -	\$ -
2034	Labor services	\$ -	\$ 1,000	\$ 47,000	\$ -	\$ -	\$ -	\$ -	\$ -
3001	Services Hot Oiling	\$ -	\$ -	\$ -	\$ -	\$ 12,500	\$ 5,710	\$ -	\$ -
3002	Services Misc Heavy Equipment	\$ -	\$ -	\$ -	\$ -	\$ 45,000	\$ 1,713	\$ -	\$ -
3003	Fluid Haul	\$ -	\$ 7,000	\$ 46,000	\$ -	\$ -	\$ -	\$ -	\$ -
3005	Services Inspection	\$ -	\$ -	\$ 37,000	\$ -	\$ 4,500	\$ -	\$ -	\$ -
3009	Services Wellhead	\$ -	\$ -	\$ 16,000	\$ -	\$ 45,100	\$ 5,710	\$ -	\$ -
3012	Cased/Open Hole Logging	\$ -	\$ -	\$ -	\$ -	\$ 9,500	\$ -	\$ -	\$ -
3013	Services Coiled Tubing	\$ -	\$ -	\$ -	\$ -	\$ 178,535	\$ -	\$ -	\$ -
3014	Directional Drilling & LWD	\$ -	\$ -	\$ 485,000	\$ -	\$ -	\$ -	\$ -	\$ -
3015	Fishing	\$ -	\$ -	\$ -	\$ -	\$ -	\$ -	\$ -	\$ -
3016	Mud Logging	\$ -	\$ -	\$ 29,000	\$ -	\$ -	\$ -	\$ -	\$ -
3018	Services Perforating	\$ -	\$ -	\$ -	\$ -	\$ 205,800	\$ -	\$ -	\$ -
3019	Wire line & Slick line	\$ -	\$ -	\$ -	\$ -	\$ 47,250	\$ 7,422	\$ -	\$ -
3020	Rig Work	\$ -	\$ -	\$ 692,000	\$ -	\$ -	\$ 24,936	\$ -	\$ -
3022	Drilling & Completion Fluids	\$ -	\$ 6,000	\$ 66,000	\$ -	\$ -	\$ -	\$ -	\$ -
3023	Cementing	\$ -	\$ -	\$ 249,000	\$ -	\$ -	\$ -	\$ -	\$ -
3024	Services Stimulation	\$ -	\$ -	\$ -	\$ -	\$ 2,748,512	\$ -	\$ -	\$ -
3025	Services Downhole Other	\$ -	\$ -	\$ 13,000	\$ -	\$ 63,550	\$ 13,726	\$ -	\$ -
3026	Formation Testing and Coring	\$ -	\$ -	\$ -	\$ -	\$ 228,319	\$ -	\$ -	\$ -
3029	Camp & Catering	\$ -	\$ 8,000	\$ 36,000	\$ -	\$ -	\$ -	\$ -	\$ -
3032	Communications & IT	\$ -	\$ 1,000	\$ 19,000	\$ -	\$ -	\$ -	\$ -	\$ -
3035	Services Disposal	\$ -	\$ -	\$ 124,000	\$ -	\$ 179,000	\$ 4,111	\$ -	\$ -
3038	Services Fluid Hauling from Site	\$ -	\$ -	\$ -	\$ -	\$ -	\$ -	\$ -	\$ -
4005	Rental Downhole Equipment & Tools	\$ -	\$ -	\$ 4,000	\$ -	\$ -	\$ -	\$ -	\$ -
4007	HES & Industrial waste handling	\$ -	\$ -	\$ 8,000	\$ -	\$ -	\$ -	\$ -	\$ -
4013	Rental Surface Equipment & Tools	\$ -	\$ 19,000	\$ 101,000	\$ -	\$ 131,743	\$ 7,177	\$ -	\$ -
<b>Consumables</b>									
6021	Material Surface Other	\$ -	\$ -	\$ -	\$ -	\$ -	\$ -	\$ -	\$ -
6023	Wellhead & X-mas tree	\$ -	\$ -	\$ 69,000	\$ -	\$ 22,500	\$ -	\$ -	\$ -
6027	Material Subsurface Lift Equipment Other	\$ -	\$ -	\$ -	\$ -	\$ -	\$ 66,231	\$ -	\$ -
6028	Casing and Casing Accessories	\$ -	\$ -	\$ 722,000	\$ -	\$ -	\$ -	\$ -	\$ -
6029	Material Tubing and Accs	\$ -	\$ -	\$ -	\$ -	\$ -	\$ 39,967	\$ -	\$ -
5500	Material Consumables	\$ -	\$ 10,000	\$ -	\$ -	\$ 239,225	\$ -	\$ -	\$ -
5502	Drilling Fluids Products	\$ -	\$ -	\$ 195,000	\$ -	\$ -	\$ -	\$ -	\$ -
5503	Bits, Reamers, Scrapers, HO's	\$ -	\$ -	\$ 78,000	\$ -	\$ -	\$ -	\$ -	\$ -
5505	Fuel & Lubricants	\$ -	\$ 2,000	\$ 74,000	\$ -	\$ -	\$ -	\$ -	\$ -
7004	Utilities: Electricity, Water & Sewers & Trash	\$ -	\$ -	\$ 11,000	\$ -	\$ 3,276	\$ 1,440	\$ -	\$ -
<b>Logistics, Insurance &amp; Tax</b>									
8000	Land Transportation	\$ -	\$ 1,000	\$ 44,000	\$ -	\$ 10,000	\$ -	\$ -	\$ -
8102	Tax & contingency	\$ -	\$ 12,000	\$ 287,000	\$ -	\$ 201,143	\$ 8,180	\$ -	\$ -
8918	Permits/Settlements/Other	\$ -	\$ -	\$ -	\$ -	\$ -	\$ -	\$ -	\$ -
8921	Waste Handling and Disp	\$ -	\$ -	\$ 38,000	\$ -	\$ -	\$ -	\$ -	\$ -
8945	Loss & Loss Expenses Paid	\$ -	\$ -	\$ -	\$ -	\$ -	\$ -	\$ -	\$ -
9999	Other Costs	\$ -	\$ -	\$ -	\$ -	\$ -	\$ -	\$ -	\$ -
<b>Subtotal</b>		\$ -	\$ 249,000	\$ 3,824,000	\$ -	\$ 4,564,005	\$ 185,000	\$ -	\$ -

Drilling / Comp Engr
Drilling Engr Supervisor - Diego Tellez
Completions Engr Supervisor - Robert Rodriguez
Drilling & Completions Manager - John Willie

<b>Total Drilling (1+2+3+4):</b>	<b>\$ 3,873,000</b>
<b>Total Completion (5+6+7):</b>	<b>\$ 4,799,005</b>
<b>Total Facilities (8):</b>	<b>\$ -</b>
<b>Total Well Cost (1+2+3+4+5+6+7+8):</b>	<b>\$ 8,632,005</b>
<b>Assumptions:</b>	



**OXY USA Inc.**  
A subsidiary of Occidental Petroleum

5 Greenway Plaza, Suite 110, Houston, Texas 77046-0521  
P.O. Box 27570, Houston, Texas 77227-7570  
Direct: 713.350.4816 Fax: 713.985.4942  
Jeremy\_Murphrey@oxy.com

January 29, 2018

CERTIFIED MAIL – RETURN RECEIPT REQUESTED

Legacy Reserves Operating LP  
303 W. Wall Street, Suite 1800  
Midland, TX 79701

RE: **Well Proposal – Corral Fly 35-26 Fed Com #23H**  
SHL – 694' FNL and 1308' FWL  
Section 2, Township 25 South, Range 29 East, Eddy County, NM  
BHL – 180' FNL and 2281' FWL  
Section 26, Township 24 South, Range 29 East, Eddy County, NM

Dear Sir/Madam:

OXY USA Inc. ("OXY") proposes the drilling of the Corral Fly 35-26 Fed Com #23H well at the referenced surface location in Section 2-25S-29E to its terminus at the referenced bottom hole location in Section 26-24S-29E, Eddy County, New Mexico. The proposed horizontal well will be drilled to an approximate vertical depth of 8,949', and to an approximate measured depth of 19,157' to evaluate the Second Bone Spring formation. A detailed description of the total estimated cost to drill and complete the well is set out in the enclosed AFE.

OXY proposes to drill this well under the terms of a modified 1989 AAPL form of Joint Operating Agreement, dated October 1, 2016, by and between OXY USA Inc., as Operator, and KONA, LTD, et al as Non-Operators, covering Section 26, Township 24 South, Range 29 East and Section 35, Township 24 South, Range 29 East N.M.P.M., Eddy Co., New Mexico ("JOA"). A copy of the JOA was emailed to you.

Please indicate your election to participate in the drilling, completing, and equipping of the Corral Fly 35-26 Fed Com #23H well by executing and returning one copy of this letter within thirty (30) days.

If you have any questions, or would like to discuss this proposal in greater detail, please don't hesitate to call or e-mail me.

Sincerely,

OXY USA Inc.

Jeremy Murphrey, CPL  
Land Negotiator, Advisor

Enclosures

Legacy Reserves Operating LP  
elects to:

\_\_\_ participate in the drilling of the Corral Fly 35-26 Fed Com #23H

\_\_\_ non-consent the drilling of the Corral Fly 35-26 Fed Com #23H

By: \_\_\_\_\_

Name: \_\_\_\_\_

Title: \_\_\_\_\_

Date: \_\_\_\_\_



**Occidental Oil and Gas Corporation  
10k 2BS**

RMT: PRN  
State & County: NM, Eddy  
Field: Corral  
Well Type: 10k 2BS  
Date: 7/10/2017

Code	Element Name	1 Prep Phase	2 Location/Rig Move	3 Drilling	4 P&A	5 Completion	6 Artificial Lift	7 Hookup	8 Facilities
<b>Location, Mobilization, Rig Move</b>									
3010	Major Mob / Demob	\$ -	\$ -	\$ -	\$ -	\$ 8,463	\$ -	\$ -	\$ -
3011	Location & Roads + Maintenance	\$ -	\$ 103,000	\$ -	\$ -	\$ 3,500	\$ -	\$ -	\$ -
3021	Rig Move	\$ -	\$ 75,000	\$ -	\$ -	\$ -	\$ -	\$ -	\$ -
<b>Labor, Services &amp; Equipment Rentals</b>									
1000	Employee Wages	\$ -	\$ 4,000	\$ 134,000	\$ -	\$ 100,000	\$ -	\$ -	\$ -
1050	Location Services	\$ -	\$ -	\$ -	\$ -	\$ -	\$ -	\$ -	\$ -
2004	Contractor Maintenance/Roustabouts	\$ -	\$ -	\$ -	\$ -	\$ 1,500	\$ -	\$ -	\$ -
2017	Contract Supervision	\$ -	\$ -	\$ -	\$ -	\$ 63,160	\$ 8,678	\$ -	\$ -
2019	Contractor HES	\$ -	\$ -	\$ -	\$ -	\$ 11,931	\$ -	\$ -	\$ -
2034	Labor services	\$ -	\$ 1,000	\$ 47,000	\$ -	\$ -	\$ -	\$ -	\$ -
3001	Services Hot Oiling	\$ -	\$ -	\$ -	\$ -	\$ 12,500	\$ 5,710	\$ -	\$ -
3002	Services Misc Heavy Equipment	\$ -	\$ -	\$ -	\$ -	\$ 45,000	\$ 1,713	\$ -	\$ -
3003	Fluid Haul	\$ -	\$ 7,000	\$ 46,000	\$ -	\$ -	\$ -	\$ -	\$ -
3005	Services Inspection	\$ -	\$ -	\$ 37,000	\$ -	\$ 4,500	\$ -	\$ -	\$ -
3009	Services Wellhead	\$ -	\$ -	\$ 18,000	\$ -	\$ 45,100	\$ 5,710	\$ -	\$ -
3012	Cased/Open Hole Logging	\$ -	\$ -	\$ -	\$ -	\$ 9,500	\$ -	\$ -	\$ -
3013	Services Coiled Tubing	\$ -	\$ -	\$ -	\$ -	\$ 178,535	\$ -	\$ -	\$ -
3014	Directional Drilling & LWD	\$ -	\$ -	\$ 485,000	\$ -	\$ -	\$ -	\$ -	\$ -
3015	Fishing	\$ -	\$ -	\$ -	\$ -	\$ -	\$ -	\$ -	\$ -
3016	Mud Logging	\$ -	\$ -	\$ 29,000	\$ -	\$ -	\$ -	\$ -	\$ -
3018	Services Perforating	\$ -	\$ -	\$ -	\$ -	\$ 205,800	\$ -	\$ -	\$ -
3019	Wire line & Slick line	\$ -	\$ -	\$ -	\$ -	\$ 47,250	\$ 7,422	\$ -	\$ -
3020	Rig Work	\$ -	\$ -	\$ 692,000	\$ -	\$ -	\$ 24,936	\$ -	\$ -
3022	Drilling & Completion Fluids	\$ -	\$ 6,000	\$ 66,000	\$ -	\$ -	\$ -	\$ -	\$ -
3023	Cementing	\$ -	\$ -	\$ 249,000	\$ -	\$ -	\$ -	\$ -	\$ -
3024	Services Stimulation	\$ -	\$ -	\$ -	\$ -	\$ 2,748,512	\$ -	\$ -	\$ -
3025	Services Downhole Other	\$ -	\$ -	\$ 13,000	\$ -	\$ 63,550	\$ 13,726	\$ -	\$ -
3026	Formation Testing and Coring	\$ -	\$ -	\$ -	\$ -	\$ 228,319	\$ -	\$ -	\$ -
3029	Camp & Catering	\$ -	\$ 8,000	\$ 36,000	\$ -	\$ -	\$ -	\$ -	\$ -
3032	Communications & IT	\$ -	\$ 1,000	\$ 19,000	\$ -	\$ -	\$ -	\$ -	\$ -
3035	Services Disposal	\$ -	\$ -	\$ 124,000	\$ -	\$ 179,000	\$ 4,111	\$ -	\$ -
3039	Services Fluid Hauling from Site	\$ -	\$ -	\$ -	\$ -	\$ -	\$ -	\$ -	\$ -
4005	Rental Downhole Equipment & Tools	\$ -	\$ -	\$ 4,000	\$ -	\$ -	\$ -	\$ -	\$ -
4007	HES & Industrial waste handling	\$ -	\$ -	\$ 8,000	\$ -	\$ -	\$ -	\$ -	\$ -
4013	Rental Surface Equipment & Tools	\$ -	\$ 19,000	\$ 101,000	\$ -	\$ 131,743	\$ 7,177	\$ -	\$ -
<b>Consumables</b>									
5021	Material Surface Other	\$ -	\$ -	\$ -	\$ -	\$ -	\$ -	\$ -	\$ -
5023	Wellhead & X-mas tree	\$ -	\$ -	\$ 69,000	\$ -	\$ 22,500	\$ -	\$ -	\$ -
5027	Material Subsurface Lift Equipment Other	\$ -	\$ -	\$ -	\$ -	\$ -	\$ 66,231	\$ -	\$ -
5028	Casing and Casing Accessories	\$ -	\$ -	\$ 722,000	\$ -	\$ -	\$ -	\$ -	\$ -
5029	Material Tubing and Accs	\$ -	\$ -	\$ -	\$ -	\$ -	\$ 39,967	\$ -	\$ -
5500	Material Consumables	\$ -	\$ 10,000	\$ -	\$ -	\$ 239,225	\$ -	\$ -	\$ -
5502	Drilling Fluids Products	\$ -	\$ -	\$ 195,000	\$ -	\$ -	\$ -	\$ -	\$ -
5503	Bits, Reamers, Scrapers, HC's	\$ -	\$ -	\$ 78,000	\$ -	\$ -	\$ -	\$ -	\$ -
5505	Fuel & Lubricants	\$ -	\$ 2,000	\$ 74,000	\$ -	\$ -	\$ -	\$ -	\$ -
7004	Utilities: Electricity, Water & Sewers & Trash	\$ -	\$ -	\$ 11,000	\$ -	\$ 3,276	\$ 1,440	\$ -	\$ -
<b>Logistics, Insurance &amp; Tax</b>									
8000	Land Transportation	\$ -	\$ 1,000	\$ 44,000	\$ -	\$ 10,000	\$ -	\$ -	\$ -
8102	Tax & contingency	\$ -	\$ 12,000	\$ 287,000	\$ -	\$ 201,143	\$ 8,180	\$ -	\$ -
8918	Permits/Settlements/Other	\$ -	\$ -	\$ -	\$ -	\$ -	\$ -	\$ -	\$ -
8921	Waste Handling and Disp	\$ -	\$ -	\$ 38,000	\$ -	\$ -	\$ -	\$ -	\$ -
8945	Loss & Loss Expenses Paid	\$ -	\$ -	\$ -	\$ -	\$ -	\$ -	\$ -	\$ -
9999	Other Costs	\$ -	\$ -	\$ -	\$ -	\$ -	\$ -	\$ -	\$ -
<b>Subtotal</b>		\$ -	\$ 249,000	\$ 3,624,000	\$ -	\$ 4,564,005	\$ 195,000	\$ -	\$ -

Drilling / Comp Engr
Drilling Engr Supervisor - Diego Tellez
Completions Engr Supervisor - Robert Rodriguez
Drilling & Completions Manager - John Willis

<b>Total Drilling (1+2+3+4):</b>	\$ 3,873,000
<b>Total Completion (5+6+7):</b>	\$ 4,759,005
<b>Total Facilities (8):</b>	\$ -
<b>Total Well Cost (1+2+3+4+5+6+7+8):</b>	\$ 8,632,005
Assumptions:	

STATE OF NEW MEXICO  
DEPARTMENT OF ENERGY, MINERALS AND NATURAL RESOURCES  
OIL CONSERVATION DIVISION

APPLICATION OF OXY USA INC. FOR  
ALTERNATIVE NON-STANDARD SPACING  
AND PRORATION UNITS, APPROVAL OF A  
NON-STANDARD PROJECT AREA AS  
NEEDED AND COMPULSORY POOLING,  
EDDY COUNTY, NEW MEXICO.

CASE NO. 16058

APPLICATION OF OXY USA INC.  
FOR A NON-STANDARD SPACING AND  
PRORATION UNIT AND COMPULSORY POOLING  
EDDY COUNTY, NEW MEXICO.

CASE NO. 16059

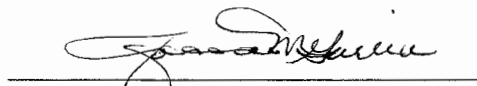
AFFIDAVIT

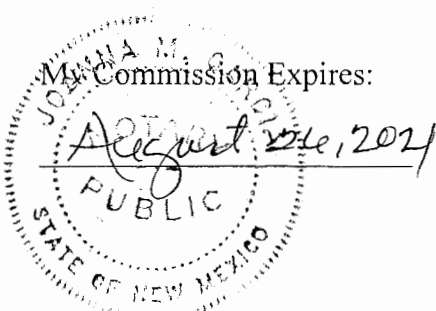
STATE OF NEW MEXICO )  
  ) ss.  
COUNTY OF SANTA FE )

Michael Feldewert, attorney in fact and authorized representative of **OXY USA INC.**, the Applicant herein, being first duly sworn, upon oath, states that the above-referenced Applications have been provided under the notice letters and proof of receipts attached hereto,

  
\_\_\_\_\_  
Michael Feldewert

SUBSCRIBED AND SWORN to before me this 4th day of April, 2018 by Michael Feldewert.

  
\_\_\_\_\_  
Notary Public





HOLLAND & HART<sup>LLP</sup>



**Michael H. Feldewert**  
Recognized Specialist in the  
Area of Natural Resources - Oil  
and Gas Law - New Mexico  
Board of Legal Specialization  
mfeldewert@hollandhart.com

March 16, 2018

**VIA CERTIFIED MAIL**  
**CERTIFIED RECEIPT REQUESTED**

**TO: ALL INTEREST OWNERS SUBJECT TO POOLING PROCEEDINGS**

**Re: Application of OXY USA Inc. for alternative non-standard spacing and proration units, approval of a non-standard project area as needed and compulsory pooling, Eddy County, New Mexico.  
Corral Fly "35-26" Federal Com No. 21H Well**

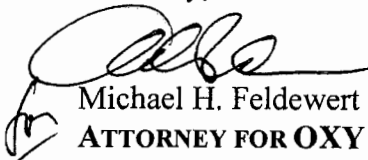
Ladies & Gentlemen:

This letter is to advise you that OXY USA Inc. has filed the enclosed application with the New Mexico Oil Conservation Division. This application will be set for hearing before a Division Examiner at 8:15 a.m. on April 5, 2018. The hearing will be held in Porter Hall in the Oil Conservation Division's Santa Fe Offices located at 1220 South Saint Francis Drive, Santa Fe, New Mexico 87505. You are not required to attend this hearing, but as an owner of an interest that may be affected by this application, you may appear and present testimony. Failure to appear at that time and become a party of record will preclude you from challenging the matter at a later date.

Parties appearing in cases are required by Division Rule 19.15.4.13.B to file a Pre-hearing Statement four business days in advance of a scheduled hearing. This statement must be filed at the Division's Santa Fe office at the above specified address and should include: the names of the parties and their attorneys; a concise statement of the case; the names of all witnesses the party will call to testify at the hearing; the approximate time the party will need to present its case; and identification of any procedural matters that are to be resolved prior to the hearing.

If you have any questions about this matter please contact Jeremy Murphrey, at (713) 350-4816 or [Jeremy\\_Murphrey@oxy.com](mailto:Jeremy_Murphrey@oxy.com).

Sincerely,



Michael H. Feldewert  
ATTORNEY FOR OXY USA INC.

Holland & Hart LLP

Phone [505] 988-4421 Fax [505] 983-6043 [www.hollandhart.com](http://www.hollandhart.com)

110 North Guadalupe Suite 1 Santa Fe, New Mexico 87501 Mailing Address P.O. Box 2208 Santa Fe, NM 87504-2208



# Shipment Confirmation Acceptance Notice

## A. Mailer Action

**Note to Mailer:** The labels and volume associated to this form online, **must** match the labeled packages being presented to the USPS® employee with this form.

2018-03-16 Oxy-Corral Fly 21H  
add parties from 22&23 Pool List -  
Case No. 16057

Shipment Date: 03/14/2018  
Shipped From:  
Name: HOLLAND & HART LLP  
Address: 110 N GUADALUPE ST # 1  
City: SANTA FE  
State: NM ZIP+4® 87501

Type of Mail	Volume
Priority Mail Express®*	
Priority Mail®	0
First-Class Package Service®	
Returns	
International*	
Other	2
Total	2

\*Start time for products with service guarantees will begin when mail arrives at the local Post Office™ and items receive individual processing and acceptance scans.

## B. USPS Action

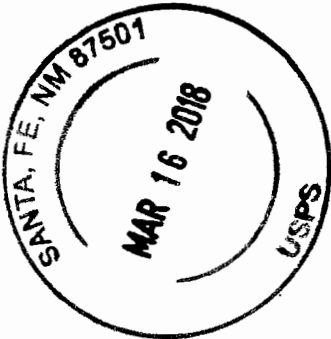
- Note to RSS Clerk:
1. Home screen > Mailing/Shipping > More
  2. Select Shipment Confirm
  3. Scan or enter the barcode/label number from PS Form 5630
  4. Confirm the volume count message by selecting Yes or No
  5. Select Pay and End Visit to complete transaction

USPS EMPLOYEE: Please scan upon pickup or receipt of mail.  
Leave form with customer or in customer's mail receptacle.

USPS SCAN AT ACCEPTANCE



9275 0901 1935 6200 0007 5761 01





**Firm Mailing Book For Accountable Mail**

Name and Address of Sender		Check type of mail or service		Affix Stamp Here (if issued as an international certificate of mailing or for additional copies of this receipt). Postmark with Date of Receipt.															
USPS Tracking/Article Number		<input type="checkbox"/> Adult Signature Required <input type="checkbox"/> Adult Signature Restricted Delivery <input checked="" type="checkbox"/> Certified Mail <input type="checkbox"/> Certified Mail Restricted Delivery <input type="checkbox"/> Collect on Delivery (COD) <input type="checkbox"/> Insured Mail <input type="checkbox"/> Priority Mail		<input type="checkbox"/> Priority Mail Express <input type="checkbox"/> Registered Mail <input type="checkbox"/> Return Receipt for Merchandise <input type="checkbox"/> Signature Confirmation <input type="checkbox"/> Signature Confirmation Restricted Delivery		Postage	(Extra Service) Fee	Handling Charge	Actual Value if Registered	Insured Value	Due Sender if COD	ASR Fee	ASRD Fee	RD Fee	RR Fee	SC Fee	SCRD Fee	SH Fee	
1.	9214 8901 9403 8304 9534 55	Addressee (Name, Street, City, State, & ZIP Code™) Matador Resource Company 5400 LBJ Freeway Suite 1500 Dallas TX 75240		0.49	3.45									1.50					
2.	9214 8901 9403 8304 9534 62	Addressee (Name, Street, City, State, & ZIP Code™) Fed Abstract Company PO BOX 2288 Santa Fe NM 87504		0.49	3.45		Handling Charge - if Registered and over \$50,000 in value						Adult Signature Required	Adult Signature Restricted Delivery	Restricted Delivery	Return Receipt	Signature Confirmation	Signature Confirmation Restricted Delivery	Special Handling



⚠ You are using an old version of e-Certify. [Click here](#) to update to the new version.

Welcome Joanna Garcia. (Not [Joanna Garcia?](#))  
Company:  
Holland & Hart LLP

- Home
- My Queue
- Piece Search
- Support
- Logout

< History > [Mail Jobs](#) > [Mail Job Details](#)



My Tools

Mail Jobs

Mail Pieces

Manual Mailings

Reports

Setup

Account

Tools

Mail Pieces

Filter:

< No Filter >

	Barcode	Recipient	Status	DL	Custom
	9214 8901 9403 8304 9534 62	Fed Abstract Company PO BOX 2288 Santa Fe NM 87504	Delivered Signature Received		No
	9214 8901 9403 8304 9534 55	Matador Resource Company 5400 LBJ Freeway Suite 1500 Dallas TX 75240	Delivered Signature Received		No

Print | Refresh | Home

HOLLAND & HART<sup>LLP</sup>



**Michael H. Feldewert**  
Recognized Specialist in the  
Area of Natural Resources - Oil  
and Gas Law - New Mexico  
Board of Legal Specialization  
mfeldewert@hollandhart.com

March 16, 2018

**VIA CERTIFIED MAIL**  
**CERTIFIED RECEIPT REQUESTED**

**TO: ALL INTEREST OWNERS SUBJECT TO POOLING PROCEEDINGS**

**Re: Application of OXY USA Inc. for a non-standard spacing and proration unit  
and compulsory pooling, Eddy County, New Mexico.  
Corral Fly "35-26" Federal Com Nos. 22H and 23H Wells**

Ladies & Gentlemen:

This letter is to advise you that OXY USA Inc. has filed the enclosed application with the New Mexico Oil Conservation Division. This application will be set for hearing before a Division Examiner at 8:15 a.m. on April 5, 2018. The hearing will be held in Porter Hall in the Oil Conservation Division's Santa Fe Offices located at 1220 South Saint Francis Drive, Santa Fe, New Mexico 87505. You are not required to attend this hearing, but as an owner of an interest that may be affected by this application, you may appear and present testimony. Failure to appear at that time and become a party of record will preclude you from challenging the matter at a later date.

Parties appearing in cases are required by Division Rule 19.15.4.13.B to file a Pre-hearing Statement four business days in advance of a scheduled hearing. This statement must be filed at the Division's Santa Fe office at the above specified address and should include: the names of the parties and their attorneys; a concise statement of the case; the names of all witnesses the party will call to testify at the hearing; the approximate time the party will need to present its case; and identification of any procedural matters that are to be resolved prior to the hearing.

If you have any questions about this matter please contact Jeremy Murphrey, at (713) 350-4816 or [Jeremy\\_Murphrey@oxy.com](mailto:Jeremy_Murphrey@oxy.com).

Sincerely,

Michael H. Feldewert  
ATTORNEY FOR OXY USA INC.

Holland & Hart LLP

Phone [505] 988-4421 Fax [505] 983-6043 [www.hollandhart.com](http://www.hollandhart.com)

110 North Guadalupe Suite 1 Santa Fe, New Mexico 87501 Mailing Address P.O. Box 2208 Santa Fe, NM 87504-2208



# Shipment Confirmation Acceptance Notice

## A. Mailer Action

**Note to Mailer:** The labels and volume associated to this form online, **must** match the labeled packages being presented to the USPS® employee with this form.

2018-03-16 OXY-Corral Fly 22H & 23H Pooling List -  
Case No. 16059

Shipment Date: 03/14/2018  
Shipped From:  
Name: HOLLAND & HART LLP  
Address: 110 N GUADALUPE ST # 1  
City: SANTA FE  
State: NM ZIP+4® 87501

Type of Mail	Volume
Priority Mail Express®*	
Priority Mail®	0
First-Class Package Service®	
Returns	
International*	
Other	13
Total	13

\*Start time for products with service guarantees will begin when mail arrives at the local Post Office™ and items receive individual processing and acceptance scans.

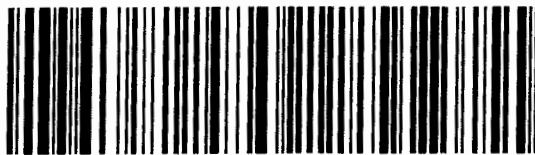
## B. USPS Action

Note to RSS Clerk:

1. Home screen > Mailing/Shipping > More
2. Select Shipment Confirm
3. Scan or enter the barcode/label number from PS Form 5630
4. Confirm the volume count message by selecting Yes or No
5. Select Pay and End Visit to complete transaction

USPS EMPLOYEE: Please scan upon pickup or receipt of mail.  
Leave form with customer or in customer's mail receptacle.

USPS SCAN AT ACCEPTANCE



9275 0901 1935 6200 0007 5753 40





**Firm Mailing Book For Accountable Mail**

Name and Address of Sender

Holland & Hart LLP  
110 N Guadalupe St # 1  
Santa Fe NM 87501

Check type of mail or service

- Adult Signature Required
- Adult Signature Restricted Delivery
- Certified Mail
- Certified Mail Restricted Delivery
- Collect on Delivery (COD)
- Insured Mail
- Priority Mail
- Priority Mail Express
- Registered Mail
- Return Receipt for Merchandise
- Signature Confirmation
- Signature Confirmation Restricted Delivery

**Affix Stamp Here**  
*(if issued as an international certificate of mailing or for additional copies of this receipt).*  
**Postmark with Date of Receipt.**

USPS Tracking/Article Number	Addressee (Name, Street, City, State, & ZIP Code™)	Postage	(Extra Service) Fee	Handling Charge	Actual Value if Registered	Insured Value	Due Sender if COD	ASR Fee	ASRD Fee	RD Fee	RR Fee	SC Fee	SCRD Fee	SH Fee
1. 9214 8901 9403 8304 9515 36	COG Oil & Gas LP One Concho Center 600 W Illinois Avenue Midland TX 79701	0.49	3.45								1.50			
2. 9214 8901 9403 8304 9515 43	Legacy Reserves Operating LP 303 W Wall Street Suite 1800 Midland TX 79701	0.49	3.45								1.50			
3. 9214 8901 9403 8304 9515 50	Lowe Royalty Partners LP 4400 Post Oak Parkway Suite 2150 Houston TX 77027	0.49	3.45								1.50			
4. 9214 8901 9403 8304 9515 67	John Thoma PO BOX 17656 Golden CO 80402	0.49	3.45					Adult Signature Required	Adult Signature Restricted Delivery	Restricted Delivery	Return Receipt	Signature Confirmation	Signature Confirmation Restricted Delivery	Special Handling
5. 9214 8901 9403 8304 9515 74	L E Opperman 1505 Neely Midland TX 79705	0.49	3.45								1.50			
6. 9214 8901 9403 8304 9515 81	Thomas R Smith 5705 Phehurst Farmington NM 87402	0.49	3.45								1.50			
7. 9214 8901 9403 8304 9515 98	Penwell Employee Royalty Pool 2001 N Lorraine St Suite 1550 Midland TX 79701	0.49	3.45	Handling Charge - If Registered and over \$50,000 in value							1.50			
8. 9214 8901 9403 8304 9516 04	James E Geilgey 2407 Bellechase Court Midland TX 79705	0.49	3.45								1.50			

Postmaster, Per (Name of receiving employee)

Total Number of Pieces Listed by Sender: 13  
Total Number of Pieces Received at Post Office: 13







powered by ConnectSuite e-Certify

▲ You are using an old version of e-Certify. [Click here](#) to update to the new version.

Welcome Joanna Garcia, (Not [Joanna Garcia?](#))  
Company:  
Holland & Hart LLP

- Home
- My Queue
- Piece Search
- Support
- Logout

History > [Mail Jobs](#) > [Mail Job Details](#)



### My Tools

- Mail Jobs
- Mail Pieces
- Manual Mailings
- Reports
- Setup
- Account
- Tools

### Mail Pieces

Filter:

< No Filter >

Barcode	Recipient	Status	DL	Custom
9214 8901 9403 8304 9516 59	Sandra M Thoma 8530 Mill Run Road Athens TX 75751	Delivered Signature Received	No	
9214 8901 9403 8304 9516 42	Camerston Family Trust PO BOX 558 Peyton CO 80831	Delivered Signature Received	No	
9214 8901 9403 8304 9516 35	Curtis Anderson 9314 Cherry Brook Lane Frisco TX 75033	Delivered Signature Received	No	
9214 8901 9403 8304 9516 28	C Mark Wheeler 719 W Kansa Avenue Midland TX 79701	In-Transit	No	
9214 8901 9403 8304 9516 11	Paul R Barwis PO BOX 230 Midland TX 79702	Delivered Signature Received	No	
9214 8901 9403 8304 9516 04	James E Geitgey 2407 Bellechase Court Midland TX 79705	In-Transit	No	
9214 8901 9403 8304 9515 98	Penwell Employee Royalty Pool 200 N Loraine St Suite 1550 Midland TX 79701	Delivered Signature Received	No	
9214 8901 9403 8304 9515 81	Thomas R Smith 5705 Pinehurst Farmington NM 87402	Delivered Signature Received	No	
9214 8901 9403 8304 9515 74	L E Opperman 1505 Neely Midland TX 79705	Delivered Signature Received	No	
9214 8901 9403 8304 9515 67	John Thoma PO BOX 17656 Golden CO 80402	Delivered Signature Received	No	
9214 8901 9403 8304 9515 50	Lowe Royalty Partners LP 4400 Post Oak Parkway Suite 2150 Houston TX 77027	In-Transit	No	
9214 8901 9403 8304 9515 43	Legacy Reserves Operating LP 303 W Wall Street Suite 1800 Midland TX 79701	Delivered Signature Received	No	
9214 8901 9403 8304 9515 36	COG Oil & Gas LP One Concho Center 600 W Illinois Avenue Midland TX 79701	Delivered Signature Received	No	

100 items per page



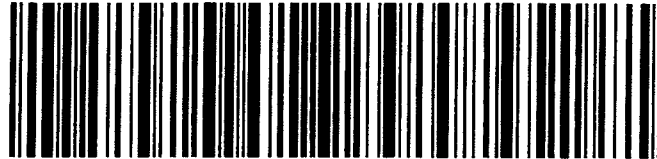
**Return address:**

HOLLAND & HART LLP  
110 N GUADALUPE ST # 1  
SANTA FE, NM 87501

**Recipient address:**

C MARK WHEELER  
719 W KANSA AVENUE  
MIDLAND TX 79701

**USPS CERTIFIED MAIL**



9214 8901 9403 8304 9516 28

**USPS Tracking Label Number: 9214 8901 9403 8304 9516 28**

<b>USPS Tracking History</b>	<b>Postal Facility</b>	<b>ZIP</b>	<b>Date</b>	<b>Time</b>
PRE-SHIPMENT INFO SENT USPS AWAITS ITEM		SANTA FE,NM 87501		03/14/2018 13:54
SHIPMENT RECEIVED ACCEPTANCE PENDING		SANTA FE,NM 87501		03/16/2018 15:06
ORIGIN ACCEPTANCE		SANTA FE,NM 87501		03/16/2018 21:14
PROCESSED THROUGH USPS FACILITY		ALBUQUERQUE,NM 87101		03/16/2018 22:29
DEPART USPS FACILITY		ALBUQUERQUE,NM 87101		03/17/2018 03:06
PROCESSED THROUGH USPS FACILITY		MIDLAND,TX 79711		03/18/2018 16:47
PROCESSED THROUGH USPS FACILITY		MIDLAND,TX 79711		03/19/2018 02:04
DEPART USPS FACILITY		MIDLAND,TX 79711		03/19/2018 05:12

CASE #:



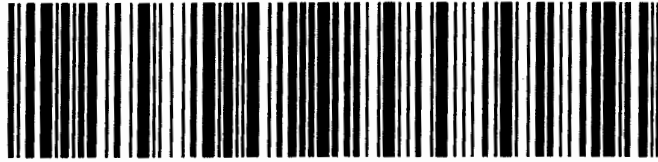
**Return address:**

HOLLAND & HART LLP  
110 N GUADALUPE ST # 1  
SANTA FE, NM 87501

**Recipient address:**

JAMES E GEITGEY  
2407 BELLECHASE COURT  
MIDLAND TX 79705

**USPS CERTIFIED MAIL**



9214 8901 9403 8304 9516 04

**USPS Tracking Label Number: 9214 8901 9403 8304 9516 04**

<b>USPS Tracking History</b>	<b>Postal Facility</b>	<b>ZIP</b>	<b>Date</b>	<b>Time</b>
PRE-SHIPMENT INFO SENT USPS AWAITS ITEM	SANTA FE,NM 87501		03/14/2018	13:54
SHIPMENT RECEIVED ACCEPTANCE PENDING	SANTA FE,NM 87501		03/16/2018	15:06
ORIGIN ACCEPTANCE	SANTA FE,NM 87501		03/16/2018	21:14
PROCESSED THROUGH USPS FACILITY	ALBUQUERQUE,NM 87101		03/16/2018	22:29
DEPART USPS FACILITY	ALBUQUERQUE,NM 87101		03/17/2018	03:06
PROCESSED THROUGH USPS FACILITY	MIDLAND,TX 79711		03/18/2018	16:47
PROCESSED THROUGH USPS FACILITY	MIDLAND,TX 79711		03/19/2018	03:40
DEPART USPS FACILITY	MIDLAND,TX 79711		03/19/2018	05:12
NO AUTHORIZED RECIPIENT AVAILABLE	MIDLAND,TX 79705		03/20/2018	13:23
REMINDER TO SCHEDULE REDELIVERY	MIDLAND,TX 79705		03/25/2018	04:12
PACKAGE RETURN NOTICE GENERATED	MIDLAND,TX 79705		04/04/2018	04:28

CASE #:



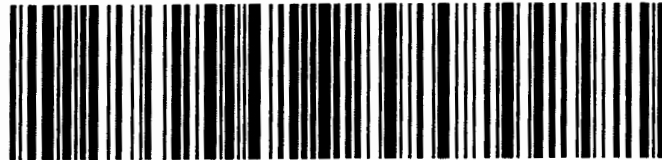
**Return address:**

HOLLAND & HART LLP  
110 N GUADALUPE ST # 1  
SANTA FE, NM 87501

**Recipient address:**

LOWE ROYALTY PARTNERS LP  
4400 POST OAK PARKWAY SUITE 2150  
HOUSTON TX 77027

**USPS CERTIFIED MAIL**



9214 8901 9403 8304 9515 50

**USPS Tracking Label Number: 9214 8901 9403 8304 9515 50**

<b>USPS Tracking History</b>	<b>Postal Facility</b>	<b>ZIP</b>	<b>Date</b>	<b>Time</b>
PRE-SHIPMENT INFO SENT USPS AWAITS ITEM		SANTA FE,NM 87501		03/14/2018 13:54
SHIPMENT RECEIVED ACCEPTANCE PENDING		SANTA FE,NM 87501		03/16/2018 15:06
ORIGIN ACCEPTANCE		SANTA FE,NM 87501		03/16/2018 21:14
PROCESSED THROUGH USPS FACILITY		ALBUQUERQUE,NM 87101		03/16/2018 22:29
DEPART USPS FACILITY		ALBUQUERQUE,NM 87101		03/17/2018 03:06
PROCESSED THROUGH USPS FACILITY		NORTH HOUSTON,TX 77315		03/18/2018 13:56
ARRIVAL AT UNIT		HOUSTON,TX 77027		03/19/2018 07:36
SORTING/PROCESSING COMPLETE		HOUSTON,TX 77027		03/19/2018 10:26
OUT FOR DELIVERY		HOUSTON,TX 77027		03/19/2018 10:36
DELIVERY STATUS NOT UPDATED		HOUSTON,TX 77027		03/20/2018 00:36
PROCESSED THROUGH USPS FACILITY		NORTH HOUSTON,TX 77315		03/30/2018 08:21
PROCESSED THROUGH USPS FACILITY		ALBUQUERQUE,NM 87101		04/01/2018 12:19

CASE #:

HOLLAND & HART<sup>LLP</sup>



**Michael H. Feldewert**  
Recognized Specialist in the  
Area of Natural Resources - Oil  
and Gas Law - New Mexico  
Board of Legal Specialization  
mfeldewert@hollandhart.com

March 16, 2018

**VIA CERTIFIED MAIL**  
**RETURN RECEIPT REQUESTED**

**TO: OFFSETTING LESSEES AND OPERATORS**

**Re: Application of OXY USA Inc. for alternative non-standard spacing and proration units, approval of a non-standard project area as needed and compulsory pooling, Eddy County, New Mexico.  
Corral Fly "35-26" Federal Com No. 21H Well**

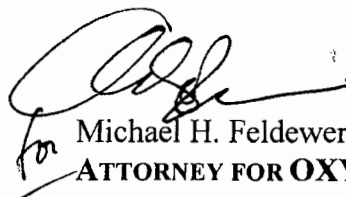
This letter is to advise you that OXY USA Inc. has filed the enclosed application with the New Mexico Oil Conservation Division. *Your interests are not being pooled under this application*, but as a lessee or operator in an offsetting tract, you are entitled to notice of this application.

This application has been set for hearing before a Division Examiner at 8:15 AM on April 5, 2018. The hearing will be held in Porter Hall in the Oil Conservation Division's Santa Fe Offices located at 1220 South Saint Francis Drive, Santa Fe, New Mexico 87505. You are not required to attend this hearing, but as an owner of an interest that may be affected by this application, you may appear and present testimony. Failure to appear at that time and become a party of record will preclude you from challenging the matter at a later date.

Parties appearing in cases are required by Division Rule 19.15.4.13.B to file a Pre-Hearing Statement with the Oil Conservation Division's Santa Fe office, four business days in advance of a scheduled hearing, but at least on the Thursday preceding the hearing. This statement must include: the names of the parties and their attorneys; a concise statement of the case; the names of all witnesses the party will call to testify at the hearing; the approximate time the party will need to present its case; and identification of any procedural matters that are to be resolved prior to the hearing.

If you have any questions about this matter please contact Jeremy Murphrey, at (713) 350-4816 or [Jeremy\\_Murphrey@oxy.com](mailto:Jeremy_Murphrey@oxy.com).

Sincerely,



for Michael H. Feldewert  
ATTORNEY FOR OXY USA INC.

Holland & Hart LLP

Phone [505] 988-4421 Fax [505] 983-6043 [www.hollandhart.com](http://www.hollandhart.com)

110 North Guadalupe Suite 1 Santa Fe, New Mexico 87501 Mailing Address P.O. Box 2208 Santa Fe, NM 87504-2208



# Shipment Confirmation Acceptance Notice

## A. Mailer Action

**Note to Mailer:** The labels and volume associated to this form online, **must** match the labeled packages being presented to the USPS® employee with this form.

2018-03-16 Oxy-Corral Fly 21H  
add parties from 22&23 Offset List  
Case No. 16057

Shipment Date: 03/14/2018

Shipped From:

Name: HOLLAND & HART LLP

Address: 110 N GUADALUPE ST # 1

City: SANTA FE

State: NM ZIP+4® 87501

Type of Mail	Volume
Priority Mail Express®	
Priority Mail®	0
First-Class Package Service®	
Returns	
International*	
Other	2
Total	2

\*Start time for products with service guarantees will begin when mail arrives at the local Post Office™ and items receive individual processing and acceptance scans.

## B. USPS Action

Note to RSS Clerk:

1. Home screen > Mailing/Shipping > More
2. Select Shipment Confirm
3. Scan or enter the barcode/label number from PS Form 5630
4. Confirm the volume count message by selecting Yes or No
5. Select Pay and End Visit to complete transaction

USPS EMPLOYEE: Please scan upon pickup or receipt of mail.  
Leave form with customer or in customer's mail receptacle.

USPS SCAN AT ACCEPTANCE



9275 0901 1935 6200 0007 5762 31





UNITED STATES  
POSTAL SERVICE®

**Firm Mailing Book For Accountable Mail**

Name and Address of Sender

Holland & Hart LLP  
110 N Guadalupe St # 1  
Santa Fe NM 87501

Check type of mail or service

- Adult Signature Required
- Adult Signature Restricted Delivery
- Certified Mail
- Certified Mail Restricted Delivery
- Collect on Delivery (COD)
- Insured Mail
- Priority Mail
- Priority Mail Express
- Registered Mail
- Return Receipt for Merchandise
- Signature Confirmation
- Signature Confirmation Restricted Delivery

USPS Tracking/Article Number

Addressee (Name, Street, City, State, & ZIP Code™)

1. 9214 8901 9403 8304 9537 69

Chevron USA Inc 1403 Smith Street Houston TX 77002

2. 9214 8901 9403 8304 9537 76

XTO Energy Inc 810 Houston Street Fort Worth TX 76102

**Affix Stamp Here**

(if issued as an international certificate of mailing or for additional copies of this receipt).  
**Postmark with Date of Receipt.**

Postage	(Extra Service) Fee	Handling Charge	Actual Value if Registered	Insured Value	Due Sender if COD	ASR Fee	ASRD Fee	RD Fee	RR Fee	SC Fee	SCRD Fee	SH Fee
0.49	3.45								1.50			
0.49	3.45	Handling Charge - if Registered and over \$50,000 in value				Adult Signature Required	Adult Signature Restricted Delivery	Restricted Delivery	Return Receipt	Signature Confirmation	Signature Confirmation Restricted Delivery	Special Handling

Total Number of Pieces listed by Sender  
2

Total Number of Pieces Received at Post Office  
2

Postmaster, Per (Name of receiving employee)



powered by ConnectSuite e-Certify

You are using an old version of e-Certify. [Click here](#) to update to the new version.

Welcome Joanna Garcia. (Not [Joanna Garcia?](#))  
Company:  
Holland & Hart LLP

- Home
- My Queue
- Piece Search
- Support
- Logout

< History > [Mail Jobs](#) > [Mail Job Details](#)



My Tools

Mail Jobs

Mail Pieces

Manual Mailings

Reports

Setup

Account

Tools

Mail Pieces

Filter:

< No Filter >

	Barcode	Recipient	Status	DL	Custom
	9214 8901 9403 8304 9537 76	XTO Energy Inc 810 Houston Street Fort Worth TX 76102	Delivered Signature Received	No	
	9214 8901 9403 8304 9537 69	Chevron USA Inc 1400 Smith Street Houston TX 77002	Delivered Signature Received	No	

© 2018 ConnectSuite e-Certify  
All rights reserved.



HOLLAND & HART<sup>LLP</sup>



**Michael H. Feldewert**  
Recognized Specialist in the  
Area of Natural Resources - Oil  
and Gas Law - New Mexico  
Board of Legal Specialization  
mfeldewert@hollandhart.com

March 16, 2018

**VIA CERTIFIED MAIL**  
**RETURN RECEIPT REQUESTED**

**TO: OFFSETTING LESSEES AND OPERATORS**

**Re: Application of OXY USA Inc. for a non-standard spacing and proration unit  
and compulsory pooling, Eddy County, New Mexico.  
Corral Fly "35-26" Federal Com Nos. 22H and 23H Wells**

This letter is to advise you that OXY USA Inc. has filed the enclosed application with the New Mexico Oil Conservation Division. *Your interests are not being pooled under this application*, but as a lessee or operator in an offsetting tract, you are entitled to notice of this application.

This application has been set for hearing before a Division Examiner at 8:15 AM on April 5, 2018. The hearing will be held in Porter Hall in the Oil Conservation Division's Santa Fe Offices located at 1220 South Saint Francis Drive, Santa Fe, New Mexico 87505. You are not required to attend this hearing, but as an owner of an interest that may be affected by this application, you may appear and present testimony. Failure to appear at that time and become a party of record will preclude you from challenging the matter at a later date.

Parties appearing in cases are required by Division Rule 19.15.4.13.B to file a Pre-Hearing Statement with the Oil Conservation Division's Santa Fe office, four business days in advance of a scheduled hearing, but at least on the Thursday preceding the hearing. This statement must include: the names of the parties and their attorneys; a concise statement of the case; the names of all witnesses the party will call to testify at the hearing; the approximate time the party will need to present its case; and identification of any procedural matters that are to be resolved prior to the hearing.

If you have any questions about this matter please contact Jeremy Murphrey, at (713) 350-4816 or [Jeremy\\_Murphrey@oxy.com](mailto:Jeremy_Murphrey@oxy.com).

Sincerely,

Michael H. Feldewert  
ATTORNEY FOR OXY USA INC.

Holland & Hart LLP

Phone [505] 988-4421 Fax [505] 983-6043 [www.hollandhart.com](http://www.hollandhart.com)

110 North Guadalupe Suite 1 Santa Fe, New Mexico 87501 Mailing Address P.O. Box 2208 Santa Fe, NM 87504-2208

Arden, Boulder, Carson City, Colorado Springs, Denver, Denver Tech Center, Billings, Boise, Cheyenne, Dallas, Denver, Durango, El Paso, Fort Collins, Grand Junction, Houston, Las Vegas, Littleton, Phoenix, Salt Lake City, San Antonio, San Diego, San Francisco, Seattle, Tucson, Wichita



# Shipment Confirmation Acceptance Notice

## A. Mailer Action

**Note to Mailer:** The labels and volume associated to this form online, **must** match the labeled packages being presented to the USPS® employee with this form.

2018-03-16 OXY-Corral Fly 22H & 23H Offset List -  
Case No. 16059

Shipment Date: 03/14/2018

Shipped From:

Name: HOLLAND & HART LLP

Address: 110 N GUADALUPE ST # 1

City: SANTA FE

State: NM ZIP+4® 87501

Type of Mail	Volume
Priority Mail Express®*	
Priority Mail®	0
First-Class Package Service®	
Returns	
International*	
Other	23
Total	23

\*Start time for products with service guarantees will begin when mail arrives at the local Post Office™ and items receive individual processing and acceptance scans.

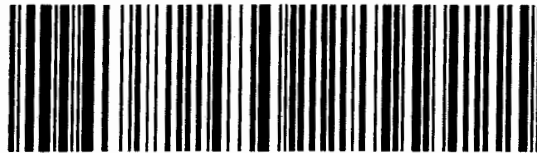
## B. USPS Action

Note to RSS Clerk:

1. Home screen > Mailing/Shipping > More
2. Select Shipment Confirm
3. Scan or enter the barcode/label number from PS Form 5630
4. Confirm the volume count message by selecting Yes or No
5. Select Pay and End Visit to complete transaction

USPS EMPLOYEE: Please scan upon pickup or receipt of mail.  
Leave form with customer or in customer's mail receptacle.

USPS SCAN AT ACCEPTANCE



9275 0901 1935 6200 0007 5757 15





**Firm Mailing Book For Accountable Mail**

Name and Address of Sender

Holland & Hart LLP  
110 N Guadalupe St # 1  
Santa Fe NM 87501

Check type of mail or service

- Adult Signature Required
- Adult Signature Restricted Delivery
- Certified Mail
- Certified Mail Restricted Delivery
- Collect on Delivery (COD)
- Insured Mail
- Priority Mail
- Priority Mail Express
- Registered Mail
- Return Receipt for Merchandise
- Signature Confirmation
- Signature Confirmation Restricted Delivery

**Affix Stamp Here**  
*(if issued as an international certificate of mailing or for additional copies of this receipt).*  
**Postmark with Date of Receipt.**

USPS Tracking/Article Number	Addressee (Name, Street, City, State, & ZIP Code™)	Postage	(Extra Service) Fee	Handling Charge	Actual Value if Registered	Insured Value	Due Sender if COD	ASR Fee	ASRD Fee	RD Fee	RR Fee	SC Fee	SCRD Fee	SH Fee
1. 9214 8901 9403 8304 9526 25	KONA Ltd 816 Congress Ave Suite 1130 Austin TX 78701	0.49	3.45								1.50			
2. 9214 8901 9403 8304 9526 32	COG Oil & Gas LP One Concho Center 600 W Illinois Avenue Midland TX 79701	0.49	3.45								1.50			
3. 9214 8901 9403 8304 9526 49	Eleven Sands Exploration Inc PO BOX 3366 Edmond OK 73083	0.49	3.45								1.50			
4. 9214 8901 9403 8304 9526 56	Edward K Gaylord II PO BOX 3366 Edmond OK 73083	0.49	3.45								1.50			
5. 9214 8901 9403 8304 9526 63	Bureau of Land Management 620 E Greene Street Carlsbad NM 88220	0.49	3.45								1.50			
6. 9214 8901 9403 8304 9526 70	New Mexico State Land Office 310 Old Santa Fe Trail Santa Fe NM 87504	0.49	3.45								1.50			
7. 9214 8901 9403 8304 9526 87	George Scott Cranford 2009 Hubbard Court Villa Rica GA 30180	0.49	3.45								1.50			
8. 9214 8901 9403 8304 9526 94	Britt P and Cystine Meeford 2111 Palsano Road Austin TX 78746	0.49	3.45								1.50			

Total Number of Pieces Listed by Sender: **23**  
Total Number of Pieces Received at Post Office: **23**  
Postmaster, Per (Name of receiving employee):



**Firm Mailing Book For Accountable Mail**

Name and Address of Sender		Check type of mail or service		Affix Stamp Here (if issued as an international certificate of mailing or for additional copies of this receipt). Postmark with Date of Receipt.													
USPS Tracking/Article Number		Addressee (Name, Street, City, State, & ZIP Code™)		Postage	(Extra Service) Fee	Handling Charge	Actual Value if Registered	Insured Value	Due Sender if COD	ASR Fee	ASRD Fee	RD Fee	RR Fee	SC Fee	SCRD Fee	SH Fee	
9.	9214 8901 9403 8304 9527 00	Holland & Hart LLP 110 N Guadalupe St # 1 Santa Fe NM 87501	<input type="checkbox"/> Adult Signature Required <input type="checkbox"/> Adult Signature Restricted Delivery <input checked="" type="checkbox"/> Certified Mail <input type="checkbox"/> Certified Mail Restricted Delivery <input type="checkbox"/> Collect on Delivery (COD) <input type="checkbox"/> Insured Mail <input type="checkbox"/> Priority Mail <input type="checkbox"/> Priority Mail Express <input type="checkbox"/> Registered Mail <input type="checkbox"/> Return Receipt for Merchandise <input type="checkbox"/> Signature Confirmation <input type="checkbox"/> Signature Confirmation Restricted Delivery	0.49	3.45								1.50				
10.	9214 8901 9403 8304 9527 17	Jen Alice Herstrom 610 Forest Oaks Circle Woodway TX 76712		0.49	3.45								1.50				
11.	9214 8901 9403 8304 9527 24	Twin Oaks Petroleum LLC 7038 Chimney Hill Drive Nolenville TX 76569		0.49	3.45								1.50				
12.	9214 8901 9403 8304 9527 31	Robert and Brenda K. Patton 1007 Hidalgo Road Carlsbad NM 88220		0.49	3.45								1.50				
13.	9214 8901 9403 8304 9527 48	Margaret and Raymond H McDonald Jr 1379 County Road 3566 Dike TX 75437		0.49	3.45								1.50				
14.	9214 8901 9403 8304 9527 55	Lonny Ray McDonald 5505 Sioux Road Carlsbad NM 88220		0.49	3.45								1.50				
15.	9214 8901 9403 8304 9527 62	Glen E and Barbara McDonald PO BOX 367 Loving NM 88256		0.49	3.45								1.50				
16.	9214 8901 9403 8304 9527 79	David H and Vicki McDonald PO BOX 308 Loving NM 88256-0308		0.49	3.45								1.50				
Total Number of Pieces Listed by Sender		Postmaster, Per (Name of receiving employee)		Handling Charge - If Registered and over \$50,000 in value													
23																	



**Firm Mailing Book For Accountable Mail**

Name and Address of Sender  
**Holland & Hart LLP**  
**110 N Guadalupe St # 1**  
**Santa Fe NM 87501**

Check type of mail or service  
 Adult Signature Required  
 Adult Signature Restricted Delivery  
 Certified Mail  
 Certified Mail Restricted Delivery  
 Collect on Delivery (COD)  
 Insured Mail  
 Priority Mail

Priority Mail Express  
 Registered Mail  
 Return Receipt for Merchandise  
 Signature Confirmation  
 Signature Confirmation Restricted Delivery

**Affix Stamp Here**  
*(if issued as an international certificate of mailing or for additional copies of this receipt).*  
**Postmark with Date of Receipt.**

USPS Tracking/Article Number	Addressee (Name, Street, City, State, & ZIP Code™)	Postage	(Extra Service) Fee	Handling Charge	Actual Value if Registered	Insured Value	Due Sender if COD	ASR Fee	ASRD Fee	RD Fee	RR Fee	SC Fee	SCRD Fee	SH Fee
17. 9214 8901 9403 8304 9527 86	Erich Henry McDonald a/k/a Henry E McDonald PO BOX 597 Loving NM 88236	0.49	3.45								1.50			
18. 9214 8901 9403 8304 9527 93	Rebecca G Hooks PO BOX 111 Waring TX 78074	0.49	3.45								1.50			
19. 9214 8901 9403 8304 9528 09	Micaella Gaines Klapuch PO BOX 227 Wimberly TX 78676	0.49	3.45								1.50			
20. 9214 8901 9403 8304 9528 16	Robert E Gaines Jr PO BOX 105 Waring TX 78074	0.49	3.45								1.50			
21. 9214 8901 9403 8304 9528 23	Mary Martha Gaines England PO BOX 541861 Grand Prairie TX 75054	0.49	3.45								1.50			
22. 9214 8901 9403 8304 9528 30	Vanguard Operating LLC 5847 San Felipe Suite 3000 Houston TX 77057	0.49	3.45								1.50			
23. 9214 8901 9403 8304 9528 47	Larry Ray McDonald 5505 Sioux Road Carlsbad NM 88220	0.49	3.45								1.50			
Total Number of Pieces Listed by Sender 23		Postmaster, Per (Name of receiving employee)												
Total Number of Pieces Received at Post Office 23		Handling Charge - If Registered and over \$50,000 in value												
		Adult Signature Required												
		Adult Signature Restricted Delivery												
		Restricted Delivery												
		Return Receipt												
		Signature Confirmation												
		Signature Confirmation Restricted Delivery												



⚠ You are using an old version of e-Certify. [Click here](#) to update to the new version.

Welcome Joanna Garcia, (Not [Joanno Garcia?](#))  
Company:  
Holland & Hart LLP

- Home
- My Queue
- Piece Search
- Support
- Logout

History > [Mail Jobs](#) > [Mail Job Details](#)



My Tools

Mail Jobs

Mail Pieces

Manual Mailings

Reports

Setup

Account

Tools

Mail Pieces

Filter:

< No Filter >

Barcode	Recipient	Status	DL	Custom
9214 8901 9403 8304 9528 47	Larry Ray McDonald 5505 Sioux Road Carlsbad NM 88220	Delivered Signature Received	No	
9214 8901 9403 8304 9528 30	Vanguard Operating LLC 5847 San Felipe Suite 3000 Houston TX 77057	Delivered Signature Received	No	
9214 8901 9403 8304 9528 23	Mary Martha Gaines England PO BOX 541661 Grand Prairie TX 75054	In-Transit	No	
9214 8901 9403 8304 9528 16	Robert E Gaines Jr PO BOX 105 Waring TX 78074	Delivered Signature Received	No	
9214 8901 9403 8304 9528 09	Micaella Gaines Klapuch PO BOX 227 Wimberly TX 78676	Delivered Signature Received	No	
9214 8901 9403 8304 9527 93	Rebecca G Hooks PO BOX 111 Waring TX 78074	Delivered Signature Received	No	
9214 8901 9403 8304 9527 86	Enrich Henry McDonald a/k/a Henry E McDonald PO BOX 597 Loving NM 88256	Delivered Signature Received	No	
9214 8901 9403 8304 9527 79	David H and Vicki McDonald PO BOX 308 Loving NM 88256-0308	In-Transit	No	
9214 8901 9403 8304 9527 62	Glen E and Barbara McDonald PO BOX 367 Loving NM 88256	Delivered Signature Received	No	
9214 8901 9403 8304 9527 55	Lonny Ray McDonald 5505 Sioux Road Carlsbad NM 88220	Delivered Signature Received	No	
9214 8901 9403 8304 9527 48	Margaret and Raymond H McDonald Jr 1379 County Road 3566 Dike TX 75437	Delivered Signature Received	No	
9214 8901 9403 8304 9527 31	Robert and Brenda K Patton 1007 Hidalgo Road Carlsbad NM 88220	In-Transit	No	
9214 8901 9403 8304 9527 24	Twin Oaks Petroleum LLC 7038 Chimney Hill Drive Nolanville TX 76559	Delivered Signature Received	No	
9214 8901 9403 8304 9527 17	Jan Alice Herstrom 810 Forest Oaks Circle Woodway TX 76712	Delivered Signature Received	No	
9214 8901 9403 8304 9527 00	Jack Scott and Sandra McDonald 1110 College Avenue Snyder TX 79549	Delivered Signature Received	No	

4/4/2018

ConnectSuite e-Certify

Barcode	Recipient	Status	DL	Custom
9214 8901 9403 8304 9526 94	Britt P and Cydney Medford 2111 Paisano Road Austin TX 78746	Delivered Signature Received	No	
9214 8901 9403 8304 9526 87	George Scott Cranford 2009 Hubbard Court Villo Rica GA 30180	Delivered Signature Received	No	
9214 8901 9403 8304 9526 70	New Mexico State Land Office 310 Old Santa Fe Trail Santa Fe NM 87504	Delivered Signature Received	No	
9214 8901 9403 8304 9526 63	Bureau of Land Management 620 E Greene Street Carlsbad NM 88220	Delivered Signature Received	No	
9214 8901 9403 8304 9526 56	Edward K Gaylord II PO BOX 3366 Edmond OK 73083	Delivered Signature Received	No	
9214 8901 9403 8304 9526 49	Eleven Sands Exploration Inc PO BOX 3366 Edmond OK 73083	Delivered Signature Received	No	
9214 8901 9403 8304 9526 32	COG Oil & Gas LP One Concho Center 600 W Illinois Avenue Midland TX 79701	Delivered Signature Received	No	
9214 8901 9403 8304 9526 25	KONA Ltd 816 Congress Ave Suite 1130 Austin TX 78701	In-Transit	No	



100 items per page



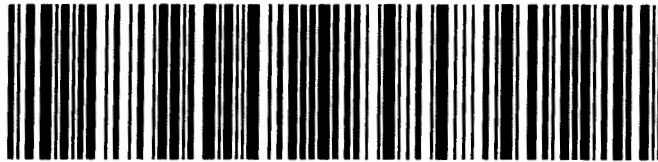
**Return address:**

HOLLAND & HART LLP  
110 N GUADALUPE ST # 1  
SANTA FE, NM 87501

**Recipient address:**

MARY MARTHA GAINES ENGLAND  
PO BOX 541661  
GRAND PRAIRIE TX 75054

**USPS CERTIFIED MAIL**



9214 8901 9403 8304 9528 23

**USPS Tracking Label Number: 9214 8901 9403 8304 9528 23**

<b>USPS Tracking History</b>	<b>Postal Facility</b>	<b>ZIP</b>	<b>Date</b>	<b>Time</b>
PRE-SHIPMENT INFO SENT USPS AWAITS ITEM		SANTA FE,NM 87501		03/14/2018 14:07
SHIPMENT RECEIVED ACCEPTANCE PENDING		SANTA FE,NM 87501		03/16/2018 15:06
ORIGIN ACCEPTANCE		SANTA FE,NM 87501		03/16/2018 21:14
PROCESSED THROUGH USPS FACILITY		ALBUQUERQUE,NM 87101		03/16/2018 22:29
DEPART USPS FACILITY		ALBUQUERQUE,NM 87101		03/17/2018 03:06
PROCESSED THROUGH USPS FACILITY		COPPELL,TX 75099		03/18/2018 07:13
DEPART USPS FACILITY		COPPELL,TX 75099		03/19/2018 01:53
AVAILABLE FOR PICKUP		GRAND PRAIRIE, TX 75054		03/19/2018 10:25
REMINDER TO SCHEDULE REDELIVERY		GRAND PRAIRIE, TX 75054		03/24/2018 03:35
PACKAGE RETURN NOTICE GENERATED		GRAND PRAIRIE, TX 75054		04/03/2018 03:02

CASE #:





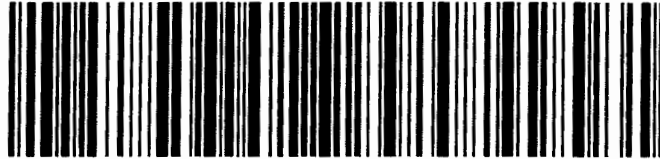
**Return address:**

HOLLAND & HART LLP  
110 N GUADALUPE ST # 1  
SANTA FE, NM 87501

**Recipient address:**

DAVID H AND VICKI MCDONALD  
PO BOX 308  
LOVING NM 88256-0308

**USPS CERTIFIED MAIL**



9214 8901 9403 8304 9527 79

**USPS Tracking Label Number: 9214 8901 9403 8304 9527 79**

USPS Tracking History	Postal Facility	ZIP	Date	Time
PRE-SHIPMENT INFO SENT USPS AWAITS ITEM		SANTA FE,NM 87501		03/14/2018 14:07
SHIPMENT RECEIVED ACCEPTANCE PENDING		SANTA FE,NM 87501		03/16/2018 15:06
ORIGIN ACCEPTANCE		SANTA FE,NM 87501		03/16/2018 21:14
PROCESSED THROUGH USPS FACILITY		ALBUQUERQUE,NM 87101		03/16/2018 22:29
DEPART USPS FACILITY		ALBUQUERQUE,NM 87101		03/17/2018 03:06
PROCESSED THROUGH USPS FACILITY		LUBBOCK,TX 79402		03/18/2018 06:56
DEPART USPS FACILITY		LUBBOCK,TX 79402		03/19/2018 05:00
ARRIVAL AT UNIT		LOVING,NM 88256		03/19/2018 10:17
FORWARDED		LOVING,NM 88256		03/19/2018 11:08
PROCESSED THROUGH USPS FACILITY		COPPELL,TX 75099		03/23/2018 09:06
DEPART USPS FACILITY		COPPELL,TX 75099		03/23/2018 22:06
PROCESSED THROUGH USPS FACILITY		COPPELL,TX 75099		03/24/2018 22:36
PROCESSED THROUGH USPS FACILITY		LUBBOCK,TX 79402		03/30/2018 09:05
PROCESSED THROUGH USPS FACILITY		LUBBOCK,TX 79402		04/01/2018 03:27
ARRIVAL AT UNIT		LOVING,NM 88256		04/02/2018 10:50
INSUFFICIENT ADDRESS		LOVING,NM 88256		04/02/2018 10:55

CASE #:



**Return address:**

HOLLAND & HART LLP  
110 N GUADALUPE ST # 1  
SANTA FE, NM 87501

**Recipient address:**

ROBERT AND BRENDA K PATTON  
1007 HIDALGO ROAD  
CARLSBAD NM 88220

**USPS CERTIFIED MAIL**



9214 8901 9403 8304 9527 31

**USPS Tracking Label Number: 9214 8901 9403 8304 9527 31**

<b>USPS Tracking History</b>	<b>Postal Facility</b>	<b>ZIP</b>	<b>Date</b>	<b>Time</b>
PRE-SHIPMENT INFO SENT USPS AWAITS ITEM		SANTA FE,NM 87501		03/14/2018 14:07
SHIPMENT RECEIVED ACCEPTANCE PENDING		SANTA FE,NM 87501		03/16/2018 15:06
ORIGIN ACCEPTANCE		SANTA FE,NM 87501		03/16/2018 21:14
PROCESSED THROUGH USPS FACILITY		ALBUQUERQUE,NM 87101		03/16/2018 22:29
DEPART USPS FACILITY		ALBUQUERQUE,NM 87101		03/17/2018 03:06
PROCESSED THROUGH USPS FACILITY		ALBUQUERQUE,NM 87101		03/17/2018 13:20
PROCESSED THROUGH USPS FACILITY		ALBUQUERQUE,NM 87101		03/18/2018 15:54

CASE #:



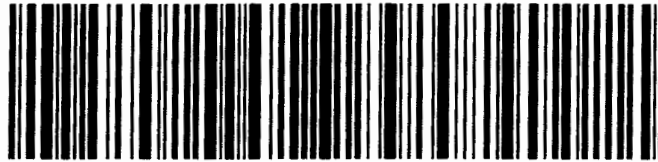
**Return address:**

HOLLAND & HART LLP  
110 N GUADALUPE ST # 1  
SANTA FE, NM 87501

**Recipient address:**

KONA LTD  
816 CONGRESS AVE SUITE 1130  
AUSTIN TX 78701

**USPS CERTIFIED MAIL**



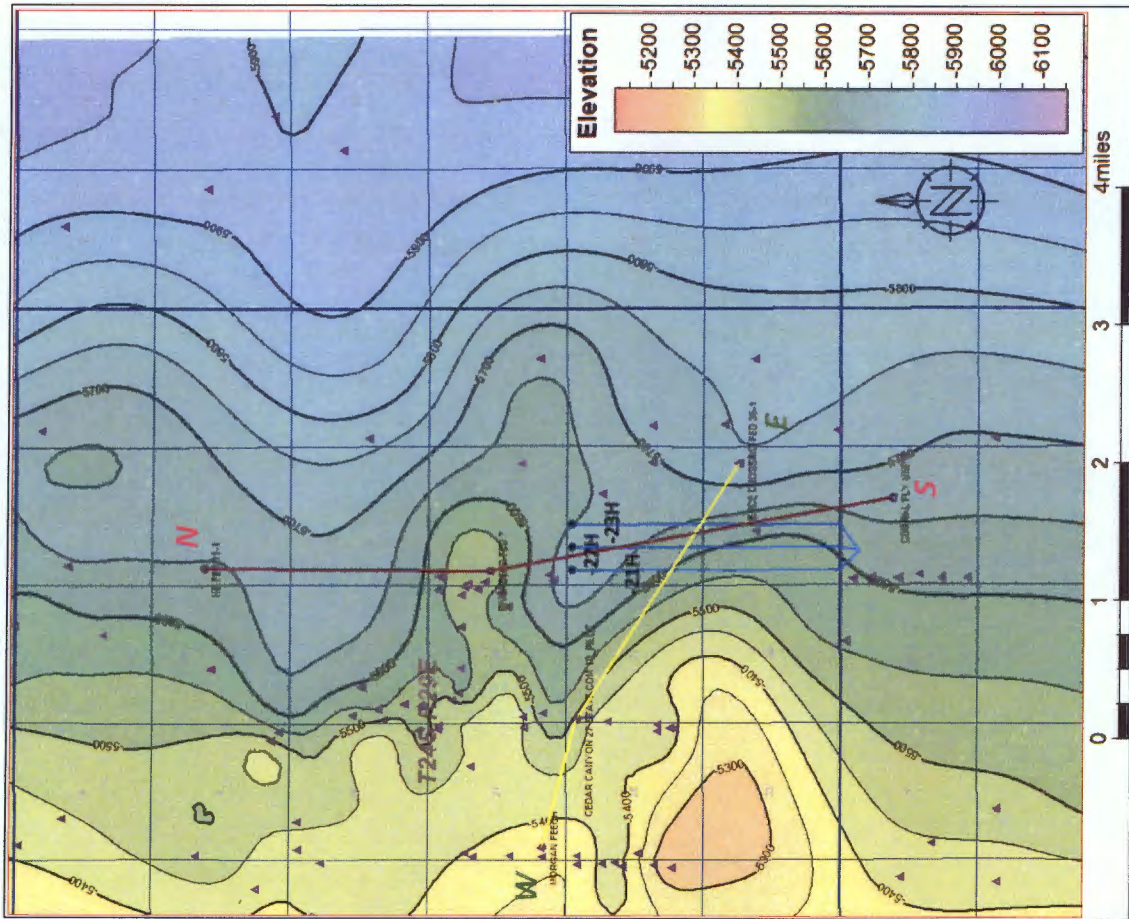
9214 8901 9403 8304 9526 25

**USPS Tracking Label Number: 9214 8901 9403 8304 9526 25**

<b>USPS Tracking History</b>	<b>Postal Facility</b>	<b>ZIP</b>	<b>Date</b>	<b>Time</b>
PRE-SHIPMENT INFO SENT USPS AWAITS ITEM		SANTA FE,NM 87501		03/14/2018 14:07
SHIPMENT RECEIVED ACCEPTANCE PENDING		SANTA FE,NM 87501		03/16/2018 15:06
ORIGIN ACCEPTANCE		SANTA FE,NM 87501		03/16/2018 21:14
PROCESSED THROUGH USPS FACILITY		ALBUQUERQUE,NM 87101		03/16/2018 22:29
DEPART USPS FACILITY		ALBUQUERQUE,NM 87101		03/17/2018 03:06
PROCESSED THROUGH USPS FACILITY		ALBUQUERQUE,NM 87101		03/17/2018 13:20
PROCESSED THROUGH USPS FACILITY		ALBUQUERQUE,NM 87101		03/18/2018 15:54

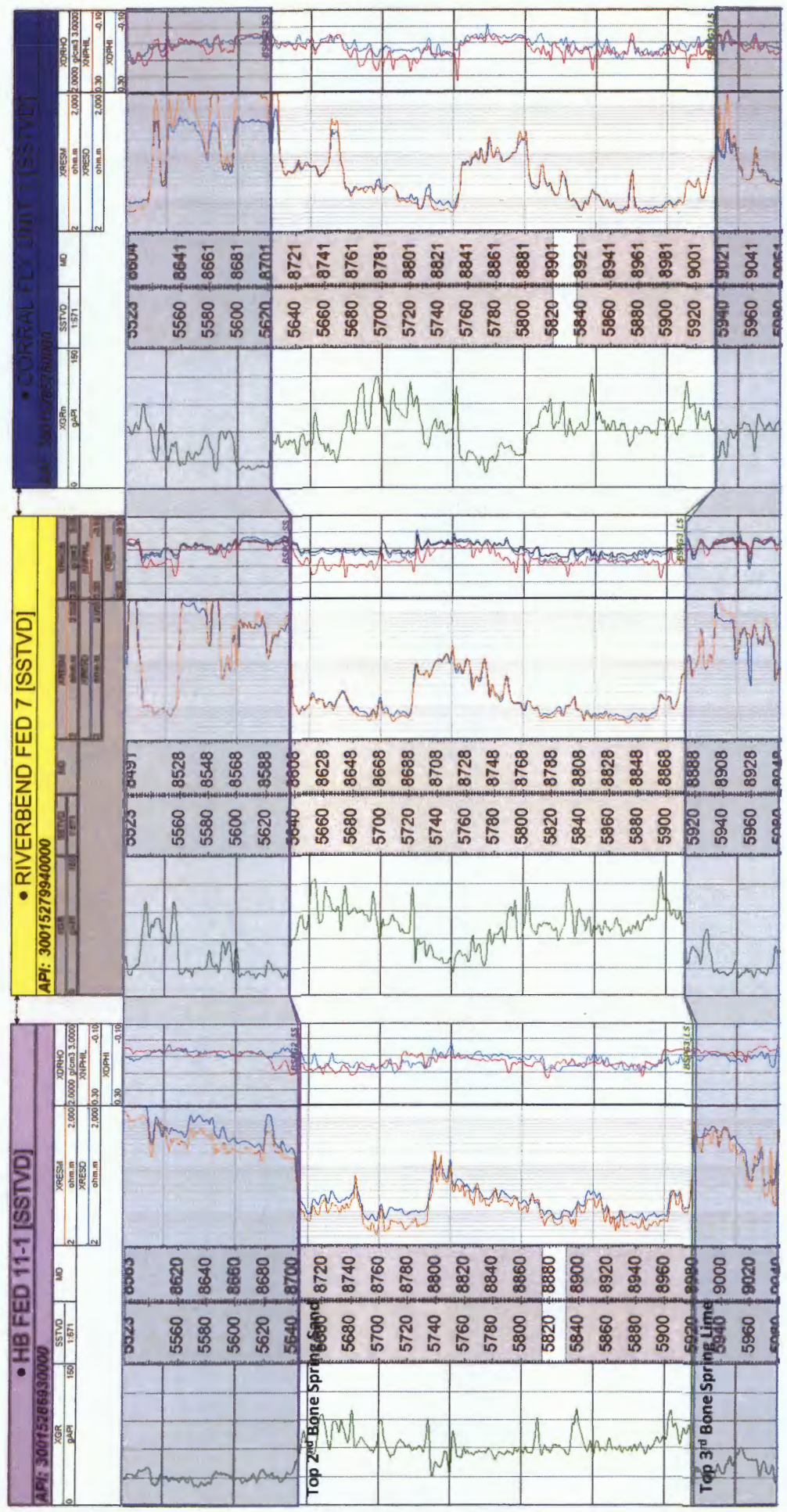
CASE #:

**Corral Fly 35-26 Area**  
 Top of 2<sup>nd</sup> Bone Spring Sand

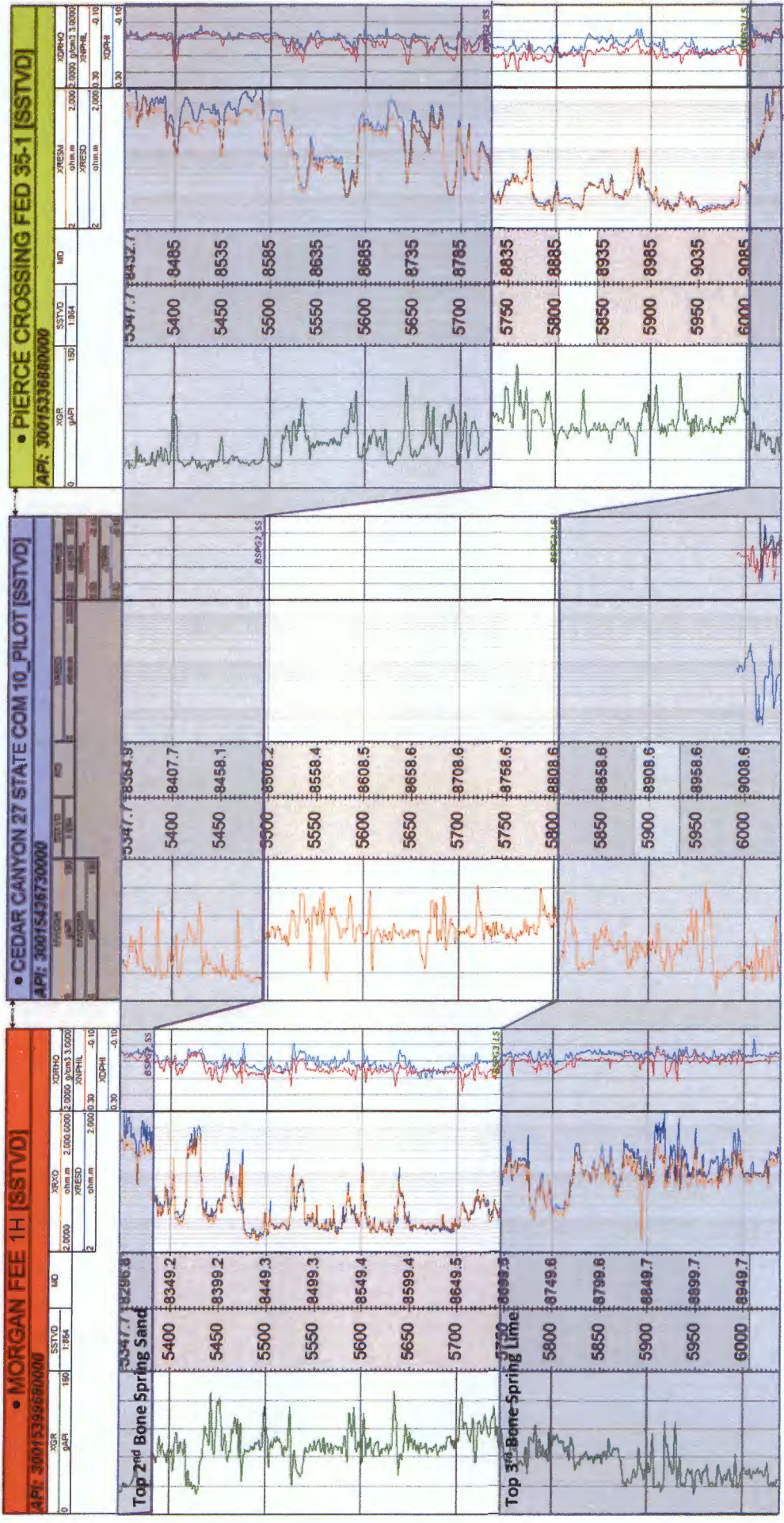


▲ Structural Control Points

**Corral Fly 35-26 Area**  
North to South Structural Cross Section



**Corral Fly 35-26 Area**  
West to East Structural Cross Section



**E**