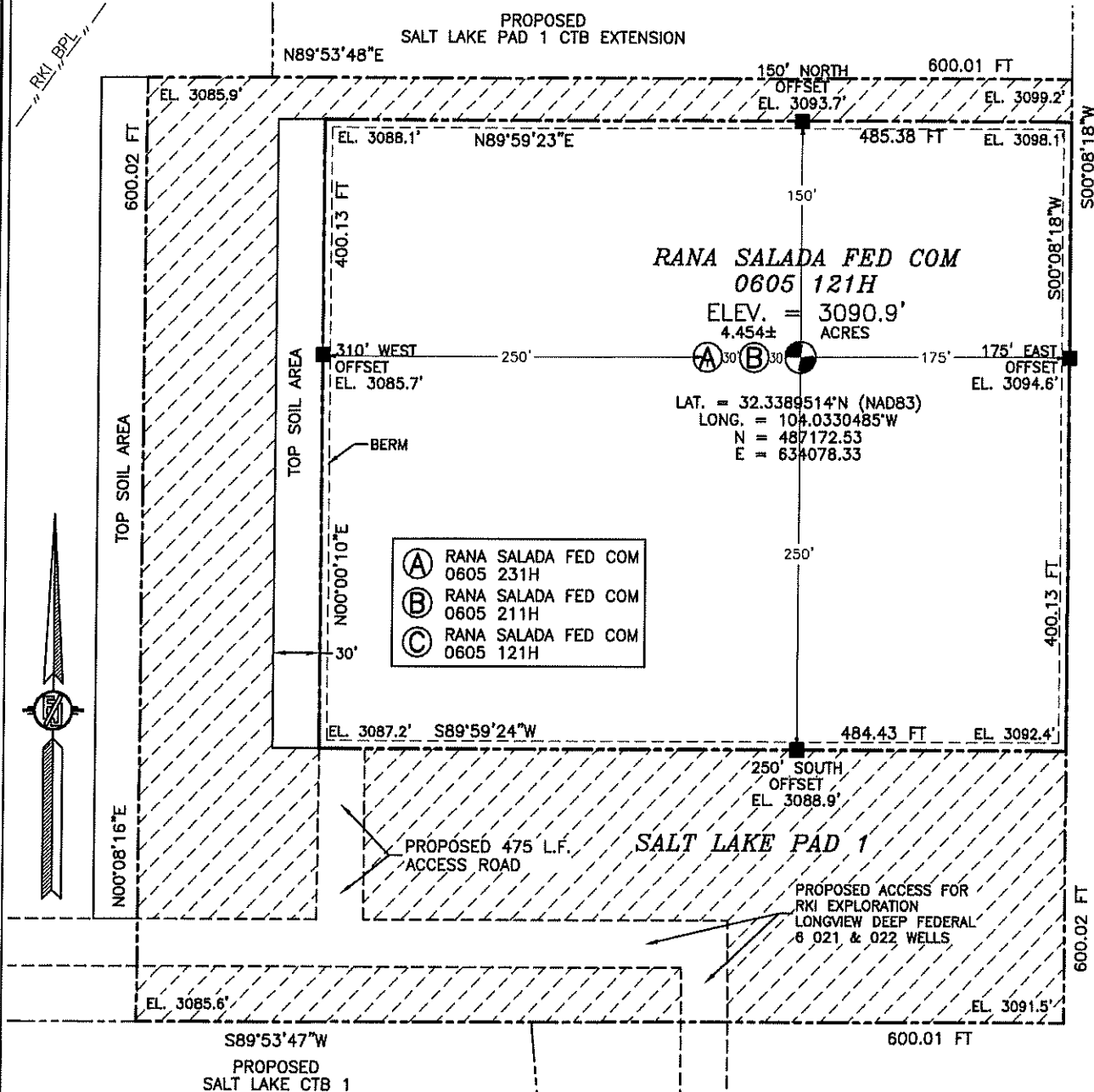


SURVEY NO. 6145B

**SECTION 1, TOWNSHIP 23 SOUTH, RANGE 28 EAST, N.M.P.M.
EDDY COUNTY, STATE OF NEW MEXICO
SITE MAP**



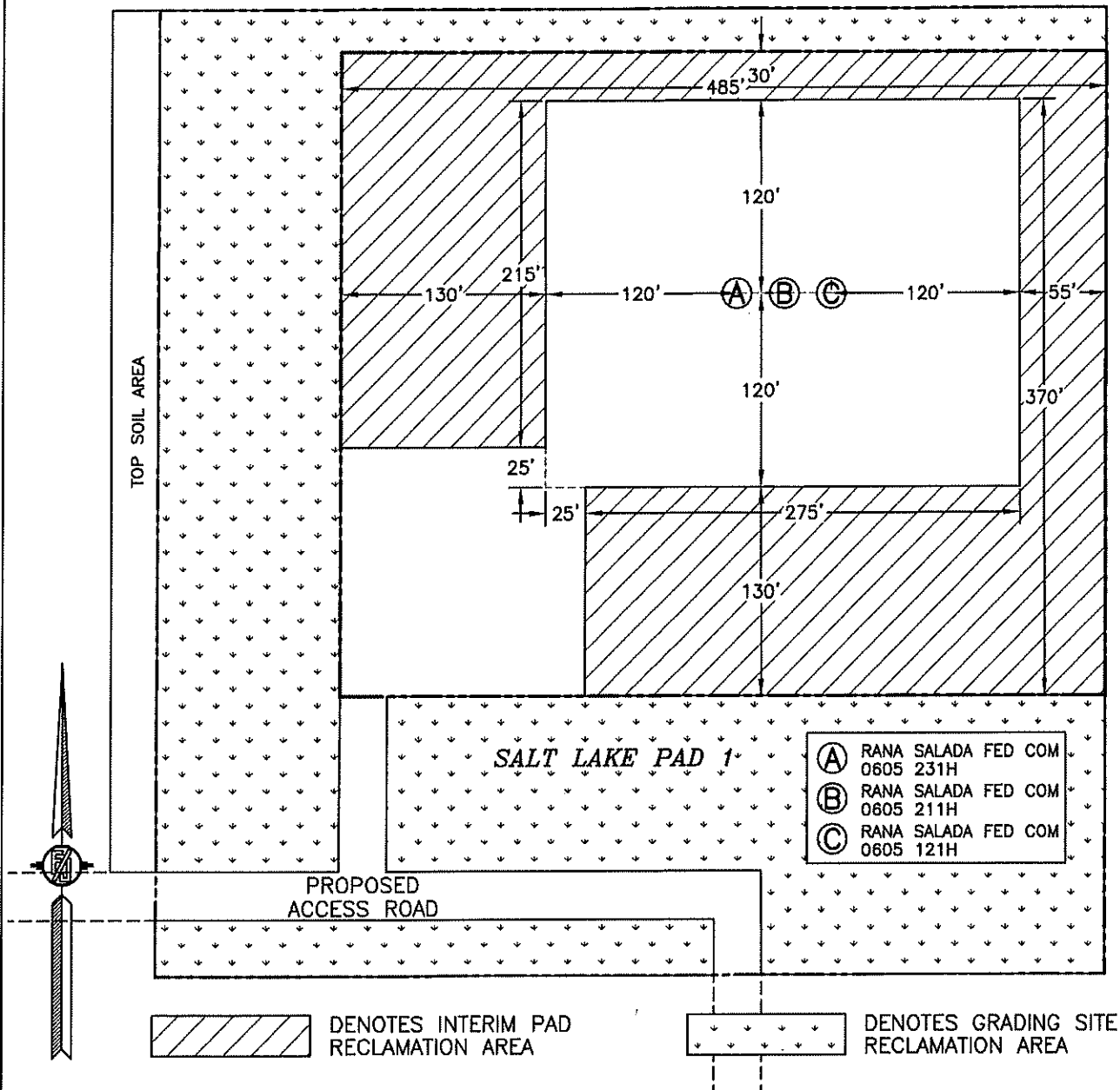
**NOVO OIL AND GAS NORTHERN DELAWARE, LLC
RANA SALADA FED COM 0605 121H
LOCATED 1127 FT. FROM THE NORTH LINE
AND 335 FT. FROM THE EAST LINE OF
SECTION 1, TOWNSHIP 23 SOUTH,
RANGE 28 EAST, N.M.P.M.
EDDY COUNTY, STATE OF NEW MEXICO**

JUNE 26, 2018

SURVEY NO. 6145B

MADRON SURVEYING, INC. 301 SOUTH CANAL (575) 234-3341 CARLSBAD, NEW MEXICO

**SECTION 1, TOWNSHIP 23 SOUTH, RANGE 28 EAST, N.M.P.M.
EDDY COUNTY, STATE OF NEW MEXICO
INTERIM SITE BUILD PLAN**



010 50 100 200
SCALE 1" = 100'

2.264± ACRES INTERIM PAD RECLAMATION AREA
3.450± ACRES GRADING SITE RECLAMATION AREA
2.551± ACRES NON-RECLAIMED AREA
8.265± ACRES SALT LAKE PAD 1

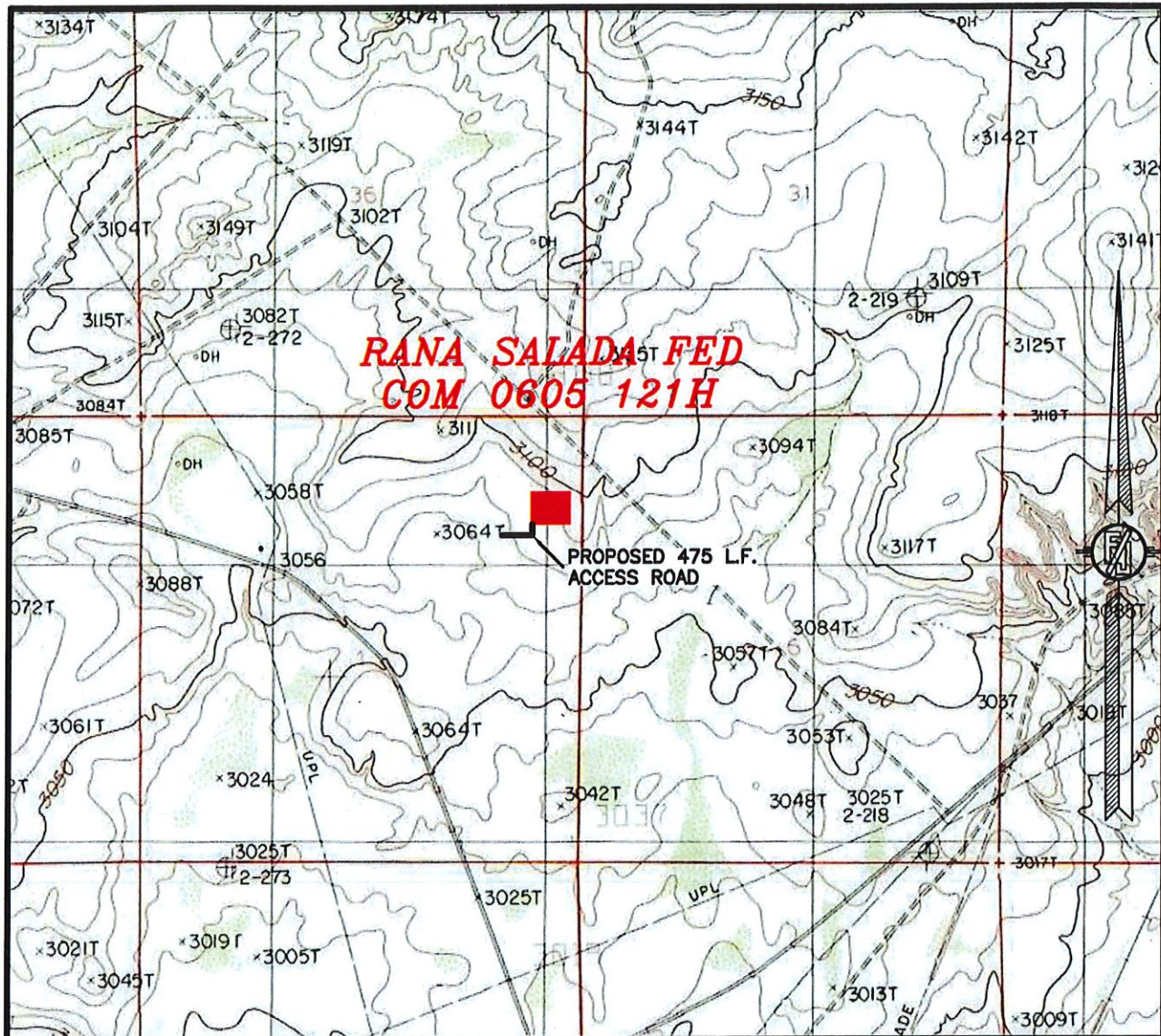
**NOVO OIL AND GAS NORTHERN DELAWARE, LLC
RANA SALADA FED COM 0605 121H
LOCATED 1127 FT. FROM THE NORTH LINE
AND 335 FT. FROM THE EAST LINE OF
SECTION 1, TOWNSHIP 23 SOUTH,
RANGE 28 EAST, N.M.P.M.
EDDY COUNTY, STATE OF NEW MEXICO**

JUNE 26, 2018

SURVEY NO. 6145B

MADRON SURVEYING, INC. 301 SOUTH CANAL (575) 234-3341 CARLSBAD, NEW MEXICO

**SECTION 1, TOWNSHIP 23 SOUTH, RANGE 28 EAST, N.M.P.M.
EDDY COUNTY, STATE OF NEW MEXICO
LOCATION VERIFICATION MAP**



USGS QUAD MAP:
LOVING

NOT TO SCALE

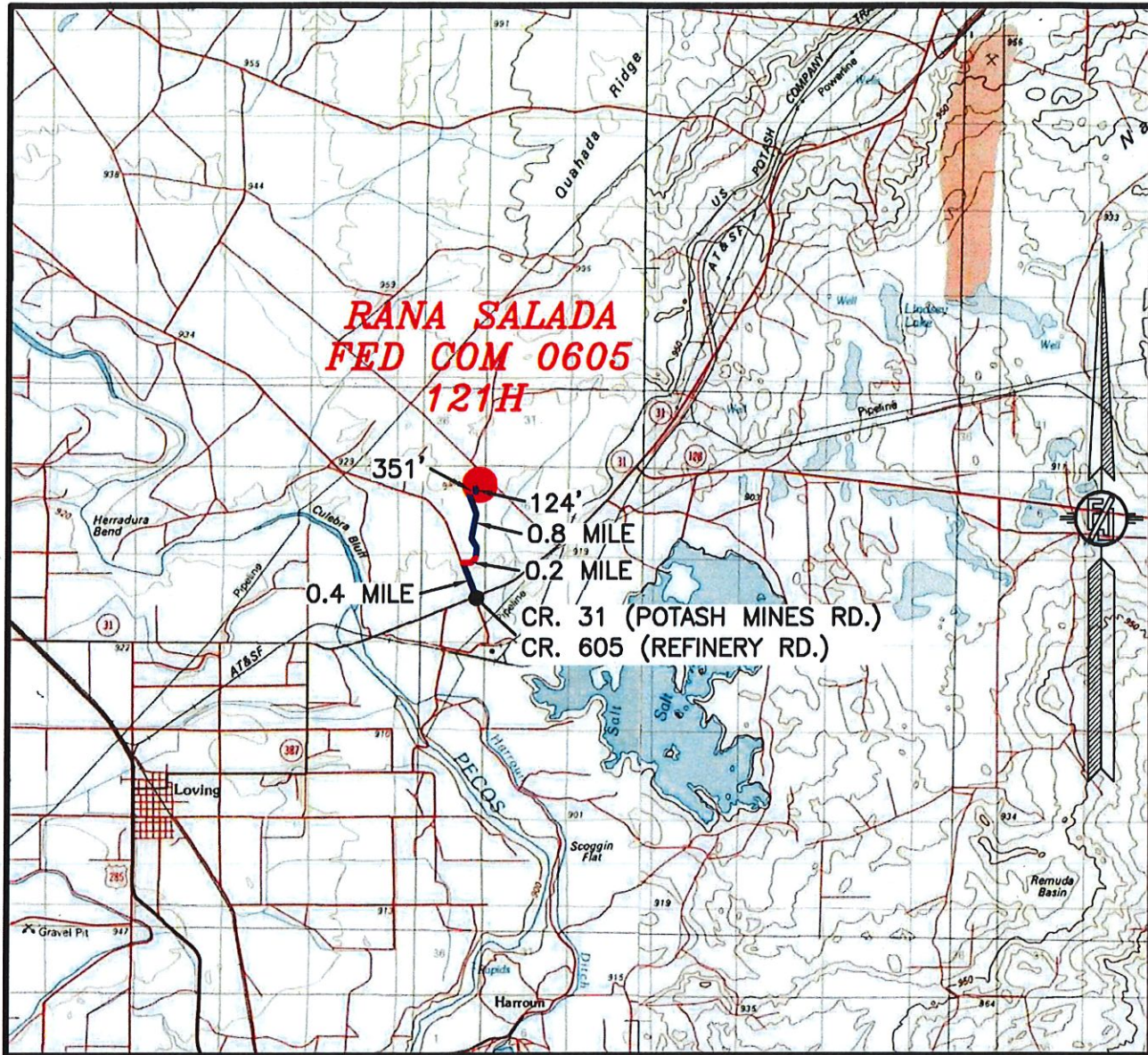
**NOVO OIL AND GAS NORTHERN DELAWARE, LLC
RANA SALADA FED COM 0605 121H
LOCATED 1127 FT. FROM THE NORTH LINE
AND 335 FT. FROM THE EAST LINE OF
SECTION 1, TOWNSHIP 23 SOUTH,
RANGE 28 EAST, N.M.P.M.
EDDY COUNTY, STATE OF NEW MEXICO**

JUNE 26, 2018

SURVEY NO. 6145B

MADRON SURVEYING, INC. 301 SOUTH CANAL (575) 234-3341 CARLSBAD, NEW MEXICO

**SECTION 1, TOWNSHIP 23 SOUTH, RANGE 28 EAST, N.M.P.M.
EDDY COUNTY, STATE OF NEW MEXICO
VICINITY MAP**



DISTANCES IN MILES

NOT TO SCALE

DIRECTIONS TO LOCATION

FROM CR. 31 (POTASH MINES RD.) AND CR. 605 (REFINERY RD.), GO NORTH ON CR. 605 APPROX. 0.4 MILE, TURN RIGHT (EAST) ON CALICHE ROAD AND GO EAST AND NORTHEAST APPROX. 0.2 MILE TO A "Y" IN ROAD, TURN LEFT (NORTH) AND GO APPROX. 0.8 MILE TO A ROAD SURVEY, FOLLOW ROAD SURVEY EAST 351' AND NORTH 124' TO THE SOUTHWEST PAD CORNER FOR THIS LOCATION.

**NOVO OIL AND GAS NORTHERN DELAWARE, LLC
RANA SALADA FED COM 0605 121H
LOCATED 1127 FT. FROM THE NORTH LINE
AND 335 FT. FROM THE EAST LINE OF
SECTION 1, TOWNSHIP 23 SOUTH,
RANGE 28 EAST, N.M.P.M.
EDDY COUNTY, STATE OF NEW MEXICO**

JUNE 26, 2018

SURVEY NO. 6145B

MADRON SURVEYING, INC. 301 SOUTH CANAL (575) 234-3341 **CARLSBAD, NEW MEXICO**

**SECTION 1, TOWNSHIP 23 SOUTH, RANGE 28 EAST, N.M.P.M.
EDDY COUNTY, STATE OF NEW MEXICO
AERIAL PHOTO**



NOT TO SCALE
AERIAL PHOTO:
GOOGLE EARTH
NOV. 2017

**NOVO OIL AND GAS NORTHERN DELAWARE, LLC
RANA SALADA FED COM 0605 121H
LOCATED 1127 FT. FROM THE NORTH LINE
AND 335 FT. FROM THE EAST LINE OF
SECTION 1, TOWNSHIP 23 SOUTH,
RANGE 28 EAST, N.M.P.M.
EDDY COUNTY, STATE OF NEW MEXICO**

JUNE 26, 2018

SURVEY NO. 6145B

MADRON SURVEYING, INC. 301 SOUTH CANAL (575) 234-3341 CARLSBAD, NEW MEXICO

*SECTION 1, TOWNSHIP 23 SOUTH, RANGE 28 EAST, N.M.P.M.
EDDY COUNTY, STATE OF NEW MEXICO
AERIAL ACCESS ROUTE MAP*



NOT TO SCALE
AERIAL PHOTO:
GOOGLE EARTH
NOV. 2017

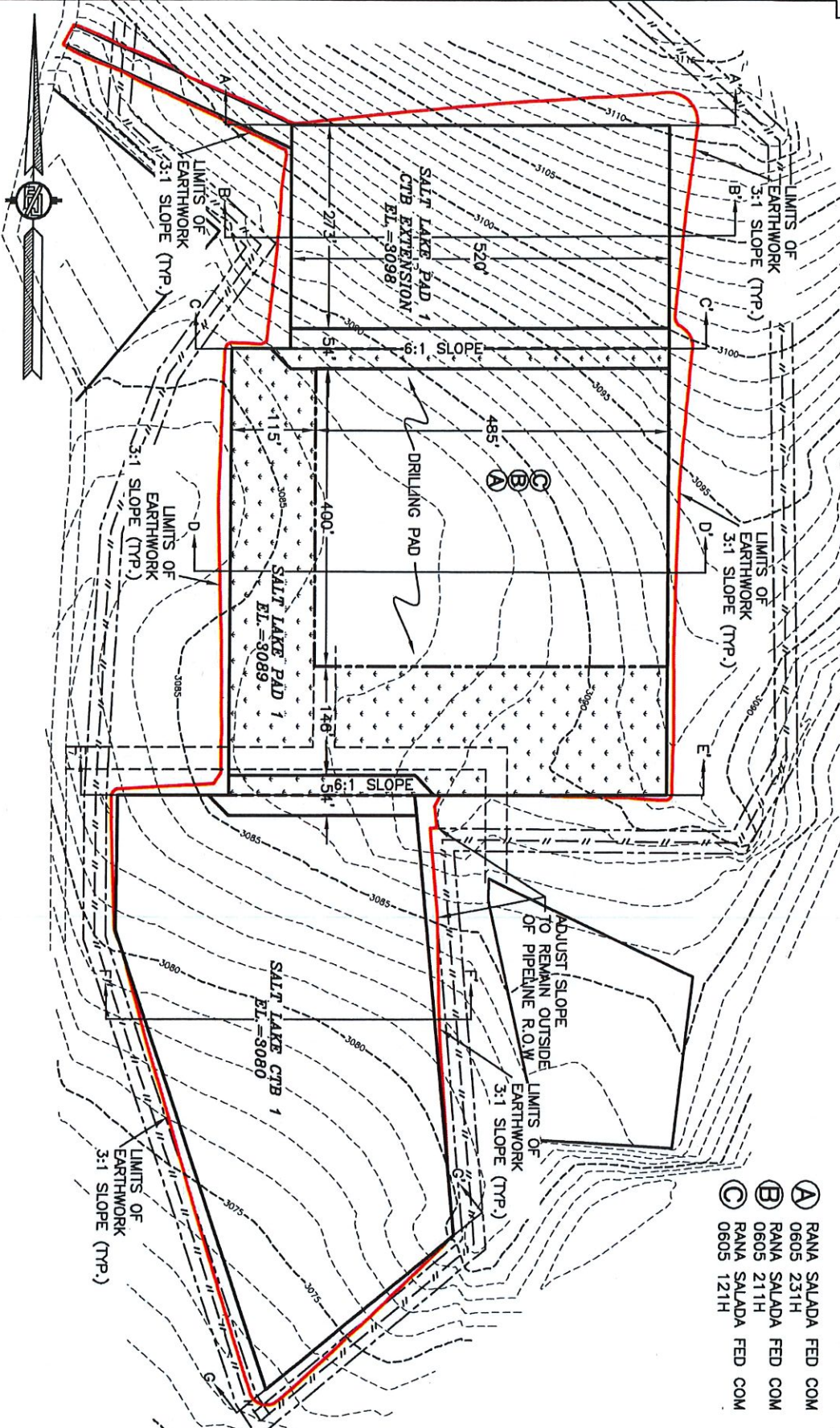
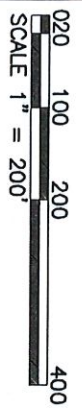
*NOVO OIL AND GAS NORTHERN DELAWARE, LLC
RANA SALADA FED COM 0605 121H
LOCATED 1127 FT. FROM THE NORTH LINE
AND 335 FT. FROM THE EAST LINE OF
SECTION 1, TOWNSHIP 23 SOUTH,
RANGE 28 EAST, N.M.P.M.
EDDY COUNTY, STATE OF NEW MEXICO*

JUNE 26, 2018

SURVEY NO. 6145B

MADRON SURVEYING, INC. 301 SOUTH CANAL (575) 234-3341 CARLSBAD, NEW MEXICO

PLAN VIEW



- Ⓐ RANA SALADA FED COM 0605 231H
- Ⓑ RANA SALADA FED COM 0605 211H
- Ⓒ RANA SALADA FED COM 0605 121H

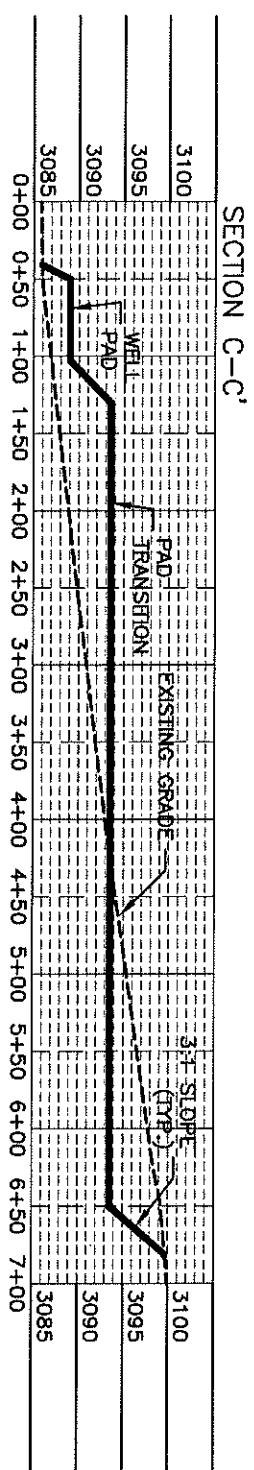
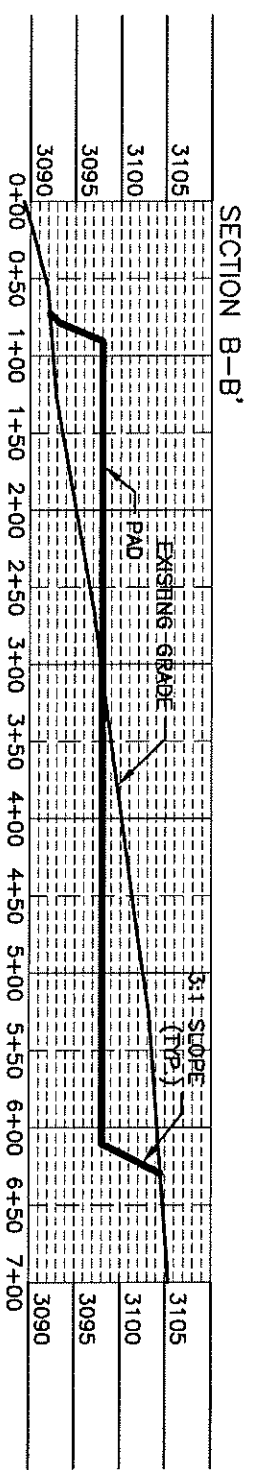
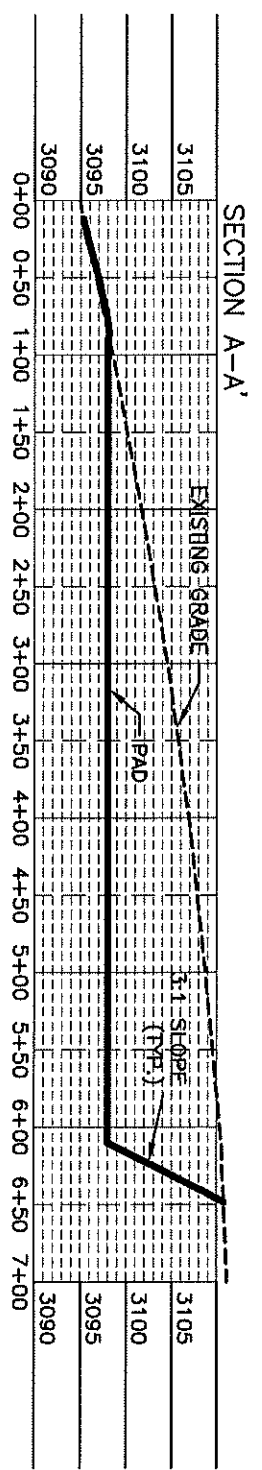
NOVO OIL AND GAS NORTHERN DELAWARE, LLC
 PAD GRADING AND CROSS SECTIONS
 FOR RANA SALADA FED COM 0605 121H
 SECTION 1, TOWNSHIP 23 SOUTH,
 RANGE 28 EAST, N.M.P.M.
 EDDY COUNTY, STATE OF NEW MEXICO

MADRON SURVEYING, INC. 301 SOUTH CANAL (575) 234-3341 CARLSBAD, NEW MEXICO
 JUNE 26, 2018
 SHEET 1-4
 SURVEY NO. 6145B

CUT	FILL	NET
46251 CU. YD	41361 CU. YD	4871 CU. YD (CUT)

EARTHWORK QUANTITIES ARE ESTIMATED

CROSS-SECTIONS



012 60 120 240
 SCALE 1" = 120' - 1" = 20' VER

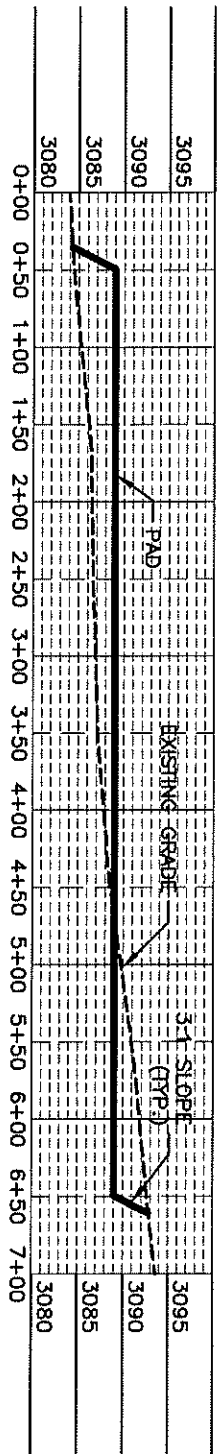
NOVO OIL AND GAS NORTHERN DELAWARE, LLC
PAD GRADING AND CROSS SECTIONS
FOR RANA SALADA FID COM 0605 121H
 SECTION 1, TOWNSHIP 23 SOUTH,
 RANGE 28 EAST, N.M.P.M.
 EDDY COUNTY, STATE OF NEW MEXICO

CUT	FILL	NET
46251 CU. YD	41361 CU. YD	4871 CU. YD (CUT)

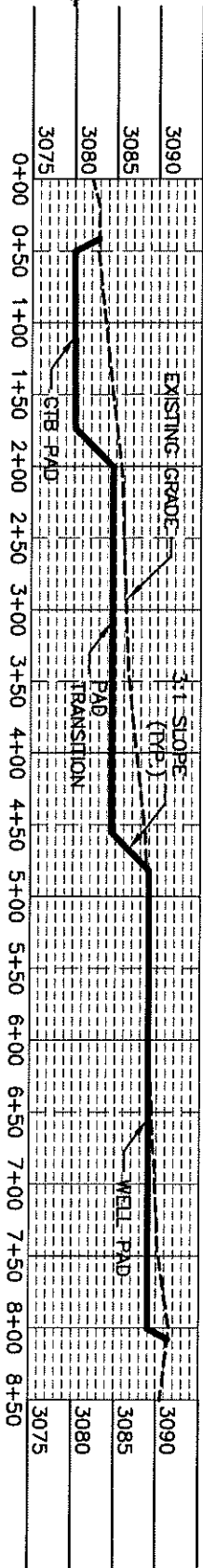
EARTHWORK QUANTITIES ARE ESTIMATED

CROSS-SECTIONS

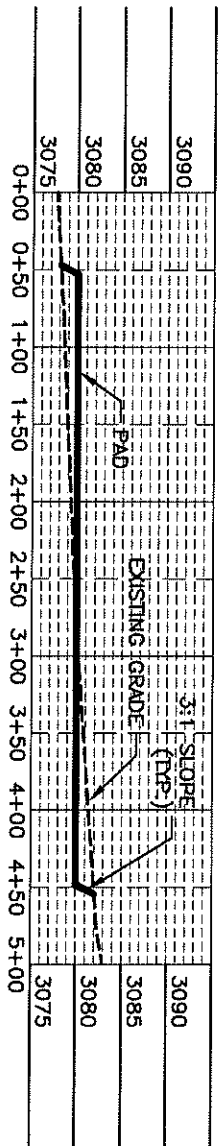
SECTION D-D'



SECTION E-E'



SECTION F-F'



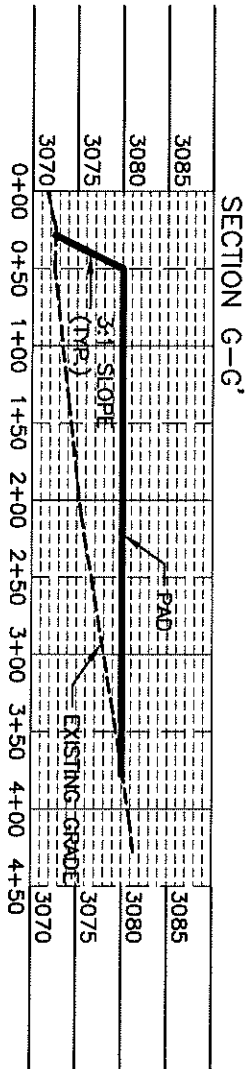
0+12 60 120 240
SCALE 1" = 120' - 1" = 20' VER

**NOVO OIL AND GAS NORTHERN DELAWARE, LLC
PAD GRADING AND CROSS SECTIONS
FOR RANA SALADA FED COM 0605 121H
SECTION 1, TOWNSHIP 23 SOUTH,
RANGE 28 EAST, N.M.P.M.
EDDY COUNTY, STATE OF NEW MEXICO**

CUT	FILL	NET
46251 CU. YD	41381 CU. YD	4871 CU. YD (CUT)

EARTHWORK QUANTITIES ARE ESTIMATED

CROSS-SECTIONS



0+12 60 120 240
SCALE 1" = 120' - 1" = 20' VER

NOVO OIL AND GAS NORTHERN DELAWARE, LLC
PAD GRADING AND CROSS SECTIONS
FOR RANA SALADA PED COM 0605 121H
SECTION 1, TOWNSHIP 23 SOUTH,
RANGE 28 EAST, N.M.P.M.
EDDY COUNTY, STATE OF NEW MEXICO

CUT	FILL	NET
46251 CU. YD	41381 CU. YD	4871 CU. YD (CUT)

EARTHWORK QUANTITIES ARE ESTIMATED

MADRON SURVEYING, INC. CARLSBAD, NEW MEXICO
JUNE 26, 2018
301 SOUTH CANAL (575) 234-3341
SHEET 4-4
SURVEY NO. 6145B