



Exhibit 12

**“Rana Salada”
Field Development Plan**

Exhibit: 12



Surface & Archeological Constraints

Aerial View of "Rana Salada"

- Surface locations are extremely scarce in this area due to:
 - Topography (e.g. the salt lake, drainage areas, bluffs)
 - Archeology
 - Potash Limitations

Amount of well pads sharply drops off

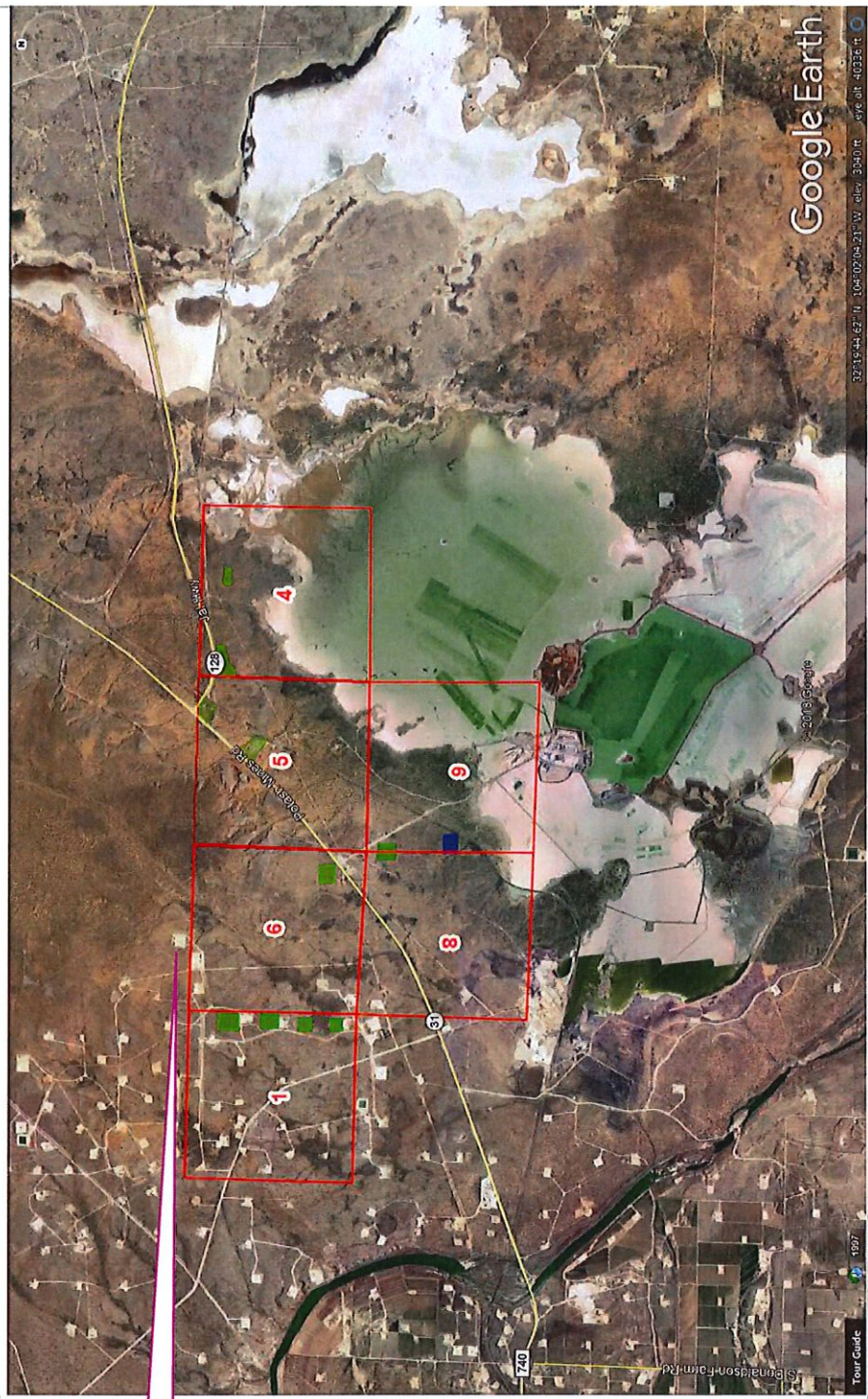
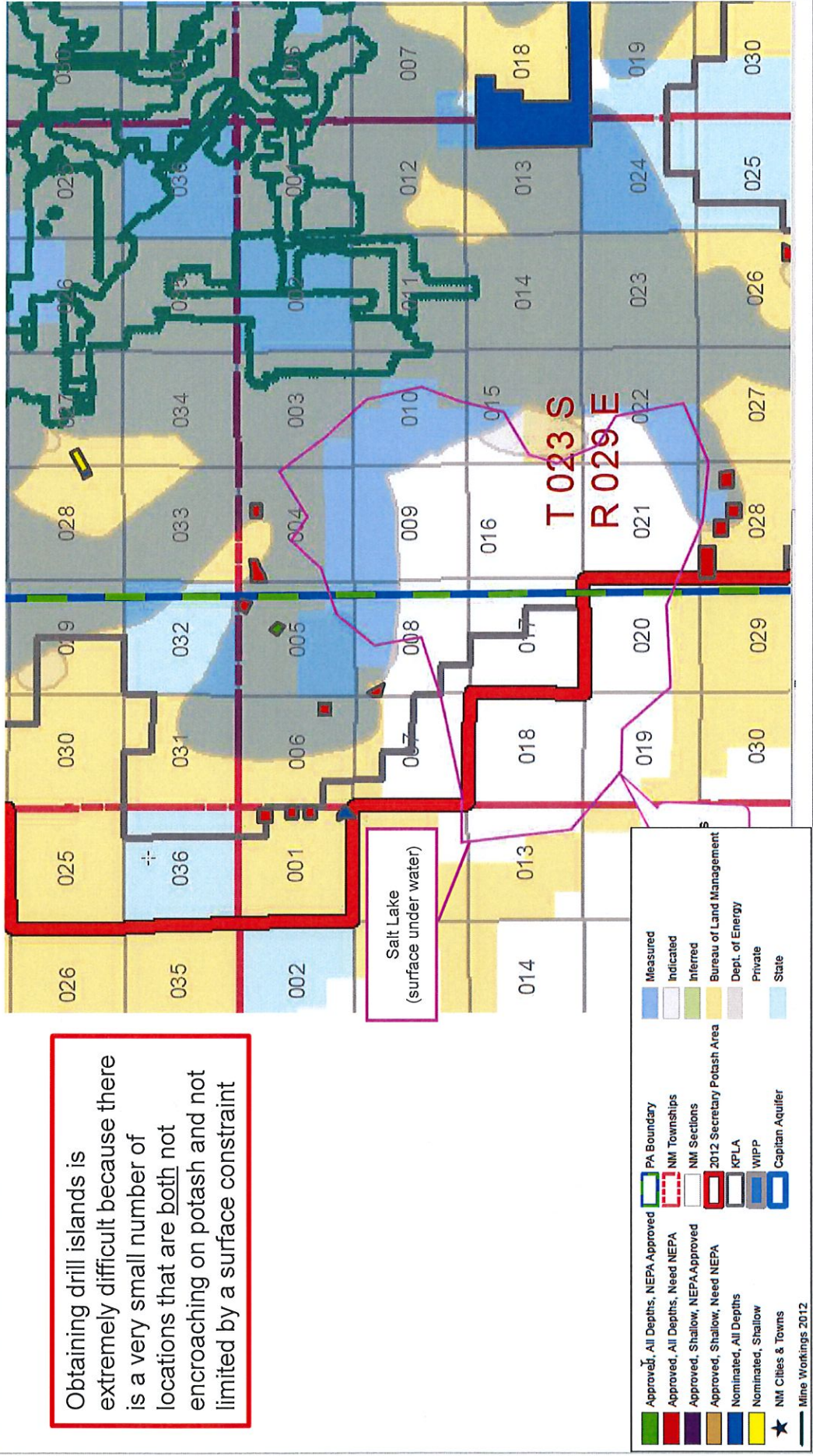


Exhibit: 12

Potash Constraints

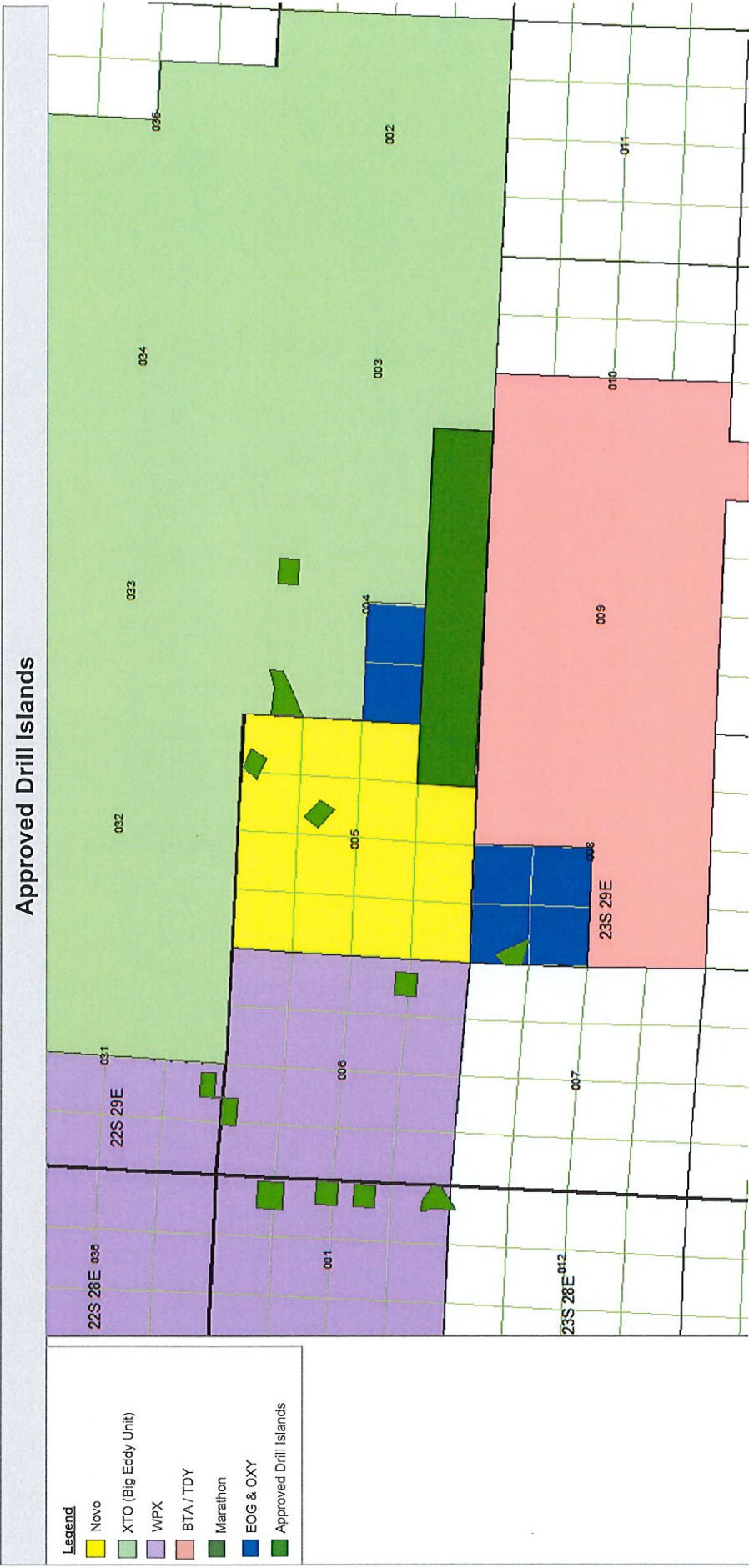


BLM-Issued Potash Map (4/6/2018 Version)





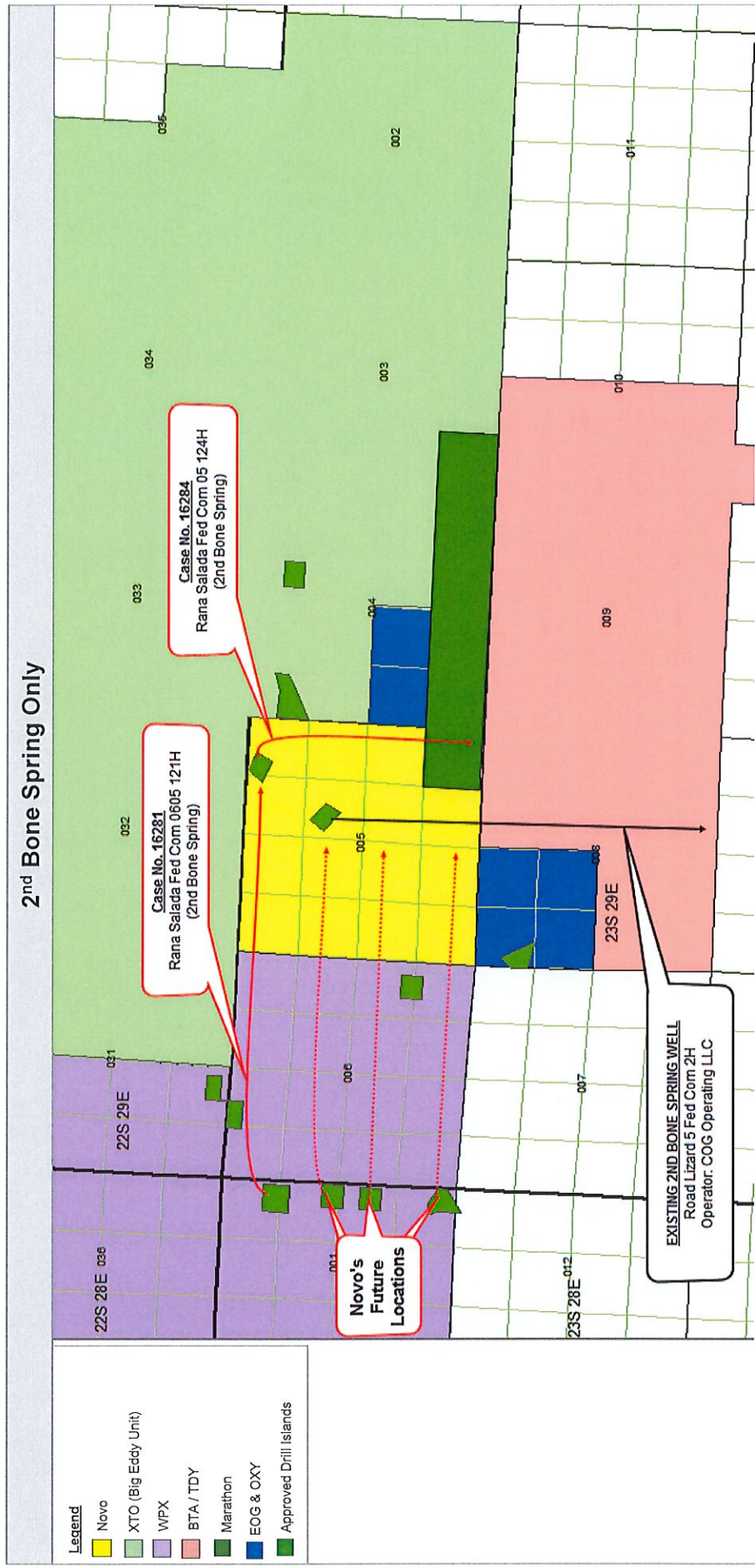
Surface Locations



Novo worked with the BLM and offset operators to identify drill island locations to facilitate full development of this prospect.



“Salt Lake” Potential Development



This development plan prevents acreage from being stranded despite the extreme surface and potash constraints. It also avoids conflict with Concho's existing "Road Lizard" well.



“Salt Lake” Potential Development

