

**Brandon Patrick**

---

**Subject:** FW: [EXTERNAL] Re: Rana Salada  
**Attachments:** image001.png

**From:** James Rutley <jrutley@blm.gov>  
**Sent:** Wednesday, August 08, 2018 7:17 AM  
**To:** Brandon Patrick <bpatrick@novoog.com>  
**Cc:** Brian Wood <brian@permitswest.com>  
**Subject:** Re: [EXTERNAL] Re: Rana Salada

Good Morning Brandon,

The Rana Salada 3 Development Area was approved on July 26, 2018 when BTA rescinded their protest. The DA was assigned DA-2018-020. The Rana Salada DA is still on the clock expiring on the 25th of August.

Cheers,

Jim

James S. Rutley

*Geologist (Potash Specialist)*

*Carlsbad Field Office*

*Bureau of Land Management*

*(575) 234-5904*

*Warning: This message is intended only for use of the individual or entity to which it is addressed, and may contain information that is privileged or confidential, and exempt from disclosure under applicable law. If the reader of this message is not the intended recipient or the employee or agent responsible for delivering this message to the intended recipient, you are hereby notified that any dissemination, distribution, or copying of this communication is strictly prohibited. If you have received this communication in error, please notify the sender immediately by return letter/fax/email.*

**Brandon Patrick**

---

**Subject:** FW: [EXTERNAL] Re: Do We Need On-Site? SHLs in 1-23S-29E

**From:** Rutley, James <jrutley@blm.gov>  
**Sent:** Tuesday, January 23, 2018 8:29 AM  
**To:** Brandon Patrick <bpatrick@novoog.com>  
**Subject:** Re: [EXTERNAL] Re: Do We Need On-Site? SHLs in 1-23S-29E

Good Morning Brandon,

Looks good! Glad to hear that you are working well with WPX and XTO!

Thanks

Jim

*James S. Rutley*

*Geologist (Potash Specialist)  
Carlsbad Field Office  
Bureau of Land Management  
(575) 234-5904*

On Mon, Jan 22, 2018 at 3:08 PM, Brandon Patrick <bpatrick@novoog.com> wrote:

Jim,

Attached is Novo's proposal for the "Rana Salada #3 Development Area". Please give it a look and let me know if you have any suggestions or questions. We worked closely with XTO and WPX to come up with this plan, so we hope the process will go smoothly.

Thanks for your help,

**Brandon Patrick**  
*Land Manager*  
Novo Oil & Gas, LLC  
105 N. Hudson Avenue, Suite 500, Oklahoma City, OK  
Office: 405-609-1740 Cell: 405-650-9081



**From:** Rutley, James [mailto:jrutley@blm.gov]  
**Sent:** Tuesday, January 09, 2018 7:17 AM



Brandon Patrick  
Land Manager  
Novo Oil & Gas Northern Delaware, LLC  
105 N. Hudson Avenue, Suite 500  
Oklahoma City, Oklahoma 73102  
Office: 405-609-1740  
bpatrick@novoog.com

January 22, 2018

**SENT VIA E-MAIL**

TO: Affected Parties of the Rana Salada #3 Development Area

Re: Rana Salada #3 Development Area  
Sections 4, 5, and 6, Township 23 South, Range 29 East  
Eddy County, New Mexico

To Whom It May Concern:

Novo Oil & Gas Northern Delaware, LLC ("Novo") has proposed a Development Area that falls within the Secretary's Potash Area in the captioned lands that may affect your leasehold and/or surface estate/permit. Please see the enclosed plat for the location of the BLM approved Rana Salada #3 Drill Island and Novo's proposed Rana Salada #3 Development Area, and Novo's initial development wells. Enclosed with this letter are Novo's State of New Mexico Form C-102s, Well Location and Acreage Dedication Plats for each of Novo's initial development wells, and a survey of the approved Rana Salada #3 Drill Island.

This letter serves as notice of the proposed action. You have thirty (30) calendar days from receipt of this letter to contact the BLM if you would like to express interest in collaborating with the proposal or protesting the proposal. If you would like to collaborate with or protest the establishment of the Rana Salada #3 Development Area, please respond to James Rutley ([jrutley@blm.gov](mailto:jrutley@blm.gov)) at the BLM, Carlsbad Field Office, 620 E. Greene Street, Carlsbad, NM 88220.

Please be aware that once a Development Area has been established it could affect your operating rights. Your timely participation in this process is required. If you have any questions or concerns, please do not hesitate to contact me via the contact information provided above.

Best,

Novo Oil & Gas Northern Delaware, LLC

Brandon Patrick  
Land Manager

**Rana Salada #3 Development Area**

**Novo's Development Plan:**

Novo believes the lands located within the Rana Salada #3 Development Area have significant development potential in multiple geologic formations, including benches in the Bone Spring, and Wolfcamp. Within the Rana Salada #3 Development Area, the following wells can be drilled:

- i. 1<sup>st</sup> Bone Spring horizontal wells and 3<sup>rd</sup> Bone Spring horizontal wells to develop the N/2 S/2 of Section 5, Township 23 South, Range 29 East, and N/2 S/2 of Section 4, Township 23 South, Range 29 East;
- ii. 1<sup>st</sup> Bone Spring horizontal wells and 3<sup>rd</sup> Bone Spring horizontal wells to develop the S/2 S/2 of Section 5, Township 23 South, Range 29 East, and S/2 S/2 of Section 4, Township 23 South, Range 29 East; and
- iii. Wolfcamp horizontal wells to develop the S/2 of Section 5, Township 23 South, Range 29 East, S/2 of Section 4, Township 23 South, Range 29 East.

Novo is in the process of preparing APDs for following two (2) initial wells:

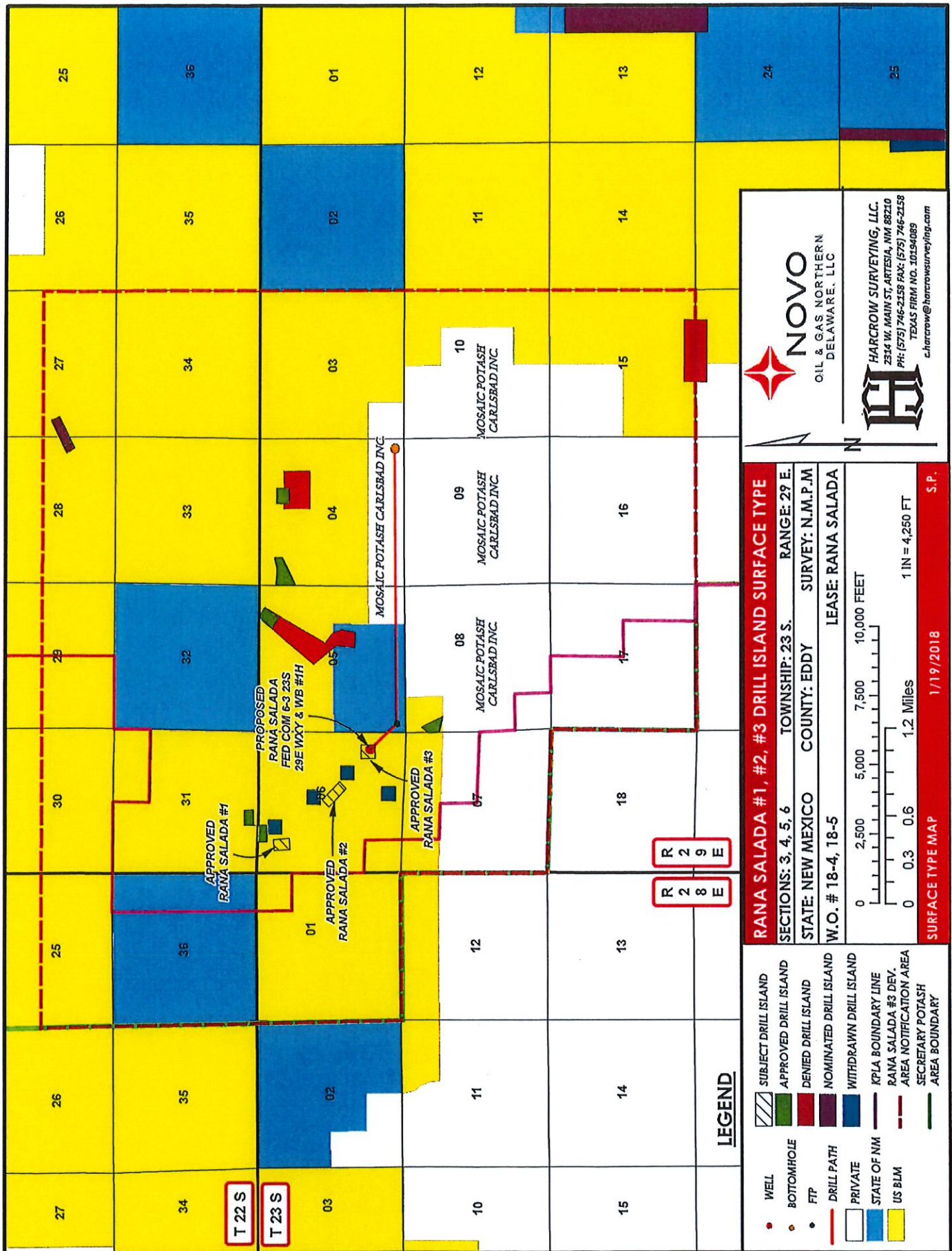
- (1) Rana Salada Fed Com 6-3 23S 29E WB #1H, targeting the Wolfcamp B, to be drilled with a surface hole location in Section 6, 1,279' FSL – 589' FEL, and a bottom hole location in Section 4, 330' FSL – 330' FEL. The first take point of the well will be in Section 5, 330' FSL – 330' FWL.
- (2) Rana Salada Fed Com 6-3 23S 29E WXY #1H, targeting the Wolfcamp XY, to be drilled with a surface hole location in Section 6, 1,249' FSL – 589' FEL, and a bottom hole location in Section 4, 330' FSL – 330' FEL. The first take point of the well will be in Section 5, 330' FSL – 330' FWL.

Due to surface restrictions, all wells within the Rana Salada #3 Development Area must be drilled from the approved Rana Salada #3 Drill Island located in the SE/4 of Section 6, Township 23 South, Range 29 East. If Novo successfully obtains all of the necessary permits and rights-of-way, the first of the initial wells is scheduled to be spud on or before May 1, 2018. Novo will continue to monitor development activity in this area. Novo anticipates that there may be additional horizons and/or potential for increased well density.

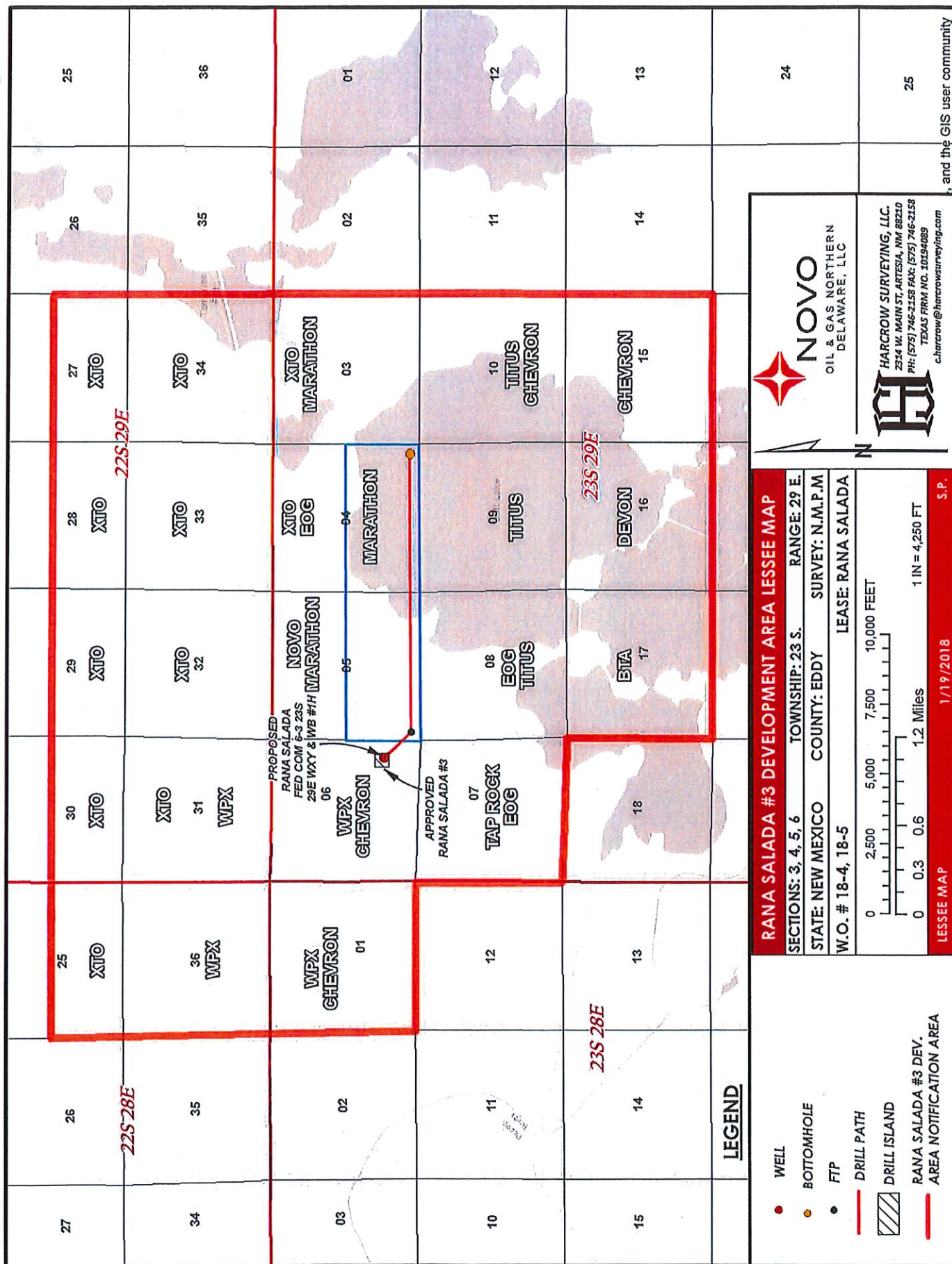


Rana Salada #3 Development Area  
Affected Parties

| Name                                | Type                              | Street                               | City          | State      | Postal Code | Certified Mail No. |
|-------------------------------------|-----------------------------------|--------------------------------------|---------------|------------|-------------|--------------------|
| DK Farms                            | Affected Surface / Grazing Lessee | 2727 Requet Club Drive               | Midland       | Texas      | 79705       |                    |
| Mosaic Potash Carlsbad Inc.         | Affected Potash Lessee            | P.O. Box 71                          | Carlsbad      | New Mexico | 88220       |                    |
| XTO Energy Inc.                     | Affected Operator / Lessee        | 810 Houston Street                   | Fort Worth    | Texas      | 76102       |                    |
| WPX Energy, Inc.                    | Affected Operator / Lessee        | 3500 One Williams Center, Suite 2600 | Tulsa         | Oklahoma   | 74172       |                    |
| Chevron USA Inc.                    | Affected Operator / Lessee        | 1400 Smith Street                    | Houston       | Texas      | 77002       |                    |
| Marathon Oil Corporation            | Affected Operator / Lessee        | 5555 San Felipe Street               | Houston       | Texas      | 77056       |                    |
| EOG Resources, Inc.                 | Affected Operator / Lessee        | P.O. Box 2267                        | Midland       | Texas      | 79702       |                    |
| Tap Rock Operating, LLC             | Affected Operator / Lessee        | 602 Park Point Drive, Suite 200      | Golden        | Colorado   | 80401       |                    |
| Titus Oil & Gas, LLC                | Affected Operator / Lessee        | 100 Throckmorton Street, Suite 1630  | Fort Worth    | Texas      | 76102       |                    |
| Devon Energy Production Company, LP | Affected Operator / Lessee        | 333 W. Sheridan Avenue               | Oklahoma City | Oklahoma   | 73102       |                    |
| BTA Oil Producers, LLC              | Affected Operator / Lessee        | 104 S. Pecos                         | Midland       | Texas      | 79701       |                    |
| OXY USA Inc.                        | Affected Operator / Lessee        | 5 Greenway Plaza, Suite 110          | Houston       | Texas      | 77046       |                    |
| COG Operating LLC                   | Affected Operator / Lessee        | 600 W. Illinois Avenue               | Midland       | Texas      | 79701       |                    |
| Mesquite SWD, Inc.                  | Affected Operator / Lessee        | P.O. Box 1479                        | Carlsbad      | New Mexico | 88221       |                    |









**NOVO**  
OIL & GAS NORTHERN  
DELAWARE, LLC



**HARCROW SURVEYING, LLC.**  
2314 W. MAIN ST. ARTESIA, NM 88210  
PH: (575) 746-2158 FAX: (575) 746-2153  
TEXAS FIRM NO. 10154089  
c.harcrow@harcrowsurveying.com

| RANA SALADA #3 DEVELOPMENT AREA LESSEE MAP  |                    |                  |  |
|---|--------------------|------------------|--|
| SECTIONS: 3, 4, 5, 6  | TOWNSHIP: 23 S.    | RANGE: 29 E.     |  |
| STATE: NEW MEXICO   | COUNTY: EDDY       | SURVEY: N.M.P.M. |  |
| W.O. # 18-4, 18-5   | LEASE: RANA SALADA |                  |  |
| <div><div><div><div><div>0</div><div>2,500</div><div>5,000</div><div>7,500</div><div>10,000 FEET</div></div><div><div><div></div><div></div><div></div><div></div><div></div><div></div><div></div><div></div><div></div><div></div><div></div><div></div><div></div><div></div><div></div><div></div><div></div><div></div><div></div><div></div><div></div><div></div><div></div><div></div><div></div><div></div><div></div><div></div><div></div><div></div><div></div><div></div><div></div><div></div><div></div><div></div><div></div><div></div><div></div><div></div><div></div><div></div><div></div><div></div><div></div><div></div><div></div><div></div><div></div><div></div><div></div><div></div><div></div><div></div><div></div><div></div><div></div><div></div><div></div><div></div><div></div><div></div><div></div><div></div><div></div><div></div><div></div><div></div><div></div><div></div><div></div><div></div><div></div><div></div><div></div><div></div><div></div><div></div><div></div><div></div><div></div><div></div><div></div><div></div><div></div><div></div><div></div><div></div><div></div><div></div><div></div><div></div><div></div><div></div><div></div><div></div><div></div><div></div><div></div><div></div><div></div><div></div><div></div><div></div><div></div><div></div><div></div><div></div><div></div><div></div><div></div><div></div><div></div><div></div><div></div><div></div><div></div><div></div><div></div><div></div><div></div><div></div><div></div><div></div><div></div><div></div><div></div><div></div><div></div><div></div><div></div><div></div><div></div><div></div><div></div><div></div><div></div><div></div><div></div><div></div><div></div><div></div><div></div><div></div><div></div><div></div><div></div><div></div><div></div><div></div><div></div><div></div><div></div><div></div><div></div><div></div><div></div><div></div><div></div><div></div><div></div><div></div><div></div><div></div><div></div><div></div><div></div><div></div><div></div><div></div><div></div><div></div><div></div><div></div><div></div><div></div><div></div><div></div><div></div><div></div><div></div><div></div><div></div><div></div><div></div><div></div><div></div><div></div><div></div><div></div><div></div><div></div><div></div><div></div><div></div><div></div><div></div><div></div><div></div><div></div><div></div><div></div><div></div><div></div><div></div><div></div><div></div><div></div><div></div><div></div><div></div><div></div><div></div><div></div><div></div><div></div><div></div><div></div><div></div><div></div><div></div><div></div><div></div><div></div><div></div><div></div><div></div><div></div><div></div><div></div><div></div><div></div><div></div><div></div><div></div><div></div><div></div><div></div><div></div><div></div><div></div><div></div><div></div><div></div><div></div><div></div><div></div><div></div><div></div><div></div><div></div><div></div><div></div><div></div><div></div><div></div><div></div><div></div><div></div><div></div><div></div><div></div><div></div><div></div><div></div><div></div><div></div><div></div><div></div><div></div><div></div><div></div><div></div><div></div><div></div><div></div><div></div><div></div><div></div><div></div><div></div><div></div><div></div><div></div><div></div><div></div><div></div><div></div><div></div><div></div><div></div><div></div><div></div><div></div><div></div><div></div><div></div><div></div><div></div><div></div><div></div><div></div><div></div><div></div><div></div><div></div><div></div><div></div><div></div><div></div><div></div><div></div><div></div><div></div><div></div><div></div><div></div><div></div><div></div><div></div><div></div><div></div><div></div><div></div><div></div><div></div><div></div><div></div><div></div><div></div><div></div><div></div><div></div><div></div><div></div><div></div><div></div><div></div><div></div><div></div><div></div><div></div><div></div><div></div><div></div><div></div><div></div><div></div><div></div><div></div><div></div><div></div><div></div><div></div><div></div><div></div><div></div><div></div><div></div><div></div><div></div><div></div><div></div><div></div><div></div><div></div><div></div><div></div><div></div><div></div><div></div><div></div><div></div><div></div><div></div><div></div><div></div><div></div><div></div><div></div><div></div><div></div><div></div><div></div><div></div><div></div><div></div><div></div><div></div><div></div><div></div><div></div><div></div><div></div><div></div><div></div><div></div><div></div><div></div><div></div><div></div><div></div><div></div><div></div><div></div><div></div><div></div><div></div><div></div><div></div><div></div><div></div><div></div><div></div><div></div><div></div><div></div><div></div><div></div><div></div><div></div><div></div><div></div><div></div><div></div><div></div><div></div><div></div><div></div><div></div><div></div><div></div><div></div><div></div><div></div><div></div><div></div><div></div><div></div><div></div><div></div><div></div><div></div><div></div><div></div><div></div><div></div><div></div><div></div><div></div><div></div><div></div><div></div><div></div><div></div><div></div><div></div><div></div><div></div><div></div><div></div><div></div><div></div><div></div><div></div><div></div><div></div><div></div><div></div><div></div><div></div><div></div><div></div><div></div><div></div><div></div><div></div><div></div><div></div><div></div><div></div><div></div><div></div><div></div><div></div><div></div><div></div><div></div><div></div><div></div><div></div><div></div><div></div><div></div><div></div><div></div><div></div><div></div><div></div><div></div><div></div><div></div><div></div><div></div><div></div><div></div><div></div><div></div><div></div><div></div><div></div><div></div><div></div><div></div><div></div><div></div><div></div><div></div><div></div><div></div><div></div><div></div><div></div><div></div><div></div><div></div><div></div><div></div><div></div><div></div><div></div><div></div><div></div><div></div><div></div><div></div><div></div><div></div><div></div><div></div><div></div><div></div><div></div><div></div><div></div><div></div><div></div><div></div><div></div><div></div><div></div><div></div><div></div><div></div><div></div><div></div><div></div><div></div><div></div><div></div><div></div><div></div><div></div><div></div><div></div><div></div><div></div><div></div><div></div><div></div><div></div><div></div><div></div><div></div><div></div><div></div><div></div><div></div><div></div><div></div><div></div><div></div><div></div><div></div><div></div><div></div><div></div><div></div><div></div><div></div><div></div><div></div><div></div><div></div><div></div><div></div><div></div><div></div><div></div><div></div><div></div><div></div><div></div><div></div><div></div><div></div><div></div><div></div><div></div><div></div><div></div><div></div><div></div><div></div><div></div><div></div><div></div><div></div><div></div><div></div><div></div><div></div><div></div><div></div><div></div><div></div><div></div><div></div><div></div><div></div><div></div><div></div><div></div><div></div><div></div><div></div><div></div><div></div><div></div><div></div><div></div><div></div><div></div><div></div><div></div><div></div><div></div><div></div><div></div><div></div><div></div><div></div><div></div><div></div><div></div><div></div><div></div><div></div><div></div><div></div><div></div><div></div><div></div><div></div><div></div><div></div><div></div><div></div><div></div><div></div><div></div><div></div><div></div><div></div><div></div><div></div><div></div><div></div><div></div><div></div><div></div><div></div><div></div><div></div><div></div><div></div><div></div><div></div><div></div><div></div><div></div><div></div><div></div><div></div><div></div><div></div><div></div><div></div><div></div><div></div><div></div><div></div><div></div><div></div><div></div><div></div><div></div><div></div><div></div><div></div><div></div><div></div><div></div><div></div><div></div><div></div><div></div><div></div><div></div><div></div><div></div><div></div><div></div><div></div><div></div><div></div><div></div><div></div><div></div><div></div><div></div><div></div><div></div><div></div><div></div><div></div><div></div><div></div><div></div><div></div><div></div><div></div><div></div><div></div><div></div><div></div><div></div><div></div><div></div><div></div><div></div><div></div><div></div><div></div><div></div><div></div><div></div><div></div><div></div><div></div><div></div><div></div><div></div><div></div><div></div><div></div><div></div><div></div><div></div><div></div><div></div><div></div><div></div><div></div><div></div><div></div><div></div><div></div><div></div><div></div><div></div><div></div><div></div><div></div><div></div><div></div><div></div><div></div><div></div><div></div><div></div><div></div><div></div><div></div><div></div><div></div><div></div><div></div><div></div><div></div><div></div><div></div><div></div><div></div><div></div><div></div><div></div><div></div><div></div><div></div><div></div><div></div><div></div><div></div><div></div><div></div><div></div><div></div><div></div><div></div><div></div><div></div><div></div><div></div><div></div><div></div><div></div><div></div><div></div><div></div><div></div><div></div><div></div><div></div><div></div><div></div><div></div><div></div><div></div><div></div><div></div><div></div><div></div><div></div><div></div><div></div><div></div><div></div><div></div><div></div><div></div><div></div><div></div><div></div><div></div><div></div><div></div><div></div><div></div><div></div><div></div><div></div><div></div><div></div><div></div><div></div><div></div><div></div><div></div><div></div><div></div><div></div><div></div><div></div><div></div><div></div><div></div><div></div><div></div><div></div><div></div><div></div><div></div><div></div><div></div><div></div><div></div><div></div><div></div><div></div><div></div><div></div><div></div><div></div><div></div><div></div><div></div><div></div><div></div><div></div><div></div><div></div><div></div><div></div><div></div><div></div><div></div><div></div><div></div><div></div><div></div><div></div><div></div><div></div><div></div><div></div><div></div><div></div><div></div><div></div><div></div><div></div><div></div><div></div><div></div><div></div><div></div><div></div><div></div><div></div><div></div><div></div><div></div><div></div><div></div><div></div><div></div><div></div><div></div><div></div><div></div><div></div><div></div><div></div><div></div><div></div><div></div><div></div><div></div><div></div><div></div><div></div><div></div><div></div><div></div><div></div><div></div><div></div><div></div><div></div><div></div><div></div><div></div><div></div><div></div><div></div><div></div><div></div><div></div><div></div><div></div><div></div><div></div><div></div><div></div><div></div><div></div><div></div><div></div><div></div><div></div><div></div><div></div><div></div><div></div><div></div><div></div><div></div><div></div><div></div><div></div><div></div><div></div><div></div><div></div><div></div><div></div><div></div><div></div><div></div><div></div><div></div><div></div><div></div><div></div><div></div><div></div><div></div><div></div><div></div><div></div><div></div><div></div><div></div><div></div><div></div><div></div><div></div><div></div><div></div><div></div><div></div><div></div><div></div><div></div><div></div><div></div><div></div><div></div><div></div><div></div><div></div><div></div><div></div><div></div><div></div><div></div><div></div><div></div><div></div><div></div><div></div><div></div><div></div><div></div><div></div><div></div><div></div><div></div><div></div><div></div><div></div><div></div><div></div><div></div><div></div><div></div><div></div><div></div><div></div><div></div><div></div><div></div><div></div><div></div><div></div><div></div><div></div><div></div><div></div><div></div><div></div><div></div><div></div><div></div><div></div><div></div><div></div><div></div><div></div><div></div><div></div><div></div><div></div><div></div><div></div><div></div><div></div><div></div><div></div><div></div><div></div><div></div><div></div><div></div><div></div><div></div><div></div><div></div><div></div><div></div><div></div><div></div><div></div><div></div><div></div><div></div><div></div><div></div><div></div><div></div><div></div><div></div><div></div><div></div><div></div><div></div><div></div><div></div><div></div><div></div><div></div><div></div><div></div><div></div><div></div><div></div><div></div><div></div><div></div><div></div><div></div><div></div><div></div><div></div><div></div><div></div><div></div><div></div><div></div><div></div><div></div><div></div><div></div><div></div><div></div><div></div><div></div><div></div><div></div><div></div><div></div><div></div><div></div><div></div><div></div><div></div><div></div><div></div><div></div><div></div><div></div><div></div><div></div><div></div><div></div><div></div><div></div><div></div><div></div><div></div><div></div><div></div><div></div><div></div><div></div><div></div><div></div><div></div><div></div><div></div><div></div><div></div><div></div><div></div><div></div><div></div><div></div><div></div><div></div><div></div><div></div><div></div><div></div><div></div><div></div><div></div><div></div><div></div><div></div><div></div><div></div><div></div><div></div><div></div><div></div><div></div><div></div><div></div><div></div><div></div><div></div><div></div><div></div><div></div><div></div><div></div><div></div><div></div><div></div><div></div><div></div><div></div><div></div><div></div><div></div><div></div><div></div><div></div><div></div><div></div><div></div><div></div><div></div><div></div><div></div><div></div><div></div><div></div><div></div><div></div><div></div><div></div><div></div><div></div><div></div><div></div><div></div><div></div><div></div><div></div><div></div><div></div><div></div><div></div><div></div><div></div><div></div><div></div><div></div><div></div><div></div><div></div><div></div><div></div><div></div><div></div><div></div><div></div><div></div><div></div><div></div><div></div><div></div><div></div><div></div><div></div><div></div><div></div><div></div><div></div><div></div><div></div><div></div><div></div><div></div><div></div><div></div><div></div><div></div><div></div><div></div><div></div><div></div><div></div><div></div><div></div><div></div><div></div><div></div><div></div><div></div><div></div><div></div><div></div><div></div><div></div><div></div><div></div><div></div><div></div><div></div><div></div><div></div><div></div><div></div><div></div><div></div><div></div><div></div><div></div><div></div><div></div><div></div><div></div><div></div><div></div><div></div><div></div><div></div><div></div><div></div><div></div><div></div><div></div><div></div><div></div><div></div><div></div><div></div><div></div><div></div><div></div><div></div><div></div><div></div><div></div><div></div><div></div><div></div><div></div><div></div><div></div><div></div><div></div><div></div><div></div><div></div><div></div><div></div><div></div><div></div><div></div><div></div><div></div><div></div><div></div><div></div><div></div><div></div><div></div><div></div><div></div><div></div><div></div><div></div><div></div><div></div><div></div><div></div><div></div><div></div><div></div><div></div><div></div><div></div><div></div><div></div><div></div><div></div><div></div><div></div><div></div><div></div><div></div><div></div><div></div><div></div><div></div><div></div><div></div><div></div><div></div><div></div><div></div><div></div><div></div><div></div><div></div><div></div><div></div><div></div><div></div><div></div><div></div><div></div><div></div><div></div><div></div><div></div><div></div><div></div><div></div><div></div><div></div><div></div><div></div><div></div><div></div><div></div><div></div><div></div><div></div><div></div><div></div><div></div><div></div><div></div><div></div><div></div><div></div><div></div><div></div><div></div><div></div><div></div><div></div><div></div><div></div><div></div><div></div><div></div><div></div><div></div><div></div><div></div><div></div><div></div><div></div><div></div><div></div><div></div><div></div><div></div><div></div><div></div><div></div><div></div><div></div><div></div><div></div><div></div><div></div><div></div><div></div><div></div><div></div><div></div><div></div><div></div><div></div><div></div><div></div><div></div><div></div><div></div><div></div><div></div><div></div><div></div><div></div><div></div><div></div><div></div><div></div><div></div><div></div><div></div><div></div><div></div><div></div><div></div><div></div><div></div><div></div><div></div><div></div><div></div><div></div><div></div><div></div><div></div><div></div><div></div><div></div><div></div><div></div><div></div><div></div><div></div><div></div><div></div><div></div><div></div><div></div><div></div><div></div><div></div><div></div><div></div><div></div><div></div><div></div><div></div><div></div><div></div><div></div><div></div><div></div><div></div><div></div><div></div><div></div><div></div><div></div><div></div><div></div><div></div><div></div><div></div><div></div><div></div><div></div><div></div><div></div><div></div><div></div><div></div><div></div><div></div><div></div><div></div><div></div><div></div><div></div><div></div><div></div><div></div><div></div><div></div><div></div><div></div><div></div><div></div><div></div><div></div><div></div><div></div><div></div><div></div><div></div><div></div><div></div><div></div><div></div><div></div><div></div><div></div><div></div><div></div><div></div><div></div><div></div><div></div><div></div><div></div><div></div><div></div><div></div><div></div><div></div><div></div><div></div><div></div><div></div><div></div><div></div><div></div><div></div>&lt;</div></div></div></div></div> |                    |                  |  |

and the GIS user community

**DISTRICT I**  
1625 N. FRENCH DR., HOBBS, NM 88240  
Phone: (505) 395-0161 Fax: (505) 393-0720

**DISTRICT II**  
811 S. FIRST ST., ARTESIA, NM 88210  
Phone: (505) 746-1283 Fax: (505) 746-9720

**DISTRICT III**  
1000 RIO BRAZOS RD., AZTEC, NM 87410  
Phone: (505) 334-8178 Fax: (505) 334-8170

**DISTRICT IV**  
1220 S. ST. FRANCIS DR., SANTA FE, NM 87505  
Phone: (505) 476-3460 Fax: (505) 476-3462

State of New Mexico  
**Energy, Minerals & Natural Resources Department**  
**OIL CONSERVATION DIVISION**  
1220 SOUTH ST. FRANCIS DR.  
Santa Fe, New Mexico 87505

Form C-102  
Revised August 1, 2011  
Submit one copy to appropriate  
District Office

☐ AMENDED REPORT

**WELL LOCATION AND ACREAGE DEDICATION PLAT**

|               |   |                             |
|---------------|---|-----------------------------|
| API Number    | Pool Code   | Pool Name                   |
| Property Code | Property Name<br><b>RANA SALADA FED COM 6-3 23S 29E WB</b>        |                             |
| OGRID No.     | Operator Name<br><b>NOVO OIL &amp; GAS NORTHERN DELAWARE, LLC</b> | Well Number<br><b>1H</b>    |
|               |   | Elevation<br><b>3039.8'</b> |

**Surface Location**

| UL or lot No. | Section | Township | Range | Lot Idn | Feet from the | North/South line | Feet from the | East/West line | County |
|---------------|---------|----------|-------|---------|---------------|------------------|---------------|----------------|--------|
| P             | 6       | 23-S     | 29-E  |         | 1249          | SOUTH            | 589           | EAST           | EDDY   |

**Bottom Hole Location If Different From Surface**

| UL or lot No. | Section | Township | Range | Lot Idn | Feet from the | North/South line | Feet from the | East/West line | County |
|---------------|---------|----------|-------|---------|---------------|------------------|---------------|----------------|--------|
| P             | 4       | 23-S     | 29-E  |         | 330           | SOUTH            | 330           | EAST           | EDDY   |

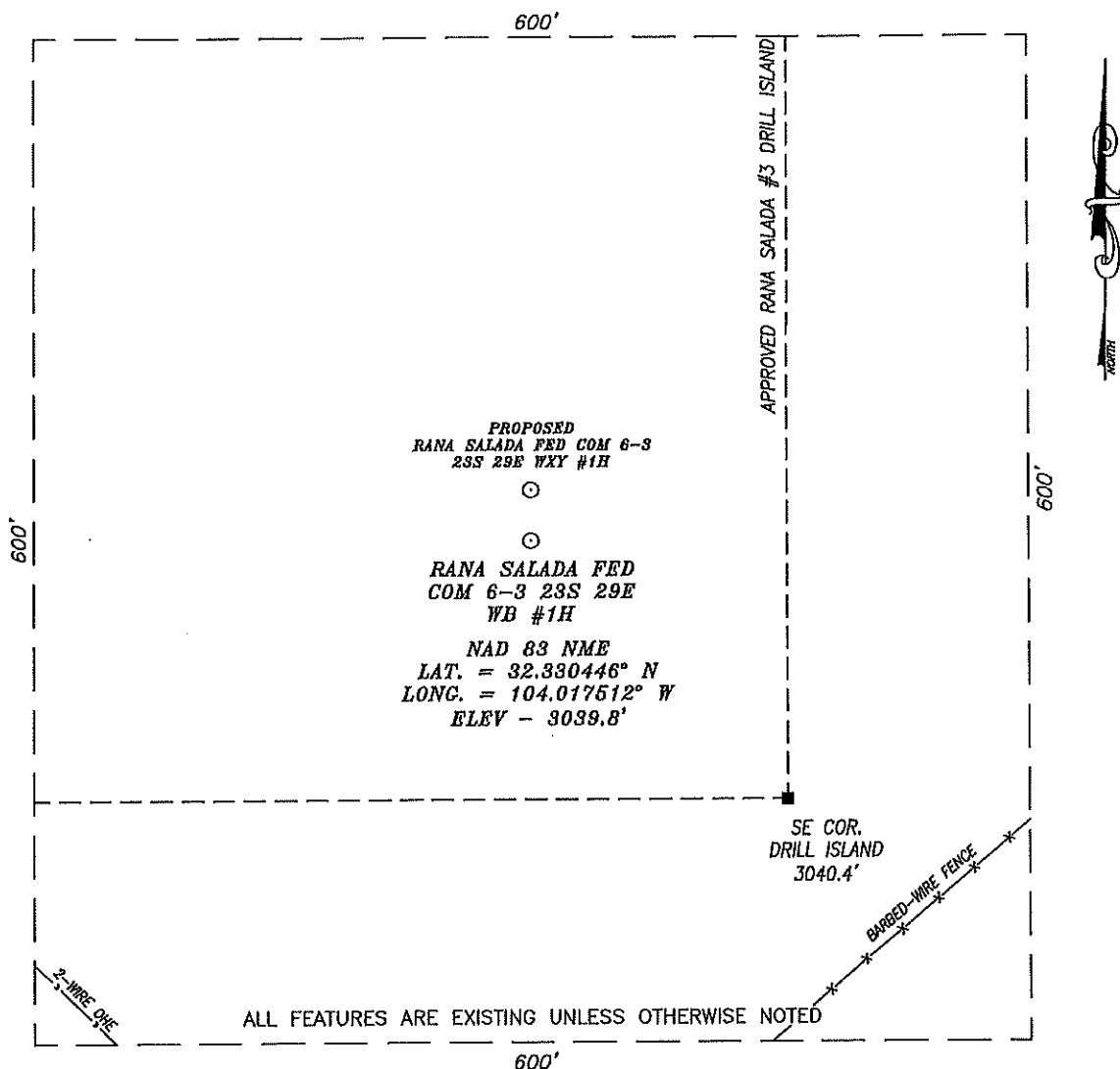
|                 |                 |                    |           |
|-----------------|-----------------|--------------------|-----------|
| Dedicated Acres | Joint or Infill | Consolidation Code | Order No. |
|                 |                 |                    |           |

NO ALLOWABLE WILL BE ASSIGNED TO THIS COMPLETION UNTIL ALL INTERESTS HAVE BEEN CONSOLIDATED  
OR A NON-STANDARD UNIT HAS BEEN APPROVED BY THE DIVISION

|  |  |
|--|--|
|  | <p style="text-align: center;"><b>OPERATOR CERTIFICATION</b></p> <p><i>I hereby certify that the information herein is true and complete to the best of my knowledge and belief, and that this organization either owns a working interest or unless mineral interest in the land including the proposed bottom hole location or has a right to drill this well at this location pursuant to a contract with an owner of such mineral or working interest, or to a voluntary pooling agreement or a compulsory pooling order heretofore entered by the division.</i></p> <p>Signature _____ Date _____</p> <p>Printed Name _____</p> <p>E-mail Address _____</p> <p style="text-align: center;"><b>SURVEYOR CERTIFICATION</b></p> <p><i>I hereby certify that the well location shown on this plat was plotted from field notes of actual surveys made by me or under my supervision, and that the same is true and correct to the best of my belief.</i></p> <p style="text-align: center;">JANUARY 4, 2018</p> <p>Date of Survey _____</p> <p>Signature &amp; Seal of Professional Surveyor</p> <div style="text-align: center;"> </div> <p style="text-align: right;">Chad L. Harcrow /22/18</p> <p>Certificate No. CHAD HARCROW 17777<br/>W.O. # 18-5 DRAWN BY: SP</p> |
|--|--|

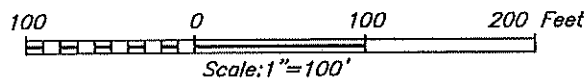


*SECTION 6, TOWNSHIP 23 SOUTH, RANGE 29 EAST, N.M.P.M.,  
EDDY COUNTY NEW MEXICO*



**DIRECTIONS TO LOCATION:**

FROM THE INTERSECTION OF ST. HWY. 31 - POTASH MINES RD. & U.S. REFINERY RD. - CR. 605; GO NORTHEASTERLY ON ST. HWY. 31 FOR APPROX. 1.3 MI.; THE PROPOSED WELL LIES APPROX. 620 FEET TO THE LEFT (WEST).



**HARCROW SURVEYING, LLC**  
2314 W. MAIN ST. ARTESIA, N.M. 88210  
PH: (575) 746-2158 FAX: (575) 746-2158  
Texas Firm No. 10194089  
c.harcrow@harcrowsurveying.com



**NOVO OIL & GAS NORTHERN DELAWARE, LLC**

**RANA SALADA FED COM 6-3 23S 29E WB #1H**  
LOCATED 1249 FEET FROM THE SOUTH LINE  
AND 589 FEET FROM THE EAST LINE OF SECTION 6,  
TOWNSHIP 23 SOUTH, RANGE 29 EAST, N.M.P.M.,  
EDDY COUNTY, NEW MEXICO

SURVEY DATE: JANUARY 4, 2018

600S

DRAFTING DATE: JANUARY 12, 2018

PAGE: 1 OF 1

APPROVED BY: CH

DRAWN BY: SP

FILE: 18-5

# Novo Oil and Gas Case 16282 Exhibit 18

**DISTRICT I**  
1825 N. FRENCH DR., HOBBS, NM 88240  
Phone: (505) 393-6161 Fax: (505) 393-0720

**DISTRICT II**  
811 S. FIRST ST., ARTESIA, NM 88210  
Phone: (505) 746-1203 Fax: (505) 746-9720

**DISTRICT III**  
1000 RIO BRAZOS RD., AZTEC, NM 87410  
Phone: (505) 834-6178 Fax: (505) 834-6170

**DISTRICT IV**  
1220 S. ST. FRANCIS DR., SANTA FE, NM 87505  
Phone: (505) 478-3460 Fax: (505) 478-3462

State of New Mexico  
Energy, Minerals & Natural Resources Department  
**OIL CONSERVATION DIVISION**  
1220 SOUTH ST. FRANCIS DR.  
Santa Fe, New Mexico 87505

Form C-102  
Revised August 1, 2011  
Submit one copy to appropriate  
District Office

☐ AMENDED REPORT

## WELL LOCATION AND ACREAGE DEDICATION PLAT

|               |                                       |           |
|---------------|---------------------------------------|-----------|
| API Number    | Pool Code                             | Pool Name |
| Property Code | Property Name                         |           |
|               | RANA SALADA FED COM 6-3 23S 29E WXY   |           |
| OGRID No.     | Operator Name                         | Elevation |
|               | NOVO OIL & GAS NORTHERN DELAWARE, LLC | 3040.1'   |

### Surface Location

| UL or lot No. | Section | Township | Range | Lot Idn | Feet from the | North/South line | Feet from the | East/West line | County |
|---------------|---------|----------|-------|---------|---------------|------------------|---------------|----------------|--------|
| P             | 6       | 23-S     | 29-E  |         | 1279          | SOUTH            | 589           | EAST           | EDDY   |

### Bottom Hole Location If Different From Surface

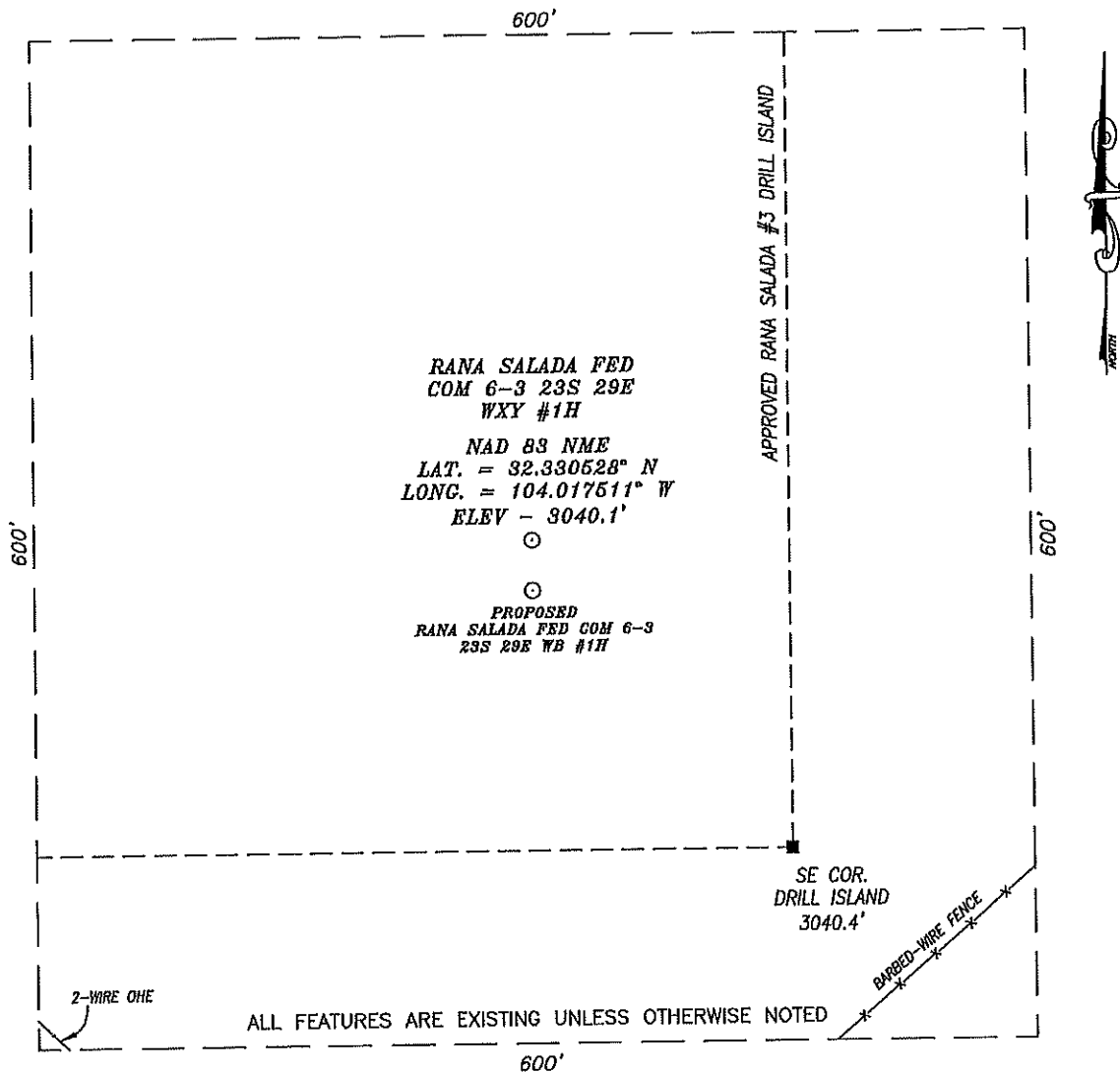
| UL or lot No. | Section | Township | Range | Lot Idn | Feet from the | North/South line | Feet from the | East/West line | County |
|---------------|---------|----------|-------|---------|---------------|------------------|---------------|----------------|--------|
| P             | 4       | 23-S     | 29-E  |         | 330           | SOUTH            | 330           | EAST           | EDDY   |

|                 |                 |                    |           |
|-----------------|-----------------|--------------------|-----------|
| Dedicated Acres | Joint or Infill | Consolidation Code | Order No. |
|                 |                 |                    |           |

NO ALLOWABLE WILL BE ASSIGNED TO THIS COMPLETION UNTIL ALL INTERESTS HAVE BEEN CONSOLIDATED  
OR A NON-STANDARD UNIT HAS BEEN APPROVED BY THE DIVISION

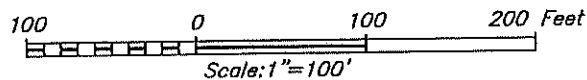
|  |   |
|--|---|
| <p style="text-align: center;">NAD 83 NME<br/>SURFACE LOCATION<br/>Y=484122.2 N<br/>X=638886.0 E<br/>LAT.=32.330528° N<br/>LONG.=104.017511° W</p> <p style="text-align: center;">NAD 83 NME<br/>PROPOSED BOTTOM<br/>HOLE LOCATION<br/>Y=482906.4 N<br/>X=650071.9 E<br/>LAT.=32.327996° N<br/>LONG.=103.982368° W</p> | <p style="text-align: center;"><b>OPERATOR CERTIFICATION</b></p> <p><i>I hereby certify that the information herein is true and complete to the best of my knowledge and belief, and that this organization either owns a working interest or unless mineral interest in the land including the proposed bottom hole location or has a right to drill this well at this location pursuant to a contract with an owner of such mineral or working interest, or to a voluntary pooling agreement or a compulsory pooling order heretofore entered by the division.</i></p> <p>Signature _____ Date _____</p> <p>Printed Name _____</p> <p>E-mail Address _____</p> <p style="text-align: center;"><b>SURVEYOR CERTIFICATION</b></p> <p><i>I hereby certify that the well location shown on this plat was plotted from field notes of actual surveys made by me or under my supervision, and that the same is true and correct to the best of my belief.</i></p> <p style="text-align: center;">JANUARY 4, 2018</p> <p>Date of Survey _____</p> <p>Signature &amp; Seal of Professional Surveyor</p> <div style="text-align: center;"> <p>CHAD L. HARGROW<br/>NEW MEXICO<br/>17777<br/>LICENSED PROFESSIONAL SURVEYOR</p> </div> <p style="text-align: right;">1/22/18</p> <p>Certificate No. CHAD HARGROW 17777</p> <p>W.O. # 18-4 DRAWN BY: SP</p> |
|--|---|

SECTION 6, TOWNSHIP 23 SOUTH, RANGE 29 EAST, N.M.P.M.,  
EDDY COUNTY NEW MEXICO



DIRECTIONS TO LOCATION:

FROM THE INTERSECTION OF ST. HWY. 31 - POTASH MINES RD. & U.S. REFINERY RD. - CR. 605; GO NORTHEASTERLY ON ST. HWY. 31 FOR APPROX. 1.3 MI.; THE PROPOSED WELL LIES APPROX. 700 FEET TO THE LEFT (WEST).



**HARCROW SURVEYING, LLC**  
2314 W. MAIN ST, ARTESIA, N.M. 88210  
PH: (575) 746-2158 FAX: (575) 746-2158  
Texas Firm No. 10194089  
c.harcrow@harcrowsurveying.com



**NOVO OIL & GAS NORTHERN DELAWARE, LLC**

RANA SALADA FED COM 6-3 23S 29E WXY #1H  
LOCATED 1279 FEET FROM THE SOUTH LINE  
AND 589 FEET FROM THE EAST LINE OF SECTION 6,  
TOWNSHIP 23 SOUTH, RANGE 29 EAST, N.M.P.M.,  
EDDY COUNTY, NEW MEXICO

|                                 |              |
|---------------------------------|--------------|
| SURVEY DATE: JANUARY 4, 2018    | 600S         |
| DRAFTING DATE: JANUARY 12, 2018 | PAGE: 1 OF 1 |
| APPROVED BY: CH                 | DRAWN BY: SP |
|                                 | FILE: 18-4   |



To: Brandon Patrick <[bpatrick@novoog.com](mailto:bpatrick@novoog.com)>  
Subject: Re: [EXTERNAL] Re: Do We Need On-Site? SHLs in 1-23S-29E

Brandon,

Of course, I usually have been vetting DA notification letter prior to sending out.

*James S. Rutley*

Geologist (Potash Specialist)  
Carlsbad Field Office  
Bureau of Land Management  
(575) 234-5904

On Mon, Jan 8, 2018 at 4:40 PM, Brandon Patrick <[bpatrick@novoog.com](mailto:bpatrick@novoog.com)> wrote:

Jim,

Thank you for your help. I will update the maps and affected parties list accordingly. We will have this Development Area proposal finished pretty soon (aiming for this week). When it's ready, can I send it to you for your review before we circulate it to the Affected Parties? I just want to make sure it's up to snuff.

Thanks again,

**Brandon Patrick**  
Land Manager  
Novo Oil & Gas, LLC  
[105 N. Hudson Avenue, Suite 500, Oklahoma City, OK](#)  
Office: 405-609-1740 Cell: 405-650-9081



From: Rutley, James [mailto:[jrutley@blm.gov](mailto:jrutley@blm.gov)]  
Sent: Monday, January 08, 2018 9:36 AM

To: Brandon Patrick <[bpatrick@novoog.com](mailto:bpatrick@novoog.com)>  
Subject: Re: [EXTERNAL] Re: Do We Need On-Site? SHLs in 1-23S-29E

Good Morning Brandon,

Actually, you don't have to notify those outside of the Secretary's Potash Area in Section 12, 13 in 23S 28E and Section 18 in 23S 29E. You want to notify those who operate, and have working right interest. I think it helps to notify significant owners but not all the lessees within the area.

Mosaic would be the potash lessee.

The grazing allottee is DK Farms, 2727 Raquet Club Drive, Midland, TX 79705

Regards,

Jim

*James S. Rutley*

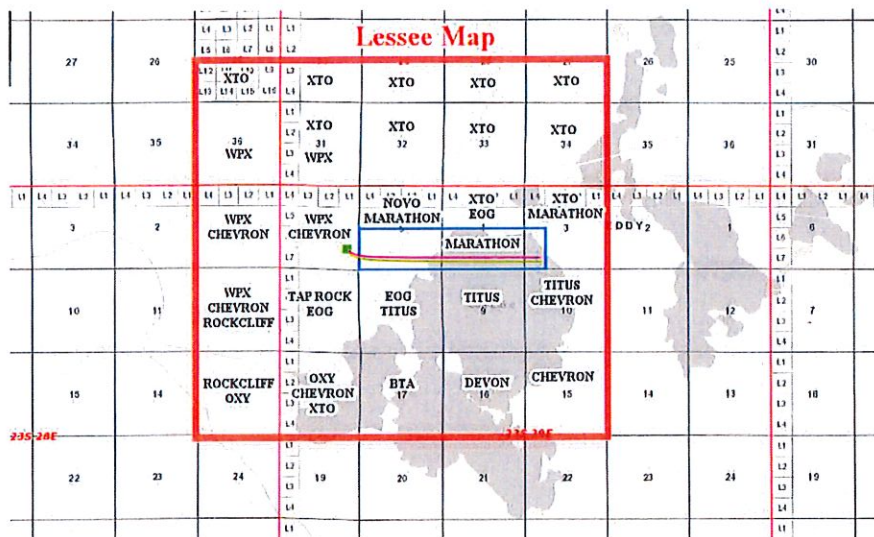
Geologist (Potash Specialist)  
Carlsbad Field Office  
Bureau of Land Management  
(575) 234-5904

On Fri, Jan 5, 2018 at 9:32 AM, Brandon Patrick <[bpatrick@novooil.com](mailto:bpatrick@novooil.com)> wrote:

Good morning Jim,

I hope you're having a good new year so far. I'm preparing a list of Affected Parties for the "Rana Salada #3 Development Area Proposal". I want to make sure I don't leave anyone out.

1. Does the image below show the correct Affected Parties Boundary?
2. To make the affected "Lessee/Operator" list, I included (a) all companies who operate wells in the section, and (b) companies who I knew owned significant leasehold rights in the section. Is that the correct method?
3. Can you help me identify the affected potash lessees and affected surface/grazing lease owners?



Thank you for your help!

Best,

**Brandon Patrick**  
Land Manager  
Novo Oil & Gas, LLC  
[105 N. Hudson Avenue, Suite 500, Oklahoma City, OK](mailto:105.N.Hudson.Avenue.Suite.500.Oklahoma.City.OK)  
Office: 405-609-1740 Cell: 405-650-9081



**NOVO**