

State of New Mexico  
Energy, Minerals & Natural Resources Department  
OIL CONSERVATION DIVISION  
1220 South St. Francis Dr.  
Santa Fe, NM 87505

Form C-102  
Revised August 1, 2011  
Submit one copy to appropriate  
District Office

☐ AMENDED REPORT

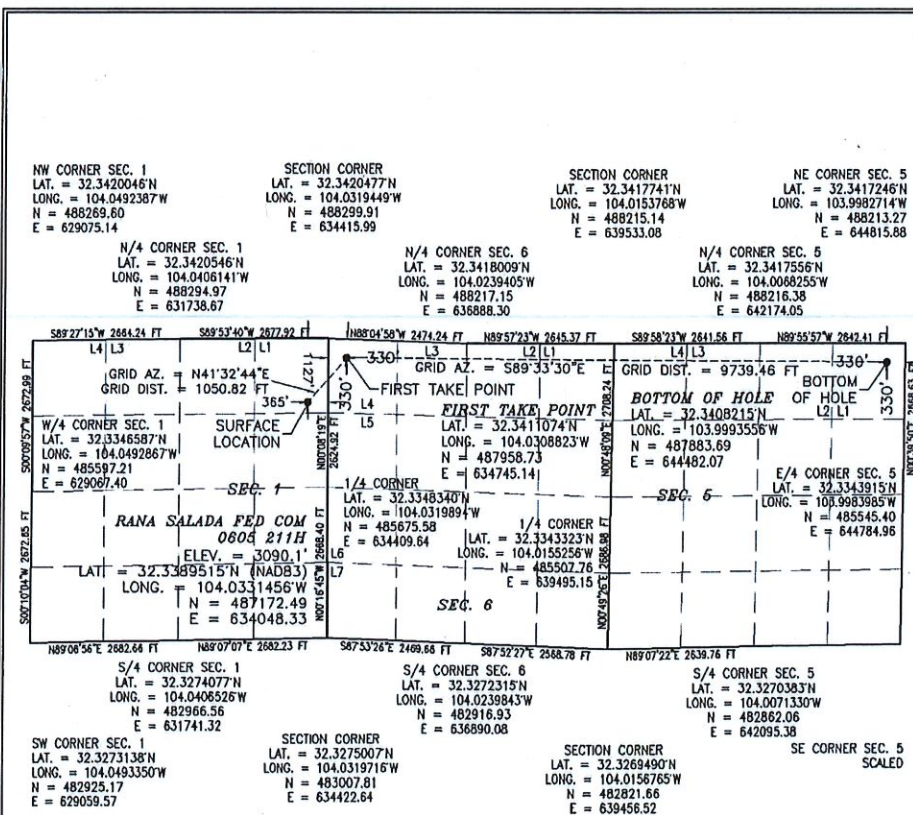
<sup>1</sup> API Number		<sup>2</sup> Pool Code	<sup>3</sup> Pool Name
<sup>4</sup> Property Code	<sup>5</sup> Property Name RANA SALADA FED COM 0605		<sup>6</sup> Well Number 211H
<sup>7</sup> OGRID No. 372920	<sup>8</sup> Operator Name NOVO OIL AND GAS NORTHERN DELAWARE, LLC		<sup>9</sup> Elevation 3090.1

UL or lot no.	Section	Township	Range	Lot Idn	Feet from the	North/South line	Feet from the	East/West line	County
1	1	23 S	28 E		1127	NORTH	365	EAST	EDDY

UL or lot no.	Section	Township	Range	Lot Idn	Feet from the	North/South line	Feet from the	East/ West line	County
<b>1</b>	<b>5</b>	<b>23 S</b>	<b>29 E</b>		<b>330</b>	<b>NORTH</b>	<b>330</b>	<b>EAST</b>	<b>EDDY</b>

<sup>12</sup> Dedicated Acres	<sup>13</sup> Joint or Infill	<sup>14</sup> Consolidation Code	<sup>15</sup> Order No.

No allowable will be assigned to this completion until all interests have been consolidated or a non-standard unit has been approved by the division.



I hereby certify that the information contained herein is true and complete to the best of my knowledge and belief, and that this organization either owns a working interest or unleased mineral interest in the land including the proposed bottom hole location or has a right to drill this well at this location pursuant to a contract with an owner of such a mineral or working interest, or to a voluntary pooling agreement or a compulsory pooling order heretofore entered by the division.

---

Signature \_\_\_\_\_
Date \_\_\_\_\_

Printed Name \_\_\_\_\_

E-mail Address

I hereby certify that the well location shown on this plat was plotted from field notes of actual surveys made by me or under my supervision, and that the same is true and correct to the best of my belief.

JUNE 26, 2018

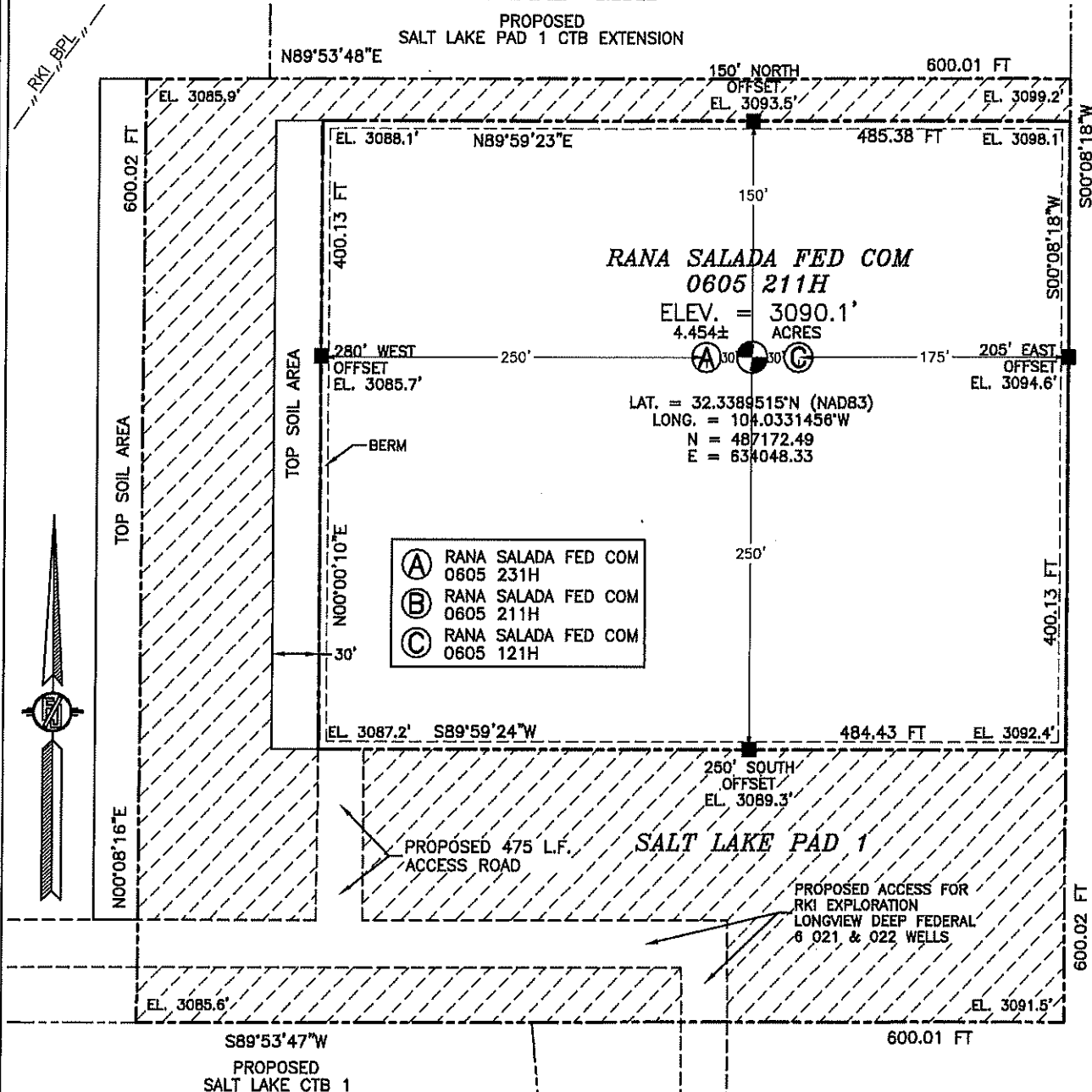
Date of Survey:

Signature and Seal of Professional Surveyor

Certificate Number **FILIMON F. JARAMILLO**, PLS 12797

SURVEY NO. 6143B

**SECTION 1, TOWNSHIP 23 SOUTH, RANGE 28 EAST, N.M.P.M.  
EDDY COUNTY, STATE OF NEW MEXICO  
SITE MAP**



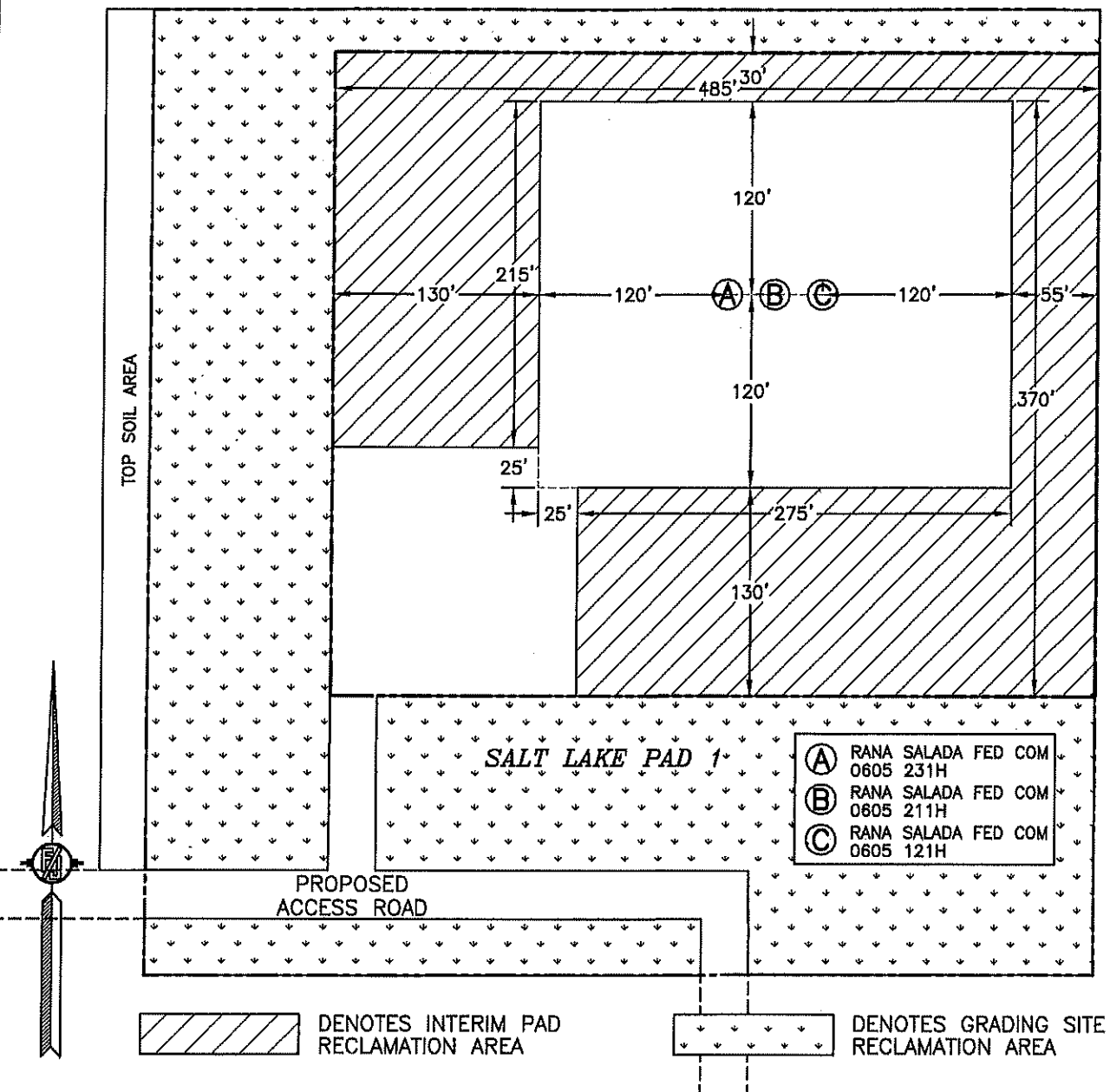
**NOVO OIL AND GAS NORTHERN DELAWARE, LLC  
RANA SALADA FED COM 0605 211H  
LOCATED 1127 FT. FROM THE NORTH LINE  
AND 365 FT. FROM THE EAST LINE OF  
SECTION 1, TOWNSHIP 23 SOUTH,  
RANGE 28 EAST, N.M.P.M.  
EDDY COUNTY, STATE OF NEW MEXICO**

**JUNE 26, 2018**

**SURVEY NO. 6143B**

**MADRON SURVEYING, INC. 301 SOUTH CANAL CARLSBAD, NEW MEXICO**  
(575) 234-3344

**SECTION 1, TOWNSHIP 23 SOUTH, RANGE 28 EAST, N.M.P.M.  
EDDY COUNTY, STATE OF NEW MEXICO  
INTERIM SITE BUILD PLAN**



2.264± ACRES INTERIM PAD RECLAMATION AREA  
 3.450± ACRES GRADING SITE RECLAMATION AREA  
 2.551± ACRES NON-RECLAIMED AREA  
 8.265± ACRES SALT LAKE PAD 1

**NOVO OIL AND GAS NORTHERN DELAWARE, LLC  
 RANA SALADA FED COM 0605 211H  
 LOCATED 1127 FT. FROM THE NORTH LINE  
 AND 365 FT. FROM THE EAST LINE OF  
 SECTION 1, TOWNSHIP 23 SOUTH,  
 RANGE 28 EAST, N.M.P.M.  
 EDDY COUNTY, STATE OF NEW MEXICO**

**JUNE 26, 2018**

**SURVEY NO. 6143B**

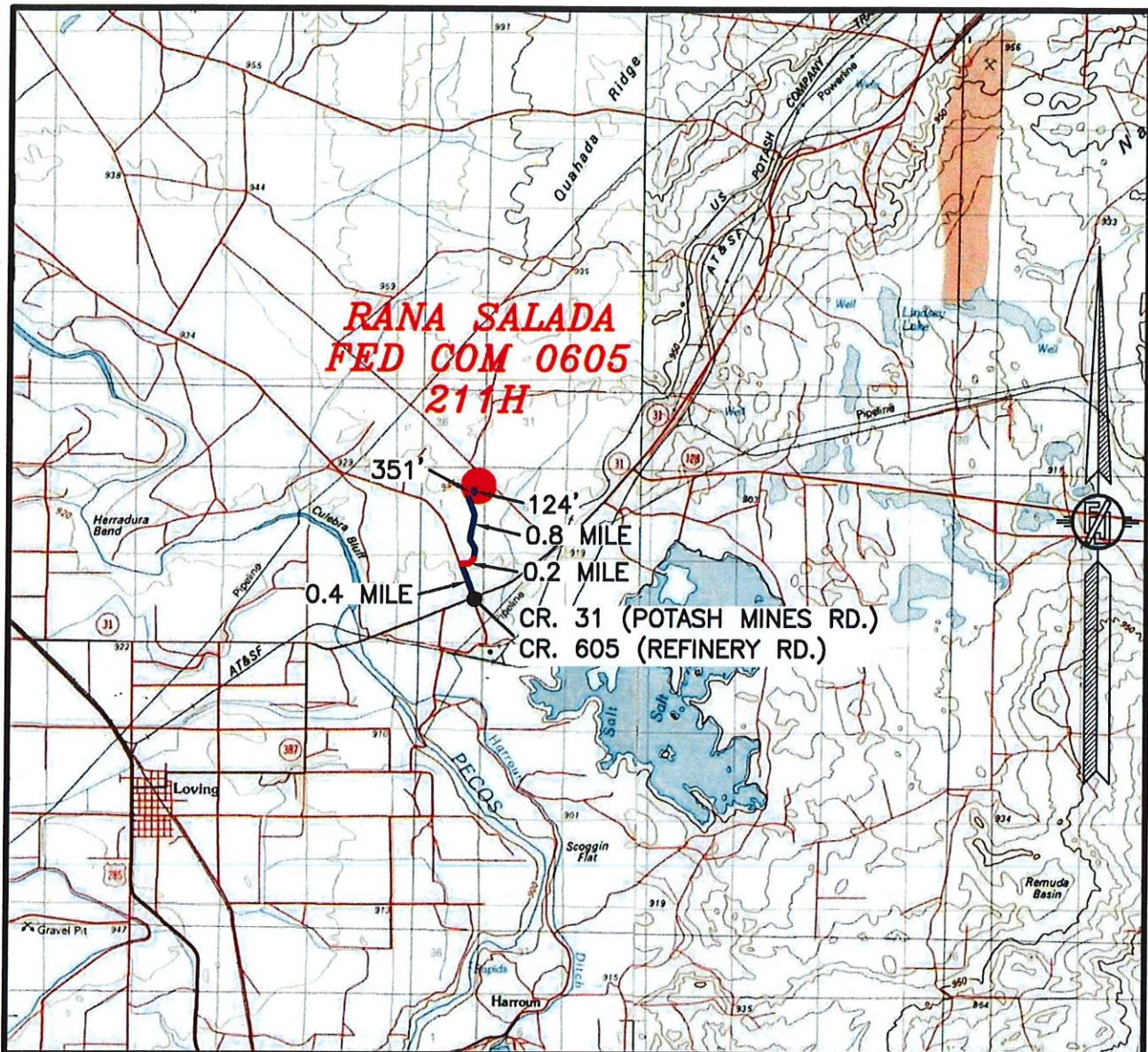
**MADRON SURVEYING, INC. 301 SOUTH CANAL CARLSBAD, NEW MEXICO**  
 (575) 234-3341







**SECTION 1, TOWNSHIP 23 SOUTH, RANGE 28 EAST, N.M.P.M.  
EDDY COUNTY, STATE OF NEW MEXICO  
VICINITY MAP**



DISTANCES IN MILES

NOT TO SCALE

**DIRECTIONS TO LOCATION**

FROM CR. 31 (POTASH MINES RD.) AND CR. 605 (REFINERY RD.), GO NORTH ON CR. 605 APPROX. 0.4 MILE, TURN RIGHT (EAST) ON CALICHE ROAD AND GO EAST AND NORTHEAST APPROX. 0.2 MILE TO A "Y" IN ROAD, TURN LEFT (NORTH) AND GO APPROX. 0.8 MILE TO A ROAD SURVEY, FOLLOW ROAD SURVEY EAST 351' AND NORTH 124' TO THE SOUTHWEST PAD CORNER FOR THIS LOCATION.

**NOVO OIL AND GAS NORTHERN DELAWARE, LLC  
RANA SALADA FED COM 0605 211H  
LOCATED 1127 FT. FROM THE NORTH LINE  
AND 365 FT. FROM THE EAST LINE OF  
SECTION 1, TOWNSHIP 23 SOUTH,  
RANGE 28 EAST, N.M.P.M.  
EDDY COUNTY, STATE OF NEW MEXICO**

JUNE 26, 2018

**MADRON SURVEYING, INC.** 301 SOUTH CANAL  
(575) 234-3341

**SURVEY NO. 6143B  
CARLSBAD, NEW MEXICO**



**SECTION 1, TOWNSHIP 23 SOUTH, RANGE 28 EAST, N.M.P.M.  
EDDY COUNTY, STATE OF NEW MEXICO  
AERIAL PHOTO**



NOT TO SCALE  
AERIAL PHOTO:  
GOOGLE EARTH  
NOV. 2017

**NOVO OIL AND GAS NORTHERN DELAWARE, LLC  
RANA SALADA FED COM 0605 211H  
LOCATED 1127 FT. FROM THE NORTH LINE  
AND 365 FT. FROM THE EAST LINE OF  
SECTION 1, TOWNSHIP 23 SOUTH,  
RANGE 28 EAST, N.M.P.M.  
EDDY COUNTY, STATE OF NEW MEXICO**

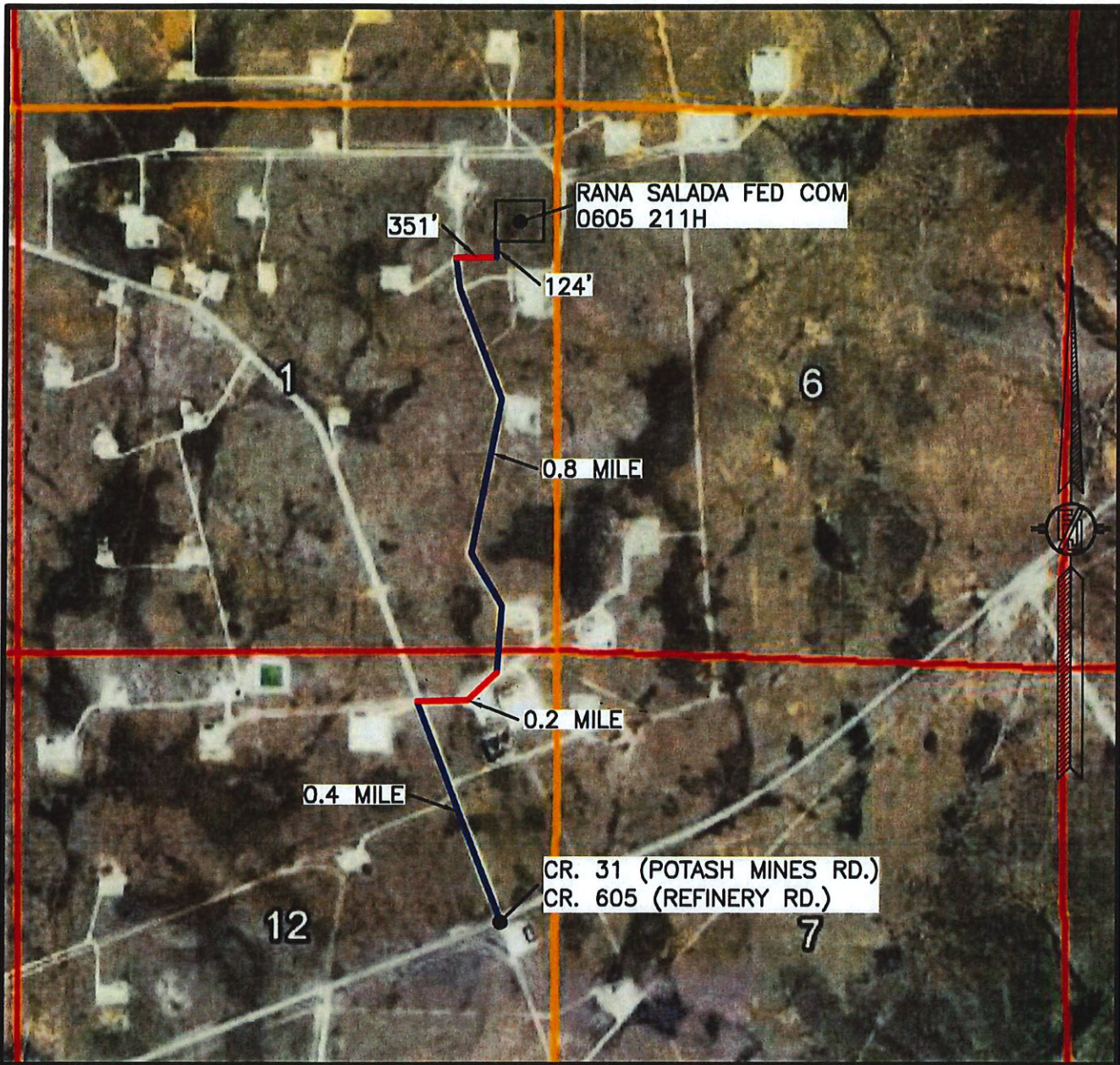
**JUNE 26, 2018**

**SURVEY NO. 6143B**

**MADRON SURVEYING, INC. 301 SOUTH CANAL (575) 234-3341 CARLSBAD, NEW MEXICO**



*SECTION 1, TOWNSHIP 23 SOUTH, RANGE 28 EAST, N.M.P.M.  
EDDY COUNTY, STATE OF NEW MEXICO  
AERIAL ACCESS ROUTE MAP*



NOT TO SCALE  
AERIAL PHOTO:  
GOOGLE EARTH  
NOV. 2017

**NOVO OIL AND GAS NORTHERN DELAWARE, LLC**  
**RANA SALADA FED COM 0605 211H**  
LOCATED 1127 FT. FROM THE NORTH LINE  
AND 365 FT. FROM THE EAST LINE OF  
SECTION 1, TOWNSHIP 23 SOUTH,  
RANGE 28 EAST, N.M.P.M.  
EDDY COUNTY, STATE OF NEW MEXICO

JUNE 26, 2018

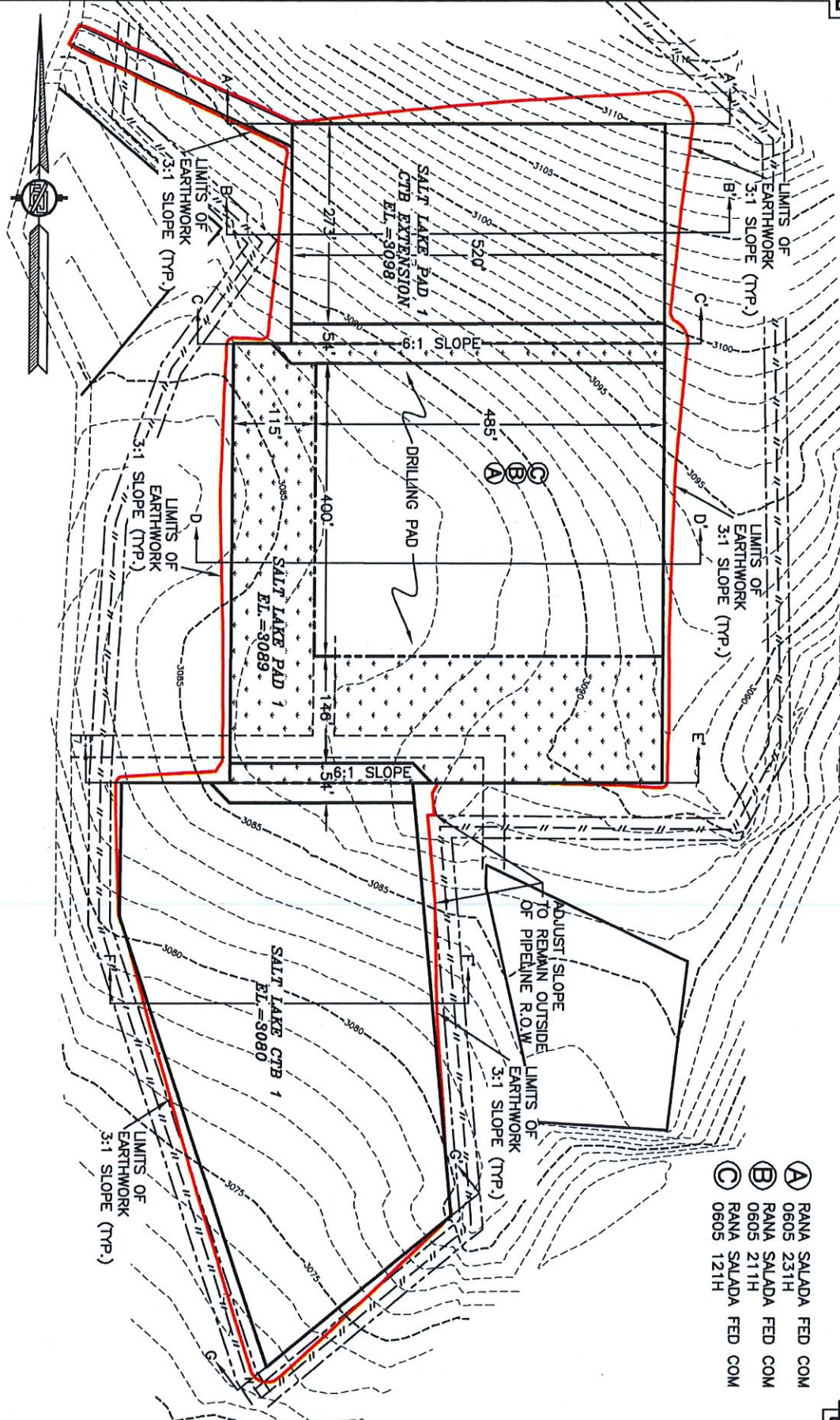
SURVEY NO. 6143B

MADRON SURVEYING, INC. 301 SOUTH CANAL (575) 234-3341 CARLSBAD, NEW MEXICO



PLAN VIEW

- Ⓐ RANA SALADA FED COM 0605 231H
- Ⓑ RANA SALADA FED COM 0605 211H
- Ⓒ RANA SALADA FED COM 0605 121H



NOVO OIL AND GAS NORTHERN DELAWARE, LLC  
PAD GRADING AND CROSS SECTIONS  
FOR RANA SALADA FED COM 0605 211H  
SECTION 1, TOWNSHIP 23 SOUTH,  
RANGE 28 EAST, N.M.P.M.  
EDDY COUNTY, STATE OF NEW MEXICO

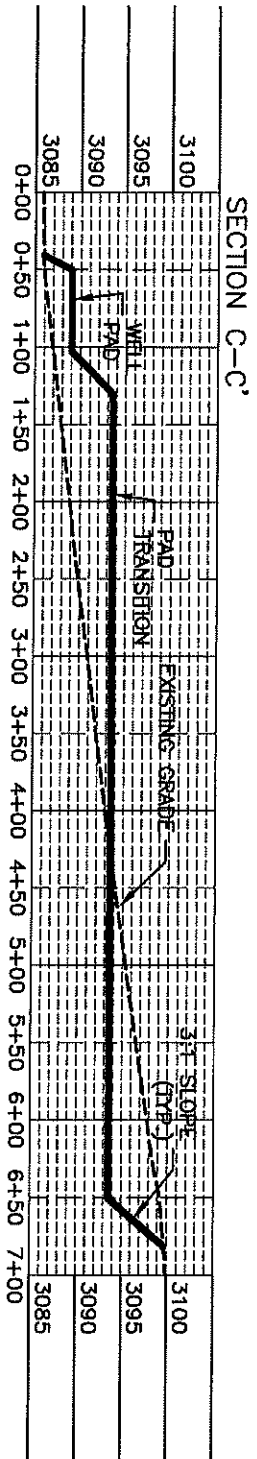
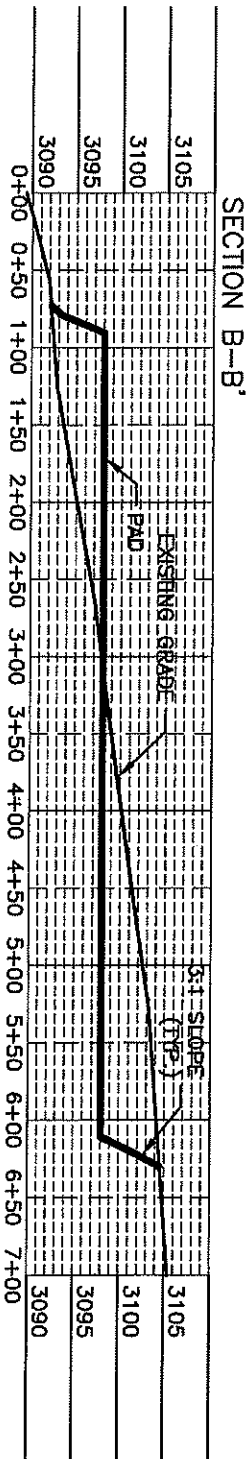
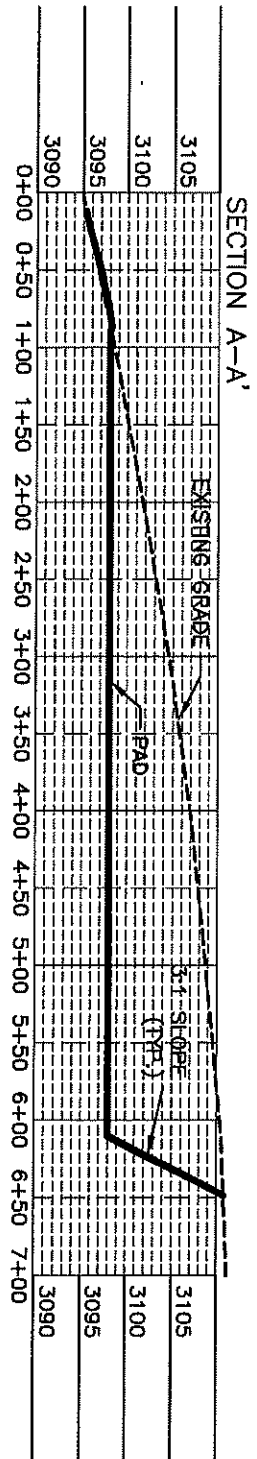
CUT	FILL	NET
46251 CU. YD	41381 CU. YD	4871 CU. YD (CUT)

EARTHWORK QUANTITIES ARE ESTIMATED

MADRON SURVEYING, INC. (575) 234-3341  
JUNE 26, 2018  
SHEET 1-4  
SURVEY NO. 6143B



# CROSS-SECTIONS



0+12 60 120 240  
SCALE 1" = 120' - 1" = 20' VER

NOVO OIL AND GAS NORTHERN DELAWARE, LLC  
PAD GRADING AND CROSS SECTIONS  
FOR RANA SALADA PAD COM 0605 211H  
SECTION 1, TOWNSHIP 23 SOUTH,  
RANGE 28 EAST, N.M.P.M.  
EDDY COUNTY, STATE OF NEW MEXICO

CUT	FILL	NET
46251 CU. YD	41381 CU. YD	4871 CU. YD (CUT)

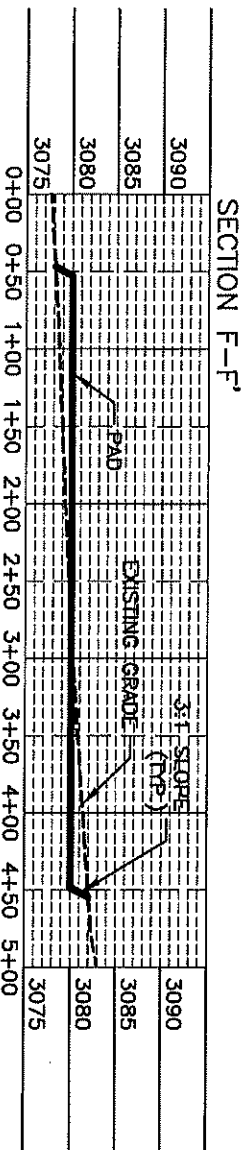
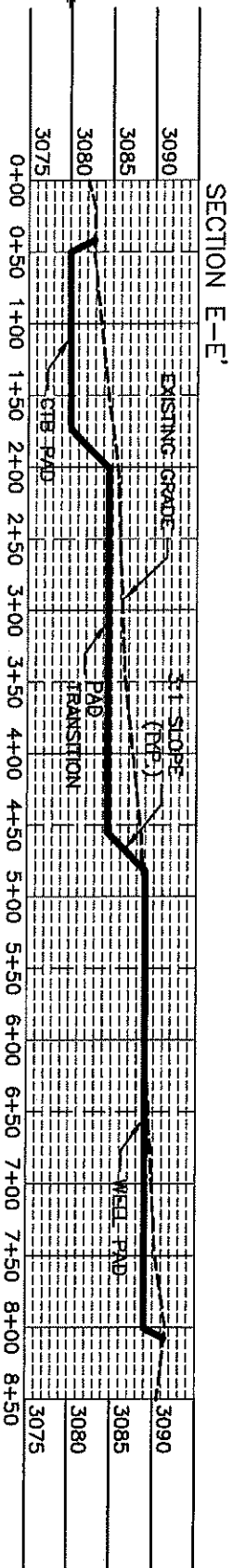
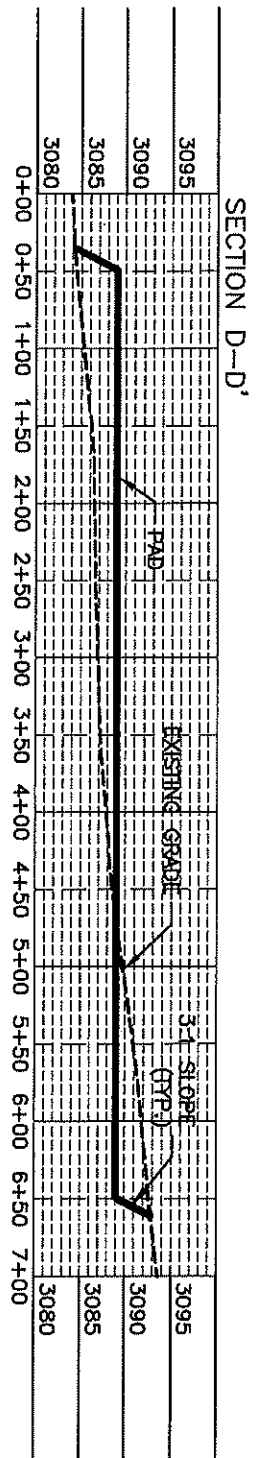
EARTHWORK QUANTITIES ARE ESTIMATED

MADRON SURVEYING, INC. JUN 26, 2018  
301 SOUTH CANAL  
(575) 234-3541

CARLSBAD, NEW MEXICO  
SHEET 2-4  
SURVEY NO. 6143B



## CROSS-SECTIONS



0+12 60 120 240  
 SCALE 1" = 120' - 1" = 20' VER

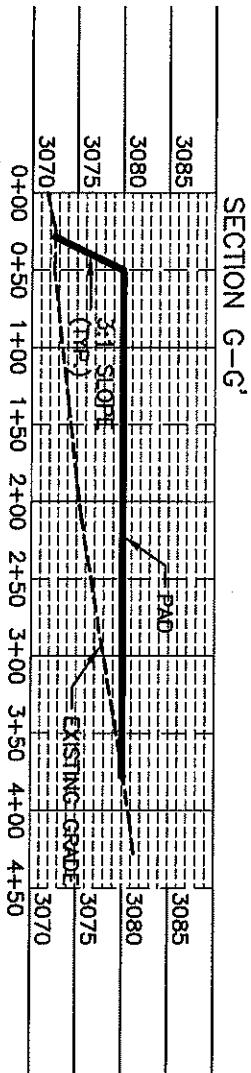
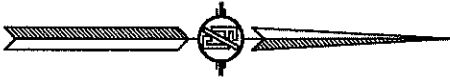
**NOVO OIL AND GAS NORTHERN DELAWARE, LLC**  
**PAD GRADING AND CROSS SECTIONS**  
**FOR RANA SALADA FED COM 0605 211H**  
 SECTION 1, TOWNSHIP 23 SOUTH,  
 RANGE 28 EAST, N.M.P.M.  
 EDDY COUNTY, STATE OF NEW MEXICO

CUT	FILL	NET
46251 CU. YD.	41381 CU. YD.	4871 CU. YD. (CUT)

EARTHWORK QUANTITIES ARE ESTIMATED



# CROSS-SECTIONS



0+12 60 120 240  
SCALE 1" = 120' - 1" = 20' VER

NOVO OIL AND GAS NORTHERN DELAWARE, LLC  
PAD GRADING AND CROSS SECTIONS  
FOR RANA SALADA PED COM 0605 211H  
SECTION 1, TOWNSHIP 23 SOUTH,  
RANGE 28 EAST, N.M.P.M.  
EDDY COUNTY, STATE OF NEW MEXICO

CUT	FILL	NET
46251 CU. YD	41381 CU. YD	4871 CU. YD (CUT)

EARTHWORK QUANTITIES ARE ESTIMATED

MADRON SURVEYING, INC. JUN 26, 2018  
301 SOUTH CAVALL  
(575) 234-3341  
CARLSBAD, NEW MEXICO

SHEET 4-4  
SURVEY NO. 6143B