



8. **Exhibit A** identifies wells in the vicinity of the proposed well, with a cross-section line running from A to A'.

9. **Exhibit A** shows that the structure dips down to the east.

10. **Exhibit B** is a Wolfcamp stratigraphic cross-section hung on the top of the Wolfcamp. The cross-section shows consistent target thickness in wells near the Jayhawk sections. The well logs on the cross-section give a representative sample of the upper Wolfcamp formation in the area and demonstrate reasonable well control. The target zone for the wells is the upper Wolfcamp as indicated by the blue line in Exhibit B. The target zone is continuous across the well unit.

11. **Exhibit C** is a gross isochore of the upper Wolfcamp formation. The map shows thickness for the "target interval" indicated in Exhibit B. The upper Wolfcamp is uniform across the proposed well unit.

12. I conclude from the attached exhibits that:

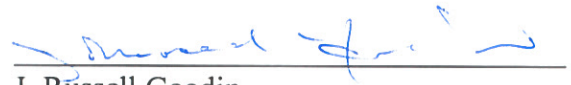
- a. The horizontal spacing and proration unit is justified from a geologic standpoint.
- b. There are no structural impediments or faulting that will interfere with horizontal development.
- c. Each quarter-quarter section in the unit will contribute more or less equally to production.

13. The preferred well orientation in this area is north-south. This is because the inferred orientation of the maximum horizontal stress is roughly east.

14. The granting of this Application is in the interests of conservation, the prevention of waste, and the protection of correlative rights.

15. The foregoing is correct and complete to the best of my knowledge and belief.

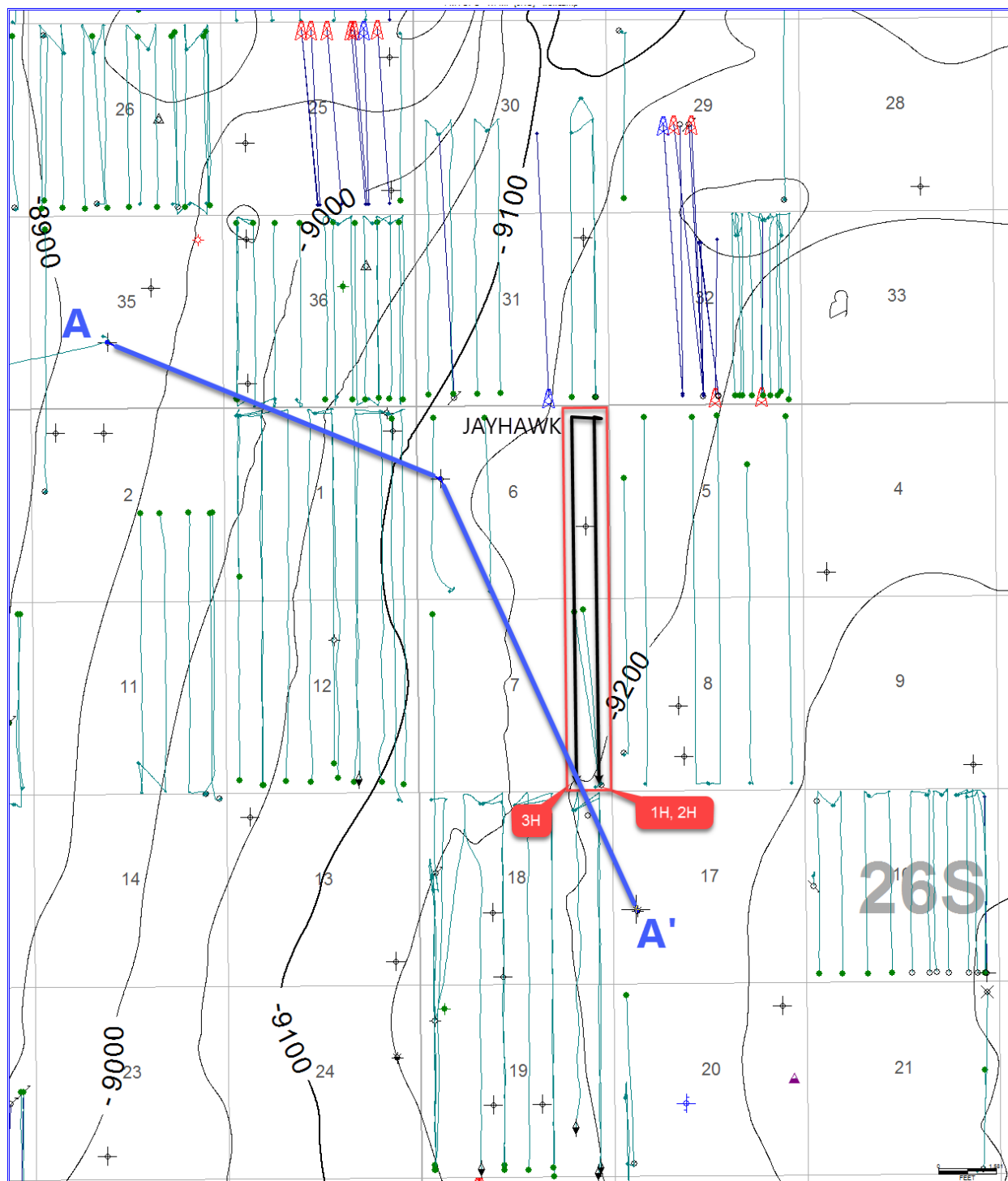
FURTHER AFFIANT SAYETH NAUGHT

  
J. Russell Goodin

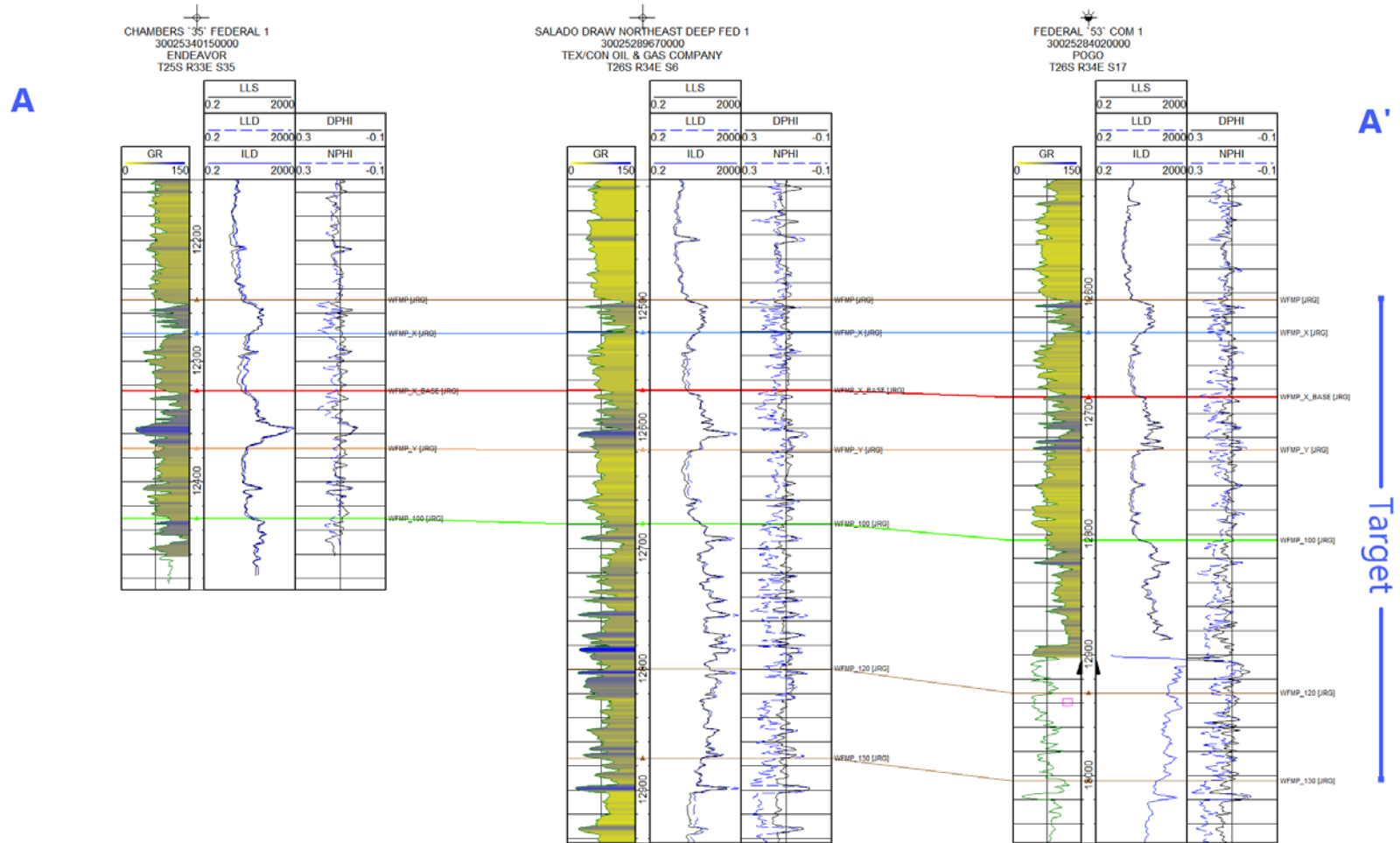
Subscribed to and sworn before me this 1<sup>st</sup> day of October ~~September~~, 2018.



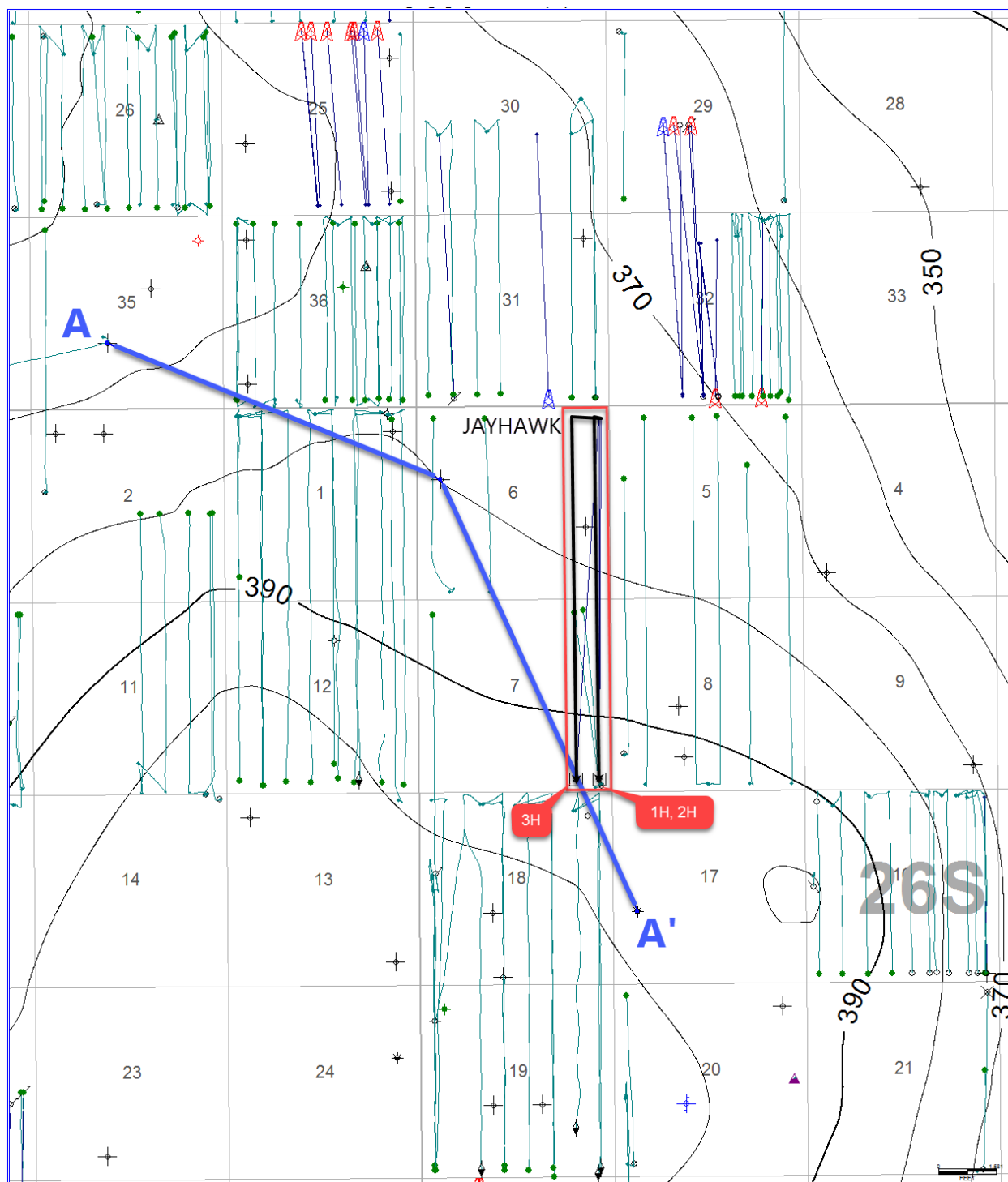
  
Notary Public



**Exhibit A:** Wolfcamp structure map. Contour interval = 50'. Cross-section indicated by blue line labeled A to A'. Red rectangle indicates unit being pooled.



**Exhibit B:** Cross-section A to A'. Stratigraphic cross-section hung on Wolfcamp top. Target interval indicated by blue line on right side of figure.



**Exhibit C:** Isochore thickness of target interval indicated on cross-section (Exhibit 2). Cross-section indicated by blue line labeled A to A'. Red rectangle indicates unit being pooled.