



FEB 28 2018 PM 02:57

February 26, 2018

Bureau of Land Management
620 E. Greene St.
Carlsbad, New Mexico 88220-6292
Attn: Mr. Chris Walls

New Mexico State Land Office
Commissioner of Public Lands
310 Old Santa Fe Trail
Santa Fe, New Mexico 87501
Attn: Ms. Marilyn Gruebel, Ph. D.

New Mexico Oil Conservation Division
1220 St. Francis
Santa Fe, New Mexico 87505
Attn: Mr. David Brooks

**Re: Nash Unit (NM70992X)
Township 23 South, Range 29 and 30 East
Eddy County, New Mexico
2017 Review of Operations and 2018 Plan of Development**

Ladies and Gentlemen,

As operator of the Nash Unit (NM70992X), and pursuant to Section 10 of the Nash Unit Agreement, XTO Energy Inc. ("XTO") hereby submits for your information a 2017 Review of Operations, and for your approval the 2018 Plan of Development.

As a prudent operator, XTO will pursue unit operations that utilize best practices for the efficient development and conservation of the natural resources to achieve the highest level of economic recovery, while focusing on the protection of correlative rights and the prevention of waste.

Below is a listing of review or plan attachments, and notification of Delaware PA Expansion:

- Current status of Existing Wells

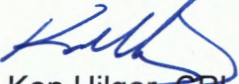
- Review of 2017 Operations, and wells drilled
- 2018 Plan of Development, and wells to be drilled including
 - Commercial Determinations to be submitted for PA expansion for successful drilling operations of the 46H and 47H
- Plats covering :
 - Delaware Participation Area, and Production Curve
 - Morrow Participation Area, and Production Curve
 - Atoka Participation Area and Production Curve

It is understood that approval of the 2018 Plan of Development (POD) is not an authorization of operations requiring specific permitting, referencing by way of example and not an all-inclusive list, drill well APD's or pipeline Rights-of-Way. Future any modification that increases the work plan of this POD will be requested by operator filing of a Supplemental plan.

If this Plan of Development meets with your approval, please advise the undersigned in writing at you earliest opportunity.

If during your review of this information you should have reservoir questions please direct same to Nathan Franka, Reservoir Engineer at (817) 885-2964. If you have geologic questions please refer same to Matthew W. Kearney, Division Geologist, at (817) 885-6725. All other inquiries may be directed to the undersigned at (817) 885-6801.

Sincerely,



Ken Hilger, CPL
Division Landman

kenneth_hilger@xtoenergy.com

Current Status of existing Unit Wells

WELL NAME	API NUMBER	LOCATION	ZONE	STATUS
Nash Unit #1	30-015-21277	H-13-23S-29E	Delaware	Producing
Nash Unit #2	30-015-21672	F-18-23S-30E	Atoka	Producing
Nash Unit #3	30-015-21781	K-12-23S-29E	Atoka	Shut-In
Nash Unit #4 SWD	30-015-21777	A-13-23S-39E	Delaware	P&A
Nash Unit #5	30-015-21800	I-13-23S-29E	Delaware	Producing
Nash Unit #6	30-015-21803	E-18-23S-30E	Delaware	Producing
Nash Unit #9	30-015-26991	B-13-23S-29E	Delaware	P&A
Nash Unit #10	30-015-26992	G-13-23S-29E	Delaware	Producing
Nash Unit #11	30-015-27520	N-12-23S-29E	Delaware	Producing
Nash Unit #12	30-015-27602	O-12-23S-29E	Delaware	Producing
Nash Unit #13	30-015-27316	K-12-23S-29E	Delaware	Producing
Nash Unit #14	30-015-27510	A-13-23S-29E	Delaware	Producing
Nash Unit #15	30-015-28049	D-13-23S-29E	Delaware	Producing
Nash Unit #19	30-015-27590	J-12-23S-29E	Delaware	Producing
Nash Unit #20	30-015-27877	D-18-23S-30E	Delaware	Producing
Nash Unit #23	30-015-28272	E-13-23S-29E	Delaware	Producing
Nash Unit #24	30-015-28271	H-14-23S-29E	Delaware	Producing
Nash Unit #25	30-015-28818	I-14-23S-29E	Delaware	Producing
Nash Unit #29 SWD	30-015-29434	J-13-23S-29E	Delaware	P&A
Nash Unit #33H	30-015-32476	M-12-23S-29E	Delaware	Producing
Nash Unit #34H	30-015-33991	J-12-23S-29E	Delaware	Producing
Nash Unit #36H	30-015-30176	K-12-23S-29E	Delaware	Producing
Nash Unit #38	30-015-29737	N-13-23S-39E	Delaware	Producing
Nash Unit #39H	30-015-36951	K-12-23S-29E	Delaware	Producing
Nash Unit #40H	30-015-37166	K-12-23S-29E	Delaware	Producing
Nash Unit #41H	30-015-37165	K-12-23S-29E	Delaware	Producing
Nash Unit #42H	30-015-37194	E-18-23S-30E	Delaware	Producing
Nash Unit #43H	30-015-42206	J-12-23S-29E	Delaware	Producing
Nash Unit #44H	30-015-42195	D-18-23S-30E	Delaware	Producing
Nash Unit #45H	30-015-42048	D-18-23S-30E	Delaware	Producing
*Nash Unit #46H	30-015-43081	C-18-23S-30E	Delaware	Producing
*Nash Unit #47H	30-015-43077	C-18-23S-30E	Delaware	Producing
Nash Unit #49H	30-015-38663	A-13-23S-29E	Delaware	Producing
Nash Unit #50H	30-015-38991	I-13-23S-29E	Delaware	Producing
Nash Unit #51H	30-015-38365	M-18-23S-30E	Delaware	Producing
Nash Unit #52	30-015-31510	C-12-23S-29E	Atoka	Producing
Nash Unit # 53	30-015-32548	K-12-23S-29E	Morrow	Producing
Nash Unit SWD #53	30-015-39400	H-13-23S-29E	Devonian	SWD active
Nash Unit #54Y	30-015-42311	E-13-23S-29E	Delaware	Producing
*Nash Unit #55H	30-015-43684	E-13-23S-29E	Delaware	Producing
Nash Unit #56H	30-015-38992	H-14-23S-29E	Delaware	Producing
Nash Unit #57H	30-015-39303	I-14-23S-29E	Delaware	Producing
Nash Unit #58H	30-015-39304	I-14-23S-29E	Delaware	Producing
*Nash Unit #60H	30-015-43874	N-13-23S-29E	Delaware	Producing

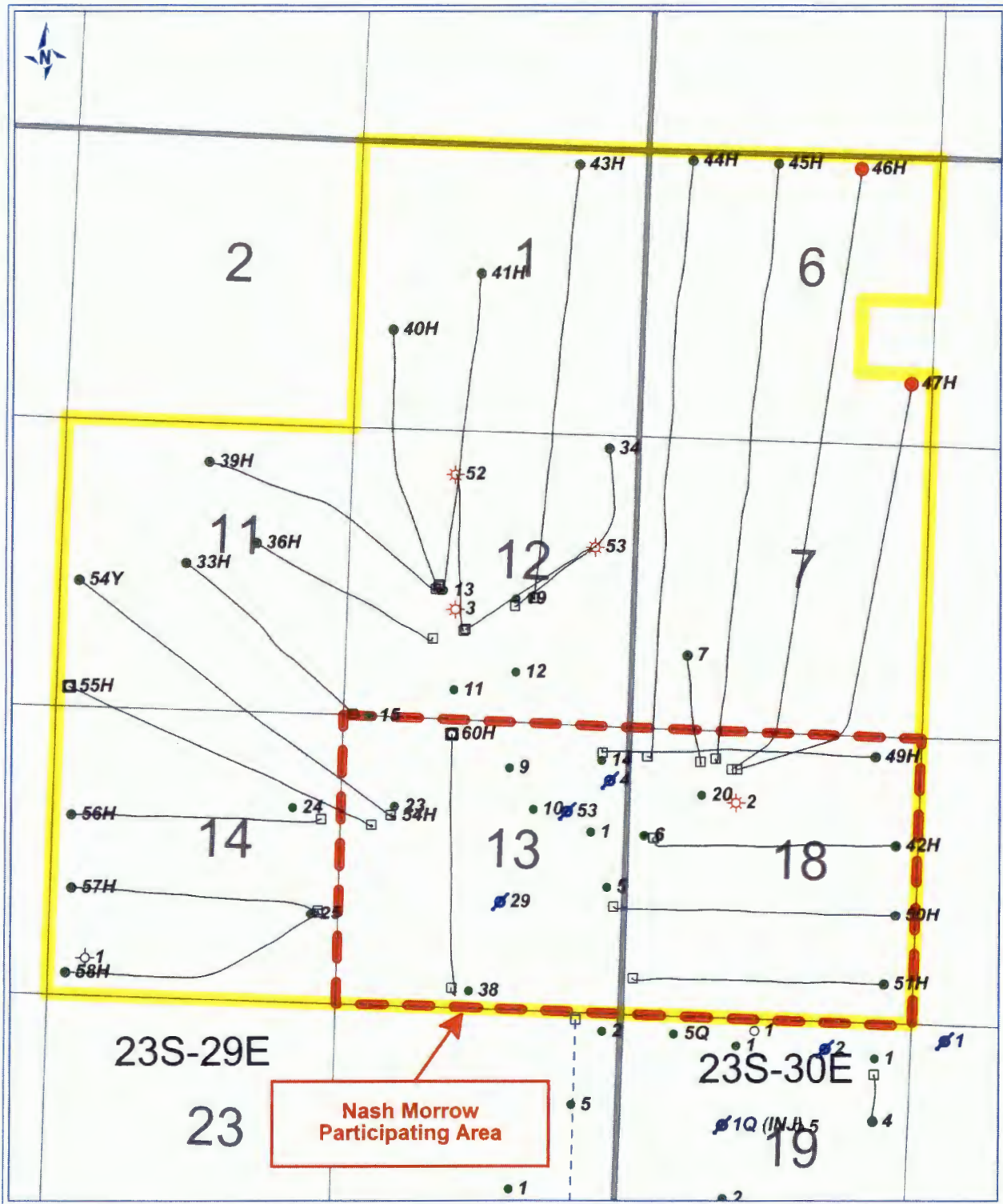
* added to list since previous report dated February 28, 2017

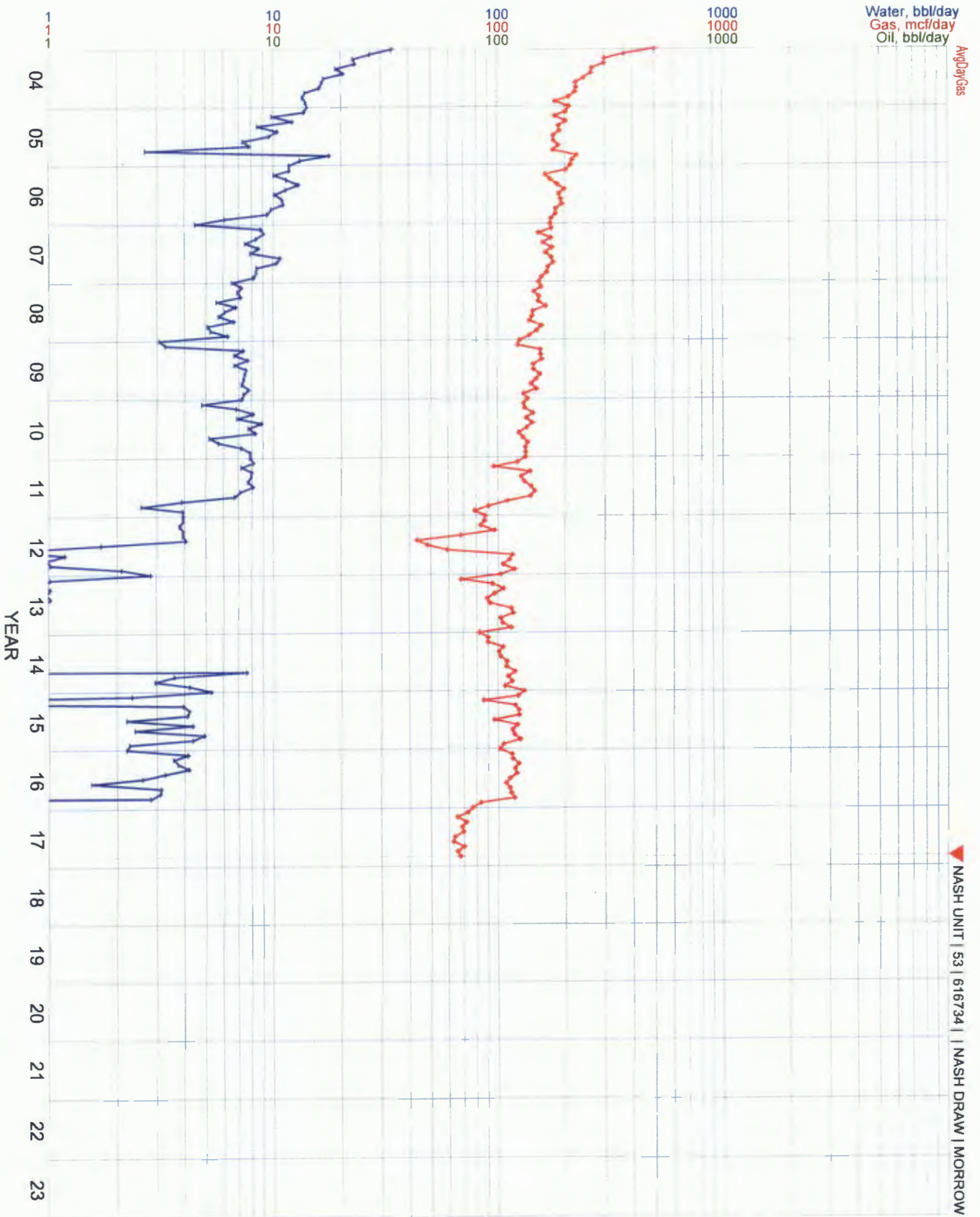
2017 Review of Operations

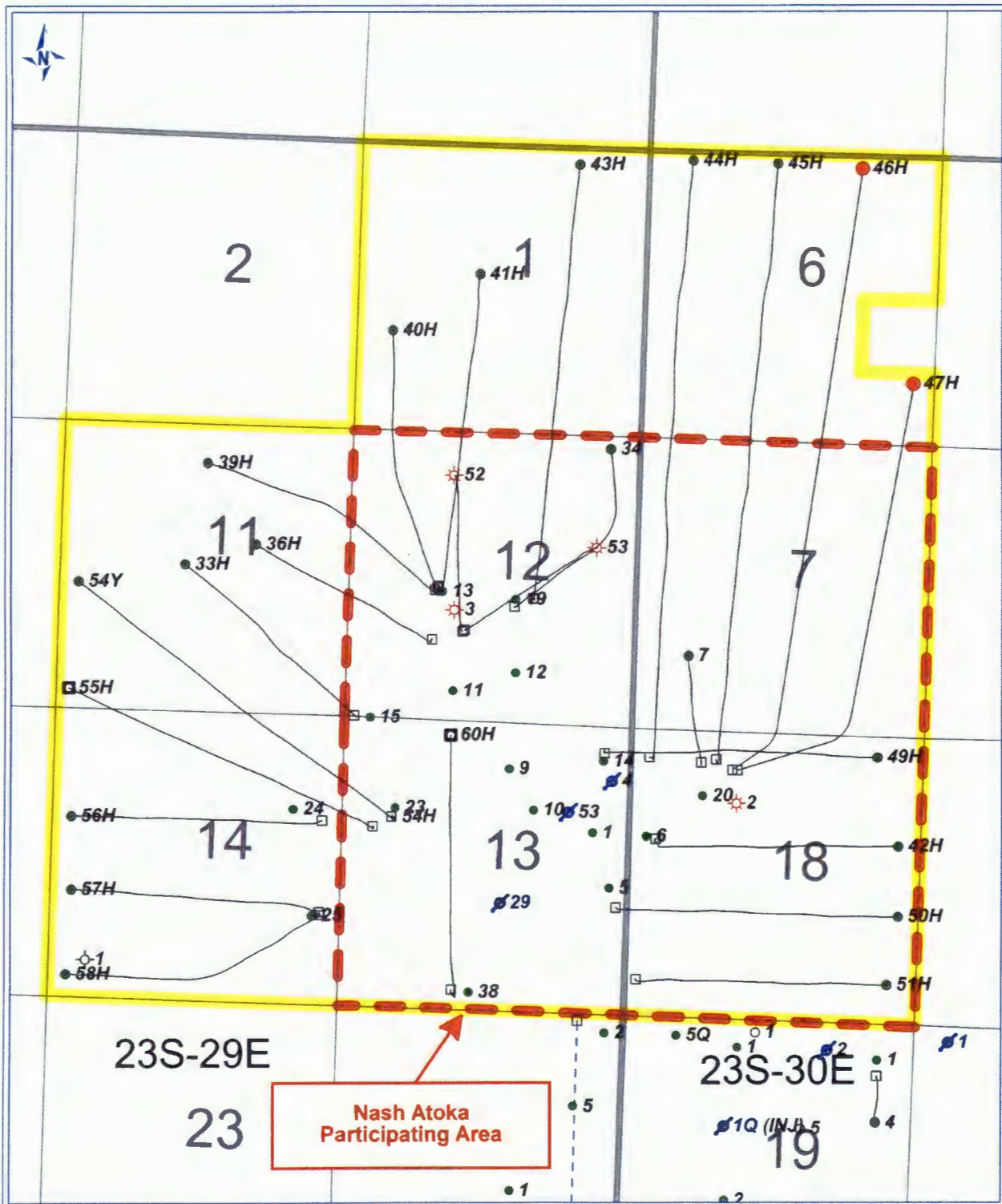
WELL NAME	API NUMBER	ZONE	YEAR DRILLED	YEAR COMPLETED	STATUS
Nash Unit #55H	30-015-43684	Delaware	2016	2017	Producing well; (began 4/24/17)
Nash Unit #46H	30-015-43081	Delaware	2017	2017	Producing well (began 9/22/17)
Nash Unit #47H	30-015-43077	Delaware	2017	2017	Producing well (began 9/21/17)
Nash Unit #60H	30-015-43874	Delaware	2107	2017	Producing well (began 4/23/17)

2018 Plan of Development

WELL NAME	API NUMBER	ZONE	STATUS
Nash Unit #3H	30-015- to be determined	Wolfcamp D, E	Permitting
Nash Unit #201H	30-015- to be determined	2 nd Bone Spring	Submitted for Permit
Nash Unit #202H	30-015- to be determined	2 nd Bone Spring	Submitted for Permit
Nash Unit #203H	30-015- to be determined	2 nd Bone Spring	Submitted for Permit
Nash Unit #204H	30-015- to be determined	2 nd Bone Spring	Submitted for Permit
Nash Unit #301H	30-015- to be determined	3 rd Bone Spring	Submitted for Permit
Nash Unit #401H	30-015- to be determined	Wolfcamp X	Submitted for Permit







AngloGas
H2O

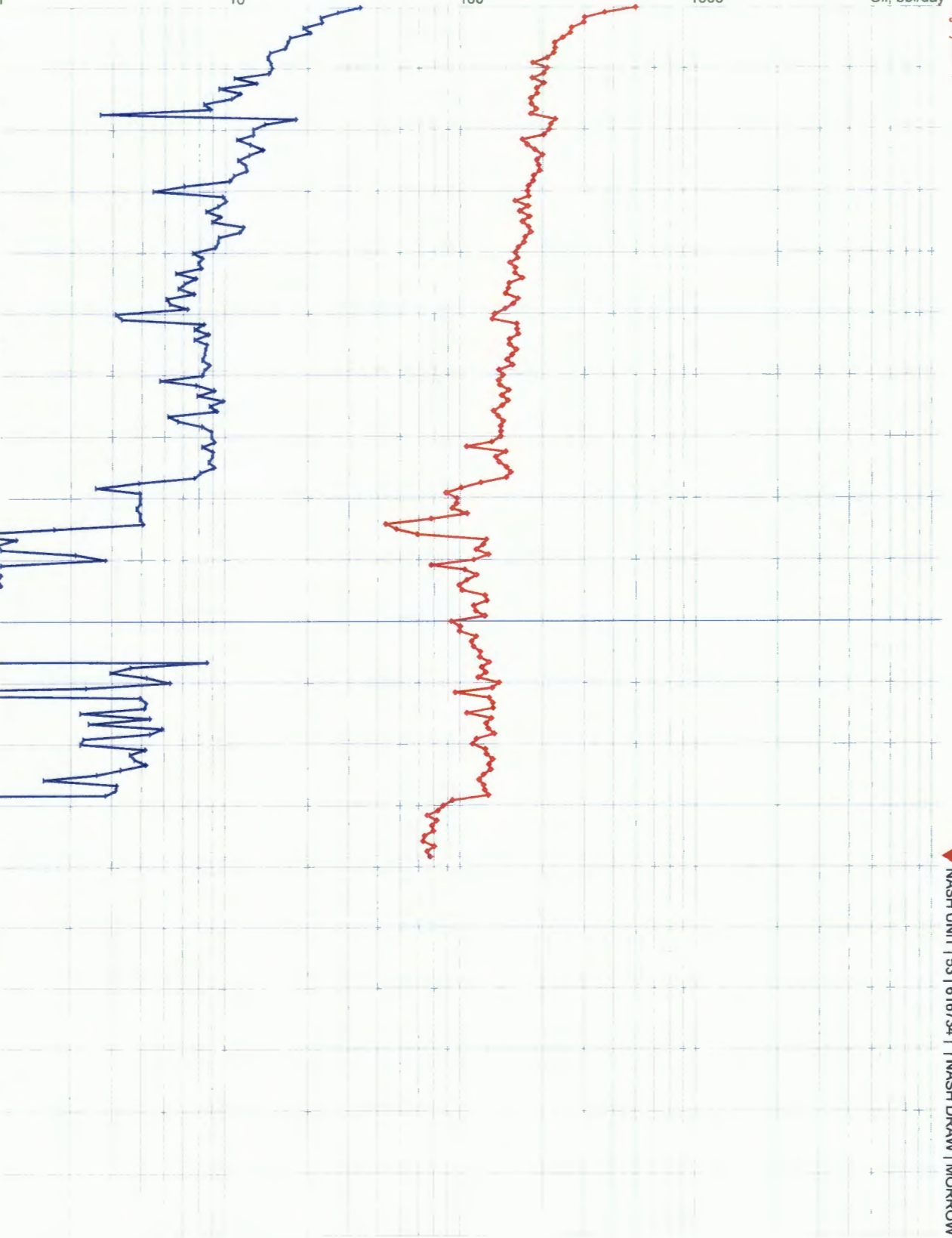
Water, bbl/day
Gas, mcf/day
Oil, bbl/day

1000
1000
1000

100
100
100

10
10
10

YEAR
04
05
06
07
08
09
10
11
12
13
14
15
16
17
18
19
20
21
22
23



▲ NASH UNIT | 53 | 616734 | NASH DRAW | MORROW

Nash Unit

The map displays the Nash Unit with various well locations and production data. The unit is divided into several sections, with a large area outlined in red and yellow dashed lines. The sections are labeled with numbers: 1, 2, 6, 7, 11, 12, 13, 14, 18, and 23. The map also shows the Nash Delaware Participating Area, which is outlined in red and yellow dashed lines. The map includes a grid with coordinates 23S-29E and 23S-30E. The map also shows the Nash Delaware Participating Area, which is outlined in red and yellow dashed lines. The map includes a grid with coordinates 23S-29E and 23S-30E.

Well Locations and Production Data:

- Well 1:** 41H, 43H, 44H, 45H, 46H, 47H
- Well 2:** 39H, 36H, 33H, 54Y, 55H, 56H, 57H, 58H
- Well 3:** 40H, 52, 53, 13, 3, 11, 12, 15, 24, 23H, 25, 38
- Well 4:** 54Y, 55H, 56H, 57H, 58H
- Well 5:** 49H, 20, 2, 42H, 50H, 51H
- Well 6:** 41H, 43H, 44H, 45H, 46H, 47H
- Well 7:** 40H, 52, 53, 13, 3, 11, 12, 15, 24, 23H, 25, 38
- Well 11:** 39H, 36H, 33H, 54Y, 55H, 56H, 57H, 58H
- Well 12:** 41H, 43H, 44H, 45H, 46H, 47H
- Well 13:** 40H, 52, 53, 13, 3, 11, 12, 15, 24, 23H, 25, 38
- Well 14:** 54Y, 55H, 56H, 57H, 58H
- Well 18:** 49H, 20, 2, 42H, 50H, 51H
- Well 23:** 23S-29E, 23S-30E

Nash Delaware Participating Area

23S-29E

23S-30E

19

1Q (INJ) 5

