



## NMOCD – Burton Flat – Lone Tree Draw 3BSSS Hearings (additional exhibits)

Sections 14-13, 21S-27E

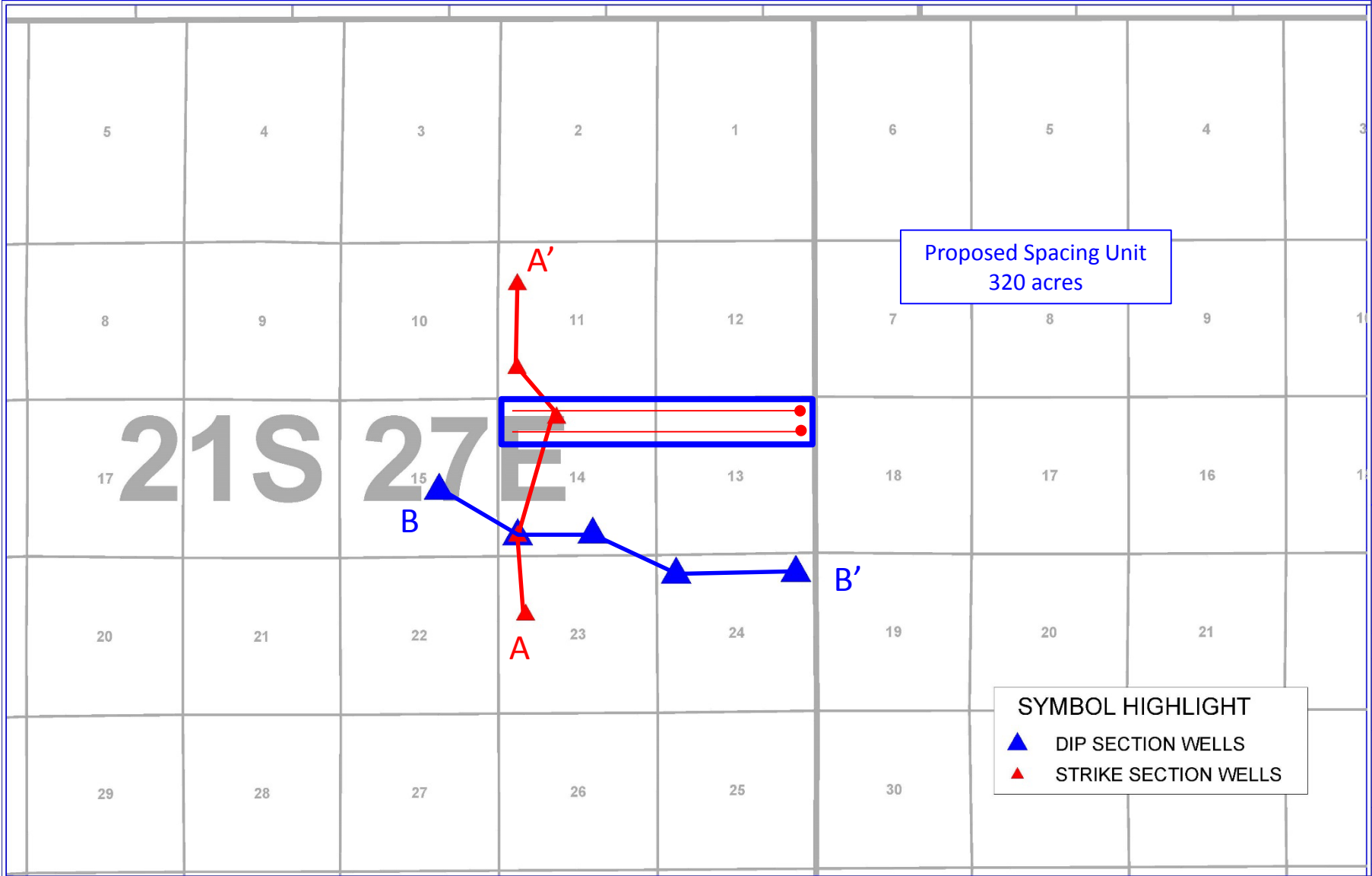
Geological Exhibits, Docket 08-19: Cases 20157, 20158 & 20159

Delaware Basin – Eddy County, NM

Susan Estes – 3/4/2019

# 3<sup>rd</sup> Bone Spring

## Locator Map w/Line of Sections



Devon Energy Corporation  
Docket # 08-19  
Case Numbers 20157  
February 21, 2019  
Exhibit # C-1A

Lone Tree Draw 14-13 State Com 331H  
Lone Tree Draw 14-13 State Com 332H

Devon Energy

Docket # 08-19 , Case #

Exhibit #

Locator Map w/Line of X-Sections

Eddy County, New Mexico

SYMBOL HIGHLIGHT

DIP SECTION WELLS

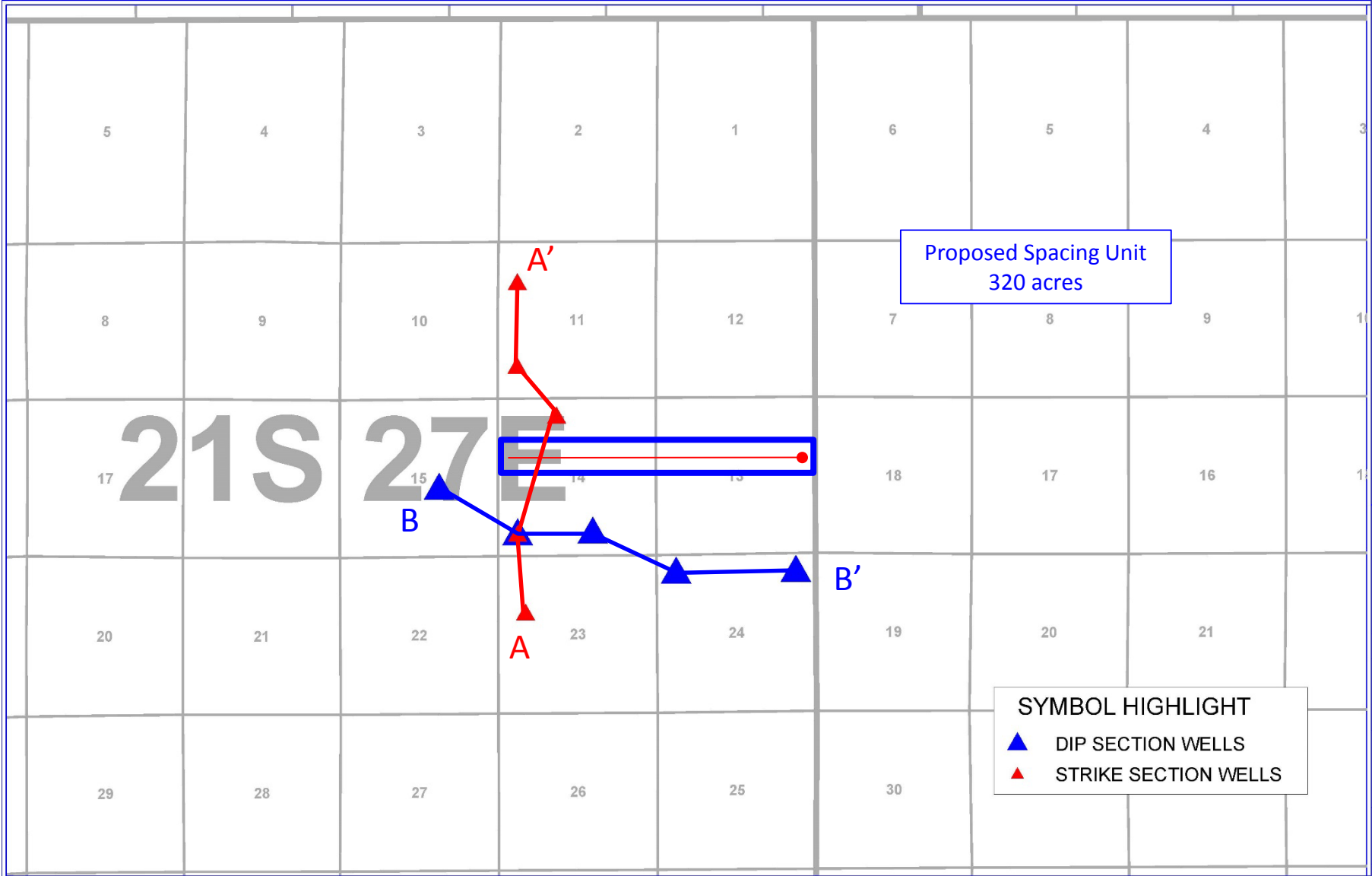
STRIKE SECTION WELLS

By: Susan Estes

March 4, 2019

# 3<sup>rd</sup> Bone Spring

## Locator Map w/Line of Sections



Devon Energy Corporation  
Docket # 08-19  
Case Numbers 20158  
February 21, 2019  
Exhibit # C-2A

Lone Tree Draw 14-13 State Com 333H

Devon Energy

Docket # 08-19 , Case #

Exhibit #

Locator Map w/Line of X-Sections

Eddy County, New Mexico

SYMBOL HIGHLIGHT

DIP SECTION WELLS

STRIKE SECTION WELLS

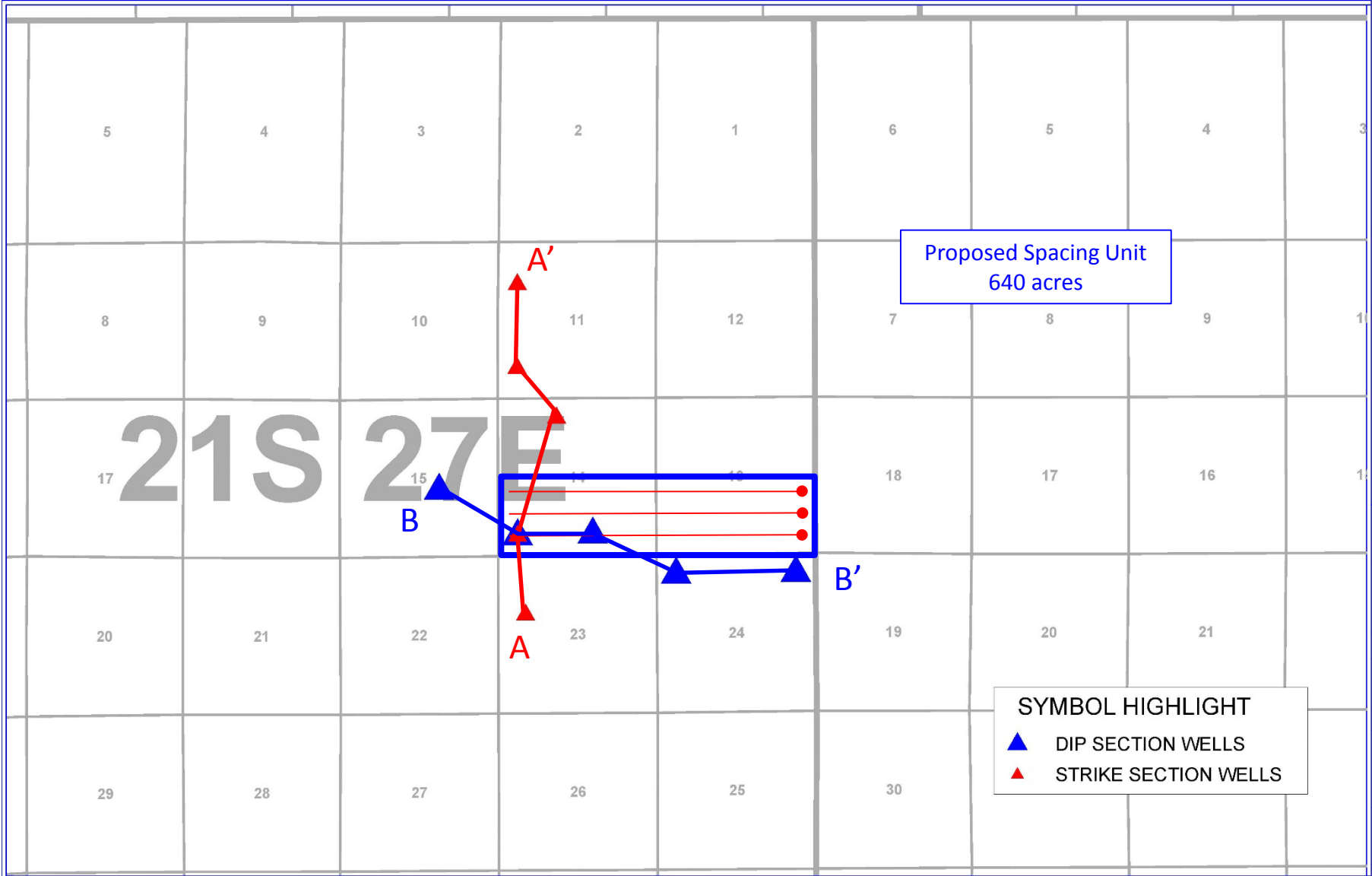
By: Susan Estes

0 3,185 6,370  
FEET

March 4, 2019

# 3<sup>rd</sup> Bone Spring

## Locator Map w/Line of Sections



Devon Energy Corporation  
Docket # 08-19  
Case Numbers 20159  
February 21, 2019  
Exhibit # C-3A

Lone Tree Draw 14-13 State Com 334H  
Lone Tree Draw 14-13 State Com 335H  
Lone Tree Draw 14-13 State Com 336H

**SYMBOL HIGHLIGHT**  
▲ DIP SECTION WELLS  
▲ STRIKE SECTION WELLS

Devon Energy

Docket # 08-19 , Case #

Exhibit #

Locator Map w/Line of X-Sections

Eddy County, New Mexico

SYMBOL HIGHLIGHT

▲ DIP SECTION WELLS

▲ STRIKE SECTION WELLS

By: Susan Estes

0

3,185

6,370

FEET

March 4, 2019