

Additional Information

Garcia, John A, EMNRD

From: Deana M. Bennett <dmb@modrall.com>
Sent: Wednesday, February 26, 2020 11:30 AM
To: Garcia, John A, EMNRD
Subject: [EXT] RE: Missing Info
Attachments: Ripley Exhibit A Case No. 20885 (W3695974x7A92D).docx; Ripley Fed Exhibit A for Case No. 20883 (W3559403x7A92D).docx; Ripley Fed Exhibit A for Case No. 20884 (W3559404x7A92D).docx; Ripley Revised C-102s (W3696625x7A92D).pdf

Hello John,

Attached please find the Exhibit As for Marathon's Ripley cases, case numbers 20883-20885. I have also attached five updated C-102s (in a single pdf). The updated C-102s are for the following wells (all part of case number 20885):

- Ripley 35 WXY Fed Com 3H
- Ripley 35 WA Fed Com 4H
- Ripley 35 WXY Fed Com 5H
- Ripley 35 WA Fed Com 9H
- Ripley 35 WD Fed Com 8H

These C-102s were revised to correct the BHL primarily.

Please let me know if you have any questions.

Deana



Deana M. Bennett
Lawyer
Modrall Sperling | www.modrall.com
P.O. Box 2168 | Albuquerque, NM 87103-2168
500 4th St. NW, Ste. 1000 | Albuquerque, NM 87102
D: 505.848.1834 | O: 505.848.1800

From: Garcia, John A, EMNRD <JohnA.Garcia@state.nm.us>
Sent: Tuesday, February 25, 2020 3:08 PM
To: Deana M. Bennett <dmb@modrall.com>
Subject: Missing Info

EXTERNAL EMAIL: Please do not click any links or open any attachments unless you trust the sender and are expecting this message and know the content is safe.

Deana,

I was following up to see if you could send Exhibit A or the Checklist for the following cases.

Case Number	Applicant	Case Types	Heard	Examiner	Reviewer	Status
20883	MARATHON OIL PERMIAN LLC [372098]	Compulsory Pooling (Forced Pooling) [CP]	11/14/2019	Lowe	John	In Progress
20884	MARATHON OIL PERMIAN LLC [372098]	Compulsory Pooling (Forced Pooling) [CP]	11/14/2019	Lowe	John	In Progress
20885	MARATHON OIL PERMIAN LLC [372098]	Compulsory Pooling (Forced Pooling) [CP]	11/14/2019	Lowe	John	In Progress
20982	Franklin Mountain Energy LLC [373910]	Compulsory Pooling (Forced Pooling) [CP]	1/9/2020	Rose-Coss	John	In Progress
20983	Franklin Mountain Energy LLC [373910]	Compulsory Pooling (Forced Pooling) [CP]	1/9/2020	Rose-Coss	John	In Progress
20984	Franklin Mountain Energy LLC [373910]	Compulsory Pooling (Forced Pooling) [CP]	1/9/2020	Rose-Coss	John	In Progress

Thank you,

John Garcia

Petroleum Specialist

Oil Conservation Division

1220 South St. Francis Drive

Santa Fe, New Mexico 87505

505-476-3441



This e-mail may be a confidential attorney-client communication. If you received it in error, please delete it without forwarding it to others and notify the sender of the error.

District I
1625 N. French Dr., Hobbs, NM 88240
Phone: (575) 393-6161 Fax: (575) 393-0720
District II
811 S. First St., Artesia, NM 88210
Phone: (575) 748-1283 Fax: (575) 748-9720
District III
1000 Rio Brazos Road, Aztec, NM 87410
Phone: (505) 334-6178 Fax: (505) 334-6170
District IV
1220 S. St. Francis Dr., Santa Fe, NM 87505
Phone: (505) 476-3460 Fax: (505) 476-3462

State of New Mexico
Energy, Minerals & Natural Resources Department
OIL CONSERVATION DIVISION
1220 South St. Francis Dr.
Santa Fe, NM 87505

Form C-102
Revised August 1, 2011
Submit one copy to appropriate
District Office

☐ AMENDED REPORT

WELL LOCATION AND ACREAGE DEDICATION PLAT

¹ API Number	² Pool Code	³ Pool Name
	98220	PURPLE SAGE; WOLFCAMP (GAS)
⁴ Property Code	⁵ Property Name	⁶ Well Number
	RIPLEY : 35 WXY FED COM	3H
⁷ OGRID No.	⁸ Operator Name	⁹ Elevation
372098	MARATHON OIL PERMIAN LLC	2956'

¹⁰ Surface Location

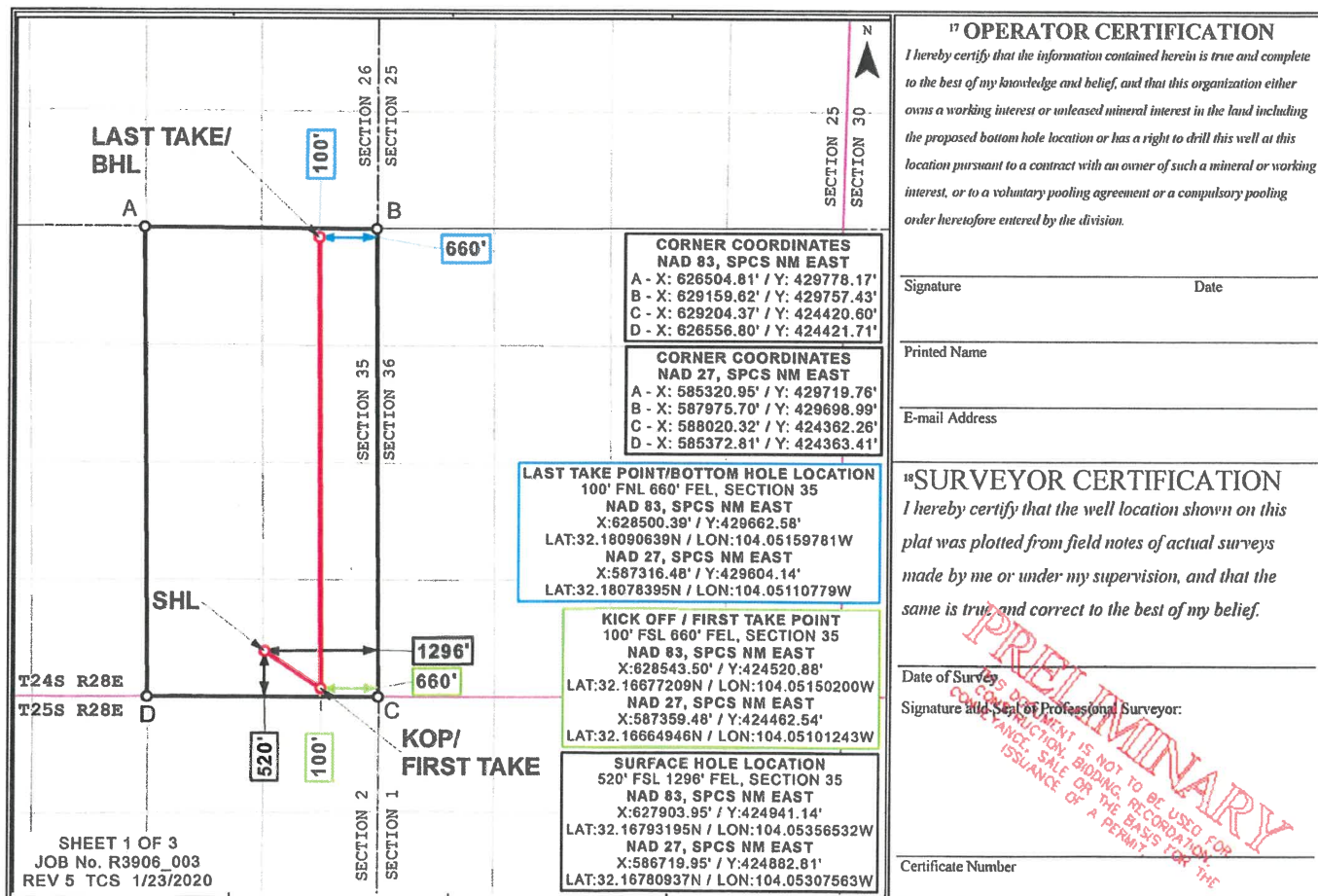
UL or lot no.	Section	Township	Range	Lot Idn	Feet from the	North/South line	Feet from the	East/West line	County
P	35	24S	28E		520	SOUTH	1296	EAST	EDDY

¹¹ Bottom Hole Location If Different From Surface

UL or lot no.	Section	Township	Range	Lot Idn	Feet from the	North/South line	Feet from the	East/West line	County
A	35	24S	28E		100	NORTH	660	EAST	EDDY

¹² Dedicated Acres	¹³ Joint or Infill	¹⁴ Consolidation Code	¹⁵ Order No.
320.0			

No allowable will be assigned to this completion until all interests have been consolidated or a non-standard unit has been approved by the division.



Distances/areas relative to NAD 83 Combined Scale Factor: 0.9997778 Convergence Angle: 00°08'28.56001"

District I
1625 N. French Dr., Hobbs, NM 88240
Phone: (575) 393-6161 Fax: (575) 393-0720
District II
811 S. First St., Artesia, NM 88210
Phone: (575) 748-1283 Fax: (575) 748-9720
District III
1000 Rio Brazos Road, Aztec, NM 87410
Phone: (505) 334-6178 Fax: (505) 334-6170
District IV
1220 S. St. Francis Dr., Santa Fe, NM 87505
Phone: (505) 476-3460 Fax: (505) 476-3462

State of New Mexico
Energy, Minerals & Natural Resources Department
OIL CONSERVATION DIVISION
1220 South St. Francis Dr.
Santa Fe, NM 87505

Form C-102
Revised August 1, 2011
Submit one copy to appropriate
District Office

☐ AMENDED REPORT

WELL LOCATION AND ACREAGE DEDICATION PLAT

¹ API Number	² Pool Code 98220	³ Pool Name PURPLE SAGE; WOLFCAMP (GAS)
⁴ Property Code	⁵ Property Name RIPLEY : 35 WA FED COM	⁶ Well Number 4H
⁷ OGRID No. 372098	⁸ Operator Name MARATHON OIL PERMIAN LLC	⁹ Elevation 2955'

¹⁰ Surface Location

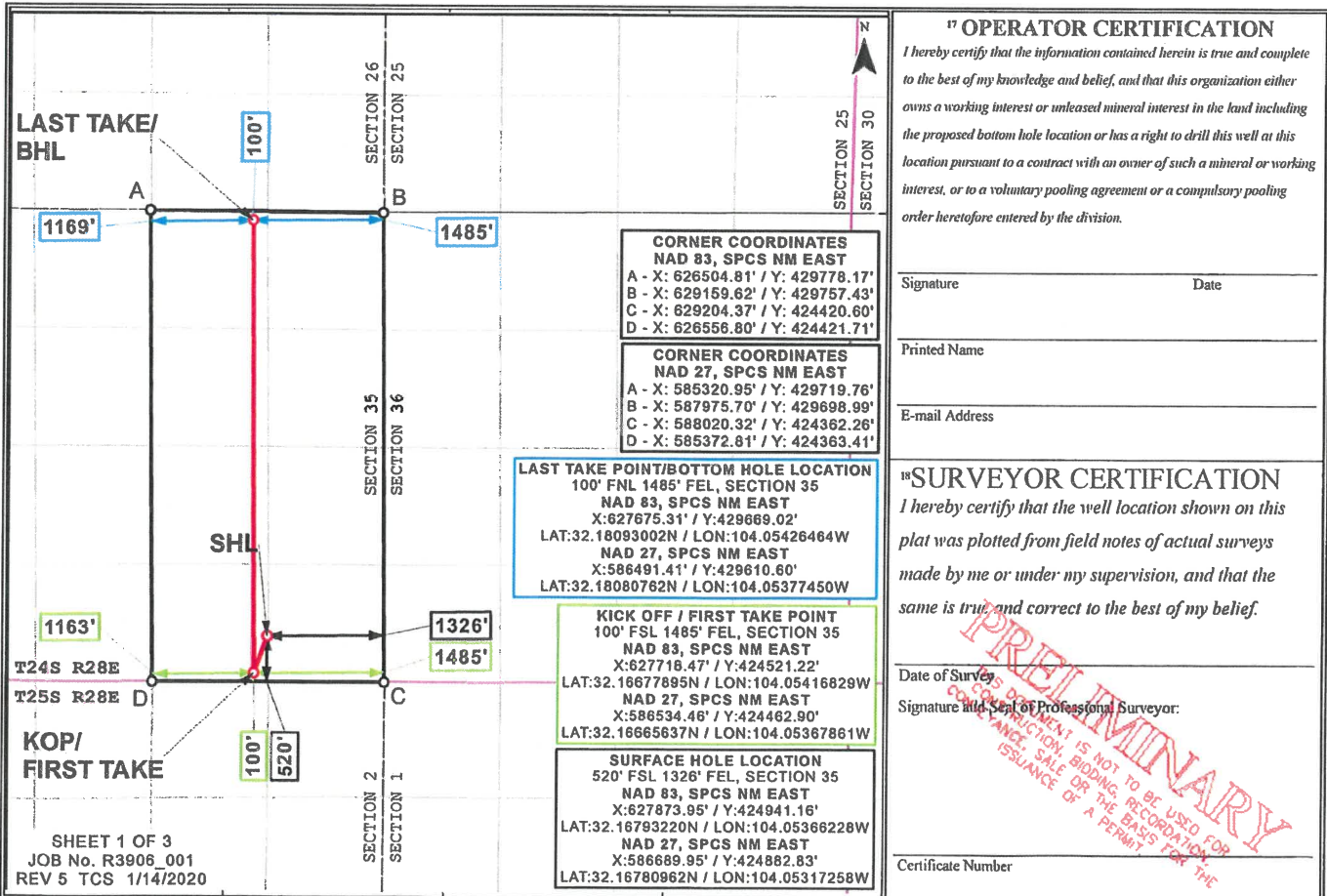
UL or lot no.	Section	Township	Range	Lot Idn	Feet from the	North/South line	Feet from the	East/West line	County
O	35	24S	28E		520	SOUTH	1326	EAST	EDDY

¹¹ Bottom Hole Location If Different From Surface

UL or lot no.	Section	Township	Range	Lot Idn	Feet from the	North/South line	Feet from the	East/West line	County
B	35	24S	28E		100	NORTH	1485	EAST	EDDY

¹² Dedicated Acres 320.0	¹³ Joint or Infill	¹⁴ Consolidation Code	¹⁵ Order No.
--	-------------------------------	----------------------------------	-------------------------

No allowance will be assigned to this completion until all interests have been consolidated or a non-standard unit has been approved by the division.



Distances/areas relative to NAD 83 Combined Scale Factor: 0.9997778 Convergence Angle: 00°08'28.56001"

District I
1625 N. French Dr., Hobbs, NM 88240
Phone: (575) 393-6161 Fax: (575) 393-0720
District II
811 S. First St., Artesia, NM 87410
Phone: (575) 748-1283 Fax: (575) 748-9720
District III
1000 Rio Brazos Road, Aztec, NM 87410
Phone: (505) 334-6178 Fax: (505) 334-6170
District IV
1220 S. St. Francis Dr., Santa Fe, NM 87505
Phone: (505) 476-3460 Fax: (505) 476-3462

State of New Mexico
Energy, Minerals & Natural Resources Department
OIL CONSERVATION DIVISION
1220 South St. Francis Dr.
Santa Fe, NM 87505

Form C-102
Revised August 1, 2011
Submit one copy to appropriate
District Office
☐ AMENDED REPORT

WELL LOCATION AND ACREAGE DEDICATION PLAT

¹ API Number	² Pool Code 98220	³ Pool Name PURPLE SAGE; WOLFCAMP (GAS)
⁴ Property Code	⁵ Property Name RIPLEY 35 WXY FED COM	⁶ Well Number 5H
⁷ OGRID No. 372098	⁸ Operator Name MARATHON OIL PERMIAN LLC	⁹ Elevation 2956'

¹⁰ Surface Location

UL or lot no.	Section	Township	Range	Lot Idn	Feet from the	North/South line	Feet from the	East/West line	County
O	35	24S	28E		520	SOUTH	1356	EAST	EDDY

¹¹ Bottom Hole Location If Different From Surface

UL or lot no.	Section	Township	Range	Lot Idn	Feet from the	North/South line	Feet from the	East/West line	County
B	35	24S	28E		100	NORTH	2310	EAST	EDDY
¹² Dedicated Acres 320.0	¹³ Joint or Infill	¹⁴ Consolidation Code	¹⁵ Order No.						

No allowable will be assigned to this completion until all interests have been consolidated or a non-standard unit has been approved by the division.

<p>SHEET 1 OF 3 JOB No. R3906_002 REV 5 TCS 1/14/2020</p>	<p>17 OPERATOR CERTIFICATION I hereby certify that the information contained herein is true and complete to the best of my knowledge and belief, and that this organization either owns a working interest or unleased mineral interest in the land including the proposed bottom hole location or has a right to drill this well at this location pursuant to a contract with an owner of such a mineral or working interest, or to a voluntary pooling agreement or a compulsory pooling order heretofore entered by the division.</p> <p>Signature _____ Date _____</p> <p>Printed Name _____</p> <p>E-mail Address _____</p>
	<p>18 SURVEYOR CERTIFICATION I hereby certify that the well location shown on this plat was plotted from field notes of actual surveys made by me or under my supervision, and that the same is true and correct to the best of my belief.</p> <p>Date of Survey _____</p> <p>Signature and Seal of Professional Surveyor: _____</p> <p>Certificate Number _____</p>
	<p>CORNER COORDINATES NAD 83, SPCS NM EAST A - X: 626504.81' / Y: 429778.17' B - X: 629159.62' / Y: 429757.43' C - X: 629204.37' / Y: 424420.60' D - X: 626556.80' / Y: 424421.71'</p> <p>CORNER COORDINATES NAD 27, SPCS NM EAST A - X: 585320.95' / Y: 429719.76' B - X: 587975.70' / Y: 429698.99' C - X: 588020.32' / Y: 424362.26' D - X: 585372.81' / Y: 424363.41'</p>
	<p>LAST TAKE POINT/BOTTOM HOLE LOCATION 100' FNL 2310' FEL, SECTION 35 NAD 83, SPCS NM EAST X: 626850.22' / Y: 429675.47' LAT: 32.18095360N / LON: 104.05693146W NAD 27, SPCS NM EAST X: 585666.35' / Y: 429617.06' LAT: 32.18083124N / LON: 104.05644121W</p> <p>KICK OFF / FIRST TAKE POINT 100' FSL 2310' FEL, SECTION 35 NAD 83, SPCS NM EAST X: 626893.44' / Y: 424521.57' LAT: 32.16678575N / LON: 104.05683459W NAD 27, SPCS NM EAST X: 585709.45' / Y: 424463.26' LAT: 32.16666321N / LON: 104.05634479W</p> <p>SURFACE HOLE LOCATION 520' FSL 1356' FEL, SECTION 35 NAD 83, SPCS NM EAST X: 627843.95' / Y: 424941.17' LAT: 32.16793245N / LON: 104.05375924W NAD 27, SPCS NM EAST X: 586659.95' / Y: 424882.84' LAT: 32.16780987N / LON: 104.05326953W</p>

Distances/areas relative to NAD 83 Combined Scale Factor: 0.9997778 Convergence Angle: 00°08'28.56001"

District I
1625 N. French Dr., Hobbs, NM 88240
Phone: (575) 393-6161 Fax: (575) 393-0720
District II
811 S. First St., Artesia, NM 88210
Phone: (575) 748-1283 Fax: (575) 748-9720
District III
1000 Rio Brazos Road, Aztec, NM 87410
Phone: (505) 334-6178 Fax: (505) 334-6170
District IV
1220 S. St. Francis Dr., Santa Fe, NM 87505
Phone: (505) 476-3460 Fax: (505) 476-3462

State of New Mexico
Energy, Minerals & Natural Resources Department
OIL CONSERVATION DIVISION
1220 South St. Francis Dr.
Santa Fe, NM 87505

Form C-102
Revised August 1, 2011
Submit one copy to appropriate
District Office
☐ AMENDED REPORT

WELL LOCATION AND ACREAGE DEDICATION PLAT

¹ API Number	² Pool Code 98220	³ Pool Name PURPLE SAGE; WOLFCAMP (GAS)
⁴ Property Code	⁵ Property Name RIPLEY 35 WA FED COM	⁶ Well Number 9H
⁷ OGRID No. 372098	⁸ Operator Name MARATHON OIL PERMIAN LLC	⁹ Elevation 2956'

¹⁰ Surface Location

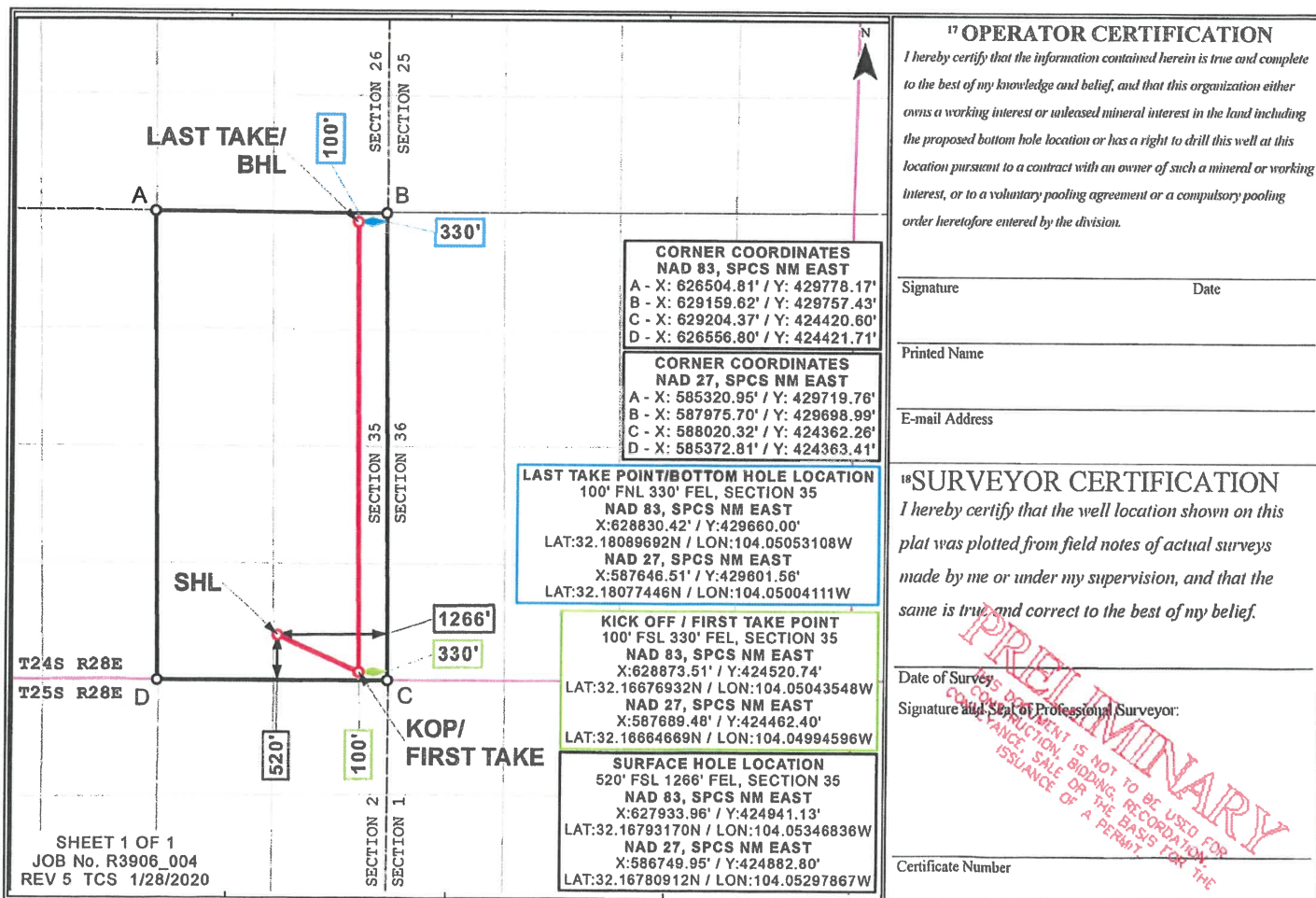
UL or lot no.	Section	Township	Range	Lot Idn	Feet from the	North/South line	Feet from the	East/West line	County
P	35	24S	28E		520	SOUTH	1266	EAST	EDDY

¹¹ Bottom Hole Location If Different From Surface

UL or lot no.	Section	Township	Range	Lot Idn	Feet from the	North/South line	Feet from the	East/West line	County
A	35	24S	28E		100	NORTH	330	EAST	EDDY

¹² Dedicated Acres 320.0	¹³ Joint or Infill	¹⁴ Consolidation Code	¹⁵ Order No.
--	-------------------------------	----------------------------------	-------------------------

No allowable will be assigned to this completion until all interests have been consolidated or a non-standard unit has been approved by the division.



District I
1625 N. French Dr., Hobbs, NM 88240
Phone: (575) 393-6161 Fax: (575) 393-0720
District II
811 S. First St., Artesia, NM 88210
Phone: (575) 748-1283 Fax: (575) 748-9720
District III
1000 Rio Brazos Road, Aztec, NM 87410
Phone: (505) 334-6178 Fax: (505) 334-6170
District IV
1220 S. St. Francis Dr., Santa Fe, NM 87505
Phone: (505) 476-3460 Fax: (505) 476-3462

State of New Mexico
Energy, Minerals & Natural Resources Department
OIL CONSERVATION DIVISION
1220 South St. Francis Dr.
Santa Fe, NM 87505

Form C-102
Revised August 1, 2011
Submit one copy to appropriate
District Office
☐ AMENDED REPORT

WELL LOCATION AND ACREAGE DEDICATION PLAT

¹ API Number	² Pool Code 98220	³ Pool Name PURPLE SAGE; WOLFCAMP (GAS)
⁴ Property Code	⁵ Property Name RIPLEY 35 WD FED COM	⁶ Well Number 8H
⁷ OGRID No. 372098	⁸ Operator Name MARATHON OIL PERMIAN LLC	⁹ Elevation 2955'

¹⁰ Surface Location

UL or lot no.	Section	Township	Range	Lot Idn	Feet from the	North/South line	Feet from the	East/West line	County
P	35	24S	28E		320	SOUTH	1266	EAST	EDDY

¹¹ Bottom Hole Location If Different From Surface

UL or lot no.	Section	Township	Range	Lot Idn	Feet from the	North/South line	Feet from the	East/West line	County
A	35	24S	28E		100	NORTH	330	EAST	EDDY

¹² Dedicated Acres 320.0	¹³ Joint or Infill	¹⁴ Consolidation Code	¹⁵ Order No.
--	-------------------------------	----------------------------------	-------------------------

No allowable will be assigned to this completion until all interests have been consolidated or a non-standard unit has been approved by the division.

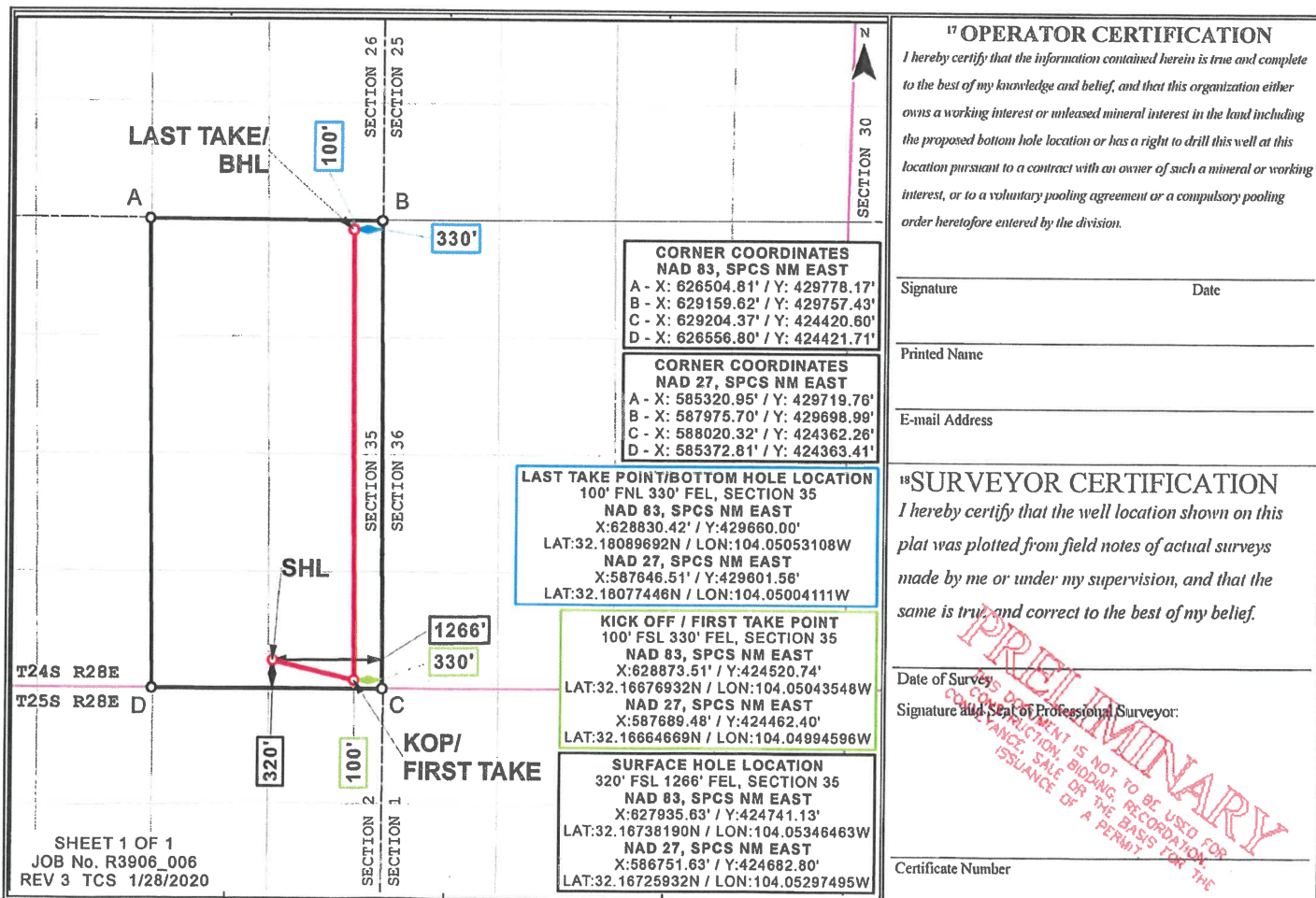


Exhibit "A"

Applicant: Marathon Oil Permian LLC
Operator: Marathon Oil Permian LLC (OGRID 372098)

Spacing Unit: Horizontal Gas
Building Blocks: Half Section Equivalent
Spacing Unit Size: 320 acres (more or less)
Orientation of Unit: North/South

Spacing Unit Description:

E/2 of Section 35,
Township 24 South, Range 28 East, NMPM, Eddy County, New Mexico

Pooling this Vertical Extent: Wolfcamp Formation
Depth Severance? (Yes/No): No

Pool: Purple Sage; Wolfcamp Gas (Pool code 98220)
Pool Spacing Unit Size: Half Sections
Governing Well Setbacks: Special Rules for the Purple Sage Gas Pool Apply
Pool Rules: Purple Sage and Horizontal Well Rules

Proximity Tracts: No

Monthly charge for supervision: While drilling: \$7000 While producing: \$700
As the charge for risk, 200 percent of reasonable well costs.

Proposed Wells:

Ripley 35 WXY Fed Com 3H, API No. 30-015-Pending

SHL: 520 feet from the South line and 1,296 feet from the East line,
(Unit P) of Section 35, Township 24 South, Range 28 East, NMPM.
BHL: 100 feet from the North line and 660 feet from the East line,
(Unit A) of Section 35, Township 24 South, Range 28 East, NMPM.

Completion Target: Wolfcamp Y Sand at approx 9,681 feet TVD.

Well Orientation: South to North

Completion Location expected to be: non-standard. Marathon will administratively apply
for non-standard location approval.

Ripley 35 WA Fed Com 4H, API No. 30-015-Pending

SHL: 520 feet from the South line and 1,326 feet from the East line,
(Unit O) of Section 35, Township 24 South, Range 28 East, NMPM.
BHL: 100 feet from the North line and 1,485 feet from the East line,
(Unit B) of Section 35, Township 24 South, Range 28 East, NMPM.

Completion Target: Wolfcamp A at approx 9,792 feet TVD.

Well Orientation: South to North

Completion Location expected to be: non-standard. Marathon will administratively apply for non-standard location approval.

Ripley 35 WXY Fed Com 5H, API No. 30-015-Pending

SHL: 520 feet from the South line and 1,356 feet from the East line, (Unit O) of Section 35, Township 24 South, Range 28 East, NMPM.

BHL: 100 feet from the North line and 2,310 feet from the East line, (Unit B) of Section 35, Township 24 South, Range 28 East, NMPM.

Completion Target: Wolfcamp Y Sand at approx 9,681 feet TVD.

Well Orientation: South to North

Completion Location expected to be: non-standard. Marathon will administratively apply for non-standard location approval.

Ripley 35 WA Fed Com 9H, API No. 30-015-Pending

SHL: 520 feet from the South line and 1,266 feet from the East line, (Unit P) of Section 35, Township 24 South, Range 28 East, NMPM.

BHL: 100 feet from the North line and 330 feet from the East line, (Unit A) of Section 35, Township 24 South, Range 28 East, NMPM.

Completion Target: Wolfcamp A at approx 9,792 feet TVD.

Well Orientation: South to North

Completion Location expected to be: non-standard. Marathon will administratively apply for non-standard location approval.

Ripley 35 WD Fed Com 2H, API No. 30-015-Pending

SHL: 320 feet from the South line and 1,326 feet from the East line, (Unit O) of Section 35, Township 24 South, Range 28 East, NMPM.

BHL: 100 feet from the North line and 2,310 feet from the East line, (Unit B) of Section 35, Township 24 South, Range 28 East, NMPM.

Completion Target: Wolfcamp D at approx 10,378 feet TVD.

Well Orientation: South to North

Completion Location expected to be: non-standard. Marathon will administratively apply for non-standard location approval.

Ripley 35 WD Fed Com 7H, API No. 30-015-Pending

SHL: 320 feet from the South line and 1,296 feet from the East line, (Unit P) of Section 35, Township 24 South, Range 28 East, NMPM.

BHL: 100 feet from the North line and 1,320 feet from the East line, (Unit B) of Section 35, Township 24 South, Range 28 East, NMPM.

Completion Target: Wolfcamp D at approx 10,717 feet TVD.

Well Orientation: South to North

Completion Location expected to be: non-standard. Marathon will administratively apply for non-standard location approval.

Ripley 35 WD Fed Com 8H, API No. 30-015-Pending

SHL: 320 feet from the South line and 1,266 feet from the East line,
(Unit P) of Section 35, Township 24 South, Range 28 East, NMPM.

BHL: 100 feet from the North line and 330 feet from the East line,
(Unit A) of Section 35, Township 24 South, Range 28 East, NMPM.

Completion Target: Wolfcamp D at approx 10,378 feet TVD.

Well Orientation: South to North

Completion Location expected to be: non-standard. Marathon will administratively apply for non-standard location approval.