

**STATE OF NEW MEXICO
DEPARTMENT OF ENERGY, MINERALS AND NATURAL RESOURCES
OIL CONSERVATION DIVISION**

APPLICATION OF DEVON ENERGY PRODUCTION
COMPANY, LP, FOR A STANDARD HORIZONTAL
SPACING AND PRORATION UNIT AND COMPULSORY
POOLING, EDDY COUNTY, NEW MEXICO

Case No. 20508

APPLICATION OF DEVON ENERGY PRODUCTION
COMPANY, LP, FOR A STANDARD HORIZONTAL
SPACING AND PRORATION UNIT AND COMPULSORY
POOLING, EDDY COUNTY, NEW MEXICO

Case No. 20509

APPLICATION OF DEVON ENERGY PRODUCTION
COMPANY, LP, FOR A STANDARD HORIZONTAL
SPACING AND PRORATION UNIT AND COMPULSORY
POOLING, EDDY COUNTY, NEW MEXICO

Case No. 20510

APPLICATION OF DEVON ENERGY PRODUCTION
COMPANY, LP, FOR A STANDARD HORIZONTAL
SPACING AND PRORATION UNIT AND COMPULSORY
POOLING, EDDY COUNTY, NEW MEXICO

Case No. 20511

APPLICATION OF DEVON ENERGY PRODUCTION
COMPANY, LP, FOR A STANDARD HORIZONTAL
SPACING AND PRORATION UNIT AND COMPULSORY
POOLING, EDDY COUNTY, NEW MEXICO

Case No. 20512

APPLICATION OF DEVON ENERGY PRODUCTION
COMPANY, LP, FOR A STANDARD HORIZONTAL
SPACING AND PRORATION UNIT AND COMPULSORY
POOLING, EDDY COUNTY, NEW MEXICO

Case No. 20514

SUPPLEMENTAL AFFIDAVIT OF VERL BROWN

I, being duly sworn on oath, state the following:

1. I am over the age of 18, and have the capacity to execute this Affidavit, which is based on my personal knowledge.

2. I am employed as a landman with Devon Energy Production Company, LP (“Devon”), and I am familiar with the subject applications and the lands involved.

3. This supplemental affidavit is submitted in connection with the filing by Devon of the above-referenced compulsory pooling applications pursuant to 19.15.4.12(A)(1) NMAC, to address (1) changes in the well locations, resulting from a new archeological site identified by the Bureau of Land Management, (2) the irregular lengths of the sections being developed, (3) the impact of those irregularities on footages pertinent to standard setbacks, and (4) requested operating charges and costs of supervision.

4. None of the changes Devon is making constitute a material change as described in the Division's June 11, 2020 notice titled "Material Changes or Deficiencies in Applications Submitted to the OCD Engineering Bureau." The proposed spacing units remain the same, as do the proportional interests in the acreage to be developed.

5. Attached to this supplemental affidavit are revised checklists for all of the above-referenced cases and revised C-102s, labeled as Revised Exhibit A-1, for all of the related wells.

6. In **Case Nos. 20508 and 20509**, Devon seeks orders pooling all uncommitted interests in the Bone Spring formation (Forty Niner Ridge; BONE SPRING WEST [96526]) as follows.

a. In **Case No. 20508**, the proposed horizontal spacing unit ("HSU") underlies the W/2 W/2 of Section 1 and the W/2 NW/4 of Section 12, all in Township 24 South, Range 29 East, Eddy County, New Mexico, creating a standard 240-acre, more or less, HSU. This proposed HSU will be dedicated to the **Fully Loaded 12-1 FED COM 331H** well ("12-1 331H"). The proposed surface hole location is approximately 1656' FNL and 1214' FWL of Section 12-T24S-R29E. The proposed bottom hole location is approximately 20' FNL and 990' FWL of Section 1-T24S-R29E. The proposed true vertical depth is approximately 10,273'. Measured depth is estimated to be ~17,500'. The

first take point will be located at approximately 2555' FNL and 990' FWL of Section 12-T24S-R29E, and the last take point will be located at approximately 100' FNL and 990' FWL of Section 1-T24S-R29E. The completed interval and first and last take points meet the setback requirements set forth in the statewide rules for horizontal oil wells. The length of the W/2 of the SW/4 of Section 12 is irregular, being a total of 2657.81 feet. The first take point is located 2555' FNL of Section 12. Thus, the first take point complies with the standard 100-foot setback. *See* the revised C-102 in the Revised Exhibit A-1.

b. In **Case No. 20509**, the HSU underlies the E/2 W/2 of Section 1 and the E/2 NW/4 of Section 12, all in Township 24 South, Range 29 East, Eddy County, New Mexico, creating a standard 240-acre, more or less, HSU. This proposed HSU will be dedicated to the **Fully Loaded 12-1 FED COM 332H** well ("12-1 332H"). The proposed surface hole location is approximately 1656' FNL and 1274' FWL of Section 12-T24S-R29E. The proposed bottom hole location is approximately 20' FNL and 2310' FWL of Section 1-T24S-R29E. The proposed true vertical depth is approximately 10,304'. Measured depth is estimated to be ~17,500'. The first take point will be located at approximately 2552' FNL and 2310' FWL of Section 12-T24S-R29E, and the last take point will be located at approximately 100' FNL and 2310' FWL of Section 1-T24S-R29E. The completed interval and first and last take points meet the setback requirements set forth in the statewide rules for horizontal oil wells. The length of the E/2 of the SW/4 of Section 12 is irregular, being a total of 2657.81 feet. The first take point is located 2552' FNL of Section 12. Thus, the first take point complies with the standard 100-foot setback. *See* the revised C-102 in the Revised Exhibit A-1, attached hereto.

7. In **Case No. 20510**, Devon seeks an order pooling all uncommitted interests in the Wolfcamp formation (Purple Sage; WOLFCAMP GAS [98220]). The HSU underlies the W/2 of Section 1 and the NW/4 of Section 12, all in Township 24 South, Range 29 East, Eddy County, New Mexico, creating a standard 480-acre, more or less, HSU. This proposed HSU will be dedicated to the **Fully Loaded 12-1 FED COM 621H** well (“12-1 621H”). The proposed surface hole location is approximately 1656’ FNL and 1184’ FWL of Section 12-T24S-R29E. The proposed bottom hole location is approximately 20’ FNL and 330’ FWL of Section 1-T24S-R29E. The proposed true vertical depth is approximately 10,398’. Measured depth is estimated to be ~17,500’. The first take point will be located at approximately 2557’ FNL and 330’ FWL of Section 12-T24S-R29E, and the last take point will be located at approximately 100’ FNL and 330’ FWL of Section 1-T24S-R29E. Also to be drilled is the following infill well: the **Fully Loaded 12-1 FED COM 622H** well (“12-1 622H”). The proposed surface hole location is approximately 1656’ FNL and 1244’ FWL of Section 12-T24S-R29E. The proposed bottom hole location is approximately 20’ FNL and 1650’ FWL of Section 1-T24S-R29E. The proposed true vertical depth is approximately 10,429’. Measured depth is estimated to be ~17,500’. The first take point will be located at approximately 2254’ FNL and 16500’ FWL of Section 12-T24S-R29E, and the last take point will be located at approximately 100’ FNL and 1650’ FWL of Section 1-T24S-R29E. Special pool rules for the Purple Sage Wolfcamp Gas Pool apply to these wells with respect to the surface hole location (“SHL”), the bottom hole location (“BHL”), and the completed interval. Statewide rules apply to the first take point (“FTP”) and the last take point (“LTP”). The completed interval and first and last take points for these wells are not within the required setbacks for horizontal gas wells. Devon obtained administrative approval of non-standard locations for the 12-1 FED COM 621H well by Administrative Order NSL-7919 (Aug.

23, 2019) and for the 12-1 FED COM 622H well by Administrative Order NSL-7920 (Aug. 23, 2019).

8. In **Case Nos. 20511 and 20512**, Devon seeks orders pooling all uncommitted interests in the Bone Spring formation (Forty Niner Ridge; BONE SPRING WEST [96526]) as follows.

a. In **Case No. 20511**, the proposed HSU underlies the W/2 of the W/2 of Section 13 and the W/2 of the SW/4 of Section 12, Township 24 South, Range 29 East, Eddy County, New Mexico, creating a standard 240-acre, more or less, HSU. This proposed HSU will be dedicated to the **Fully Loaded 12-13 FED COM 331H** well (“12-13 331H”). The proposed surface hole location is approximately 2258’ FNL and 1235’ FWL of Section 12-T24S-R29E. The proposed bottom hole location is approximately 20’ FSL and 990’ FWL of Section 13-T24S-R29E. The proposed true vertical depth is approximately 10,273’. Measured depth is estimated to be ~17,500’. The first take point will be located at approximately 2553’ FSL and 990’ FWL of Section 12-T24S-R29E, and the last take point will be located at approximately 100’ FSL and 990’ FWL of Section 13-T24S-R29E. The completed interval and first and last take points meet the setback requirements set forth in the statewide rules for horizontal oil wells. The length of the W/2 of the SW/4 of Section 12 is irregular, being a total of 2653.92 feet. The first take point is located 2553’ FSL of Section 12. Thus, the first take point complies with the standard 100-foot setback. *See* the revised C-102 in the Revised Exhibit A-1.

b. In **Case No. 20512**, the HSU underlies the E/2 of the W/2 of Section 13 and the E/2 of the SW/4 of Section 12, all in Township 24 South, Range 29 East, Eddy County, New Mexico, creating a standard 240-acre, more or less, HSU. This proposed HSU will

be dedicated to the **Fully Loaded 12-13 FED COM 332H** well ("12-13 332H"). The proposed surface hole location is approximately 2257' FNL and 1295' FWL of Section 12-T24S-R29E. The proposed bottom hole location is approximately 20' FSL and 2310' FWL of Section 13-T24S-R29E. The proposed true vertical depth is approximately 10,304'. Measured depth is estimated to be ~17,500'. The first take point will be located at approximately 2552' FSL and 2310' FWL of Section 12-T24S-R29E, and the last take point will be located at approximately 100' FSL and 2310' FWL of Section 13-T24S-R29E. The completed interval and first and last take points meet the setback requirements set forth in the statewide rules for horizontal oil wells. The length of the W/2 of the SW/4 of Section 12 is irregular, being a total of 2653.92 feet. The first take point is located 2552' FSL of Section 12. Thus, the first take point complies with the standard 100-foot setback. *See* the revised C-102 in the Revised Exhibit A-1.

9. In **Case No. 20514**, Devon seeks an order pooling all uncommitted interests in the Wolfcamp formation (Purple Sage; WOLFCAMP GAS [98220]). The HSU underlies the W/2 of Section 13 and the SW/4 of Section 12, all in Township 24 South, Range 29 East, Eddy County, New Mexico, creating a standard 480-acre, more or less, HSU. This proposed HSU will be dedicated to the **Fully Loaded 12-13 FED COM 622H** well ("12-13 622H"). The proposed surface hole location is approximately 2258' FNL and 1265' FWL of Section 12-T24S-R29E. The proposed bottom hole location is approximately 20' FSL and 1650' FWL of Section 13-T24S-R29E. The proposed true vertical depth is approximately 10,429'. Measured depth is estimated to be ~17,500'. The first take point will be located at approximately 2553' FSL and 1650' FWL of Section 12-T24S-R29E, and the last take point will be located at approximately 100' FSL and 1650' FWL of Section 13-T24S-R29E. Also to be drilled is the following infill well: the **Fully**

Loaded 12-13 FED COM 621H well (“12-13 621H”). The proposed surface hole location is approximately 2258’ FNL and 1205’ FWL of Section 12-T24S-R29E. The proposed bottom hole location is approximately 20’ FSL and 330’ FWL of Section 13-T24S-R29E. The proposed true vertical depth is approximately 10,398’. Measured depth is estimated to be ~17,500’. The first take point will be located at approximately 2554’ FSL and 330’ FWL of Section 12-T24S-R29E, and the last take point will be located at approximately 100’ FSL and 330’ FWL of Section 13-T24S-R29E. Special pool rules for the Purple Sage Wolfcamp Gas Pool apply to these wells with respect to the surface hole location (“SHL”), the bottom hole location (“BHL”), and the completed interval. Statewide rules apply to the first take point (“FTP”) and the last take point (“LTP”). The completed interval and first and last take points for these wells are not within the required setbacks for horizontal gas wells. Devon obtained administrative approval of non-standard locations for the 12-13 FED COM 621H well by Administrative Order NSL-7921 (Aug. 23, 2019) and for the 12-13 FED COM 622H well by Administrative Order NSL-7922 (Aug. 23, 2019).

10. As explained in my previous affidavit in the above-referenced cases, Devon had obtained administrative approvals for non-standard locations for the Wolfcamp wells 12-1 621H, the 12-1 622H, the 12-13 621H, and the 12-13 622H in Administrative Orders NSL-7919, NSL-7920, NSL-7921, NSL-7911, respectively. Devon will be seeking amendment of the foregoing orders in light of the changes in the well locations.

11. Devon requests the Division to approve operating charges and costs of supervision while drilling of \$8,000/month and, after completion, \$800/month, together with a provision adjusting the rates pursuant to the COPAS accounting procedures.

12. The Exhibits to this Affidavit were prepared by me, or compiled from Devon’s business records.

13. The granting of these Applications is in the interests of conservation, the prevention of waste, and the protection of correlative rights.

14. The foregoing is correct and complete to the best of my knowledge and belief.

FURTHER AFFIANT SAYETH NAUGHT

Verl Brown

Verl Brown

STATE OF OKLAHOMA)
)ss
COUNTY OF OKLAHOMA)

Subscribed to and sworn before me this 9th day of July, 2020.

Clint Dake

Notary Public

My Commission expires 5/7/23.



COMPULSORY POOLING APPLICATION CHECKLIST (pdf) - REVISED	
ALL INFORMATION IN THE APPLICATION MUST BE SUPPORTED BY SIGNED AFFIDAVITS	
Case: 20508	APPLICANT'S RESPONSE
Hearing Date	May 28, 2020
Applicant	Devon Energy Production Company, L.P.
Designated Operator & OGRID (affiliation if applicable)	6137
Applicant's Counsel:	Montgomery & Andrews, P.A., Sharon Shaheen and John McIntyre
Case Title:	APPLICATION OF DEVON ENERGY PRODUCTION COMPANY LP FOR A STANDARD HORIZONTAL SPACING AND PRORATION UNIT AND COMPULSORY POOLING, EDDY COUNTY, NEW MEXICO
Entries of Appearance/Intervenors:	Holland & Hart, EOG M Resources, Inc. & EOG Y Resources, Inc.
Well Family	Fully Loaded
Formation/Pool	
Formation Name(s) or Vertical Extent:	Bone Spring
Primary Product (Oil or Gas):	Oil
Pooling this vertical extent:	Bone Spring Formation
Pool Name and Pool Code:	Forty Niner Ridge; Bone Spring West (96526)
Well Location Setback Rules:	Standard
Spacing Unit Size:	240 acres, more or less
Spacing Unit	
Type (Horizontal/Vertical)	Horizontal
Size (Acres)	240 acres, more or less
Building Blocks:	40 acres
Orientation:	South to North
Description: TRS/County	W/2 W/2 of Section 1 and W/2 NW/4 of Section 12, all in T24S, R29E, Eddy County
Standard Horizontal Well Spacing Unit (Y/N), If No, describe	Yes
Other Situations	
Depth Severance: Y/N. If yes, description	No
Proximity Tracts: If yes, description	No
Proximity Defining Well: if yes, description	No

Applicant's Ownership in Each Tract	Tract 1 (63% pre-trade & post-trade), Tract 2 (32% pre-trade & 100% post-trade); see Exhibit A at 7, para. 13; Exhibit A-2
Well(s)	
Name & API (if assigned), surface and bottom hole location, footages, completion target, orientation, completion status (standard or non-standard)	Fully Loaded 12-1 Fed Com 331H, API# 30-015-PENDING, SHL (1656' FNL, 1214' FWL 12-24S-29E), BHL (20' FNL, 990' FWL 1-24S-29E), 3rd BS, South-->North, completion expected to be standard
Horizontal Well First and Last Take Points	FTP (2555' FNL, 990' FWL 12-24S-29E), LTP (100' FNL, 990' FWL 1-24S-29E)
Completion Target (Formation, TVD and MD)	3rd BS, TVD (10,273'), MD (estimated to be ~17,500')
AFE Capex and Operating Costs	
Drilling Supervision/Month \$	\$8,000/mo.; see Supplemental Affidavit of Verl Brown
Production Supervision/Month \$	\$800/mo.; see Supplemental Affidavit of Verl Brown
Justification for Supervision Costs	Exhibit A-3 at AFEs
Requested Risk Charge	200%, see Exhibit A at 8, para. 20
Notice of Hearing	
Proposed Notice of Hearing	See last page of each application at Tab 2
Proof of Mailed Notice of Hearing (20 days before hearing)	Exhibit A-5; Exhibit C and Exhibit A attached thereto
Proof of Published Notice of Hearing (10 days before hearing)	Exhibit C and Exhibit B attached thereto
Ownership Determination	
Land Ownership Schematic of the Spacing Unit	Exhibit A-2
Tract List (including lease numbers and owners)	Exhibit A-2
Pooled Parties (including ownership type)	See Exhibit A-2; see also exhibit attached to each sample notice letter in Exhibit A-5
Unlocatable Parties to be Pooled	None
Ownership Depth Severance (including percentage above & below)	None
Joinder	
Sample Copy of Proposal Letter	Exhibit A-3
List of Interest Owners (ie Exhibit A of JOA)	Exhibit A-2
Chronology of Contact with Non-Joined Working Interests	Exhibit A-4
Overhead Rates In Proposal Letter	See Exhibit A-3 at AFEs
Cost Estimate to Drill and Complete	See Exhibit A-3 at AFEs
Cost Estimate to Equip Well	See Exhibit A-3 at AFEs

Cost Estimate for Production Facilities	See Exhibit A-3 at AFEs
Geology	
Summary (including special considerations)	Exhibit B at 2-4, paras. 7-12, and related exhibits
Spacing Unit Schematic	Exhibit A-2
Gunbarrel/Lateral Trajectory Schematic	Exhibit B-9
Well Orientation (with rationale)	Exhibit B at 5, para. 14(d)
Target Formation	Exhibit B-10
HSU Cross Section	Exhibits B-7 & B-8
Depth Severance Discussion	N/A
Forms, Figures and Tables	
C-102	Exhibit A-1
Tracts	Exhibit A-2
Summary of Interests, Unit Recapitulation (Tracts)	Exhibit A-2
General Location Map (including basin)	Exhibit B-1
Well Bore Location Map	Exhibit B-2
Structure Contour Map - Subsea Depth	Exhibit B-3
Cross Section Location Map (including wells)	Exhibit B-5
Cross Section (including Landing Zone)	Exhibits B-7 & B-8
Additional Information	None
CERTIFICATION: I hereby certify that the information provided in this checklist is complete and accurate.	
Printed Name (Attorney or Party Representative):	Sharon Shaheen
Signed Name (Attorney or Party Representative):	<i>Sharon A Shaheen</i>
Date:	10-Jul-20

Case: 20509	APPLICANT'S RESPONSE
Hearing Date	May 28, 2020
Applicant	Devon Energy Production Company, L.P.
Designated Operator & OGRID (affiliation if applicable)	6137
Applicant's Counsel:	Montgomery & Andrews, P.A., Sharon Shaheen and John McIntyre
Case Title:	APPLICATION OF DEVON ENERGY PRODUCTION COMPANY LP FOR A STANDARD HORIZONTAL SPACING AND PRORATION UNIT AND COMPULSORY POOLING, EDDY COUNTY, NEW MEXICO
Entries of Appearance/Intervenors:	Holland & Hart, EOG M Resources, Inc. & EOG Y Resources, Inc.
Well Family	Fully Loaded
Formation/Pool	
Formation Name(s) or Vertical Extent:	Bone Spring
Primary Product (Oil or Gas):	Oil
Pooling this vertical extent:	Bone Spring Formation
Pool Name and Pool Code:	Forty Niner Ridge; Bone Spring West (96526)
Well Location Setback Rules:	Standard
Spacing Unit Size:	240 acres, more or less
Spacing Unit	
Type (Horizontal/Vertical)	Horizontal
Size (Acres)	240 acres, more or less
Building Blocks:	40 acres
Orientation:	South to North
Description: TRS/County	E/2 W/2 of Section 1 and E/2 NW/4 of Section 12, all in T24S, R29E, Eddy County
Standard Horizontal Well Spacing Unit (Y/N), If No, describe	Yes
Other Situations	
Depth Severance: Y/N. If yes, description	No
Proximity Tracts: If yes, description	No
Proximity Defining Well: if yes, description	No
Applicant's Ownership in Each Tract	Tract 1 (63% pre-trade & post-trade), Tract 2 (32% pre-trade & 100% post-trade); see Exhibit A at 7, para. 13; Exhibit A-2
Well(s)	
Name & API (if assigned), surface and bottom hole location, footages, completion target, orientation, completion status (standard or non-standard)	Fully Loaded 12-1 Fed Com 332H, API# 30-015-PENDING, SHL (1656' FNL, 1274' FWL 12-24S-29E), BHL (20' FNL, 2310' FWL 1-24S-29E), 3rd BS, South->North, completion expected to be standard
Horizontal Well First and Last Take Points	FTP (2552' FNL, 2310' FWL 12-24S-29E), LTP (100' FNL, 2310' FWL 1-24S-29E)
Completion Target (Formation, TVD and MD)	3rd BS, TVD (10,304'), MD (estimated to be ~17,500')

AFE Capex and Operating Costs	
Drilling Supervision/Month \$	\$8,000/mo.; <i>see</i> Supplemental Affidavit of Verl Brown
Production Supervision/Month \$	\$800/mo.; <i>see</i> Supplemental Affidavit of Verl Brown
Justification for Supervision Costs	Exhibit A-3 at AFEs
Requested Risk Charge	200%, <i>see</i> Exhibit A at 8, para. 20
Notice of Hearing	
Proposed Notice of Hearing	See last page of each application at Tab 2
Proof of Mailed Notice of Hearing (20 days before hearing)	Exhibit A-5; Exhibit C and Exhibit A attached thereto
Proof of Published Notice of Hearing (10 days before hearing)	Exhibit C and Exhibit B attached thereto
Ownership Determination	
Land Ownership Schematic of the Spacing Unit	Exhibit A-2
Tract List (including lease numbers and owners)	Exhibit A-2
Pooled Parties (including ownership type)	<i>See</i> Exhibit A-2; <i>see also</i> exhibit attached to each sample notice letter in Exhibit A-5
Unlocatable Parties to be Pooled	None
Ownership Depth Severance (including percentage above & below)	None
Joinder	
Sample Copy of Proposal Letter	Exhibit A-3
List of Interest Owners (ie Exhibit A of JOA)	Exhibit A-2
Chronology of Contact with Non-Joined Working Interests	Exhibit A-4
Overhead Rates In Proposal Letter	<i>See</i> Exhibit A-3 at AFEs
Cost Estimate to Drill and Complete	<i>See</i> Exhibit A-3 at AFEs
Cost Estimate to Equip Well	<i>See</i> Exhibit A-3 at AFEs
Cost Estimate for Production Facilities	<i>See</i> Exhibit A-3 at AFEs
Geology	
Summary (including special considerations)	Exhibit B at 2-4, paras. 7-12, and related exhibits
Spacing Unit Schematic	Exhibit A-2
Gunbarrel/Lateral Trajectory Schematic	Exhibit B-9
Well Orientation (with rationale)	Exhibit B at 5, para. 14(d)
Target Formation	Exhibit B-10
HSU Cross Section	Exhibits B-7 & B-8
Depth Severance Discussion	N/A
Forms, Figures and Tables	
C-102	Exhibit A-1
Tracts	Exhibit A-2
Summary of Interests, Unit Recapitulation (Tracts)	Exhibit A-2
General Location Map (including basin)	Exhibit B-1
Well Bore Location Map	Exhibit B-2
Structure Contour Map - Subsea Depth	Exhibit B-3
Cross Section Location Map (including wells)	Exhibit B-5
Cross Section (including Landing Zone)	Exhibits B-7 & B-8
Additional Information	None

CERTIFICATION: I hereby certify that the information provided in this checklist is complete and accurate.	
Printed Name (Attorney or Party Representative):	Sharon Shaheen
Signed Name (Attorney or Party Representative):	<i>Sharon A Shaheen</i>
Date:	10-Jul-20

COMPULSORY POOLING APPLICATION CHECKLIST (pdf) - REVISED	
ALL INFORMATION IN THE APPLICATION MUST BE SUPPORTED BY SIGNED AFFIDAVITS	
Case: 20510	APPLICANT'S RESPONSE
Hearing Date	May 28, 2020
Applicant	Devon Energy Production Company, L.P.
Designated Operator & OGRID (affiliation if applicable)	6137
Applicant's Counsel:	Montgomery & Andrews, P.A., Sharon Shaheen and John McIntyre
Case Title:	APPLICATION OF DEVON ENERGY PRODUCTION COMPANY LP FOR A STANDARD HORIZONTAL SPACING AND PRORATION UNIT AND COMPULSORY POOLING, EDDY COUNTY, NEW MEXICO
Entries of Appearance/Intervenors:	Holland & Hart, EOG M Resources, Inc. & EOG Y Resources, Inc.
Well Family	Fully Loaded
Formation/Pool	
Formation Name(s) or Vertical Extent:	Wolfcamp
Primary Product (Oil or Gas):	Gas
Pooling this vertical extent:	Wolfcamp Formation
Pool Name and Pool Code:	Purple Sage; WOLFCAMP GAS [98220]
Well Location Setback Rules:	Purple Sage special rules (SHL, BHL, & completed interval); Statewide rules (FTP & LTP)
Spacing Unit Size:	480 acres, more or less
Spacing Unit	
Type (Horizontal/Vertical)	Horizontal
Size (Acres)	480 acres, more or less
Building Blocks:	160 acres
Orientation:	South to North
Description: TRS/County	W/2 of Section 1 and NW/4 of Section 12, all in T24S, R29E, Eddy County
Standard Horizontal Well Spacing Unit (Y/N), If No, describe	Yes
Other Situations	
Depth Severance: Y/N. If yes, description	No
Proximity Tracts: If yes, description	No

Proximity Defining Well: if yes, description	No
Applicant's Ownership in Each Tract	Tract 1 (63% pre-trade & post-trade), Tract 2 (32% pre-trade & 100% post-trade); <i>see</i> Exhibit A at 7, para. 13; Exhibit A-2
Well(s)	
Name & API (if assigned), surface and bottom hole location, footages, completion target, orientation, completion status (standard or non-standard)	<u>Well No. 1:</u> Fully Loaded 12-1 Fed Com 621H, API# 30-015-PENDING, SHL (1656' FNL, 1184' FWL 12-24S-29E), BHL (20' FNL, 330' FWL 1-24S-29E), Wolfcamp XY, South-->North, completion expected to be non-standard approved by AO NSL-7919 (8/23/19)
	<u>Well No. 2:</u> Fully Loaded 12-1 Fed Com 622H, API# 30-015-PENDING, SHL (1656' FNL, 1244' FWL 12-24S-29E), BHL (20' FNL, 1650' FWL 1-24S-29E), Wolfcamp XY, South-->North, completion expected to be non-standard as approved by AO NSL-7920 (8/23/19)
Horizontal Well First and Last Take Points	<u>Well No. 1:</u> FTP (2557' FNL, 330' FWL 12-24S-29E), LTP (100' FNL, 330' FWL 1-24S-29E)
	<u>Well No. 2:</u> FTP (2554' FNL, 1650' FWL 12-24S-29E), LTP (100' FNL, 1650' FWL 1-24S-29E)
Completion Target (Formation, TVD and MD)	<u>Well No. 1:</u> WC XY, TVD (10,398'), MD (estimated to be ~17,500')
	<u>Well No. 2:</u> WC XY, TVD (10,429'), MD (estimated to be ~17,500')
AFE Capex and Operating Costs	
Drilling Supervision/Month \$	\$8,000/mo.; <i>see</i> Supplemental Affidavit of Verl Brown
Production Supervision/Month \$	\$800/mo.; <i>see</i> Supplemental Affidavit of Verl Brown
Justification for Supervision Costs	Exhibit A-3 at AFEs
Requested Risk Charge	200%, <i>see</i> Exhibit A at 8, para. 20
Notice of Hearing	
Proposed Notice of Hearing	See last page of each application at Tab 2
Proof of Mailed Notice of Hearing (20 days before hearing)	Exhibit A-5; Exhibit C and Exhibit A attached thereto
Proof of Published Notice of Hearing (10 days before hearing)	Exhibit C and Exhibit B attached thereto
Ownership Determination	
Land Ownership Schematic of the Spacing Unit	Exhibit A-2
Tract List (including lease numbers and owners)	Exhibit A-2

Pooled Parties (including ownership type)	See Exhibit A-2; see also exhibit attached to each sample notice letter in Exhibit A-5
Unlocatable Parties to be Pooled	None
Ownership Depth Severance (including percentage above & below)	None
Joinder	
Sample Copy of Proposal Letter	Exhibit A-3
List of Interest Owners (ie Exhibit A of JOA)	Exhibit A-2
Chronology of Contact with Non-Joined Working Interests	Exhibit A-4
Overhead Rates In Proposal Letter	See Exhibit A-3 at AFEs
Cost Estimate to Drill and Complete	See Exhibit A-3 at AFEs
Cost Estimate to Equip Well	See Exhibit A-3 at AFEs
Cost Estimate for Production Facilities	See Exhibit A-3 at AFEs
Geology	
Summary (including special considerations)	Exhibit B at 2-4, paras. 7-12, and related exhibits
Spacing Unit Schematic	Exhibit A-2
Gunbarrel/Lateral Trajectory Schematic	Exhibit B-9
Well Orientation (with rationale)	Exhibit B at 5, para. 14(d)
Target Formation	Exhibit B-10
HSU Cross Section	Exhibits B-7 & B-8
Depth Severance Discussion	N/A
Forms, Figures and Tables	
C-102	Exhibit A-1
Tracts	Exhibit A-2
Summary of Interests, Unit Recapitulation (Tracts)	Exhibit A-2
General Location Map (including basin)	Exhibit B-1
Well Bore Location Map	Exhibit B-2
Structure Contour Map - Subsea Depth	Exhibit B-4
Cross Section Location Map (including wells)	Exhibit B-6
Cross Section (including Landing Zone)	Exhibits B-7 & B-8
Additional Information	None
CERTIFICATION: I hereby certify that the information provided in this checklist is complete and accurate.	
Printed Name (Attorney or Party Representative):	Sharon Shaheen
Signed Name (Attorney or Party Representative):	<i>Sharon A Shaheen</i>
Date:	10-Jul-20

COMPULSORY POOLING APPLICATION CHECKLIST (pdf) - REVISED	
ALL INFORMATION IN THE APPLICATION MUST BE SUPPORTED BY SIGNED AFFIDAVITS	
Case: 20511	APPLICANT'S RESPONSE
Hearing Date	May 28, 2020
Applicant	Devon Energy Production Company, L.P.
Designated Operator & OGRID (affiliation if applicable)	6137
Applicant's Counsel:	Montgomery & Andrews, P.A., Sharon Shaheen and John McIntyre
Case Title:	APPLICATION OF DEVON ENERGY PRODUCTION COMPANY LP FOR A STANDARD HORIZONTAL SPACING AND PRORATION UNIT AND COMPULSORY POOLING, EDDY COUNTY, NEW MEXICO
Entries of Appearance/Intervenors:	Holland & Hart, EOG M Resources, Inc. & EOG Y Resources, Inc.
Well Family	Fully Loaded
Formation/Pool	
Formation Name(s) or Vertical Extent:	Bone Spring
Primary Product (Oil or Gas):	Oil
Pooling this vertical extent:	Bone Spring Formation
Pool Name and Pool Code:	Forty Niner Ridge; Bone Spring West (96526)
Well Location Setback Rules:	Standard
Spacing Unit Size:	240 acres, more or less
Spacing Unit	
Type (Horizontal/Vertical)	Horizontal
Size (Acres)	240 acres, more or less
Building Blocks:	40 acres
Orientation:	North to South
Description: TRS/County	W/2 W/2 of Section 13 and W/2 SW/4 of Section 12, all in T24S, R29E, Eddy County
Standard Horizontal Well Spacing Unit (Y/N), If No, describe	Yes
Other Situations	
Depth Severance: Y/N. If yes, description	No
Proximity Tracts: If yes, description	No
Proximity Defining Well: if yes, description	No
Applicant's Ownership in Each Tract	Tract 1 (32% pre-trade & 100% post-trade), Tract 2 (32% pre-trade & 100% post-trade); see Exhibit A at 7, para. 13; Exhibit A-2
Well(s)	
Name & API (if assigned), surface and bottom hole location, footages, completion target, orientation, completion status (standard or non-standard)	Fully Loaded 12-13 Fed Com 331H, API# 30-015-PENDING, SHL (2258' FNL, 1235' FWL 12-24S-29E), BHL (20' FSL, 990' FWL 13-24S-29E), 3rd BS, North-->South, completion expected to be standard
Horizontal Well First and Last Take Points	FTP (2553' FSL, 990' FWL 12-24S-29E), LTP (100' FSL, 990' FWL 13-24S-29E)
Completion Target (Formation, TVD and MD)	3rd BS, TVD (10,273'), MD (estimated to be ~17,500')

AFE Capex and Operating Costs	
Drilling Supervision/Month \$	\$8,000/mo.; <i>see</i> Supplemental Affidavit of Verl Brown
Production Supervision/Month \$	\$800/mo.; <i>see</i> Supplemental Affidavit of Verl Brown
Justification for Supervision Costs	Exhibit A-3 at AFEs
Requested Risk Charge	200%, <i>see</i> Exhibit A at 8, para. 20
Notice of Hearing	
Proposed Notice of Hearing	See last page of each application at Tab 2
Proof of Mailed Notice of Hearing (20 days before hearing)	Exhibit A-5; Exhibit C and Exhibit A attached thereto
Proof of Published Notice of Hearing (10 days before hearing)	Exhibit C and Exhibit B attached thereto
Ownership Determination	
Land Ownership Schematic of the Spacing Unit	Exhibit A-2
Tract List (including lease numbers and owners)	Exhibit A-2
Pooled Parties (including ownership type)	<i>See</i> Exhibit A-2; <i>see also</i> exhibit attached to each sample notice letter in Exhibit A-5
Unlocatable Parties to be Pooled	None
Ownership Depth Severance (including percentage above & below)	None
Joinder	
Sample Copy of Proposal Letter	Exhibit A-3
List of Interest Owners (ie Exhibit A of JOA)	Exhibit A-2
Chronology of Contact with Non-Joined Working Interests	Exhibit A-4
Overhead Rates In Proposal Letter	See Exhibit A-3 at AFEs
Cost Estimate to Drill and Complete	See Exhibit A-3 at AFEs
Cost Estimate to Equip Well	See Exhibit A-3 at AFEs
Cost Estimate for Production Facilities	See Exhibit A-3 at AFEs
Geology	
Summary (including special considerations)	Exhibit B at 2-4, paras. 7-12, and related exhibits
Spacing Unit Schematic	Exhibit A-2
Gunbarrel/Lateral Trajectory Schematic	Exhibit B-9
Well Orientation (with rationale)	Exhibit B at 5, para. 14(d)
Target Formation	Exhibit B-10
HSU Cross Section	Exhibits B-7 & B-8
Depth Severance Discussion	N/A
Forms, Figures and Tables	
C-102	Exhibit A-1
Tracts	Exhibit A-2
Summary of Interests, Unit Recapitulation (Tracts)	Exhibit A-2
General Location Map (including basin)	Exhibit B-1
Well Bore Location Map	Exhibit B-2
Structure Contour Map - Subsea Depth	Exhibit B-3
Cross Section Location Map (including wells)	Exhibit B-5
Cross Section (including Landing Zone)	Exhibits B-7 & B-8
Additional Information	None
CERTIFICATION: I hereby certify that the information provided in this checklist is complete and accurate.	
Printed Name (Attorney or Party Representative):	Sharon Shaheen

Signed Name (Attorney or Party Representative):	Sharon J. Shokeen
Date:	10-Jul-20

COMPULSORY POOLING APPLICATION CHECKLIST (pdf) - REVISED	
ALL INFORMATION IN THE APPLICATION MUST BE SUPPORTED BY SIGNED AFFIDAVITS	
Case: 20512	APPLICANT'S RESPONSE
Hearing Date	May 28, 2020
Applicant	Devon Energy Production Company, L.P.
Designated Operator & OGRID (affiliation if applicable)	6137
Applicant's Counsel:	Montgomery & Andrews, P.A., Sharon Shaheen and John McIntyre
Case Title:	APPLICATION OF DEVON ENERGY PRODUCTION COMPANY LP FOR A STANDARD HORIZONTAL SPACING AND PRORATION UNIT AND COMPULSORY POOLING, EDDY COUNTY, NEW MEXICO
Entries of Appearance/Intervenors:	Holland & Hart, EOG M Resources, Inc. & EOG Y Resources, Inc.
Well Family	Fully Loaded
Formation/Pool	
Formation Name(s) or Vertical Extent:	Bone Spring
Primary Product (Oil or Gas):	Oil
Pooling this vertical extent:	Bone Spring Formation
Pool Name and Pool Code:	Forty Niner Ridge; Bone Spring West (96526)
Well Location Setback Rules:	Standard
Spacing Unit Size:	240 acres, more or less
Spacing Unit	
Type (Horizontal/Vertical)	Horizontal
Size (Acres)	240 acres, more or less
Building Blocks:	40 acres
Orientation:	North to South
Description: TRS/County	E/2 W/2 of Section 13 and E/2 SW/4 of Section 12, all in T24S, R29E, Eddy County
Standard Horizontal Well Spacing Unit (Y/N), If No, describe	Yes
Other Situations	
Depth Severance: Y/N. If yes, description	No
Proximity Tracts: If yes, description	No
Proximity Defining Well: if yes, description	No
Applicant's Ownership in Each Tract	Tract 1 (32% pre-trade & 100% post-trade), Tract 2 (32% pre-trade & 100% post-trade); see Exhibit A at 7, para. 13; Exhibit A-2
Well(s)	
Name & API (if assigned), surface and bottom hole location, footages, completion target, orientation, completion status (standard or non-standard)	Fully Loaded 12-13 Fed Com 332H, API# 30-015-PENDING, SHL (2257' FNL, 1295' FWL 12-24S-29E), BHL (20' FSL, 2310' FWL 13-24S-29E), 3rd BS, North-->South, completion expected to be standard
Horizontal Well First and Last Take Points	FTP (2552' FSL, 2310' FWL 12-24S-29E), LTP (100' FSL, 2310' FWL 13-24S-29E)

Completion Target (Formation, TVD and MD)	3rd BS, TVD (10,304'), MD (estimated to be ~17,500')
AFE Capex and Operating Costs	
Drilling Supervision/Month \$	\$8,000/mo.; <i>see</i> Supplemental Affidavit of Verl Brown
Production Supervision/Month \$	\$800/mo.; <i>see</i> Supplemental Affidavit of Verl Brown
Justification for Supervision Costs	Exhibit A-3 at AFEs
Requested Risk Charge	200%, <i>see</i> Exhibit A at 8, para. 20
Notice of Hearing	
Proposed Notice of Hearing	See last page of each application at Tab 2
Proof of Mailed Notice of Hearing (20 days before hearing)	Exhibit A-5; Exhibit C and Exhibit A attached thereto
Proof of Published Notice of Hearing (10 days before hearing)	Exhibit C and Exhibit B attached thereto
Ownership Determination	
Land Ownership Schematic of the Spacing Unit	Exhibit A-2
Tract List (including lease numbers and owners)	Exhibit A-2
Pooled Parties (including ownership type)	<i>See</i> Exhibit A-2; <i>see also</i> exhibit attached to each sample notice letter in Exhibit A-5
Unlocatable Parties to be Pooled	None
Ownership Depth Severance (including percentage above & below)	None
Joinder	
Sample Copy of Proposal Letter	Exhibit A-3
List of Interest Owners (ie Exhibit A of JOA)	Exhibit A-2
Chronology of Contact with Non-Joined Working Interests	Exhibit A-4
Overhead Rates In Proposal Letter	<i>See</i> Exhibit A-3 at AFEs
Cost Estimate to Drill and Complete	<i>See</i> Exhibit A-3 at AFEs
Cost Estimate to Equip Well	<i>See</i> Exhibit A-3 at AFEs
Cost Estimate for Production Facilities	<i>See</i> Exhibit A-3 at AFEs
Geology	
Summary (including special considerations)	Exhibit B at 2-4, paras. 7-12, and related exhibits
Spacing Unit Schematic	Exhibit A-2
Gunbarrel/Lateral Trajectory Schematic	Exhibit B-9
Well Orientation (with rationale)	Exhibit B at 5, para. 14(d)
Target Formation	Exhibit B-10
HSU Cross Section	Exhibits B-7 & B-8
Depth Severance Discussion	N/A
Forms, Figures and Tables	
C-102	Exhibit A-1
Tracts	Exhibit A-2
Summary of Interests, Unit Recapitulation (Tracts)	Exhibit A-2
General Location Map (including basin)	Exhibit B-1
Well Bore Location Map	Exhibit B-2
Structure Contour Map - Subsea Depth	Exhibit B-3
Cross Section Location Map (including wells)	Exhibit B-5
Cross Section (including Landing Zone)	Exhibits B-7 & B-8

Additional Information	None
CERTIFICATION: I hereby certify that the information provided in this checklist is complete and accurate.	
Printed Name (Attorney or Party Representative):	Sharon Shaheen
Signed Name (Attorney or Party Representative):	<i>Sharon A Shaheen</i>
Date:	10-Jul-20

ALL INFORMATION IN THE APPLICATION MUST BE SUPPORTED BY SIGNED AFFIDAVITS	
Case: 20514	APPLICANT'S RESPONSE
Hearing Date	May 28, 2020
Applicant	Devon Energy Production Company, L.P.
Designated Operator & OGRID (affiliation if applicable)	6137
Applicant's Counsel:	Montgomery & Andrews, P.A., Sharon Shaheen and John McIntyre
Case Title:	APPLICATION OF DEVON ENERGY PRODUCTION COMPANY LP FOR A STANDARD HORIZONTAL SPACING AND PRORATION UNIT AND COMPULSORY POOLING, EDDY COUNTY, NEW MEXICO
Entries of Appearance/Intervenors:	Holland & Hart, EOG M Resources, Inc. & EOG Y Resources, Inc.
Well Family	Fully Loaded
Formation/Pool	
Formation Name(s) or Vertical Extent:	Wolfcamp
Primary Product (Oil or Gas):	Gas
Pooling this vertical extent:	Wolfcamp Formation
Pool Name and Pool Code:	Purple Sage; WOLFCAMP GAS [98220]
Well Location Setback Rules:	Purple Sage special rules (SHL, BHL, & completed interval); Statewide rules (FTP & LTP)
Spacing Unit Size:	480 acres, more or less
Spacing Unit	
Type (Horizontal/Vertical)	Horizontal
Size (Acres)	480 acres, more or less
Building Blocks:	160 acres
Orientation:	North to South
Description: TRS/County	W/2 of Section 13 and SW/4 of Section 12, all in T24S, R29E, Eddy County
Standard Horizontal Well Spacing Unit (Y/N), If No, describe	Yes
Other Situations	
Depth Severance: Y/N. If yes, description	No
Proximity Tracts: If yes, description	No
Proximity Defining Well: if yes, description	No

Applicant's Ownership in Each Tract	Tract 1 (32% pre-trade & 100% post-trade), Tract 2 (32% pre-trade & 100% post-trade); <i>see</i> Exhibit A at 7, para. 13; Exhibit A-2
Well(s)	
Name & API (if assigned), surface and bottom hole location, footages, completion target, orientation, completion status (standard or non-standard)	<u>Well No. 1:</u> Fully Loaded 12-13 Fed Com 622H, API# 30-015-PENDING, SHL (2258' FNL, 1265' FWL 12-24S-29E), BHL (20' FSL, 1650' FWL 13-24S-29E), Wolfcamp XY, North-->South, completion expected to be non-standard as approved by AO NSL-7922 (8/23/19)
	<u>Well No. 2:</u> Fully Loaded 12-13 Fed Com 621H, API# 30-015-PENDING, SHL (2258' FNL, 1205' FWL 12-24S-29E), BHL (20' FSL, 330' FWL 13-24S-29E), Wolfcamp XY, North-->South, completion expected to be non-standard as approved by AO NSL-7921 (8/23/19)
Horizontal Well First and Last Take Points	<u>Well No. 1:</u> FTP (2553' FSL, 1650' FWL 12-24S-29E), LTP (100' FSL, 1650' FWL 13-24S-29E)
	<u>Well No. 2:</u> FTP (2554' FSL, 330' FWL 12-24S-29E), LTP (100' FSL, 330' FWL 13-24S-29E)
Completion Target (Formation, TVD and MD)	<u>Well No. 1:</u> WC XY, TVD (10,429'), MD (estimated to be ~17,500')
	<u>Well No. 2:</u> WC XY, TVD (10,398'), MD (estimated to be ~17,500')
AFE Capex and Operating Costs	
Drilling Supervision/Month \$	\$8,000/mo.; <i>see</i> Supplemental Affidavit of Verl Brown
Production Supervision/Month \$	\$800/mo.; <i>see</i> Supplemental Affidavit of Verl Brown
Justification for Supervision Costs	Exhibit A-3 at AFEs
Requested Risk Charge	200%, <i>see</i> Exhibit A at 8, para. 20
Notice of Hearing	
Proposed Notice of Hearing	See last page of each application at Tab 2
Proof of Mailed Notice of Hearing (20 days before hearing)	Exhibit A-5; Exhibit C and Exhibit A attached thereto
Proof of Published Notice of Hearing (10 days before hearing)	Exhibit C and Exhibit B attached thereto
Ownership Determination	
Land Ownership Schematic of the Spacing Unit	Exhibit A-2
Tract List (including lease numbers and owners)	Exhibit A-2
Pooled Parties (including ownership type)	<i>See</i> Exhibit A-2; <i>see also</i> exhibit attached to each sample notice letter in Exhibit A-5

Unlocatable Parties to be Pooled	None
Ownership Depth Severance (including percentage above & below)	None
Joinder	
Sample Copy of Proposal Letter	Exhibit A-3
List of Interest Owners (ie Exhibit A of JOA)	Exhibit A-2
Chronology of Contact with Non-Joined Working Interests	Exhibit A-4
Overhead Rates In Proposal Letter	See Exhibit A-3 at AFEs
Cost Estimate to Drill and Complete	See Exhibit A-3 at AFEs
Cost Estimate to Equip Well	See Exhibit A-3 at AFEs
Cost Estimate for Production Facilities	See Exhibit A-3 at AFEs
Geology	
Summary (including special considerations)	Exhibit B at 2-4, paras. 7-12, and related exhibits
Spacing Unit Schematic	Exhibit A-2
Gunbarrel/Lateral Trajectory Schematic	Exhibit B-9
Well Orientation (with rationale)	Exhibit B at 5, para. 14(d)
Target Formation	Exhibit B-10
HSU Cross Section	Exhibits B-7 & B-8
Depth Severance Discussion	N/A
Forms, Figures and Tables	
C-102	Exhibit A-1
Tracts	Exhibit A-2
Summary of Interests, Unit Recapitulation (Tracts)	Exhibit A-2
General Location Map (including basin)	Exhibit B-1
Well Bore Location Map	Exhibit B-2
Structure Contour Map - Subsea Depth	Exhibit B-4
Cross Section Location Map (including wells)	Exhibit B-6
Cross Section (including Landing Zone)	Exhibits B-7 & B-8
Additional Information	None
CERTIFICATION: I hereby certify that the information provided in this checklist is complete and accurate.	
Printed Name (Attorney or Party Representative):	Sharon Shaheen
Signed Name (Attorney or Party Representative):	<i>Sharon A Shaheen</i>
Date:	10-Jul-20

District I
1625 N. French Dr., Hobbs, NM 88240
Phone: (575) 393-6161 Fax: (575) 393-0720
District II
811 S. First St., Artesia, NM 88210
Phone: (575) 748-1283 Fax: (575) 748-9720
District III
1000 Rio Brazos Road, Aztec, NM 87410
Phone: (505) 334-6178 Fax: (505) 334-6170
District IV
1220 S. St. Francis Dr., Santa Fe, NM 87505
Phone: (505) 476-3460 Fax: (505) 476-3462

State of New Mexico
Energy, Minerals & Natural Resources Department
OIL CONSERVATION DIVISION
1220 South St. Francis Dr.
Santa Fe, NM 87505

Form C-102
Revised August 1, 2011

Submit one copy to
appropriate District Office

☐ AMENDED REPORT

WELL LOCATION AND ACREAGE DEDICATION PLAT

¹ API Number	² Pool Code	³ Pool Name
⁴ Property Code	⁵ Property Name FULLY LOADED 12-1 FED COM	⁶ Well Number 331H
⁷ OGRID No. 6137	⁸ Operator Name DEVON ENERGY PRODUCTION COMPANY, L.P.	⁹ Elevation 3100.1'

¹⁰ Surface Location

UL or lot no.	Section	Township	Range	Lot Idn	Feet from the	North/South line	Feet from the	East/West line	County
E	12	24-S	29-E		1656	NORTH	1214	WEST	EDDY

¹¹ Bottom Hole Location If Different From Surface

UL or lot no.	Section	Township	Range	Lot Idn	Feet from the	North/South line	Feet from the	East/West line	County
LOT 4	1	24-S	29-E		20	NORTH	990	WEST	EDDY

¹² Dedicated Acres 240	¹³ Joint or Infill	¹⁴ Consolidation Code	¹⁵ Order No.
--------------------------------------	-------------------------------	----------------------------------	-------------------------

No allowable will be assigned to this completion until all interests have been consolidated or a non-standard unit has been approved by the division.

16

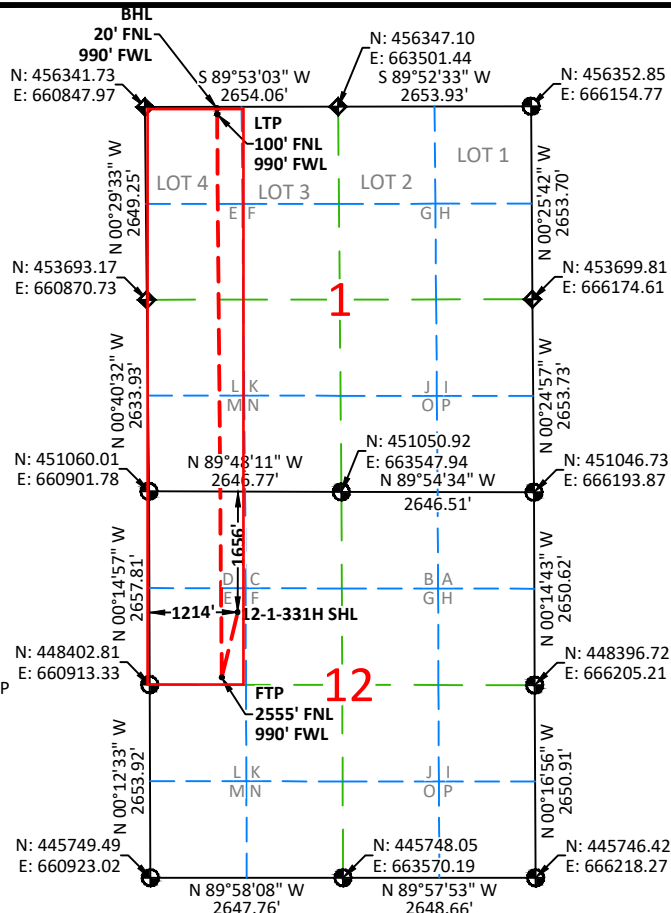
**FULLY LOADED
12-1 FED COM 331H**
ELEV: 3100.1'
LAT: 32.234873°
LON: -103.942692°
N: 449400.20
E: 662122.46

FIRST TAKE POINT
LAT: 32.232406°
LON: -103.943413°
N: 448501.65
E: 661902.69

LAST TAKE POINT
LAT: 32.253688°
LON: -103.943529°
N: 456243.76
E: 661838.62

BOTTOM HOLE LOCATION
LAT: 32.253908°
LON: -103.943531°
N: 456323.73
E: 661837.94

- 3.25" USGLO BRASS CAP
ON 2.5" IRON PIPE
- 2.5" USGLO BRASS CAP
ON 2" IRON PIPE



NOTES:

- BEARINGS SHOWN ARE GRID BASED ON THE NEW MEXICO STATE PLANE EAST ZONE COORDINATE SYSTEM (3001), NAD 83 (2011), BASED FROM GPS OBSERVATIONS, OCCUPYING A WHS CONTROL POINT (5/8" REBAR), LOCATED AT NORTH: 457834.965, EAST: 670241.029, ELEVATION: 2306.69, DETERMINED BY AN OPUS SOLUTION ON DECEMBER 3RD, 2018.
- DISTANCES DEPICTED HEREON ARE REPORTED AS GROUND DISTANCE IN US SURVEY FEET USING A COMBINED SCALE FACTOR OF 1.000221019
- ELEVATIONS ARE OF NAVD 88 COMPUTED USING GEIOD 12B.

¹⁷ OPERATOR CERTIFICATION

I hereby certify that the information contained herein is true and complete to the best of my knowledge and belief, and that this organization either owns a working interest or unleased mineral interest in the land including the proposed bottom hole location or has a right to drill this well at this location pursuant to a contract with an owner of such a mineral or working interest, or to a voluntary pooling agreement or a compulsory pooling order heretofore entered by the division.

Signature _____ Date _____

Printed Name _____

E-mail Address _____

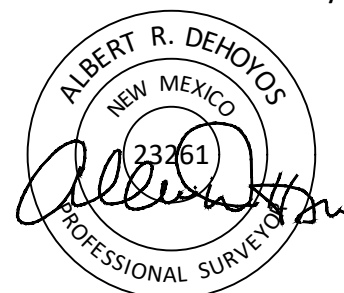
¹⁸ SURVEYOR CERTIFICATION

I hereby certify that the well location shown on this plat was plotted from field notes of actual surveys made by me or under my supervision, and that the same is true and correct to the best of my belief.

05/15/2020

Date of Survey

Signature and Seal of Professional Surveyor:



Certificate No. 23261 Albert Dehoyos
Drawn by: CED Checked by: ARD Date: 05/19/2020

REVISED EXHIBIT NO. A-1

Devon Energy Production Company
NMOCD Case Nos. 20508, 20509, 20510, 20511, 20512 and 20514 - May 28, 2020

District I
1625 N. French Dr., Hobbs, NM 88240
Phone: (575) 393-6161 Fax: (575) 393-0720
District II
811 S. First St., Artesia, NM 88210
Phone: (575) 748-1283 Fax: (575) 748-9720
District III
1000 Rio Brazos Road, Aztec, NM 87410
Phone: (505) 334-6178 Fax: (505) 334-6170
District IV
1220 S. St. Francis Dr., Santa Fe, NM 87505
Phone: (505) 476-3460 Fax: (505) 476-3462

State of New Mexico
Energy, Minerals & Natural Resources Department
OIL CONSERVATION DIVISION
1220 South St. Francis Dr.
Santa Fe, NM 87505

Form C-102
Revised August 1, 2011

Submit one copy to
appropriate District Office

☐ AMENDED REPORT

WELL LOCATION AND ACREAGE DEDICATION PLAT

¹ API Number	² Pool Code	³ Pool Name
⁴ Property Code	⁵ Property Name FULLY LOADED 12-1 FED COM	⁶ Well Number 332H
⁷ OGRID No. 6137	⁸ Operator Name DEVON ENERGY PRODUCTION COMPANY, L.P.	⁹ Elevation 3101.2'

¹⁰ Surface Location

UL or lot no. E	Section 12	Township 24-S	Range 29-E	Lot Idn	Feet from the 1656	North/South line NORTH	Feet from the 1274	East/West line WEST	County EDDY
--------------------	---------------	------------------	---------------	---------	-----------------------	---------------------------	-----------------------	------------------------	----------------

¹¹ Bottom Hole Location If Different From Surface

UL or lot no. LOT 3	Section 1	Township 24-S	Range 29-E	Lot Idn	Feet from the 20	North/South line NORTH	Feet from the 2310	East/West line WEST	County EDDY
------------------------	--------------	------------------	---------------	---------	---------------------	---------------------------	-----------------------	------------------------	----------------

¹² Dedicated Acres 240	¹³ Joint or Infill	¹⁴ Consolidation Code	¹⁵ Order No.
--------------------------------------	-------------------------------	----------------------------------	-------------------------

No allowable will be assigned to this completion until all interests have been consolidated or a non-standard unit has been approved by the division.

16

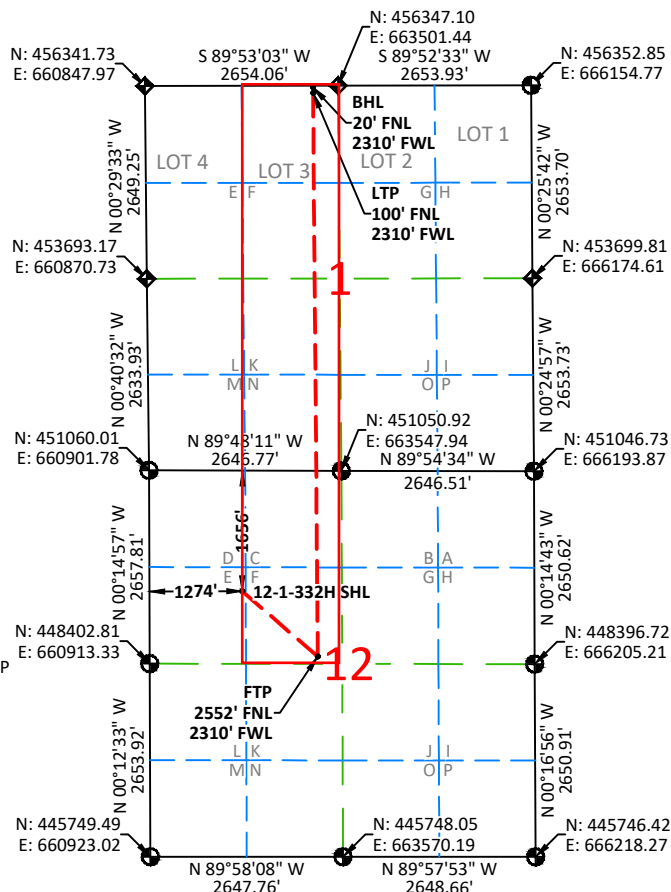
**FULLY LOADED
12-1 FED COM 332H**
ELEV: 3101.2'
LAT: 32.234872°
LON: -103.942498°
N: 449400.00
E: 662182.46

FIRST TAKE POINT
LAT: 32.232388°
LON: -103.939145°
N: 448500.13
E: 663222.42

LAST TAKE POINT
LAT: 32.253678°
LON: -103.939260°
N: 456246.43
E: 663158.36

BOTTOM HOLE LOCATION
LAT: 32.253902°
LON: -103.939261°
N: 456326.41
E: 663157.67

- 3.25" USGLO BRASS CAP
ON 2.5" IRON PIPE
- 2.5" USGLO BRASS CAP
ON 2" IRON PIPE



¹⁷ OPERATOR CERTIFICATION

I hereby certify that the information contained herein is true and complete to the best of my knowledge and belief, and that this organization either owns a working interest or unleased mineral interest in the land including the proposed bottom hole location or has a right to drill this well at this location pursuant to a contract with an owner of such a mineral or working interest, or to a voluntary pooling agreement or a compulsory pooling order heretofore entered by the division.

Signature _____ Date _____

Printed Name _____

E-mail Address _____

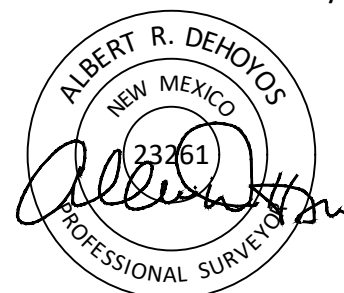
¹⁸ SURVEYOR CERTIFICATION

I hereby certify that the well location shown on this plat was plotted from field notes of actual surveys made by me or under my supervision, and that the same is true and correct to the best of my belief.

05/15/2020

Date of Survey

Signature and Seal of Professional Surveyor:



Certificate No. 23261 Albert Dehoyos
Drawn by: CED Checked by: ARD Date: 05/19/2020

NOTES:

- BEARINGS SHOWN ARE GRID BASED ON THE NEW MEXICO STATE PLANE EAST ZONE COORDINATE SYSTEM (3001), NAD 83 (2011), BASED FROM GPS OBSERVATIONS, OCCUPYING A WHS CONTROL POINT (5/8" REBAR), LOCATED AT NORTH: 457834.965, EAST: 670241.029, ELEVATION: 2306.69, DETERMINED BY AN OPUS SOLUTION ON DECEMBER 3RD, 2018.
- DISTANCES DEPICTED HEREON ARE REPORTED AS GROUND DISTANCE IN US SURVEY FEET USING A COMBINED SCALE FACTOR OF 1.000221019
- ELEVATIONS ARE OF NAVD 88 COMPUTED USING GEIOD 12B.

District I
1625 N. French Dr., Hobbs, NM 88240
Phone: (575) 393-6161 Fax: (575) 393-0720
District II
811 S. First St., Artesia, NM 88210
Phone: (575) 748-1283 Fax: (575) 748-9720
District III
1000 Rio Brazos Road, Aztec, NM 87410
Phone: (505) 334-6178 Fax: (505) 334-6170
District IV
1220 S. St. Francis Dr., Santa Fe, NM 87505
Phone: (505) 476-3460 Fax: (505) 476-3462

State of New Mexico
Energy, Minerals & Natural Resources Department
OIL CONSERVATION DIVISION
1220 South St. Francis Dr.
Santa Fe, NM 87505

Form C-102
Revised August 1, 2011

Submit one copy to
appropriate District Office

☐ AMENDED REPORT

WELL LOCATION AND ACREAGE DEDICATION PLAT

¹ API Number	² Pool Code	³ Pool Name
⁴ Property Code	⁵ Property Name FULLY LOADED 12-1 FED COM	⁶ Well Number 621H
⁷ OGRID No. 6137	⁸ Operator Name DEVON ENERGY PRODUCTION COMPANY, L.P.	⁹ Elevation 3100.0'

¹⁰ Surface Location

UL or lot no.	Section	Township	Range	Lot Idn	Feet from the	North/South line	Feet from the	East/West line	County
E	12	24-S	29-E		1656	NORTH	1184	WEST	EDDY

¹¹ Bottom Hole Location If Different From Surface

UL or lot no.	Section	Township	Range	Lot Idn	Feet from the	North/South line	Feet from the	East/West line	County
LOT 4	1	24-S	29-E		20	NORTH	330	WEST	EDDY

¹² Dedicated Acres 480	¹³ Joint or Infill	¹⁴ Consolidation Code	¹⁵ Order No.
--------------------------------------	-------------------------------	----------------------------------	-------------------------

No allowable will be assigned to this completion until all interests have been consolidated or a non-standard unit has been approved by the division.

16

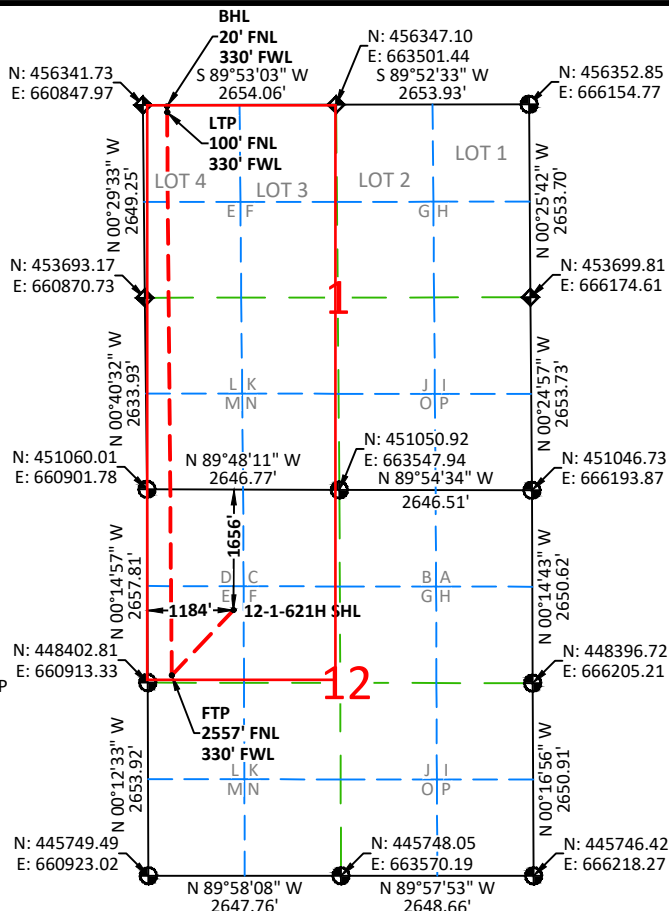
**FULLY LOADED
12-1 FED COM 621H**
ELEV: 3100.0'
LAT: 32.234874°
LON: -103.942789°
N: 449400.31
E: 662092.46

FIRST TAKE POINT
LAT: 32.232414°
LON: -103.945547°
N: 448502.41
E: 661242.83

LAST TAKE POINT
LAT: 32.253691°
LON: -103.945664°
N: 456242.42
E: 661178.76

BOTTOM HOLE LOCATION
LAT: 32.253911°
LON: -103.945665°
N: 456322.40
E: 661178.07

- 3.25" USGLO BRASS CAP
ON 2.5" IRON PIPE
- 2.5" USGLO BRASS CAP
ON 2" IRON PIPE



¹⁷ OPERATOR CERTIFICATION

I hereby certify that the information contained herein is true and complete to the best of my knowledge and belief, and that this organization either owns a working interest or unleased mineral interest in the land including the proposed bottom hole location or has a right to drill this well at this location pursuant to a contract with an owner of such a mineral or working interest, or to a voluntary pooling agreement or a compulsory pooling order heretofore entered by the division.

Signature _____ Date _____

Printed Name _____

E-mail Address _____

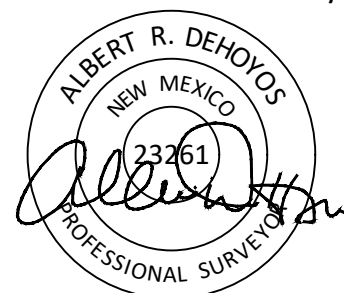
¹⁸ SURVEYOR CERTIFICATION

I hereby certify that the well location shown on this plat was plotted from field notes of actual surveys made by me or under my supervision, and that the same is true and correct to the best of my belief.

05/15/2020

Date of Survey

Signature and Seal of Professional Surveyor:



NOTES:

- BEARINGS SHOWN ARE GRID BASED ON THE NEW MEXICO STATE PLANE EAST ZONE COORDINATE SYSTEM (3001), NAD 83 (2011), BASED FROM GPS OBSERVATIONS, OCCUPYING A WHS CONTROL POINT (5/8" REBAR), LOCATED AT NORTH: 457834.965, EAST: 670241.029, ELEVATION: 2306.69, DETERMINED BY AN OPUS SOLUTION ON DECEMBER 3RD, 2018.
- DISTANCES DEPICTED HEREON ARE REPORTED AS GROUND DISTANCE IN US SURVEY FEET USING A COMBINED SCALE FACTOR OF 1.000221019
- ELEVATIONS ARE OF NAVD 88 COMPUTED USING GEIOD 12B.

Certificate No. 23261 Albert Dehoyos
Drawn by: CED Checked by: ARD Date: 05/19/2020

District I
1625 N. French Dr., Hobbs, NM 88240
Phone: (575) 393-6161 Fax: (575) 393-0720
District II
811 S. First St., Artesia, NM 88210
Phone: (575) 748-1283 Fax: (575) 748-9720
District III
1000 Rio Brazos Road, Aztec, NM 87410
Phone: (505) 334-6178 Fax: (505) 334-6170
District IV
1220 S. St. Francis Dr., Santa Fe, NM 87505
Phone: (505) 476-3460 Fax: (505) 476-3462

State of New Mexico
Energy, Minerals & Natural Resources Department
OIL CONSERVATION DIVISION
1220 South St. Francis Dr.
Santa Fe, NM 87505

Form C-102
Revised August 1, 2011

Submit one copy to
appropriate District Office

☐ AMENDED REPORT

WELL LOCATION AND ACREAGE DEDICATION PLAT

¹ API Number	² Pool Code	³ Pool Name
⁴ Property Code	⁵ Property Name FULLY LOADED 12-1 FED COM	⁶ Well Number 622H
⁷ OGRID No. 6137	⁸ Operator Name DEVON ENERGY PRODUCTION COMPANY, L.P.	⁹ Elevation 3100.6'

¹⁰ Surface Location

UL or lot no.	Section	Township	Range	Lot Idn	Feet from the	North/South line	Feet from the	East/West line	County
E	12	24-S	29-E		1656	NORTH	1244	WEST	EDDY

¹¹ Bottom Hole Location If Different From Surface

UL or lot no.	Section	Township	Range	Lot Idn	Feet from the	North/South line	Feet from the	East/West line	County
LOT 3	1	24-S	29-E		20	NORTH	1650	WEST	EDDY

¹² Dedicated Acres 480	¹³ Joint or Infill	¹⁴ Consolidation Code	¹⁵ Order No.
--------------------------------------	-------------------------------	----------------------------------	-------------------------

No allowable will be assigned to this completion until all interests have been consolidated or a non-standard unit has been approved by the division.

16

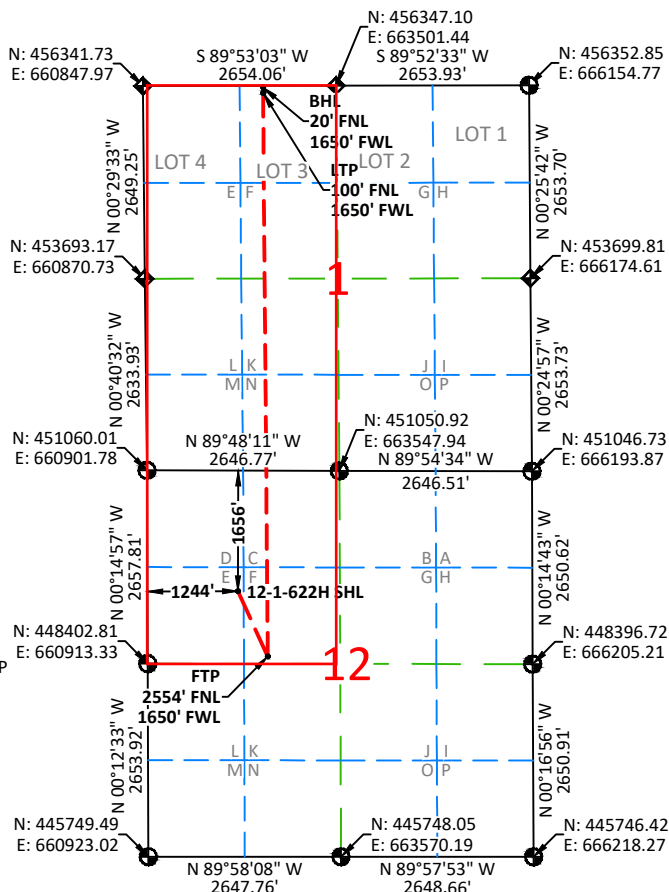
**FULLY LOADED
12-1 FED COM 622H**
ELEV: 3100.6'
LAT: 32.234873°
LON: -103.942595°
N: 449400.10
E: 662152.46

FIRST TAKE POINT
LAT: 32.232397°
LON: -103.941279°
N: 448500.89
E: 662562.55

LAST TAKE POINT
LAT: 32.253685°
LON: -103.941395°
N: 456245.09
E: 662498.49

BOTTOM HOLE LOCATION
LAT: 32.253905°
LON: -103.941396°
N: 456325.07
E: 662497.80

- 3.25" USGLO BRASS CAP
ON 2.5" IRON PIPE
- 2.5" USGLO BRASS CAP
ON 2" IRON PIPE



¹⁷ OPERATOR CERTIFICATION

I hereby certify that the information contained herein is true and complete to the best of my knowledge and belief, and that this organization either owns a working interest or unleased mineral interest in the land including the proposed bottom hole location or has a right to drill this well at this location pursuant to a contract with an owner of such a mineral or working interest, or to a voluntary pooling agreement or a compulsory pooling order heretofore entered by the division.

Signature _____ Date _____

Printed Name _____

E-mail Address _____

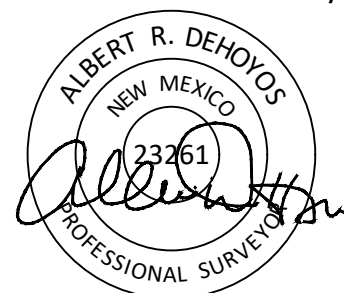
¹⁸ SURVEYOR CERTIFICATION

I hereby certify that the well location shown on this plat was plotted from field notes of actual surveys made by me or under my supervision, and that the same is true and correct to the best of my belief.

05/15/2020

Date of Survey

Signature and Seal of Professional Surveyor:



Certificate No. 23261 Albert Dehoyos
Drawn by: CED Checked by: ARD Date: 05/19/2020

NOTES:

- BEARINGS SHOWN ARE GRID BASED ON THE NEW MEXICO STATE PLANE EAST ZONE COORDINATE SYSTEM (3001), NAD 83 (2011), BASED FROM GPS OBSERVATIONS, OCCUPYING A WHS CONTROL POINT (5/8" REBAR), LOCATED AT NORTH: 457834.965, EAST: 670241.029, ELEVATION: 2306.69, DETERMINED BY AN OPUS SOLUTION ON DECEMBER 3RD, 2018.
- DISTANCES DEPICTED HEREON ARE REPORTED AS GROUND DISTANCE IN US SURVEY FEET USING A COMBINED SCALE FACTOR OF 1.000221019
- ELEVATIONS ARE OF NAVD 88 COMPUTED USING GEIOD 12B.

District I
1625 N. French Dr., Hobbs, NM 88240
Phone: (575) 393-6161 Fax: (575) 393-0720
District II
811 S. First St., Artesia, NM 88210
Phone: (575) 748-1283 Fax: (575) 748-9720
District III
1000 Rio Brazos Road, Aztec, NM 87410
Phone: (505) 334-6178 Fax: (505) 334-6170
District IV
1220 S. St. Francis Dr., Santa Fe, NM 87505
Phone: (505) 476-3460 Fax: (505) 476-3462

State of New Mexico
Energy, Minerals & Natural Resources Department
OIL CONSERVATION DIVISION
1220 South St. Francis Dr.
Santa Fe, NM 87505

Form C-102
Revised August 1, 2011

Submit one copy to
appropriate District Office

☐ AMENDED REPORT

WELL LOCATION AND ACREAGE DEDICATION PLAT

¹ API Number	² Pool Code	³ Pool Name
⁴ Property Code	⁵ Property Name FULLY LOADED 12-13 FED COM	⁶ Well Number 331H
⁷ OGRID No. 6137	⁸ Operator Name DEVON ENERGY PRODUCTION COMPANY, L.P.	⁹ Elevation 3093.9'

¹⁰ Surface Location

UL or lot no.	Section	Township	Range	Lot Idn	Feet from the	North/South line	Feet from the	East/West line	County
E	12	24-S	29-E		2258	NORTH	1235	WEST	EDDY

¹¹ Bottom Hole Location If Different From Surface

UL or lot no.	Section	Township	Range	Lot Idn	Feet from the	North/South line	Feet from the	East/West line	County
M	13	24-S	29-E		20	SOUTH	990	WEST	EDDY

¹² Dedicated Acres 240	¹³ Joint or Infill	¹⁴ Consolidation Code	¹⁵ Order No.
--------------------------------------	-------------------------------	----------------------------------	-------------------------

No allowable will be assigned to this completion until all interests have been consolidated or a non-standard unit has been approved by the division.

16

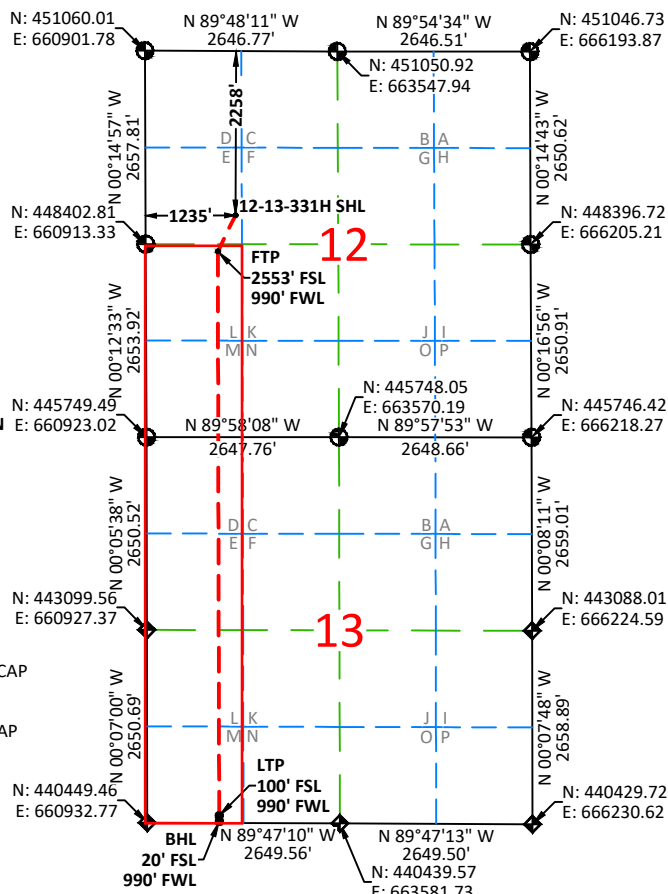
**FULLY LOADED
12-13 FED COM 331H**
ELEV: 3093.9'
LAT: 32.233219°
LON: -103.942621°
N: 448798.56
E: 662146.37

FIRST TAKE POINT
LAT: 32.231856°
LON: -103.943413°
N: 448301.69
E: 661903.49

LAST TAKE POINT
LAT: 32.210536°
LON: -103.943443°
N: 440545.74
E: 661922.35

BOTTOM HOLE LOCATION
LAT: 32.210316°
LON: -103.943443°
N: 440465.76
E: 661922.52

- 3.25" USGLO BRASS CAP
ON 2.5" IRON PIPE
- 2.5" USGLO BRASS CAP
ON 2" IRON PIPE



NOTES:

- BEARINGS SHOWN ARE GRID BASED ON THE NEW MEXICO STATE PLANE EAST ZONE COORDINATE SYSTEM (3001), NAD 83 (2011), BASED FROM GPS OBSERVATIONS, OCCUPYING A WHS CONTROL POINT (5/8" REBAR), LOCATED AT NORTH: 457834.965, EAST: 670241.029, ELEVATION: 2306.69, DETERMINED BY AN OPUS SOLUTION ON DECEMBER 3RD, 2018.
- DISTANCES DEPICTED HEREON ARE REPORTED AS GROUND DISTANCE IN US SURVEY FEET USING A COMBINED SCALE FACTOR OF 1.000221019
- ELEVATIONS ARE OF NAVD 88 COMPUTED USING GEIOD 12B.

¹⁷ OPERATOR CERTIFICATION

I hereby certify that the information contained herein is true and complete to the best of my knowledge and belief, and that this organization either owns a working interest or unleased mineral interest in the land including the proposed bottom hole location or has a right to drill this well at this location pursuant to a contract with an owner of such a mineral or working interest, or to a voluntary pooling agreement or a compulsory pooling order heretofore entered by the division.

Signature _____ Date _____

Printed Name _____

E-mail Address _____

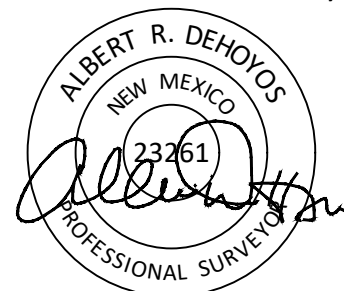
¹⁸ SURVEYOR CERTIFICATION

I hereby certify that the well location shown on this plat was plotted from field notes of actual surveys made by me or under my supervision, and that the same is true and correct to the best of my belief.

05/15/2020

Date of Survey

Signature and Seal of Professional Surveyor:



Certificate No. 23261 Albert Dehoyos
Drawn by: CED Checked by: ARD Date: 05/19/2020

District I
1625 N. French Dr., Hobbs, NM 88240
Phone: (575) 393-6161 Fax: (575) 393-0720
District II
811 S. First St., Artesia, NM 88210
Phone: (575) 748-1283 Fax: (575) 748-9720
District III
1000 Rio Brazos Road, Aztec, NM 87410
Phone: (505) 334-6178 Fax: (505) 334-6170
District IV
1220 S. St. Francis Dr., Santa Fe, NM 87505
Phone: (505) 476-3460 Fax: (505) 476-3462

State of New Mexico
Energy, Minerals & Natural Resources Department
OIL CONSERVATION DIVISION
1220 South St. Francis Dr.
Santa Fe, NM 87505

Form C-102
Revised August 1, 2011

Submit one copy to
appropriate District Office

☐ AMENDED REPORT

WELL LOCATION AND ACREAGE DEDICATION PLAT

¹ API Number	² Pool Code	³ Pool Name
⁴ Property Code	⁵ Property Name FULLY LOADED 12-13 FED COM	⁶ Well Number 332H
⁷ OGRID No. 6137	⁸ Operator Name DEVON ENERGY PRODUCTION COMPANY, L.P.	⁹ Elevation 3094.5'

¹⁰ Surface Location

UL or lot no.	Section	Township	Range	Lot Idn	Feet from the	North/South line	Feet from the	East/West line	County
E	12	24-S	29-E		2257	NORTH	1295	WEST	EDDY

¹¹ Bottom Hole Location If Different From Surface

UL or lot no.	Section	Township	Range	Lot Idn	Feet from the	North/South line	Feet from the	East/West line	County
N	13	24-S	29-E		20	SOUTH	2310	WEST	EDDY

¹² Dedicated Acres 240	¹³ Joint or Infill	¹⁴ Consolidation Code	¹⁵ Order No.
--------------------------------------	-------------------------------	----------------------------------	-------------------------

No allowable will be assigned to this completion until all interests have been consolidated or a non-standard unit has been approved by the division.

16

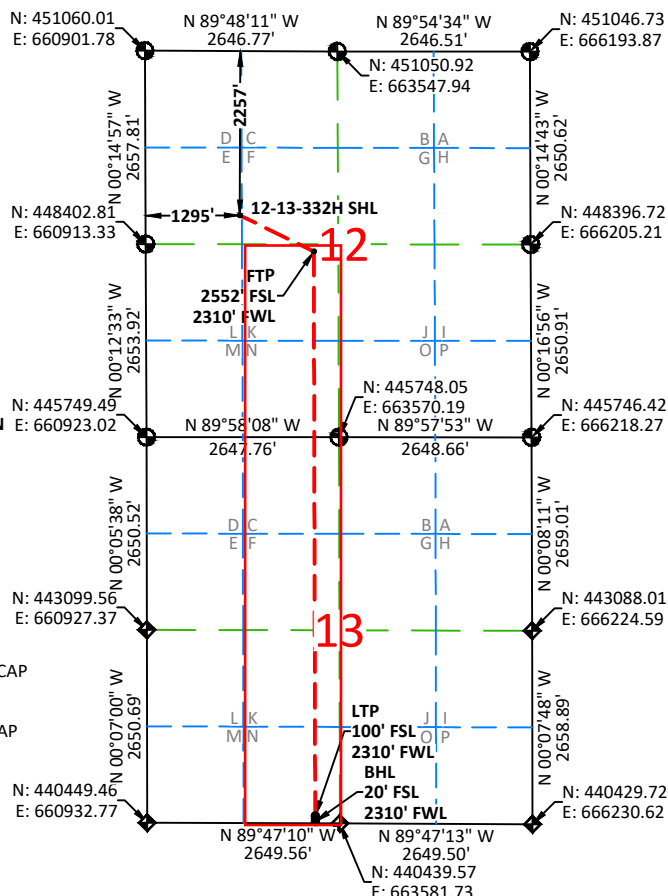
**FULLY LOADED
12-13 FED COM 332H**
ELEV: 3094.5'
LAT: 32.233219°
LON: -103.942427°
N: 448798.56
E: 662206.37

FIRST TAKE POINT
LAT: 32.231839°
LON: -103.939145°
N: 448300.17
E: 663223.21

LAST TAKE POINT
LAT: 32.210509°
LON: -103.939176°
N: 440540.82
E: 663242.08

BOTTOM HOLE LOCATION
LAT: 32.210289°
LON: -103.939176°
N: 440460.83
E: 663242.24

- 3.25" USGLO BRASS CAP
ON 2.5" IRON PIPE
- 2.5" USGLO BRASS CAP
ON 2" IRON PIPE



NOTES:

- BEARINGS SHOWN ARE GRID BASED ON THE NEW MEXICO STATE PLANE EAST ZONE COORDINATE SYSTEM (3001), NAD 83 (2011), BASED FROM GPS OBSERVATIONS, OCCUPYING A WHS CONTROL POINT (5/8" REBAR), LOCATED AT NORTH: 457834.965, EAST: 670241.029, ELEVATION: 2306.69, DETERMINED BY AN OPUS SOLUTION ON DECEMBER 3RD, 2018.
- DISTANCES DEPICTED HEREON ARE REPORTED AS GROUND DISTANCE IN US SURVEY FEET USING A COMBINED SCALE FACTOR OF 1.000221019
- ELEVATIONS ARE OF NAVD 88 COMPUTED USING GEOID 12B.

¹⁷ OPERATOR CERTIFICATION

I hereby certify that the information contained herein is true and complete to the best of my knowledge and belief, and that this organization either owns a working interest or unleased mineral interest in the land including the proposed bottom hole location or has a right to drill this well at this location pursuant to a contract with an owner of such a mineral or working interest, or to a voluntary pooling agreement or a compulsory pooling order heretofore entered by the division.

Signature _____ Date _____

Printed Name _____

E-mail Address _____

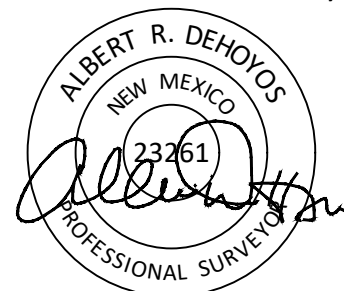
¹⁸ SURVEYOR CERTIFICATION

I hereby certify that the well location shown on this plat was plotted from field notes of actual surveys made by me or under my supervision, and that the same is true and correct to the best of my belief.

05/15/2020

Date of Survey

Signature and Seal of Professional Surveyor:



Certificate No. 23261 Albert Dehoyos
Drawn by: CED Checked by: ARD Date: 05/19/2020

District I
1625 N. French Dr., Hobbs, NM 88240
Phone: (575) 393-6161 Fax: (575) 393-0720
District II
811 S. First St., Artesia, NM 88210
Phone: (575) 748-1283 Fax: (575) 748-9720
District III
1000 Rio Brazos Road, Aztec, NM 87410
Phone: (505) 334-6178 Fax: (505) 334-6170
District IV
1220 S. St. Francis Dr., Santa Fe, NM 87505
Phone: (505) 476-3460 Fax: (505) 476-3462

State of New Mexico
Energy, Minerals & Natural Resources Department
OIL CONSERVATION DIVISION
1220 South St. Francis Dr.
Santa Fe, NM 87505

Form C-102
Revised August 1, 2011

Submit one copy to
appropriate District Office

☐ AMENDED REPORT

WELL LOCATION AND ACREAGE DEDICATION PLAT

¹ API Number	² Pool Code	³ Pool Name
⁴ Property Code	⁵ Property Name FULLY LOADED 12-13 FED COM	⁶ Well Number 622H
⁷ OGRID No. 6137	⁸ Operator Name DEVON ENERGY PRODUCTION COMPANY, L.P.	⁹ Elevation 3094.3'

¹⁰ Surface Location

UL or lot no.	Section	Township	Range	Lot Idn	Feet from the	North/South line	Feet from the	East/West line	County
E	12	24-S	29-E		2258	NORTH	1265	WEST	EDDY

¹¹ Bottom Hole Location If Different From Surface

UL or lot no.	Section	Township	Range	Lot Idn	Feet from the	North/South line	Feet from the	East/West line	County
N	13	24-S	29-E		20	SOUTH	1650	WEST	EDDY

¹² Dedicated Acres 480	¹³ Joint or Infill	¹⁴ Consolidation Code	¹⁵ Order No.
--------------------------------------	-------------------------------	----------------------------------	-------------------------

No allowable will be assigned to this completion until all interests have been consolidated or a non-standard unit has been approved by the division.

16

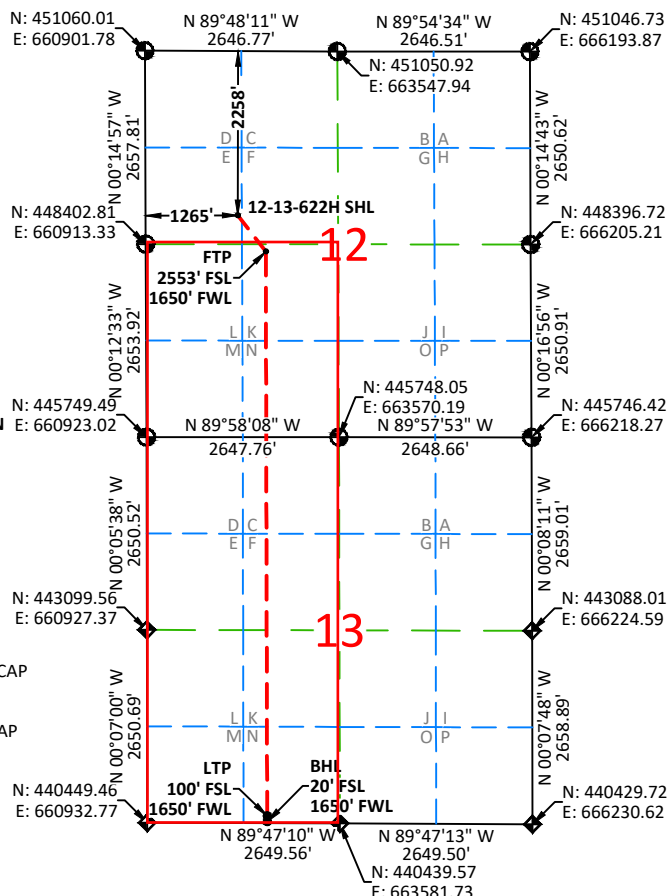
**FULLY LOADED
12-13 FED COM 622H**
ELEV: 3094.3'
LAT: 32.233219°
LON: -103.942524°
N: 448798.56
E: 662176.37

FIRST TAKE POINT
LAT: 32.231847°
LON: -103.941279°
N: 448300.93
E: 662563.35

LAST TAKE POINT
LAT: 32.210523°
LON: -103.941309°
N: 440543.28
E: 662582.21

BOTTOM HOLE LOCATION
LAT: 32.210303°
LON: -103.941310°
N: 440463.30
E: 662582.38

- 3.25" USGLO BRASS CAP
ON 2.5" IRON PIPE
- 2.5" USGLO BRASS CAP
ON 2" IRON PIPE



NOTES:

- BEARINGS SHOWN ARE GRID BASED ON THE NEW MEXICO STATE PLANE EAST ZONE COORDINATE SYSTEM (3001), NAD 83 (2011), BASED FROM GPS OBSERVATIONS, OCCUPYING A WHS CONTROL POINT (5/8" REBAR), LOCATED AT NORTH: 457834.965, EAST: 670241.029, ELEVATION: 2306.69, DETERMINED BY AN OPUS SOLUTION ON DECEMBER 3RD, 2018.
- DISTANCES DEPICTED HEREON ARE REPORTED AS GROUND DISTANCE IN US SURVEY FEET USING A COMBINED SCALE FACTOR OF 1.000221019
- ELEVATIONS ARE OF NAVD 88 COMPUTED USING GEIOD 12B.

¹⁷ OPERATOR CERTIFICATION

I hereby certify that the information contained herein is true and complete to the best of my knowledge and belief, and that this organization either owns a working interest or unleased mineral interest in the land including the proposed bottom hole location or has a right to drill this well at this location pursuant to a contract with an owner of such a mineral or working interest, or to a voluntary pooling agreement or a compulsory pooling order heretofore entered by the division.

Signature _____ Date _____

Printed Name _____

E-mail Address _____

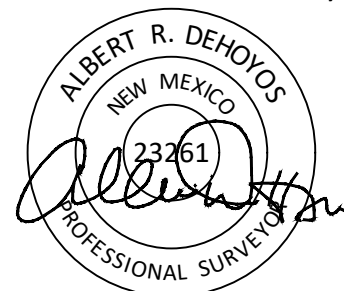
¹⁸ SURVEYOR CERTIFICATION

I hereby certify that the well location shown on this plat was plotted from field notes of actual surveys made by me or under my supervision, and that the same is true and correct to the best of my belief.

05/15/2020

Date of Survey

Signature and Seal of Professional Surveyor:



Certificate No. 23261 Albert Dehoyos
Drawn by: CED Checked by: ARD Date: 05/19/2020

District I
1625 N. French Dr., Hobbs, NM 88240
Phone: (575) 393-6161 Fax: (575) 393-0720
District II
811 S. First St., Artesia, NM 88210
Phone: (575) 748-1283 Fax: (575) 748-9720
District III
1000 Rio Brazos Road, Aztec, NM 87410
Phone: (505) 334-6178 Fax: (505) 334-6170
District IV
1220 S. St. Francis Dr., Santa Fe, NM 87505
Phone: (505) 476-3460 Fax: (505) 476-3462

State of New Mexico
Energy, Minerals & Natural Resources Department
OIL CONSERVATION DIVISION
1220 South St. Francis Dr.
Santa Fe, NM 87505

Form C-102
Revised August 1, 2011

Submit one copy to
appropriate District Office

☐ AMENDED REPORT

WELL LOCATION AND ACREAGE DEDICATION PLAT

¹ API Number	² Pool Code	³ Pool Name
⁴ Property Code	⁵ Property Name FULLY LOADED 12-13 FED COM	⁶ Well Number 621H
⁷ OGRID No. 6137	⁸ Operator Name DEVON ENERGY PRODUCTION COMPANY, L.P.	⁹ Elevation 3093.6'

¹⁰ Surface Location

UL or lot no.	Section	Township	Range	Lot Idn	Feet from the	North/South line	Feet from the	East/West line	County
E	12	24-S	29-E		2258	NORTH	1205	WEST	EDDY

¹¹ Bottom Hole Location If Different From Surface

UL or lot no.	Section	Township	Range	Lot Idn	Feet from the	North/South line	Feet from the	East/West line	County
M	13	24-S	29-E		20	SOUTH	330	WEST	EDDY

¹² Dedicated Acres 480	¹³ Joint or Infill	¹⁴ Consolidation Code	¹⁵ Order No.
--------------------------------------	-------------------------------	----------------------------------	-------------------------

No allowable will be assigned to this completion until all interests have been consolidated or a non-standard unit has been approved by the division.

16

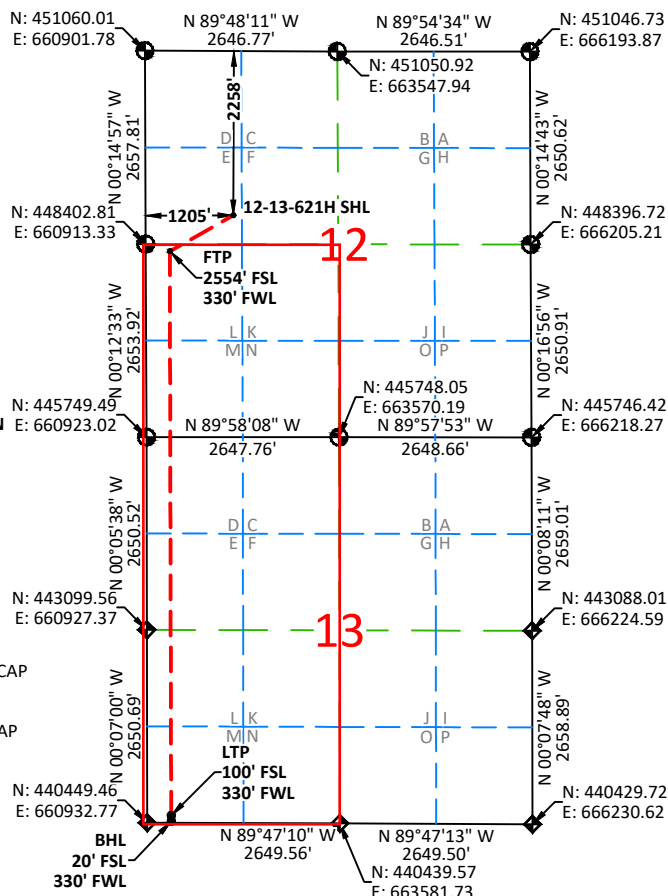
**FULLY LOADED
12-13 FED COM 621H**
ELEV: 3093.6'
LAT: 32.233220°
LON: -103.942718°
N: 448798.56
E: 662116.37

FIRST TAKE POINT
LAT: 32.231856°
LON: -103.945547°
N: 448302.45
E: 661243.62

LAST TAKE POINT
LAT: 32.210549°
LON: -103.945576°
N: 440548.21
E: 661262.49

BOTTOM HOLE LOCATION
LAT: 32.210329°
LON: -103.945577°
N: 440468.23
E: 661262.66

- 3.25" USGLO BRASS CAP
ON 2.5" IRON PIPE
- 2.5" USGLO BRASS CAP
ON 2" IRON PIPE



NOTES:

- BEARINGS SHOWN ARE GRID BASED ON THE NEW MEXICO STATE PLANE EAST ZONE COORDINATE SYSTEM (3001), NAD 83 (2011), BASED FROM GPS OBSERVATIONS, OCCUPYING A WHS CONTROL POINT (5/8" REBAR), LOCATED AT NORTH: 457834.965, EAST: 670241.029, ELEVATION: 2306.69, DETERMINED BY AN OPUS SOLUTION ON DECEMBER 3RD, 2018.
- DISTANCES DEPICTED HEREON ARE REPORTED AS GROUND DISTANCE IN US SURVEY FEET USING A COMBINED SCALE FACTOR OF 1.000221019
- ELEVATIONS ARE OF NAVD 88 COMPUTED USING GEIOD 12B.

¹⁷ OPERATOR CERTIFICATION

I hereby certify that the information contained herein is true and complete to the best of my knowledge and belief, and that this organization either owns a working interest or unleased mineral interest in the land including the proposed bottom hole location or has a right to drill this well at this location pursuant to a contract with an owner of such a mineral or working interest, or to a voluntary pooling agreement or a compulsory pooling order heretofore entered by the division.

Signature _____ Date _____

Printed Name _____

E-mail Address _____

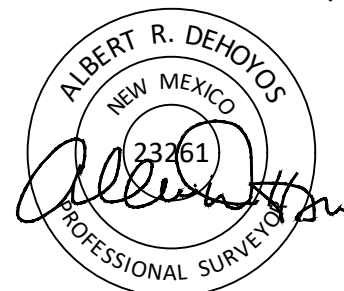
¹⁸ SURVEYOR CERTIFICATION

I hereby certify that the well location shown on this plat was plotted from field notes of actual surveys made by me or under my supervision, and that the same is true and correct to the best of my belief.

05/15/2020

Date of Survey

Signature and Seal of Professional Surveyor:



Certificate No. 23261 Albert Dehoyos
Drawn by: CED Checked by: ARD Date: 05/19/2020