



# United States Department of the Interior

BUREAU OF LAND MANAGEMENT  
Wyoming State Office Reservoir Management Group  
2987 Prospector Drive  
Casper, Wyoming 82604-2968



In Reply Refer To:  
3186  
(3186.1)  
Poker Lake Unit  
NMNM71016X

JUL 23 2021

R-153  
Case 364

XTO Permian Operating, LLC  
Attn: C.R. Salinas  
Land Dept., Loc. 115 (W4.4A.288)  
22777 Springwoods Village Parkway  
Spring, TX 77389-1425

Re: Initial Morrow Formation Participating Area "C"  
Poker Lake Unit  
Eddy County, New Mexico

Gentlemen:

The Initial Morrow Formation Participating Area "C" is hereby approved effective as of October 26, 2009, pursuant to Section 11 of the Poker Lake Unit Agreement, Eddy County, New Mexico. This participating area has been designated NMNM71016AL.

The application establishes an Initial Morrow Formation Participating Area "C" of 320.00 acres and is based upon the completion of unit well 199, located in the SE $\frac{1}{4}$ SW $\frac{1}{4}$  (SHL) of Section 28, T.24S., R.31E., unit tract No. 3A, Lease No. NMNM0522A, with an initial potential of 1,017 MCFPD from the Morrow Formation. The well first produced on October 26, 2009.

Copies of the approved request are being distributed to the appropriate agencies and one copy of Exhibits "A" and "B" is returned herewith. Please advise all interested parties of the approval of the Initial Morrow Formation Participating Area "C" effective as of October 26, 2009.

Any production royalties that are due must be reported and paid within 30 days of the Bureau of Land Management's approval date or the payors will be assessed interest for late payment under the Federal Oil and Gas Royalty Management Act of 1982 (30 CFR 218.54). If you need assistance or clarifications, please contact the Office of Natural Resources Revenue at <http://onrr.gov> or <https://onrr.gov/about/contact.htm>.



If you have any questions, please call the undersigned at (307) 261-7685.

Sincerely,

**/S/ J. David Chase**

J. David Chase  
Chief, Reservoir Management Group

1 Enclosure

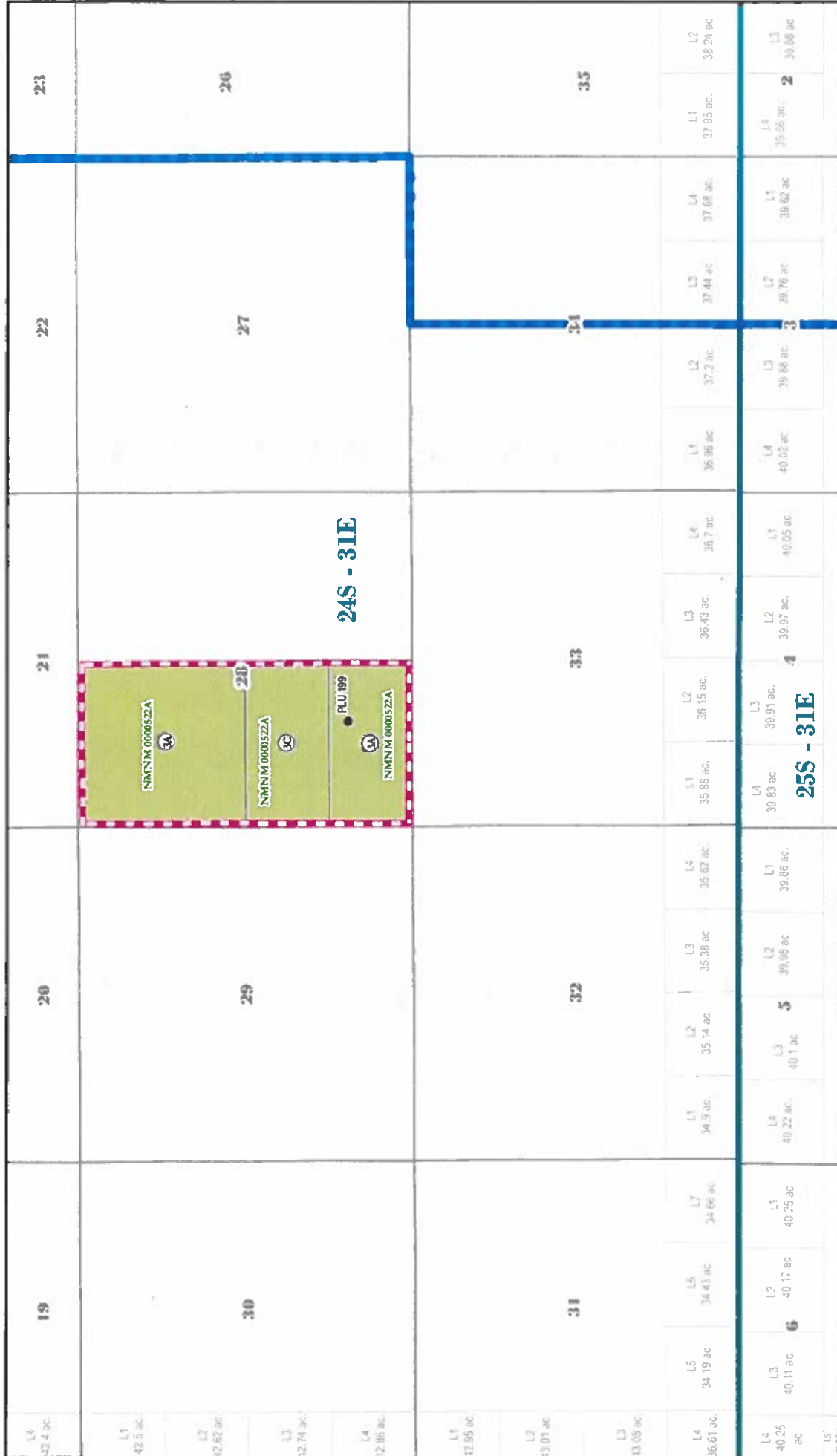
Encl. 1 - Exhibits "A" and "B"

cc: NMSO, Sheila Mallory w/exhibits A & B  
ONRR-RRM (email: [leases.blm@onrr.gov](mailto:leases.blm@onrr.gov)) w/exhibits A & B  
New Mexico State Land Office, Scott Dawson w/exhibits A & B  
New Mexico Oil Conservation Division, Leonard Lowe w/exhibits A & B



**EXHIBIT "A"**  
**INITIAL MORROW FORMATION PARTICIPATING AREA "C"**  
**PLU 199, POKER LAKE UNIT**  
**EDDY COUNTY, NM**  
**EFFECTIVE OCTOBER 26, 2009**

Date: 7/21/2021



**RECEIVED**

**JUL 22 2021**

Bureau of Land Management  
Reservoir Management Group

0 0.125 0.25 0.5 0.75 1 Miles

POKER LAKE UNIT  
 CAPABLE WELL (BHL/VERTICAL)  
 CAPABLE WELL (SHL)  
 PROPOSED DELAWARE PA "BDEFH"  
 FEDERAL ACREAGE WITHIN PA  
 REVISED ACREAGE



RECEIVED

JUL 22 2021

Bureau of Land Management  
Reservoir Management Group

EXHIBIT "B"  
SCHEDULE OF LANDS AND TRACT PARTICIPATION  
INITIAL MORROW FORMATION PARTICIPATING AREA "C"  
POKER LAKE UNIT  
EDDY COUNTY, NEW MEXICO  
EFFECTIVE OCTOBER 26, 2009

Tract No.	Lease No.	Description	Acres	Participation
3A	NMNM0522A Federal	Township 24 South - Range 31 East, N.M.P.M. Section 28: NW/4, S/2SW/4	240.00	75.00000%
3C	NMNM0522A Federal	Township 24 South - Range 31 East, N.M.P.M. Section 28: N/2SW/4	80.00	25.00000%
Totals:			320.00	100.00000%

TYPE OF LAND	COMMITTED ACRES	NON-COMMITTED ACRES	PERCENT
FEDERAL	320.00	0.00	100.00000%
STATE	0.00	0.00	0.00000%
PATENTED	0.00	0.00	0.00000%
TOTAL	320.00	0.00	100.00000%