



United States Department of the Interior

BUREAU OF LAND MANAGEMENT
Wyoming State Office Reservoir Management Group
2987 Prospector Drive
Casper, Wyoming 82604-2968



In Reply Refer To:

3186

(3186.1)

Poker Lake Unit

NMNM71016X

AUG 18 2021

XTO Permian Operating, LLC
Attn: C.R. Salinas
Land Dept., Loc. 115 (W4.4A.288)
22777 Springwoods Village Parkway
Spring, TX 77389-1425

Re: Initial Delaware Formation Participating Area "J"
Poker Lake Unit
Eddy County, New Mexico

Gentlemen:

The Initial Delaware Formation Participating Area "J" is hereby approved effective as of April 22, 2013, pursuant to Section 11 of the Poker Lake Unit Agreement, Eddy County, New Mexico. This participating area has been designated NMNM71016AM.

The application establishes an Initial Delaware Formation Participating Area "J" of 360.00 acres and is based upon the completion of unit well 423H, located in the NE $\frac{1}{4}$ SE $\frac{1}{4}$ (SHL) of Section 19, T.25S., R.30E., unit tract No. 56, Lease No. NMLC070341, and in the NE $\frac{1}{4}$ SE $\frac{1}{4}$ (BHL) of Section 29, T.25S., R.30E., unit tract No. 38, Lease No. NMLC064894 with an initial potential of 737 BOPD and 890 MCFPD from the Delaware Formation. The well was completed on April 22, 2013.

Copies of the approved request are being distributed to the appropriate agencies and one copy of Exhibits "A" and "B" is returned herewith. Please advise all interested parties of the approval of the Initial Delaware Formation Participating Area "J" effective as of April 22, 2013.

Any production royalties that are due must be reported and paid within 30 days of the Bureau of Land Management's approval date or the payors will be assessed interest for late payment under the Federal Oil and Gas Royalty Management Act of 1982 (30 CFR 218.54). If you need assistance or clarifications, please contact the Office of Natural Resources Revenue at <http://onrr.gov> or <https://onrr.gov/about/contact.htm>.

If you have any questions, please call the undersigned at (307) 261-7685.

Sincerely,

/S/ J. David Chase

J. David Chase
Chief, Reservoir Management Group

I Enclosure

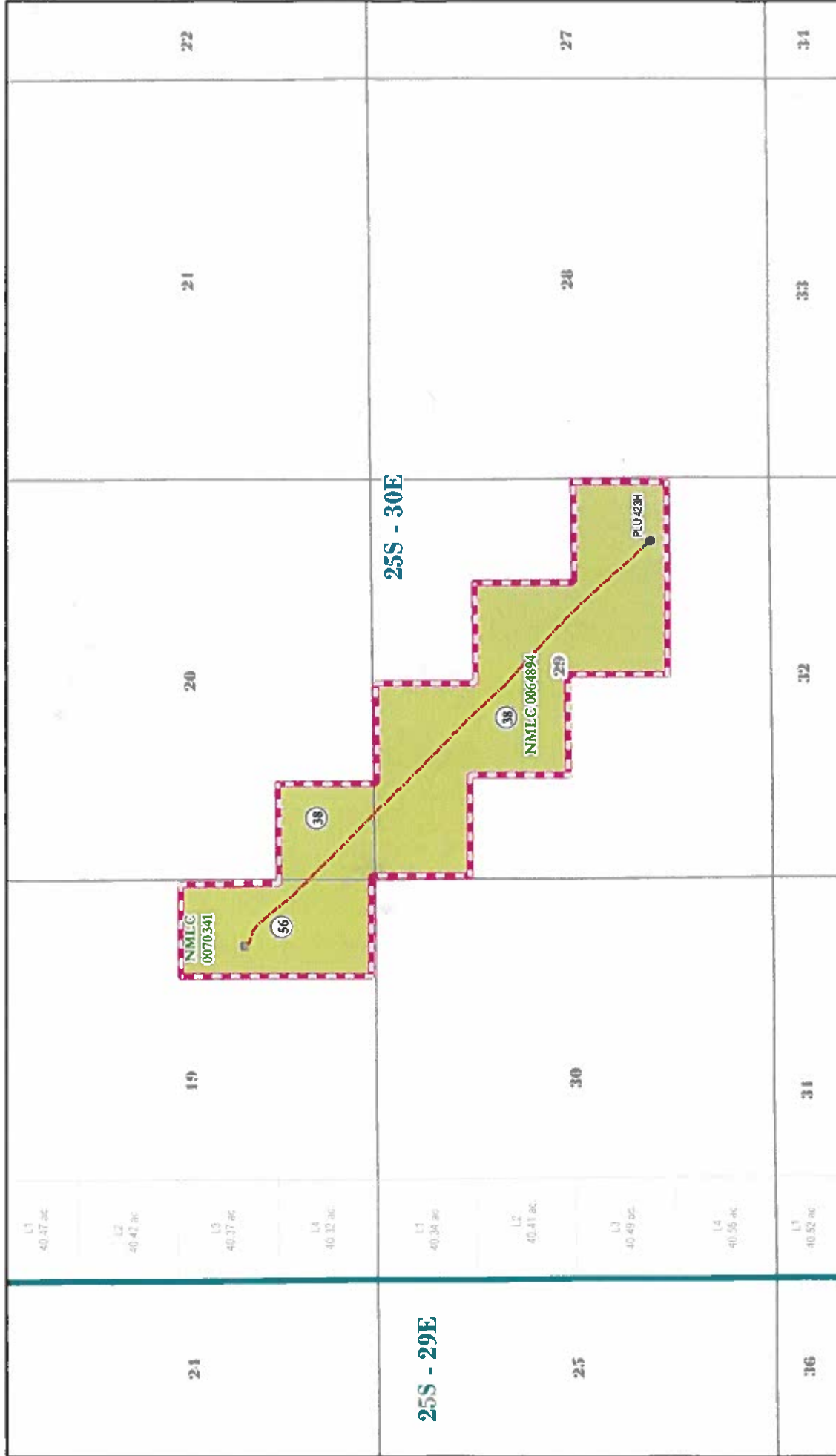
Encl. 1 - Exhibits "A" and "B"

cc: NMSO, Sheila Mallory w/exhibits A & B
ONRR-RRM (email: leases.blm@onrr.gov) w/exhibits A & B
New Mexico State Land Office, Scott Dawson w/exhibits A & B
New Mexico Oil Conservation Division, Leonard Lowe w/exhibits A & B



EXHIBIT "A"
INITIAL DELAWARE FORMATION PARTICIPATING AREA "J"
PLU 423H POKER LAKE UNIT
EDDY COUNTY, NM
EFFECTIVE APRIL 22, 2013

Date: 8/12/2021



RECEIVED

AUG 12 2021

Bureau of Land Management
Reservoir Management Group

RECEIVED

AUG 12 2021

Bureau of Land Management
Reservoir Management Group

EXHIBIT "B"

SCHEDULE OF LANDS AND TRACT PARTICIPATION

INITIAL DELAWARE FORMATION PARTICIPATING AREA "J"

POKER LAKE UNIT

EDDY COUNTY, NEW MEXICO

EFFECTIVE APRIL 22, 2013

Tract No.	Lease No.	Description	Acres	Participation
38	NMLC064894 Federal	Township 25 South - Range 30 East, N.M.P.M. Section 20: SW/4SW/4 Section 29: SW/4NE/4, N/2NW/4, SE/4NW/4, N/2SE/4	280.00	77.7778%
56	NMLC070341 Federal	Township 25 South - Range 30 East, N.M.P.M. Section 19: E/2SE/4	80.00	22.2222%
Totals:			360.00	100.0000%

TYPE OF LAND	COMMITTED ACRES	NON-COMMITTED ACRES	PERCENT
FEDERAL	360.00	0.00	100.0000%
STATE	0.00	0.00	0.0000%
PATENTED	0.00	0.00	0.0000%
TOTAL	360.00	0.00	100.0000%