

Case 11207



P.O. Box 2267, Midland, Texas 79702
Phone: (432) 686-3600 Fax: (432) 686-3773

February 21, 2022

Bureau of Land Management
Carlsbad Field Office
620 E. Greene St.
Carlsbad, New Mexico 88220-6292

State of New Mexico
Oil Conservation Division
1220 South St. Francis Drive
Santa Fe, New Mexico 87504

New Mexico State Land
Oil, Gas & Mineral Division
310 Old Santa Fe Trail
Santa Fe, New Mexico 87504

Re: East Corbin Federal Delaware Unit
Serial No. NMNM 91067X
2022 Plan of Development
Lea County, New Mexico
EOG Resources, Inc. Contract K0080195

Gentlemen:

EOG Resources, Inc. (EOG), as Unit Operator of the East Corbin Federal Delaware Unit (ECDU), hereby submits for your approval, our 2022 Plan of Development.

Items included are as follows: Planned 2022 operations, previous year operations, current status of all wells within the unit, and production graphs for each productive reservoir. Also attached is a current map, showing respectively the unit's: structural and geologic interpretations, participating area boundaries, wells, flow-lines, and roads.

It is understood that approval of this plan does not approve the work covered by the plan. Individual approval is still required for such items as APD's/ROW's/etc.

Any modifications or additions to this Plan of Development will be filed as supplements to the plan.

Sincerely,

A handwritten signature in blue ink, appearing to read "Gary S. Barker", with a long horizontal flourish extending to the right.

Gary S. Barker
Landman

2022 Planned Operations:**Drilling -**

At this time, EOG does not plan any new drill wells in the ECDU.

Completions -

At this time, EOG does not plan any new drill wells in the ECDU.

Plug Back -

At this time, EOG does not plan any plug backs in the ECDU.

Conversion -

At this time, EOG does not plan any conversions in the ECDU.

Abandonment -

None

Other surface disturbing operations -

None

2022 Water Uses:

Volumes (See attached Production Curves)

EOG has no plans for water use for fracing.

No EOG storage ponds.

Previous Year Operations (2021):**Drilling –**

EOG did not drill any new wells in the ECDU in 2021.

Completions –

EOG did not complete any wells in the ECDU in 2021.

Plug Back –

EOG did not plug back any wells in the ECDU in 2021.

Conversion –

EOG did not complete any conversions in the ECDU in 2021.

Abandonment –

None

Other surface disturbing operations –

None

Status of all Wells within the Unit:

WELL NAME & NUMBER	API NUMBER	COMP DATE	ZONE	STATUS
EDCU #1	3002530622	10-07-89	Delaware	P&A 9/6/2019
EDCU #2	3002530499	01-13-89	Delaware	Producing
EDCU #3	3002530949	10-18-90	Delaware	WTW
EDCU #5	3002531253	06-24-91	Delaware	Producing
EDCU #6	3002530736	01-05-90	Delaware	P&A 8/30/2019
EDCU#7	3002530758	01-12-90	Delaware	P&A
EDCU #8	3002530973	09-17-90	Delaware	Producing
EDCU #9	3002532915	07-21-95	Delaware	P&A 8/27/2019

Production Graphs:

See Attachments

Map of structural and geologic interpretations, participating area boundaries, wells, flow-lines, and roads:

See Attachments

EOG Resources, Inc. believes that all current East Corbin Federal Delaware Unit obligations have been satisfied.

In accordance with Section 11 of the East Corbin Federal Delaware Unit Agreement, please signify your approval of the 2022 Plan of Development by executing in the signature block below. Please return one approved copy to EOG Resources, Inc. at the letterhead address.

Should you have any questions or comments in this regard, please contact me at 432-686-3637.

Bureau of Land Management

Date

New Mexico Oil Conservation Division

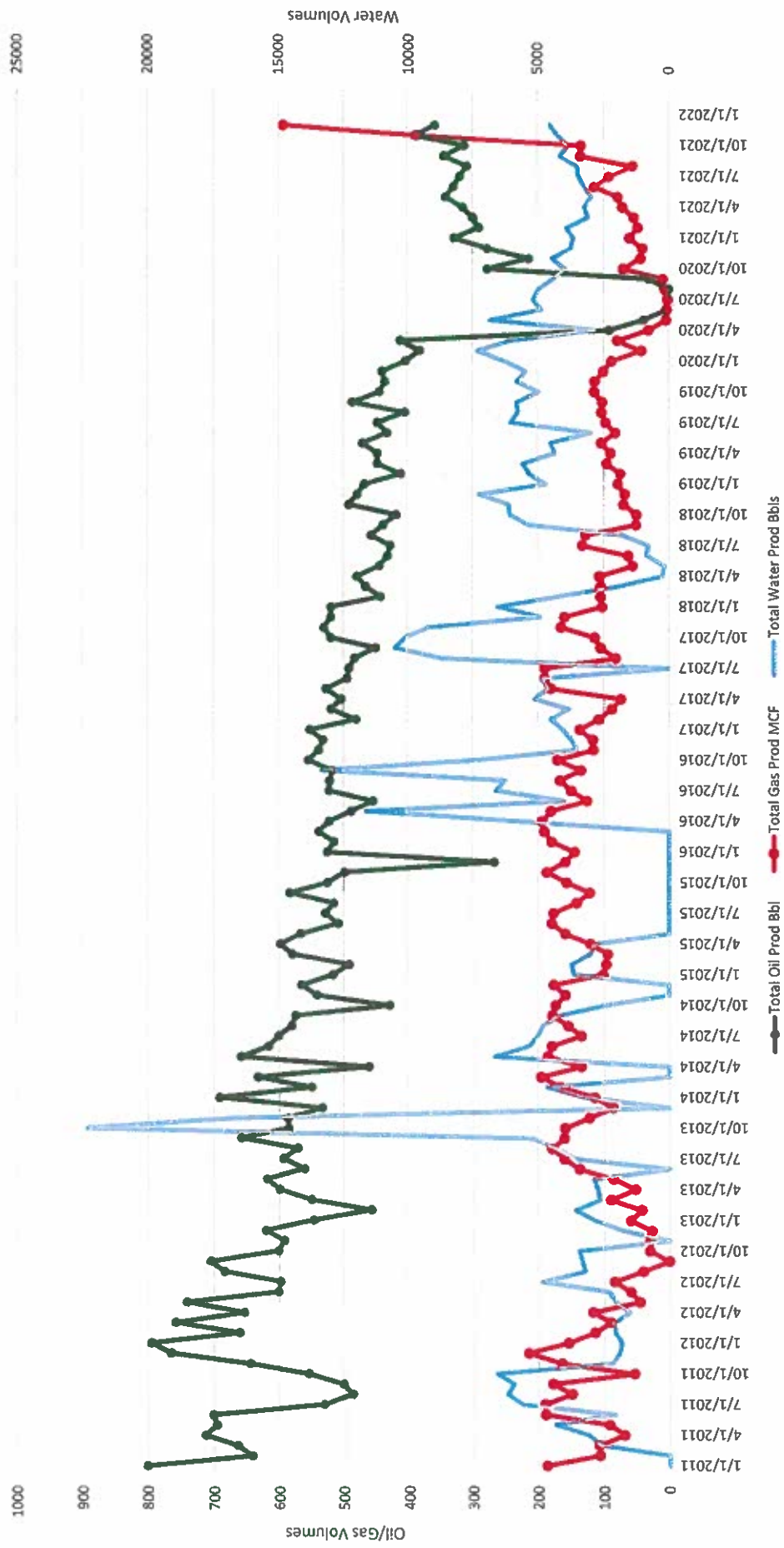
Date

New Mexico State Land

Date

The foregoing approvals are for the 2022 Plan of Development for the East Corbin Federal Delaware Unit, Lea County, New Mexico.

East Corbin Delaware Unit





Legend

☐ Unit & Pooling Agreement

☐ Land Calendar Legend

EXPIRATION

OBLIGATION

PAYMENT

Bing Maps Hybrid

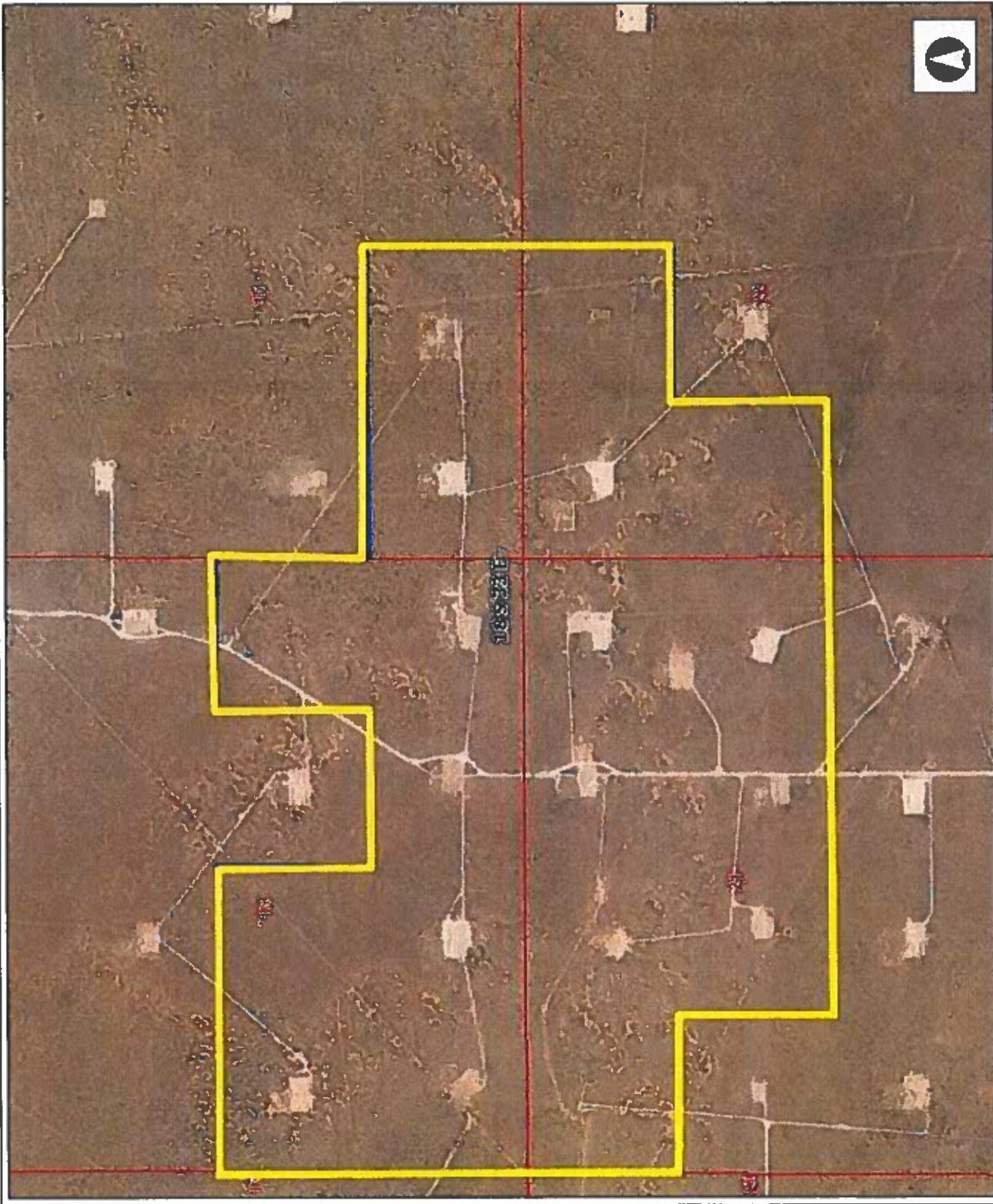
Citations



MIDLAND DIVISION

East Corbin Delaware Unit

Author:



This map is a user generated static output from an Internet mapping site and is for reference only. Data layers that appear on this map may or may not be accurate, current, or otherwise reliable.

THIS MAP IS NOT TO BE USED FOR NAVIGATION

Date: 2/22/2022

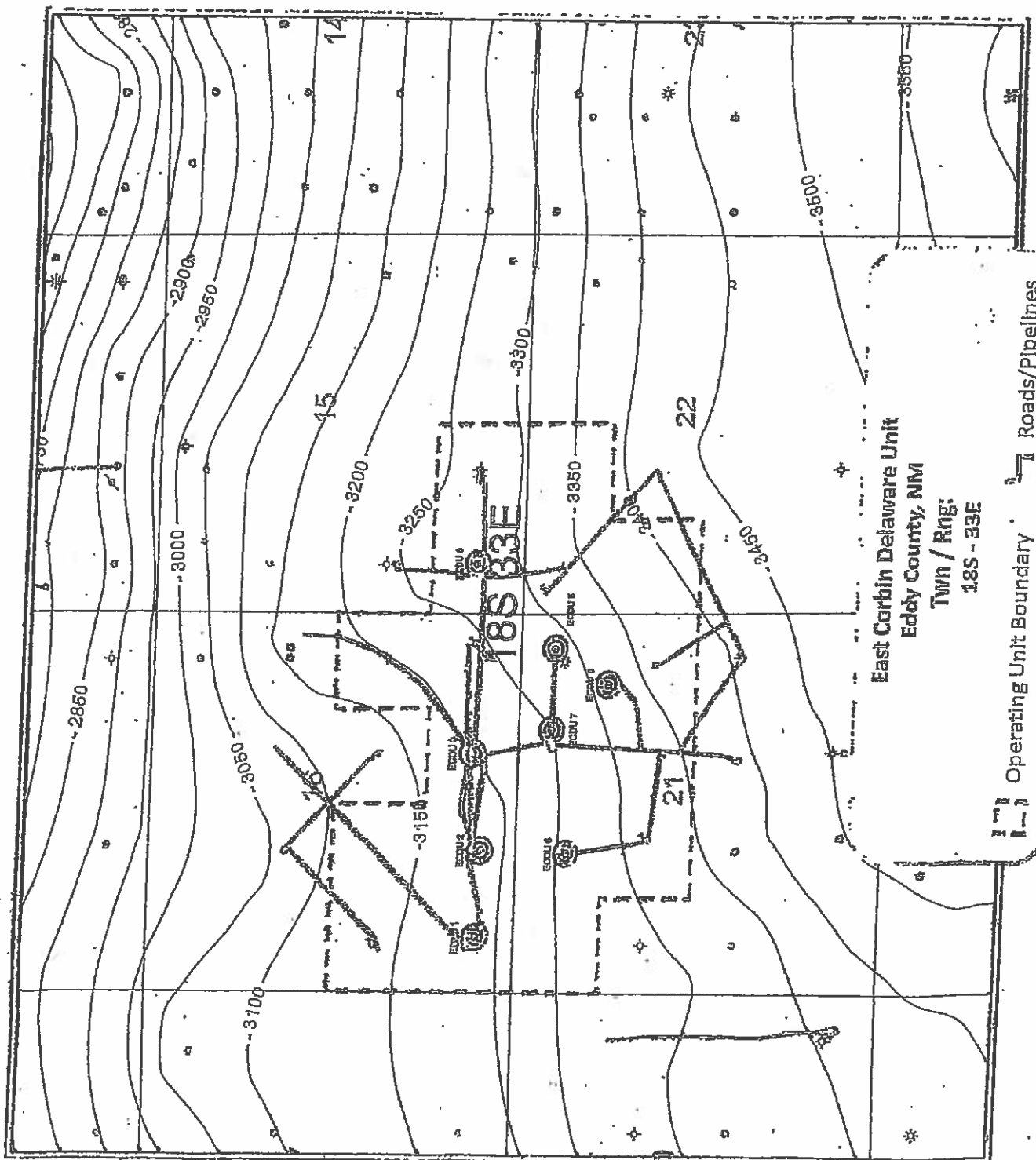
2,901.2 0 1,450.60 2,901.2 Feet

1: 17,407

Projection: WGS_1984_Web_Mercator_Auxiliary_Sphere

East Corbin
Delaware Unit
Lea County, NM
Twn / Rng:
18S-33E

Structure on
Top of Bone Spring Lime
Contour Interval 50 feet
Operating Unit
Boundary



East Corbin Delaware Unit
Eddy County, NM
Twn / Rng:
18S - 33E

Operating Unit Boundary Roads/Pipelines