



United States Department of the Interior

BUREAU OF LAND MANAGEMENT
Wyoming State Office Reservoir Management Group
2987 Prospector Drive
Casper, Wyoming 82604-2968



Case 15844

In Reply Refer To:
3186
(3186.1)
James Ranch Unit
NMNM70965X

JAN 31 2022

XTO Permian Operating, LLC
Attn: Christopher Spencer
Land Dept., Loc. 115
22777 Springwoods Village Parkway
Spring, TX 77389-1425

Re: Initial Wolfcamp Formation Participating Area "A"
James Ranch Unit
Eddy County, New Mexico

Gentlemen:

On August 23, 2019, we approved the Initial Wolfcamp Formation Participating Area "A" with an effective date of November 27, 2017. The Initial Wolfcamp Formation Participating Area "A" was approved for the James Ranch Unit No. 146H well with its completion date of November 27, 2017.

It was recently discovered that the James Ranch Unit No. 195H well was completed in the Wolfcamp Formation on July 17, 2014, which should have been the basis for establishing an Initial Wolfcamp Formation Participating Area "A". Consequently, the approval of the Initial Wolfcamp Formation Participating Area "A" with an effective date of November 27, 2017, is rescinded.

The Initial Wolfcamp Formation Participating Area "A" is hereby approved effective as of July 17, 2014, pursuant to Section 11 of the James Ranch Unit Agreement, Eddy County, New Mexico. This participating area has been designated NMNM70965L.

The application establishes an Initial Wolfcamp Formation Participating Area "A" of 240.00 acres and is based upon the completion of unit well 195H, located in the SE $\frac{1}{4}$ SE $\frac{1}{4}$ (SHL) of Section 36, T.22S., R.30E., unit tract No. 21A, state lease, and in the SW $\frac{1}{4}$ SE $\frac{1}{4}$ (BHL) of Section 35, T.22S., R.30E., unit tract No. 6A, Lease No. NMNM02952A, with an initial potential of 314 BOPD and 781 MCFPD from the Wolfcamp Formation. The well was completed on July 17, 2014.

Copies of the approved request are being distributed to the appropriate agencies and one copy of Exhibits "A" and "B" is returned herewith. Please advise all interested parties of the approval of the

Initial Wolfcamp Formation Participating Area "A" effective as of July 17, 2014.

Any production royalties that are due must be reported and paid within 30 days of the Bureau of Land Management's approval date or the payors will be assessed interest for late payment under the Federal Oil and Gas Royalty Management Act of 1982 (30 CFR 218.54). If you need assistance or clarifications, please contact the Office of Natural Resources Revenue at <http://onrr.gov> or <https://onrr.gov/about/contact.htm>.

If you have any questions, please call the undersigned at (307) 261-7685.

Sincerely,

/S/ J. David Chase

J. David Chase
Chief, Reservoir Management Group

1 Enclosure

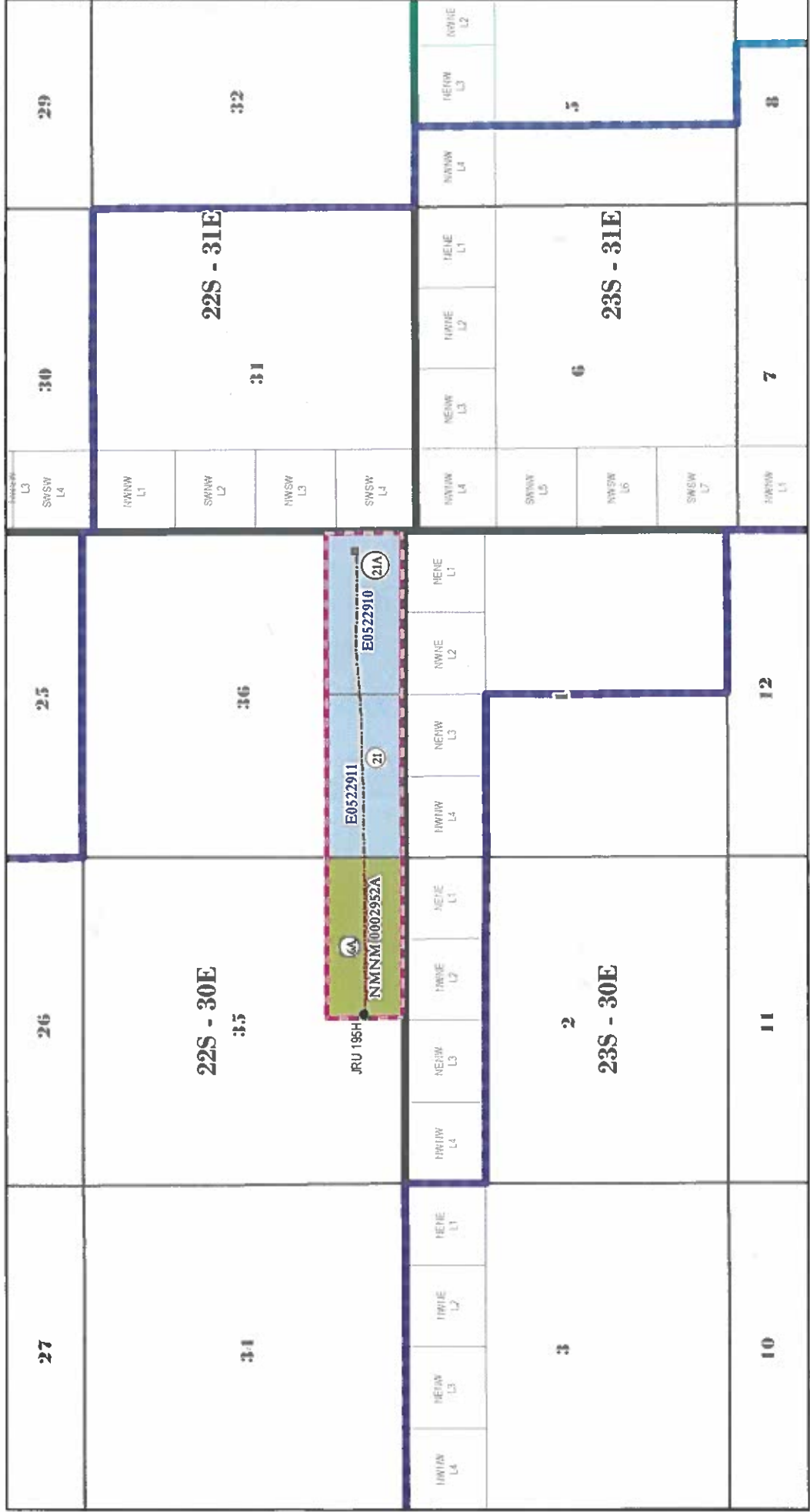
Encl. 1 - Exhibits "A" and "B"

cc: NMSO, Sheila Mallory w/exhibits A & B
ONRR-RRM (email: leases.blm@onrr.gov) w/exhibits A & B
New Mexico State Land Office, Scott Dawson w/exhibits A & B
New Mexico Oil Conservation Division, Leonard Lowe w/exhibits A & B

EXHIBIT "A"
INITIAL WOLFCAMP FORMATION PARTICIPATING AREA "A"
195H JAMES RANCH UNIT
EDDY COUNTY, NM
EFFECTIVE JULY 17, 2014



Date: 1/26/2022
 Land GIS Dept. \\F:\W\Nelson\Projects\Various\Proposals\195H JAMES RANCH UNIT\PA A\Initial



- JAMES RANCH UNIT OUTLINE
- CAPABLE WELL (BHL)
- CAPABLE WELL (SHL)
- CAPABLE WELLBORE
- PROPOSED WOLFCAMP PA "A"
- STATE ACREAGE WITHIN PA
- FEDERAL ACREAGE WITHIN PA



RECEIVED

JAN 14 2022

Bureau of Land Management
 Reservoir Management Group

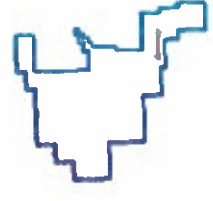


EXHIBIT "B"

SCHEDULE OF LANDS AND TRACT PARTICIPATION

INITIAL WOLFCAMP FORMATION PARTICIPATING AREA "A"

JAMES RANCH UNIT

EDDY COUNTY, NEW MEXICO

EFFECTIVE: JULY 17, 2014

Tract No.	Lease No.	Description	Acres	Participation
<u>FEDERAL LANDS</u>				
6A	NMNM02952A	T22S-R30E, N.M.P.M. Section 35: S/2SE/4	80.00	33.3334%
<u>STATE LANDS</u>				
21	E-5229-011	T22S-R30E, N.M.P.M. Sec. 36: S/2SW/4	80.00	33.3333%
21A	E-5229-010	T22S-R30E, N.M.P.M. Sec. 36: S/2SE/4	80.00	33.3333%
Total			240.00	100.0000%
<u>TYPE OF LAND</u>				
FEDERAL		COMMITTED ACRES	NON-COMMITTED ACRES	PERCENT
STATE		80.00	0.00	33.3333%
PATENTED		160.00	0.00	66.6667%
		0.00	0.00	0.0000%
TOTAL		240.00	0.00	100.0000%

RECEIVED

JAN 14 2022

Bureau of Land Management
Reservoir Management Group