

*Corrected*

Corrected advertisement for the October 4, 2012 Examiner's docket

**CASE** 14906. Burlington Resources Oil & Gas Company LP ("Burlington"), pursuant to NMSA 1978, Section 70-2-17.C, seeks an order pooling all mineral interests from the top of the Mesaverde to the base Dakota formation underlying the W/2 of Section 14, T29N, R8W, NMPM, San Juan County, New Mexico, forming a standard 320-acre gas spacing and proration units for the Mesaverde, Mancos and Dakota formations spaced on 320-acre spacing. In addition, Burlington, pursuant to NMSA 1978, Sec 70-2-17.E, requests that the Division invoke the Division's authority to modify the terms of an existing Joint Operating Agreement, dated September 10, 1951 to the extent necessary to comply with the current well spacing and density rules for the Blanco-Mesaverde Gas Pool. Order R-10987-A(1), effective December 2, 2002; for the Basin-Dakota Gas Pool. Order R-10981-B(1), effective January 29, 2002; and for the Basin-Mancos Gas Pool. Order R-12984 effective September 3, 2008. These units are to be dedicated to its (a) Lively 4N Well (API # 30-045-35193) to be drilled and completed at a standard surface well in Unit D with a bottom hole location in Unit E and downhole commingled wellbore for production from Dakota, Mancos and Mesaverde formations and (b) Lively 4M Well (API # 30-045-35380) to be drilled and completed at a standard surface well in Unit O with a bottom hole location in Unit N and downhole commingled wellbore for production from Dakota, Mancos and Mesaverde formations. Also to be considered will be the costs of drilling and completing said wells and the allocation of the costs thereof as well as actual operating costs and charges for supervision, designation of applicant as the operator of the wells and, pursuant to Commission Order R-11992, a charge 200% charge for the risk involved in these wells. This unit is located approximately 4 miles southwest of the Navajo City, New Mexico.

# KELLAHIN & KELLAHIN

ATTORNEY AT LAW

RECEIVED OCD

W. Thomas Kellahin  
706 Gonzales Road  
Santa Fe, New Mexico 87501

2012 AUG 23  
phone 505.982.4285  
Facsimile 505.216.2780  
[tkellahin@comcast.net](mailto:tkellahin@comcast.net)

August 23, 2012

VIA ELECTRONIC FILING

Case 14906

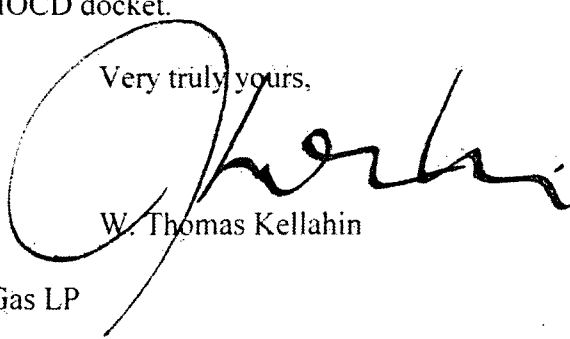
Ms. Jami Bailey, Director  
Oil Conservation Division  
1220 South Saint Francis Drive  
Santa Fe, New Mexico 87505

Re: Lively <sup>4N</sup>~~3M~~ Well & Lively 4M Well  
Dedications: W/2 of Section 14, T29N, R8W  
(APD #30-045-35193) & (APD # 30-045-35380)  
Application of Burlington Resources Oil & Gas Company LP  
for Compulsory Pooling.  
San Juan County, New Mexico

Dear Ms. Bailey,

On behalf of Burlington Resources Oil & Gas Company LP ("Burlington"), please find enclosed our referenced application which we request be set for hearing on the Examiner's docket now scheduled for October 4, 2012. Also enclosed is our proposed advertisement of this case for the NMOCD docket.

Very truly yours,

  
W. Thomas Kellahin

cc: Burlington Resources Oil & Gas LP  
Attn: Terry B. Simcoe

CASE 14906 Burlington Resources Oil & Gas Company LP ("Burlington"), pursuant to NMSA 1978, Section 70-2-17.C, seeks an order pooling all mineral interests from the top of the Mesaverde to the base Dakota formation underlying the W/2 of Section 14, T29N, R8W, NMPM, San Juan County, New Mexico, forming a standard 320-acre gas spacing and proration units for the Mesaverde and Dakota formation spaced on 320-acre spacing. In addition, Burlington, pursuant to NMSA 1978, Sec 70-2-17.E, requests that the Division invoke the Division's authority to modify the terms of an existing Joint Operating Agreement, dated October 7, 1977 to the extent necessary to comply with the current well spacing and density rules for the Blanco-Mesaverde Gas Pool. Order R-10987-A(1), effective December 2, 2002; for the Basin-Dakota Gas Pool. Order R-10981-B(1), effective January 29, 2002; and for the Basin-Mancos Gas Pool. Order R-12984 effective September 3, 2008. These units are to be dedicated to its (a) Lively 4N Well (API # 30-045-35193) to be drilled and completed at a standard surface well in Unit D with a bottom hole location in Unit E and downhole commingled wellbore for production from Dakota, Mancos and Mesaverde formations and (b) Lively 4M Well (API # 30-045-35380) to be drilled and completed at a standard surface well in Unit O with a bottom hole location in Unit N and downhole commingled wellbore for production from Dakota, Mancos and Mesaverde formations. Also to be considered will be the costs of drilling and completing said wells and the allocation of the costs thereof as well as actual operating costs and charges for supervision, designation of applicant as the operator of the wells and, pursuant to Commission Order R-11992, a charge 200% charge for the risk involved in these wells. This unit is located approximately 4 miles southwest of the Navajo City, New Mexico.

**STATE OF NEW MEXICO  
ENERGY, MINERALS AND NATURAL RESOURCES DEPARTMENT  
OIL CONSERVATION DIVISION**

**IN THE MATTER OF THE APPLICATION OF  
BURLINGTON RESOURCES OIL & GAS COMPANY LP  
FOR COMPULSORY POOLING  
(Lively 4N and Lively 4M)  
SAN JUAN COUNTY, NEW MEXICO.**

CASE NO. 14906

**APPLICATION**

Burlington Resources Oil & Gas Company LP ("Burlington"), a wholly owned subsidiary of ConocoPhillips Company, by its attorneys, Kellahin & Kellahin, pursuant to NMSA 1978, Section 70-2-17.C, seeks an order pooling all mineral interests from the top of the Mesaverde formation to the base of the Dakota formation underlying the W/2 of Section 14, T29N, R8W, NMPM, San Juan County, New Mexico, forming a standard 320-acre gas spacing and proration unit for the Mesaverde, Mancos and Dakota formations spaced on 320-acre spacing. This unit is to be dedicated to its (i) Lively 4N Well (API # 30-045-35193) to be drilled and completed at a standard surface well in Unit D with a bottom hole location in Unit E and downhole commingled wellbore for production from Dakota, Mancos and Mesaverde formations and (ii) Lively 4M Well (API # 30-045-35380) to be drilled and completed at a standard well location in Unit O with a bottom hole location in Unit N as a downhole commingled wellbore for production from Dakota, Mancos and Mesaverde formations.

In addition, Burlington requests that the Division invoke the Division's authority to modify the terms of an existing Joint Operating Agreement dated September 10, 1951, pursuant to NMSA 1978, Sec 70-2-17.E, to the extent necessary to comply with the current well spacing and density rules for the Blanco-Mesaverde Gas Pool. Order R-10987-A(1), effective December 2, 2002, for the Basin-Dakota Gas Pool. Order R-10981-B(1), effective January 29, 2002 and for the Basin-Dakota Gas Pool. Order R-10981-B(1), effective January 29, 2002. Also to be considered will be the costs of drilling and completing said wells and the allocation of the costs thereof as well as actual operating costs and charges for supervision, designation of applicant as the operator of the wells and, pursuant to Commission Order R-11992, a charge of 200% for the risk involved in these wells.

In support of its application Burlington states:

### **BACKGROUND**

1. There is no Joint Operating Agreement covering the Mesaverde and Mancos formations for this 320-acre spacing unit.
2. There is a vintage gas operating agreement for the Dakota formation dated September 10, 1951 between San Juan Production Company, predecessor in title to both Burlington Resources Oil & Gas Company LP and Lively Exploration Company, and Largo Natural Gas Company, predecessor in title to ConocoPhillips Company.
3. Lively Exploration Company, as subsequently designated operator, drilled and produced the Dakota formation from the Lively No. 004 Well (API # 30-045-21075) in Unit D. The current status of this wellbore is active.
4. Burlington proposed that the parties enter into a new operating agreement for the Lively 4M and Lively 4N. A new operating agreement is necessary because the existing operating agreement fails to address production from formations other than the Dakota or authorize commingling of production. Additionally, the 1951 operating agreement does not have a gas balancing agreement or provisions for "Subsequent Operations" including infill drilling.
5. Burlington proposed a new AAPL Form 610-1982 operating agreement which contained an accounting procedure and a gas balancing agreement, and was accompanied by a drilling proposal that contained the location for each well, both surface and bottom hole, depth to be drilled, and a complete cost estimate.
6. The Blanco-Mesaverde Gas Pool is currently governed by the "Special Rules and Regulations for the Blanco-Mesaverde Pool" set forth in Order R-10987-A effective February 1, 1999, in which the Commission again modified the well spacing program in the Mesaverde formation to authorize up to four wells within a standard 320-acre spacing unit.
7. The Basin-Dakota Gas Pool is currently governed by the "Special Rules and Regulations for the Basin-Dakota Pool" set forth in Order R-10981-B effective January 29, 2002, in which the Commission again modified the well spacing program in the Dakota formation to authorize up to four wells within a standard 320-acre spacing unit.

8. By letter dated July 10, 2012, Burlington, as the successor in interest to the original operator, circulated a Joint Operating Agreement, A.A.P.L. Form 610-1982 Model Form, dated July 10, 2012, to replace the 1951-JOA to now cover from the top of the Mesaverde formation to the base of the Dakota formation and allow for additional Dakota wells.
9. This 2012 JOA provides for the drilling of additional Dakota and Mesaverde wellbores consistent with the current well spacing and density orders for these formations and also provides other contemporary provisions including those for cost allocation procedures, payment default provisions and future proposed operations.
10. By letter dated July 10, 2012, Burlington sent a written well proposal including AFE to Lively Exploration Company that included the Mesaverde and Dakota, formations underlying the W/2 of Section 14, T29N, R8W, NMPM, San Juan County, New Mexico, forming a standard 320-acre gas spacing and proration unit for the Mesaverde and Dakota formations spaced on 320-acre spacing. This unit is to be dedicated to its:
  - a. (i) Lively 4N Well (API # 30-045-35193) to be drilled and completed at a standard well location in Unit D with a bottom hole location in Unit E and downhole commingled wellbore for production from Dakota and Mesaverde formations [See form C-102 attached as Exhibit "A"] and,
  - b. (ii) Lively 4M Well (API # 30-045-35380) to be drilled and completed at a standard well location in Unit O with a bottom hole location in Unit N as a downhole commingled wellbore for production from Dakota and Mesaverde formations. [See form C-102 attached as Exhibit "B"]
11. As of August 10, 2012, Lively Exploration Company had failed to voluntarily join in this new 2012 JOA.

### **REQUESTED RELIEF**

12. Burlington contends that the Division has the authority pursuant to the New Mexico Oil & Gas Act, specifically NMSA (1978) section 70-2-17-C and 70-2-17.E to issue a compulsory pooling for the Top of the Mesaverde to the Base of the Dakota and to modify the original 1951 JOA so that these new wells can be drilled because:
  - a. The 1951-JOA is limited such that no Dakota infill wells can be drilled and does not provide for the drilling of any Mesaverde wells or the commingling of that production with the Dakota.

- b. These new wells are necessary in order to recover Mesaverde and Dakota Gas reserves, which will not otherwise be recovered.
  - c. Waste will occur in the event the Division fails to modify the 1951 JOA because of the lack of Dakota and Mesaverde infill drilling provisions, subsequent operations, commingling of production and the lack of cost allocations provisions that currently preclude Burlington from drilling these wellbores.
  - d. The provisions of Section 70-2-17.E apply and the Division should modify the 1951 JOA to the extent necessary to prevent waste in accordance with these statutory provisions of the New Mexico Oil & Gas Act.
13. Burlington contends that compulsory pooling of the gas formations from the top of the Mesaverde to the base of the Dakota is necessary.

#### **PARTY TO BE POOLED**

14. Burlington controls 100% from the top of the Mesaverde to the top of the Dakota and has -0-% working interest in the Dakota; ConocoPhillips has -0-% working interest from the top of the Mesaverde to the base of the Mancos and controls 12.5% of the Dakota working interest; and Lively Exploration Company has -0-% interest from the surface to the base of the Mancos and a 87.5% working interest in the Dakota formation.
15. The subject 320-acre spacing units are located within the Blanco-Mesaverde Gas Pool, Basin-Mancos Gas Pool and the Basin-Dakota Gas Pool.
16. Burlington, despite reasonable effort, has been unable to obtain the voluntary agreement of Lively Exploration Company in this spacing unit. Pursuant to Section 70-2-17.C NMSA (1978), and in order to obtain its just and equitable share of potential production underlying this spacing unit, Burlington needs an order of the Division pooling the identified and described mineral interests involved in order to protect correlative rights and prevent waste.

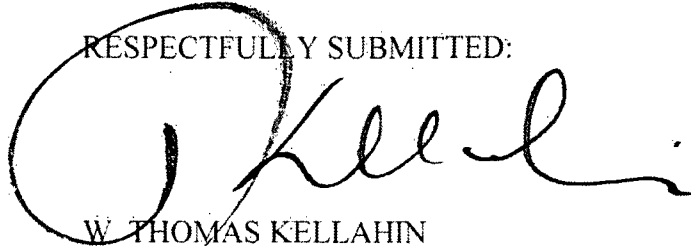
#### **NOTICE**

17. In accordance with the Division's notice requirements, a copy of this application has been sent to the Lively Exploration Company, the party whose interests are to be pooled, notifying it of this case and of the applicant's request for a hearing of this matter before the Division on the next available Examiner's docket now scheduled for October 4, 2012.

WHEREFORE, Burlington, as applicant, requests that this application be set for hearing on October 4, 2012 before the Division's duly appointed examiner, and that after notice and hearing as required by law, the Division enter its order pooling the mineral interest described in the appropriate spacing unit for these wells at a standard well location upon terms and conditions which include:

1. Burlington Resources Oil & Gas Company LP be named operator;
2. Modification of the 1951 Joint Operating Agreement;
3. Provisions for applicant and all working interest owners to participate in the costs of drilling, completing, equipping and operating these wells;
4. In the event a mineral interest or working interest owner fails to elect to participate, then provision be made to recover out of production, the costs of the drilling, completing, equipping and operating the well, plus a risk factor penalty of 200%;
5. Provision for overhead rates per month drilling and per month operating and a provision providing for an adjustment method of the overhead rates as provided by COPAS;
6. Provisions for subsequent operations
7. For such other and further relief as may be proper.

RESPECTFULLY SUBMITTED:



W. THOMAS KELLAHIN  
KELLAHIN & KELLAHIN  
706 Gonzales Road  
Santa Fe, New Mexico 87501  
Ph 505-982-4285  
Fx 505-216-2780  
Email tkellahin@comcast.net



DISTRICT I  
1625 N. French Dr., Hobbs, N.M. 88240

State of New Mexico  
Energy, Minerals & Natural Resources Department

Form C-102  
Revised October 12, 2005

DISTRICT II  
1901 W. Grand Avenue, Artesia, N.M. 85210

Submit to Appropriate District Office  
State Lease - 4 Copies  
Fee Lease - 3 Copies

DISTRICT III  
1000 Rio Brazos Ed., Aztec, N.M. 87410

OIL CONSERVATION DIVISION  
1220 South St. Francis Dr.  
Santa Fe, NM 87505

DISTRICT IV  
1220 S. St. Francis Dr., Santa Fe, NM 87505

☐ AMENDED REPORT

WELL LOCATION AND ACREAGE DEDICATION PLAT

*API Number		*Pool Code	*Pool Name BLANCO MESAVERDE / BASIN DAKOTA
*Property Code	*Property Name LIVELY		*Well Number 4N
*GRID No.	*Operator Name BURLINGTON RESOURCES OIL & GAS COMPANY LP		*Elevation 6347'

<sup>10</sup> Surface Location

UL or lot no.	Section	Township	Range	Lot Idn	Feet from the	North/South line	Feet from the	East/West line	County
D	14	29N	8W		845'	NORTH	1129'	WEST	SAN JUAN

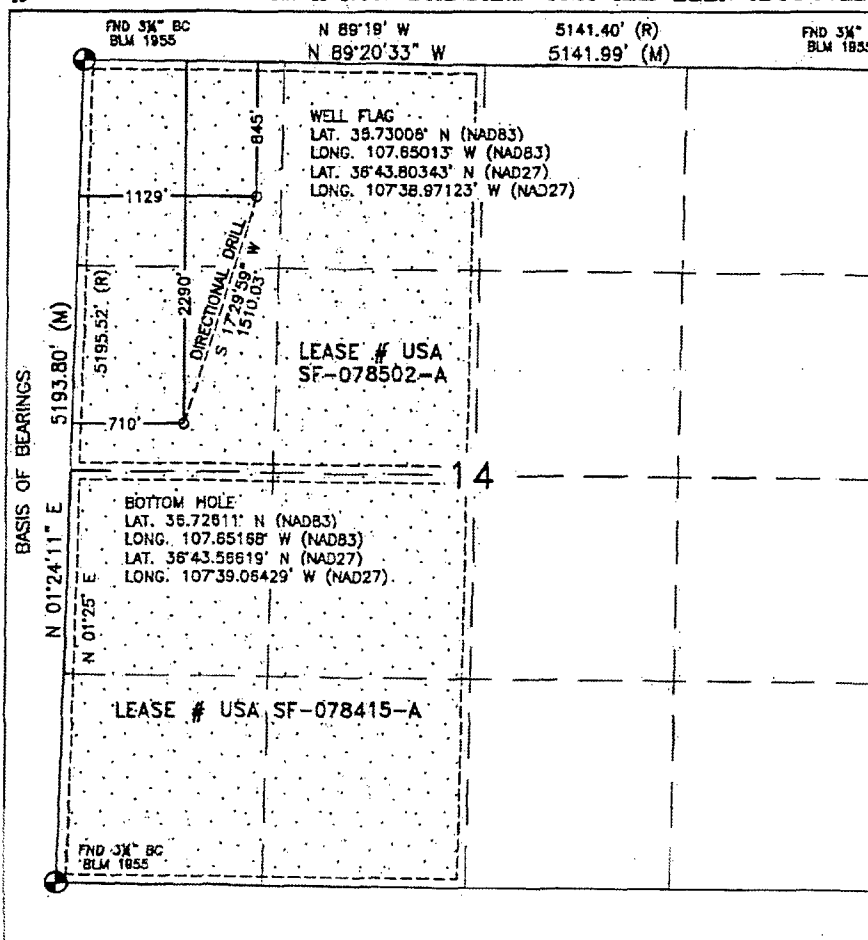
<sup>11</sup> Bottom Hole Location If Different From Surface

UL or lot no.	Section	Township	Range	Lot Idn	Feet from the	North/South line	Feet from the	East/West line	County
E	14	29N	8W		2290'	NORTH	710'	WEST	SAN JUAN

<sup>12</sup> Dedicated Acres 320.00 ACRES - W/2	<sup>13</sup> Joint or Infill	<sup>14</sup> Consolidation Code	<sup>15</sup> Order No.
---	-------------------------------	----------------------------------	-------------------------

NO ALLOWABLE WILL BE ASSIGNED TO THIS COMPLETION UNTIL ALL INTERESTS HAVE BEEN CONSOLIDATED  
OR A NON-STANDARD UNIT HAS BEEN APPROVED BY THE DIVISION

16



<sup>17</sup> OPERATOR CERTIFICATION

I hereby certify that the information contained herein is true and complete to the best of my knowledge and belief, and that this organization either owns a working interest or unleased mineral interest in the land including the proposed bottom hole location or has a right to drill this well at this location pursuant to a contract with an owner or a completion heretofore entered by the division.

Signature

Printed Name

<sup>18</sup> SURVEYOR CERTIFICATION

I hereby certify that the well location shown on this plat was plotted from field notes of actual surveys made by me or under my supervision, and that the same is true and correct to the best of my belief.

APRIL 27, 2010

Date of Survey

Signature and Seal of Professional Surveyor:



DAVID RUSSELL

Certificate Number

10201

DISTRICT I  
1625 N. French Dr., Hobbs, N.M. 88240

State of New Mexico  
Energy, Minerals & Natural Resources Department

Form C-102  
Revised July 16, 2010

DISTRICT II  
1301 W. Grand Avenue, Artesia, N.M. 88210

Submit one copy to appropriate  
District Office

DISTRICT III  
1000 Rio Brazos Rd., Aztec, N.M. 87410

OIL CONSERVATION DIVISION

1220 South St. Francis Dr.  
Santa Fe, NM 87505

DISTRICT IV  
1220 S. St. Francis Dr., Santa Fe, NM 87505

☐ AMENDED REPORT

WELL LOCATION AND ACREAGE DEDICATION PLAT

1 API Number		2 Pool Code		3 Pool Name BLANCO MESAVERDE / BASIN DAKOTA		
4 Property Code		5 Property Name LIVELY			6 Well Number 4M	
7 OGRD No.		8 Operator Name BURLINGTON RESOURCES OIL & GAS COMPANY LP			9 Elevation 6937'	

10 Surface Location

UL or lot no.	Section	Township	Range	Lot Idn	Feet from the	North/South line	Feet from the	East/West line	County
O	14	29N	8W		1215'	SOUTH	2039'	EAST	SAN JUAN

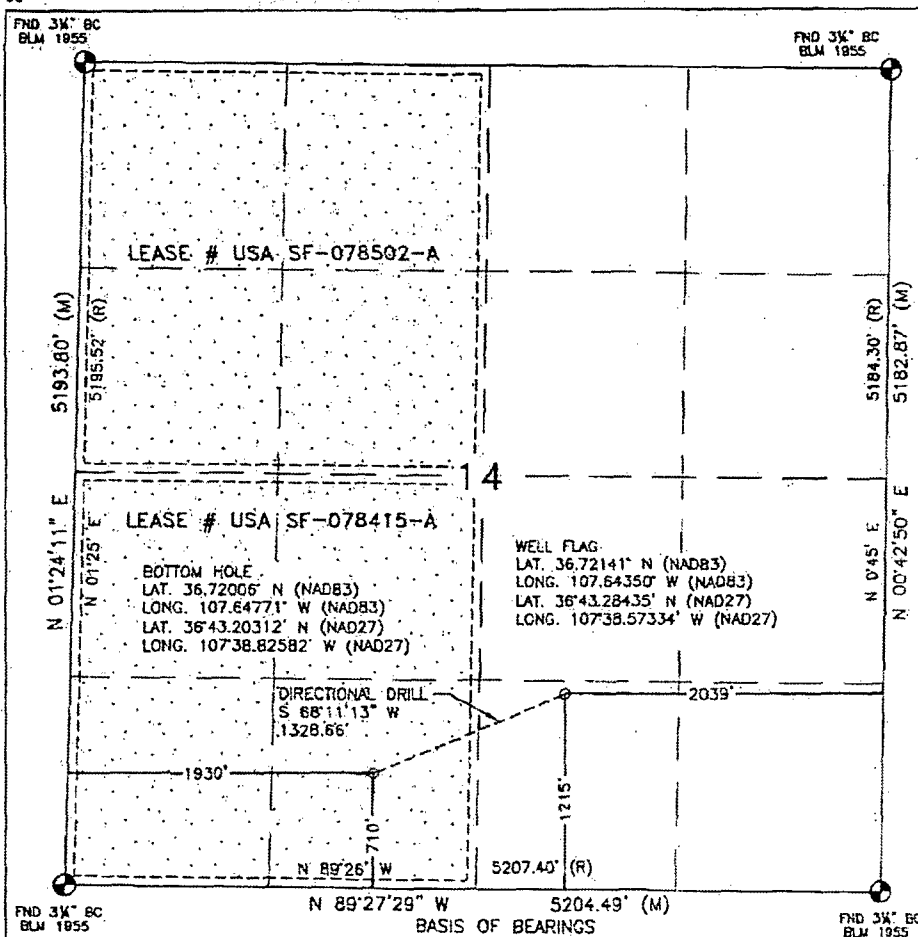
11 Bottom Hole Location If Different From Surface

UL or lot no.	Section	Township	Range	Lot Idn	Feet from the	North/South line	Feet from the	East/West line	County
N	14	29N	8W		710'	SOUTH	1930'	WEST	SAN JUAN

12 Dedicated Acres 320.00 ACRES - W/2		13 Joint or Infill		14 Consolidation Code		15 Order No.	
--	--	--------------------	--	-----------------------	--	--------------	--

NO ALLOWABLE WILL BE ASSIGNED TO THIS COMPLETION UNTIL ALL INTERESTS HAVE BEEN CONSOLIDATED  
OR A NON-STANDARD UNIT HAS BEEN APPROVED BY THE DIVISION

16



17 OPERATOR CERTIFICATION

I hereby certify that the information contained herein is true and complete to the best of my knowledge and belief, and that this organization either owns a working interest or unleased mineral interest in the land including the proposed bottom hole location or has a right to drill this well at this location pursuant to a contract with an owner of such a mineral or working interest, or is a voluntary pooling agreement or a compulsory pooling order heretofore entered by the division.

Signature

Printed Name

E-mail Address

18 SURVEYOR CERTIFICATION

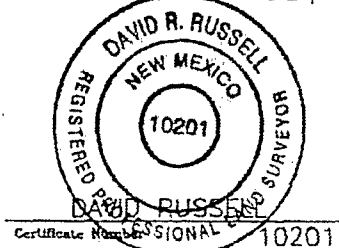
I hereby certify that the well location shown on this plat was plotted from field notes of actual surveys made by me or under my supervision, and that the same is true and correct to the best of my belief.

NOVEMBER 2, 2010

Date of Survey

Signature and Seal of Professional Surveyor:

*David R. Russell*



Certificate Number 10201

