

Marbob Energy Corporation
Stratigraphic Correlation Section
Saber SWD, Dodd B Dp 2,
Dodd A21 & Barnsdall 7
Eddy County, NM

BEFORE THE OIL CONSERVATION COMMISSION
Santa Fe, New Mexico
Case Nos. 13349 & 13350 Exhibit No. 16
Submitted by:
Marbob Energy Corporation
Hearing Date: October 7, 2004

N

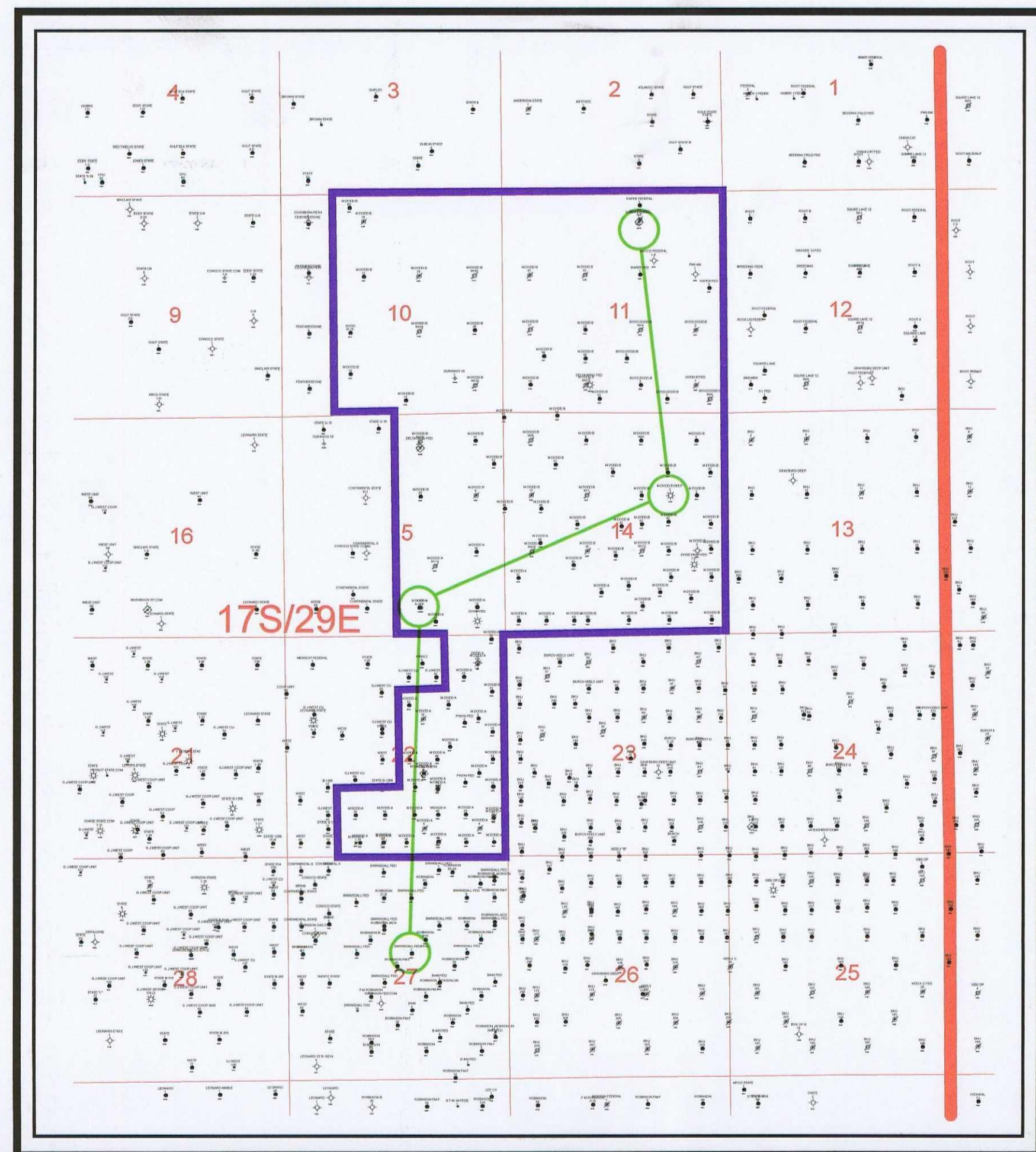
Marbob Energy
Saber Fed #1 SWD
Sec. 11-T17S-R29E

Marbob Energy
M Dodd B Deep 2
Sec. 14-T17S-R29E

Marbob Energy
M Dodd A #21
Sec. 15-T17S-R29E

Marbob Energy
Barnsdall 7
Sec. 27-T17S-R29E

S



Rustler
Datum

Yates

7 Rivers

Bowers

Queen

Grayburg

San Andres

Lovington

Keely Marker

Glorieta

Yeso/Paddock

5000'

Proposed Base
Unitized Rights

"Grayburg" Pay

"Jackson" Pay

"Keely" Pay

"Yeso/Paddock"
Pay