

PERRY R. BASS  
12<sup>TH</sup> FLOOR FT. WORTH NATL BANK BLDG.  
FORT WORTH, TEXAS

MAIN OFFICE 900

March 9, 1966

APR 25 AM - 00

United States Geological Survey  
Commissioner of Public Lands  
New Mexico Oil Conservation Commission

Re: Plan of Development - January 1,  
1966 to January 1, 1967 - Poker Lake  
Unit Area No. 14-08-001-303 -  
Eddy County, New Mexico

Gentlemen:

In compliance with Section 10 of the Poker Lake Unit Agreement, dated July 16, 1952, Perry R. Bass, as Unit Operator, hereby submits for your approval Plan of Development covering the period from January 1, 1966 to January 1, 1967.

History of Past Development

A review of the past development on the Poker Lake Unit reflects that we have drilled, or caused to be drilled, 32 shallow wells and three deep wells. We are attaching hereto a map, marked Exhibit "A", which reflects all of the wells drilled within this Unit Area since the Unit was approved. Three of these wells, as we have pointed out previously, are extremely deep wells, all of which were drilled below 13,500 feet. In addition to the three deep wells, the 32 shallow wells have been drilled to various depths in search of Delaware or Lower Delaware production.

Since the last Plan of Development, we have drilled, or caused to be drilled, three shallow wells, the first of which was the Fred Pool No. 1 Herzog, drilled in Section 17, Township 25 South, Range 30 East. This well was spudded March 9, 1964 and drilled to a total depth of 3,781 feet and abandoned as a dry hole September 1, 1964. The next well which was drilled was the Pauley Petroleum Company No. 1 Jennings, located in Section 20, Township 24 South, Range 31 East. This well was spudded April 27, 1965 and completed May 5, 1965. The well was drilled to a total depth of 4,502 feet and was plugged and abandoned. An additional shallow well was drilled by the Choctaw Production Company, No. 1 Sugart - Federal, located in Section 12, Township 25 South, Range 30 East. This well was spudded

United States Geological Survey  
Commissioner of Public Lands  
New Mexico Oil Conservation Commission  
March 9, 1966  
Page 2

September 16, 1965 and drilled to a total depth of 4,201 feet. The well was completed September 27, 1965 and plugged and abandoned as a dry hole.

Development

For the past six months, the Unit Operator, in association with Pan American Petroleum Corporation, has been conducting an extensive seismograph program, reshooting the entire Unit Area, using the new computer technique in an effort to get more accurate results from the data received. This program is continuing, looking toward the early selection of a drill site for the drilling of a deep Devonian test.


Perry R. Bass, as Unit Operator, plans to drill, or cause to be drilled, at least two additional shallow wells and possibly one deep Devonian test in the period from January 1, 1966 to January 1, 1967.

Effective Date

This Plan of Development shall be effective January 1, 1966 and expire January 1, 1967.

Very truly yours,


PERRY R. BASS

By:   
Howard W. Jennings

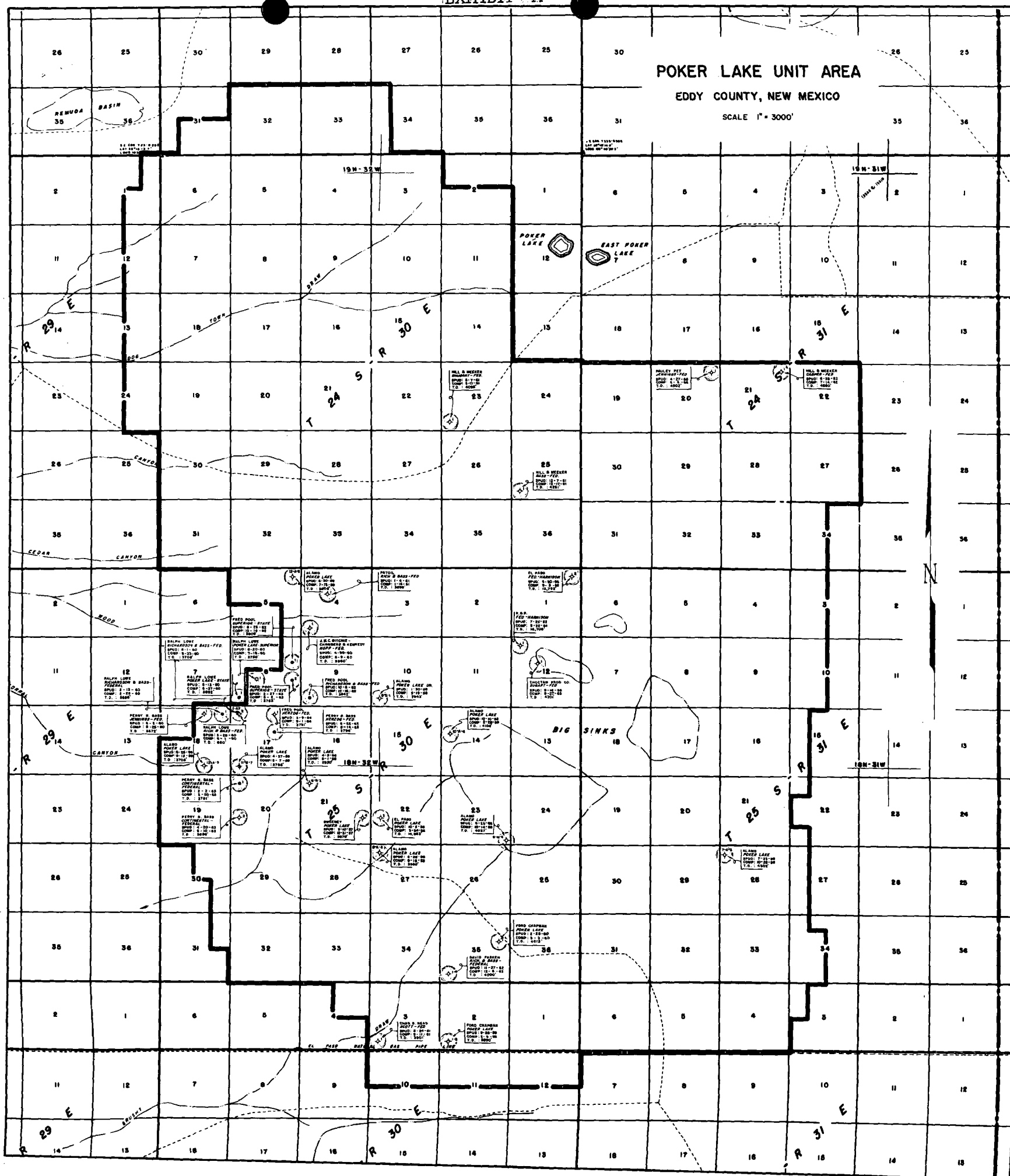
HWJ:lcc

Approved: \_\_\_\_\_ Date: \_\_\_\_\_  
Supervisor, United States Geological Survey

Approved: \_\_\_\_\_ Date: \_\_\_\_\_  
Commissioner of Public Lands

Approved:  Date: July 18, 1966  
Oil Conservation Commission

SCALE 1" = 3000'



MAIN OFFICE 000

'66 May 11 AM 8 11

May 10, 1966

Perry R. Bass  
12th Floor Fort Worth National  
Bank Building  
Fort Worth, Texas

Re: Poker Lake Unit  
Eddy County, New Mexico

ATTENTION: Mr. Howard W. Jennings

Gentlemen:

Your Plan of Development dated March 9, 1966, for  
Poker Lake Unit, Eddy County, New Mexico has been approved  
by the Commissioner of Public Lands, subject to like approval  
by the United States Geological Survey.

This Plan of Development is for the period January 1,  
1966 to January 1, 1967 and provides for the drilling of at  
least two additional shallow wells and one deep Devonian  
test during this period.

We are returning one approved copy of this plan.

Very truly yours,

GUYTON B. HAYS  
COMMISSIONER OF PUBLIC LANDS  
BY:  
Ted Bilberry, Director  
Oil and Gas Department

GBH/MMR/s  
cc: See attached page

Perry R. Bass  
May 10, 1966  
Page 2.

United States Geological Survey  
PO. Drawer 1857  
Roswell, New Mexico

New Mexico Oil Conservation Commission  
P. O. Box 2088  
Santa Fe, New Mexico



UNITED STATES  
DEPARTMENT OF THE INTERIOR  
GEOLOGICAL SURVEY

Drawer 1857  
Roswell, New Mexico 88201

June 16, 1966

IN REPLY REFER TO:

MAIN OFFICE 0000

966 JUN 20 AM 7 51

Perry R. Bass  
Fort Worth National Bank Building  
Fort Worth, Texas

Attention: Mr. Howard W. Jennings

Gentlemen:

Your 1966 plan of development dated March 9, 1966, for the Poker Lake unit area, Eddy County, New Mexico, proposing the drilling of two Delaware wells and advising that one Devonian test well may be drilled, has been approved on this date subject to like approval by the appropriate State officials.

One approved copy of the plan is enclosed.

Sincerely yours,

(ORIG. SED.) JOHN A. ANDERSON

JOHN A. ANDERSON  
Regional Oil and Gas Supervisor

cc:  
Washington (w/cy plan)  
Artesia (w/cy plan)  
NMOCC - Santa Fe (ltr. only) ✓  
Com. of Public Lands - Santa Fe (ltr. only)

PERRY R. BASS  
12<sup>TH</sup> FLOOR FT. WORTH NAT'L BANK BLDG.  
FORT WORTH, TEXAS

June 22, 1966

MAIN OFFICE 000

'66 JUN 24 AM 7 42

Oil Conservation Commission  
State of New Mexico  
P. O. Box 2088  
Santa Fe, New Mexico 87501

Re: Plan of Development - January 1,  
1966 to January 1, 1967 - Poker Lake  
Unit Area No. 14-08-001-303 -  
Eddy County, New Mexico

Gentlemen:

We refer to subject Plan of Development which was submitted to your office on March 9, 1966.

Approval has been received from the U.S.G.S. and the Commissioner of Public Lands, and we would appreciate receiving your approval at your earliest convenience.

Very truly yours,

PERRY R. BASS

By:   
Howard W. Jennings

HWJ:lcc



OIL CONSERVATION COMMISSION

P. O. BOX 871

SANTA FE, NEW MEXICO

366

July 18, 1966

C  
O  
P  
Y  
  
Ferry R. Bass  
Fort Worth National Bank Building  
Fort Worth, Texas

Attention: Mr. Howard W. Jennings

Re: Plan of Development  
January 1, 1966 to  
January 1, 1967, Poker  
Lake Unit, Eddy County,  
New Mexico

Gentlemen:

This is to advise that the New Mexico Oil Conservation Commission has this date approved the Plan of Development dated March 9, 1966, for the Poker Lake Unit, Eddy County, New Mexico, subject to like approval by the United States Geological Survey and the Commissioner of Public Lands of the State of New Mexico.

One approved copy of the plan is returned herewith.

Very truly yours,

A. L. PORTER, Jr.,  
Secretary-Director

ALP/JEK/og

cc: U. S. Geological Survey - Roswell  
Commissioner of Public Lands - Santa Fe



December 27, 1966

United States Geological Survey  
Commissioner of Public Lands  
New Mexico Oil Conservation Commission

RE: Plan of Development - January 1,  
1967 to January 1, 1968 - Poker Lake  
Unit Area No. 14-08-001-303 -  
Eddy County, New Mexico

Gentlemen:

In compliance with Section 10 of the Poker Lake Unit Agreement, dated July 16, 1952, Perry R. Bass, as Unit Operator, hereby submits for your approval Plan of Development covering the period from January 1, 1967, to January 1, 1968.

History of Past Development

A review of the past development on the Poker Lake Unit reflects that we have drilled, or caused to be drilled, 32 shallow wells and three deep wells. We are attaching hereto a map, marked Exhibit "A", which reflects all of the wells drilled within this Unit Area since the Unit was approved. Three of these wells, as we have pointed out previously, are extremely deep wells, all of which were drilled below 13,500 feet. In addition to the three deep wells, the 32 shallow wells have been drilled to various depths in search of Delaware or Lower Delaware production.

Development

The Unit Operator in association with Pan American Petroleum Corporation has conducted an extensive seismograph program which included shooting the entire Unit Area. Based on information derived from this effort, Pan American is currently engaged in active wildcatting with Poker Lake Unit Well No. 36 being drilled in Section 28 of T-24-S, R-31-E. The well is currently drilling below 14,000 feet with a projected total depth of 16,200 feet. Based on testing in this well, it is hoped additional development wells can be justified.

Effective Date

This Plan of Development shall be effective January 1, 1967, and expire January 1, 1968.

Yours very truly,

PERRY R. BASS

By   
Howard W. Jennings

Attachment

United States Geological Survey  
Commissioner of Public Lands  
New Mexico Oil Conservation Commission  
Page 2

Approved: \_\_\_\_\_ Date: \_\_\_\_\_  
Supervisor, United States Geological Survey

Approved: \_\_\_\_\_ Date: \_\_\_\_\_  
Commissioner of Public Lands

Approved: *C. L. Carter* Date: *January 26, '967*  
Oil Conservation Commission

POKER LAKE UNIT AREA  
EDDY COUNTY, NEW MEXICO  
SCALE 1" = 3000'

