



5232

EOG Resources, Inc.
P. O. Box 2267
Midland, TX 79702

February 28, 2013

Bureau of Land Management
Carlsbad Field Office
620 E. Greene St.
Carlsbad, New Mexico 88220-6292

State of New Mexico
Oil Conservation Division
1220 South St. Francis Drive
Santa Fe, New Mexico 87504

Re: Phantom Draw Federal Exploratory Unit
Serial No. NMNM 71013X
2013 Plan of Development
Eddy County, New Mexico
EOG Resources, Inc. Contract K0010525

Gentlemen:

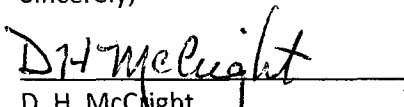
EOG Resources, Inc. (EOG), as Unit Operator of the Phantom Draw Federal Exploratory Unit (PDFEU), hereby submits for your approval, our 2013 Plan of Development.

Items included are as follows: Planned 2013 operations; previous year operations; current status of all wells within the unit; production graphs for each productive reservoir. Also attached is a current map, showing respectively the units: structural and geologic interpretations; participating area boundaries; wells, flow-lines, and roads.

It is understood that approval of this plan does not approve the work covered by the plan. Individual approval is still required for such items as APDs/ROWS/etc.

Any modifications or additions to this Plan of Development will be filed as supplements to the plan.

Sincerely,


D. H. McNight
Land Specialist

RECEIVED OGD
2013 MAR -1 A 11:26

2013 Planned Operations:

Drilling -

At this time, EOG does not plan any new drill wells in the PDFEU.

Completions -

At this time, EOG does not plan any new drill wells in the PDFEU.

Plug Back -

At this time, EOG does not plan any plug backs in the PDFEU.

Conversion -

At this time, EOG does not plan any conversions in the PDFEU.

Abandonment -

None

Other surface disturbing operations -

None

Previous Year Operations (2012):

Drilling –

EOG did not drill any new wells in the PDFEU in 2012.

Completions –

EOG did not complete any wells in the PDFEU in 2012.

Plug Back –

EOG did not plug back any wells in the PDFEU in 2012.

Conversion –

EOG did not complete any conversions in the PDFEU in 2012.

Abandonment –

None

Other surface disturbing operations –

None

Status of all Wells within the Unit:

WELL NAME & NUMBER	API NUMBER	COMP DATE	ZONE	STATUS
Phantom Draw Fed Unit #4	3001531235	10/7/2000	Wolfcamp	Flowing

Production Graphs:

See Attachments

Map of structural and geologic interpretations, participating area boundaries, wells, flow-lines, and roads:

See Attachment


The working interest owners have been provided a copy of this 2013 Plan of Development. EOG Resources, Inc. and the working interest owners believe that all current Phantom Draw Federal Exploratory Unit obligations have been satisfied.

In accordance with Section 10 of the Phantom Draw Federal Exploratory Unit Agreement, please signify your approval of the 2013 Plan of Development by executing in the signature block below. Please return one approved copy to EOG Resources, Inc. at the letterhead address.

Should you have any questions or comments in this regard, please contact me at 432-686-3741.

Bureau of Land Management

Date



3/4/2013

New Mexico Oil Conservation Division

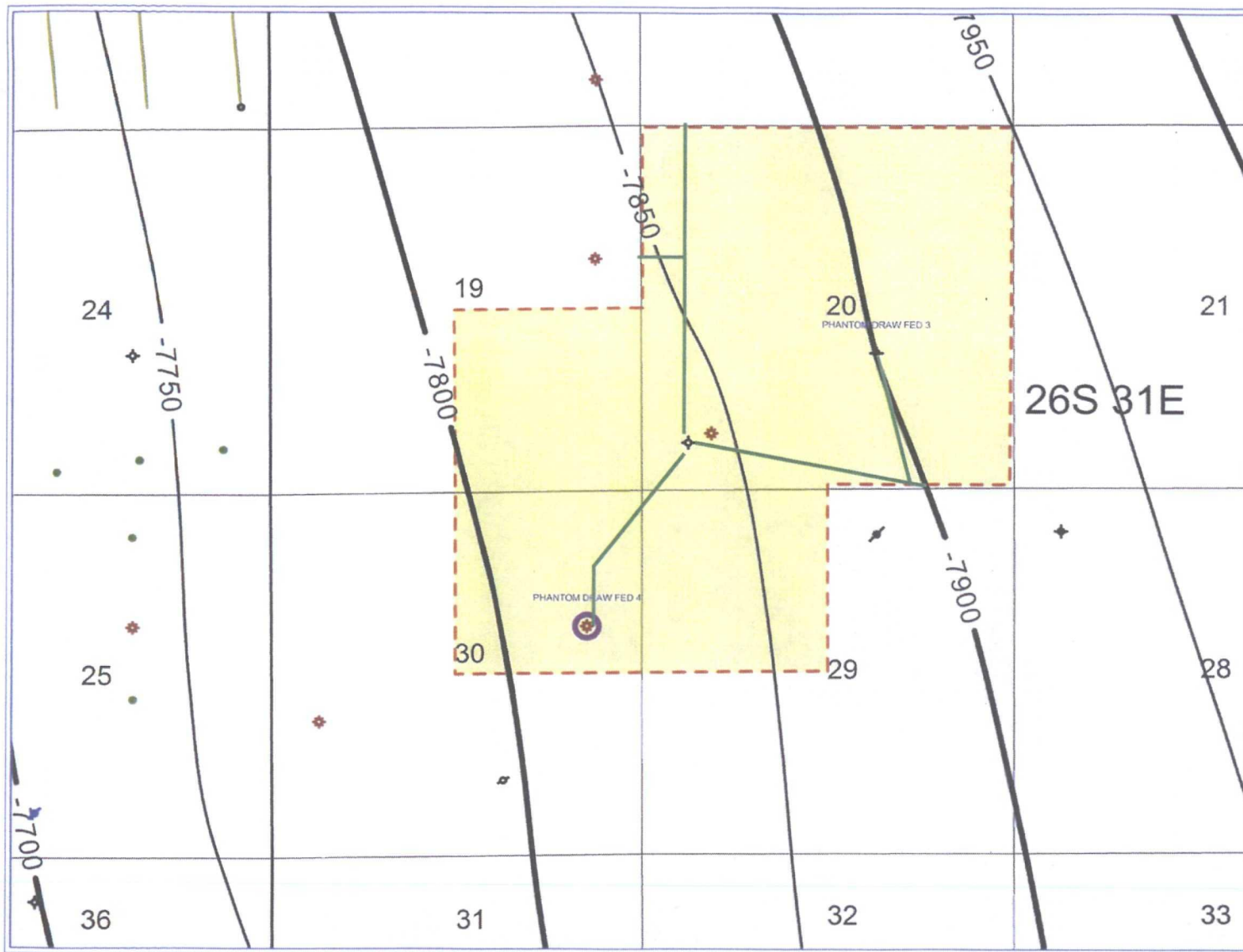
Date

The foregoing approvals are for the 2013 Plan of Development for the Phantom Draw Federal Exploratory Unit, Eddy County, New Mexico.

cc: Yates Petroleum Corporation
105 South Fourth St.
Artesia, New Mexico 88210
Attn: Janet Richardson

Mountain Home Oil Company
4505 Meadowlark
Midland, Texas 79707
Attn: Ken Gray


Tom R. Cone
P. O. Box 778
Jay, Oklahoma 74346




**Phantom Draw Unit
Eddy County, NM**

**Twn / Rng:
26S-31E**

Structure on
Top of Wolfcamp
Contour Interval 50 feet

 Operating Unit
Boundary

**Phantom Draw Unit
Eddy County, NM
Twn / Rng:
26S - 31E**

 Operating Unit Boundary
& Existing PA

 Roads/Pipelines

PHANTOM DRAW FED UNIT #4

