

**Randy Stilwell**  
**Sr. Geologic Advisor**

Education: BS (Geology) – Cleveland State University  
MS (Earth Sciences) – Univ. of New Orleans

Work Experience: 33 years as a Petroleum Geologist ( 21 years in Permian Basin)

•Shell Oil Company – 1979-2000

▪Exploration Geologist on numerous U.S. onshore plays including: Williston Basin (N.D.), Michigan Basin, Rio Grande Rift (N.M. & CO), Permian Basin (TX & N.M.) and Texas Gulf Coast.

•Oxy Permian– 2000 to present

▪Integrated Reservoir Management Geologist responsible for creating 3-D geologic models of Oxy-operated properties in the Permian Basin, including Hobbs Field.

▪Currently: Production Geologist assigned to the Hobbs Field team, utilizing the 3-D model I created & revised, to assist in improving field performance, including the implementation of CO2 flood in a portion of the North Hobbs Unit.

Randy Stilwell  
Sr. Geologic Advisor

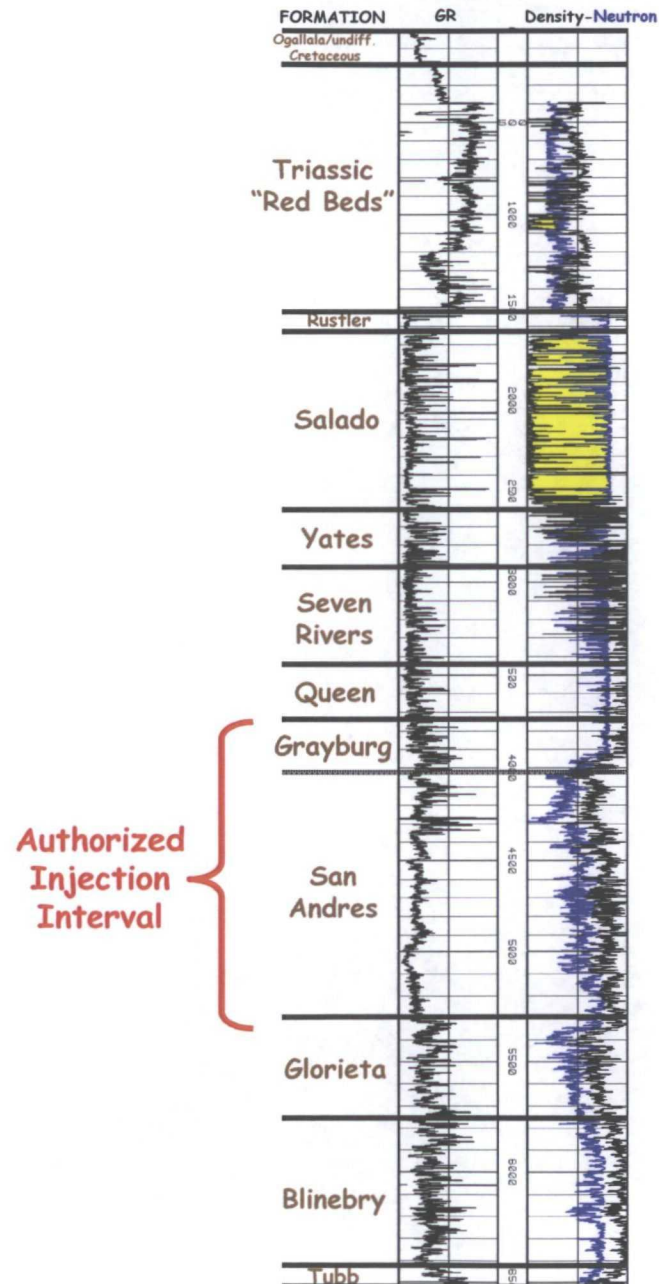
Professional Affiliations:

- American Association of Petroleum Geologists
- Houston Geologic Society
- West Texas Geologic Society
- Permian Basin Section-Society of Economic Paleontologists and Mineralogists

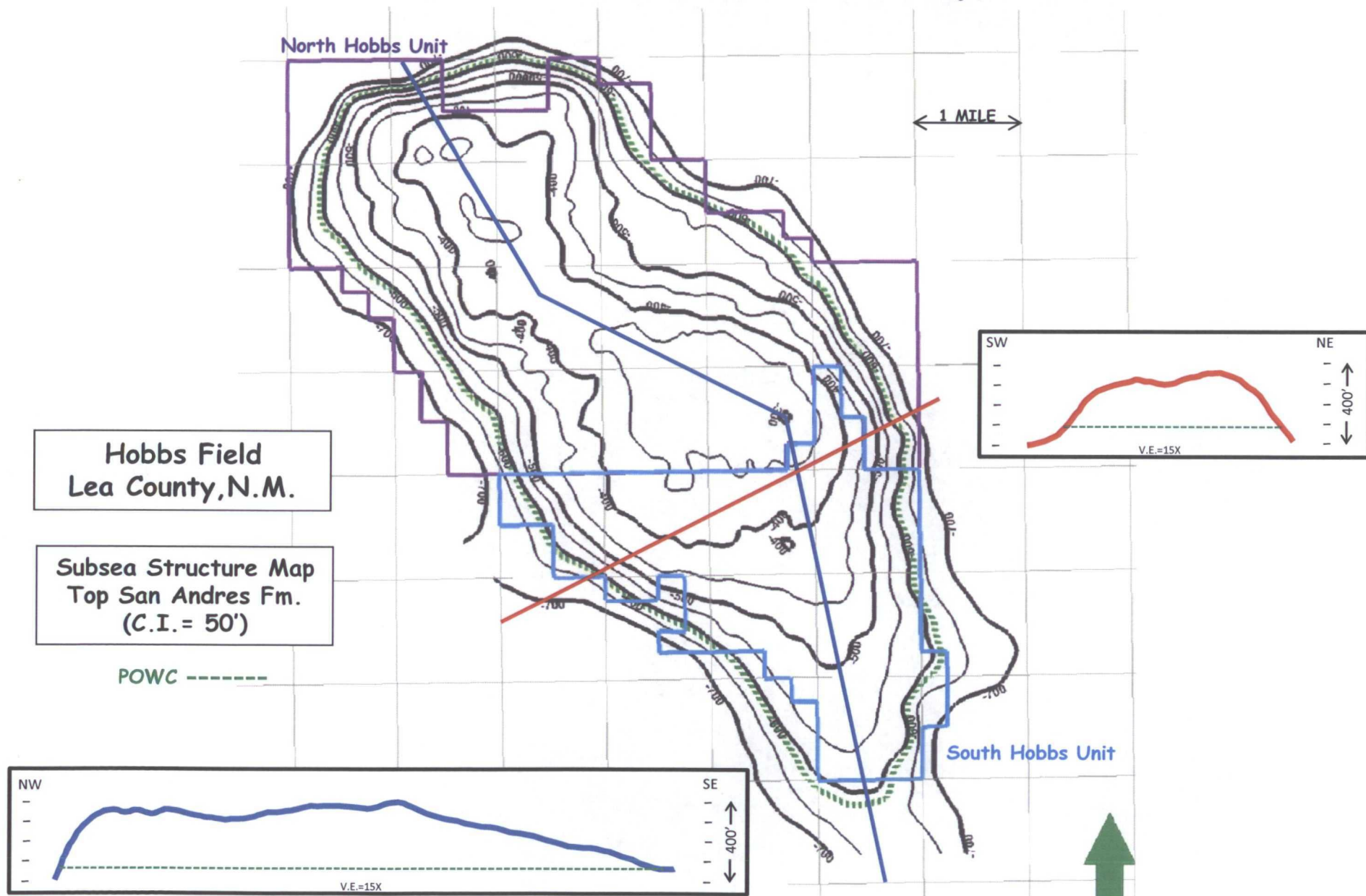
Certifications:

- Texas licensed Professional Geoscientist (#6375)

# South Hobbs Unit General Type Log

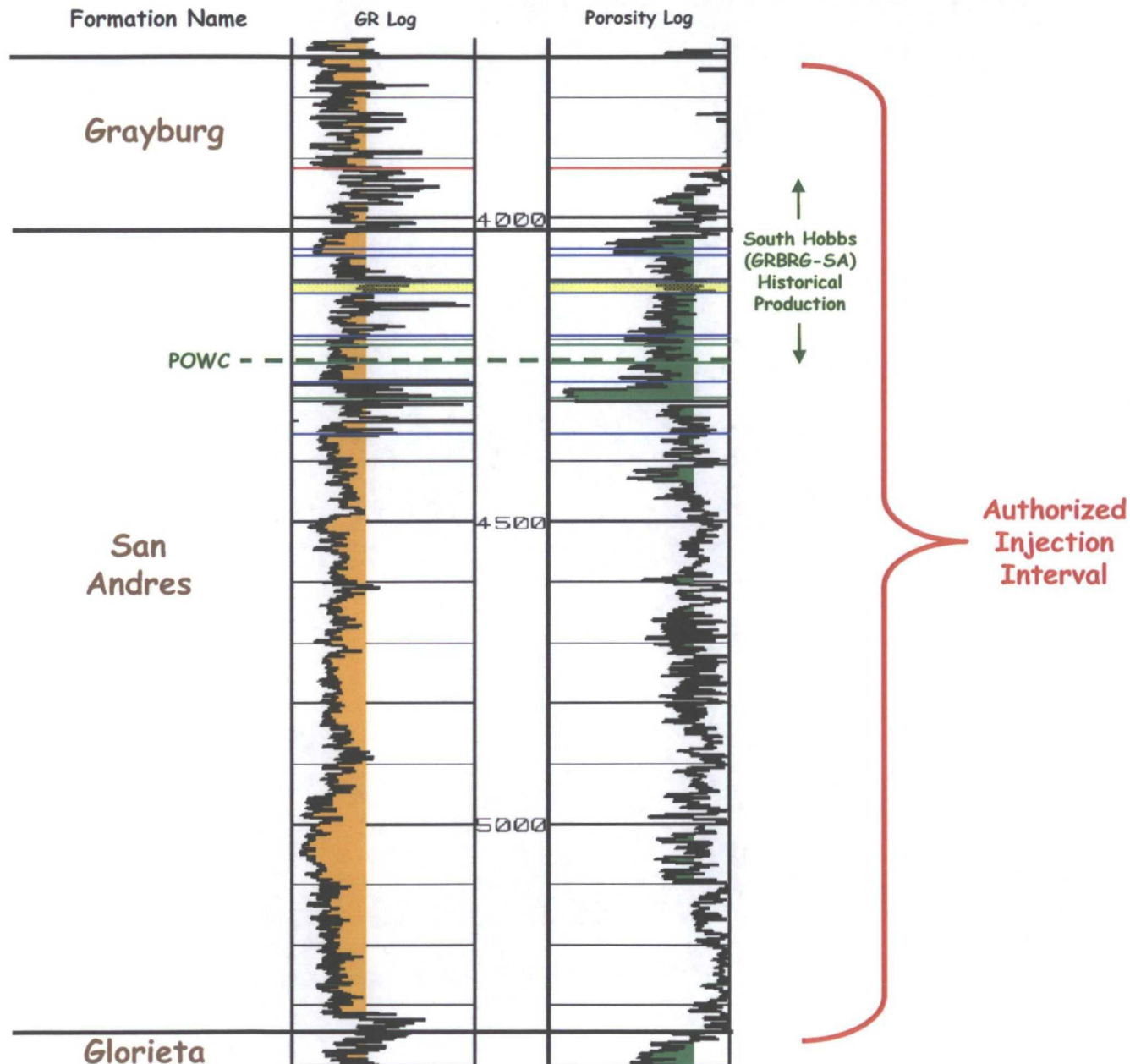


# Hobbs Field Structure Map

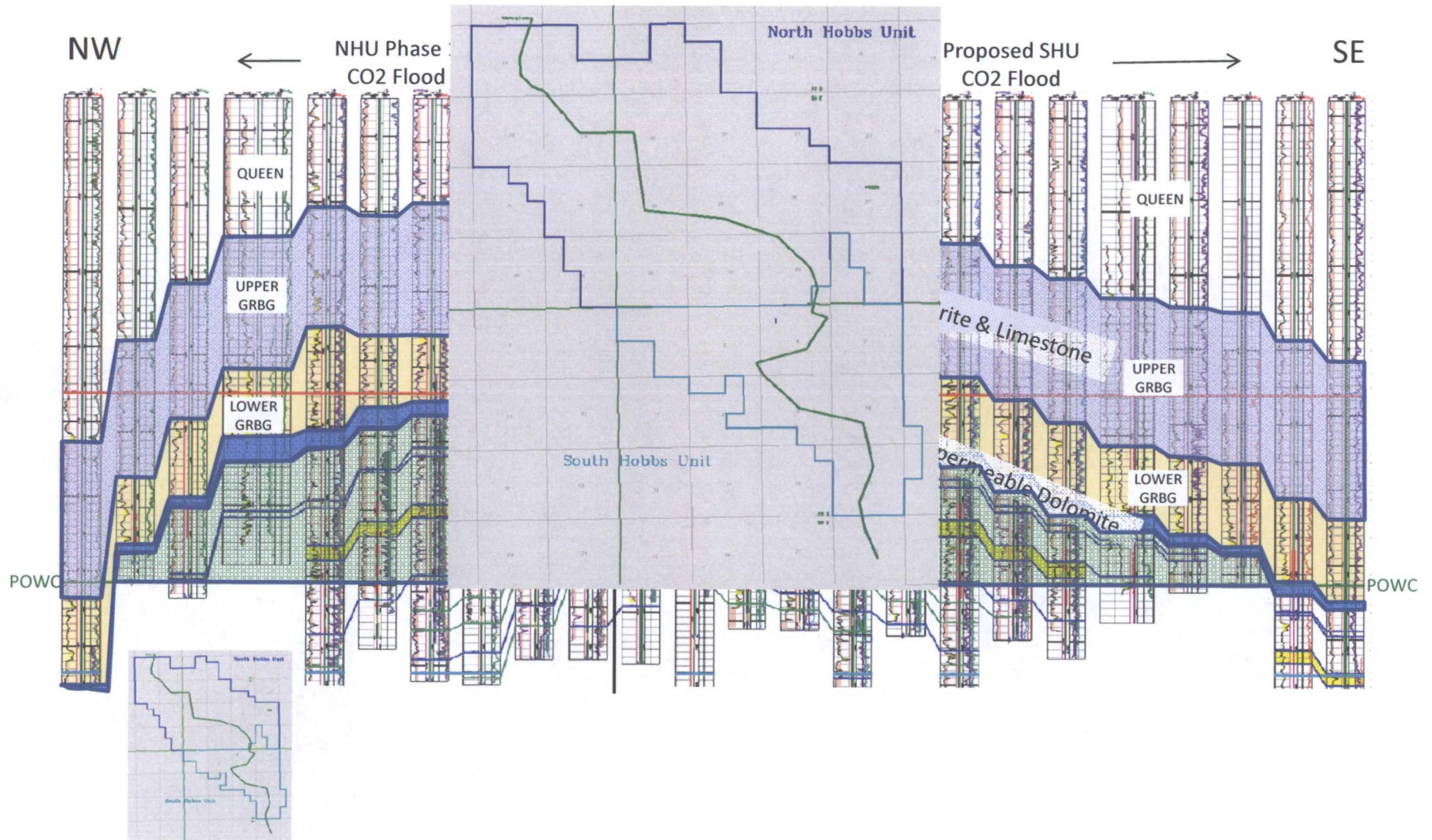




# South Hobbs Unit Detailed Type Log

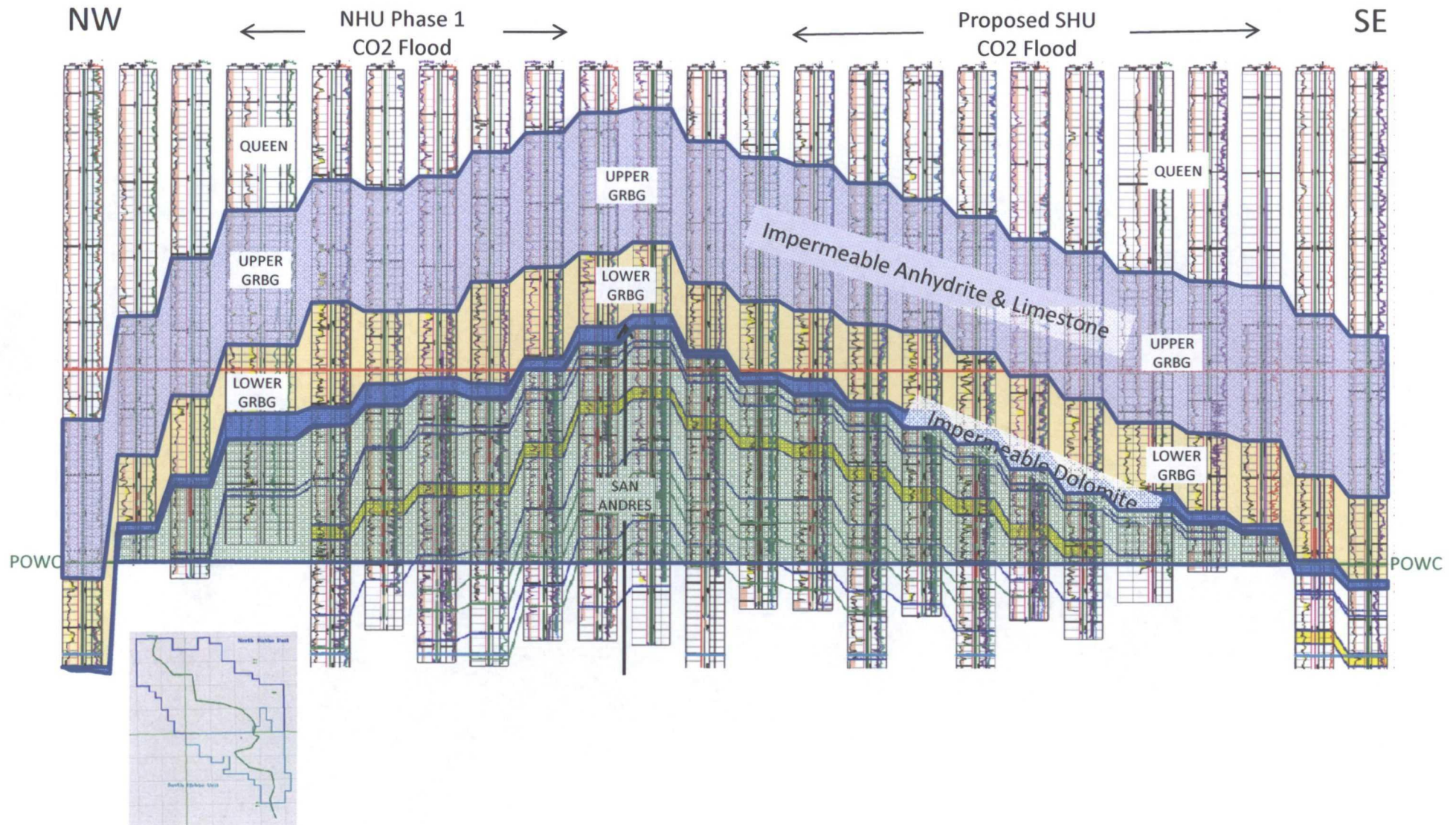


# Hobbs Field Regional Cross-section

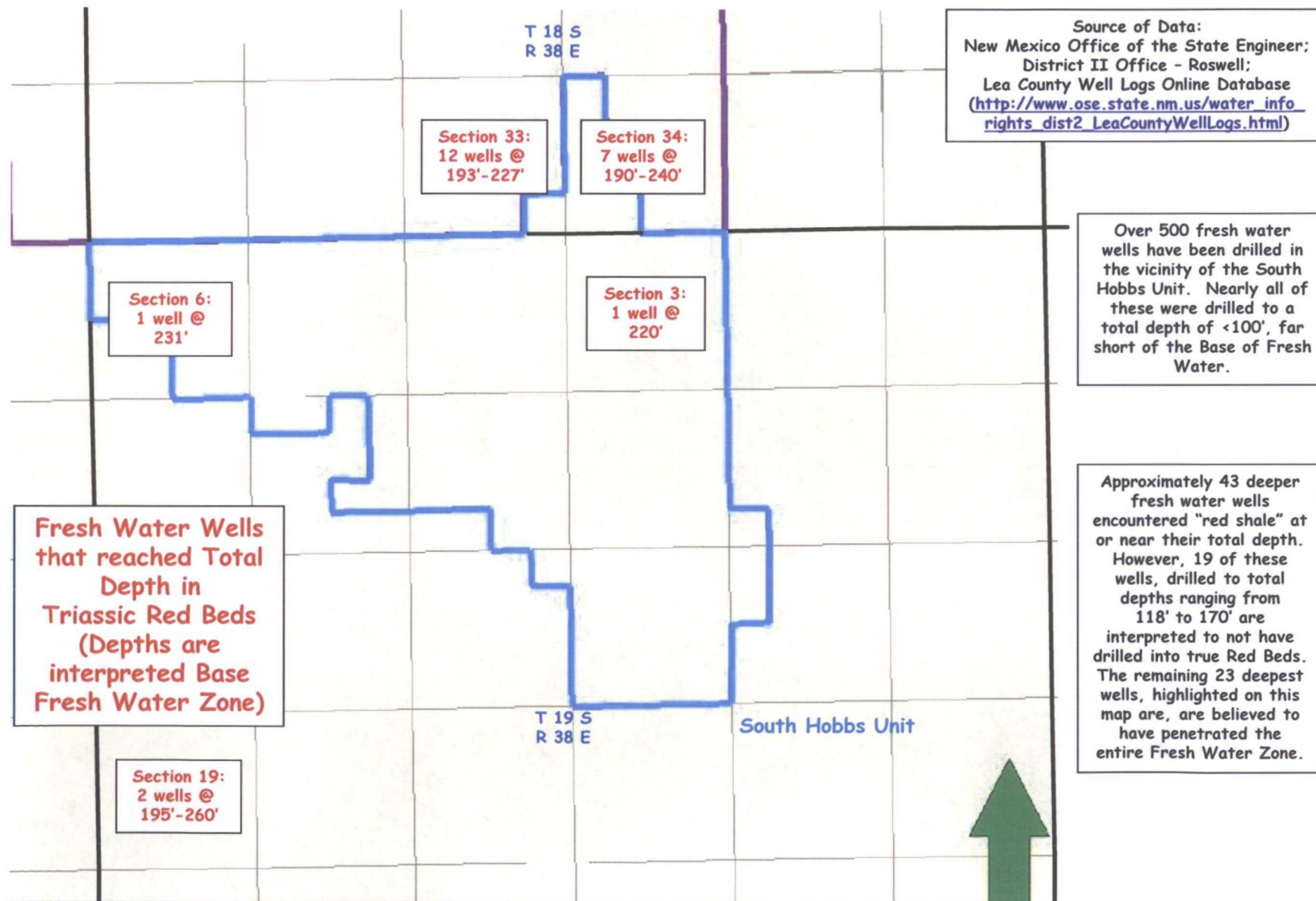




# Hobbs Field Regional Cross-section



# South Hobbs Unit Base Fresh Water Zone





# South Hobbs Unit Type Log - Fresh Water Zones Isolation

