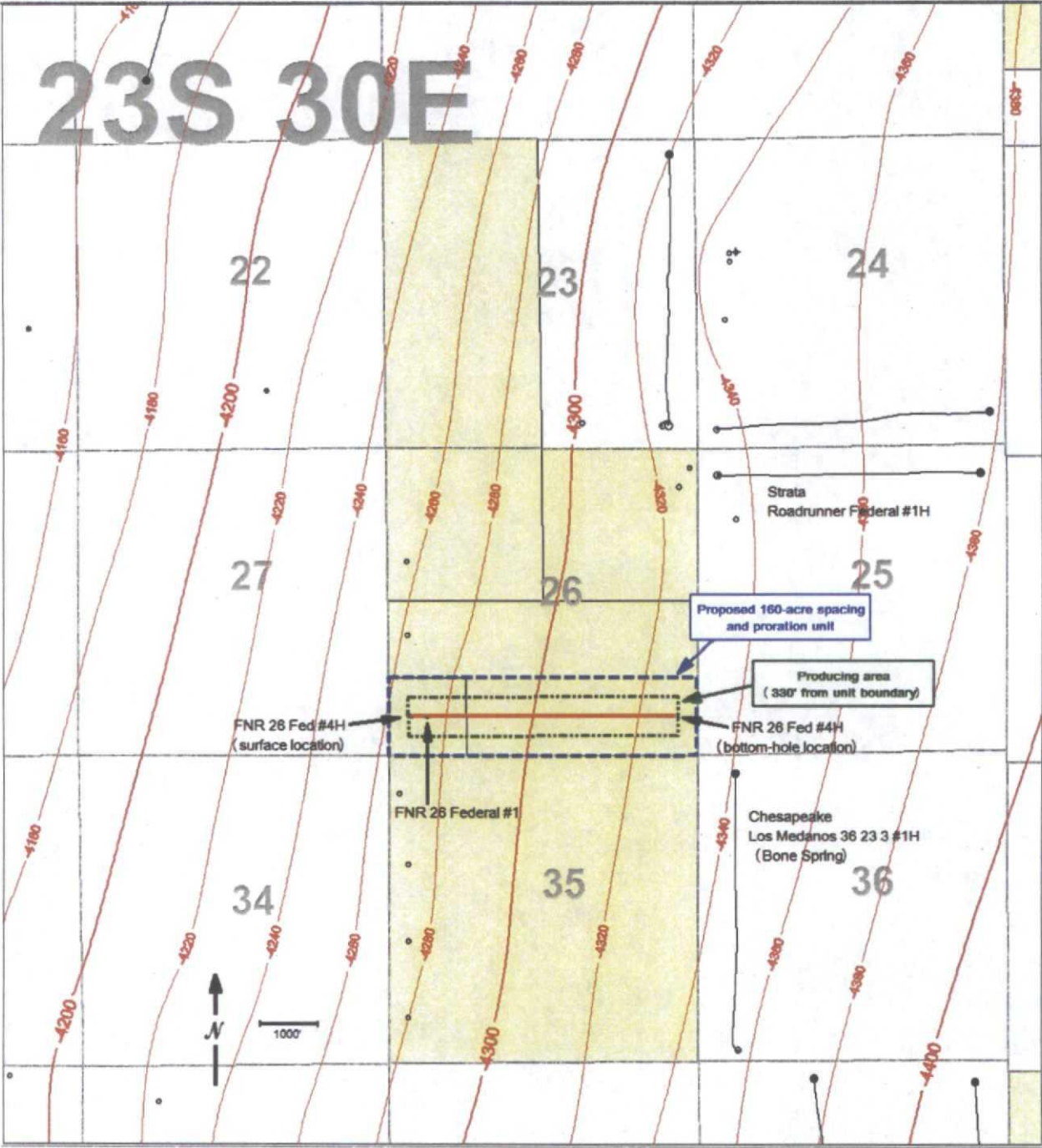


Outline of proposed 160-acre spacing and proration unit  
and structure map



<div>OXY U.S.A. Inc.</div> <div>Application for non-standard spacing and proration unit and compulsory pooling</div> <div>Section 26-T23S-R30E, Eddy County, New Mexico</div>	
Structure: Top of Brushy Canyon A2 porosity zone	Case number 15006 Hearing date: June 27, 2013
Contour interval: 20'	Exhibit prepared by: Richard J. Erickson