

DISTRICT I
1825 N. FRANCH DR., HOBBS, NM 88240
Phone: (575) 393-6161 Fax: (575) 393-0720

DISTRICT II
611 S. FIRST ST., ARTESIA, NM 88210
Phone: (505) 748-1283 Fax: (505) 748-1282

DISTRICT III
1000 RIO BRAZOS RD., AZTEC, NM 87410
Phone: (505) 334-8178 Fax: (505) 334-8122

DISTRICT IV
1220 S. ST. FRANCIS DR., SANTA FE, NM 87505
Phone: (505) 478-3460 Fax: (505) 478-3462

State of New Mexico
Energy, Minerals & Natural Resources Department
CONSERVATION DIVISION
1220 SOUTH ST. FRANCIS DR.
Santa Fe, New Mexico 87505

Form C-102
Revised August 1, 2011
Submit one copy to appropriate
District Office

☐ AMENDED REPORT

WELL LOCATION AND ACREAGE DEDICATION PLAT

API Number 30-025-41666	Pool Code 39434	Pool Name Red Hills; Bone Spring, North
Property Code 40400	Property Name SEBASTIAN FEDERAL COM	Well Number 2H
OGRD No. 229137	Operator Name COG OPERATING, LLC	Elevation 3591.5

Surface Location

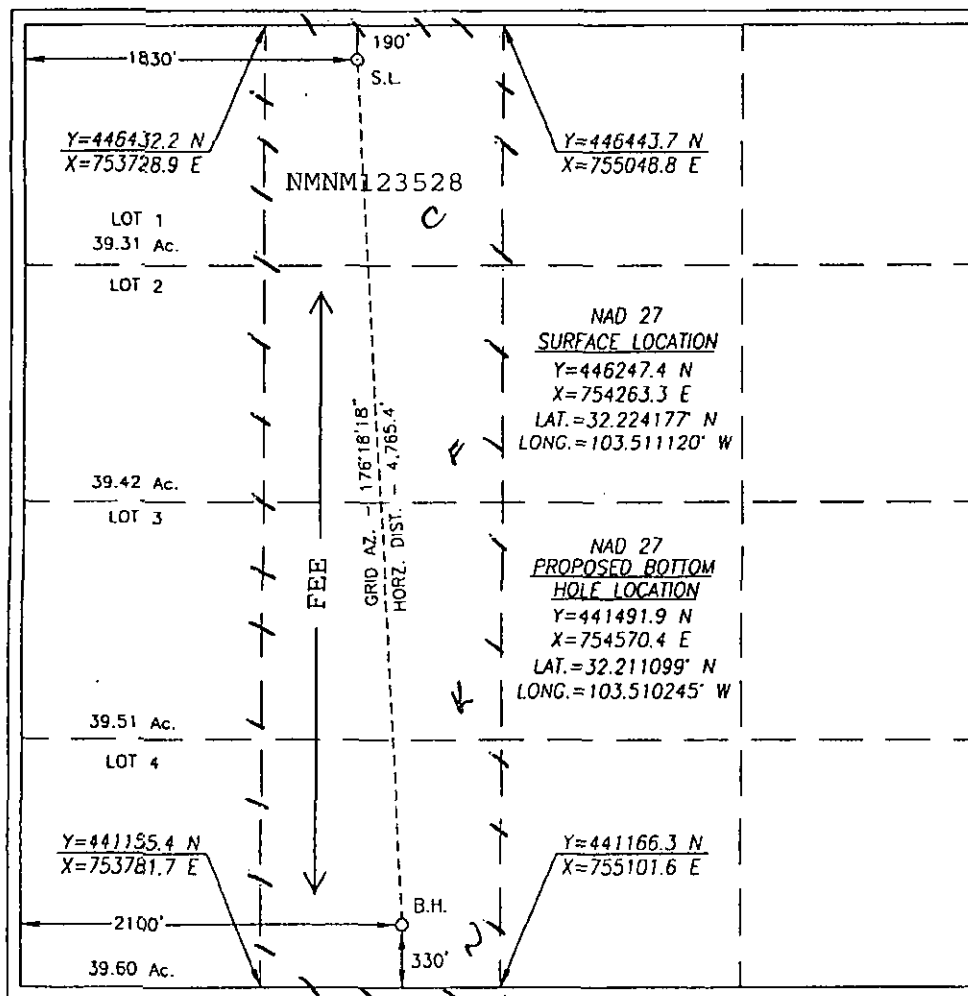
UL or lot No.	Section	Township	Range	Lot Idn	Feet from the	North/South line	Feet from the	East/West line	County
C	18	24-S	34-E		190	NORTH	1830	WEST	LEA

Bottom Hole Location If Different From Surface

UL or lot No.	Section	Township	Range	Lot Idn	Feet from the	North/South line	Feet from the	East/West line	County
N	18	24-S	34-E		330	SOUTH	2100	WEST	LEA

Dedicated Acres	Joint or Infill	Consolidation Code	Order No.
160			

NO ALLOWABLE WILL BE ASSIGNED TO THIS COMPLETION UNTIL ALL INTERESTS HAVE BEEN CONSOLIDATED
OR A NON-STANDARD UNIT HAS BEEN APPROVED BY THE DIVISION



OPERATOR CERTIFICATION

I hereby certify that the information herein is true and complete to the best of my knowledge and belief, and that this organization either owns a working interest or unleased mineral interest in the land including the proposed bottom hole location or has a right to drill this well at this location pursuant to a contract with an owner of such mineral or working interest, or to a voluntary pooling agreement or a compulsory pooling order heretofore entered by the division.

Signature

Date

Printed Name

E-mail Address

SURVEYOR CERTIFICATION

I hereby certify that the well location shown on this plat was plotted from field notes of actual surveys made by me or under my supervision, and that the same is true and correct to the best of my belief.

AUGUST 13, 2013

Date of Survey

Signature & Seal of Professional Surveyor



Certificate No. CHAD HARCROW 17777
W.O. # 13-561 DRAWN BY: VD

FEB 20 2014