



**BEFORE THE OIL CONSERVATION DIVISION
EXAMINER HEARING OCTOBER 16, 2014
CASE No. 15216**

**RKI EXPLORATION & PRODUCTION, LLC
HEARING EXHIBITS**

DISTRICT I
1435 N. French Dr., Hobbs, NM 88240
Phone: (575) 393-6161 Fax: (575) 393-6730
DISTRICT II
811 S. First St., Artesia, NM 88210
Phone: (575) 748-1283 Fax: (575) 748-9720
DISTRICT III
1000 Rio Brazos Rd., Aztec, NM 87410
Phone: (505) 334-6178 Fax: (505) 334-6170
DISTRICT IV
1220 S. St. Francis Dr., Santa Fe, NM 87505
Phone: (505) 476-3460 Fax: (505) 476-3462

State of New Mexico
Energy, Minerals & Natural Resources Department
OIL CONSERVATION DIVISION
1220 South St. Francis Dr.
Santa Fe, New Mexico 87505

Form C-102
Revised August 1, 2011
Submit one copy to appropriate
District Office
☐ AMENDED REPORT

WELL LOCATION AND ACREAGE DEDICATION PLAT

API Number	Pool Code 13354	Pool Name UNDESIGNATED WOLFCAMP
Property Code	Property Name NORTH BRUSHY DRAW FEDERAL COM 35	Well Number 4H
OGRID No. 246289	Operator Name RKI EXPLORATION & PRODUCTION	Elevation 2997'

Surface Location

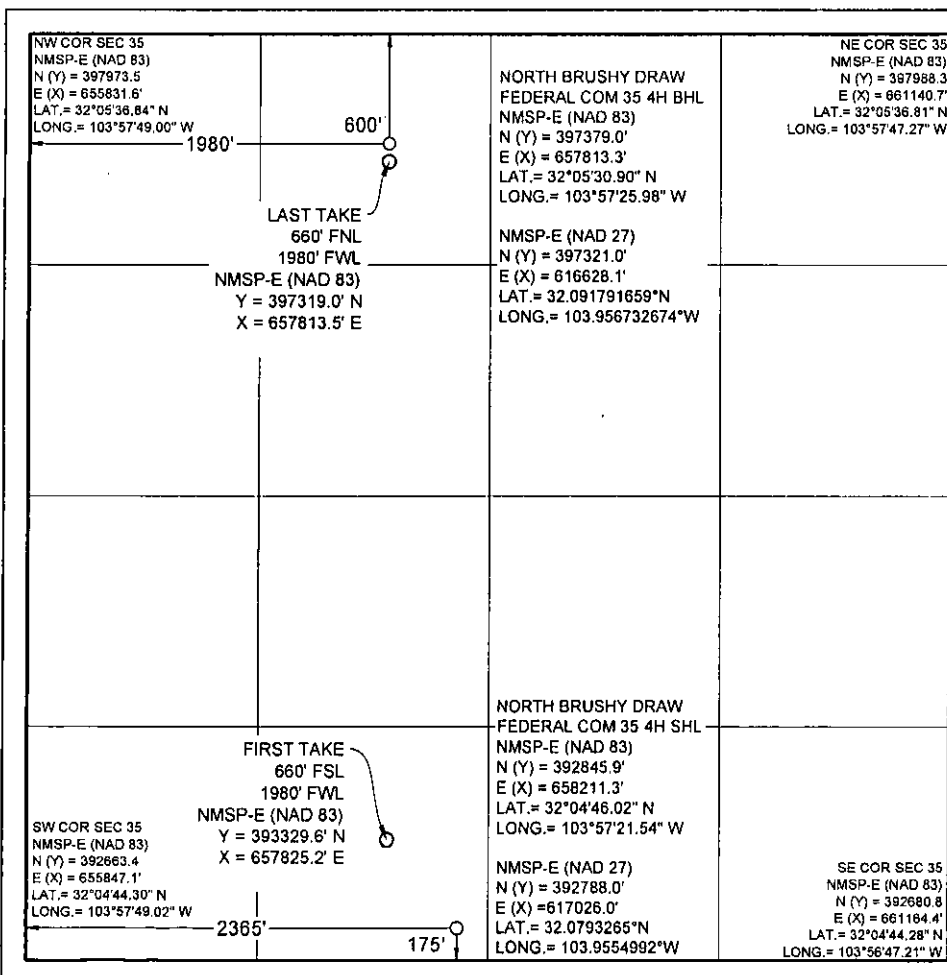
UL or lot no.	Section	Township	Range	Lot Idn	Feet from the	North/South line	Feet from the	East/West line	County
N	35	25 S	29 E		175	SOUTH	2365	WEST	EDDY

Bottom Hole Location If Different From Surface

UL or lot no.	Section	Township	Range	Lot Idn	Feet from the	North/South line	Feet from the	East/West line	County
C	35	25 S	29 E		600	NORTH	1980	WEST	EDDY

Dedicated Acres 320	Joint or Infill	Consolidated Code	Order No
------------------------	-----------------	-------------------	----------

No allowable will be assigned to this completion until all interests have been consolidated or a non-standard unit has been approved by the division.



OPERATOR CERTIFICATION

I hereby certify that the information contained herein is true and complete to the best of my knowledge and belief, and that this organization either owns a working interest or undivided mineral interest in the land including the proposed bottom hole location or has a right to drill this well at this location pursuant to a contract with an owner of such a mineral or working interest, or to voluntary pooling agreement or a compulsory pooling order heretofore entered by the division.

Signature _____ Date _____

Print Name _____

E-mail Address _____

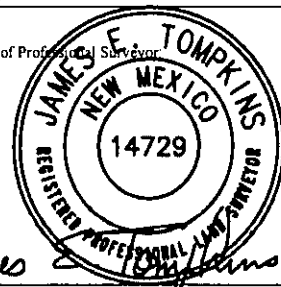
SURVEYORS CERTIFICATION

I hereby certify that the well location shown on this plat was plotted from field notes of actual surveys made by me or under my supervision, and that the same is true and correct to the best of my belief.

December 29, 2013

Date of Survey

Signature and Seal of Professional Surveyor



Job No.: WTC49483

JAMES E. TOMPKINS 14729

Certificate Number

BEFORE THE OIL CONSERVATION
DIVISION

Santa Fe, New Mexico

Exhibit No. 1

Submitted by: RKI Exploration & Production