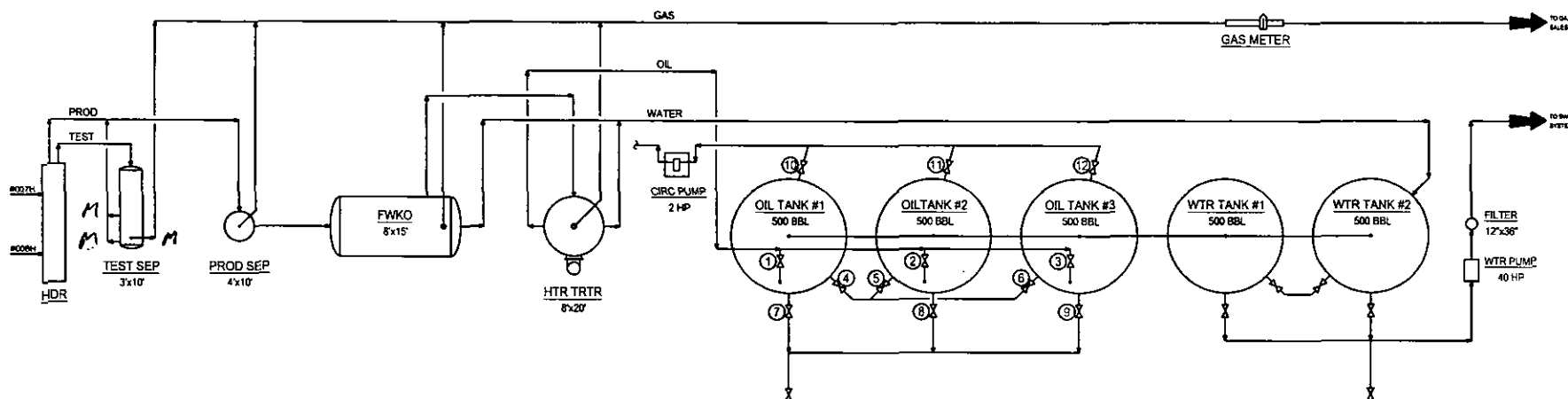


WELLS:
FALABELLA 31 FEE #007H: 30-015-39514
FALABELLA 31 FEE #008H: 30-015-39515



Production Phase - Oil Tank #1

- Valve 1 open
- Valves 2 and 3 closed
- Valves 4, 5, and 6 open
- Valves 7, 8, and 9 closed
- Valves 10, 11, and 12 closed

Sales Phase - Oil Tank #1

- Valve 1 closed
- Valves 2 or 3 open
- Valve 4 closed
- Valves 5 and 6 open
- Valve 7 open
- Valves 8 and 9 closed
- Valves 10, 11, and 12 closed

[illegible]

**BEFORE THE OIL CONVERSION
DIVISION**
Santa Fe, New Mexico
Exhibit No. 13
Submitted by: **COG RESOURCES INC.**
Hearing Date: September 17, 2014