

A

A'

Subsea
Depth(ft)
2600 -

2500 -

2400 -

2300 -

2200 -

2100 -

2000 -

1900 -

1800 -

1700 -

1600 -

1500 -

1400 -

1300 -

1200 -

1100 -

1000 -

900 -

800 -

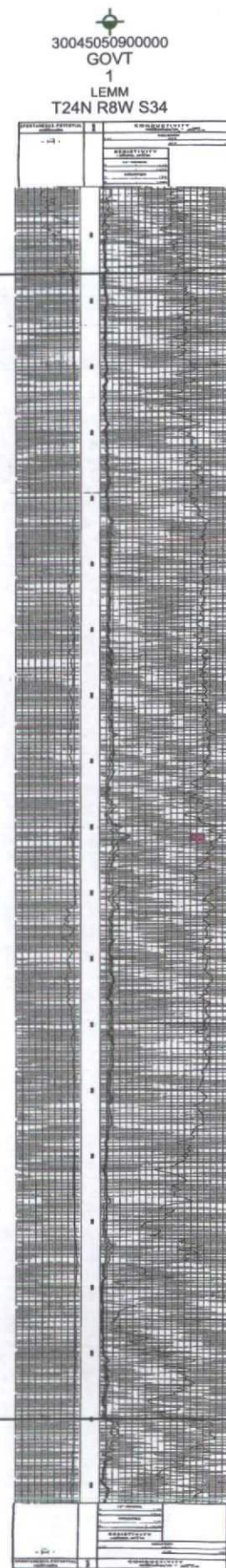
700 -

600 -

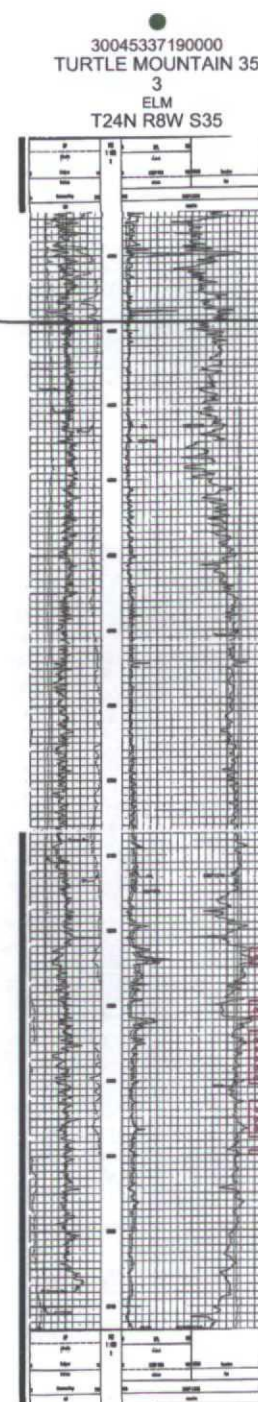
MANCOS

Unit Interval

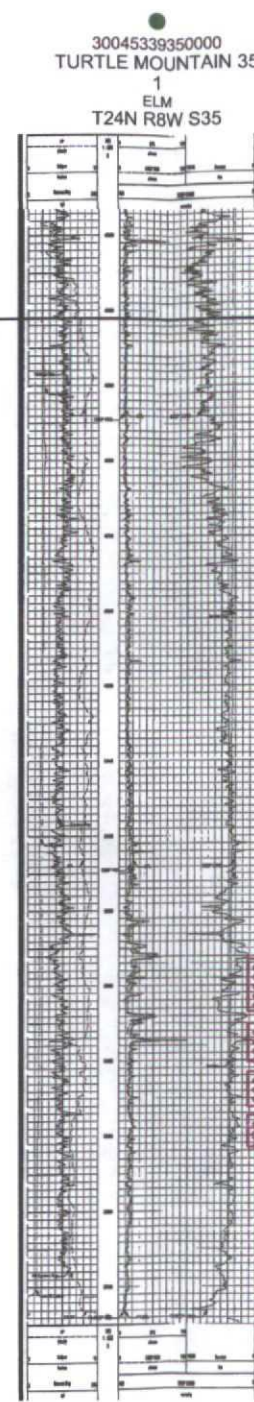
GREENHORN_LS



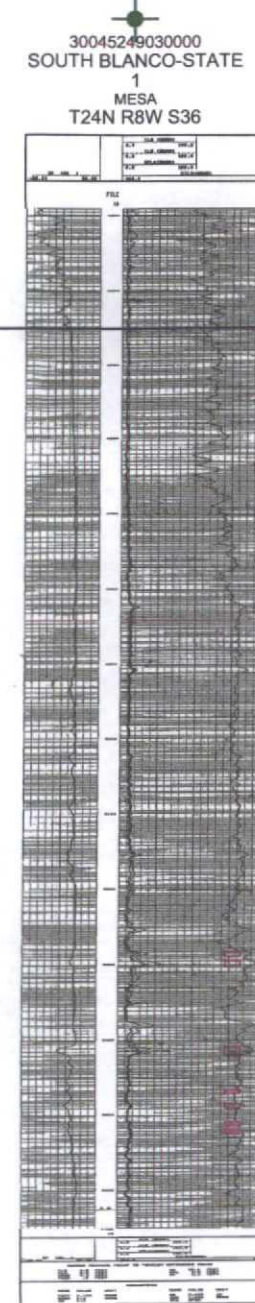
<0.52MI>



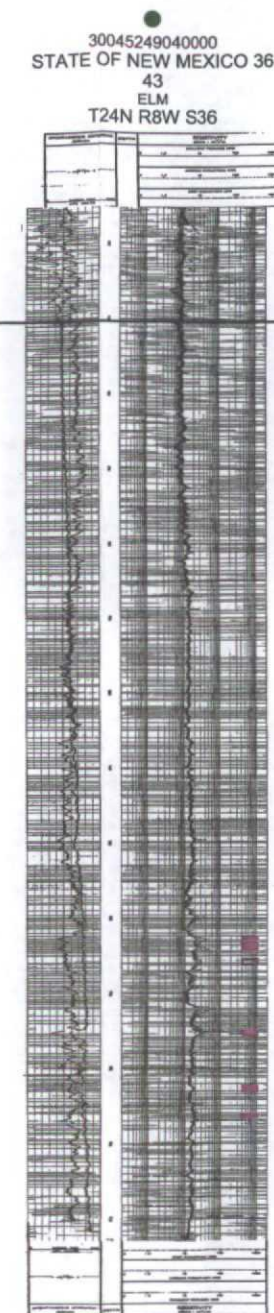
<0.60MI>



<0.41MI>



<0.68MI>

Subsea
Depth(ft)
- 2600

- 2500

- 2400

- 2300

- 2200

- 2100

- 2000

- 1900

- 1800

- 1700

- 1600

- 1500

- 1400

- 1300

- 1200

- 1100

- 1000

- 900

- 800

- 700

- 600

BEFORE THE OIL CONVERSION
DIVISION
Santa Fe, New Mexico
Exhibit No. 8
Submitted by: WPX ENERGY PRODUCTION
Hearing Date: September 17, 2014

WPX

San Juan Basin

NW Lybrook Unit

Strike Cross Section A-A'

Structural Cross Section

By: AMR

September 4, 2014 2:57 PM