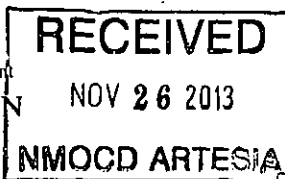


DISTRICT I  
1625 N. FRENCH DR., HOBBS, NM 88240  
DISTRICT II  
1301 W. GRAND AVENUE, ARTESIA, NM 88210  
DISTRICT III  
1000 RIO BRAZOS RD., AZTEC, NM 87410  
DISTRICT IV  
11885 S. ST. FRANCIS DR., SANTA FE, NM 87505

State of New Mexico  
Energy, Minerals & Natural Resources Department  
**OIL CONSERVATION DIVISION**  
1220 South St. Francis Dr.  
Santa Fe, New Mexico 87505



Form C-102  
Revised July 16, 2010  
Submit to Appropriate  
District Office

AMENDED REPORT

### WELL LOCATION AND ACREAGE DEDICATION PLAT

API Number <b>30-015-39586</b>	Pool Code <b>3250</b>	Pool Name <b>ATOKA; GLORIETA-YESO</b>
Property Code <b>38907</b>	Property Name <b>LEE 3 FEE</b>	Well Number <b>1H</b>
OGRID No. <b>229137</b>	Operator Name <b>COG OPERATING, LLC</b>	Elevation <b>3344'</b>

#### Surface Location

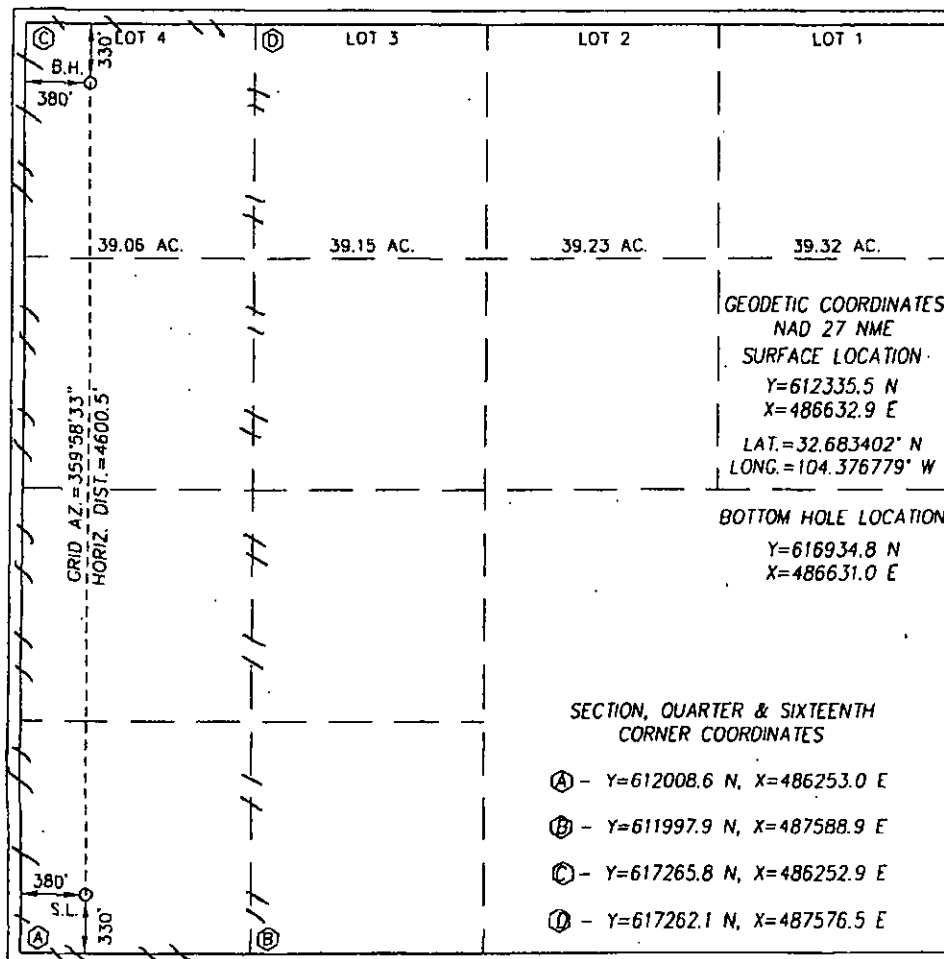
UL or lot No.	Section	Township	Range	Lot Idn	Feet from the	North/South line	Feet from the	East/West line	County
M	3	19-S	26-E		330	SOUTH	380	WEST	EDDY

#### Bottom Hole Location If Different From Surface

UL or lot No.	Section	Township	Range	Lot Idn	Feet from the	North/South line	Feet from the	East/West line	County
4	3	19-S	26-E		330	NORTH	380	WEST	EDDY

Dedicated Acres	Joint or Infill	Consolidation Code	Order No.
159.06			

NO ALLOWABLE WILL BE ASSIGNED TO THIS COMPLETION UNTIL ALL INTERESTS HAVE BEEN CONSOLIDATED OR A NON-STANDARD UNIT HAS BEEN APPROVED BY THE DIVISION



#### OPERATOR CERTIFICATION

I hereby certify that the information herein is true and complete to the best of my knowledge and belief, and that this organization either owns a working interest or unleased mineral interest in the land including the proposed bottom hole location or has a right to drill this well at this location pursuant to a contract with an owner of such mineral or working interest, or to a voluntary pooling agreement or a compulsory pooling order heretofore entered by the division.

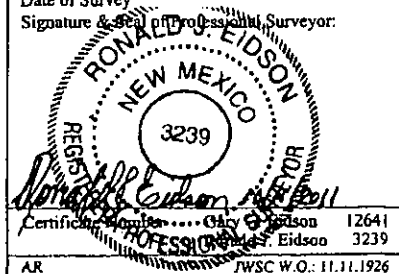
*Robyn M. Odom* 11/25/2013  
Signature Date  
Robyn M. Odom  
Printed Name  
Rodom@concho.com  
E-mail Address

#### SURVEYOR CERTIFICATION

I hereby certify that the well location shown on this plat was plotted from field notes of actual surveys made by me or under my supervision, and that the same is true and correct to the best of my belief.

SEPTEMBER 23, 2011

Date of Survey  
Signature & Seal of Professional Surveyor:



BEFORE THE OIL CONSERVATION  
DIVISION  
Santa Fe, New Mexico  
Exhibit No. 2  
Submitted by: COG Operating LLC  
Hearing Date: April 2, 2015