

**BEFORE THE OIL CONSERVATION DIVISION**

**APPLICATION OF WPX ENERGY PRODUCTION, LLC  
FOR COMPULSORY POOLING AND APPROVAL OF AN  
UNORTHODOX WELL LOCATION, SAN JUAN COUNTY,  
NEW MEXICO. CHACO 2408-33M NO. 120H**

**CASE NO. 15275**



District I  
1625 N. French Drive, Hobbs, NM 88240  
Phone: (575) 393-6161 Fax: (575) 393-0720

District II  
811 S. First Street, Artesia, NM 88210  
Phone: (575) 748-1283 Fax: (575) 748-9720

District III  
1000 Rio Brazos Road, Aztec, NM 87410  
Phone: (505) 334-6178 Fax: (505) 334-6170

District IV  
1220 S. St. Francis Drive, Santa Fe, NM 87505  
Phone: (505) 476-3460 Fax: (505) 476-3462

State of New Mexico  
Energy, Minerals & Natural Resources Department

Form C-102  
Revised August 1, 2011

Submit one copy to  
Appropriate District Office

OIL CONSERVATION DIVISION  
1220 South St. Francis Drive  
Santa Fe, NM 87505

☐ AMENDED REPORT

WELL LOCATION AND ACREAGE DEDICATION PLAT

*API Number		*Pool Code 97232	*Pool Name BASIN MANCOS
*Property Code	*Property Name CHACO 2408-33M		*Well Number 120H
*GRID No. 120782	*Operator Name WPX ENERGY PRODUCTION, LLC		*Elevation 7031'

<sup>10</sup> Surface Location

UL or Lot no.	Section	Township	Range	Lot 10n	Feet from the	North/South line	Feet from the	East/West line	County
M	33	24N	8W		1087	SOUTH	428	WEST	SAN JUAN

<sup>11</sup> Bottom Hole Location If Different From Surface

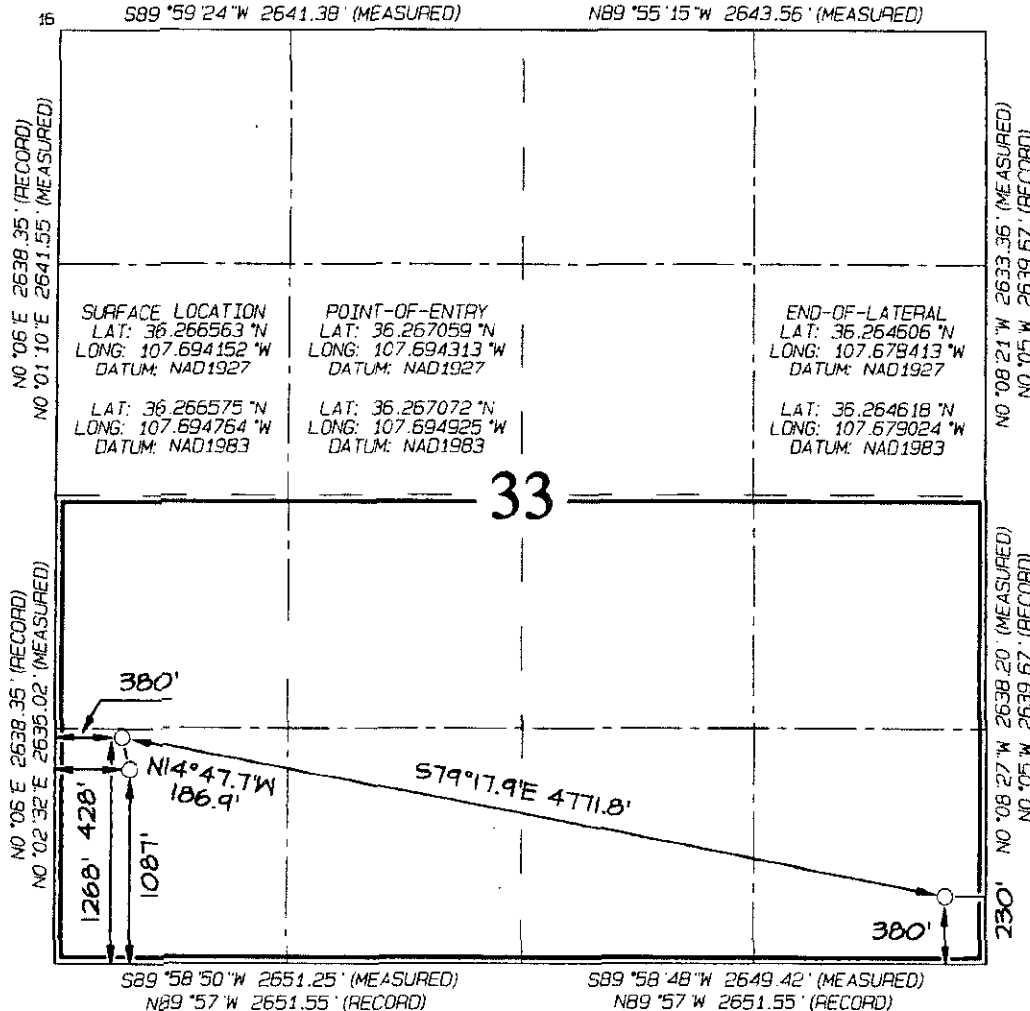
UL or Lot no.	Section	Township	Range	Lot 10n	Feet from the	North/South line	Feet from the	East/West line	County
P	33	24N	8W		380	SOUTH	230	EAST	SAN JUAN

<sup>12</sup> Dedicated Acres 320.0 Acres - S/2	<sup>13</sup> Joint or Infill	<sup>14</sup> Consolidation Code	<sup>15</sup> Order No.
--	-------------------------------	----------------------------------	-------------------------

NO ALLOWABLE WILL BE ASSIGNED TO THIS COMPLETION UNTIL ALL INTERESTS HAVE BEEN CONSOLIDATED OR A NON-STANDARD UNIT HAS BEEN APPROVED BY THE DIVISION

N89°59'W 2640.66' (RECORD)  
S89°59'24"W 2641.38' (MEASURED)

N89°59'W 2640.66' (RECORD)  
N89°55'15"W 2643.56' (MEASURED)



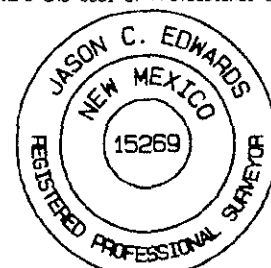
<sup>17</sup> OPERATOR CERTIFICATION  
I hereby certify that the information contained herein is true and complete to the best of my knowledge and belief, and that this organization either owns a working interest or unleased mineral interest in the land including the proposed bottom-hole location or has a right to drill this well at this location pursuant to a contract with an owner of such a mineral or working interest, or to a voluntary pooling agreement or a compulsory pooling order heretofore entered by the division.

Signature \_\_\_\_\_ Date \_\_\_\_\_  
Printed Name \_\_\_\_\_  
E-mail Address \_\_\_\_\_

<sup>18</sup> SURVEYOR CERTIFICATION  
I hereby certify that the well location shown on this plat was plotted from field notes of actual surveys made by me or under my supervision, and that the same is true and correct to the best of my belief.

Date Revised: FEBRUARY 25, 2015  
Survey Date: NOVEMBER 1, 2013

Signature and Seal of Professional Surveyor



JASON C. EDWARDS

BEFORE THE OIL CONSERVATION  
DIVISION

Santa Fe, New Mexico

Exhibit No. 1

Submitted by: WPX ENERGY PRODUCTION