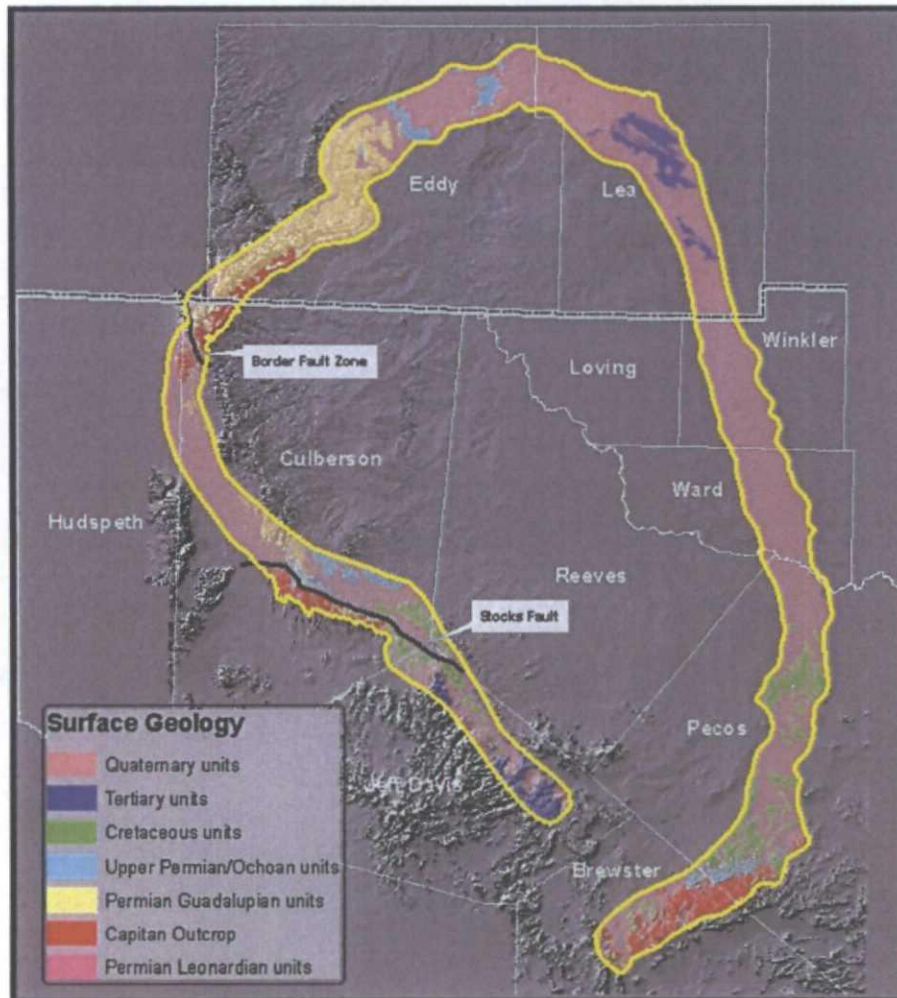


April 16, 2015

Fulfer/Driftwood Oil

EXHIBIT NO. 4

Capitan Reef Complex Structure and Stratigraphy



Report

by

Allan Standen, P.G.

Steve Finch, P.G.

Randy Williams, P.G.,

Beronica Lee-Brand, P.G.

Assisted by Paul Kirby

Texas Water Development Board

Contract Number 0804830794

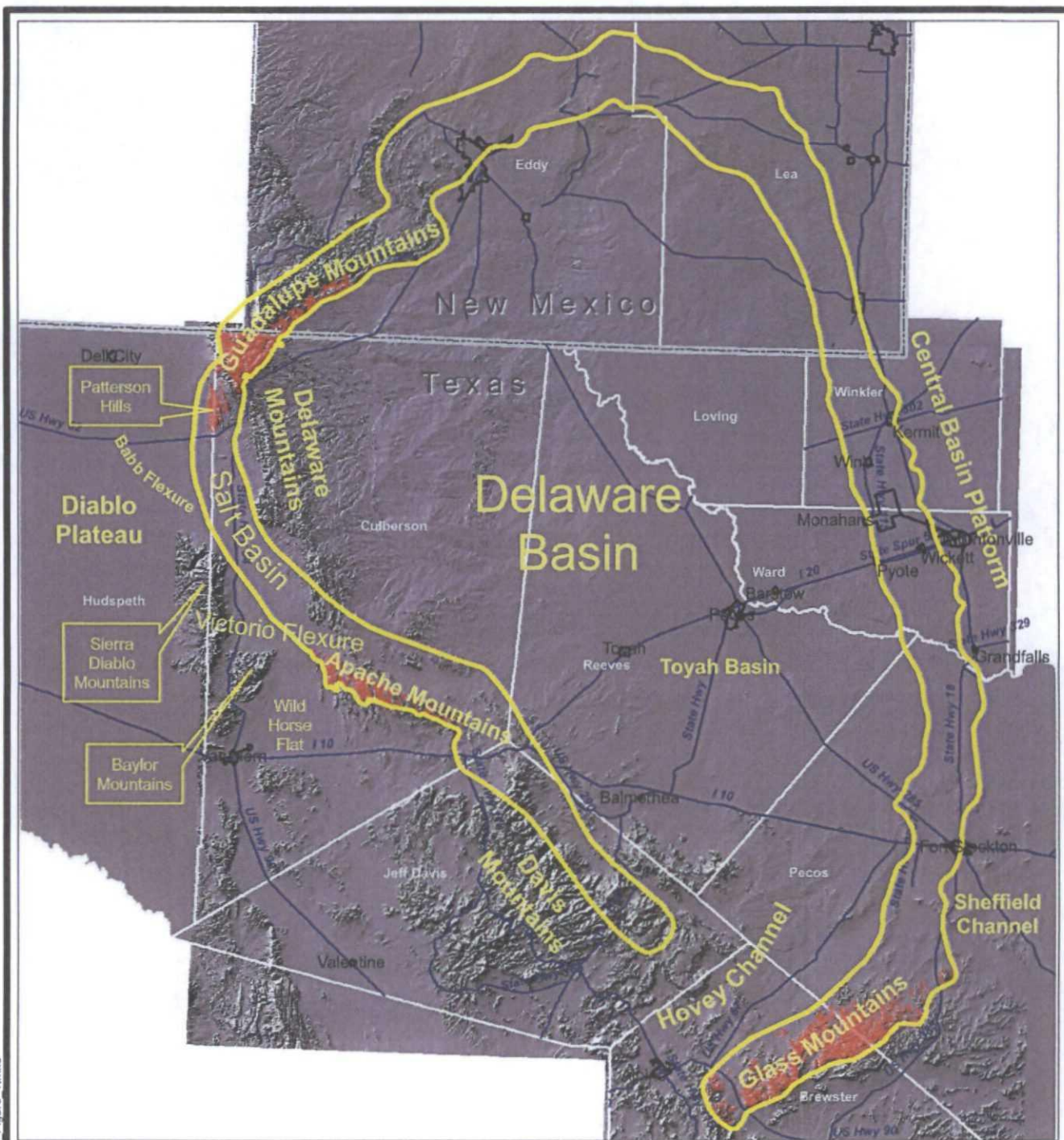
September 2009

NMOCD CASE NO.15262

April 16, 2015

Fulfer/Driftwood Oil





Explanation

- Capitan Reef Complex outline (revised)
- Capitan Reef Complex outcrop
- Cities
- Major roads
- Texas/New Mexico border
- County boundary

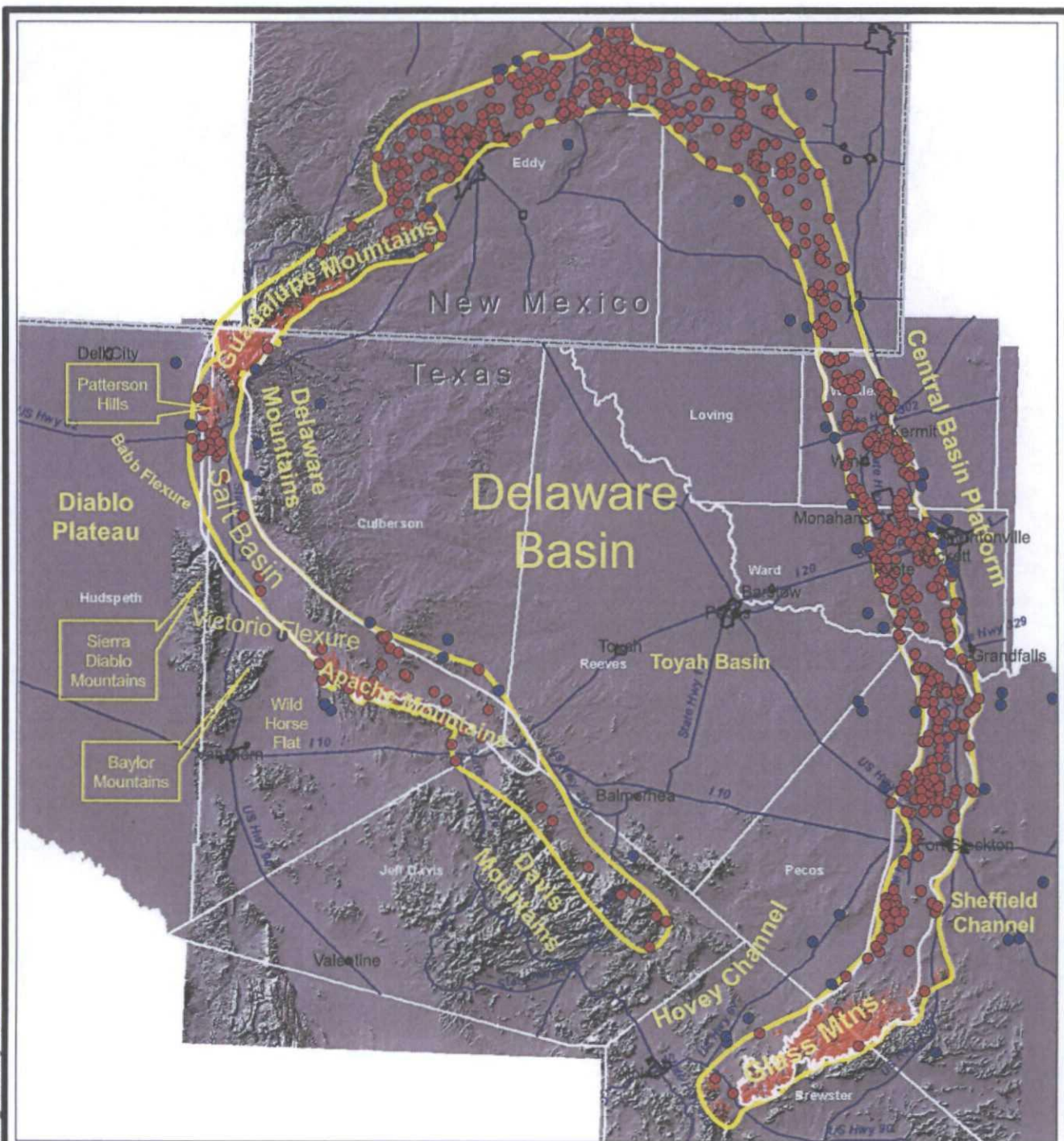


0 10 20 30
Miles

CAPITAN REEF COMPLEX Study Area and Geological Features

Figure 1





Explanation

- TWDB Capitan Reef Complex outline
- Capitan Reef Complex outline (revised)
- Capitan Reef Complex outcrop
- Cities
- Major roads
- Texas/New Mexico border
- County boundary

Capitan_Dataset

Capitan Present

- No
- Yes



0 10 20 30
Miles

**CAPITAN REEF COMPLEX
Compiled Well Locations**



Daniel B. Stephens & Associates, Inc.
08/28/2009 JN WR08.0039

Figure 7