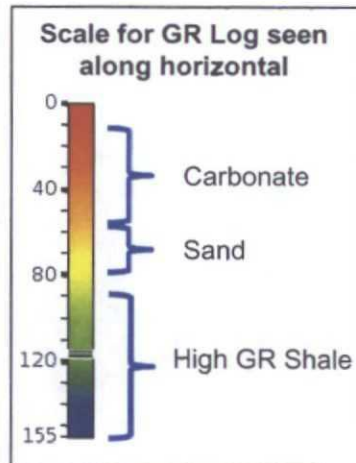
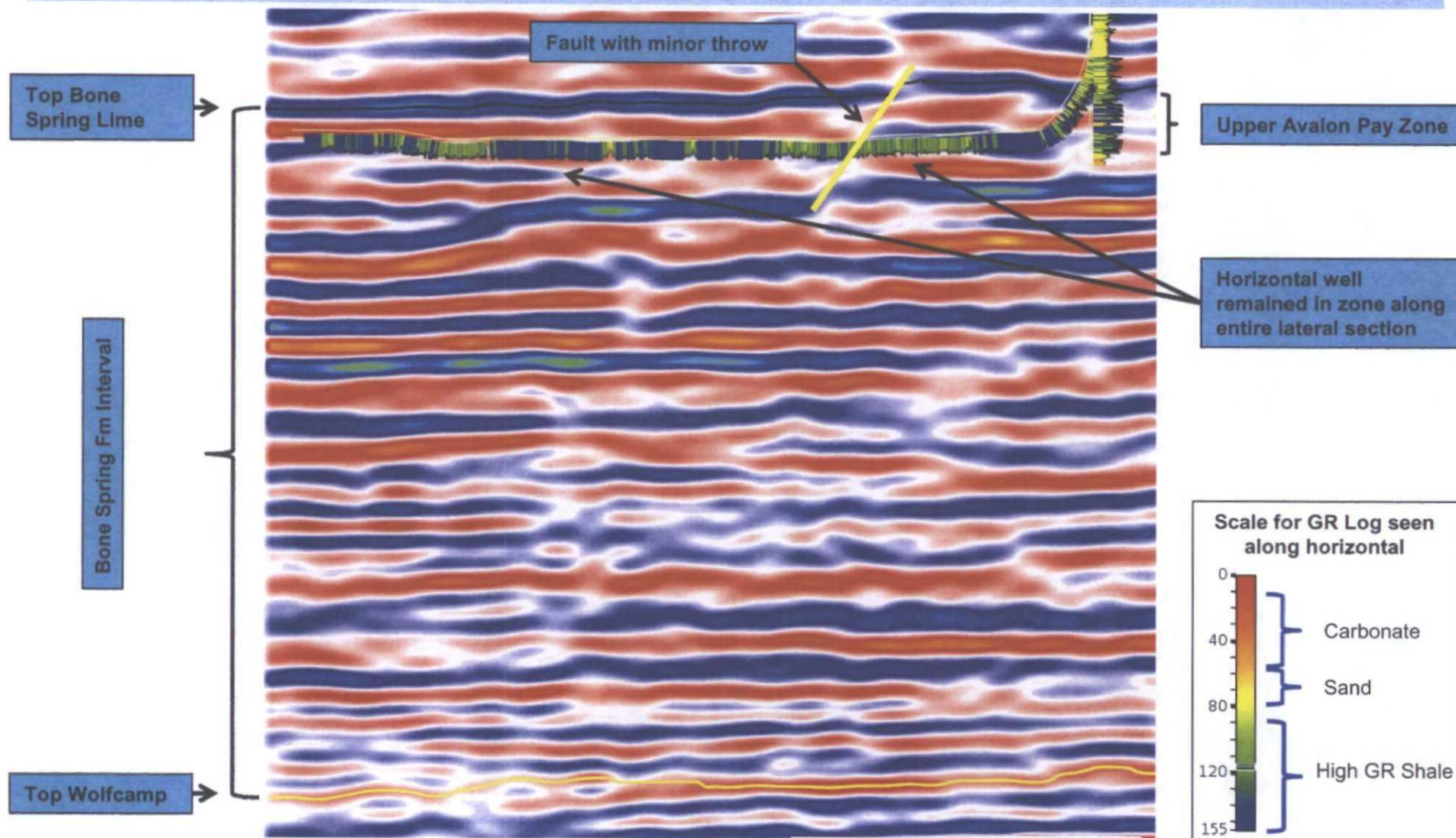


Seismic X-Section along Salado Draw 29 26 33 Fed Com 5H well path

Note: Entire Bone Spring Fm is displayed in seismic data



BEFORE THE OIL CONVERSION

DIVISION

Santa Fe, New Mexico

Exhibit No. 10

Submitted by: Chevron U.S.A. Inc.

Hearing Date: May 27, 2015