



COG OPERATING LLC

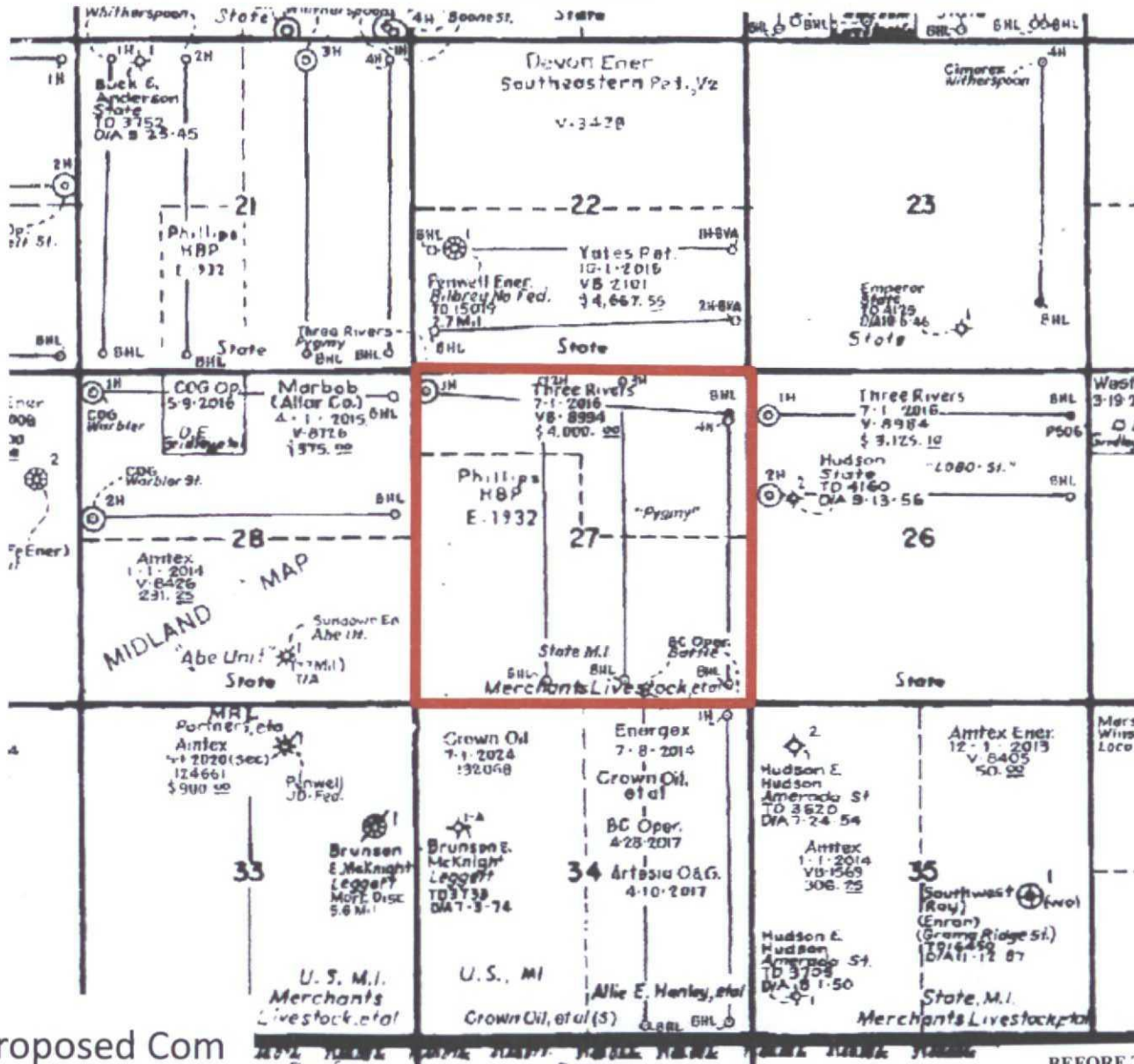
PYGMY LEASE

SECTION 27 – T21S – R33E

Lea County, New Mexico



Township 21 South, Range 33 East, Lea County, NM



Proposed Commercial Area

BEFORE THE OIL CONVERSION DIVISION
 Santa Fe, New Mexico
 Exhibit No. 1
 Submitted by: COG Operating LLC
 Hearing Date: May 27, 2015