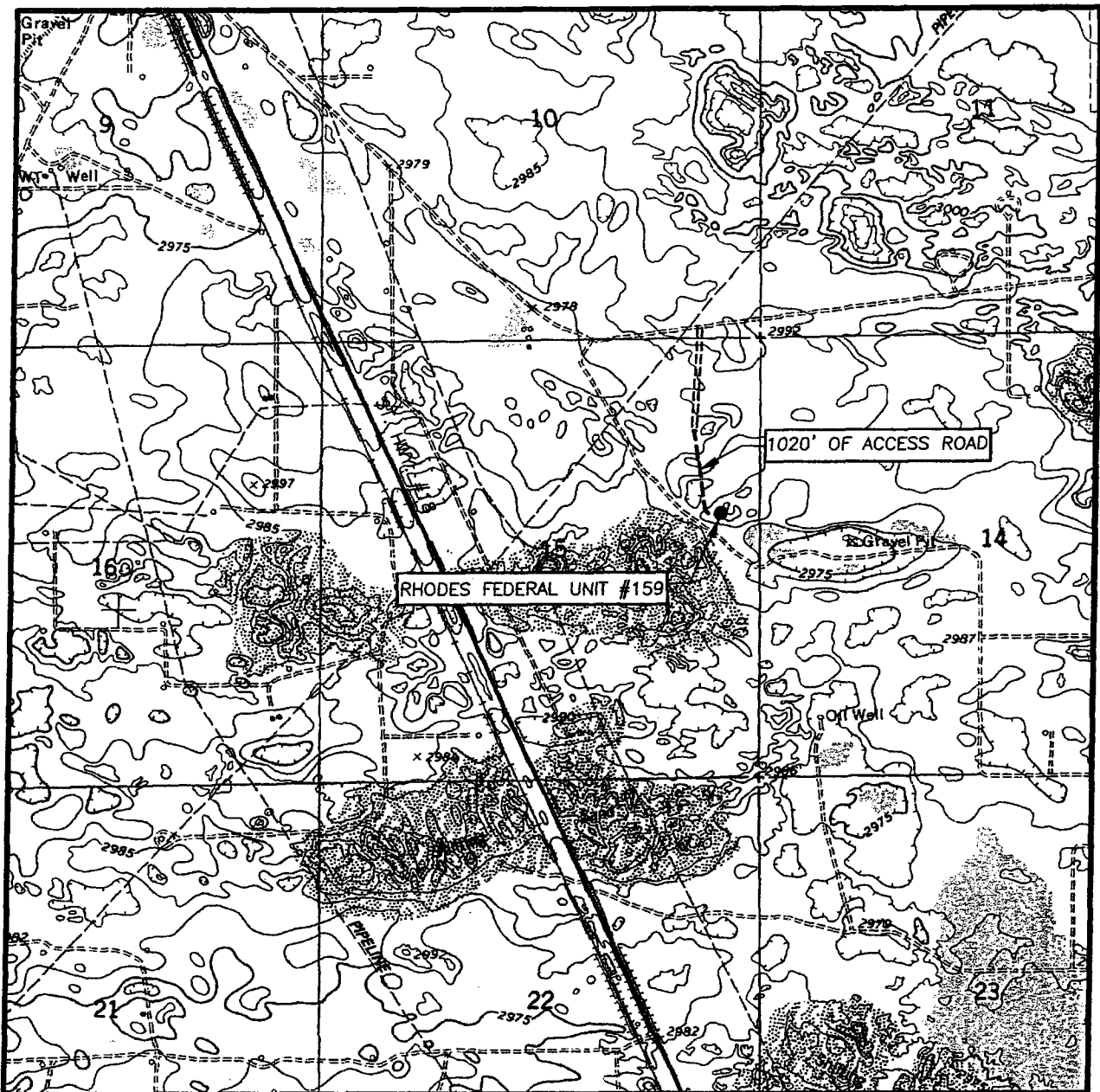


# LOCATION VERIFICATION MAP



SCALE: 1" = 2000'

CONTOUR INTERVAL:  
JAL, N.M. - 5'

SEC. 15 TWP. 26-S RGE. 37-E

SURVEY N.M.P.M.

COUNTY LEA

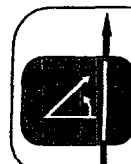
DESCRIPTION 2110' FNL & 460' FEL

ELEVATION 2988'

OPERATOR GRUY PETROLEUM  
MANAGEMENT COMPANY

LEASE RHODES FEDERAL UNIT

U.S.G.S. TOPOGRAPHIC MAP  
JAL, N.M.



PROVIDING SURVEYING SERVICES  
SINCE 1946

**JOHN WEST SURVEYING COMPANY**

412 N. DAL PASO  
HOBBS, N.M. 88240  
(505) 383-3117

BEFORE THE OIL CONSERVATION DIVISION  
Santa Fe, New Mexico

Case No. 13567-13572 Exhibit No. 3

Submitted by:

GRUY PETROLEUM MANAGEMENT CO.

Hearing Date: October 20, 2005