

Submit one copy to
Appropriate District Office

OIL CONSERVATION DIVISION
1220 South St. Francis Drive
Santa Fe, NM 87505

☐ AMENDED REPORT

WELL LOCATION AND ACREAGE DEDICATION PLAT

| | | | | | |
|----------------|--|----------------------------|--|-------------------------------|--------------|
| *API Number | | *Pool Code | | *Pool Name | |
| | | 97232 / 42269 | | BASIN MANCOS / LYBROOK GALLUP | |
| *Property Code | | *Property Name | | | *Well Number |
| | | CHACO 2307-07N | | | 410H |
| *OGRIID No. | | *Operator Name | | | *Elevation |
| 120782 | | WPX ENERGY PRODUCTION, LLC | | | 7307' |

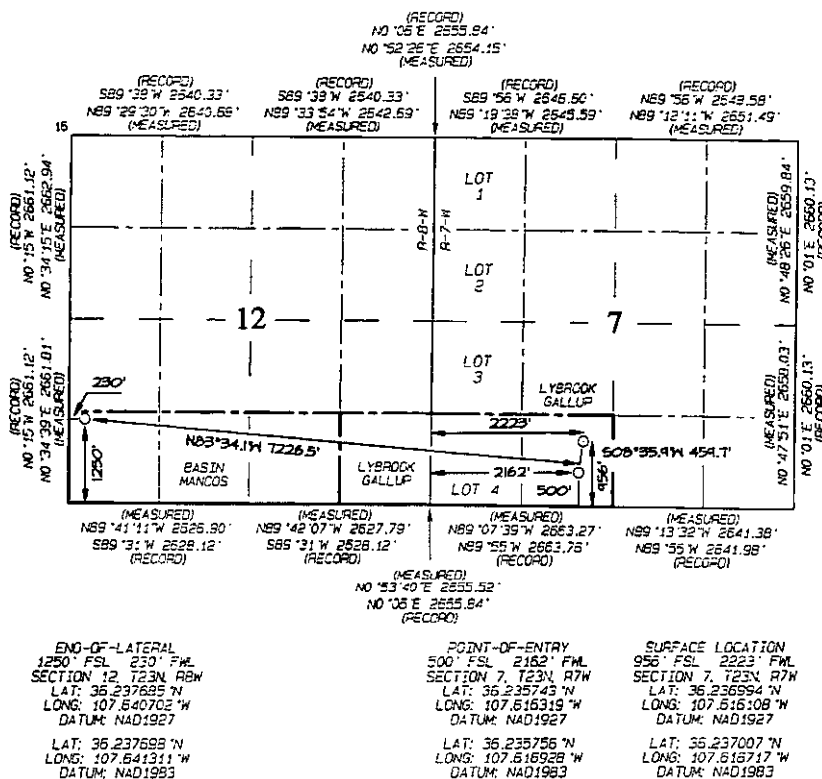
¹⁰ Surface Location

| | | | | | | | | | |
|---------------|---------|----------|-------|-----|---------------|------------------|---------------|----------------|------------|
| U. or lot no. | Section | Township | Range | Lot | Feet from the | North/South line | Feet from the | East/West line | County |
| N | 7 | 23N | 7W | 4 | 956 | SOUTH | 2223 | WEST | RIO ARriba |

¹¹ Bottom Hole Location If Different From Surface

| U. or lot no. | Section | Township | Range | Lot | Feet from the | North/South line | Feet from the | East/West line | County |
|--|---------|--|-------|-----|------------------------------|------------------|---------------------------------|----------------|------------------------|
| M | 12 | 23N | 8W | | 1250 | SOUTH | 230 | WEST | SAN JUAN |
| ^a Dedicated Acres 240.66 | | S/2 S/2 - Section 12 S/2 SW/4 - Section 7 | | | ^b Joint or Infill | | ^c Consolidation Code | | ^d Order No. |

NO ALLOWABLE WILL BE ASSIGNED TO THIS COMPLETION UNTIL ALL INTERESTS HAVE BEEN CONSOLIDATED OR A NON-STANDARD UNIT HAS BEEN APPROVED BY THE DIVISION



17 OPERATOR CERTIFICATION

I hereby certify that the information contained herein is true and complete to the best of my knowledge and belief, and that this organization either owns a working interest or unleased mineral interest in the land including the proposed bottom-hole location or has a right to drill this well at this location pursuant to a contract with an owner of such a mineral or working interest, or to a voluntary pooling agreement or a compulsory pooling order heretofore entered by the division.

Signature _____ Date _____

Printed Name _____

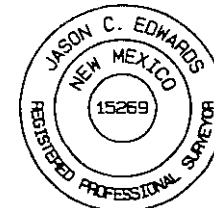
E-mail Address _____

18 SURVEYOR CERTIFICATION

I hereby certify that the well location shown on this plat was plotted from field notes of actual surveys made by me or under my supervision, and that the same is true and correct to the best of my belief.

Date Revised: JUNE 12, 2015
Date of Survey: JUNE 5, 2015

Signature and Seal of Professional Surveyor



JASON C. EDWARDS
Certificate Number 15269

BEFORE THE OIL CONVERSION DIVISION

Santa Fe, New Mexico

Exhibit No. 2

Submitted by: **WPX ENERGY PRODUCTION**

Hearing Date: November 12, 2015