

**Schlumberger** SIMULTANEOUS COMPENSATED NEUTRON FORMATION DENSITY

COMPANY ANTWEIL OIL COMPANY

WELL #1 COQUINA STATE

FIELD NORTH SAN SIMON YATES

COUNTY LEA STATE NEW MEXICO

1980' FHL C 660' FHL

Other Services: DLS, EPT

Permanent Datum: G.L. Elev. 3635

Log Measured From: R.B. 13 Ft Above Perm. Datum

Drilling Measured From: R.B. G. 3634

**Schlumberger** SIMULTANEOUS COMPENSATED NEUTRON FORMATION DENSITY

COMPANY ANTWEIL OIL COMPANY

WELL #1 DIAMOND

FIELD NORTH SAN SIMON YATES

COUNTY LEA STATE NEW MEXICO

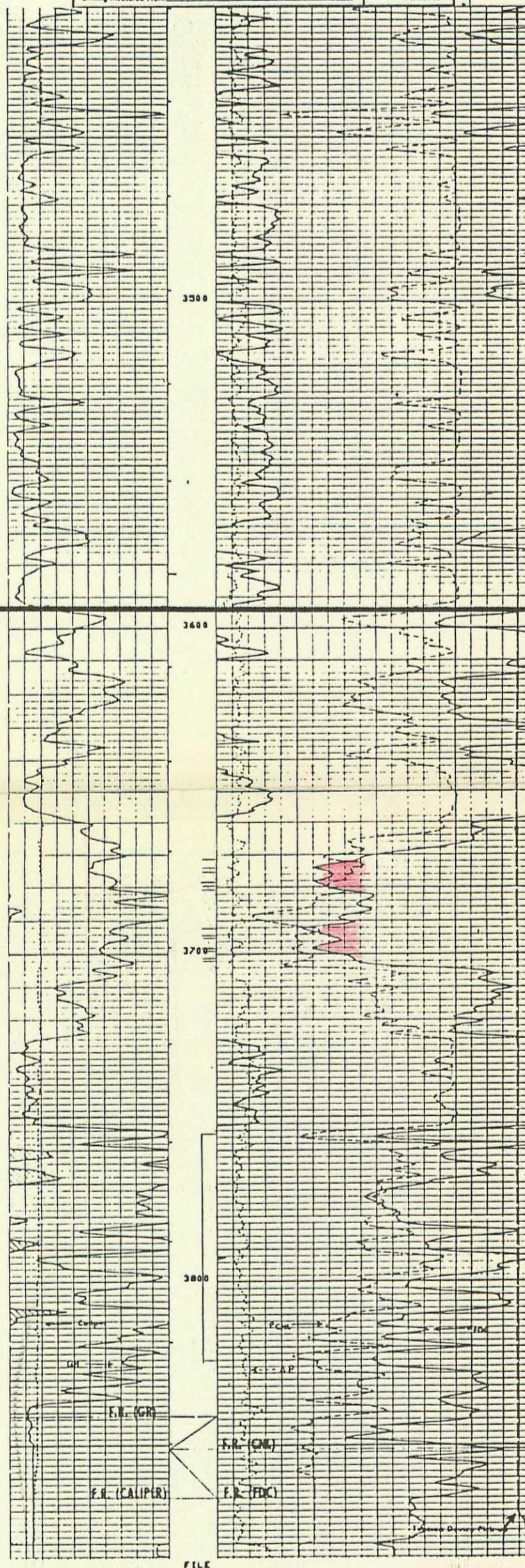
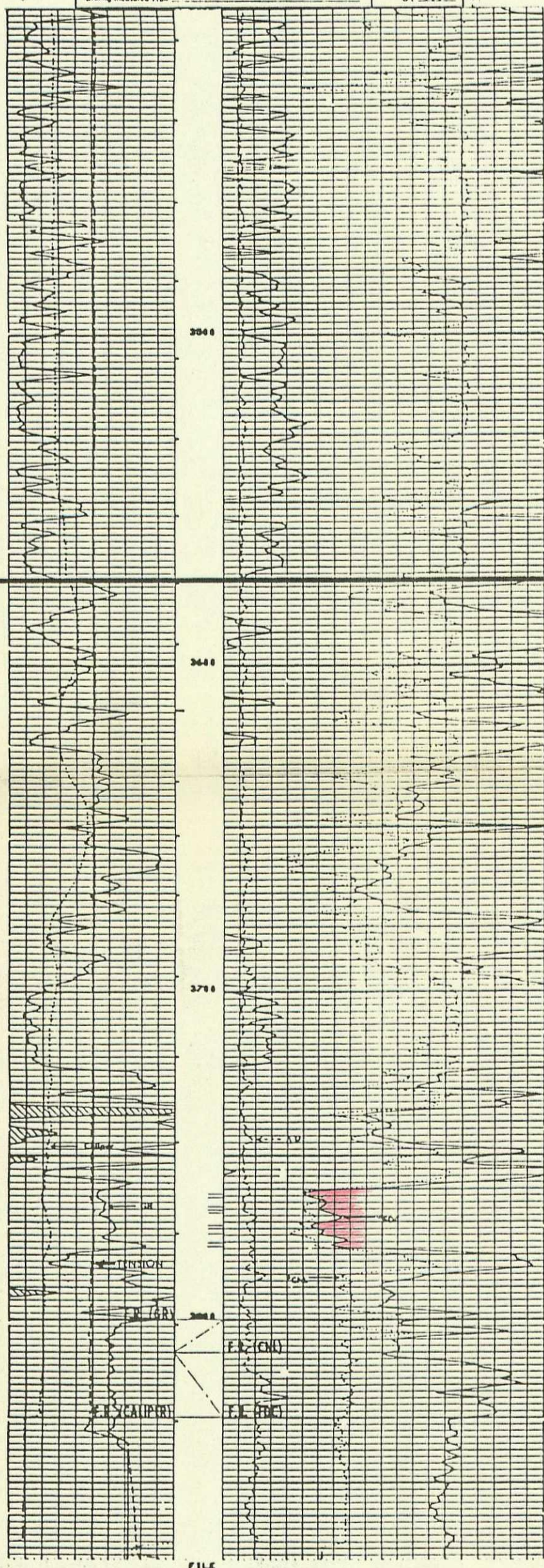
1980' FHL C 660' FHL

Other Services: DLS, EPT

Permanent Datum: G.L. Elev. 3631

Log Measured From: R.B. 13 Ft Above Perm. Datum

Drilling Measured From: R.B. G. 3631



Correlation Section between  
Antweil's #1 Coquina and #1 Diamond Wells

BEFORE EXAMINER STAMETS  
OIL CONSERVATION DIVISION

Antweil/EXHIBIT NO. 3

CASE NO. 7976

Submitted by Williams

Hearing Date 12 Oct 83

ANTWEIL OIL COMPANY  
Hobbs, New Mexico

NORTH SAN SIMON YATES  
Lea County, New Mexico  
OCTOBER 1983