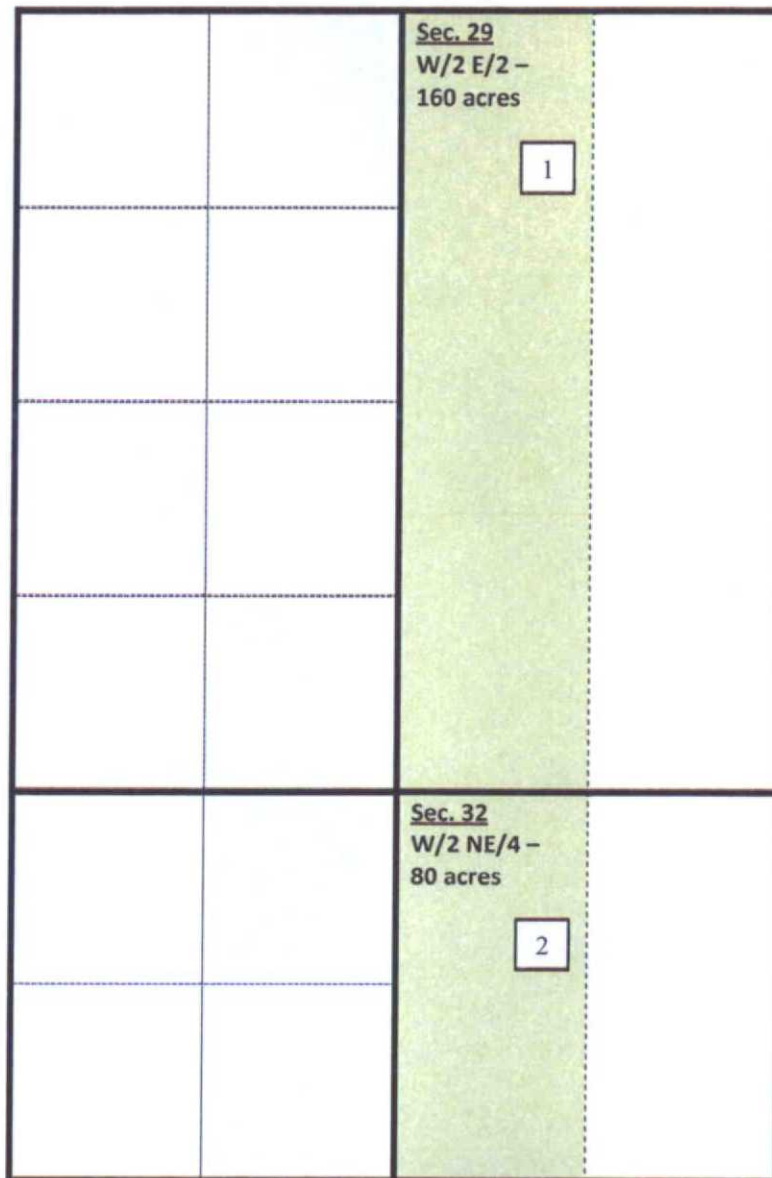


**VIKING HELMET STATE COM #2H**  
**T24S-R35E- W/2 E/2 OF SECTION 29, W/2 NE/4 OF SECTION 32**  
**LEA COUNTY, NM**



**VIKING HELMET STATE COM #2H  
T24S-R35E- W/2 E/2 OF SECTION 29, W/2 NE/4 OF SECTION 32  
LEA COUNTY, NM**

Tract 1 - W/2 E/2 of Section 29 (160 acres)

COG Operating LLC – 83.125%

**Chevron U.S.A., Inc. (UNLEASED) – 12.5%**

**Katherine Ross Madera Sharbutt (UNLEASED) – 4.375%**

Tract 5 - W/2 NE/4 of Section 32 (80 acres)

COG Operating LLC – 100%

UNIT RECAPITULATION T24S-R35E-Section 29: W/2 E/2 & Section 32: W/2 NE/4

COG Operating LLC – 88.750000%

**Chevron U.S.A., Inc. – 8.333333%**

**Katherine Ross Madera Sharbutt – 2.916667%**

**Uncommitted owners in proposed non-standard spacing units.**