

District I  
1625 N. Freach Dr., Hobbs, NM 88240  
Phone: (575) 393-6161 Fax: (575) 393-0720  
District II  
811 S. First St., Artesia, NM 88210  
Phone: (575) 741-1283 Fax: (575) 741-9720  
District III  
1000 Rio Brazos Road, Aztec, NM 87410  
Phone: (505) 334-6178 Fax: (505) 334-6170  
District IV  
1220 S. St. Francis Dr., Santa Fe, NM 87505  
Phone: (505) 476-3460 Fax: (505) 476-3462

State of New Mexico  
Energy Minerals and Natural Resources  
Oil Conservation Division  
1220 South St. Francis Dr. OCT 22 2014  
Santa Fe, NM 87505

Form C-101  
Revised July 13, 2013

☐ AMENDED REPORT

RECEIVED

APPLICATION FOR PERMIT TO DRILL, RE-ENTER, DEEPEN, PLUGBACK, OR ADD A ZONE

Operator Name and Address Sovereign Eagle LLC PO Box 1030, Roswell, NM 88202		OGRID Number 263940
		API Number 30-041-20965
Property Code 306460	Property Name StoltenBerg	Well No. 2

7. Surface Location

UL - Lot	Section	Township	Range	Lot Idn	Feet from	N/S Line	Feet From	E/W Line	County
F	26	2S	29E		1650	N	2260	W	Roosevelt

8. Proposed Bottom Hole Location

UL - Lot	Section	Township	Range	Lot Idn	Feet from	N/S Line	Feet From	E/W Line	County
F	26	2S	29E		1650	N	2260	W	Roosevelt

9. Pool Information

Pool Name Tule Montoya/Penn	Pool Code 86442/86443
--------------------------------	--------------------------

Additional Well Information

Work Type N	Well Type Gas	Cable/Rotary Rotary	Lease Type Fee	Ground Level Elevation 4394'
Multiple Yes	Proposed Depth 7290'	Formation Montoya	Contractor Silver Oak	Spud Date 10/25/2014
Depth to Ground water >100'	Distance from nearest fresh water well > 1 mile		Distance to nearest surface water > 1 mile	

☒ We will be using a closed-loop system in lieu of lined pits

21. Proposed Casing and Cement Program

Type	Hole Size	Casing Size	Casing Weight/ft	Setting Depth	Sacks of Cement	Estimated TOC
Surface	17 1/2"	13 3/8"	48#	331'	250	Circulated
Int.	11"	8 5/8"	24#	2340'	700	Circulated
Prod.	7 7/8"	5 1/2"	17#	7290'	1500	Circulated

Casing/Cement Program: Additional Comments

22. Proposed Blowout Prevention Program

Type	Working Pressure	Test Pressure	Manufacturer
Double Ram	2000	1000	

23. I hereby certify that the information given above is true and complete to the best of my knowledge and belief.  
I further certify that I have complied with 19.15.14.9 (A) NMAC ☒ and/or 19.15.14.9 (B) NMAC ☒ if applicable

Signature: *Paul Ragsdale*

Printed name: Paul Ragsdale

Title: Operations Manager

E-mail Address: pragsdale@stratanm.com

Date: 10/22/2012

Phone:

OIL CONSERVATION DIVISION

Approved By: *[Signature]*

Title: Petroleum Engineer

Approved Date: 10/24/14

Expiration Date: 10/24/16

NMOCD CASE NO. 15224  
December 4, 2014  
Sovereign Eagle, LLC  
Exhibit No. 1

Proval

OCT 23 2014

# CONDITIONS OF APPROVAL

API #	Operator	Well name & Number
30-041-20965	Sovereign Eagle LLC	Stoltenberg # 2

Applicable conditions of approval marked with XXXXXX

## Administrative Orders Required

XXXXXXX	Will require administrative order for non-standard location prior to placing the well on production

Other wells

--	--

## Drilling

XXXXXXX	Once the well is spud, to prevent ground water contamination through whole or partial conduits from the surface, the operator shall drill without interruption through the fresh water zone or zones and shall immediately set in cement the water protection string

## Casing

XXXXXXX	SURFACE & INTERMEDIATE(1) CASING - Cement must circulate to surface --
XXXXXXX	PRODUCTION CASING - Cement must circulate to surface --
XXXXXXX	If cement does not circulate to surface, must run temperature survey or other log to determine top of cement

District I  
1625 N. French Dr., Hobbs, NM 88240  
District II  
1301 W. Grand Avenue, Artesia, NM 88210  
District III  
1000 Rio Brazos Rd., Aztec, NM 87410  
District IV  
1220 S. St. Francis Dr., Santa Fe, NM 87505

State of New Mexico  
Energy, Minerals & Natural Resources Department  
**OIL CONSERVATION DIVISION**  
1220 South St. Francis Dr.  
Santa Fe, NM 87505

HOBBS OCD

OCT 22 2014

Form C-102

Revised July 16, 2010

Submit one copy to appropriate

District Office

☐ AMENDED REPORT

RECEIVED

**WELL LOCATION AND ACREAGE DEDICATION PLAT**

<sup>1</sup> API Number <b>30-041-20965</b>		<sup>2</sup> Pool Code <b>86442</b>	<sup>3</sup> Pool Name <b>Tule - Montoya (Gas)</b>
<sup>4</sup> Property Code <b>306460</b>	<sup>5</sup> Property Name <b>Stoltenberg</b>		<sup>6</sup> Well Number <b>2</b>
<sup>7</sup> OGRID No. <b>263940</b>	<sup>8</sup> Operator Name <b>Sovereign Eagle, LLC</b>		<sup>9</sup> Elevation <b>3307</b>

<sup>10</sup> Surface Location

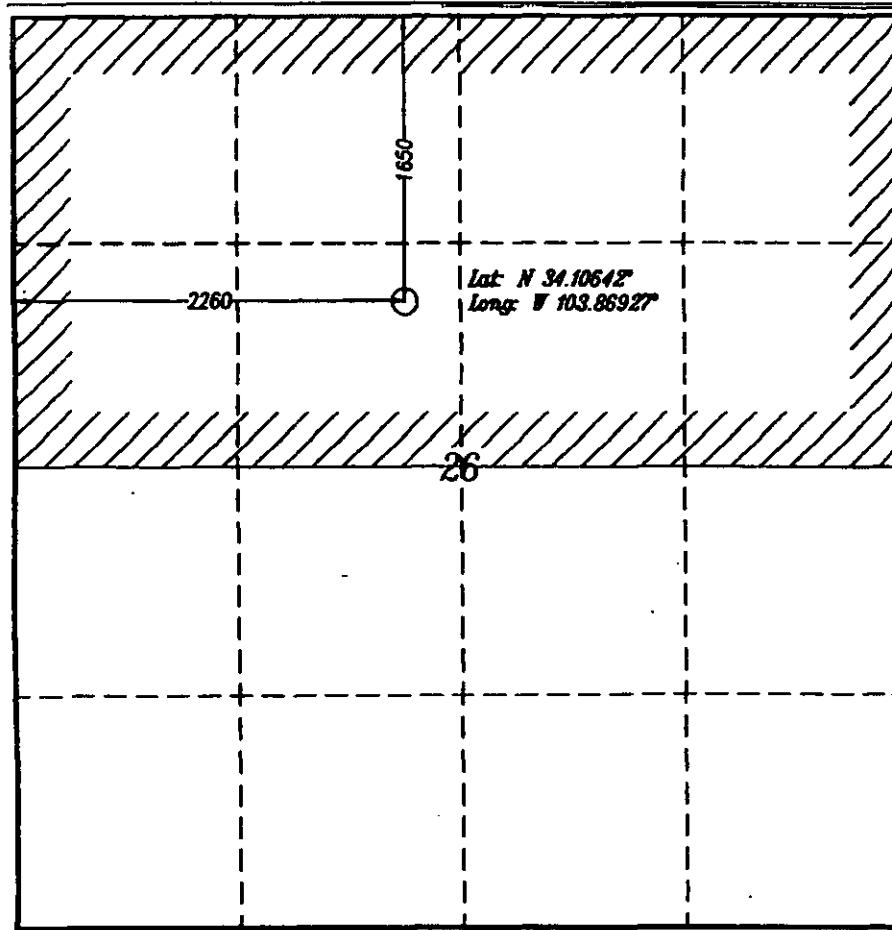
UL or lot no.	Section	Township	Range	Lot ldn	Feet from the	North/South line	Feet from the	East/West line	County
<b>F</b>	<b>26</b>	<b>2 S</b>	<b>29 E</b>		<b>1650</b>	<b>North</b>	<b>2260</b>	<b>West</b>	<b>Roosevelt</b>

<sup>11</sup> Bottom Hole Location If Different From Surface

UL or lot no.	Section	Township	Range	Lot ldn	Feet from the	North/South line	Feet from the	East/West line	County

<sup>12</sup> Dedicated Acres <b>320</b>	<sup>13</sup> Joint or Infill	<sup>14</sup> Consolidation Code	<sup>15</sup> Order No.
---	-------------------------------	----------------------------------	-------------------------

No allowable will be assigned to this completion until all interests have been consolidated or a non-standard unit has been approved by the division.



<sup>17</sup> OPERATOR CERTIFICATION

I hereby certify that the information contained herein is true and complete to the best of my knowledge and belief, and that this organization either owns a working interest or undivided mineral interest in the land including the proposed bottom hole location or has a right to drill this well at this location pursuant to a contract with an owner of such a mineral or working interest, or to a voluntary pooling agreement or a compulsory pooling order heretofore entered by the division.

Signature: *Paul Ragdale* Date: *10/21/14*

Printed Name: **PAUL RAGDALE**

E-mail Address: *pragdale@stetannm.com*

<sup>18</sup> SURVEYOR CERTIFICATION

I hereby certify that the well location shown on this plat was plotted from field notes of actual surveys made by me or under my supervision, and that the same is true and correct to the best of my belief.

Date of Survey: **October 20, 2014**

Signature and Seal of Professional Surveyor:

*[Signature]*  
Certificate Number **8112**

OCT 23 2014