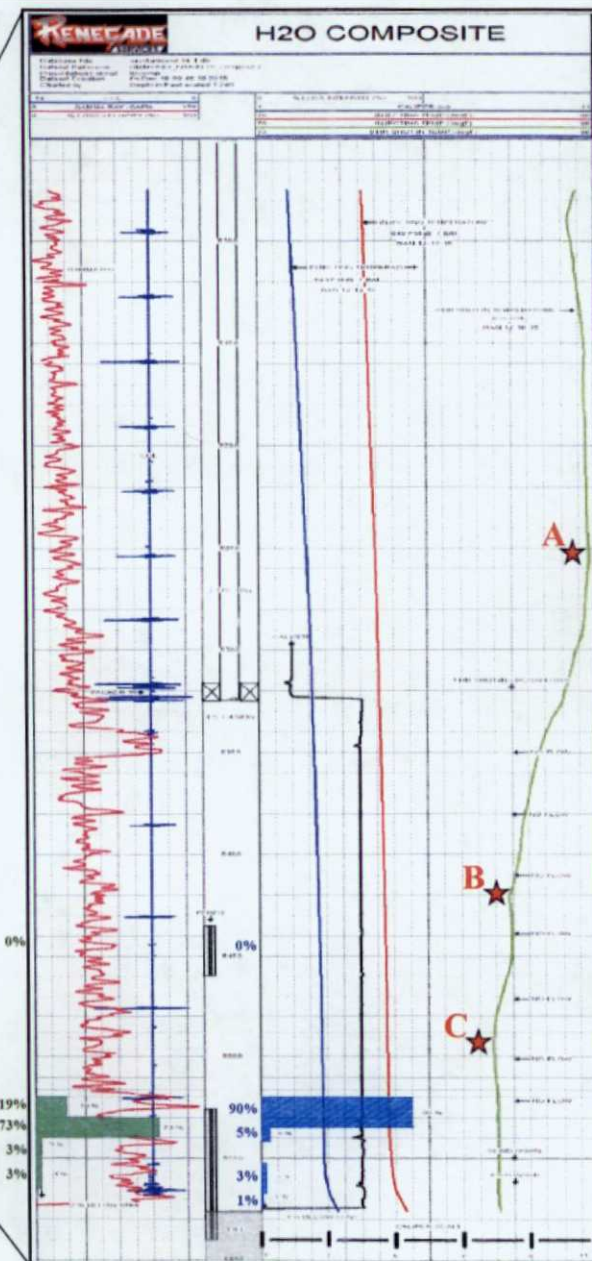
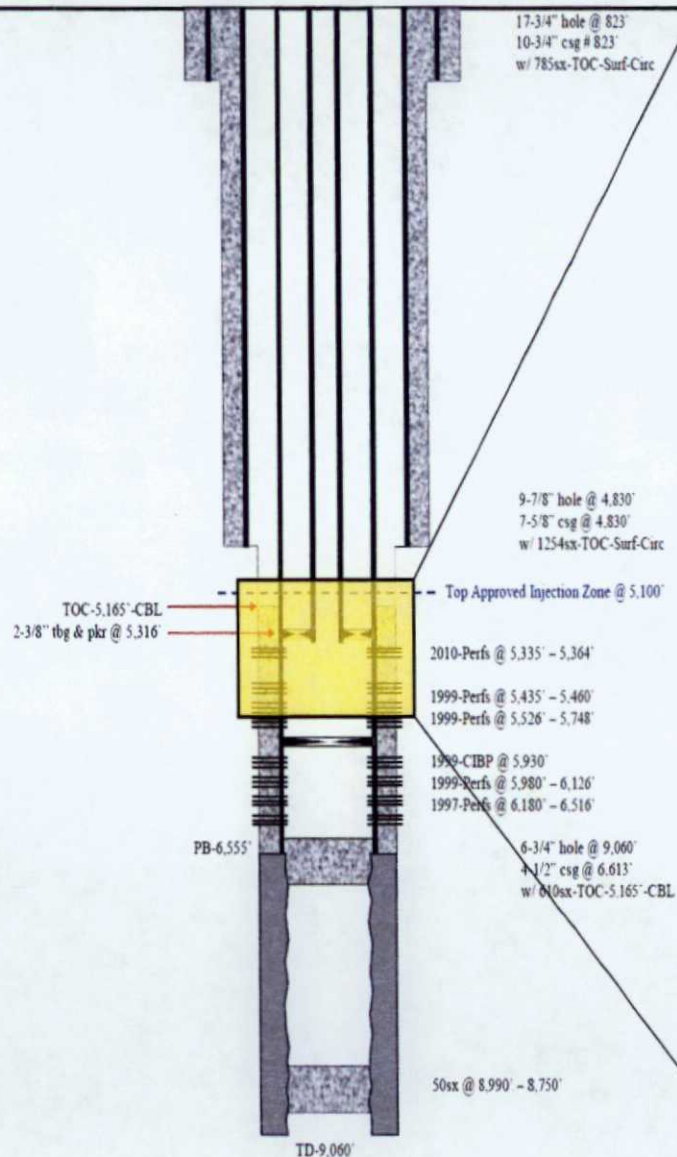


Radioactive Tracer Survey

BEFORE THE OIL CONVERSION
DIVISION
Santa Fe, New Mexico
Exhibit No. 13
Submitted by: OXY USA Inc.
Hearing Date: March 29, 2016

OXY USA Inc.
Diamond 34 State #1
API No. 30-025-33387



H₂O Composite Survey:

- Injection test run @ 0.7 bbl/min & 890 psi
- Virtually all injected fluid entering formation @ 5,520' to 5,576' ("active" perforations)

Reference Point "A"

Temperature: 89.6 °F

Depth: 5,254'

Depth Reference: Above injection perforations & below permitted interval top

"Insulation" Layers: Tubing, inert packer fluid, casing, & cement

Reference Point "B"

Temperature: 84.8 °F

Depth: 5,410'

Depth Reference: Within injection perforations but above "active" perforations (perforations taking injected fluid)

"Insulation" Layers: Casing & cement

Reference Point "C"

Temperature: 83.8 °F

Depth: 5,492'

Depth Reference: Within injection perforations & near "active" perforations (perforations taking injected fluid)

"Insulation" Layers: Casing & cement