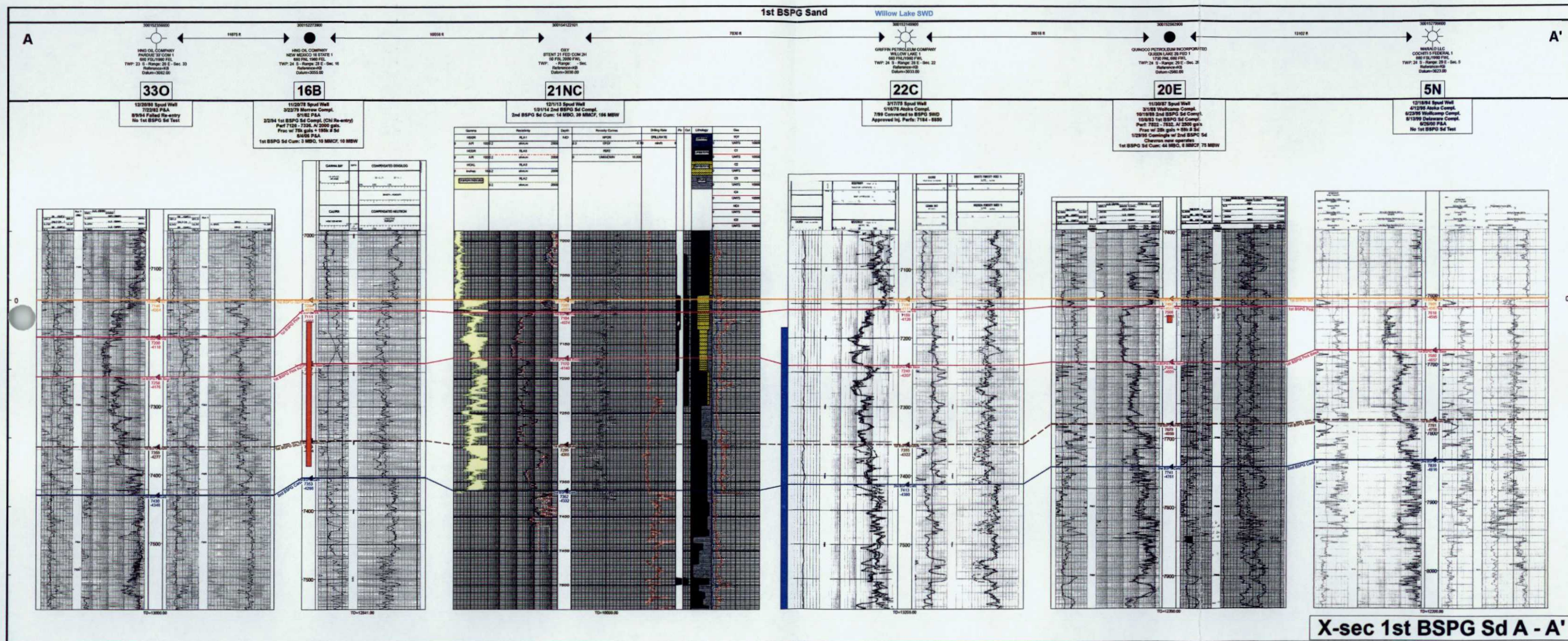


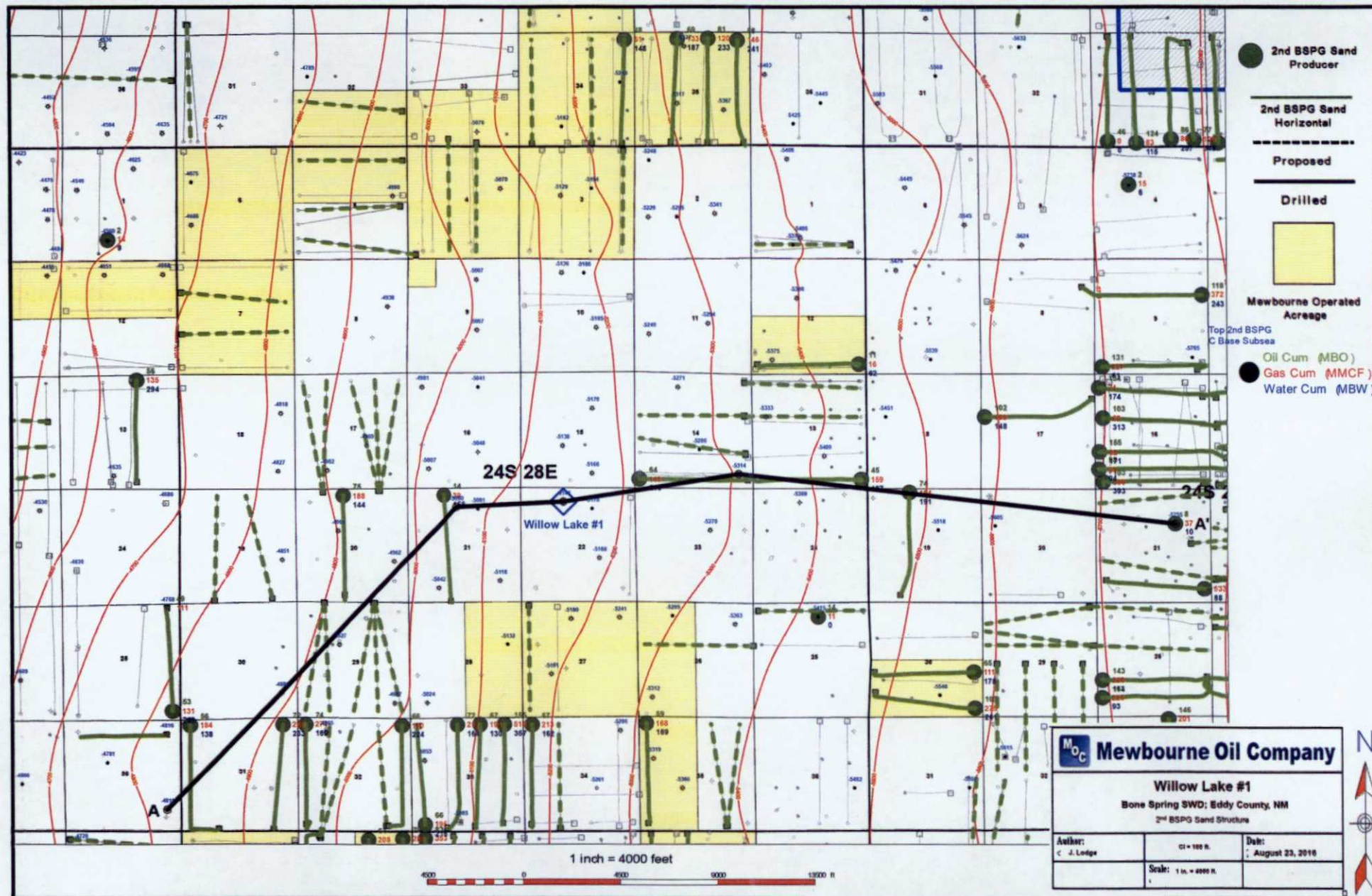
MOC Mewbourne Oil Company

Willow Lake #1
Bone Spring SWD; Eddy County, NM
1st BSPG Sand Structure

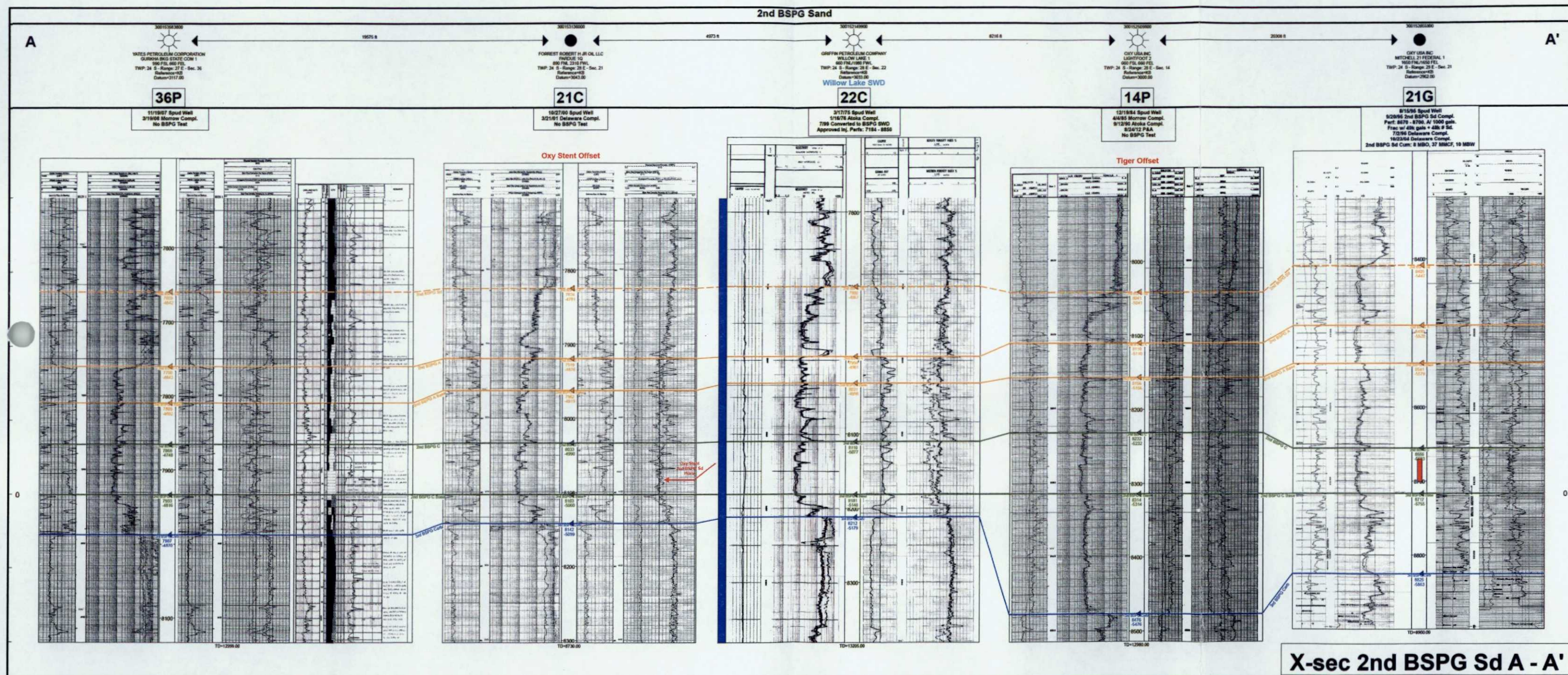
Author: J. Lodge	Scale: 1 in. = 4000 ft.	Date: August 23, 2016
---------------------	----------------------------	--------------------------

BEFORE THE OIL CONSERVATION DIVISION
Santa Fe, New Mexico
Exhibit No. 8
Submitted by:
MEWBOURNE OIL COMPANY
Hearing Date: September 29, 2016





BEFORE THE OIL CONSERVATION DIVISION
 Santa Fe, New Mexico
 Exhibit No. 10
 Submitted by:
MEWBOURNE OIL COMPANY
 Hearing Date: September 29, 2016



BEFORE THE OIL CONSERVATION DIVISION
 Santa Fe, New Mexico
 Exhibit No. 11
 Submitted by:
MEWBOURNE OIL COMPANY
 Hearing Date: September 29, 2016