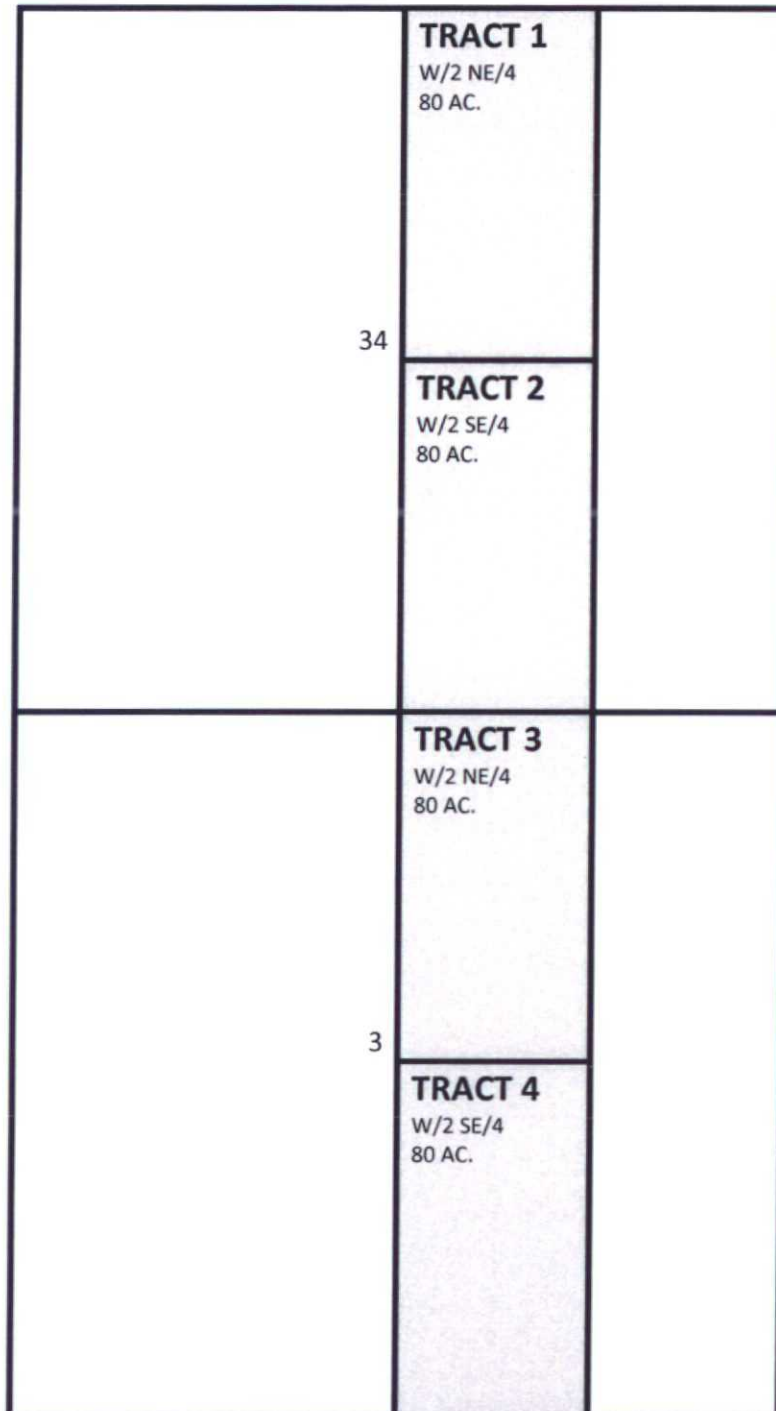


COLUMBUS FEE #23H &24H
T25S-R33E-Section 34, W/2 E/2
T26S-R33E-Section 3, W/2 E/2
Lea County, NM



Tract 1: W/2 NE/4 Section 34-T25S-R33E

COG Operating LLC	40.56%
Concho Oil & Gas LLC	13.53%
Bradley S. Bates	2.669%
MECO IV, LLC	1.501%
Sagebrush Interests, LLC	1.50%
RSC Resources, L.P.	7.01%
MRC Permian Company	22.31%
<u>Magnum Producing, LP</u>	<u>10.92%</u>
Total	100.0%

Tract 2: W/2 SE/4 Section 34-T25S-R33E

COG Operating LLC	37.93%
Concho Oil & Gas LLC	6.08%
Bradley S. Bates	1.19%
MECO IV, LLC	0.68%
Sagebrush Interests, LLC	0.68%
RSC Resources, L.P.	3.15%
RGH Land, Inc.	3.91%
Tonkin Mineral Interests, LLC	22.31%
J. Hiram Moore, Ltd.	2.23%
Houston Arts Combined Endowment Fund	10.92%
<u>R&R Royalty, Ltd.</u>	<u>10.92%</u>
Total	100.0%

Tract 3: W/2 NE/4 Section 3-T26S-R33E

COG Operating LLC	60.75%
Concho Oil & Gas LLC	20.25%
Bradley S. Bates	4.000%
MECO IV, LLC	2.250%
Sagebrush Interests, LLC	2.250%
<u>RSC Resources, L.P.</u>	<u>10.50%</u>
Total	100.0%

Tract 4: W/2 SE/4 Section 3-T26S-R33E

COG Operating LLC	60.75%
Concho Oil & Gas LLC	20.25%
Bradley S. Bates	4.000%
MECO IV, LLC	2.250%
Sagebrush Interests, LLC	2.250%
<u>RSC Resources, L.P.</u>	<u>10.50%</u>
Total	100.00

UNIT RECAPITULATION

T25S-R33E-Section 34, W/2 E/2

T26S-R33E-Section 3, W/2 E/2

COG Operating LLC	49.99%
Concho Oil & Gas LLC	15.02%
Bradley S. Bates	2.97%
MECO IV, LLC	1.67%
Sagebrush Interests, LLC	1.67%
RSC Resources L.P.	7.79%
MRC Permian Company	5.58%
RGH Land, Inc.	0.98%
<i>Magnum Producing, LP</i>	2.73%
<i>Tonkin Mineral Interests, LLC</i>	5.58%
<i>J. Hiram Moore, Ltd.</i>	0.56%
<i>Houston Arts Combined Endowment Fund</i>	2.73%
<u><i>R&R Royalty, Ltd.</i></u>	2.73%
Total:	100.0%

Interests seeking to Compulsory Pool