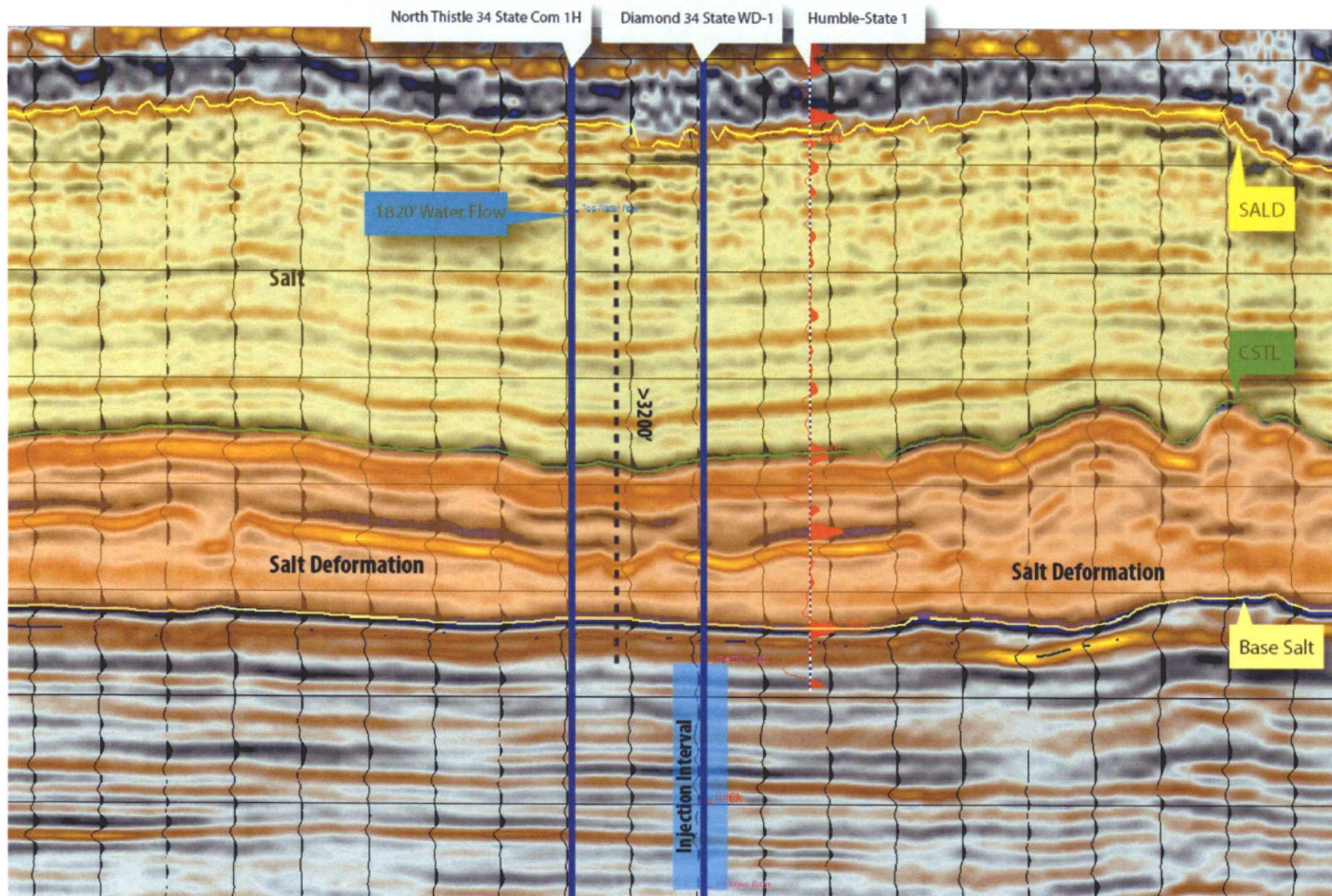


Seismic Cross Section

Arbitrary line drawn in a west to east orientation



- Injection interval is overlain by massive salt structures composed by Ochoan evaporative sequences of the Salado, Castile, and Rustler Formations.
 - Vertical section of salt in excess of 3,200' serves as an effective and geologically sound seal.
 - Water requires a conduit to migrate through impermeable salt, and it is proposed that the Diamond 34 State WD-1 is providing this pathway.
 - Salt karstification due to dissolution or mobilization of salt by excess water is a risk.
 - Potential for surface collapse features evident by nearby San Simon Sink.

Oil Conservation Division
Case No. _____
Exhibit No. _____