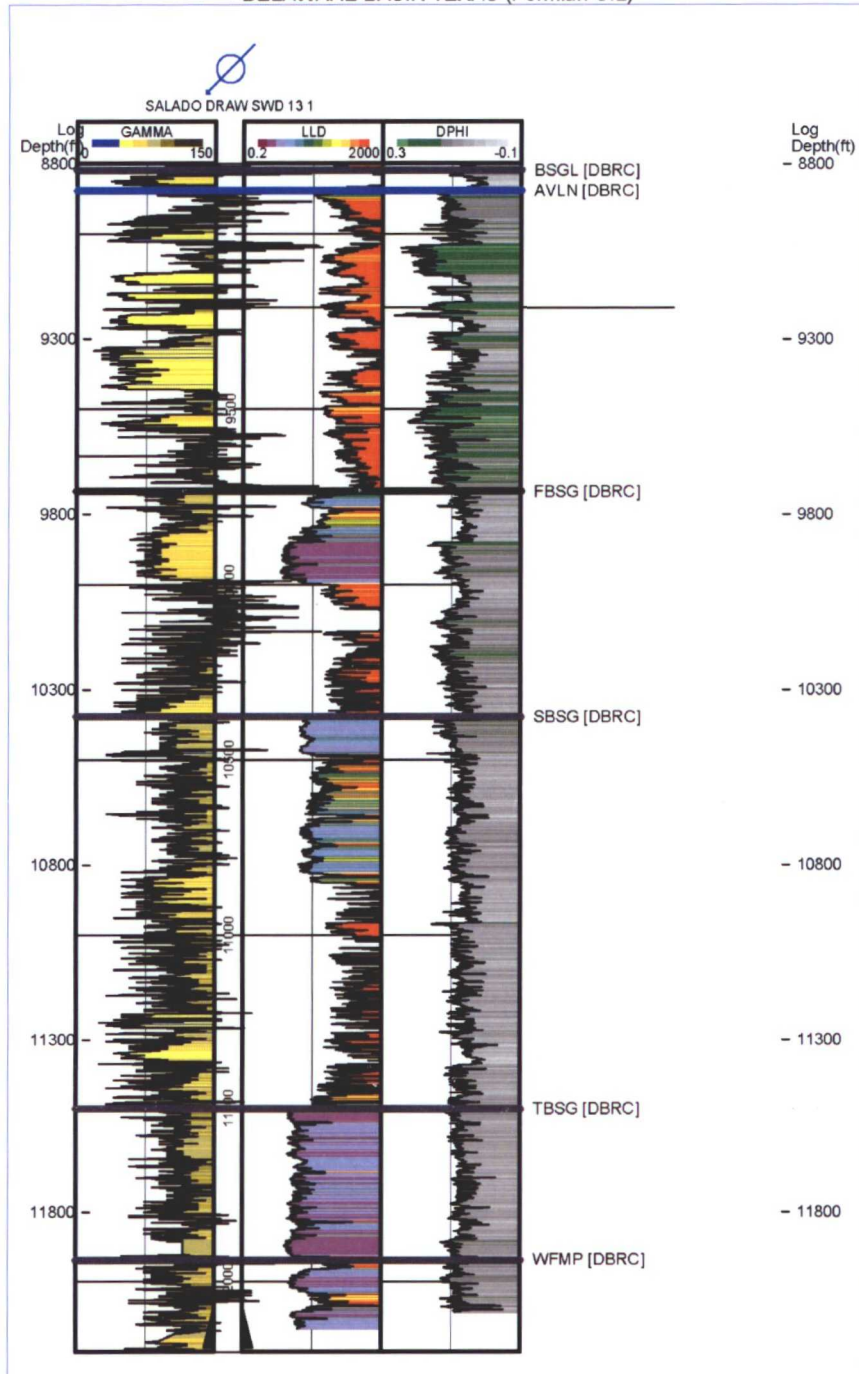


EXHIBIT "C" – POLVADERA UNIT STRATIGRAPHIC TYPE LOG

Attached to and made a part of that certain Resource Development Unit Agreement for the Development and Operation of the Polvadera Development Unit Area entered into by Chevron U.S.A. Inc.

DELAWARE BASIN TEXAS (Permian OIL)



BEFORE THE OIL CONSERVATION DIVISION

Santa Fe, New Mexico

Exhibit No. C

Submitted by:

CHEVRON USA INC

Hearing Date: April 13, 2017