

**DISTRICT I**1625 N French Dr Hobbs NM 88240  
Phone (575) 393-6161 Fax: (575) 393-0720**DISTRICT II**811 S First St. Artesia, NM 88210  
Phone (575) 748-1283 Fax: (575) 748-9720**DISTRICT III**1000 Rio Brazos Rd Aztec NM 87410  
Phone (505) 334-6176 Fax: (505) 334-8170**DISTRICT IV**1226 S St. Francis Dr Santa Fe, NM 87505  
Phone (505) 476-3480 Fax: (505) 476-8468State of New Mexico  
Energy Minerals and Natural Resources Department

Form C-102

Revised August 1 2011

Submit one copy to appropriate  
District Office**OIL CONSERVATION DIVISION**1226 South St Francis Dr  
Santa Fe New Mexico 87505**WELL LOCATION AND ACREAGE DEDICATION PLAT**☐ AMENDED REPORT

API Number 30 025 42733	Pool Code WC	Pool Name Wildcat Wolfcamp Pool
Property Code	Property Name WILDHOG BWX STATE COM	Well Number 1H
OGRID No 372031	Operator Name OneEnergy Partners Operating LLC	Elevation 2943

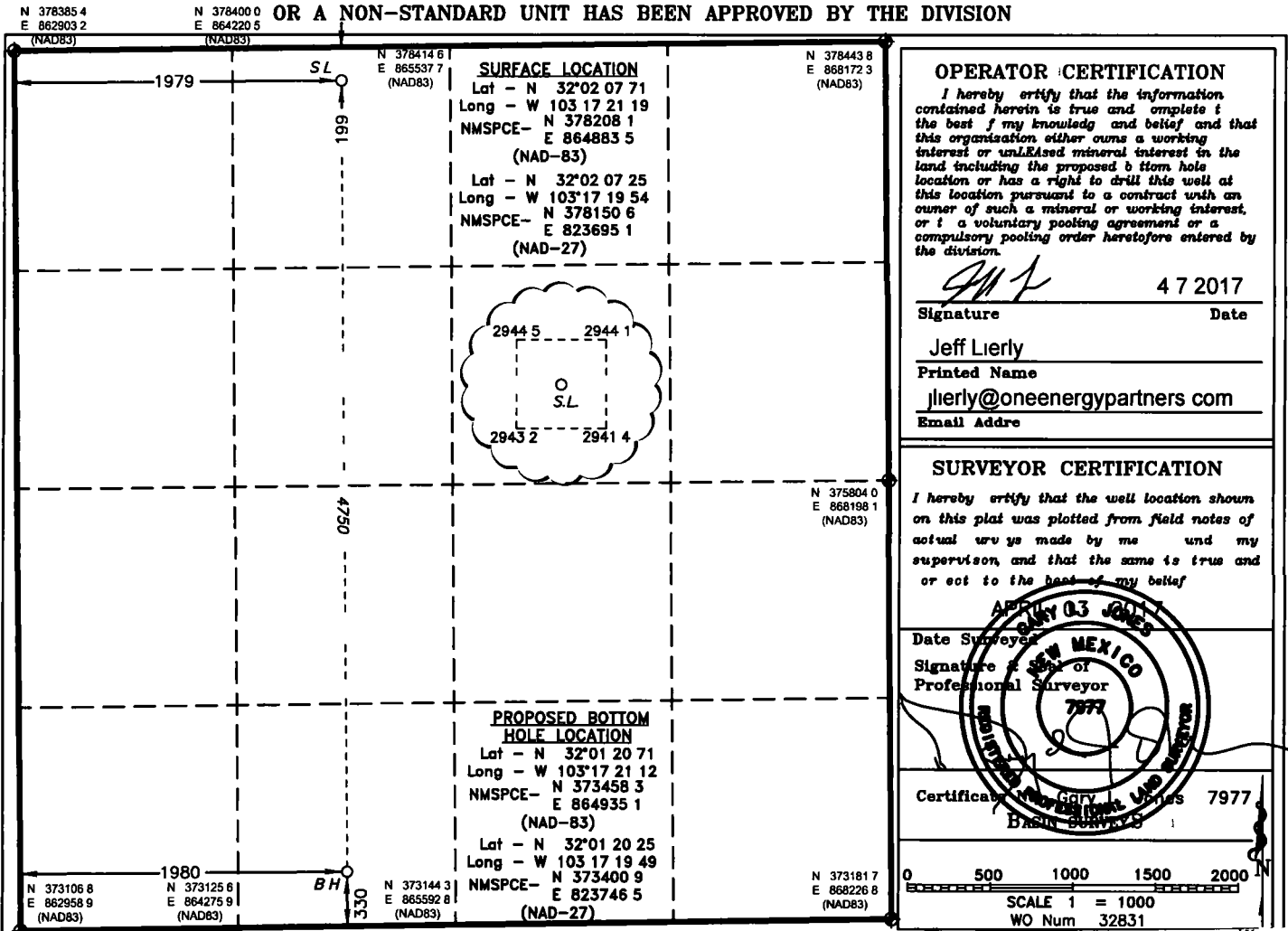
**Surface Location**

UL or lot No	Section	Township	Range	Lot Idn	Feet from the	North/South line	Feet from the	East/West line	County
C	20	26 S	36 E		199	NORTH	1979	WEST	LEA

**Bottom Hole Location If Different From Surface**

UL or lot No	Section	Township	Range	Lot Idn	Feet from the	North/South line	Feet from the	East/West line	County
N	20	26 S	36 E		330	SOUTH	1980	WEST	LEA

Dedicated Acres	Joint or Infill	Consolidation Code	Order No
160.00			

NO ALLOWABLE WILL BE ASSIGNED TO THIS COMPLETION UNTIL ALL INTERESTS HAVE BEEN CONSOLIDATED  
OR A NON-STANDARD UNIT HAS BEEN APPROVED BY THE DIVISION**OPERATOR CERTIFICATION**

I hereby certify that the information contained herein is true and complete to the best of my knowledge and belief and that this organization either owns a working interest or unleased mineral interest in the land including the proposed bottom hole location or has a right to drill this well at this location pursuant to a contract with an owner of such a mineral or working interest, or a voluntary pooling agreement or a compulsory pooling order heretofore entered by the division.

Signature: *Jeff Lierly* Date: 4 7 2017  
 Printed Name: Jeff Lierly  
 Email Address: jlierly@oneenergypartners.com

**SURVEYOR CERTIFICATION**

I hereby certify that the well location shown on this plat was plotted from field notes of actual surveys made by me and my supervision, and that the same is true and correct to the best of my belief.

Date Surveyed: *APR 03 2011*  
 Signature of Professional Surveyor: *[Signature]*  
 Certificate Number: 7977  
 State of New Mexico

Scale: 1" = 1000'  
 WO Num: 32831

BEFORE THE OIL CONSERVATION  
 COMMISSION

Santa Fe New Mexico

Exhibit No 2

Submitted by ONEENERGY PARTNERS OP