

DISTRICT I
1825 N French Dr H bbs NM 88240
Phone (576) 393-6161 Fax: (576) 393-0720
DISTRICT II
811 S First St Artesia, NM 88210
Phone (576) 748 1283 Fax: (576) 748-0720

DISTRICT III
1000 Rio Brazos Rd. Artec NM 87410
Phone (506) 334-6176 Fax: (506) 334-6170

DISTRICT IV
1226 S St. Francis Dr Santa Fe NM 87505
Phone (505) 476-3460 Fax: (505) 476-3465

State of New Mexico
Energy Minerals and Natural Resources Department

Form C-102
Revised August 1 2011

Submit one copy to appropriate
District Office

OIL CONSERVATION DIVISION
1226 South St Francis Dr
Santa Fe New Mexico 87505

WELL LOCATION AND ACREAGE DEDICATION PLAT

☐ AMENDED REPORT

API Number 30 025-42744	Pool Code WC	Pool Name Wildcat Wolfcamp Pool
Property Code	Property Name PRIZEHOG BWZ STATE COM	Well Number 1H
OGRID No 372031	Operator Name OneEnergy Partners Operating LLC	Elevation 2958

Surface Location

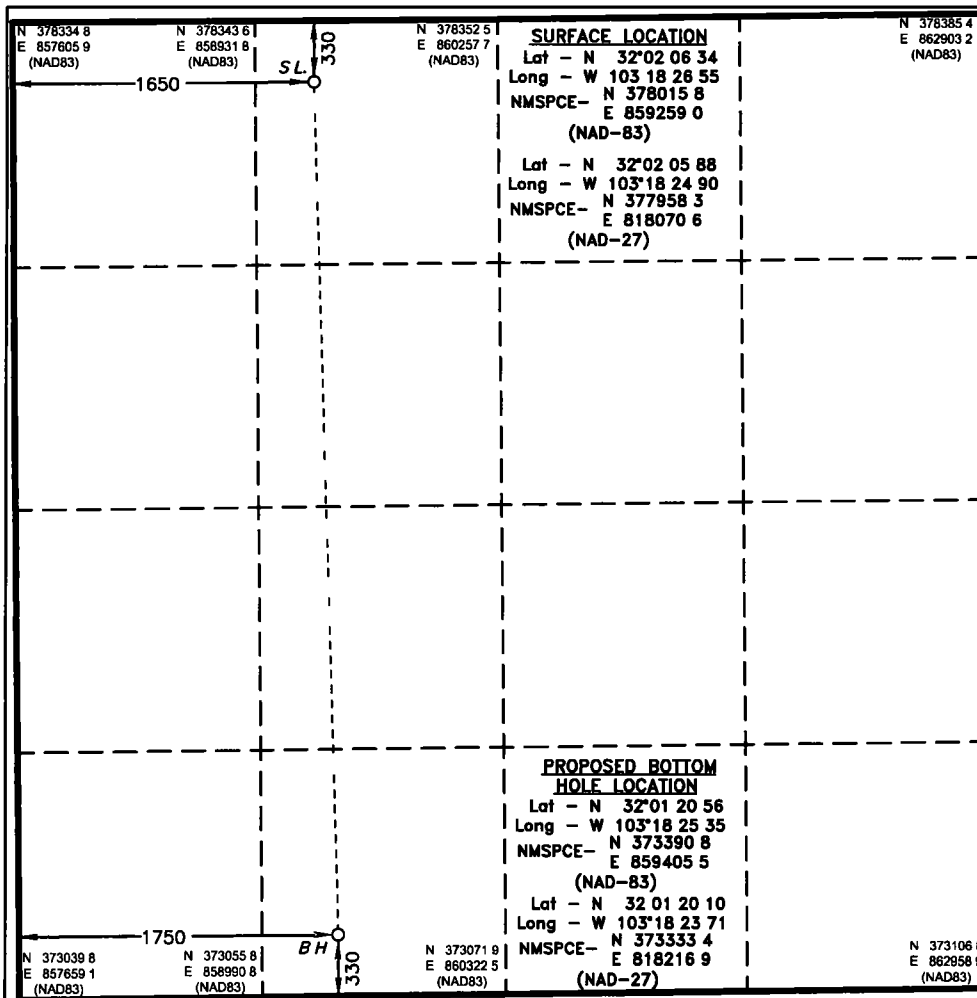
UL or lot No	Section	Township	Range	Lot Idn	Feet from the	North/South line	Feet from the	East/West line	County
C	19	26 S	36 E		330	NORTH	1650	WEST	LEA

Bottom Hole Location If Different From Surface

UL or lot No	Section	Township	Range	Lot Idn	Feet from the	North/South line	Feet from the	East/West line	County
N	19	26 S	36 E		330	SOUTH	1750	WEST	LEA

Dedicated Acres 160.00	Joint or Infill	Consolidation Code	Order No
---------------------------	-----------------	--------------------	----------

NO ALLOWABLE WILL BE ASSIGNED TO THIS COMPLETION UNTIL ALL INTERESTS HAVE BEEN CONSOLIDATED
OR A NON-STANDARD UNIT HAS BEEN APPROVED BY THE DIVISION



OPERATOR CERTIFICATION

I hereby certify that the information contained herein is true and complete to the best of my knowledge and belief and that this organization either owns a working interest or undivided mineral interest in the land including the proposed bottom hole location or has a right to drill this well at this location pursuant to a contract with an owner of such a mineral or working interest, or to a voluntary pooling agreement or a compulsory pooling order heretofore entered by the division.

Signature _____ Date _____
Jeff Lierly
Printed Name
jlierly@oneenergypartners.com
Email Address

SURVEYOR CERTIFICATION

I hereby certify that the well location shown on this plat was plotted from field notes of actual work made by me and my up to date that the same is true and correct to the best of my belief.

Date Surveyed 7/7/11
Signature & Seal of Professional Surveyor

Certificate No Gary L Jones 7977
BASIN SURVEYS

0 500 1000 1500 2000
SCALE 1" = 1000'
WO Num 32814

BEFORE THE OIL CONSERVATION
COMMISSION
Santa Fe New Mexico
Exhibit No 3
Submitted by ONEENERGY PARTNERS OP