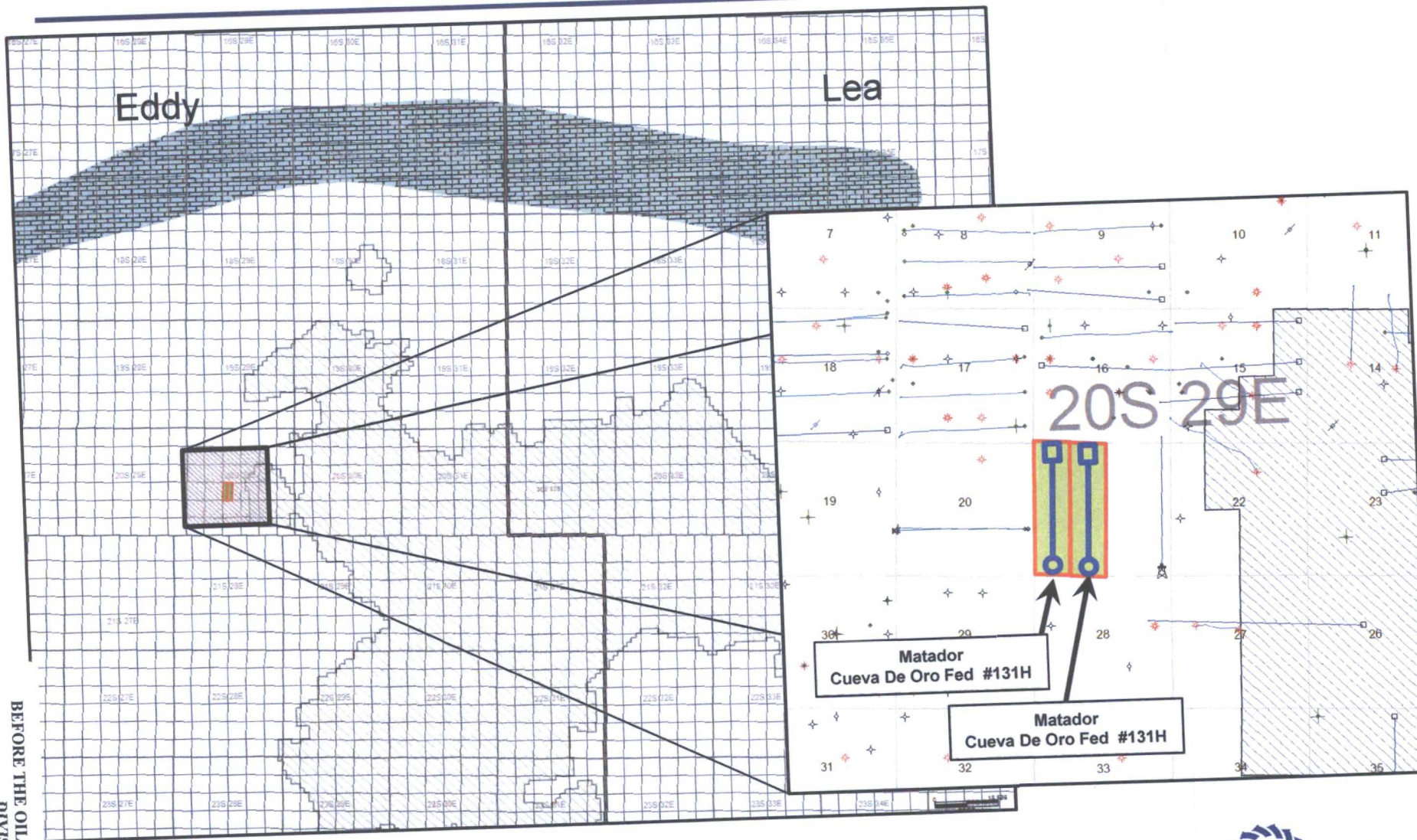


Getty: Bone Spring (Pool Code: 27470) Locator Map

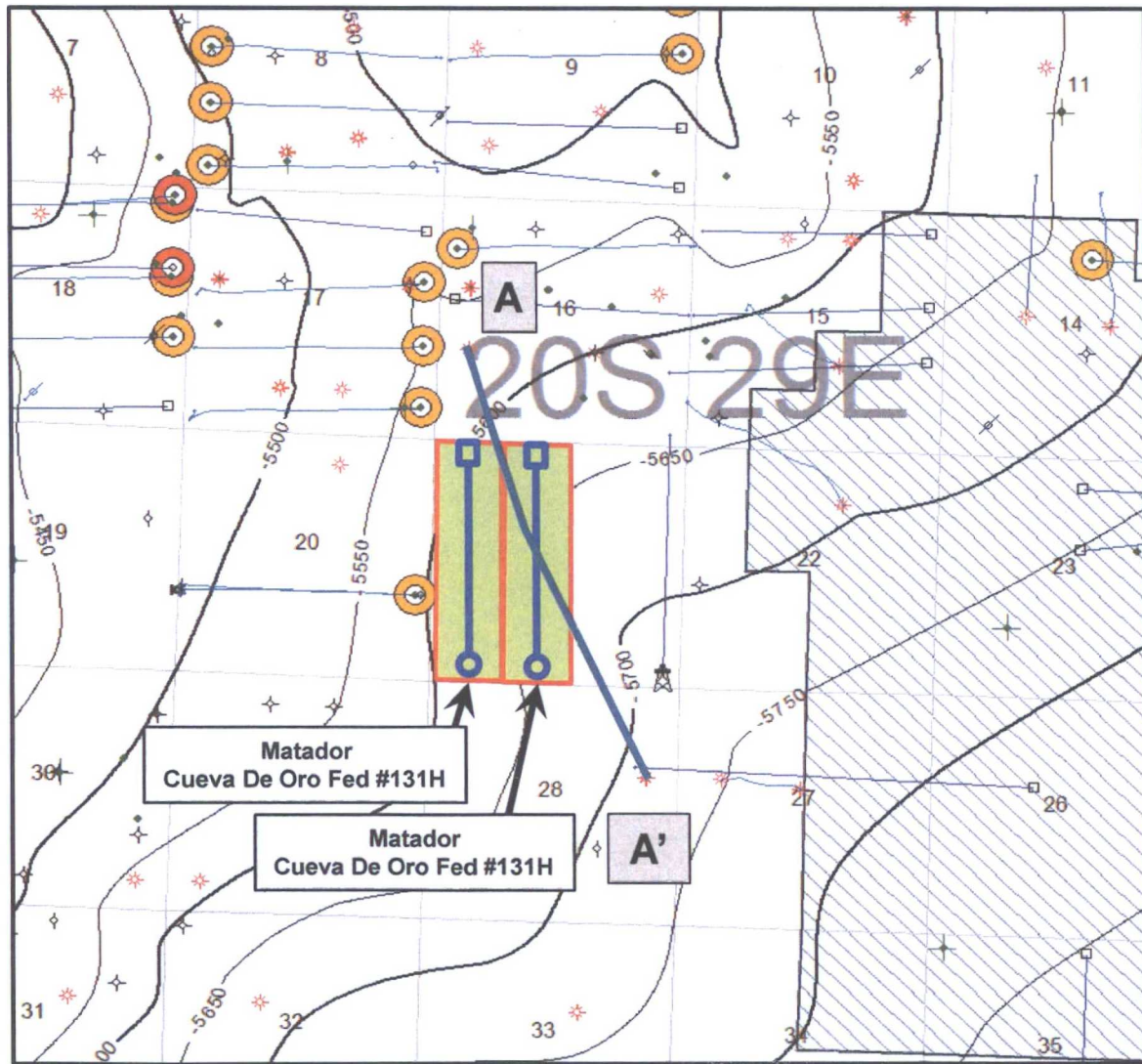


BEFORE THE OIL CONSERVATION
DIVISION
Santa Fe, New Mexico
Exhibit No. 10
Submitted by: MATADOR PROD. CO.
Hearing Date: July 20, 2017





Cueva De Oro Fed #131H & 132H



Getty: Bone Spring (Pool Code: 27470) Structure Map



Map Legend

- BHL  Matador – Horizontal Location
- SHL  Project Area
-  2nd Bone Spring HZ Producer
-  3rd Bone Spring HZ Producer

C.I. = 50'

Cueva De Oro Fed #131H & 132H



BEFORE THE OIL CONSERVATION
DIVISION

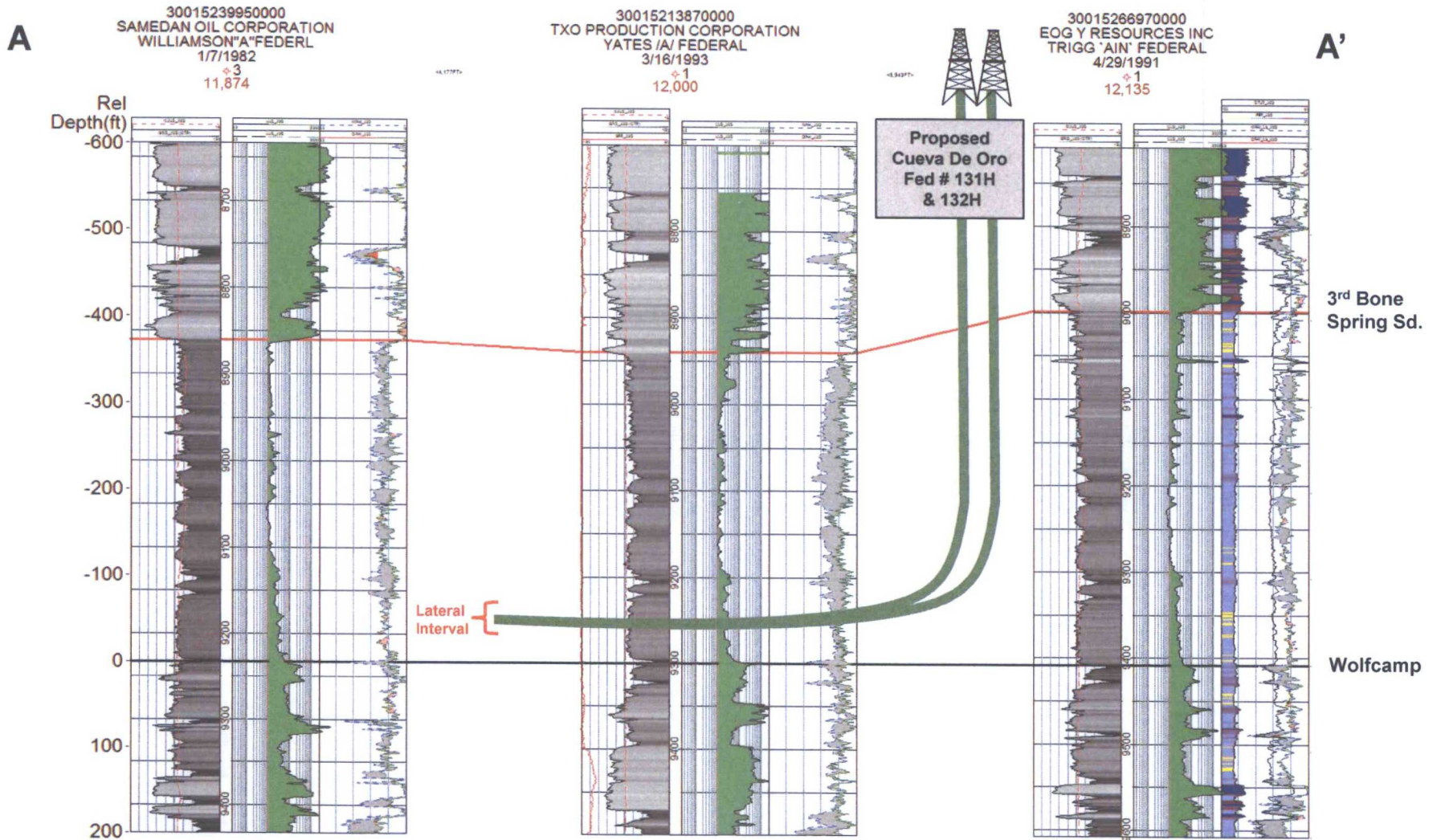
Santa Fe, New Mexico

Exhibit No. 11

Submitted by: MATADOR PROD. CO.

Hearing Date: July 20, 2017

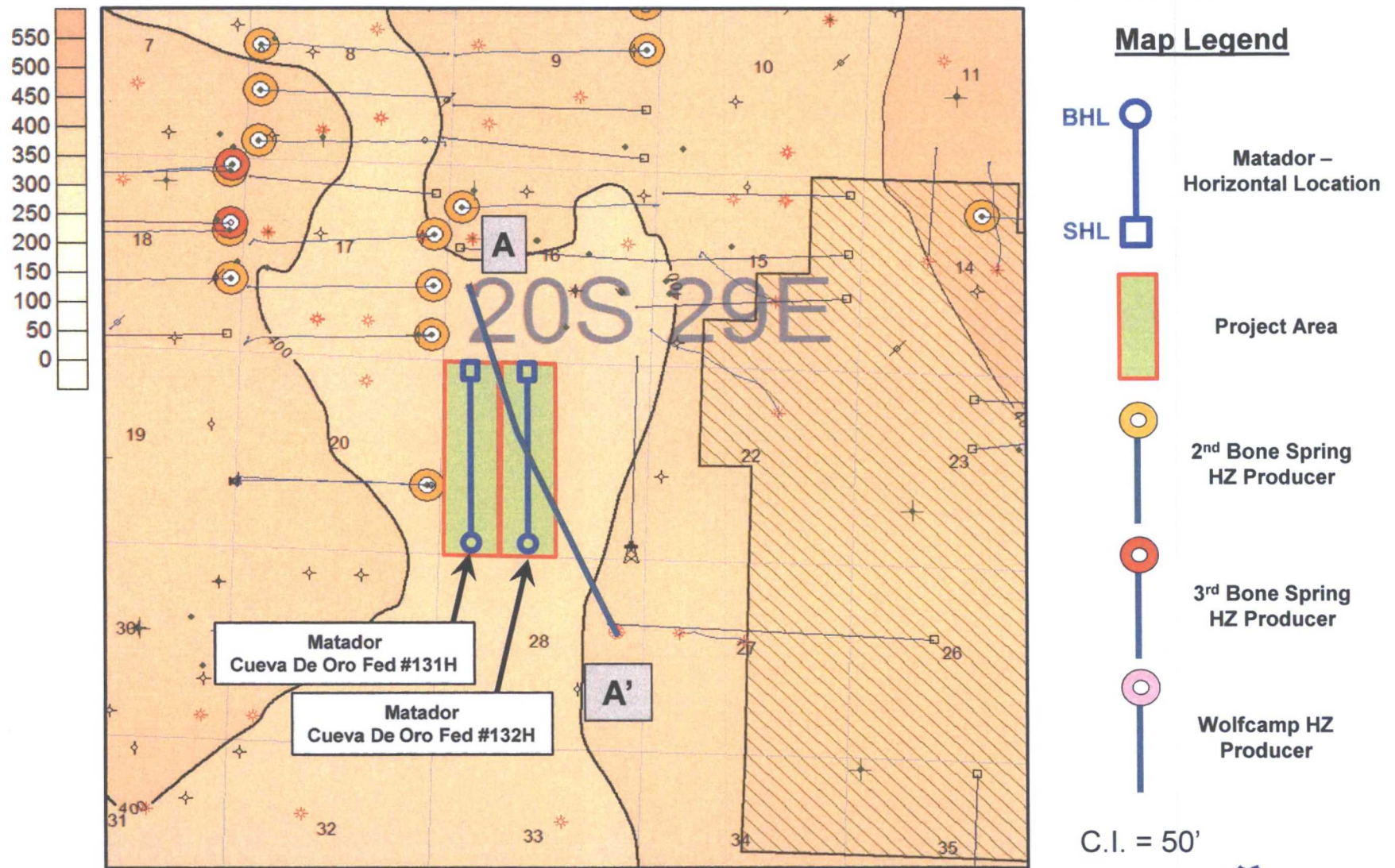
Getty: Bone Spring (Pool Code: 27470) Stratigraphic Cross Section A - A'



Cueva De Oro Fed #131H & 132H



Getty: Bone Spring (Pool Code: 27470) Gross Thickness Isopach Map



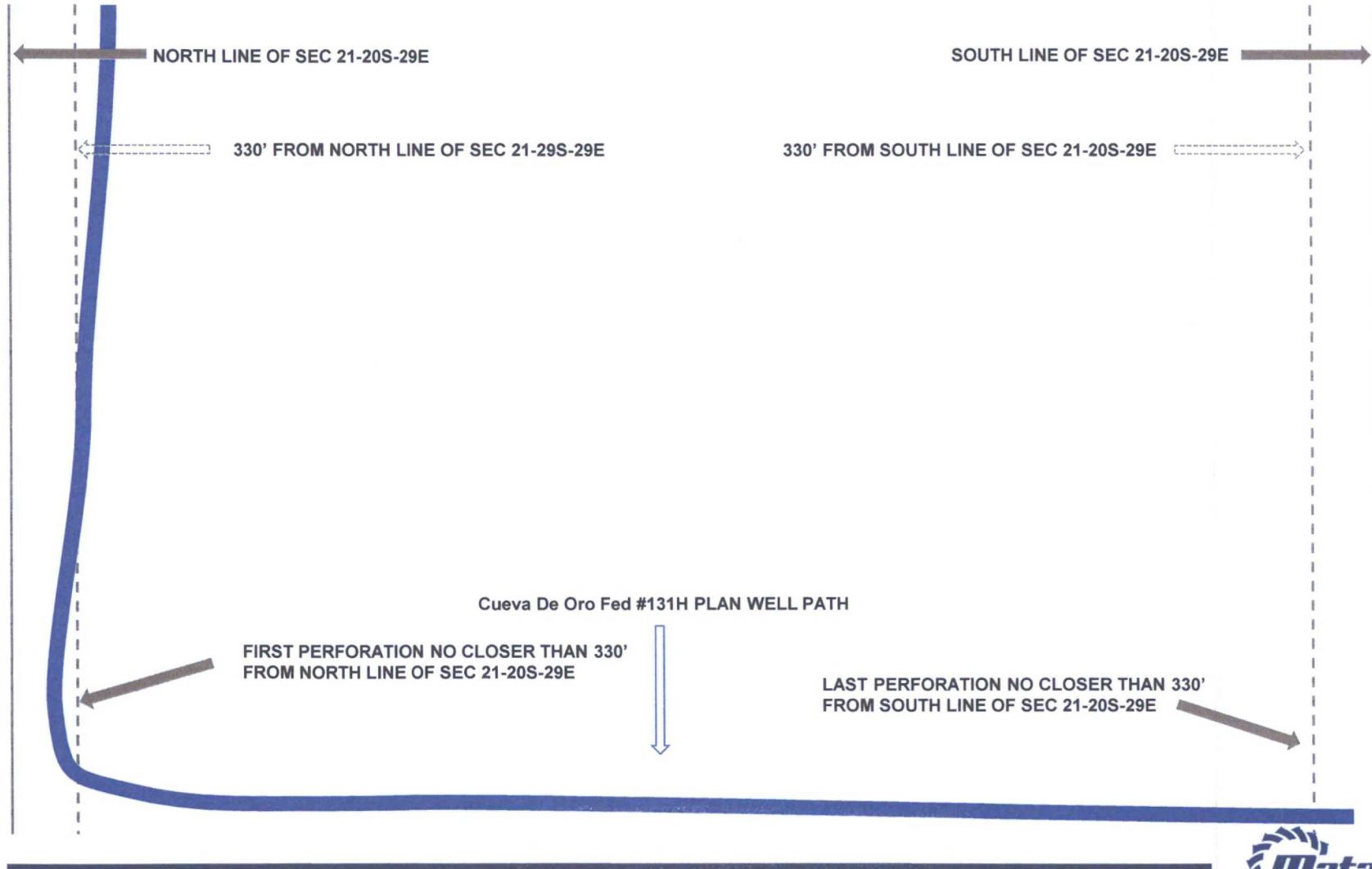
Cueva De Oro Fed #131H & 132H



Getty: Bone Spring (Pool Code: 27470) Cueva De Oro Fed #131H Completion

Cueva De Oro Fed #131H
SURFACE HOLE 884' FNL & 300' FWL OF SEC 21-20S-29E
BOTTOM HOLE 240' FSL & 330' FWL OF SEC 21-20S-29E

DIAGRAM NOT DRAWN TO SCALE



Cueva De Oro Fed #131H & 132H

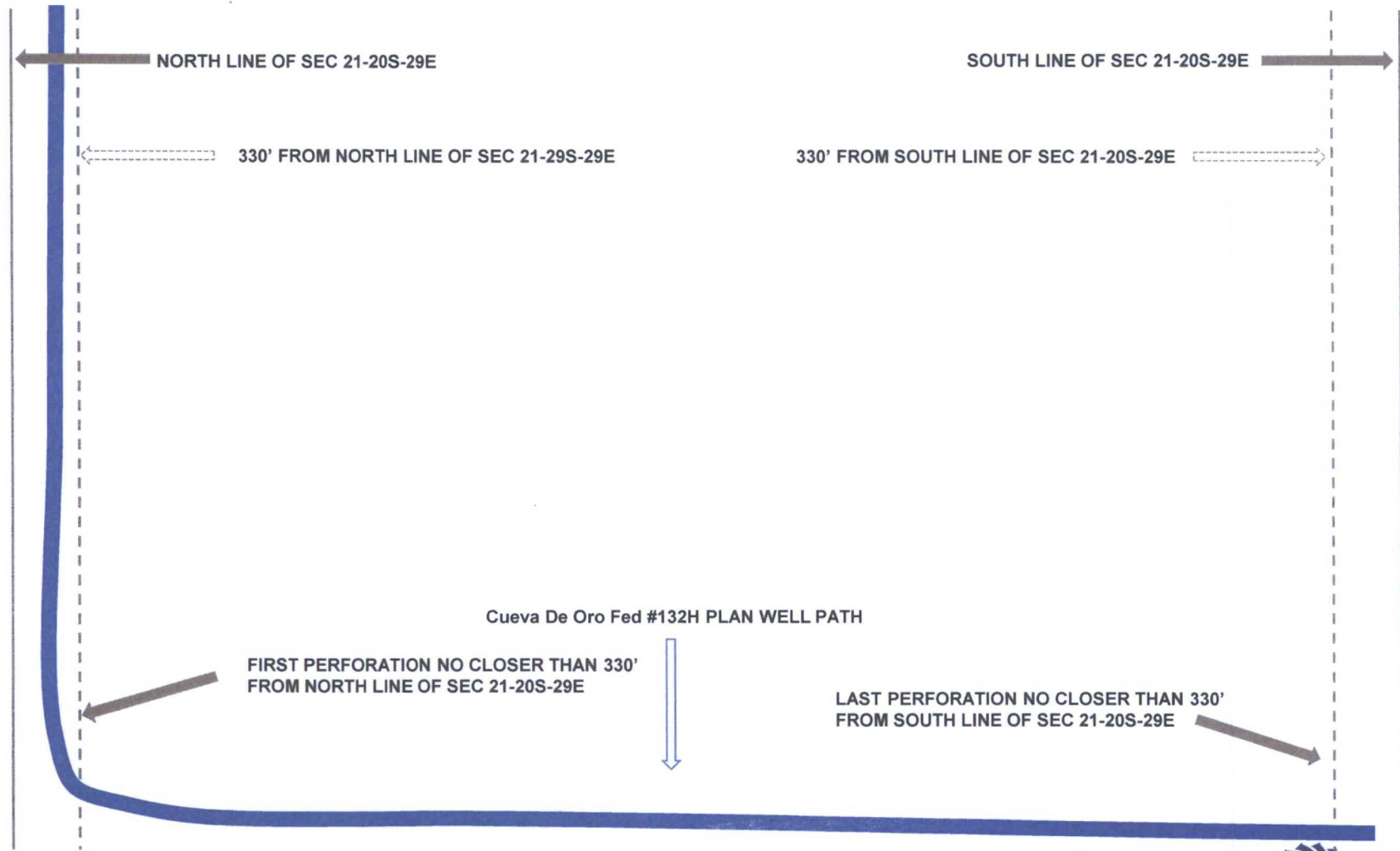


BEFORE THE OIL CONSERVATION
DIVISION
Santa Fe, New Mexico
Submitted by: MATADOR PROD. CO.
Exhibit No. 14
Hearing Date: July 20, 2017

Getty: Bone Spring (Pool Code: 27470) Cueva De Oro Fed #132H Completion

Cueva De Oro Fed #132H
SURFACE HOLE 246' FNL & 1,889' FWL OF SEC 21-20S-29E
BOTTOM HOLE 240' FSL & 1,870' FWL OF SEC 21-20S-29E

DIAGRAM NOT DRAWN TO SCALE



Cueva De Oro Fed #132H & 132H



BEFORE THE OIL CONSERVATION
DIVISION
Santa Fe, New Mexico
Exhibit No. 15
Submitted by: MATADOR PROD. CO.
Hearing Date: July 20, 2017