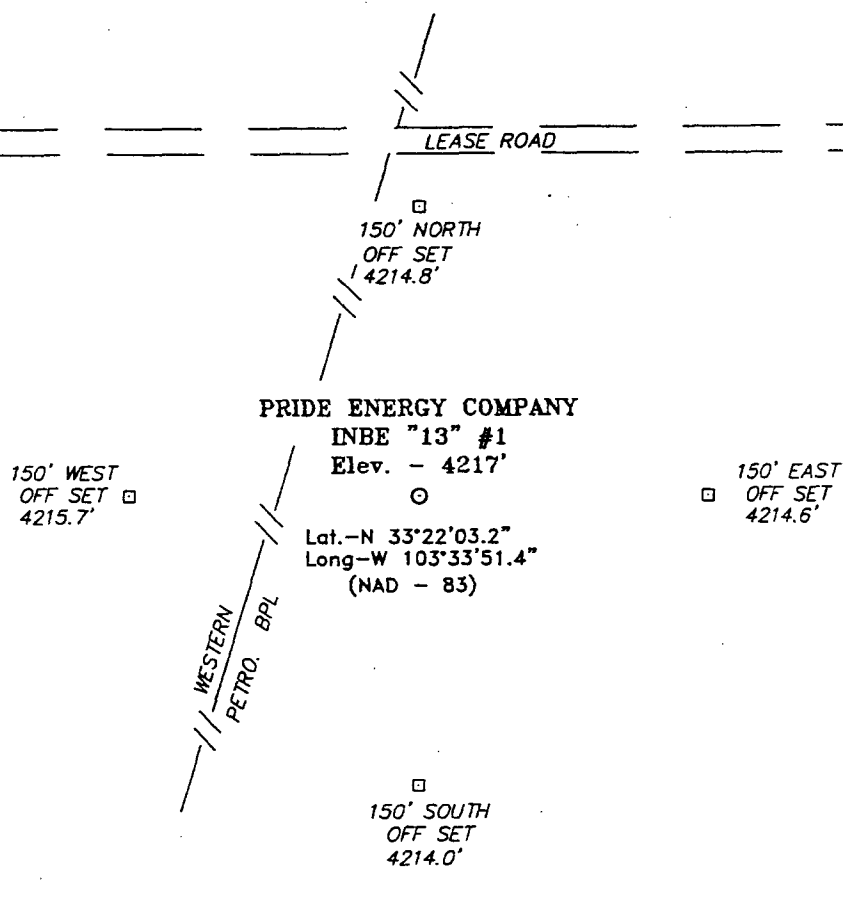
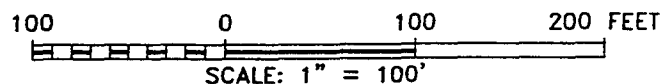


**SECTION 13, TOWNSHIP 11 SOUTH, RANGE 33 EAST, N.M.P.M.,
LEA COUNTY, NEW MEXICO.**



Directions to Location:

FROM TATUM PROCEED WEST ON US. HWY 380 TO THE INTERSECTION OF US. HWY 380 AND CO. RD. 155. GO NORTH FOR 2.5 MILES ON CO. RD. 155 TO A LEASE ROAD; THENCE WEST ON LEASE 0.32 MILE TO A POINT 160 FEET NORTH OF LOCATION FLAG.



PRIDE ENERGY COMPANY

REF: INBE "13" #1 / Well Pad Topo

THE INBE "13" #1 LOCATED 1980' FROM
THE NORTH LINE AND 1680' FROM THE EAST LINE OF
SECTION 13, TOWNSHIP 11 SOUTH, RANGE 33 EAST,
N.M.P.M., LEA COUNTY, NEW MEXICO.

BASIN SURVEYS P.O. BOX 1786 - HOBBS, NEW MEXICO

W.O. Number: 6519

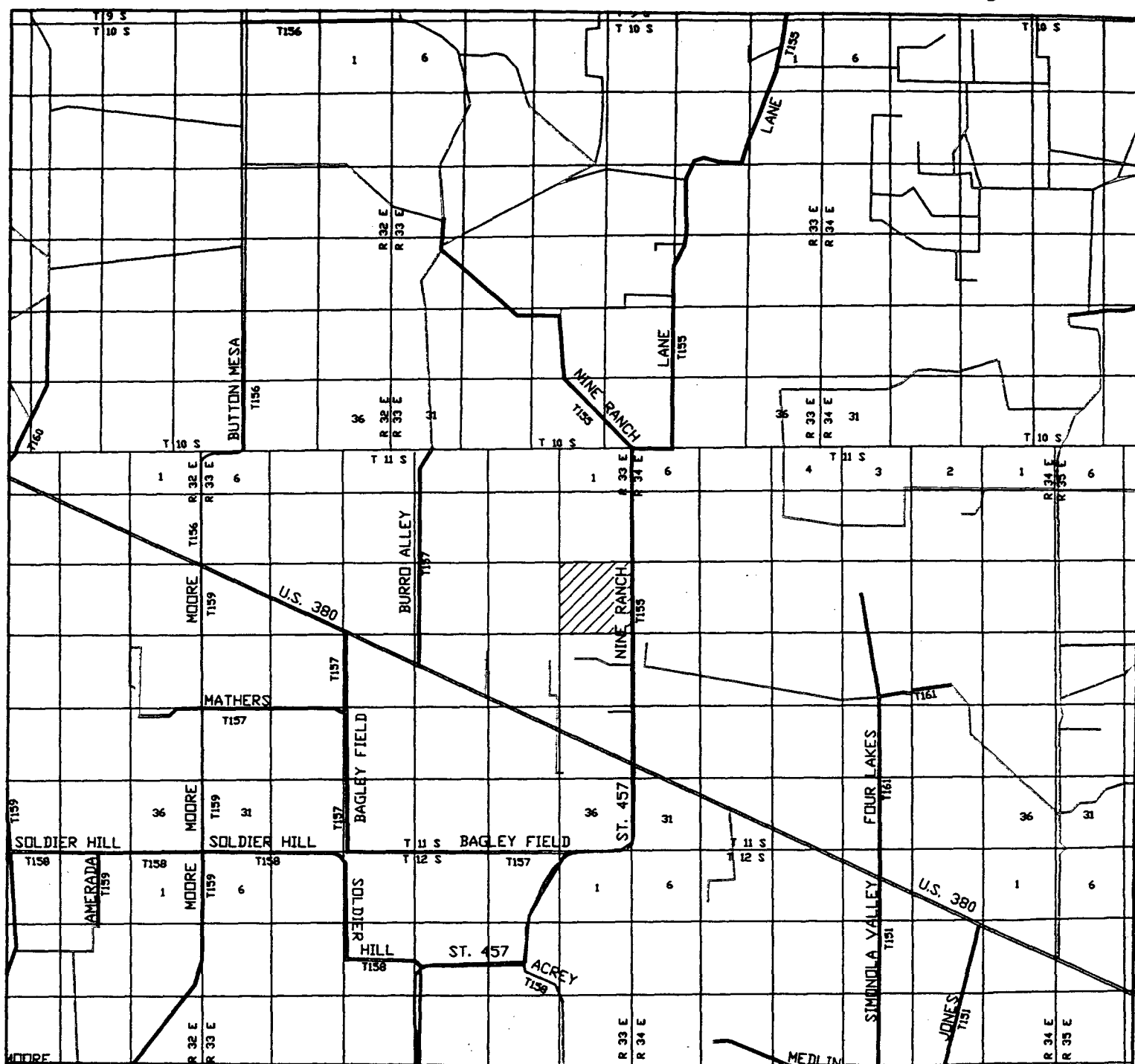
Drawn By: J. SMALL

Date: 04-27-2006

Disk: JMS 6519W4

Survey Date: 04-25-2006

Sheet 1 of 1 Sheets



INBE "13" #1
 1980' FNL AND 1680' FEL
 Section 13, Township 11 South, Range 33 East,
 N.M.P.M., Lea County, New Mexico.

basin
surveys
 focused on excellence
 in the oilfield

P.O. Box 1786
 1120 N. West County Rd.
 Hobbs, New Mexico 88241
 (505) 393-7316 - Office
 (505) 392-3074 - Fax
 basin-surveys.com

W.O. Number: JMS 6519T

Survey Date: 04-25-2006

Scale: 1" = 2000'

Date: 04-27-2006

PRIDE
ENERGY
COMPANY

DISTRICT I
1625 N. French Dr., Hobbs, NM 88240

DISTRICT II
811 South First, Artesia, NM 88210

DISTRICT III
1000 Rio Brazos Rd., Artec, NM 87410

DISTRICT IV
2040 South Pacheco, Santa Fe, NM 87505

State of New Mexico
Energy, Minerals and Natural Resources Department

Form C-102
Revised March 17, 1999

Submit to Appropriate District Office
State Lease - 4 Copies
Fee Lease - 3 Copies

OIL CONSERVATION DIVISION

2040 South Pacheco
Santa Fe, New Mexico 87504-2088

☐ AMENDED REPORT

WELL LOCATION AND ACREAGE DEDICATION PLAT

API Number	Pool Code	Pool Name
Property Code	Property Name INBE "13"	Well Number 1
OGRID No.	Operator Name PRIDE ENERGY COMPANY	Elevation 4217'

Surface Location

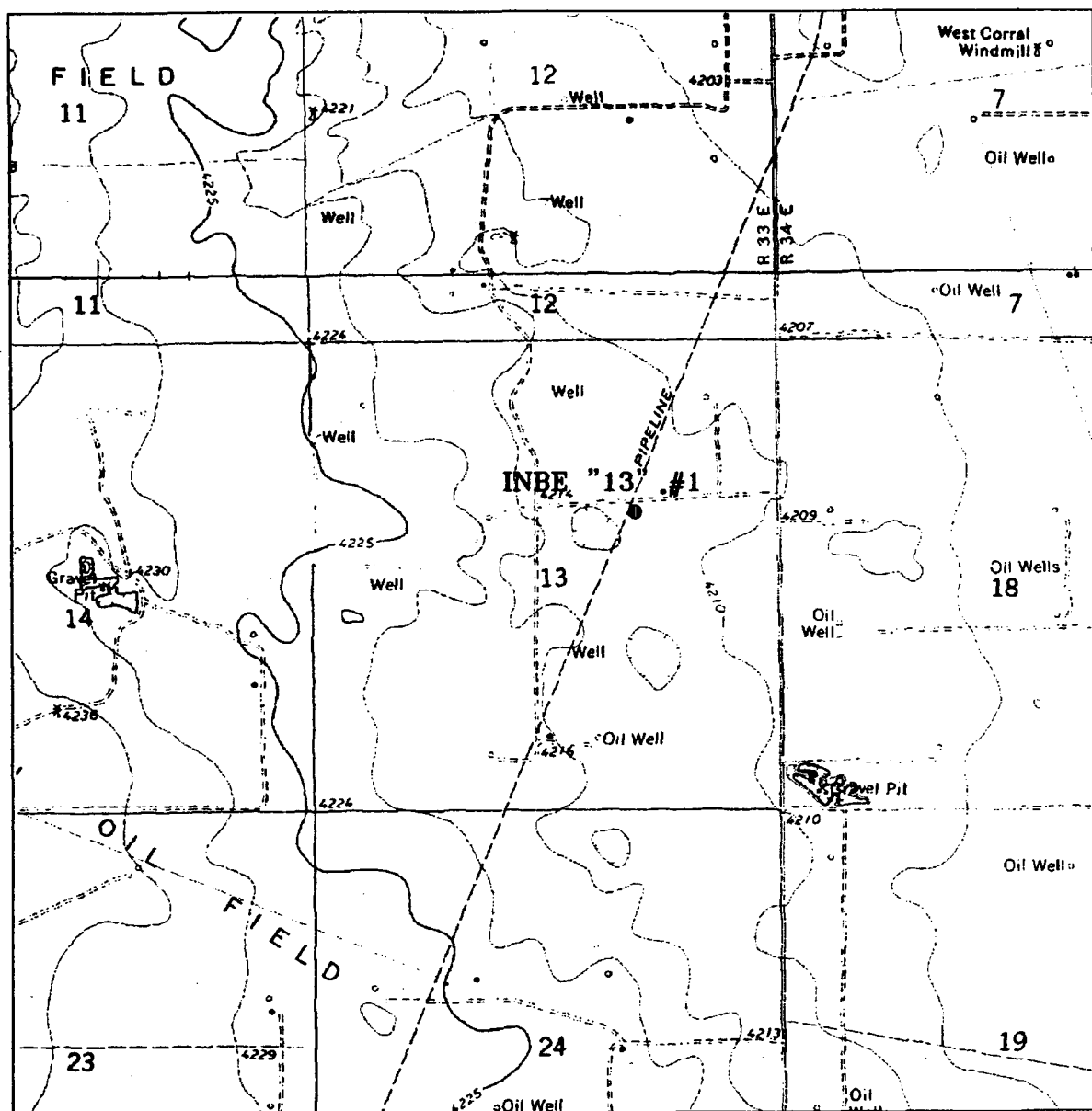
UL or lot No.	Section	Township	Range	Lot Idn	Feet from the	North/South line	Feet from the	East/West line	County
G	13	11 S	33 E		1980	NORTH	1680	EAST	LEA

Bottom Hole Location If Different From Surface

UL or lot No.	Section	Township	Range	Lot Idn	Feet from the	North/South line	Feet from the	East/West line	County
Dedicated Acres	Joint or Infill	Consolidation Code	Order No.						

NO ALLOWABLE WILL BE ASSIGNED TO THIS COMPLETION UNTIL ALL INTERESTS HAVE BEEN CONSOLIDATED
OR A NON-STANDARD UNIT HAS BEEN APPROVED BY THE DIVISION

	OPERATOR CERTIFICATION I hereby certify the the information contained herein is true and complete to the best of my knowledge and belief.	
	Signature _____	
	Printed Name _____	
	Title _____	
	Date _____	
	SURVEYOR CERTIFICATION I hereby certify that the well location shown on this plat was plotted from field notes of actual surveys made by me or under my supervision and that the same is true and correct to the best of my belief.	
	APRIL 27, 2006 Date Surveyed	
	Signature & Seal of Professional Surveyor	
	W.O. No. 6519	
	Certificate No. Gary L. Jones 7977	
BASIN SURVEYS		



INBE "13" #1
 1980' FNL AND 1680' FEL
 Section 13, Township 11 South, Range 33 East,
 N.M.P.M., Lea County, New Mexico.

basin
surveys
 focused on excellence
 in the oilfield

P.O. Box 1786
 1120 N. West County Rd.
 Hobbs, New Mexico 88241
 (505) 393-7316 - Office
 (505) 392-3074 - Fax
 basin-surveys.com

W.O. Number: JMS 6519T

Survey Date: 04-25-2006

Scale: 1" = 2000'

Date: 04-27-2006

PRIDE
ENERGY
COMPANY